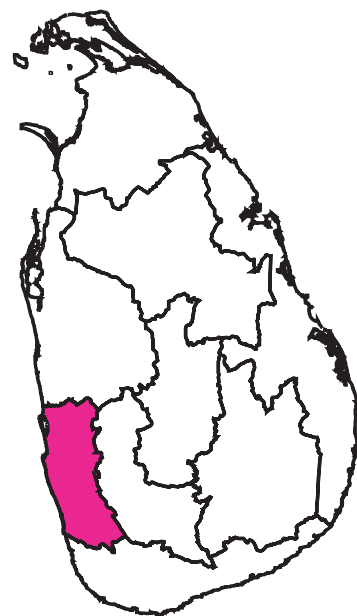
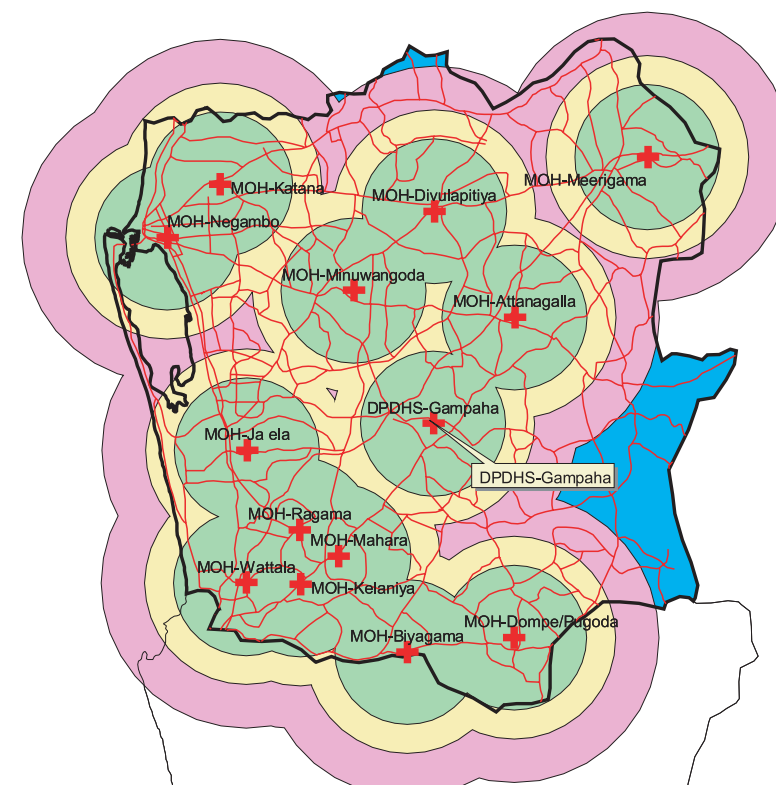

8 SERVICE CATCHMENT AREA OF DDHS(MOH) OFFICE

SERVICE CATCHMENT AREA BY DDHS(MOH) OFFICE IN WESTERN PROVINCE

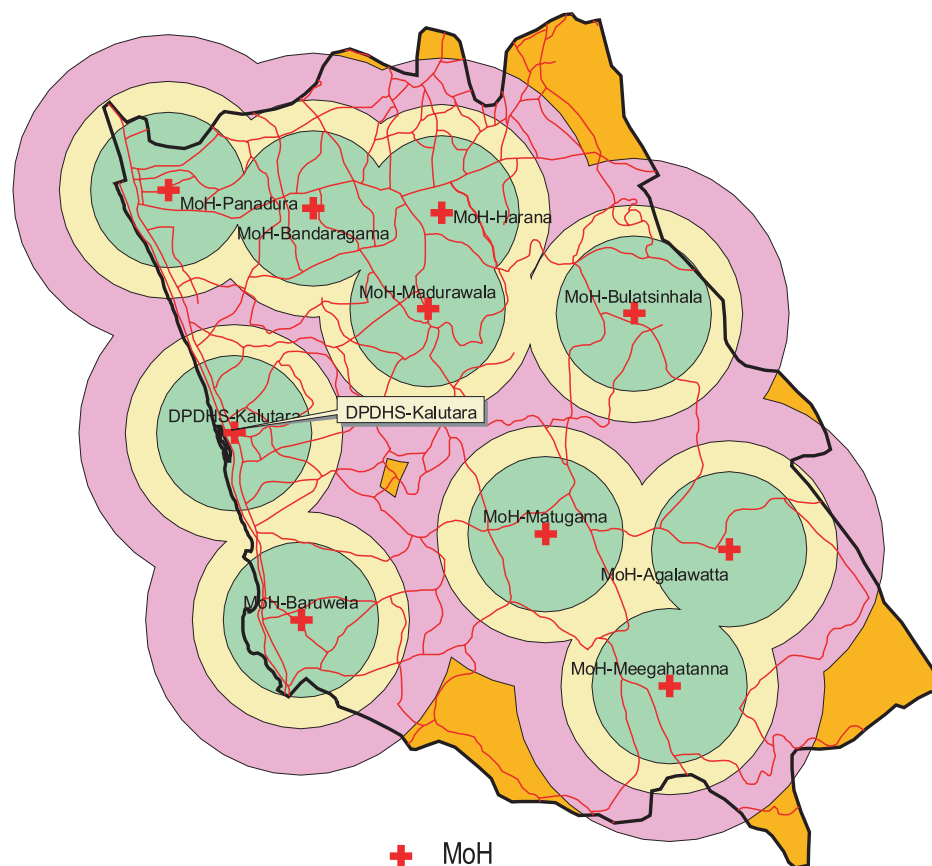
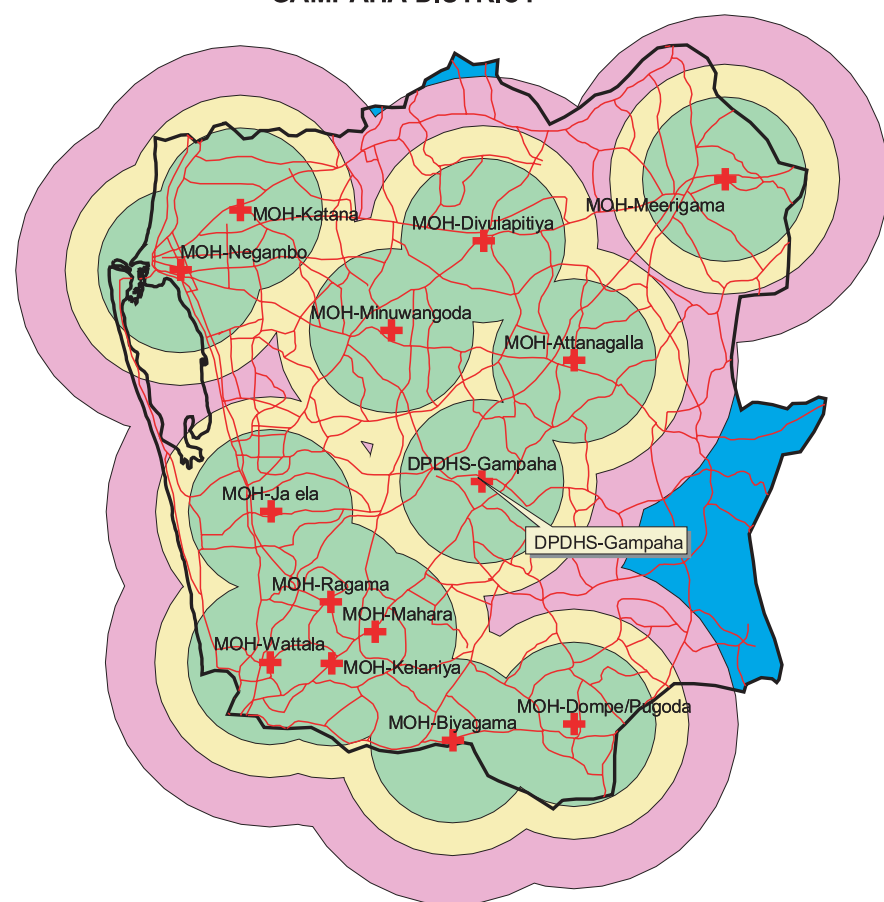


WESTERN PROVINCE MOH OFFICE

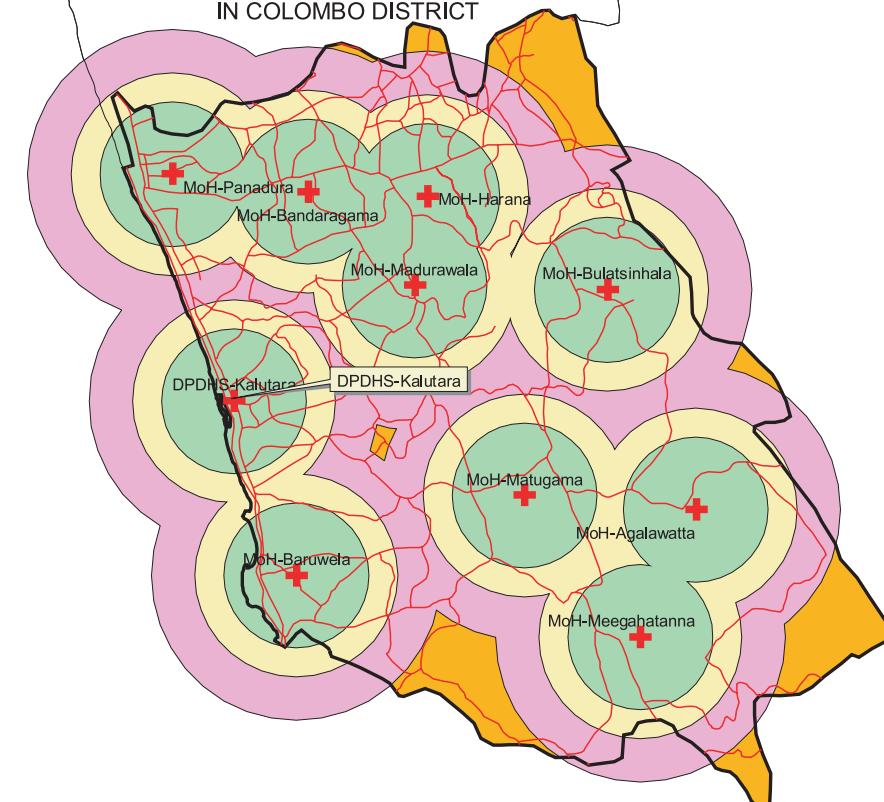


GAMPAHA DISTRICT

KALUTARA DISTRICT

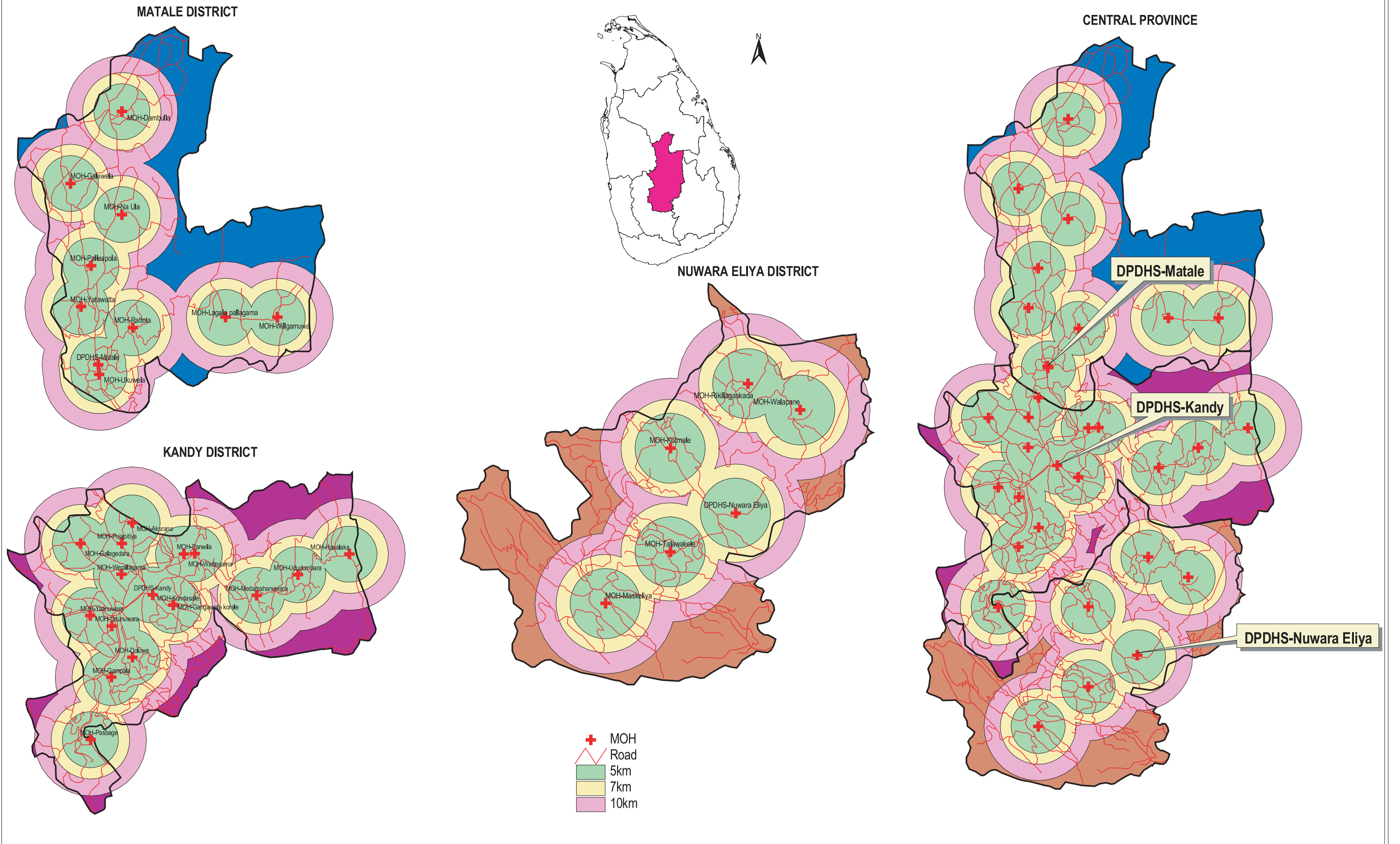


INCOMPLET HOSPITAL LEVEL
IN COLOMBO DISTRICT

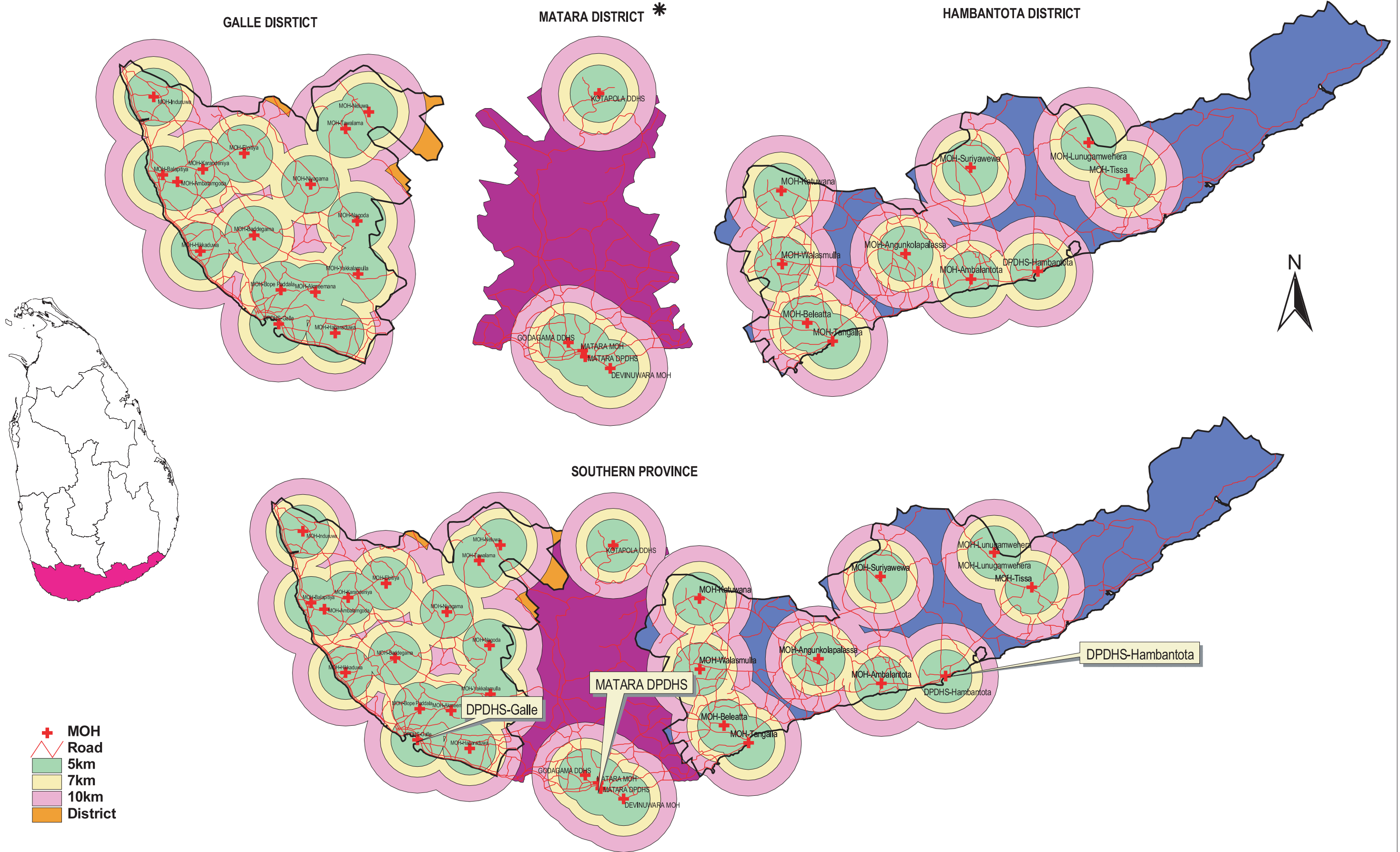


- + MoH
- Road
- 5km
- 7km
- 10km

SERVICE CATCHMENT AREA BY DDHS(MOH) OFFICE IN CENTRAL PROVINCE



SERVICE CATCHMENT AREA BY DDHS(MOH) OFFICE IN SOUTHERN PROVINCE



* INCOMPLETE DDHS LOCATION

Source: Survey of Health Facilities Location 2003