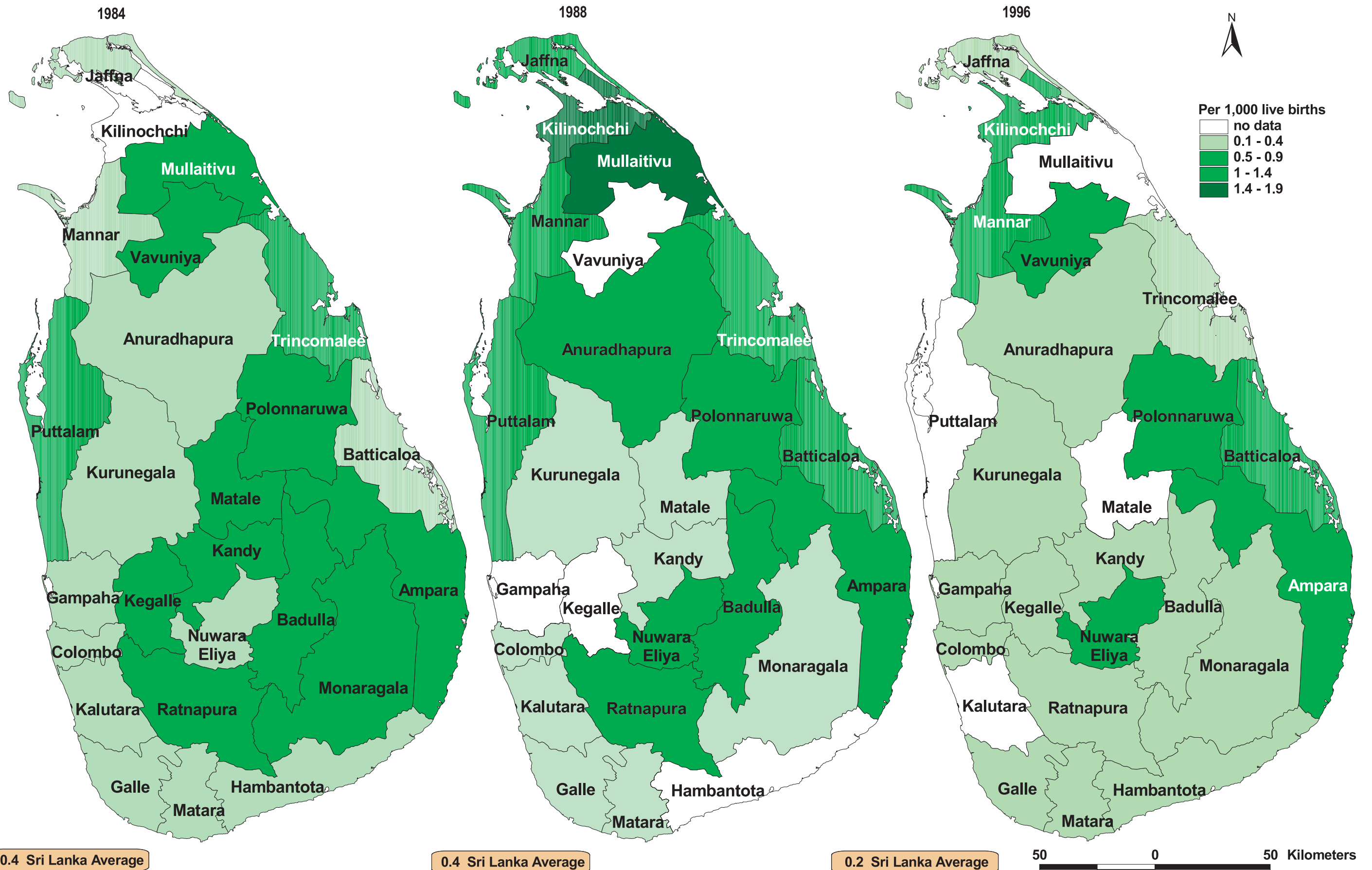
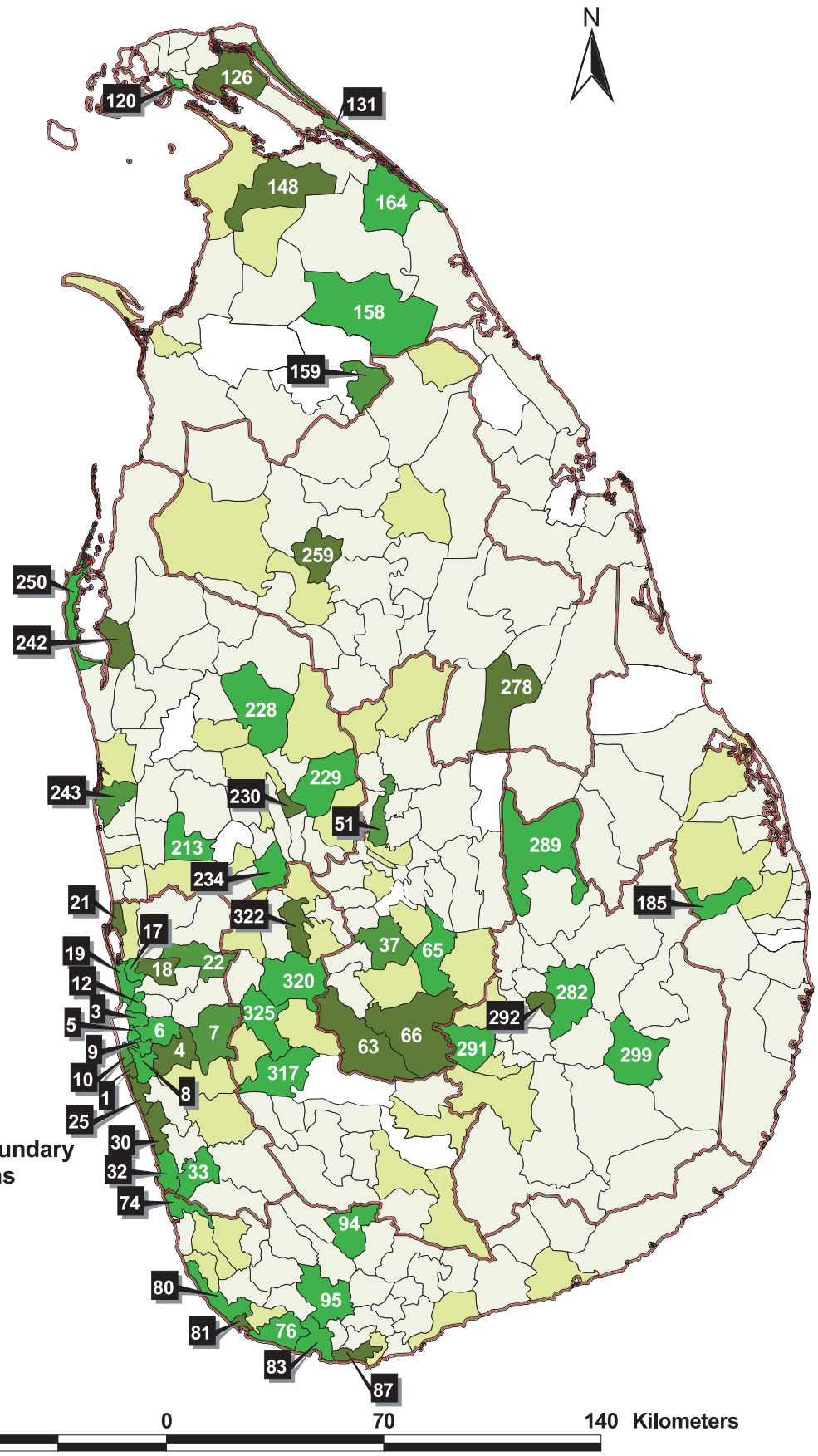


MATERNAL MORTALITY RATE BY DISTRICTS, 1984, 1988 & 1996

[Same Scale]



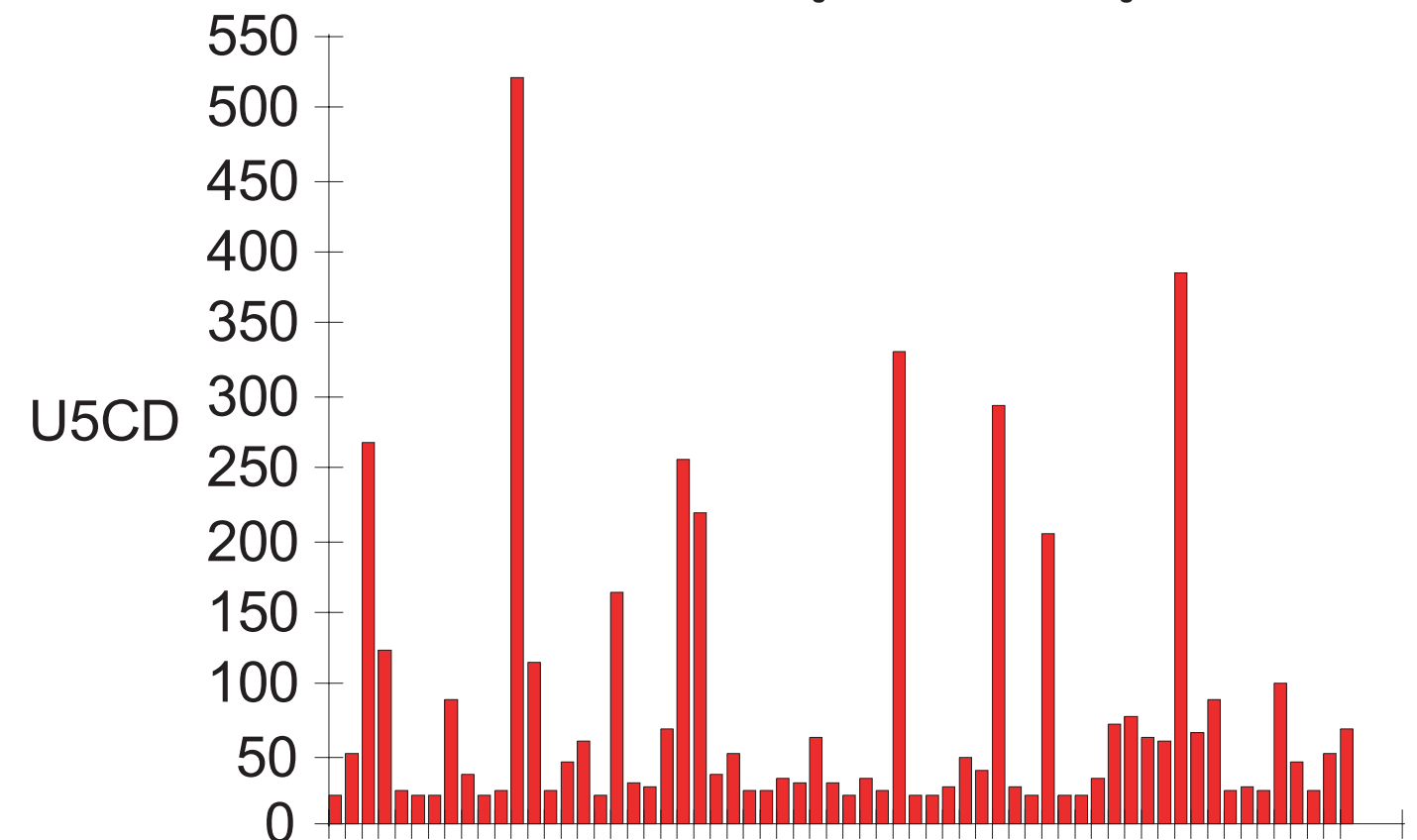
UNDER FIVE CHILD MORTALITY BY DIVISIONAL SECRETARY AREAS, 1996



DS AREAS WITH UFMR HIGHER THAN NATIONAL AVERAGE

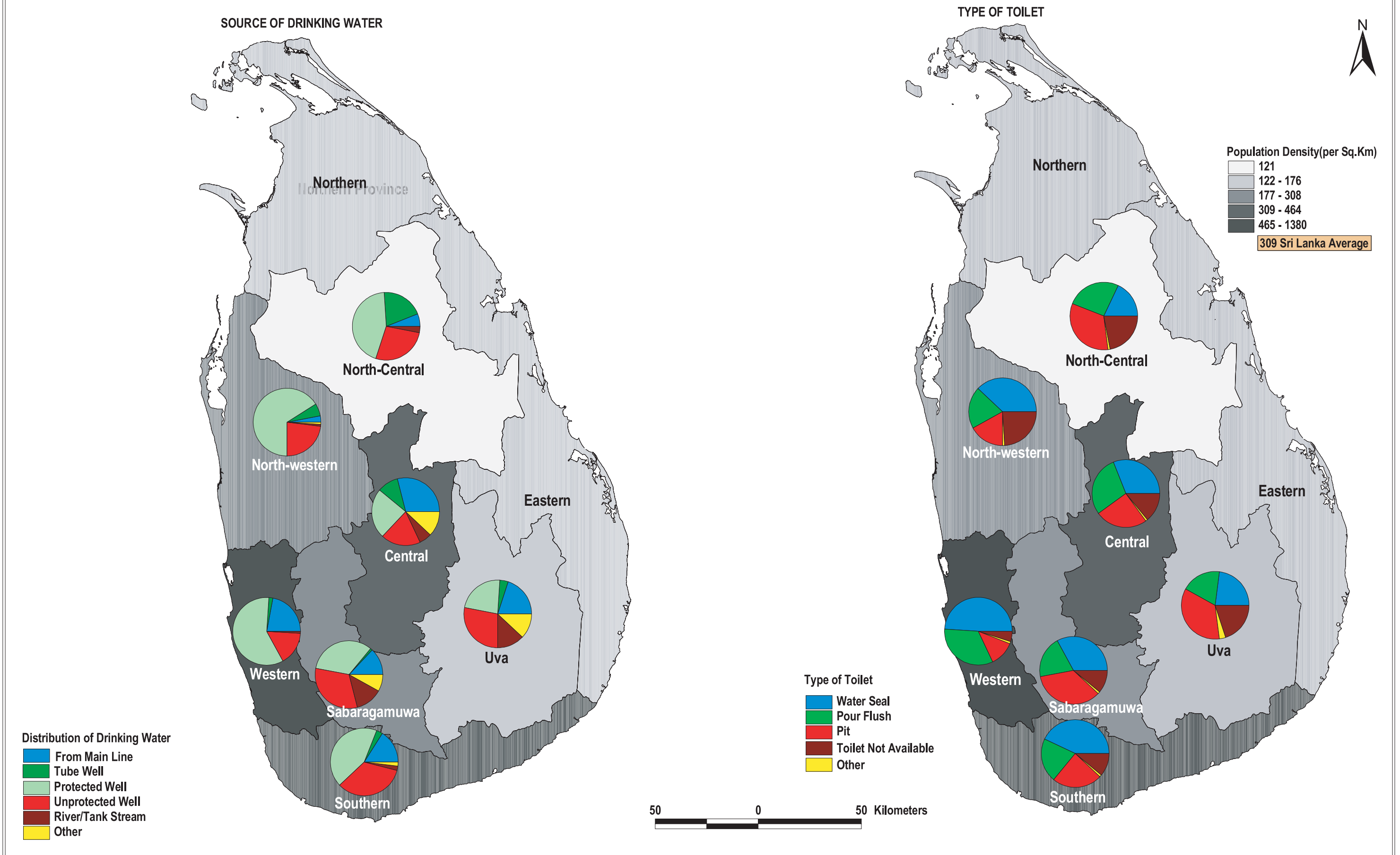
ID	NAME	ID	NAME	ID	NAME
1	Moratuwa	38	Kandy	213	Kuliyapitiya
2	Colombo	51	Matale	228	Maho
3	Kolonnawa	63	Ambagamuwa	229	Ibbagamuwa
4	Homagama	65	Haguranketa	230	Kurunegala
5	Nugegoda	66	Nuwara Eliya	234	Polgahawela
6	Kaduwela	74	Bentota	242	Puttalam
7	Hanwella	76	Habaraduwa	243	Chilaw
8	Kesbewa	80	Hikkaduwa	250	Kalpitiya
9	Maharagama	81	Galle	259	Nuwaragampalata
10	Dehiwala	83	Weligama	278	Tamankaduwa
12	Kelaniya	87	Matara	282	Passara
17	Ja Ela	94	Kotapola	289	Mahiyanganaya
18	Gmpaha	95	Akuressa	291	Welimada
19	Wattala	120	Jaffna	292	Badulla
21	Negambo	126	Tenmarachchi	299	Monaragala
22	Attanagalla	131	Vadamarachchi	317	Kuruwita
25	Panadura	148	Karachchi	318	Ratnapura
30	Kalutara	158	Nedunkerny	320	Yatiantota
32	Beruwala	159	Vavuniya South	322	Kegalle
33	Matugama	164	Patukudiyiruppu	325	Dehiowita
37	Udawalata	185	Ampara		

DS Area of UFMR Higher than National Average



Source: Annual Health Bulletin 2000

DISTRIBUTION OF HOUSING UNITS BY SOURCE OF DRINKING WATER AND TYPE OF TOILET BY PROVINCE* 1994



* Excludes Northern and Eastern Provinces

Source: Annual Health Bulletin 2000