

oval pit holes (only one of which is used at a time) and for the easy use and cleaning of the booths. The floor of the booths will be reinforced concrete. The superstructure will be brick masonry which is durable and presentable. The roof will comprise long aluminium sheets. The lids for the opening of the pits will be removable precast concrete plates with handles.

In front of the doors, a brick wall will be constructed for blinding purposes. While the UBE design extends the roof to this blinding wall, only the booths will be roofed under the Project.

The custom of removing solids from pit latrines does not appear to exist in general. It will, therefore, be necessary to obtain the understanding of people concerned in school on the need to maintain clean toilet facilities and to remove solids when the pits are full in view of the use of the newly constructed toilets for a long period of time.

Even though the arrangement of the booths in a single row in one building is economical and easy to construct, separate buildings for boys and girls will be constructed under the Project when the number of booths exceeds eight. Considering the local customs, no urinals for boys will be installed.

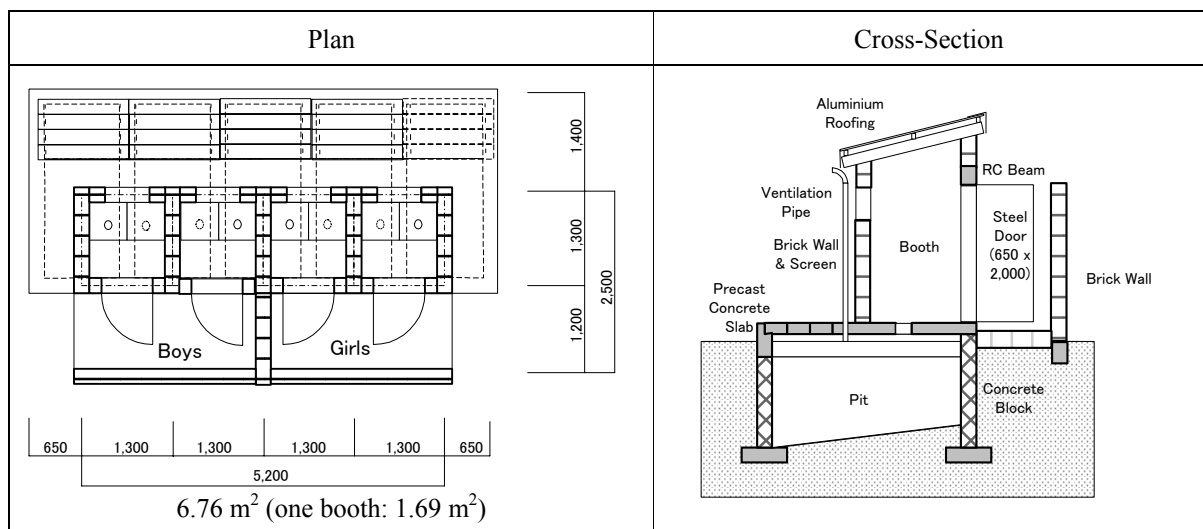


Fig. 2-2-4 Standard Design Drawings for Toilet Building  
(Case of Two Booths for Boys and Two Booths for Girls)

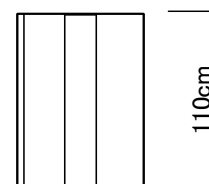
Number of Booths	Single Building Serving Both Boys and Girls (with Partition Walls)	Separate Buildings Serving Boys and Girls
2	<p>TW2 (3.38 m<sup>2</sup>)</p>	
4	<p>TW4 (6.76 m<sup>2</sup>)</p>	
5		<p>TS5 (8.45 m<sup>2</sup>)</p>
6		<p>TS6 (10.14 m<sup>2</sup>)</p>
7		<p>TS7 (11.83 m<sup>2</sup>)</p>
8		<p>TS8 (13.52 m<sup>2</sup>)</p>

Fig. 2-2-5 Different Types of Toilet Buildings

6) Outline of School Furniture and Fixtures to be Procured

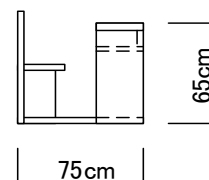
① Blackboards

Each classroom will be equipped with a blackboard (5.0 m x 1.2 m)



② Pupils Desks-Benches

Twenty-three sets of two seater integral desk-benches which are commonly used in primary schools in Nigeria will be provided (to seat 46 pupils) and placed parallel to the blackboard.



7) Scale of New Facilities and Furniture

The calculation results for the scale of the new facilities and quantity of furniture are shown in Table 2-2-11.

Table 2-2-11 Scale of New Facilities and Quantity of Furniture

Item		Niger	Plateau	Kaduna	Total
Target Schools	Number of Schools	12	26	32	70
Number of Facilities	Classroom	78	147	265	490
	Headmaster's Office and Store Room (units)	5	4	4	13
	Number of Toilet Booths	68	144	170	382
	Booths for Boys	(34)	(72)	(85)	(191)
	Booths for Girls	(34)	(72)	(85)	(191)
Floor Area	Classroom (m <sup>2</sup> )	4,368	8,232	14,840	27,440
	Headmaster's Office and Store Room (m <sup>2</sup> )	140	112	112	364
	Side Corridor (m <sup>2</sup> )	1,288	2,384	4,272	7,944
	Toilets (m <sup>2</sup> )	115	243	287	646
	Total Floor Area (m <sup>2</sup> )	5,911	10,971	19,511	36,394
Furniture/ Fixtures	Integral Desk-Bench (Two Seater) (sets)	1,794	3,381	6,095	11,270
	Blackboard	78	147	265	490
Deep Well	Deep Well with Hand Pump	4	10	5	19

#### **2.2.2.4 Water Supply Facility Plan**

##### **(1) Deep Well Design**

The planned deep well depth is 60 – 80 m for Hydrogeological Group 2 (Tertiary basalt), 50 – 60 m for Group 3 (Cretaceous sandstone), 20 – 60 m for Group 5 (gneiss and granite) and 60 – 80 m for Group 6 (schist) with favourable conditions. The average deep well depth will be 60 m.

The deep well diameter will be 100 mm to allow the installation of a hand pump for the deep well. As the groundwater at the project sites is often acidic, the casing and screen will be made of PVC to resist corrosion. A minimum of 6 m of grout sealing will be applied to prevent contamination due to infiltrated surface water. Fig. 2-2-6 shows the standard type of the planned deep well.

##### **(2) Design of Auxiliary Facilities**

At the top of the deep well, a concrete slab of 20 cm in thickness will be placed to prevent the infiltration of foul water. Spilt water will be guided via a 4 m long drainage ditch to the planted area of an infiltration pit at the end of the ditch. This planted area will be created by the PTA or local community as part of the arrangements to establish a body responsible for the maintenance of the deep well after its completion. Fig. 2-2-7 outlines the auxiliary facilities.

The outline of the Study schools and the selection process, the outline of the facilities to be introduced at the target schools and the list of facilities to be introduced are shown in Table 2-2-12, Table 2-2-13 and Table 2-2-14 respectively.

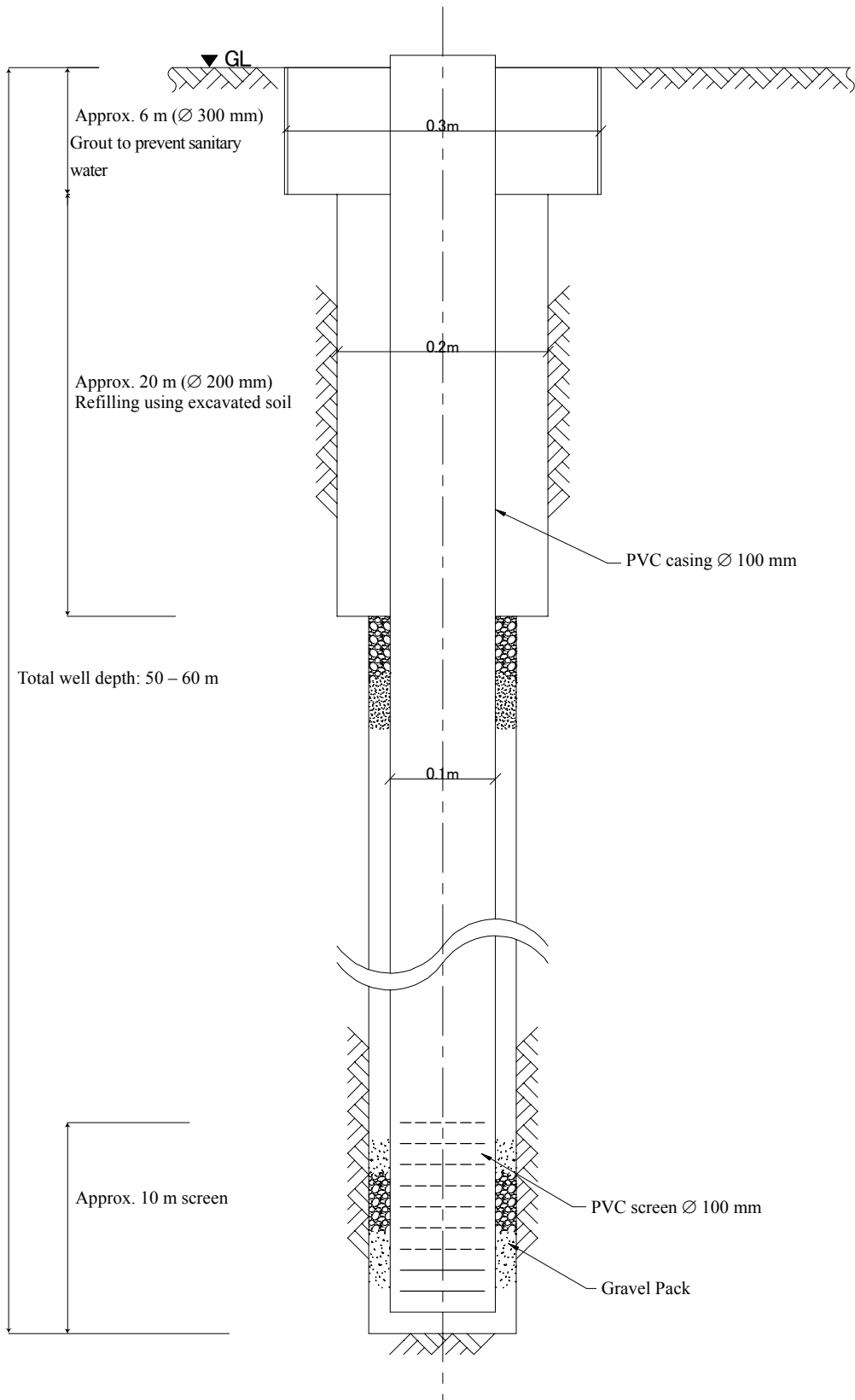


Fig. 2-2-6 Structural Drawing of Deep Well

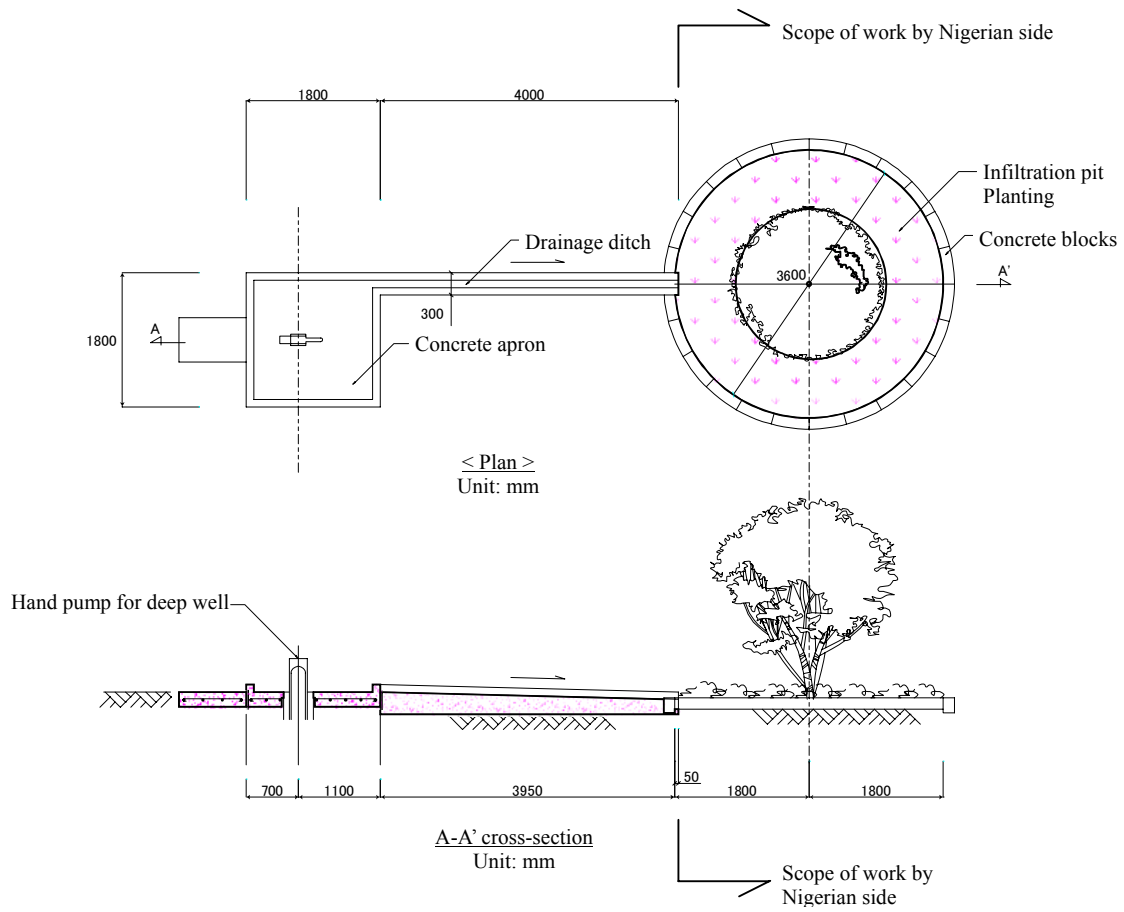


Fig. 2-2-7 Auxiliary Facilities for Deep Wells









Table 2-2-13 Outline of Facilities to be Prepared at the Project Schools

Original Serial No.	Study School No.	Project School No.	School Name	LGA	Number of Pupils	Current Conditions of Classrooms				(i) + (ii) + (iii)	Number of Classrooms to be Constructed	Number of Classrooms in the Future	Current Conditions of Headmaster's Room		Current Conditions of Toilets		Necessity for Deep Well (see p.22)	Headmaster's Unit to be Constructed	Number of Toilet Booths Based on One Booth per 90 Pupils (Two Classes)	Toilet Booths to be Constructed			Deep Wells to be Constructed
						Currently Usable Classrooms (i)	Classrooms Under Construction (ii)	Usable Classrooms with Repair (iii)	Unusable Classrooms (iv)				None	Yes, to be continually used	Number of usable toilet booth	Number of unusable toilet booth				Booths for Boys	Booths for Girls	Total	
Niger State																							
2	N2	NG-9	Korokpa	Paikolo	450	3	1	0	0	4	5	9		○	0	1	C		5	3	3	6	
3	N3	NG-11	Rafin Kuka	Shiroro	256	2	0	0	2	2	4	6	○		0	0	A	1	3	2	2	4	
5	N5	NG-12	Bakin Iku	Suleja	738	6	3	0	0	9	6	15		○	8	0	D		0	0	0	0	
8	N8	NG-8	Central Sarkipawa	Murya	759	8	3	0	0	11	7	18		○	3	0	C		5	3	3	6	
11	N11	NG-10	Rafin Mota	Rijau	541	6	0	0	0	6	6	12		○	0	0	B		6	3	3	6	
12	N12	NG-1	Etsu Nuhu	Agia	450	6	0	0	0	6	3	9		○	0	0	B		5	3	3	6	
13	N13	NG-4	Makafu UBE Prim. Sch	Gbako	202	0	0	0	0	3	3	6	○		0	0	C	1	2	1	1	2	
14	N14	NG-3	Sangi	Edati	266	1	1	0	0	2	4	6		○	2	0	B		1	1	1	2	
15	N15	NG-2	Tudunfulani Gabas	Bosso	212	0	0	0	0	0	6	6	○		0	0	E	1	2	1	1	2	
17	N17	NG-6	Salka Cent	Magama	1,403	13	0	0	0	13	17	30	○		0	0	D	1	16	8	8	16	
19	N19	NG-7	Bangi Cent	Mariga	1,017	14	0	0	0	14	10	24	○		0	0	C	1	11	6	6	12	
20	N20	NG-5	Bussu	Lavun	570	4	1	0	0	5	7	12		○	0	0	C		6	3	3	6	
			Total		6,864	63	9	0	2	72	78	150	5	8	13	1		5	62	34	34	68	
Plateau State																							
72	P1	PL-24	Kwakwi Station LEA	Riyom	158	0	0	0	2	0	3	3	○		0	0	C	1	2	1	1	2	
73	P2	PL-12	Ungwa Hausawa LEA	Kanam	580	0	1	0	2	1	11	12	○		0	0	A	1	6	3	3	6	
76	P5	PL-22	Zomo Nom.	Mikang	442	1	0	0	0	1	8	9		○	0	0	A		5	3	3	6	
77	P6	PL-19	Angwan Baraya	Mikang	273	2	0	0	0	2	4	6		○	0	0	B		3	2	2	4	
79	P8	PL-25	Kuka Primary School	Shendam	779	6	0	0	0	6	12	18		○	0	0	E		9	5	5	10	
82	P11	PL-16	Lohmak LEA	Langtang North	411	2	0	0	0	2	7	9		○	0	0	C		5	3	3	6	
83	P12	PL-18	Ndem LEA	Langtang North	521	4	0	0	0	4	8	12		○	0	0	B		6	3	3	6	
84	P13	PL-1	LEA Werch	Barkin Ladi	250	2	0	0	0	2	4	6	○		0	0	C	1	3	2	2	4	
85	P14	PL-2	St. Philips Gana-Ropp	Barkin Ladi	523	6	0	0	0	6	6	12		○	0	0	B		6	3	3	6	
86	P15	PL-5	Butura Kampani	Bokkos	376	6	0	0	0	6	3	9		○	0	0	C		4	2	2	4	
87	P16	PL-6	LEA Gada	Jos East	552	6	0	0	0	6	6	12		○	0	0	C		6	3	3	6	
88	P17	PL-4	Ecwa Miango	Bassa	633	7	0	2	4	9	6	15		○	0	0	C		7	4	4	8	
91	P20	PL-7	Gwong LEA	Jos North	1,143	10	0	4	0	14	10	24		○	0	10	D		13	7	7	14	
92	P21	PL-10	Gar Primay School	Kanam	542	4	2	0	0	6	6	12		○	0	0	C		6	3	3	6	
93	P22	PL-14	Gyangyang LEA	Kanke	388	2	3	0	2	5	4	9	○		0	0	B	1	4	2	2	4	
94	P23	PL-17	Maggai LEA	Langtang North	287	1	0	0	0	1	5	6		○	0	0	B		3	2	2	4	
99	P28	PL-23	Gol-Hoss LEA	Riyom	285	2	0	0	0	2	4	6		○	0	0	A		3	2	2	4	
103	P32	PL-3	Binci LEA	Bassa	406	6	0	0	0	6	3	9		○	0	0	C		5	3	3	6	
105	P34	PL-13	Bolkon LEA	Kanke	253	2	0	1	3	3	3	6		○	0	0	B		3	2	2	4	
106	P35	PL-15	Sharam LEA	Kanke	295	3	0	0	0	3	3	6		○	0	0	C		3	2	2	4	
107	P36	PL-20	LEA Millet	Mangu	395	6	0	0	0	6	3	9		○	6	0	B		0	0	0	0	
108	P37	PL-21	Ekan Garkawa	Mikang	749	6	3	0	0	9	9	18		○	0	0	C		8	4	4	8	
116	P45	PL-8	Ekan Zawan	Jos South	570	6	3	0	0	9	3	12		○	0	0	C		6	3	3	6	
117	P46	PL-11	Kingyel LEA	Kanam	436	4	0	0	0	4	5	9		○	0	0	D		5	3	3	6	
120	P49	PL-9	LEA Kanadap	Jos South	401	3	0	0	0	3	6	9		○	0	0	C		4	2	2	4	
121	P50	PL-26	Pilot Lamba	Wase	552	7	0	0	0	7	5	12		○	0	0	A		6	3	3	6	
			Total		12,200	104	12	7	13	123	147	270	4	22	6	10		4	131	72	72	144	
Kaduna State																							
23	K2	KD-5	Auchan Central	Ikara	810	11	0	0	0	11	7	18		○	1	7	D		8	4	4	8	
24	K3	KD-6	Kuryas	Jaba	911	6	0	0	0	6	15	21		○	0	0	C		10	5	5	10	
25	K4	KD-8	Ung. Rana Baduku	Jama'a	1,005	2	0	2	2	4	17	21		○	0	0	C		11	6	6	12	
27	K6	KD-2	Gwagwada	Chikun	371	4	2	0	0	6	3	9		○	3	0	C		1	1	1	2	
28	K7	KD-19	Gadas	Kubau	185	0	0	0	0	0	3	3	○		0	0	A	1	2	1	1	2	
29	K8	KD-10	Kurmin Biri I	Kachia	506	5	0	0	0	5	7	12		○	0	0	C		6	3	3	6	
31	K10	KD-4	Gadangayan	Igabi	922	8	0	0	0	8	13	21		○	0	0	B		10	5	5	10	
32	K11	KD-13	Shadarafiya	Kagarko	473	5	0	0	0	5	7	12		○	0	0	C		5	3	3	6	
33	K12	KD-21	Likoro	Kudan	893	11	0	0	0	11	10	21		○	0	0	C		10	5	5	10	
34	K13	KD-15	Saflogida	Kaura	517	4	0	0	0	4	8	12		○	6	0	C		0	0	0	0	
36	K15	KD-14	Doka	Kajuru	539	6	0	3	0	9	3	12		○	6	0	D		0	0	0	0	
37	K16	KD-22	Ung. Madauchi	Kudan	263	0	1	0	0	1	5	6		○	6	0	C		0	0	0	0	
38	K17	KD-18	Zanbina	Kauru	550	8	0	0	0	8	4	12		○	0	0	C		6	3	3	6	
41	K20	KD-23	Maigama	Lere	447	6	0	0	0	6	3	9		○	0	0	C		5	3	3	6	
44	K23	KD-29	Sakwan	Z/Katuf	368	2	2	0	0	4	5	9		○	0	0	E		4	2	2	4	
45	K24	KD-32	Tankarau Nomadic	Zaria	421	4	2	0	0	6	3	9		○	4	0	C		1	1	1	2	
47	K26	KD-30	Zonkwa VI	Z/Katuf	930	9	0	0	0	9	12	21		○	2	0	C		8	4	4	8	
49	K28	KD-25	Sada	Makarfi	665	7	0	0	0	7	8	15		○	12	0	C		0	0	0	0	
50	K29	KD-16	Zankan	Kaura	383	3	0	1	2	4	5	9		○	2	0	C		2	1	1	2	
51	K30	KD-1	Dawaki Bassa	B/Gwari	747	1	0	6	0	7	11	18		○	0	0	C		8	4	4	8	
53	K32	KD-20	Udg. Sarki Pambeguwa	Kubau	738	2	2	2	0	6	9	15	○		6	0	C	1	2	1	1	2	
54	K33	KD-7	LEA Asso	Jama'a	1,030	1	0	0	1	1	23	24	○		0	0	C	1	11	6	6	12	
55	K34	KD-27	Soba Central	Soba	1,081	15	0	1	0	16	8	24		○	16	0	C		0	0	0	0	
58	K37	KD-31	Abdulrahman Mora	Zaria	629	4	0	0	2	4	11	15		○	4	0	D		3	2	2	4	
59	K38	KD-28	Kamuru II	Z/Katuf	449	5	0	0	0	5	4	9		○	2	3	C		3	2	2	4	
60	K39	KD-24	Kadabo	Makarfi	203	0	0	0	0	0	6	6	○		2	0	C	1	0	0	0	0	
62	K41	KD-17	Danmaikogi I	Kauru	338	2	0	0	0	2	7	9		○	0	3	C		4	2	2	4	
63	K42	KD-26	Jushi	Sabongari	1,031	6	0	0	0	6	18	24											

Table 2-2-14 List of Facilities to be Provided at the Project Schools

Study School No.	Project School No.	School Name	LGA	Number of Pupils	Classrooms to be Constructed	H/M's Unit to be Constructed	Toilet Booths to be Constructed			Deep Wells to be Constructed	Floor Area (m <sup>2</sup> )						Desk-Bench Sets (Two Seaters)	
							Booths for Boys	Booths for Girls	Total		Classroom (m <sup>2</sup> )	H/M's Unit (m <sup>2</sup> )	Side Corridor (m <sup>2</sup> )	Classroom Building Total (m <sup>2</sup> )	Toilet Building (m <sup>2</sup> )	Total Floor Area (m <sup>2</sup> )		
																		A3
Niger State																		
N2	NG-9	Korokpa	Paikolo	450	5	0	3	3	6	0	280	0	80	360	10	370	115	
N3	NG-11	Rafin Kuka	Shiroro	256	4	1	2	2	4	1	224	28	72	324	7	331	92	
N5	NG-12	Bakin Iku	Suleja	738	6	0	0	0	0	0	336	0	96	432	0	432	138	
N8	NG-8	Central Sarkipawa	Murya	759	7	0	3	3	6	0	392	0	112	504	10	514	161	
N11	NG-10	Rafin Mota	Rijau	541	6	0	3	3	6	1	336	0	96	432	10	442	138	
N12	NG-1	Etsu Nuhu	Agate	450	3	0	3	3	6	1	168	0	48	216	10	226	69	
N13	NG-4	Makafu UBE Prim. Sch	Gbako	202	3	1	1	1	2	0	168	28	56	252	3	255	69	
N14	NG-3	Sangi	Edati	266	4	0	1	1	2	1	224	0	64	288	3	291	92	
N15	NG-2	Tudunfulani Gabas	Bosso	212	6	1	1	2	0	336	28	104	468	3	471	138		
N17	NG-6	Salka Cent.	Magama	1,403	17	1	8	8	16	0	952	28	280	1,260	27	1,287	391	
N19	NG-7	Bangi Cent	Mariga	1,017	10	1	6	6	12	0	560	28	168	756	20	776	230	
N20	NG-5	Bussu	Lavun	570	7	0	3	3	6	0	392	0	112	504	10	514	161	
Number of schools				12	6,864	78	5	34	34	68	4	4,368	140	1,288	5,796	115	5,911	1,794
Plateau State																		
P1	PL-24	Kwakwi Station LEA	Riyom	158	3	1	1	1	2	0	168	28	56	252	3	255	69	
P2	PL-12	Ungwa Hausau LEA	Kanam	580	11	1	3	3	6	0	616	28	184	828	10	838	253	
P5	PL-22	Zomo Nomadic	Mikang	442	8	0	3	3	6	1	448	0	128	576	10	586	184	
P6	PL-19	Angwan Baraya	Mikang	273	4	0	2	2	4	1	224	0	64	288	7	295	92	
P8	PL-25	Kuka Primary School	Shendam	779	12	0	5	5	10	0	672	0	192	864	17	881	276	
P11	PL-16	Lohmak LEA	Langtang North	411	7	0	3	3	6	0	392	0	112	504	10	514	161	
P12	PL-18	Ndem LEA	Langtang North	521	8	0	3	3	6	1	448	0	128	576	10	586	184	
P13	PL-1	LEA Wereh	Barkin Ladi	250	4	1	2	2	4	0	224	28	72	324	7	331	92	
P14	PL-2	St. Philips Gana-Ropp	Barkin Ladi	523	6	0	3	3	6	1	336	0	96	432	10	442	138	
P15	PL-5	Butura Kampani	Bokkos	376	3	0	2	2	4	0	168	0	48	216	7	223	69	
P16	PL-6	LEA Gada	Jos East	552	6	0	3	3	6	0	336	0	96	432	10	442	138	
P17	PL-4	Ecwa Miango	Bassa	633	6	0	4	4	8	0	336	0	96	432	14	446	138	
P20	PL-7	Gwong LEA	Jos North	1,143	10	0	7	7	14	0	560	0	160	720	24	744	230	
P21	PL-10	Gar Primay School	Kanam	542	6	0	3	3	6	0	336	0	96	432	10	442	138	
P22	PL-14	Gwangyang LEA	Kanke	388	4	1	2	2	4	1	224	28	72	324	7	331	92	
P23	PL-17	Maggai LEA	Langtang North	287	5	0	2	2	4	1	280	0	80	360	7	367	115	
P28	PL-23	Gol-Hoss LEA	Riyom	285	4	0	2	2	4	1	224	0	64	288	7	295	92	
P32	PL-3	Binchi LEA	Bassa	406	3	0	3	3	6	0	168	0	48	216	10	226	69	
P34	PL-13	Bolkon LEA	Kanke	253	3	0	2	2	4	1	168	0	48	216	7	223	69	
P35	PL-15	Sharam LEA	Kanke	295	3	0	2	2	4	0	168	0	48	216	7	223	69	
P36	PL-20	LEA Millet	Mangu	395	3	0	0	0	0	1	168	0	48	216	0	216	69	
P37	PL-21	Ekan Garkawa	Mikang	749	9	0	4	4	8	0	504	0	144	648	14	662	207	
P45	PL-8	Ekan Zawan	Jos South	570	3	0	3	3	6	0	168	0	48	216	10	226	69	
P46	PL-11	Kingyel LEA	Kanam	436	5	0	3	3	6	0	280	0	80	360	10	370	115	
P49	PL-9	LEA Kanadap	Jos South	401	6	0	2	2	4	0	336	0	96	432	7	439	138	
P50	PL-26	Pilot Lamba	Wase	552	5	0	3	3	6	1	280	0	80	360	10	370	115	
Number of schools				26	12,200	147	4	72	72	144	10	8,232	112	2,384	10,728	243	10,971	3,381
Kaduna State																		
K2	KD-5	Auchan Central	Ikara	810	7	0	4	4	8	0	392	0	112	504	14	518	161	
K3	KD-6	Kuryas	Jaba	911	15	0	5	5	10	0	840	0	240	1,080	17	1,097	345	
K4	KD-8	Ung. Rana Baduku	Jama'a	1,005	17	0	6	6	12	0	952	0	272	1,224	20	1,244	391	
K6	KD-2	Gwagwada	Chikun	371	3	0	1	1	2	0	168	0	48	216	3	219	69	
K7	KD-19	Gadas	Kubau	185	3	1	1	1	2	1	168	28	56	252	3	255	69	
K8	KD-10	Kurmin Biri I	Kachia	506	7	0	3	3	6	0	392	0	112	504	10	514	161	
K10	KD-4	Gadangayan	Igabi	922	13	0	5	5	10	1	728	0	208	936	17	953	299	
K11	KD-13	Shadarafiya	Kagarko	473	7	0	3	3	6	0	392	0	112	504	10	514	161	
K12	KD-21	Likoro	Kudan	893	10	0	5	5	10	0	560	0	160	720	17	737	230	
K13	KD-15	Safiojida	Kaura	517	8	0	0	0	0	448	0	128	576	0	576	184		
K15	KD-14	Doka	Kajuru	539	3	0	0	0	0	0	168	0	48	216	0	216	69	
K16	KD-22	Ung. Madauchi	Kudan	263	5	0	0	0	0	280	0	80	360	0	360	115		
K17	KD-18	Zanbina	Kauru	550	4	0	3	3	6	0	224	0	64	288	10	298	92	
K20	KD-23	Maigamo	Lere	447	3	0	3	3	6	0	168	0	48	216	10	226	69	
K23	KD-29	Sakwan	Z/Kataf	368	5	0	2	2	4	0	280	0	80	360	7	367	115	
K24	KD-32	Tankarau Nomadic	Zaria	421	3	0	1	1	2	0	168	0	48	216	3	219	69	
K26	KD-30	Zonkwa VI	Z/Kataf	930	12	0	4	4	8	0	672	0	192	864	14	878	276	
K28	KD-25	Sada	Makarfi	665	8	0	0	0	0	448	0	128	576	0	576	184		
K29	KD-16	Zankan	Kaura	383	5	0	1	1	2	0	280	0	80	360	3	363	115	
K30	KD-1	Dawaki Bassa	B/Gwari	747	11	0	4	4	8	0	616	0	176	792	14	806	253	
K32	KD-20	Udg. Sarki Pambeguwa	Kubau	738	9	1	1	1	2	0	504	28	152	684	3	687	207	
K33	KD-7	LEA Asso	Jama'a	1,030	23	1	6	6	12	0	1,288	28	376	1,692	20	1,712	529	
K34	KD-27	Soba Central	Jama'a	1,081	8	0	0	0	0	448	0	128	576	0	576	184		
K37	KD-31	Abdulrahman Mora	Zaria	629	11	0	2	2	4	0	616	0	176	792	7	799	253	
K38	KD-28	Kamuru II	Z/Kadaf	449	4	0	2	2	4	0	224	0	64	288	7	295	92	
K39	KD-24	Kadabo	Makarfi	203	6	1	0	0	0	336	28	104	468	0	468	138		
K41	KD-17	Danmaikogi I	Kauru	338	7	0	2	2	4	0	392	0	112	504	7	511	161	
K42	KD-26	Jushi	Sabongari	1,031	18	0	4	4	8	0	1,008	0	288	1,296	14	1,310	414	
K44	KD-3	Kaya	Giwa	781	11	0	5	5	10	1	616	0	176	792	17	809	253	
K46	KD-9	Katambi	Kachia	254	5	0	2	2	4	1	280	0	80	360	7	367	115	
K47	KD-11	Ibrahim Taiwo	Kaduna North	1,027	4	0	6	6	12	0	224	0	64	288	20	308	92	
K49	KD-12	Kushe II	Kagarko	613	10	0	4	4	8	1	560	0	160	720	14	734	230	
Number of schools				32	20,080	265	4	85	85	170	5	14,840	112	4,272	19,224	287	19,511	6,095
Total				70	39,144	490	13	191	191	382	19	27,440	364	7,944	35,748	646	36,394	11,270

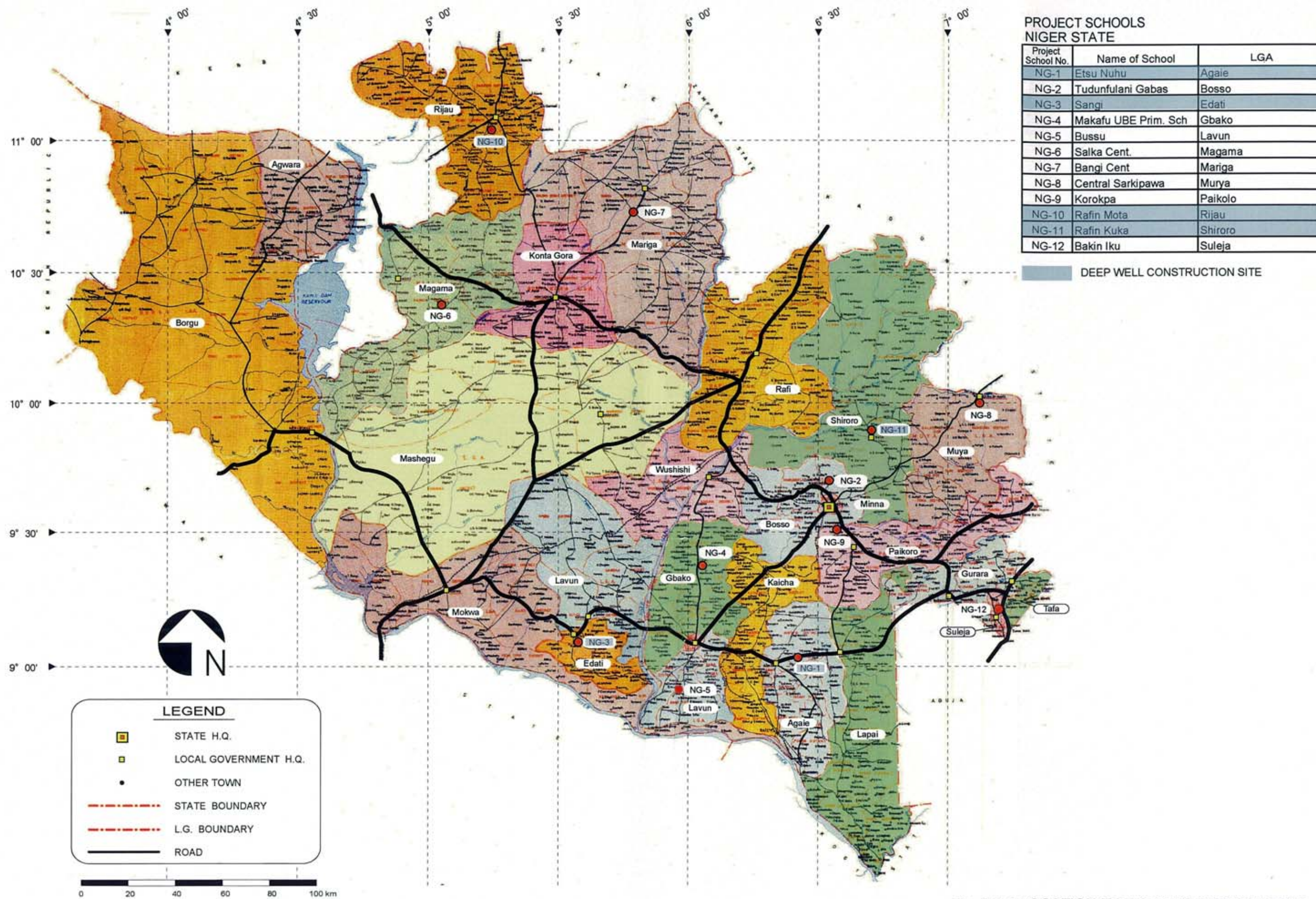
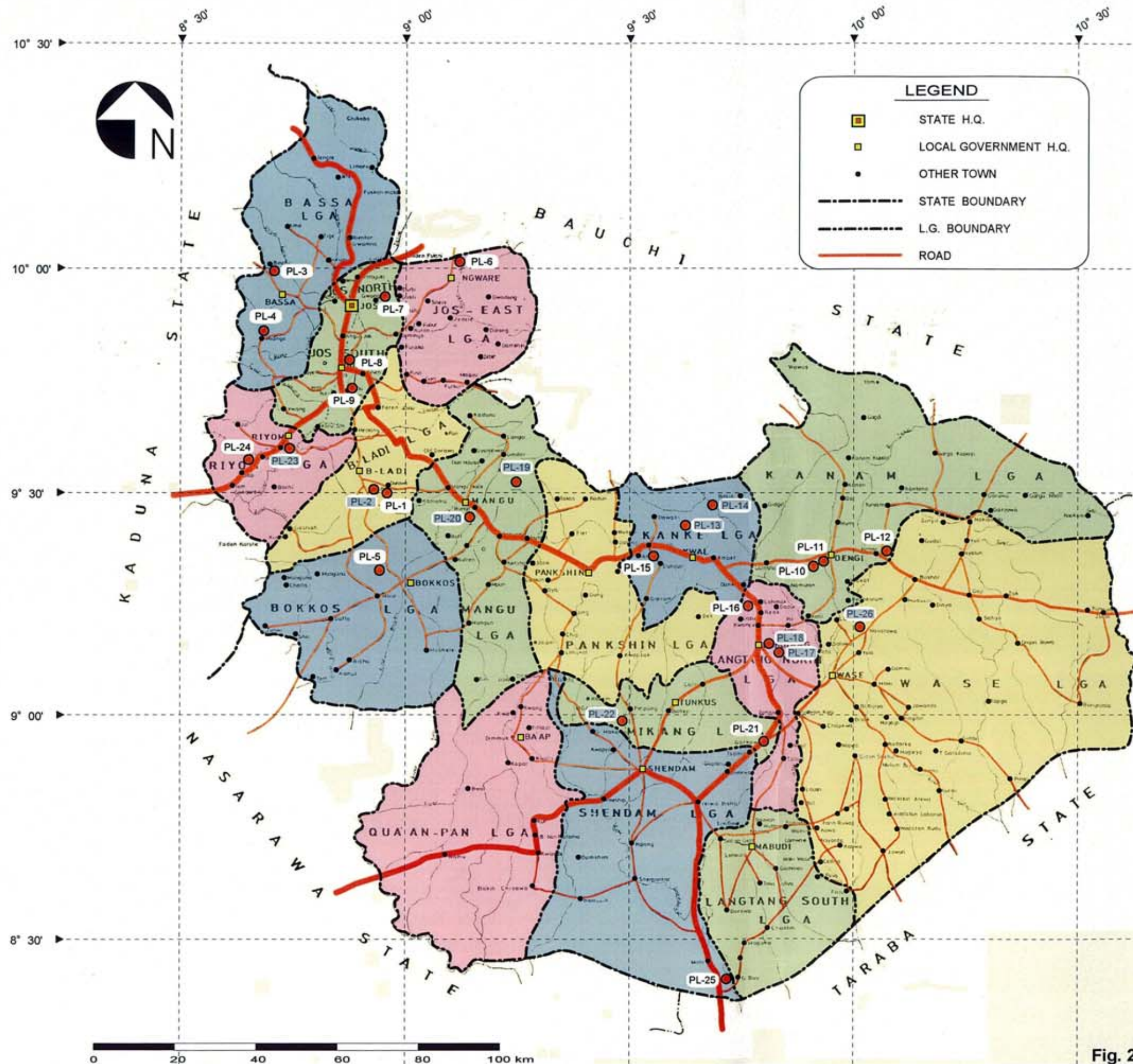


Fig. 2-2-8 LOCATION MAP OF PROJECT SCHOOLS [NIGER STATE]

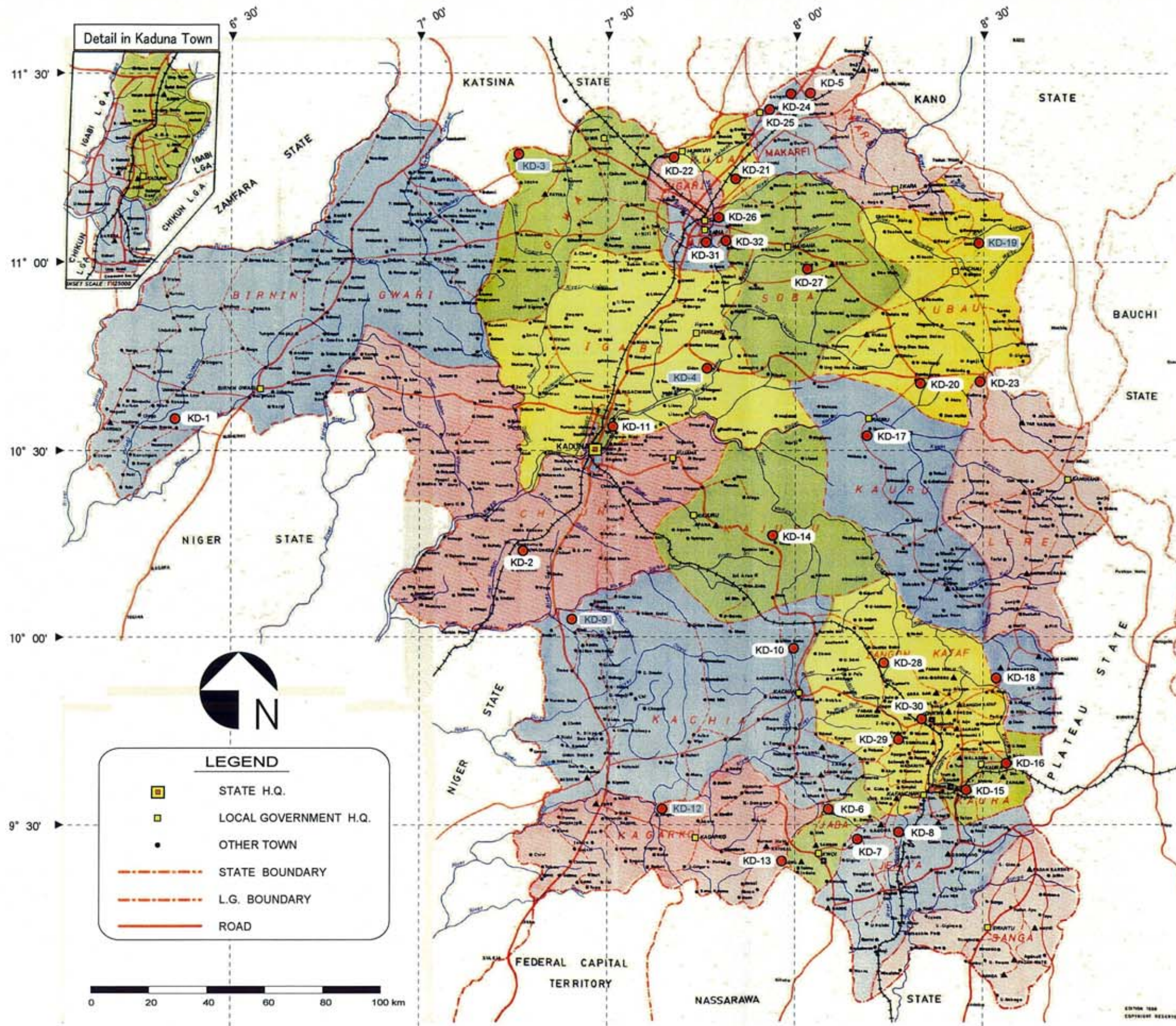


**PROJECT SCHOOLS  
PLATEAU STATE**

Project School No.	Name of School	LGA
PL-1	LEA Wereh	Barkin Ladi
PL-2	St. Philips Gana-Ropp	Barkin Ladi
PL-3	Binchi LEA	Bassa
PL-4	Ecwa Miango	Bassa
PL-5	Butura Kampani	Bokkos
PL-6	LEA Gada	Jos East
PL-7	Gwong LEA	Jos North
PL-8	Ekan Zawan	Jos South
PL-9	LEA Kanadap	Jos South
PL-10	Gar Primay School	Kanam
PL-11	Kingel LEA	Kanam
PL-12	Ungwa Hauswa LEA	Kanam
PL-13	Bolkon LEA	Kanke
PL-14	Gyangyang LEA	Kanke
PL-15	Sharam LEA	Kanke
PL-16	Lohmak LEA	Langtang North
PL-17	Maggai LEA	Langtang North
PL-18	Ndem LEA	Langtang North
PL-19	Angwan Baraya	Mangu
PL-20	LEA Millet	Mangu
PL-21	Ekan Garkawa	Mikang
PL-22	Zomo Nom	Mikang
PL-23	Gol-Hoss LEA	Riyom
PL-24	Kwakwi Station LEA	Riyom
PL-25	Kuka Primary School	Shendam
PL-26	Pilot Lamba	Wase

■ DEEP WELL CONSTRUCTION SITE

**Fig. 2-2-9 LOCATION MAP OF PROJECT SCHOOLS [PLATEAU STATE]**



**PROJECT SCHOOLS  
KADUNA STATE**

Project School No.	Name of School	LGA
KD-1	Dawaki Bassa	B/Gwari
KD-2	Gwagwada	Chikun
KD-3	Kaya	Giwa
KD-4	Gadangayan	Igabi
KD-5	Auchan Central	Ikara
KD-6	Kuryas	Jaba
KD-7	LEA Asso	Jama'a
KD-8	Ung. Rana Baduku	Jama'a
KD-9	Katambi	Kachia
KD-10	Kurmin Biri I	Kachia
KD-11	Ibrahim Taiwo	Kaduna North
KD-12	Kushe II	Kagarko
KD-13	Shadarafiya	Kagarko
KD-14	Doka	Kajuru
KD-15	Safiogida	Kaura
KD-16	Zankan	Kaura
KD-17	Danmaikogi I	Kauru
KD-18	Zanbina	Kauru
KD-19	Gadas	Kubau
KD-20	Udq. Sarki Pambeguwa	Kubau
KD-21	Likoro	Kudan
KD-22	Ung. Madauchi	Kudan
KD-23	Maigamo	Lere
KD-24	Kadabo	Makarfi
KD-25	Sada	Makarfi
KD-26	Jushi	Sabongari
KD-27	Soba Central	Soba
KD-28	Kamuru II	Z/Kadaf
KD-29	Sakwan	Z/Kataf
KD-30	Zonkwa VI	Z/Kataf
KD-31	Abdulrahman Mora	Zaria
KD-32	Tankarau Nomadic	Zaria

DEEP WELL CONSTRUCTION SITE

**Fig. 2-2-10 LOCATION MAP OF PROJECT SCHOOLS  
[KADUNA STATE]**