

**BPSTC APPLIANCE TEST REPORTS
1999**

Sample Code	Company	Product	Brand	Date Received	Date Issued	Processing Days
99-0067	Chang Huat	Flat Iron	Standard	25.Jan.99	16.Feb.99	17
99-0132A	Chin Yi	Flat Iron	Labelle	10.Feb.99	17.Mar.99	26
99-0132B	Chin Yi	Flat Iron	Labelle	10.Feb.99	17.Mar.99	26
99-0177	3D	Flat Iron	3D	23.Feb.99	4.Mar.99	8
99-0183A	Philacor	Refrigerator	White Westinghouse	24.Feb.99	15.Jul.99	102
99-0183B	Philacor	Refrigerator	White Westinghouse	24.Feb.99	15.Jul.99	102
99-0302	Philips	Flat Iron	Philips	29.Mar.99	5.May.99	28
99-0305	tisdall	Flat Iron	Standard	30.Mar.99	13.May.99	33
99-0354A	Focus Global	Flat Iron	Oster	15.Apr.99	12.May.99	20
99-0354B	Focus Global	Flat Iron	Oster	15.Apr.99	12.May.99	20
99-0477	Chin Yi	Flat Iron	Labelle	17.May.99	1.Jun.99	12
99-0478	Chin Yi	Rice Cooker		17.May.99	8.Jun.99	17
99-0485A	New Behnelyn	Flat Iron	Toyo	18.May.99	3.Jun.99	13
99-0485B	New Behnelyn	Flat Iron	Toyo	18.May.99	3.Jun.99	13
99-0529	Marubishi	Flat Iron	Marubishi	25.May.99	18.Jun.99	19
99-0539	Evergood	Flat Iron	Imarflex	27.May.99	30.Jun.99	25
99-0546A	Chin Yi	Flat Iron	Labelle	28.May.99	23.Jun.99	19
99-0546B	Chin Yi	Flat Iron	Labelle	28.May.99	23.Jun.99	19
99-0558A	Sanyo Philippines	Refrigerator	Sanyo	1.Jun.99	16.Aug.99	55
99-0558B	Sanyo Philippines	Refrigerator	Sanyo	1.Jun.99	16.Aug.99	55
99-0558C	Sanyo Philippines	Refrigerator	Sanyo	1.Jun.99	16.Aug.99	55
99-0559A	Sanyo Philippines	Refrigerator	Sanyo	1.Jun.99	16.Aug.99	55
99-0559B	Sanyo Philippines	Refrigerator	Sanyo	1.Jun.99	16.Aug.99	55
99-0560A	Sanyo Philippines	Refrigerator	Sanyo	1.Jun.99	16.Aug.99	55
99-0560B	Sanyo Philippines	Refrigerator	Sanyo	1.Jun.99	16.Aug.99	55
99-0651A	Hanabishi	Flat Iron	Hanabishi	23.Jun.99	12.Nov.99	103
99-0651B	Hanabishi	Flat Iron	Hanabishi	23.Jun.99	29.Jul.99	27
99-0651C	Hanabishi	Flat Iron	Hanabishi	23.Jun.99	29.Jul.99	27
99-0702	Marubishi	Rice Cooker	Marubishi	6.Jul.99	4.Aug.99	22
99-0718	Haier	Refrigerator	Haier	7.Jul.99	28.Sep.99	60
99-0713A	New Behnelyn	Flat Iron	TY-9	12.Jul.99	9.Aug.99	21
99-0713B	New Behnelyn	Flat Iron	TY-10	12.Jul.99	9.Aug.99	21
99-0724	Asian Durables	Refrigerator	Daewoo	13.Jul.99	20.Sep.99	50
99-0730A	Chin Yi	Flat Iron		14.Jul.99	19.Jul.99	4
99-0730B	Chin Yi	Flat Iron		14.Jul.99	19.Jul.99	4
99-0773	Mitsukoshi	Flat Iron	Mitsukoshi	22.Jul.99	30.Jul.99	7
99-0782A	New Behnelyn	Flat Iron	Toyo	27.Jul.99	11.Aug.99	12
99-0782B	New Behnelyn	Flat Iron	Toyo	27.Jul.99	11.Aug.99	12
99-0844	Tecnogas	Rice Cooker	Tecnogas	13.Aug.99	17.Jan.00	112
99-0855	Camel	Flat Iron	Camel	17.Aug.99	15.Nov.99	65
99-0863A	Trishvi	Flat Iron	Nakanishi	17.Aug.99	12.Nov.99	64
99-0863B	Trishvi	Flat Iron	Nakanishi	17.Aug.99	12.Nov.99	64
99-0863C	Trishvi	Flat Iron	Nakanishi	17.Aug.99	12.Nov.99	64
99-0863D	Trishvi	Flat Iron	Nakanishi	17.Aug.99	12.Nov.99	64
99-0864A	NAJ	Flat Iron		17.Aug.99	12.Nov.99	64
99-0864B	NAJ	Flat Iron		17.Aug.99	12.Nov.99	64
99-0887	Northern Island	Flat Iron	3D	23.Aug.99	6.Oct.99	33
99-0948	Philacor	Refrigerator	White Westinghouse	6.Sep.99	18.Jan.00	97

Highlights indicate retest period.

BPSTC APPLIANCE TEST REPORTS
1999

99-0949	Philacor	Refrigerator	White Westinghouse	6.Sep.99	18.Jan.00	97
99-0951A	Philips	Rice Cooker	Philips	6.Sep.99	5.Nov.99	45
99-0951B	Philips	Rice Cooker	Philips	6.Sep.99	5.Nov.99	45
99-0951C	Philips	Rice Cooker	Philips	6.Sep.99	5.Nov.99	45
99-0951D	Philips	Rice Cooker	Philips	6.Sep.99	5.Nov.99	45
99-0962	HOA Industrial	Rice Cooker	NG-1	8.Sep.99	15.Dec.99	71
99-0970A	Haier	Refrigerator	Haier	13.Sep.99	14.Dec.99	67
99-0970B	Haier	Refrigerator	Haier	13.Sep.99	14.Dec.99	67
99-0981A	MEPCO	Refrigerator	National	13.Sep.99	10.Nov.99	43
99-0981B	MEPCO	Refrigerator	National	13.Sep.99	10.Nov.99	43
99-0984	Kolin	Rice Cooker	Kolin	13.Sep.99	15.Oct.99	25
99-0996	Chabhee	Flat Iron	Imarflex	15.Sep.99	8.Oct.99	18
99-1078	Mitsukoshi	Flat Iron	Mitsukoshi	27.Sep.99	28.Sep.99	2
99-1079	El Neuchi	Flat Iron	Kolin	27.Sep.99	26.Oct.99	22
99-1083A	Union	Flat Iron	GE Tpye	28.Sep.99	18.Jan.00	81
99-1083B	Union	Flat Iron	National type	28.Sep.99	18.Jan.00	81
99-1100	Hanabishi	Rice Cooker	Hanabishi	30.Sep.99	15.Dec.99	55
99-1108A	Kinsonic	Flat Iron	Sasio	4.Oct.99	22.Nov.99	36
99-1108B	Kinsonic	Flat Iron	Durastar	4.Oct.99	22.Nov.99	36
99-1108C	Kinsonic	Flat Iron	Legacy	4.Oct.99	22.Nov.99	36
99-1108D	Kinsonic	Flat Iron	Whrilpool	4.Oct.99	22.Nov.99	36
99-1131	chang Fa	Rice Cooker	Standard	6.Oct.99	8.Nov.99	24
99-1131	chang Fa	Rice Cooker	Standard	6.Oct.99	8.Nov.99	24
99-1150	Chin Yi	Flat Iron	Labelle	11.Oct.99	15.Nov.99	26
99-1162	Camel	Flat Iron	Camel	12.Oct.99	22.Nov.99	30
99-1169a	Vicsal	Rice Cooker	Daiwa	13.Oct.99	15.Dec.99	46
99-1169b	Vicsal	Flat Iron	Daiwa	13.Oct.99	15.Dec.99	46
99-1169c	Vicsal	Flat Iron	Daiwa	13.Oct.99	15.Dec.99	46
99-1190A	Wimpex	Flat Iron		18.Oct.99	22.Nov.99	26
99-1190B	Wimpex	Flat Iron		18.Oct.99	22.Nov.99	26
99-1197	Tecnogas	Flat Iron	Turbora	19.Oct.99	17.Jan.00	65
99-1232A	3D	Rice Cooker	3D	26.Oct.99	15.Dec.99	37
99-1232B	3D	Rice Cooker	3D	26.Oct.99	15.Dec.99	37
99-1232C	3D	Rice Cooker	3D	26.Oct.99	15.Dec.99	37
99-1232D	3D	Rice Cooker	3D	26.Oct.99	15.Dec.99	37
99-1232E	3D	Rice Cooker	3D	26.Oct.99	15.Dec.99	37
99-1256	Chin Yi	Rice Cooker	Labelle	3.Nov.99	14.Jan.00	53
99-1303	Sitaldasons	Rice Cooker	Sansai	9.Nov.99	26.Jan.00	57
99-1316	El nEuchi	Flat Iron	Kolin	11.Nov.99	24.Nov.99	10
99-1317A	Mitsukoshi	Flat Iron	Mitsukoshi	11.Nov.99	24.Jan.00	53
99-1317C	Mitsukoshi	Flat Iron	Mitsukoshi	11.Nov.99	24.Jan.00	53
99-1318A	Kitchen Beauty	Flat Iron	Kyowa	11.Nov.99	3.Jan.00	38
99-1318B	Kitchen Beauty	Flat Iron	Kyowa	11.Nov.99	3.Jan.00	38
99-1324A	Kinsonic	Flat Iron	best Haus	12.Nov.99	5.Apr.00	104
99-1324B	Kinsonic	Flat Iron	Mitsuboshi	12.Nov.99	5.Apr.00	104
99-1324C	Kinsonic	Flat Iron	Star	12.Nov.99	5.Apr.00	104
99-1324D	Kinsonic	Flat Iron	Keyware	12.Nov.99	5.Apr.00	104
99-1129	Mitsukoshi	Flat Iron	Mitsukoshi	20.Nov.99	8.Dec.99	13
99-1404	Chabhee	Flat Iron	Imarflex	24.Nov.99	5.Jan.00	31
99-1407A	Hanabishi	Flat Iron	Hanabishi	25.Nov.99	14.Dec.00	276
99-1407B	Hanabishi	Flat Iron	Hanabishi	25.Nov.99	14.Dec.00	276
99-1407C	Hanabishi	Flat Iron	Hanabishi	25.Nov.99	14.Dec.00	276

Highlights indicate retest period.

**BPSTC APPLIANCE TEST REPORTS
1999**

99-1427	Focus Global	Rice Cooker	Oster	27.Nov.99	26.Jan.00	43
99-1537A	680 home	Rice Cooker	Durastar	13.Dec.99	14.Mar.00	67
99-1537B	680 home	Rice Cooker	Durastar	13.Dec.99	14.Mar.00	67
99-1541	chang Fa	Rice Cooker	Standard	14.Dec.99	4.Jan.00	16
99-1542	chang Fa	Rice Cooker	Standard	14.Dec.99	4.Jan.00	16
99-1543	chang Fa	Rice Cooker	Standard	14.Dec.99	4.Jan.00	16
99-1582	Chin Yi	Rice Cooker	Labelle	16.Dec.99	2.Feb.00	35
99-1584A	Wimpex	Flat Iron	Wimpex	16.Dec.99	13.Apr.00	86
99-1584B	Wimpex	Flat Iron	Wimpex	16.Dec.99	13.Apr.00	86
99-1597A	Focus Global	Flat Iron		20.Dec.99	12.Feb.00	40
99-1597B	Focus Global	Flat Iron		20.Dec.99	12.Feb.00	40
99-1621A	Pearl Works Sales	Flat Iron	Ichiban	21.Dec.99	20.Mar.00	65
99-1621B	Pearl Works Sales	Flat Iron	Ichiban	21.Dec.99	20.Mar.00	65
99-1621B	Pearl Works Sales	Flat Iron	Ichiban	21.Dec.99	20.Mar.00	65
99-1635A	GNL	Flat Iron	Jackpot	22.Dec.99	29.Mar.00	71
99-1635B	GNL	Flat Iron	New Natiolan	22.Dec.99	29.Mar.00	71
99-1635C	GNL	Rice Cooker	Astor	22.Dec.99	21.Mar.00	65
99-1635D	GNL	Rice Cooker	Nipol	22.Dec.99	21.Mar.00	65

PRODUCT	Number of Items
Flat Iron	72
Riced Cooker	29
Refrigerator	17
TOTAL	118

Highlights indicate retest period.

**BPSTC APPLIANCE TEST REPORTS
2000**

Sample Code	Company Name	Product	Brand	Date Received	Date Report issued	Processing Days
2000-0071A	Philips Electronics	Rice Cooker	Philips	12.Jan.00	25.Jan.00	13
2000-0071B	Philips Electronics	Rice Cooker	Philips	12.Jan.00	25.Jan.00	13
2000-0071C	Philips Electronics	Rice Cooker	Philips	12.Jan.00	25.Jan.00	13
2000-0071D	Philips Electronics	Rice Cooker	Philips	12.Jan.00	25.Jan.00	13
2000-0072	Tisdall Industrial	Flatiron	Standard	15.Jan.00	28.Mar.00	73
2000-0086	Asahi	Flatiron	Asahi	15.Jan.00	6.Mar.00	51
2000-0120A	Northern Island Co., Inc.	Rice Cooker	3D	27.Jan.00	29.Mar.00	62
2000-0120B	Northern Island Co., Inc.	Rice Cooker	3D	27.Jan.00	29.Mar.00	62
2000-0138	Mitsukoshi	Rice Cooker	Mitsukoshi	25.Jan.00	9.Mar.00	44
2000-0195A	Kitchen Beauty Marketing	Flatiron	Kyowa	25.Jan.00	31.Mar.00	66
2000-0195B	Kitchen Beauty Marketing	Flatiron	Kyowa	25.Jan.00	31.Mar.00	66
2000-0231	LG Collins	Refrigerator	LG	15.Feb.00	13.Apr.00	58
2000-0254A	matsushita Electric	Refrigerator	National	28.Mar.00	4.May.00	36
2000-0302A	Kitchen Beauty Marketing	Rice Cooker	Triangle	12.Feb.00	27.Mar.00	45
2000-0302B	Kitchen Beauty Marketing	Rice Cooker	Triangle	12.Feb.00	27.Mar.00	45
2000-0313A	Tower Industrial Sales	Refrigerator	SHARP	15.Feb.00	26.Apr.00	71
2000-0313B	Tower Industrial Sales	Refrigerator	SHARP	15.Feb.00	26.Apr.00	71
2000-0314	Tower Industrial Sales	Refrigerator	Sharp	16.Feb.00	2.May.00	76
2000-0335	Philips Electronics	Rice Cooker	Philips	20.Feb.00	3.Mar.00	13
2000-0339A	Union Industries	Flatiron	Union	18.Mar.00	13.Apr.00	25
2000-0339B	Union Industries	Flatiron	Union	18.Mar.00	13.Apr.00	25
2000-0365	Yuppies General Merch.	Rice Cooker	Matsuyama	24.Feb.00	24.Apr.00	60
2000-0389	Kitchen Beauty Marketing	Rice Cooker	none	1.Mar.00	4.Apr.00	33
2000-0416	Chin yi	Rice Cooker	none	24.Apr.00	9.May.00	15
2000-0417A	Hanabishi Phils.	Rice Cooker	Hanabishi	13.Apr.00	28.Apr.00	15
2000-0417B	Hanabishi Phils.	Rice Cooker	Hanabishi	13.Apr.00	28.Apr.00	15
2000-0418	Hanabishi Phils.	Rice Cooker	Hanabishi	13.Apr.00	19.Apr.00	6
2000-0457A	matsushita Electric	Flatiron	National	12.Mar.00	9.May.00	57
2000-0457B	matsushita Electric	Flatiron	National	12.Mar.00	9.May.00	57
2000-0457C	matsushita Electric	Flatiron	National	12.Mar.00	9.May.00	57
2000-0457D	matsushita Electric	Flatiron	National	12.Mar.00	9.May.00	57
2000-0457E	matsushita Electric	Flatiron	National	12.Mar.00	9.May.00	57
2000-0479A	Chang Fa	Rice Cooker	Standard	30.Mar.00	26.Apr.00	26
2000-0479B	Chang Fa	Rice Cooker	Standard	30.Mar.00	26.Apr.00	26
2000-0495	Vigor	Flatiron	Gloria	10.Apr.00	25.Apr.00	15
2000-0512	Marubishi	Flatiron	Marubishi	24.Mar.00	13.Apr.00	19
2000-0514	Focus Global	Rice Cooker	Oster	28.Mar.00	5.Apr.00	7
2000-0515A	Kinsonic	Flatiron	Sansio	17.Apr.00	26.May.00	39
2000-0515B	Kinsonic	Flatiron	Durastar	17.Apr.00	26.May.00	39
2000-0515C	Kinsonic	Flatiron	Legacy	17.Apr.00	26.May.00	39
2000-0515D	Kinsonic	Flatiron	Whirlpool	17.Apr.00	26.May.00	39
2000-0515E	Kinsonic	Flatiron	Star	17.Apr.00	26.May.00	39
2000-0515F	Kinsonic	Flatiron	Mitsuboshi	17.Apr.00	26.May.00	39
2000-0515G	Kinsonic	Flatiron	Fuji-ysu	17.Apr.00	26.May.00	39
2000-0515H	Kinsonic	Flatiron	Sun-Japan	17.Apr.00	26.May.00	39
2000-0524	matsushita Electric	Refrigerator	National	28.Mar.00	26.May.00	58
2000-0560A	matsushita Electric	Refrigerator	National	22.May.00	6.Jun.00	14
2000-0560B	matsushita Electric	Refrigerator	National	22.May.00	6.Jun.00	14
2000-0560C	matsushita Electric	Refrigerator	National	22.May.00	6.Jun.00	14
2000-0589	matsushita Electric	Refrigerator	National	25.Apr.00	12.May.00	17

 Highlights indicate retest period.

**BPSTC APPLIANCE TEST REPORTS
2000**

2000-0590	Kitchen Beauty Marketing	Rice Cooker	H & L	3.May.00	17.May.00	14
2000-0593A	Concepcion Industries	Refrigerator	Condura	10.Apr.00	17.Aug.00	127
2000-0593B	Concepcion Industries	Refrigerator	Condura	10.Apr.00	17.Aug.00	127
2000-0593C	Concepcion Industries	Refrigerator	Condura	10.Apr.00	17.Aug.00	127
2000-0593D	Concepcion Industries	Refrigerator	Condura	10.Apr.00	17.Aug.00	127
2000-0599A	Chin yi	Flatiron	Mitsuboshi	11.Apr.00	3.May.00	22
2000-0599B	Chin yi	Flatiron	Asahi	11.Apr.00	3.May.00	22
2000-0599C	Chin yi	Flatiron	Klestar	11.Apr.00	3.May.00	22
2000-0599D	Chin yi	Flatiron	Sun-Japan	11.Apr.00	3.May.00	22
2000-0599E	Chin yi	Flatiron	Sweet Home	11.Apr.00	3.May.00	22
2000-0605A	matsushita Electric	Refrigerator	National	26.Apr.00	12.May.00	16
2000-0605B	matsushita Electric	Refrigerator	National	26.Apr.00	12.May.00	16
2000-0665	Union Industries	Rice Cooker	Oclar	22.May.00	18.Jul.00	56
2000-0669A	matsushita Electric	Rice Cooker	National	8.May.00	26.Jun.00	48
2000-0669B	matsushita Electric	Rice Cooker	National	8.May.00	26.Jun.00	48
2000-0669C	matsushita Electric	Rice Cooker	National	8.May.00	26.Jun.00	48
2000-0669D	matsushita Electric	Rice Cooker	National	8.May.00	26.Jun.00	48
2000-0669E	matsushita Electric	Rice Cooker	National	8.May.00	26.Jun.00	48
2000-0670	matsushita Electric	Refrigerator	National	11.May.00	26.May.00	15
2000--0671	Chin yi	Flatiron	Mikimoto	26.Apr.00	3.May.00	7
2000--0684A	Kitchen Beauty Marketing	Flatiron	Kyowa	8.May.00	21.Jun.00	43
2000--0684B	Kitchen Beauty Marketing	Flatiron	Kyowa	8.May.00	21.Jun.00	43
2000--0684C	Kitchen Beauty Marketing	Flatiron	Kyowa	8.May.00	21.Jun.00	43
2000-0691	Mitsukoshi	Flatiron	Mitsukoshi	8.May.00	8.Jun.00	30
2000-0706A	Chin yi	Rice Cooker	Labelle	23.May.00	8.Jun.00	15
2000-0706B	Chin yi	Rice Cooker	Labelle	23.May.00	8.Jun.00	15
2000-0706C	Chin yi	Rice Cooker	Labelle	23.May.00	8.Jun.00	15
2000-0710A	Chin yi	Flatiron	Sweet Home	9.May.00	19.May.00	10
2000-0710B	Chin yi	Flatiron	Sun-Japan	9.May.00	19.May.00	10
2000-0710C	Chin yi	Flatiron	Mikimoto	9.May.00	19.May.00	10
2000-0710D	Chin yi	Flatiron	Mitsuboshi	9.May.00	19.May.00	10
2000-0710E	Chin yi	Flatiron	Klestar	9.May.00	19.May.00	10
2000-0710F	Chin yi	Flatiron	none	9.May.00	19.May.00	10
2000-0765A	Chin yi	Flatiron	Asahi	18.May.00	2.Jun.00	14
2000-0765B	Chin yi	Flatiron	Klestar	18.May.00	2.Jun.00	14
2000-0765C	Chin yi	Flatiron	Mitsuboshi	18.May.00	2.Jun.00	14
2000-0765D	Chin yi	Flatiron	Sun-Japan	18.May.00	2.Jun.00	14
2000-0765E	Chin yi	Flatiron	Sweet Home	18.May.00	2.Jun.00	14
2000-0765F	Chin yi	Flatiron	Tecnogas	18.May.00	2.Jun.00	14
2000-0779A	Concepcion Industries	Refrigerator	Kelvinator	21.Jun.00	16.Aug.00	55
2000-0779B	Concepcion Industries	Refrigerator	Kelvinator	21.Jun.00	16.Aug.00	55
2000-0779C	Concepcion Industries	Refrigerator	Kelvinator	21.Jun.00	16.Aug.00	55
2000-0801	Vigor	Flatiron	Gloria	25.May.00	2.Jun.00	7
2000-0847A	Phil. Appliance Corp.	Refrigerator	GE	15.Jun.00	4.Aug.00	49
2000-0847B	Phil. Appliance Corp.	Refrigerator	GE	15.Jun.00	4.Aug.00	49
2000-0851	Union Industries	Flatiron	UNION	26.Jun.00	21.Jul.00	25
2000-0854A	Hanabishi Phils.	Rice Cooker	HANABISHI	8.Jun.00	25.Jul.00	47
2000-0854B	Hanabishi Phils.	Rice Cooker	HANABISHI	8.Jun.00	25.Jul.00	47
2000-0945	Vigor	Flatiron	Dynamex	10.Jul.00	8.Aug.00	28
2000-0957A	Philips Electronics	Rice Cooker	PHILIPS	16.Jun.00	30.Jun.00	14
2000-0957B	Philips Electronics	Rice Cooker	PHILIPS	16.Jun.00	30.Jun.00	14
2000-0957C	Philips Electronics	Rice Cooker	PHILIPS	16.Jun.00	30.Jun.00	14
2000-0957D	Philips Electronics	Rice Cooker	PHILIPS	16.Jun.00	30.Jun.00	14

Highlights indicate retest period.

**BPSTC APPLIANCE TEST REPORTS
2000**

2000-0958	Philips Electronics	Rice Cooker	PHILIPS	16.Jun.00	30.Jun.00	14
2000-0968	Evergood Unlimited	Flatiron	IMARFLEX	14.Jul.00	26.Jul.00	12
2000-0973	Technogas	Flatiron	TECNOGAS	21.Jun.00	29.Jun.00	8
2000-0980A	Chin yi	Flatiron	American Herita	10.Jul.00	25.Jul.00	15
2000-0980B	Chin yi	Flatiron	American Herita	10.Jul.00	25.Jul.00	15
2000-0980C	Chin yi	Flatiron	American Herita	10.Jul.00	25.Jul.00	15
2000-1010A	Sharp (Phils.) Corp.	Rice Cooker	SHARP	13.Jul.00	22.Aug.00	39
2000-1010B	Sharp (Phils.) Corp.	Rice Cooker	SHARP	13.Jul.00	22.Aug.00	39
2000-1010C	Sharp (Phils.) Corp.	Rice Cooker	SHARP	13.Jul.00	22.Aug.00	39
2000-1011	Sharp (Phils.) Corp.	Rice Cooker	SHARP	13.Jul.00	21.Aug.00	38
2000-1018A	GNL	Flatiron	JACPOT	11.Jul.00	14.Jul.00	3
2000-1018B	GNL	Flatiron	JACPOT	11.Jul.00	14.Jul.00	3
2000-1020A	Marubishi	Flatiron	MARUBISHI	30.Jun.00	14.Jul.00	14
2000-1020B	Marubishi	Flatiron	MARUBISHI	30.Jun.00	14.Jul.00	14
2000-1021A	Marubishi	Rice Cooker	MARUBISHI	11.Jul.00	1.Aug.00	20
2000-1021B	Marubishi	Rice Cooker	MAGIC STAR	11.Jul.00	1.Aug.00	20
2000-1038A	Philips Electronics	Flatiron	PHILIPS	30.Jun.00	7.Jul.00	7
2000-1038B	Philips Electronics	Flatiron	PHILIPS	30.Jun.00	7.Jul.00	7
2000-1038C	Philips Electronics	Flatiron	PHILIPS	30.Jun.00	7.Jul.00	7
2000-1038D	Philips Electronics	Flatiron	PHILIPS	30.Jun.00	7.Jul.00	7
2000-1038E	Philips Electronics	Flatiron	PHILIPS	30.Jun.00	7.Jul.00	7
2000-1038F	Philips Electronics	Flatiron	PHILIPS	30.Jun.00	7.Jul.00	7
2000-1050	Union Industries	Rice Cooker	UNION	26.Jul.00	9.Aug.00	13
2000-1072A	GT Pacific	Rice Cooker	STANDARD	17.Jul.00	1.Aug.00	14
2000-1072B	GT Pacific	Rice Cooker	STANDARD	17.Jul.00	1.Aug.00	14
2000-1078		Flatiron	MITSUKOSHI	17.Jul.00	1.Aug.00	14
2000-1079	Kolin Phils.	Flatiron	Kolin	17.Jul.00	1.Aug.00	14
2000-1128A	680 Home Appliances	Rice Cooker	DURASTAR	7.Aug.00	22.Aug.00	15
2000-1128B	680 Home Appliances	Rice Cooker	DURASTAR	7.Aug.00	22.Aug.00	15
2000-1128C	680 Home Appliances	Rice Cooker	DURASTAR	7.Aug.00	22.Aug.00	15
2000-1128D	680 Home Appliances	Rice Cooker	DURASTAR	7.Aug.00	22.Aug.00	15
2000-1128E	680 Home Appliances	Rice Cooker	DURASTAR	7.Aug.00	22.Aug.00	15
2000-1128F	680 Home Appliances	Rice Cooker	DURASTAR	7.Aug.00	22.Aug.00	15
2000-1136	Northern Island Co., Inc.	Flatiron	3D	3.Aug.00	7.Aug.00	4
2000-1143	Union Industries	Flatiron	UNION	3.Aug.00	7.Aug.00	4
2000-1145A	El Neuchi	Rice Cooker	MITSUKOSHI	7.Aug.00	17.Aug.00	10
2000-1145B	El Neuchi	Rice Cooker	NEUCHI	7.Aug.00	17.Aug.00	10
2000-1145C	El Neuchi	Rice Cooker		7.Aug.00	17.Aug.00	10
2000-1150		Flatiron	Labelle	7.Aug.00	17.Aug.00	10
2000-1163	Focus Global	Rice Cooker	OSTER	20.Jul.00	21.Jul.00	1
2000-1169A	LG Collins	Refrigerator	Refrigerator	23.Aug.00	28.Aug.00	5
2000-1169B	LG Collins	Refrigerator	Refrigerator	23.Aug.00	28.Aug.00	5
2000-1177	Union Industries	Flatiron	UNION	25.Jul.00	27.Jul.00	2
2000-1200 A	Pemori Import & Export	Flatiron	ICHIBAN	24.Jul.00	7.Aug.00	13
2000-1200 B	Pemori Import & Export	Flatiron	ICHIBAN	24.Jul.00	7.Aug.00	13
2000-1221A	Tisdall Industrial	Flatiron	STANDARD	29.Jul.00	7.Aug.00	8
2000-1221B	Tisdall Industrial	Flatiron	STANDARD	29.Jul.00	7.Aug.00	8
2000-1223A	Concepcion Industries	Refrigerator	Condura	6.Oct.00	14.Oct.00	8
2000-1223B	Concepcion Industries	Refrigerator	Condura	6.Oct.00	14.Oct.00	8
2000-1223C	Concepcion Industries	Refrigerator	Condura	6.Oct.00	14.Oct.00	8
2000-1229A	Focus Global	Flatiron	OSTER	6.Oct.00	14.Oct.00	8
2000-1229B	Focus Global	Flatiron	OSTER	6.Oct.00	14.Oct.00	8
2000-1241A	3D INDUSTRIES, INC.	Rice Cooker	3D	29.Jul.00	25.Aug.00	26

Highlights indicate retest period.

**BPSTC APPLIANCE TEST REPORTS
2000**

2000-1241B	3D INDUSTRIES, INC.	Rice Cooker	3D	29.Jul.00	25.Aug.00	26
2000-1241C	3D INDUSTRIES, INC.	Rice Cooker	3D	29.Jul.00	25.Aug.00	26
2000-1242	3D INDUSTRIES, INC.	Flatiron	3D	11.Aug.00	1.Sep.00	20
2000-1249	Union Industries	Flatiron	UNION	10.Aug.00	11.Aug.00	1
2000-1253A	Tower Industrial Sales	Refrigerator	SHARP	10.Aug.00	18.Sep.00	38
2000-1253B	Tower Industrial Sales	Refrigerator	SHARP	10.Aug.00	18.Sep.00	38
2000-1254A	Luxor Ventures, Inc.	Rice Cooker	MARUBISHI	11.Aug.00	12.Sep.00	31
2000-1254B	Luxor Ventures, Inc.	Rice Cooker	MARUBISHI	11.Aug.00	12.Sep.00	31
2000-1298	Chin yi	Rice Cooker	SWEET HOME	10.Aug.00	23.Aug.00	13
2000-1339 A	HOA Ind. Hardware & Co.	Rice Cooker	FUJIYAMA	23.Aug.00	7.Sep.00	14
2000-1339 B	HOA Ind. Hardware & Co.	Rice Cooker	DYNAFLEX	23.Aug.00	7.Sep.00	14
2000-1339 C	HOA Ind. Hardware & Co.	Rice Cooker	DYNAFLEX	23.Aug.00	7.Sep.00	14
2000-1344	KLG International, Inc.	Rice Cooker	CUCKOO	18.Aug.00	8.Sep.00	20
2000-1345	KLG International, Inc.	Rice Cooker	GLORIA	15.Aug.00	13.Sep.00	28
2000-1348	Pemori Import & Export	Flatiron	ICHIBAN	21.Aug.00	22.Aug.00	1
2000-1355	Phil. Appliance Corp.	Refrigerator	GE	29.Aug.00	21.Sep.00	22
2000-1364 A	SAMSUN Electronic	Refrigerator	SAMSUNG	28.Aug.00	2.Oct.00	34
2000-1364 B	SAMSUN Electronic	Refrigerator	SAMSUNG	28.Aug.00	2.Oct.00	34
2000-1375	Kitchen Beauty Marketing	Flatiron	KYOWA	4.Sep.00	12.Sep.00	8
2000-1376	Kitchen Beauty Marketing	Rice Cooker	GLOBAL	23.Aug.00	30.Sep.00	37
2000-1394 A	Collins International	Rice Cooker	DOWELL	4.Sep.00	27.Sep.00	23
2000-1394 B	Collins International	Rice Cooker	DOWELL	4.Sep.00	27.Sep.00	23
2000-1423		Rice Cooker	Labelle	4.Sep.00	27.Sep.00	23
2000-1423	TW and Company	Rice Cooker	Labelle	9.Sep.00	20.Sep.00	11
2000-1478 A	Camel Appliances	Flatiron	CAMEL	20.Sep.00	2.Oct.00	12
2000-1478 B	Camel Appliances	Flatiron	CAMEL	20.Sep.00	2.Oct.00	12
2000-1479 A	Camel Appliances	Rice Cooker	CAMEL	30.Sep.00	17.Oct.00	17
2000-1479 B	Camel Appliances	Rice Cooker	CAMEL	30.Sep.00	17.Oct.00	17
2000-1479 C	Camel Appliances	Rice Cooker	CAMEL	30.Sep.00	17.Oct.00	17
2000-1479 D	Camel Appliances	Rice Cooker	CAMEL	30.Sep.00	17.Oct.00	17
2000-1497 A	Marubishi	Rice Cooker	MARUBISHI	13.Sep.00	19.Sep.00	6
2000-1497 B	Marubishi	Rice Cooker	MARUBISHI	13.Sep.00	19.Sep.00	6
2000-1499 A	3D INDUSTRIES, INC.	Rice Cooker	3D	12.Sep.00	17.Sep.00	5
2000-1499 B	3D INDUSTRIES, INC.	Rice Cooker	3D	12.Sep.00	17.Sep.00	5
2000-1499 C	3D INDUSTRIES, INC.	Rice Cooker	3D	12.Sep.00	17.Sep.00	5
2000-1499 D	3D INDUSTRIES, INC.	Rice Cooker	3D	12.Sep.00	17.Sep.00	5
2000-1500 A	3D INDUSTRIES, INC.	Rice Cooker	3D	14.Sep.00	27.Sep.00	13
2000-1500 B	3D INDUSTRIES, INC.	Rice Cooker	3D	14.Sep.00	27.Sep.00	13
2000-1501 A	3D INDUSTRIES, INC.	Rice Cooker	3D	15.Sep.00	21.Sep.00	6
2000-1501 B	3D INDUSTRIES, INC.	Rice Cooker	3D	15.Sep.00	21.Sep.00	6
2000-1501 C	3D INDUSTRIES, INC.	Rice Cooker	3D	15.Sep.00	21.Sep.00	6
2000-1503	GT Pacific	Rice Cooker	MIKIMOTO	18.Sep.00	26.Sep.00	8
2000-1504	GT Pacific	Rice Cooker	STANDARD	14.Sep.00	22.Sep.00	8
2000-1520A	680 Home Appliances	Rice Cooker	DURASTAR	6.Oct.00	16.Oct.00	10
2000-1520B	680 Home Appliances	Rice Cooker	DURASTAR	6.Oct.00	16.Oct.00	10
2000-1520C	680 Home Appliances	Rice Cooker	DURASTAR	6.Oct.00	16.Oct.00	10
2000-1600	3D INDUSTRIES, INC.	Flatiron	3D	28.Sep.00	2.Oct.00	4
2000-1616 A	Philips Electronics	Flatiron	PHILIPS	27.Sep.00	5.Oct.00	8
2000-1616 B	Philips Electronics	Flatiron	PHILIPS	27.Sep.00	5.Oct.00	8
2000-1616 C	Philips Electronics	Flatiron	PHILIPS	27.Sep.00	5.Oct.00	8
2000-1616 D	Philips Electronics	Flatiron	PHILIPS	27.Sep.00	5.Oct.00	8
2000-1616 E	Philips Electronics	Flatiron	PHILIPS	27.Sep.00	5.Oct.00	8
2000-1616 F	Philips Electronics	Flatiron	PHILIPS	27.Sep.00	5.Oct.00	8

Highlights indicate retest period.

**BPSTC APPLIANCE TEST REPORTS
2000**

2000-1640A	680 Home Appliances	Rice Cooker	DURASTAR	3.Oct.00	28.Oct.00	25
2000-1640A	680 Home Appliances	Rice Cooker	DURASTAR	3.Oct.00	28.Oct.00	25
2000-1641	680 Home Appliances	Flatiron	DURASTAR	1.Oct.00	8.Oct.00	7
2000-1642	680 Home Appliances	Flatiron	DURASTAR	27.Oct.00	8.Dec.00	41
2000-1643 A	680 Home Appliances	Flatiron	DURASTAR	27.Oct.00	8.Dec.00	41
2000-1643 B	680 Home Appliances	Flatiron	DURASTAR	27.Oct.00	8.Dec.00	41
2000-1645 A	HOA Ind. Hardware & Co.	Rice Cooker	DYNAFLEX	3.Oct.00	4.Oct.00	1
2000-1645 B	HOA Ind. Hardware & Co.	Rice Cooker	FUJIYAMA	3.Oct.00	4.Oct.00	1
2000-1652	Hanabishi Phils.	Air Pot	HANABISHI	18.Oct.00	17.Nov.00	29
2000-1654 A	Pemori Import & Export	Rice Cooker	ICHIBAN	6.Oct.00	27.Oct.00	21
2000-1654 B	Pemori Import & Export	Rice Cooker	ICHIBAN	6.Oct.00	27.Oct.00	21
2000-1655 A	Philips Electronics	Rice Cooker	PHILIPS	3.Oct.00	20.Nov.00	47
2000-1655 B	Philips Electronics	Rice Cooker	PHILIPS	3.Oct.00	20.Nov.00	47
2000-1655 C	Philips Electronics	Rice Cooker	PHILIPS	3.Oct.00	20.Nov.00	47
2000-1655 D	Philips Electronics	Rice Cooker	PHILIPS	3.Oct.00	20.Nov.00	47
2000-1655 E	Philips Electronics	Rice Cooker	PHILIPS	3.Oct.00	20.Nov.00	47
2000-1655 F	Philips Electronics	Rice Cooker	PHILIPS	3.Oct.00	20.Nov.00	47
2000-1664 A	SAMSUN Electronic	Refrigerator	SAMSUNG	22.Nov.00	29.Nov.00	7
2000-1664 B	SAMSUN Electronic	Refrigerator	SAMSUNG	22.Nov.00	29.Nov.00	7
2000-1670	SANYO Phils., Incorp.	Refrigerator	SANYO	6.Oct.00	3.Nov.00	27
2000-1672	LG Collins	Refrigerator	LG	25.Oct.00	16.Nov.00	21
2000-1678 A	Luxor Ventures, Inc.	Rice Cooker	MARUBISHI	11.Oct.00	24.Oct.00	13
2000-1678 B	Luxor Ventures, Inc.	Rice Cooker	MARUBISHI	11.Oct.00	24.Oct.00	13
2000-1688	BEQUILLO Marketing	Flatiron	TOKINA	13.Oct.00	20.Oct.00	7
2000-1691 A	LG Collins	Refrigerator	LG	19.Oct.00	26.Oct.00	7
2000-1691 B	LG Collins	Refrigerator	LG	19.Oct.00	26.Oct.00	7
2000-1723	Tower Industrial Sales	Refrigerator	SHARP	19.Oct.00	20.Oct.00	1
2000-1724A	Tower Industrial Sales	Refrigerator	SHARP	17.Oct.00	28.Dec.00	71
2000-1724B	Tower Industrial Sales	Refrigerator	SHARP	17.Oct.00	28.Dec.00	71
2000-1734	3D INDUSTRIES, INC.	Rice Cooker	3D	30.Oct.00	19.Dec.00	49
2000-1736 A	Camel Appliances	Flatiron	CAMEL	20.Oct.00	25.Oct.00	5
2000-1736 B	Camel Appliances	Flatiron	CAMEL	20.Oct.00	25.Oct.00	5
2000-1761	Bhagis Int. Trading Corp.	Rice Cooker	American Herita	23.Oct.00	26.Oct.00	3
2000-1772	Kitchen Beauty Marketing	Rice Cooker	KYOWA	24.Oct.00	30.Oct.00	6
2000-1773	Kitchen Beauty Marketing	Rice Cooker	KYOWA	27.Oct.00	8.Nov.00	11
2000-1801	GT Pacific	Rice Cooker	MIKIMOTO	6.Nov.00	13.Nov.00	7
2000-1828	TW and Company	Rice Cooker	Labelle	6.Dec.00	28.Jan.01	52
2000-1830 A	Matsushita Electric	Flatiron	National	13.Nov.00	21.Nov.00	8
2000-1830 B	Matsushita Electric	Flatiron	National	13.Nov.00	21.Nov.00	8
2000-1855A	Sharp (Phils.) Corp.	Refrigerator	SHARP	15.Dec.00	16.Jan.01	31
2000-1855B	Sharp (Phils.) Corp.	Refrigerator	SHARP	15.Dec.00	16.Jan.01	31
2000-1871	KLG International, Inc.	Rice Cooker	GLORIA	24.Nov.00	7.Dec.00	13
2000-1872	KLG International, Inc.	Rice Cooker	CUCKOO	24.Nov.00	6.Dec.00	12
2000-1874	HOA Ind. Hardware & Co.	Rice Cooker	SANSIO	15.Nov.00	21.Nov.00	6
2000-1875	HOA Ind. Hardware & Co.	Flatiron	FUJIYAMA	15.Nov.00	21.Nov.00	6
2000-1881A	680 Home Appliances	Rice Cooker	DURASTAR	5.Dec.00	28.Jan.01	53
2000-1881B	680 Home Appliances	Rice Cooker	DURASTAR	5.Dec.00	28.Jan.01	53
2000-1895 A	Collins International	Rice Cooker	DOWELL	22.Nov.00	27.Nov.00	5
2000-1895 A	Collins International	Rice Cooker	DOWELL	22.Nov.00	27.Nov.00	5
2000-1896	Collins International	Coffee Maker	Moulinex	12.Dec.00	12.Jan.01	30
2000-1897	Collins International	Cordless Kettle	Aqualia	2.Jan.01	1.Feb.01	29
2000-1898	Collins International	Sandwich Toaste	Moulinex	6.Dec.00	28.Dec.00	22
2000-1899	3D INDUSTRIES, INC.	Rice Cooker	3D	12.Dec.00	20.Dec.00	8

Highlights indicate retest period.

**BPSTC APPLIANCE TEST REPORTS
2000**

2000-1900	3D INDUSTRIES, INC.	Refrigerator	3D	28.Nov.00	14.Dec.00	16
2000-1913	Union Industries	Refrigerator	Union	5.Dec.00	15.Dec.00	10
2000-1952 A	Luxor Ventures, Inc.	Rice Cooker	MARUBISHI	29.Nov.00	30.Nov.00	1
2000-1952 B	Luxor Ventures, Inc.	Rice Cooker	MARUBISHI	29.Nov.00	30.Nov.00	1
2000-1955 A	Camel Appliances	Rice Cooker	CAMEL	20.Dec.00	26.Dec.00	6
2000-1955 B	Camel Appliances	Rice Cooker	CAMEL	20.Dec.00	26.Dec.00	6
2000-1955 C	Camel Appliances	Rice Cooker	CAMEL	20.Dec.00	26.Dec.00	6
2000-1964 A	Pemori Import & Export	Rice Cooker	ICHIBAN	5.Dec.00	11.Dec.00	6
2000-1964 B	Pemori Import & Export	Rice Cooker	ICHIBAN	5.Dec.00	11.Dec.00	6
2000-1964 C	Pemori Import & Export	Rice Cooker	ICHIBAN	5.Dec.00	11.Dec.00	6
2000-1964 D	Pemori Import & Export	Rice Cooker	ICHIBAN	5.Dec.00	11.Dec.00	6
2000-1964 E	Pemori Import & Export	Rice Cooker	ICHIBAN	5.Dec.00	11.Dec.00	6
2000-2003	GT Pacific	Rice Cooker	Micromatic	8.Jan.01	23.Jan.01	15
2000-2007	Sharp (Phils.) Corp.	Refrigerator	SHARP	15.Dec.00	4.Jan.01	19
2000-2013	GT Pacific	Rice Cooker	STANDARD	11.Jan.01	7.Feb.01	26
2000-2027	Nova Commodities	Rice Cooker	Kansai	24.Dec.00	14.Feb.01	50
2000-2029A	Exodus Trading	Rice Cooker	Magic Star	15.Jan.01	14.Feb.01	29
2000-2029B	Exodus Trading	Rice Cooker	Magic Star	15.Jan.01	14.Feb.01	29
2000-2036	Maclin	Rice Cooker	Promac	15.Jan.01	13.Feb.01	28
2000-2054A	Collins International	Flatiron	DOWELL	11.Jan.01	22.Jan.01	11
2000-2054B	Collins International	Flatiron	DOWELL	11.Jan.01	22.Jan.01	11
2000-2056A	Collins International	Rice Cooker	Crown	15.Jan.01	13.Feb.01	28
2000-2056B	Collins International	Rice Cooker	Crown	15.Jan.01	13.Feb.01	28
2000-665A	Union Industries	Rice Cooker	Union	22.May.00	18.Jul.00	56
2000-792A	Chang Fa	Rice Cooker	Standard	31.May.00	2.Jun.00	2
2000-792B	Chang Fa	Rice Cooker	Standard	31.May.00	2.Jun.00	2

Flatiron	98
Rice Cooker	140
Refrigerator	46
Coffee Maker	1
Air Pot	1
Sandwich Toaster	1
Cordless Kettle	1
TOTAL	288

 Highlights indicate retest period.

**BPSTC APPLIANCE TEST REPORTS
2001**

Sample Code	Company Name	Product	Brand	Date Received	Date Report Issued	No of Processing Days
2001-0001	Kinsonic Philippines	Rice Cooker	NEC	2.Jan.01	19.Jan.01	14
2001-0008	GT Pacific	Rice Cooker	Standard	4.Jan.01	5.Feb.01	23
2001-0042	LG Collins	Refrigerator	LG	12.Jan.01	16.Feb.01	26
2001-0043	New Way International	Rice Cooker	Micromatic	12.Jan.01	6.Feb.01	18
2001-0073	Kitchen Beauty Mktg.	Rice Cooker	Kyowa	23.Jan.01	2.Feb.01	9
2001-0079A	Nova Commodities	Flatiron		25.Jan.01	26.Feb.01	23
2001-0079B	Nova Commodities	Flatiron		25.Jan.01	26.Feb.01	23
2001-0091A	Collins International	Rice Cooker	Dowell	26.Jan.01	7.Feb.01	9
2001-0091B	Collins International	Rice Cooker	Dowell	26.Jan.01	7.Feb.01	9
2001-0093	Collins International	Rice Cooker	Crown	26.Jan.01	21.Feb.01	19
2001-0103	Sekaitech	Rice Cooker	Imarflex	31.Jan.01	14.Feb.01	11
2001-0104	Evergood	Rice Cooker	Imarflex	31.Jan.01	14.Feb.01	11
2001-0110A	Camville Manufacturing	Rice Cooker	Standard	5.Feb.01	16.Feb.01	10
2001-0110B	Camville Manufacturing	Rice Cooker	Standard	5.Feb.01	16.Feb.01	10
2001-0123A	Suburban Enterprise	Oven Toaster	Ultima	6.Feb.01	1.Mar.01	18
2001-0123B	Suburban Enterprise	Air pot	Ultima	6.Feb.01	1.Mar.01	18
2001-0123C	Suburban Enterprise	Air pot	Taimaru	6.Feb.01	1.Mar.01	18
2001-0131	Kinsonic Philippines	Rice Cooker	NEC	7.Feb.01	16.Feb.01	8
2001-0138	Vigor Mfg.	Flatiron	Aroma	9.Feb.01	30.Mar.01	36
2001-0140A	Mitsukoshi	Flatiron	Mitsukoshi	9.Feb.01	4.Apr.01	39
2001-0140B	Mitsukoshi	Flatiron	Mitsukoshi	9.Feb.01	4.Apr.01	39
2001-0141	Mitsukoshi	Flatiron	Mitsukoshi	9.Feb.01	30.Mar.01	36
2001-0142A	Tisdall Industrial Corp.	Flatiron	Standard	12.Feb.01	17.Feb.01	5
2001-0142B	Tisdall Industrial Corp.	Flatiron	Standard	12.Feb.01	17.Feb.01	5
2001-0160	3D Industries	Rice Cooker	3D	15.Feb.01	19.Feb.01	3
2001-0165	Asian Durables	Refrigerator	Daewoo	15.Feb.01	28.Feb.01	10
2001-0182	GT Pacific	Rice Cooker	Micromatic	20.Feb.01	28.Feb.01	7
2001-0183	GT Pacific	Rice Cooker	Standard	20.Feb.01	1.Mar.01	8
2001-0184	New Way International	Rice Cooker	Micromatic	20.Feb.01	2.Mar.01	9
2001-0204	Tisdall Industrial Corp.	Flatiron	Standard	22.Feb.01	28.Feb.01	5
2001-0216	Matsushita Electric	Rice Cooker	National	27.Feb.01	8.Mar.01	8
2001-0236	Union Industries	Refrigerator	Union	1.Mar.01	12.Mar.01	8
2001-0241A	Camel Appliances	Rice Cooker	Camel	2.Mar.01	15.Mar.01	10
2001-0241B	Camel Appliances	Rice Cooker	Camel	2.Mar.01	15.Mar.01	10
2001-0242	Camel Appliances	Flatiron	Camel	2.Mar.01	12.Mar.01	7
2001-0282	Sharp Philippines	Refrigerator	Sharp	9.Mar.01	4.Apr.01	19
2001-0301	Nova Commodities	Rice Cooker	Kansai	14.Mar.01	3.Apr.01	15
2001-0309A	Asian Durables	Refrigerator	GE	15.Mar.01	6.Apr.01	17
2001-0309B	Asian Durables	Refrigerator	GE	15.Mar.01	6.Apr.01	17
2001-0318	Collins International	Flatiron	Moulinex	19.Mar.01	3.Apr.01	12
2001-0326	GT Pacific	Rice Cooker	Micromatic	19.Mar.01	6.Apr.01	15
2001-0327A	Concepcion Industries	Refrigerator	Kelvinator	20.Mar.01	20.Apr.01	24
2001-0327B	Concepcion Industries	Refrigerator	Condura	20.Mar.01	20.Apr.01	24
2001-0330A	LG Collins	Refrigerator	LG	20.Mar.01	30.Apr.01	30
2001-0330B	LG Collins	Refrigerator	LG	20.Mar.01	30.Apr.01	30
2001-0331	680 Home Appliances	Rice Cooker	Durastar	21.Mar.01	6.Apr.01	13
2001-0348A	Nova Commodities	Flatiron	Kansai	26.Mar.01	2.Apr.01	6
2001-0348B	Nova Commodities	Flatiron	Kansai	26.Mar.01	2.Apr.01	6
2001-0355A	Sharp Philippines	Rice Cooker	Sharp	27.Mar.01	25.Apr.01	22
2001-0355B	Sharp Philippines	Rice Cooker	Sharp	27.Mar.01	25.Apr.01	22
2001-0355C	Sharp Philippines	Rice Cooker	Sharp	27.Mar.01	25.Apr.01	22
2001-0358A	Collins International	Air pot	Crown	27.Mar.01	31.May.01	48

Highlights indicate retest period.

**BPSTC APPLIANCE TEST REPORTS
2001**

2001-0358B	Collins International	Air pot	Crown	27.Mar.01	31.May.01	48
2001-0364A	Sekaitech	Air pot	Imarflex	28.Mar.01	13.Jun.01	56
2001-0364B	Sekaitech	Air pot	Imarflex	28.Mar.01	22.May.01	40
2001-0364C	Sekaitech	Air pot	Imarflex	28.Mar.01	22.May.01	40
2001-0382	Tucay enterprises	Flatiron	Fuji	2.Apr.01	27.Apr.01	20
2001-0390A	Kitchen Beauty Mktg.	Flatiron	Kyowa	3.Apr.01	19.Apr.01	13
2001-0390B	Kitchen Beauty Mktg.	Flatiron	Kyowa	3.Apr.01	19.Apr.01	13
2001-0391	First Gem Philippines	Refrigerator	White Westingho	3.Apr.01	22.May.01	36
2001-0440	Nova Commodities	Rice Cooker	Kansai	18.Apr.01	25.Apr.01	6
2001-0441	Suburban Enterprise	Rice Cooker	Daimaru	18.Apr.01	5.Jun.01	35
2001-0442	Suburban Enterprise	Rice Cooker	Ultima	18.Apr.01	15.May.01	20
2001-0452	Focus Global Mfg.	Flatiron	Oster	20.Apr.01	4.May.01	11
2001-0462A	680 Home Appliances	Rice Cooker	Durastar	23.Apr.01	10.May.01	14
2001-0462B	680 Home Appliances	Rice Cooker	Durastar	23.Apr.01	10.May.01	14
2001-0462C	680 Home Appliances	Rice Cooker	Durastar	23.Apr.01	10.May.01	14
2001-0463A	680 Home Appliances	Rice Cooker	Durastar	3.Apr.01	10.May.01	28
2001-0463B	680 Home Appliances	Rice Cooker	Durastar	3.Apr.01	10.May.01	28
2001-0481A	Philips	Rice Cooker	Philips	26.Apr.01	31.May.01	26
2001-0481B	Philips	Rice Cooker	Philips	26.Apr.01	31.May.01	26
2001-0481C	Philips	Rice Cooker	Philips	26.Apr.01	31.May.01	26
2001-0482A	Philips	Rice Cooker	Philips	26.Apr.01	18.May.01	17
2001-0482B	Philips	Rice Cooker	Philips	26.Apr.01	18.May.01	17
2001-0482C	Philips	Rice Cooker	Philips	26.Apr.01	18.May.01	17
2001-0484	Evergood	Rice Cooker	Imarflex	27.Apr.01	15.May.01	13
2001-0485	Sekaitech	Rice Cooker	Imarflex	27.Apr.01	15.May.01	13
2001-0491A	Camville Manufacturing	Rice Cooker	Standard	30.Apr.01	16.May.01	13
2001-0491B	Camville Manufacturing	Rice Cooker	Standard	30.Apr.01	16.May.01	13
2001-0511E	Continental Sales	Rice Cooker	Midea	4.May.01	13.Jun.01	29
2001-0511F	Continental Sales	Rice Cooker	Midea	4.May.01	13.Jun.01	29
2001-0543	Kitchen Beauty Mktg.	Rice Cooker	Kyowa	10.May.01	3.Jun.01	17
2001-0550	GT Pacific	Rice Cooker		11.May.01	31.May.01	15
2001-0559A	Matsushita Electric	Refrigerator	Singer	16.May.01	6.Jul.01	38
2001-0559B	Matsushita Electric	Refrigerator	Singer	16.May.01	6.Jul.01	38
2001-0559C	Matsushita Electric	Refrigerator	Singer	16.May.01	6.Jul.01	38
2001-0559D	Matsushita Electric	Refrigerator	Singer	16.May.01	6.Jul.01	38
2001-0560A	Matsushita Electric	Refrigerator	National	16.May.01	6.Jul.01	38
2001-0560B	Matsushita Electric	Refrigerator	National	16.May.01	6.Jul.01	38
2001-0561A	Matsushita Electric	Refrigerator	Singer	16.May.01	6.Jul.01	38
2001-0561B	Matsushita Electric	Refrigerator	Singer	16.May.01	6.Jul.01	38
2001-0575A	LG Collins	Refrigerator	LG	18.May.01	25.May.01	6
2001-0575B	LG Collins	Refrigerator	LG	18.May.01	25.May.01	6
2001-0583A	Matsushita Electric	Rice Cooker	National	21.May.01	4.Jun.01	11
2001-0583b	Matsushita Electric	Rice Cooker	National	21.May.01	4.Jun.01	11
2001-0583c	Matsushita Electric	Rice Cooker	National	21.May.01	4.Jun.01	11
2001-0583d	Matsushita Electric	Rice Cooker	National	21.May.01	4.Jun.01	11
2001-0583e	Matsushita Electric	Rice Cooker	National	21.May.01	4.Jun.01	11
2001-0583f	Matsushita Electric	Rice Cooker	National	21.May.01	4.Jun.01	11
2001-0583g	Matsushita Electric	Rice Cooker	National	21.May.01	4.Jun.01	11
2001-0591	Bhagis International	Rice Cooker	American Heritag	21.May.01	18.Jun.01	21
2001-0592	Bhagis International	Rice Cooker	Aroma	21.May.01	27.Jun.01	28
2001-0593	Vigor Mfg.	Flatiron	Aroma	22.May.01	31.May.01	8
2001-0596A	Asian Durables	Refrigerator	GE	23.May.01	5.Jun.01	10
2001-0596B	Asian Durables	Refrigerator	GE	23.May.01	5.Jun.01	10
2001-0597A	JMS International	Rice Cooker	Nikko	24.May.01	18.Jun.01	18
2001-0597B	JMS International	Rice Cooker	Nikko	24.May.01	18.Jun.01	18

Highlights indicate retest period.

**BPSTC APPLIANCE TEST REPORTS
2001**

2001-0597C	JMS International	Rice Cooker	Nikko	24.May.01	26.Jun.01	24
2001-0597D	JMS International	Rice Cooker	Nikko	24.May.01	26.Jun.01	24
2001-0623A	Mitsukoshi	Rice Cooker	Mitsukoshi	30.May.01	13.Jun.01	11
2001-0623B	Mitsukoshi	Rice Cooker	Oclar	30.May.01	13.Jun.01	11
2001-0634	New Way International	Rice Cooker	Tecnogas	31.May.01	20.Jun.01	15
2001-0648A	JVL International	Refrigerator	Chunlan	5.Jun.01	30.Jul.01	40
2001-0648B	JVL International	Refrigerator	Chunlan	5.Jun.01	30.Jul.01	40
2001-0648C	JVL International	Refrigerator	Chunlan	5.Jun.01	30.Jul.01	40
2001-0650	Asian Durables	Refrigerator	GE	5.Jun.01	17.Jul.01	31
2001-0691	Collins International	Flatiron	Moulinex	11.Jun.01	18.Jul.01	28
2001-0691A	Collins International	Flatiron	Moulinex	11.Jun.01	20.Jul.01	30
2001-0693	Matsushita Electric	Flatiron	National	13.Jun.01	26.Jul.01	32
2001-0693	Matsushita Electric	Flatiron	National	13.Jun.01	26.Jul.01	32
2001-0708A	Excellence Appliances	Refrigerator	Whirlpool	14.Jun.01	19.Jul.01	26
2001-0708B	Excellence Appliances	Refrigerator	Whirlpool	14.Jun.01	19.Jul.01	26
2001-0717A	Matsushita Electric	Flatiron	National	15.Jun.01	12.Jul.01	20
2001-0717B	Matsushita Electric	Flatiron	National	15.Jun.01	12.Jul.01	20
2001-0727	Kitchen Beauty Mktg.	Rice Cooker	Kyowa	19.Jun.01	3.Jul.01	11
2001-0728	Kitchen Beauty Mktg.	Rice Cooker	Kyowa	19.Jun.01	3.Jul.01	11
2001-0729A	Kitchen Beauty Mktg.	Rice Cooker	Kyowa	19.Jun.01	10.Jul.	16
2001-0729B	Kitchen Beauty Mktg.	Rice Cooker	Kyowa	19.Jun.01	10.Jul.01	16
2001-0730A	Rite Way Distributors	Rice Cooker	Sapoe	19.Jun.01	9.Jul.01	15
2001-0730B	Rite Way Distributors	Rice Cooker	Sapoe	19.Jun.01	9.Jul.01	15
2001-0754	Maclin Electronics	Flatiron	Promac	22.Jun.01	10.Aug.01	36
2001-0756A	Matsushita Electric	Rice Cooker	National	22.Jun.01	23.Jun.01	1
2001-0756B	Matsushita Electric	Rice Cooker	National	22.Jun.01	23.Jun.01	1
2001-0756c	Matsushita Electric	Rice Cooker	National	22.Jun.01	23.Jun.01	1
2001-0782	Bhagis International	Rice Cooker	American Heritag	28.Jun.01	10.Jul.01	9
2001-0798A	Camville Manufacturing	Rice Cooker	Standard	4.Jul.01	7.Jul.01	3
2001-0798B	Camville Manufacturing	Rice Cooker	Standard	4.Jul.01	7.Jul.01	3
2001-0857A	Sanyo Philippines	Refrigerator	Sanyo	13.Jul.01	18.Sep.01	48
2001-0857B	Sanyo Philippines	Refrigerator	Sanyo	13.Jul.01	18.Sep.01	48
2001-0857C	Sanyo Philippines	Refrigerator	Sanyo	13.Jul.01	18.Sep.01	48
2001-0857D	Sanyo Philippines	Refrigerator	Sanyo	13.Jul.01	18.Sep.01	48
2001-0857E	Sanyo Philippines	Refrigerator	Sanyo	13.Jul.01	18.Sep.01	48
2001-0857F	Sanyo Philippines	Refrigerator	Sanyo	13.Jul.01	18.Sep.01	48
2001-0857G	Sanyo Philippines	Refrigerator	Sanyo	13.Jul.01	18.Sep.01	48
2001-0857H	Sanyo Philippines	Refrigerator	Sanyo	13.Jul.01	18.Sep.01	48
2001-0863A	Vigor Mfg.	Flatiron	Fukuda	16.Jul.01	27.Jul.01	10
2001-0863B	Vigor Mfg.	Flatiron	American Electric	16.Jul.01	27.Jul.01	10
2001-0884A	Matsushita Electric	Rice Cooker	National	18.Jul.01	30.Jul.01	9
2001-0884B	Matsushita Electric	Rice Cooker	National	18.Jul.01	30.Jul.01	9
2001-0893	Bhagis International	Flatiron	American Heritag	18.Jul.01	17.Sep.01	44
2001-0917A	Matsushita Electric	Refrigerator	National	26.Jul.01	28.Aug.01	24
2001-0917B	Matsushita Electric	Refrigerator	National	26.Jul.01	28.Aug.01	24
2001-0924	Kitchen Beauty Mktg.	Flatiron	Kyowa	27.Jul.01	3.Aug.01	6
2001-0927A	Matsushita Electric	Rice Cooker	National	27.Jul.01	2.Aug.01	5
2001-0927B	Matsushita Electric	Rice Cooker	National	27.Jul.01	2.Aug.01	5
2001-0927C	Matsushita Electric	Rice Cooker	National	27.Jul.01	2.Aug.01	5
2001-0941	Em-Ar Enterprises	Rice Cooker	Rice King 555	31.Jul.01	8.Aug.01	7
2001-0946A	Mitsukoshi	Flatiron	Mitsukoshi	1.Jul.01	14.Aug.01	32
2001-0946B	Mitsukoshi	Flatiron	Mitsukoshi	1.Jul.01	14.Aug.01	32
2001-0946C	Mitsukoshi	Flatiron	Mitsukoshi	1.Jul.01	14.Aug.01	32
2001-0956A	Hanabishi	Flatiron	Hanabishi	2.Aug.01	21.Sep.01	37
2001-0956B	Hanabishi	Flatiron	Hanabishi	2.Aug.01	22.Aug.01	15

Highlights indicate retest period.

**BPSTC APPLIANCE TEST REPORTS
2001**

2001-0956C	Hanabishi	Flatiron	Hanabishi	2.Aug.01	22.Aug.01	15
2001-0956D	Hanabishi	Flatiron	Hanabishi	2.Aug.01	21.Sep.01	37
2001-0957A	Hanabishi	Rice Cooker	Hanabishi	2.Aug.01	7.Sep.01	27
2001-0957B	Hanabishi	Rice Cooker	Hanabishi	2.Aug.01	7.Sep.01	27
2001-0957C	Hanabishi	Rice Cooker	Hanabishi	2.Aug.01	7.Sep.01	27
2001-0962A	Matsushita Electric	Flatiron	National	2.Aug.01	17.Aug.01	12
2001-0962A2	Matsushita Electric	Flatiron	National	2.Aug.01	17.Aug.01	12
2001-0962B1	Matsushita Electric	Flatiron	National	2.Aug.01	17.Aug.01	12
2001-0962B2	Matsushita Electric	Flatiron	National	2.Aug.01	17.Aug.01	12
2001-0962B3	Matsushita Electric	Flatiron	National	2.Aug.01	17.Aug.01	12
2001-0962B4	Matsushita Electric	Flatiron	National	2.Aug.01	17.Aug.01	12
2001-0966A	Concepcion Industries	Refrigerator	Kelvinator	3.Aug.01	18.Sep.01	33
2001-0966B	Concepcion Industries	Refrigerator	Condura	3.Aug.01	18.Sep.01	33
2001-0973	Ramesh Trading	Flatiron	Maspion	6.Aug.01	31.Aug.01	20
2001-0981	Bhagis International	Rice Cooker	American Electric	7.Aug.01	10.Aug.01	4
2001-0983	JMS International	Air pot	Arparc	18.Jul.01	17.Sep.01	44
2001-0992A	Collins International	Flatiron	Dowell	7.Aug.01	24.Aug.01	14
2001-0992B	Collins International	Flatiron	Dowell	7.Aug.01	24.Aug.01	14
2001-0996A	Mitsukoshi	Rice Cooker	Mitsukoshi	7.Aug.01	10.Aug.01	4
2001-0996B	Mitsukoshi	Rice Cooker	Oclar	7.Aug.01	10.Aug.01	4
2001-1017A	Bhagis International	Rice Cooker	American Heritag	9.Aug.01	28.Aug.01	14
2001-1017B	Bhagis International	Rice Cooker	American Heritag	9.Aug.01	28.Aug.01	14
2001-1019	Maclin Electronics	Rice Cooker	Promac	10.Aug.01	21.Aug.01	8
2001-1030	Focus Global Mfg.	Flatiron	Oster	15.Aug.01	23.Aug.01	7
2001-1071A	Rite Way Distributors	Rice Cooker	Sapoe	24.Aug.01	28.Aug.01	3
2001-1071B	Rite Way Distributors	Rice Cooker	Sapoe	24.Aug.01	28.Aug.01	3
2001-1075A	Collins International	Rice Cooker	Crown	28.Aug.01	23.Oct.01	41
2001-1075B	Collins International	Rice Cooker	Crown	28.Aug.01	23.Oct.01	41
2001-1075C	Collins International	Rice Cooker	Sunbeam	28.Aug.01	23.Oct.01	41
2001-1077	New Way International	Rice Cooker	Standard	28.Aug.01	7.Sep.01	9
2001-1078	New Way International	Rice Cooker	Standard	28.Aug.01	7.Sep.01	9
2001-1079	New Way International	Rice Cooker	Standard	28.Aug.01	7.Sep.01	9
2001-1080	Em-Ar Enterprises	Rice Cooker	Rice King 555	28.Aug.01	31.Aug.01	4
2001-1083A	Matsushita Electric	Flatiron	National	28.Aug.01	17.Sep.01	15
2001-1083B	Matsushita Electric	Flatiron	National	28.Aug.01	17.Sep.01	15
2001-1084A	Matsushita Electric	Rice Cooker	National	28.Aug.01	10.Sep.01	10
2001-1084B	Matsushita Electric	Rice Cooker	National	28.Aug.01	10.Sep.01	10
2001-1085A	Matsushita Electric	Rice Cooker	National	28.Aug.01	10.Sep.01	10
2001-1085B	Matsushita Electric	Rice Cooker	National	28.Aug.01	10.Sep.01	10
2001-1086A	Matsushita Electric	Rice Cooker	National	28.Aug.01	10.Sep.01	10
2001-1086A	Matsushita Electric	Rice Cooker	National	28.Aug.01	12.Sep.01	12
2001-1086B	Matsushita Electric	Rice Cooker	National	28.Aug.01	12.Sep.01	12
2001-1086C	Matsushita Electric	Rice Cooker	National	28.Aug.01	12.Sep.01	12
2001-1087A	Matsushita Electric	Rice Cooker	National	28.Aug.01	13.Sep.01	13
2001-1087B	Matsushita Electric	Rice Cooker	National	28.Aug.01	13.Sep.01	13
2001-1087C	Matsushita Electric	Rice Cooker	National	28.Aug.01	13.Sep.01	13
2001-1107	Silverforge Mfg. Corp.	Rice Cooker	Imarflex	31.Aug.01	18.Sep.01	13
2001-1119	New Behnelyn Ent	Rice Cooker	Caribbean	3.Sep.01	18.Sep.01	12
2001-1136A	Continental Sales	Rice Cooker	Midea	5.Sep.01	21.Sep.01	13
2001-1136B	Continental Sales	Rice Cooker	Midea	5.Sep.01	21.Sep.01	13
2001-1186A	Matsushita Electric	Flatiron	National	14.Sep.01	5.Oct.01	16
2001-1186B	Matsushita Electric	Flatiron	National	14.Sep.01	5.Oct.01	16
2001-1206A	New Way International	Rice Cooker	Elephant	19.Sep.01	26.Sep.01	6
2001-1206B	New Way International	Flatiron	Elephant	19.Sep.01	26.Sep.01	6
2001-1207	Top Fair	Rice Cooker	Standard	19.Sep.01	28.Sep.01	8

Highlights indicate retest period.

**BPSTC APPLIANCE TEST REPORTS
2001**


2001-1219	TT Corporation	Refrigerator	Akira	20.Sep.01	9.Oct.01	14
2001-1221	Asian Durables	Refrigerator	GE	20.Sep.01	26.Sep.01	5
2001-1230	Kinsonic Philippines	Rice Cooker	Klestar	24.Sep.01	10.Oct.01	13
2001-1240A	Matsushita Electric	Rice Cooker	National	25.Sep.01	9.Oct.01	11
2001-1240B	Matsushita Electric	Rice Cooker	National	25.Sep.01	9.Oct.01	11
2001-1240C	Matsushita Electric	Rice Cooker	National	25.Sep.01	9.Oct.01	11
2001-1240D	Matsushita Electric	Rice Cooker	National	25.Sep.01	9.Oct.01	11
2001-1240E	Matsushita Electric	Rice Cooker	National	25.Sep.01	9.Oct.01	11
2001-1241A	Matsushita Electric	Rice Cooker	National	25.Sep.01	10.Oct.01	12
2001-1241B	Matsushita Electric	Rice Cooker	National	25.Sep.01	10.Oct.01	12
2001-1242A	Matsushita Electric	Rice Cooker	National	25.Sep.01	10.Oct.01	12
2001-1242B	Matsushita Electric	Rice Cooker	National	25.Sep.01	10.Oct.01	12
2001-1281	Vigor Mfg.	Rice Cooker	Klestar	4.Oct.01	15.Nov.01	31
2001-1287	Bhagis International	Flatiron	American Heritag	4.Oct.01	22.Oct.01	13
2001-1293	New Way International	Rice Cooker	Elephant	5.Oct.01	15.Oct.01	7
2001-1296	Continental Sales	Refrigerator	Haier	9.Oct.01	23.Oct.01	11
2001-1297	Continental Sales	Refrigerator	Haier	9.Oct.01	29.Oct.01	15
2001-1315A	Vigor Mfg.	Flatiron	Fukuda	11.Oct.01	17.Oct.01	5
2001-1315B	Vigor Mfg.	Flatiron	American Electric	11.Oct.01	17.Oct.01	5
2001-1325	Maclin Electronics	Flatiron	Promac	15.Oct.01	23.Oct.01	7
2001-1326	Bhagis International	Rice Cooker	American Heritag	15.Oct.01	30.Oct.01	12
2001-1327	Bhagis International	Rice Cooker	American Heritag	15.Oct.01	19.Oct.01	5
2001-1328	Bhagis International	Rice Cooker	Aroma	15.Oct.01	19.Oct.01	5
2001-1332A	Tisdall Industrial Corp.	Flatiron	Standard	16.Oct.01	22.Oct.01	5
2001-1332B	Tisdall Industrial Corp.	Flatiron	Standard	16.Oct.01	22.Oct.01	5
2001-1337	Continental Sales	Rice Cooker	Midea	16.Oct.01	26.Oct.01	9
2001-1350	Camel Appliances	Flatiron	Camel	18.Oct.01	30.Oct.01	9
2001-1381	680 Home Appliances	Flatiron	Durastar	22.Oct.01	26.Oct.01	5
2001-1399A	Matsushita Electric	Rice Cooker	National	24.Oct.01	5.Nov.01	9
2001-1399B	Matsushita Electric	Rice Cooker	National	24.Oct.01	5.Nov.01	9
2001-1399C	Matsushita Electric	Rice Cooker	National	24.Oct.01	5.Nov.01	9
2001-1399D	Matsushita Electric	Rice Cooker	National	24.Oct.01	5.Nov.01	9
2001-1399E	Matsushita Electric	Rice Cooker	National	24.Oct.01	5.Nov.01	9
2001-1399F	Matsushita Electric	Rice Cooker	National	24.Oct.01	5.Nov.01	9
2001-1399G	Matsushita Electric	Rice Cooker	National	24.Oct.01	5.Nov.01	9
2001-1399H	Matsushita Electric	Rice Cooker	National	24.Oct.01	5.Nov.01	9
2001-1399I	Matsushita Electric	Rice Cooker	National	24.Oct.01	5.Nov.01	9
2001-1399J	Matsushita Electric	Rice Cooker	National	24.Oct.01	5.Nov.01	9
2001-1430	Bhagis International	Flatiron	American Electric	31.Oct.01	15.Nov.01	12
2001-1431	Bhagis International	Rice Cooker	American Electric	21.Oct.01	21.Nov.01	23
2001-1454	Matsushita Electric	Refrigerator	National	22.Oct.01	10.Nov.01	15
2001-1459	New Behnelyn Ent	Rice Cooker	Caribbean	9.Nov.01	15.Nov.01	5
2001-1483	Sanyo Philippines	Refrigerator	Sanyo	4.Nov.01	13.Dec.01	29
2001-1497	Kinsonic Philippines	Rice Cooker	Kolin	15.Nov.01	21.Nov.01	5
2001-1501	Kitchen Beauty Mktg.	Rice Cooker	Kyowa	16.Nov.01	21.Nov.01	4
2001-1502	Kitchen Beauty Mktg.	Flatiron	Kyowa	16.Nov.01	21.Nov.01	4
2001-1521A	Matsushita Electric	Rice Cooker	National	21.Nov.01	28.Nov.01	6
2001-1521B	Matsushita Electric	Rice Cooker	National	21.Nov.01	28.Nov.01	6
2001-1521C	Matsushita Electric	Rice Cooker	National	21.Nov.01	28.Nov.01	6
2001-1521D	Matsushita Electric	Rice Cooker	National	21.Nov.01	28.Nov.01	6
2001-1521E	Matsushita Electric	Rice Cooker	National	21.Nov.01	28.Nov.01	6
2001-1546A	Philips	Flatiron	Philips	26.Nov.01	5.Dec.01	8
2001-1546B	Philips	Flatiron	Philips	26.Nov.01	5.Dec.01	8
2001-1546C	Philips	Flatiron	Philips	26.Nov.01	5.Dec.01	8
2001-1547A	Philips	Rice Cooker	Philips	26.Nov.01	12.Dec.01	13

Highlights indicate retest period.

**BPSTC APPLIANCE TEST REPORTS
2001**

2001-1547B	Philips	Rice Cooker	Philips	26.Nov.01	12.Dec.01	13
2001-1547C	Philips	Rice Cooker	Philips	26.Nov.01	12.Dec.01	13
2001-1547E	Philips	Rice Cooker	Philips	26.Nov.01	12.Dec.01	13
2001-1547F	Philips	Rice Cooker	Philips	26.Nov.01	12.Dec.01	13
2001-1552	Kitchen Beauty Mktg.	Rice Cooker	Kyowa	27.Nov.01	12.Dec.01	12
2001-1553A	Kitchen Beauty Mktg.	Flatiron	Kyowa	27.Nov.01	12.Dec.01	12
2001-1553B	Kitchen Beauty Mktg.	Flatiron	Kyowa	27.Nov.01	12.Dec.01	12
2001-1554	Kinsonic Philippines	Rice Cooker	Kolin	27.Nov.01	29.Nov.01	3
2001-1612A	HRC Trading	Rice Cooker	America's Kitcher	11.Dec.01	14.Dec.01	4
2001-1612B	HRC Trading	Rice Cooker	America's Kitcher	11.Dec.01	14.Dec.01	4

Flatiron	66
Rice Cooker	160
Refrigerator	47
Air pot	8
Blender	0
Oven Toaster	1
TOTAL	282




Highlights indicate retest period.

**BPSTC APPLIANCE TEST REPORTS
2002**

Sample Code	Company Name	Product	Brand	Date Received	Date Report Issued	Processing Days
2002-0002	Collins International Trading Co	Rice Cooker	Sunbeam	21.Dec.01	18.Jan.02	27
2002-0003A	Matsushita Electric Philippines	Rice Cooker	National	2.Jan.02	14.Jan.02	12
2002-0003B	Matsushita Electric Philippines	Rice Cooker	National	2.Jan.02	14.Jan.02	12
2002-0003C	Matsushita Electric Philippines	Rice Cooker	National	2.Jan.02	14.Jan.02	12
2002-0003D	Matsushita Electric Philippines	Rice Cooker	National	2.Jan.02	14.Jan.02	12
2002-0003E	Matsushita Electric Philippines	Rice Cooker	National	2.Jan.02	14.Jan.02	12
2002-0003F	Matsushita Electric Philippines	Rice Cooker	National	2.Jan.02	14.Jan.02	12
2002-0013	Singer Sewing Machine	Refrigerator	Singer	3.Jan.02	27.Jan.02	24
2002-0031	Bhagis International Trading Co	Rice Cooker	American Electric	15.Jan.02	12.Feb.02	27
2002-0075	Unisphere Holdings	Refrigerator	Admiral	23.Jan.02	19.Mar.02	56
2002-0077A	Collins International Trading Co	Flatiron	Ultra	24.Jan.02	27.Feb.02	33
2002-0077B	Collins International Trading Co	Flatiron		24.Jan.02	27.Feb.02	33
2002-0077C	Collins International Trading Co	Flatiron		24.Jan.02	27.Feb.02	33
2002-0080	3D industries	Rice Cooker	3D	25.Jan.02	30.Jan.02	5
2002-0081	Continental Sales Inc.	Refrigerator	Haier	25.Jan.02	1.Apr.02	66
2002-0088A	Electrolux Philippines	Refrigerator	Electrolux	28.Jan.02	9.Apr.02	71
2002-0088B	Electrolux Philippines	Refrigerator	Electrolux	28.Jan.02	9.Apr.02	71
2002-0122	Bhagis International Trading Co	Rice Cooker	American Heritag	6.Feb.02	3.May.02	87
2002-0138	Collins International Trading Co	Flatiron	Rikon	11.Feb.02	22.Feb.02	11
2002-0153	Kinsonic Philippines Inc.	Rice Cooker	Kolin	14.Feb.02	2.Apr.02	48
2002-0158A	LG Collins electronics Manila	Refrigerator	LG	15.Feb.02	9.Apr.02	54
2002-0158B	LG Collins electronics Manila	Refrigerator	LG	15.Feb.02	9.Apr.02	54
2002-0158C	LG Collins electronics Manila	Refrigerator	LG	15.Feb.02	9.Apr.02	54
2002-0158D	LG Collins electronics Manila	Refrigerator	LG	15.Feb.02	23.May.02	98
2002-0158E	LG Collins electronics Manila	Refrigerator	LG	15.Feb.02	23.May.02	98
2002-0158F	LG Collins electronics Manila	Refrigerator	LG	15.Feb.02	17.Sep.02	212
2002-0158G	LG Collins electronics Manila	Refrigerator	LG	15.Feb.02	23.May.02	98
2002-0158H	LG Collins electronics Manila	Refrigerator	LG	15.Feb.02	23.May.02	98
2002-0178	Matsushita Electric Philippines	Rice Cooker	National	14.Feb.02	2.Apr.02	48
2002-0190A	Electrolux Philippines	Refrigerator	White Westingho	27.Feb.02	12.Apr.02	45
2002-0190B	Electrolux Philippines	Refrigerator	White Westingho	27.Feb.02	12.Apr.02	45
2002-0190C	Electrolux Philippines	Refrigerator	White Westingho	27.Feb.02	12.Apr.02	45
2002-0198A	Matsushita Electric Philippines	Rice Cooker	National	28.Feb.02	15.Mar.02	15
2002-0198B	Matsushita Electric Philippines	Rice Cooker	National	28.Feb.02	12.Mar.02	12
2002-0198C	Matsushita Electric Philippines	Rice Cooker	National	28.Feb.02	12.Mar.02	12
2002-0198D	Matsushita Electric Philippines	Rice Cooker	National	28.Feb.02	15.Mar.02	15
2002-0198E	Matsushita Electric Philippines	Rice Cooker	National	28.Feb.02	15.Mar.02	15
2002-0198F	Matsushita Electric Philippines	Rice Cooker	National	28.Feb.02	18.Mar.02	18
2002-0198G	Matsushita Electric Philippines	Rice Cooker	National	28.Feb.02	18.Mar.02	18
2002-0199	Union Industries International	Refrigerator	Union	1.Mar.02	26.Apr.02	55
2002-0203	Samsung electronics Philippines	Refrigerator	Samsung	1.Mar.02	25.Mar.02	24
2002-0211A	Bhagis International Trading Co	Flatiron	American Electric	4.Mar.02	3.Apr.02	29
2002-0211B	Bhagis International Trading Co	Flatiron	American Electric	4.Mar.02	3.Apr.02	29
2002-0220A	Camel Appliances Mfg.Corp.	Rice Cooker	Camel	6.Mar.02	9.Apr.02	33
2002-0220B	Camel Appliances Mfg.Corp.	Rice Cooker	Camel	6.Mar.02	9.Apr.02	33
2002-0220C	Camel Appliances Mfg.Corp.	Rice Cooker	Camel	6.Mar.02	9.Apr.02	33
2002-0222	Camel Appliances Mfg.Corp.	Flatiron	Camel	6.Mar.02	3.Apr.02	27
2002-0227A	Matsushita Electric Philippines	Flatiron	National	11.Mar.02	16.Apr.02	35
2002-0227B	Matsushita Electric Philippines	Flatiron	National	11.Mar.02	4.Apr.02	23
2002-0227C	Matsushita Electric Philippines	Flatiron	National	11.Mar.02	9.Apr.02	28
2002-0239	Kinsonic Philippines Inc.	Rice Cooker	NEC	12.Mar.02	12.Apr.02	30
2002-0253	Bhagis International Trading Co	Rice Cooker	American Electric	13.Apr.02	14.Apr.02	1
2002-0264	Polytron Philippines Co.	Refrigerator	Polytron	18.Mar.02	29.Apr.02	41

Highlights indicate retest period.

**BPSTC APPLIANCE TEST REPORTS
2002**

2002-0269	Capital Import and Export	Rice Cooker	Hanson	18.Mar.02	23.Apr.02	35
2002-0276A	Matsushita Electric Philippines	Flatiron	National	19.Mar.02	9.Apr.02	20
2002-0276B	Matsushita Electric Philippines	Flatiron	National	19.Mar.02	9.Apr.02	20
2002-0280A	Samsung electronics Philippines	Refrigerator	Samsung	21.Mar.02	15.Apr.02	24
2002-0280B	Samsung electronics Philippines	Refrigerator	Samsung	21.Mar.02	15.Apr.02	24
2002-0280C	Samsung electronics Philippines	Refrigerator	Samsung	21.Mar.02	15.Apr.02	24
2002-0283A	Sharp Philippines Corp.	Refrigerator	Sharp	25.Mar.02	21.May.02	56
2002-0283B	Sharp Philippines Corp.	Refrigerator	Sharp	25.Mar.02	21.May.02	56
2002--0284A	New Behnelyn Enterprises	Rice Cooker	Tiger	26.Mar.02	18.Apr.02	22
2002-0284B	New Behnelyn Enterprises	Rice Cooker	Tiger	26.Mar.02	18.Apr.02	22
2002-0284C	New Behnelyn Enterprises	Rice Cooker	Tiger	26.Mar.02	26.Apr.02	30
2002--0301	Kitchen Beauty Marketing	Rice Cooker	Kyowa	2.Apr.02	12.Apr.02	10
2002-0302	HRC Trading	Rice Cooker	America's Kitche	2.Apr.02	12.Apr.02	10
2002-0332A	Wimpex Group	Rice Cooker	Wimpex	11.Apr.02	7.May.02	26
2002-0332B	Wimpex Group	Rice Cooker	Wimpex	11.Apr.02	7.May.02	26
2002-0335A	Wonderful Art and Craft Ent.	Rice Cooker	Suteki	11.Apr.02	23.Apr.02	12
2002-0335B	Wonderful Art and Craft Ent.	Rice Cooker	Suteki	11.Apr.02	23.Apr.02	12
2002-0335C	Wonderful Art and Craft Ent.	Rice Cooker	Suteki	11.Apr.02	23.Apr.02	12
2002-0335D	Wonderful Art and Craft Ent.	Rice Cooker	Suteki	11.Apr.02	23.Apr.02	12
2002-0335E	Wonderful Art and Craft Ent.	Rice Cooker	Suteki	11.Apr.02	23.Apr.02	12
2002-0335F	Wonderful Art and Craft Ent.	Rice Cooker	Suteki	11.Apr.02	23.Apr.02	12
2002-0340A	LG Collins electronics Manila	Refrigerator	LG	12.Apr.02	16.May.02	34
2002-0340B	LG Collins electronics Manila	Refrigerator	LG	12.Apr.02	16.May.02	34
2002-0340C	LG Collins electronics Manila	Refrigerator	LG	12.Apr.02	19.Aug.02	127
2002-0340D	LG Collins electronics Manila	Refrigerator	LG	12.Apr.02	19.Aug.02	127
2002-0342	Kitchen Beauty Marketing	Rice Cooker	Kyowa	12.Apr.02	26.Apr.02	14
2002-0344A	Kolin Philippines	Refrigerator	Kolin	15.Apr.02	29.May.02	44
2002-0344B	Kolin Philippines	Refrigerator	Kolin	15.Apr.02	29.May.02	44
2002-0363	HRC Trading	Rice Cooker	America's Kitche	16.Apr.02	29.Apr.02	13
2002-0363A	TT Corporation	Rice Cooker	Akira	17.Jun.02	24.Jun.02	7
2002-0369A	Concepcion industries	Refrigerator	Condura	17.Apr.02	16.Aug.02	119
2002-0369B	Concepcion industries	Refrigerator	Condura	17.Apr.02	16.Aug.02	119
2002-0369C	Concepcion industries	Refrigerator	Condura	18.Apr.02	31.Jul.02	103
2002-0369D	Concepcion industries	Refrigerator	Kelvinator	19.Apr.02	15.Jul.02	86
2002-0369E	Concepcion industries	Refrigerator	Kelvinator	20.Apr.02	29.Jun.02	69
2002-0372	HOA Industrial Hardware	Rice Cooker	Yokohama	18.Apr.02	15.May.02	27
2002-0407	Sanyo Philippines Inc.	Rice Cooker	Sanyo	25.Apr.02	14.May.02	19
2002-0411A	Camel Appliances Mfg.Corp.	Rice Cooker	Camel	26.Apr.02	30.Apr.02	4
2002-0411B	Camel Appliances Mfg.Corp.	Rice Cooker	Camel	26.Apr.02	30.Apr.02	4
2002-0411C	Camel Appliances Mfg.Corp.	Rice Cooker	Camel	26.Apr.02	30.Apr.02	4
2002-0412	Camel Appliances Mfg.Corp.	Flatiron	Camel	26.Apr.02	30.Apr.02	4
2002-0423A	Northern Islands Co. inc.	Flatiron	3D	29.Apr.02	28.May.02	29
2002-0423B	Northern Islands Co. inc.	Flatiron	3D	29.Apr.02	28.May.02	29
2002-0423C	Northern Islands Co. inc.	Flatiron	3D	29.Apr.02	28.May.02	29
2002-0425	Sanyo Philippines Inc.	Electric Fan	Sanyo	30.Apr.02	18.Jun.02	48
2002-0435A	Lexan Enterprises	Rice Cooker	Active Home	2.May.02	23.May.02	21
2002-0435B	Lexan Enterprises	Rice Cooker	Active Home	2.May.02	15.May.02	13
2002-0435B	Lexan Enterprises	Rice Cooker	Active Home	2.May.02	15.May.02	13
2002-0435B	Lexan Enterprises	Rice Cooker	Active Home	2.May.02	15.May.02	13
2002-0457A	Active Electronics	Rice Cooker	Weili	7.May.02	23.May.02	16
2002-0457B	Active Electronics	Rice Cooker	Weili	7.May.02	23.May.02	16
2002-0461	P and L Sales	Rice Cooker	Hengmaei	8.May.02	23.May.02	15
2002-0478	Electrolux Philippines	Refrigerator	White Westingho	13.May.02	14.May.02	1
2002-0481	Collins International Trading Co	Rice Cooker	Dowell	14.May.02	10.Jun.02	26
2002-0482	Sharp Philippines Corp.	Refrigerator	Sharp	14.May.02	14.Aug.02	90

Highlights indicate retest period.

**BPSTC APPLIANCE TEST REPORTS
2002**

2002-0497	Kinsonic Philippines Inc.	Rice Cooker	Kolin	17.May.02	24.May.02	7
2002-0502	Collins International Trading Co	Flatiron		20.May.02	28.May.02	8
2002-0504A	Modern House Intl.	Flatiron	Blsck and Decker	21.May.02	30.May.02	9
2002-0504B	Modern House Intl.	Flatiron	Blsck and Decker	21.May.02	30.May.02	9
2002-0504C	Modern House Intl.	Flatiron	Blsck and Decker	21.May.02	30.May.02	9
2002-0504D	Modern House Intl.	Flatiron	Blsck and Decker	21.May.02	30.May.02	9
2002-0504E	Modern House Intl.	Flatiron	Blsck and Decker	21.May.02	30.May.02	9
2002-0511	Koret Enterprises	Flatiron	Fukuda	21.May.02	6.Jun.02	15
2002-0540A	Matsushita Electric Philippines	Rice Cooker	National	29.May.02	10.Jun.02	11
2002-0540B	Matsushita Electric Philippines	Rice Cooker	National	29.May.02	10.Jun.02	11
2002-0540C	Matsushita Electric Philippines	Rice Cooker	National	29.May.02	10.Jun.02	11
2002-0540D	Matsushita Electric Philippines	Rice Cooker	National	29.May.02	10.Jun.02	11
2002-0540E	Matsushita Electric Philippines	Rice Cooker	National	29.May.02	10.Jun.02	11
2002-0540F	Matsushita Electric Philippines	Rice Cooker	National	29.May.02	10.Jun.02	11
2002-0540G	Matsushita Electric Philippines	Rice Cooker	National	29.May.02	10.Jun.02	11
2002-0542A	Chin Yi Import Export	Flatiron	Sweet Home	29.May.02	17.Jun.02	18
2002-0542B	Chin Yi Import Export	Flatiron	Sweet Home	29.May.02	17.Jun.02	18
2002-0543	Chin Yi Import Export	Rice Cooker	Sweet Home	29.May.02	11.Jun.02	12
2002-0546A	Wonderful Art and Craft Ent.	Rice Cooker	Suteki	29.May.02	31.May.02	2
2002-0546B	Wonderful Art and Craft Ent.	Rice Cooker	Suteki	29.May.02	31.May.02	2
2002-0546C	Wonderful Art and Craft Ent.	Rice Cooker	Suteki	29.May.02	31.May.02	2
2002-0546D	Wonderful Art and Craft Ent.	Rice Cooker	Suteki	29.May.02	31.May.02	2
2002-0546E	Wonderful Art and Craft Ent.	Rice Cooker	Suteki	29.May.02	31.May.02	2
2002-0568A	Philips Electronics and Lighting	Rice Cooker	Philips	5.Jun.02	21.Jun.02	16
2002-0568B	Philips Electronics and Lighting	Rice Cooker	Philips	6.Jun.02	22.Jun.02	16
2002-0568C	Philips Electronics and Lighting	Rice Cooker	Philips	7.Jun.02	23.Jun.02	16
2002-0568D	Philips Electronics and Lighting	Rice Cooker	Philips	8.Jun.02	24.Jun.02	16
2002-0613	Power Art Commercial	Rice Cooker	Yokohama	13.Jun.02	24.Jun.02	11
2002-0629A	Lexan Enterprises	Rice Cooker	Active Home	17.Jun.02	18.Jun.02	1
2002-0629B	Lexan Enterprises	Rice Cooker	Active Home	17.Jun.02	18.Jun.02	1
2002-0629C	Lexan Enterprises	Rice Cooker	Active Home	17.Jun.02	18.Jun.02	1
2002-0629D	Lexan Enterprises	Rice Cooker	Active Home	17.Jun.02	18.Jun.02	1
2002-0631A	Modern House Intl.	Flatiron	Blsck and Decker	17.Jun.02	18.Jun.02	1
2002-0631B	Modern House Intl.	Flatiron	Blsck and Decker	17.Jun.02	18.Jun.02	1
2002-0631C	Modern House Intl.	Flatiron	Blsck and Decker	17.Jun.02	18.Jun.02	1
2002-0631D	Modern House Intl.	Flatiron	Blsck and Decker	17.Jun.02	18.Jun.02	1
2002-0631E	Modern House Intl.	Flatiron	Blsck and Decker	17.Jun.02	18.Jun.02	1
2002-0636B	TT Corporation	Flatiron	Akira	17.Jun.02	25.Jun.02	8
2002-0636B	TT Corporation	Flatiron	Akira	17.Jun.02	25.Jun.02	8
2002-0636B	TT Corporation	Flatiron	Akira	17.Jun.02	25.Jun.02	8
2002-0638	Sharp Philippines Corp.	Refrigerator	Sharp	18.Jun.02	14.Aug.02	56
2002-0641A	Matsushita Electric Philippines	Rice Cooker	National	18.Jun.02	3.Jul.02	15
2002-0641B	Matsushita Electric Philippines	Rice Cooker	National	18.Jun.02	3.Jul.02	15
2002-0641C	Matsushita Electric Philippines	Rice Cooker	National	18.Jun.02	3.Jul.02	15
2002-0641D	Matsushita Electric Philippines	Rice Cooker	National	18.Jun.02	3.Jul.02	15
2002-0641E	Matsushita Electric Philippines	Rice Cooker	National	18.Jun.02	3.Jul.02	15
2002-0641F	Matsushita Electric Philippines	Rice Cooker	National	18.Jun.02	3.Jul.02	15
2002-0641G	Matsushita Electric Philippines	Rice Cooker	National	18.Jun.02	3.Jul.02	15
2002-0646	TT Corporation	Refrigerator	Akira	19.Jun.02	22.Jul.02	33
2002-0665A	Goldmann Industrial Corp.	Rice Cooker	Camel	25.Jun.02	9.Jul.02	14
2002-0665B	Goldmann Industrial Corp.	Rice Cooker	Camel	25.Jun.02	9.Jul.02	14
2002-0665C	Goldmann Industrial Corp.	Rice Cooker	Camel	25.Jun.02	9.Jul.02	14
2002-0665D	Goldmann Industrial Corp.	Rice Cooker	Camel	25.Jun.02	9.Jul.02	14
2002-0665E	Goldmann Industrial Corp.	Rice Cooker	Camel	25.Jun.02	9.Jul.02	14
2002-0672	Koret Enterprises	Flatiron	Fukuda	25.Jun.02	28.Jun.02	3

Highlights indicate retest period.

**BPSTC APPLIANCE TEST REPORTS
2002**

2002-0674	T. C. Yamzon Trading	Flatiron	Sieg	25.Jun.02	16.Jul.02	21
2002-0711C	Concepcion industries	Refrigerator	Kelvinator	5.Jul.02	5.Sep.02	60
2002-0711D	Concepcion industries	Refrigerator	Kelvinator	5.Jul.02	5.Sep.02	60
2002-0718	Bhagis International Trading Co	Rice Cooker	American Electric	5.Jul.02	26.Jul.02	21
2002-0734A	TT Corporation	Rice Cooker	Akira	11.Jul.02	16.Jul.02	5
2002-0734B	TT Corporation	Rice Cooker	Akira	11.Jul.02	16.Jul.02	5
2002-0734C	TT Corporation	Rice Cooker	Akira	11.Jul.02	16.Jul.02	5
2002-0734D	TT Corporation	Rice Cooker	Akira	11.Jul.02	16.Jul.02	5
2002--0736	Asian Durables Mfg. Inc.	Refrigerator	GE	12.Jul.02	30.Aug.02	48
2002--0736	Asian Durables Mfg. Inc.	Refrigerator	GE	12.Jul.02	30.Aug.02	48
2002--0736	Asian Durables Mfg. Inc.	Refrigerator	GE	12.Jul.02	30.Aug.02	48
2002--0745	Koret Enterprises	Flatiron	Fukuda	18.Jul.02	19.Jul.02	1
2002-0763	Koret Enterprises	Flatiron	Imarflex	19.Jul.02	23.Jul.02	4
2002-0785A	Collins International Trading Co	Flatiron	Moulinex	25.Jul.02	5.Aug.02	10
2002-0785B	Collins International Trading Co	Flatiron	Moulinex	25.Jul.02	5.Aug.02	10
2002-0786	Collins International Trading Co	Flatiron	Moulinex	26.Jul.02	5.Aug.02	9
2002-0803	Unisphere Holdings	Refrigerator	Admiral	29.Jul.02	9.Aug.02	10
2002-0804A	Camville Manufacturing Corp.	Electric Fan	Standard	30.Jul.02	23.Aug.02	23
2002-0804B	Camville Manufacturing Corp.	Electric Fan	Standard	30.Jul.02	23.Aug.02	23
2002-0804C	Camville Manufacturing Corp.	Electric Fan	Standard	30.Jul.02	23.Aug.02	23
2002-0804D	Camville Manufacturing Corp.	Electric Fan	Standard	30.Jul.02	23.Aug.02	23
2002-0805A	Camville Manufacturing Corp.	Rice Cooker	Standard	20.Jul.02	16.Aug.02	26
2002-0805B	Camville Manufacturing Corp.	Rice Cooker	Standard	20.Jul.02	16.Aug.02	26
2002-0806	Collins International Trading Co	Electric Fan	Dowell	30.Jul.02	25.Aug.02	25
2002-0807A	Matsushita Electric Philippines	Rice Cooker	National	30.Jul.02	8.Aug.02	8
2002-0807B	Matsushita Electric Philippines	Rice Cooker	National	30.Jul.02	8.Aug.02	8
2002-0807C	Matsushita Electric Philippines	Rice Cooker	National	30.Jul.02	8.Aug.02	8
2002-0807D	Matsushita Electric Philippines	Rice Cooker	National	30.Jul.02	8.Aug.02	8
2002-0807E	Matsushita Electric Philippines	Rice Cooker	National	30.Jul.02	8.Aug.02	8
2002-0807F	Matsushita Electric Philippines	Rice Cooker	National	30.Jul.02	8.Aug.02	8
2002-0807G	Matsushita Electric Philippines	Rice Cooker	National	30.Jul.02	8.Aug.02	8
2002-0808	Matsushita Electric Philippines	Rice Cooker	National	30.Jul.02	19.Aug.02	19
2002-0811A	Express Solution Marketing Cor	Rice Cooker	Exsol	31.Jul.02	19.Aug.02	19
2002-0811A	Express Solution Marketing Cor	Rice Cooker	Exsol	31.Jul.02	19.Aug.02	19
2002-0811A	Express Solution Marketing Cor	Rice Cooker	Exsol	31.Jul.02	19.Aug.02	19
2002-0811B	Express Solution Marketing Cor	Rice Cooker	Exsol	31.Jul.02	19.Aug.02	19
2002-0844A	Union Industries International	Rice Cooker	Union	7.Aug.02	28.Aug.02	21
2002-0844B	Union Industries International	Rice Cooker	Union	7.Aug.02	28.Aug.02	21
2002-0862A	CMTC International Marketing C	Rice Cooker	American Home	9.Aug.02	21.Aug.02	12
2002-0862B	CMTC International Marketing C	Rice Cooker	American Home	9.Aug.02	21.Aug.02	12
2002-0877	National Panasonic Sales Phils.	Flatiron	National	14.Aug.02	26.Aug.02	12
2002-0883A	Concepcion Carrier AirCondition	Electric Fan		15.Aug.02	5.Sep.02	20
2002-0883B	Concepcion Carrier AirCondition	Electric Fan		15.Aug.02	5.Sep.02	20
2002-0883C	Concepcion Carrier AirCondition	Electric Fan	PADMA	15.Aug.02	5.Sep.02	20
2002-0886	Active electronics Mfg. Corp.	Rice Cooker	Minami	16.Aug.02	29.Aug.02	13
2002-0887	Collins International Trading Co	Flatiron	Moulinex	16.Aug.02	19.Aug.02	3
2002-0888A	Collins International Trading Co	Flatiron	Moulinex	16.Aug.02	19.Aug.02	3
2002-0888B	Collins International Trading Co	Flatiron	Moulinex	16.Aug.02	19.Aug.02	3
2002-0889	Collins International Trading Co	Flatiron	Moulinex	16.Aug.02	29.Aug.02	13
2002-0890	Kolin Philippines	Refrigerator	Kolin	20.Aug.02	5.Sep.02	15
2002-0902A	Matsushita Electric Philippines	Refrigerator	National	20.Aug.02	5.Sep.02	15
2002-0902B	Matsushita Electric Philippines	Refrigerator	National	20.Aug.02	5.Sep.02	15
2002-0902C	Matsushita Electric Philippines	Refrigerator	National	20.Aug.02	5.Sep.02	15
2002-0902D	Matsushita Electric Philippines	Refrigerator	National	20.Aug.02	5.Sep.02	15
2002-0902E	Matsushita Electric Philippines	Refrigerator	National	20.Aug.02	5.Sep.02	15


Highlights indicate retest period.

**BPSTC APPLIANCE TEST REPORTS
2002**

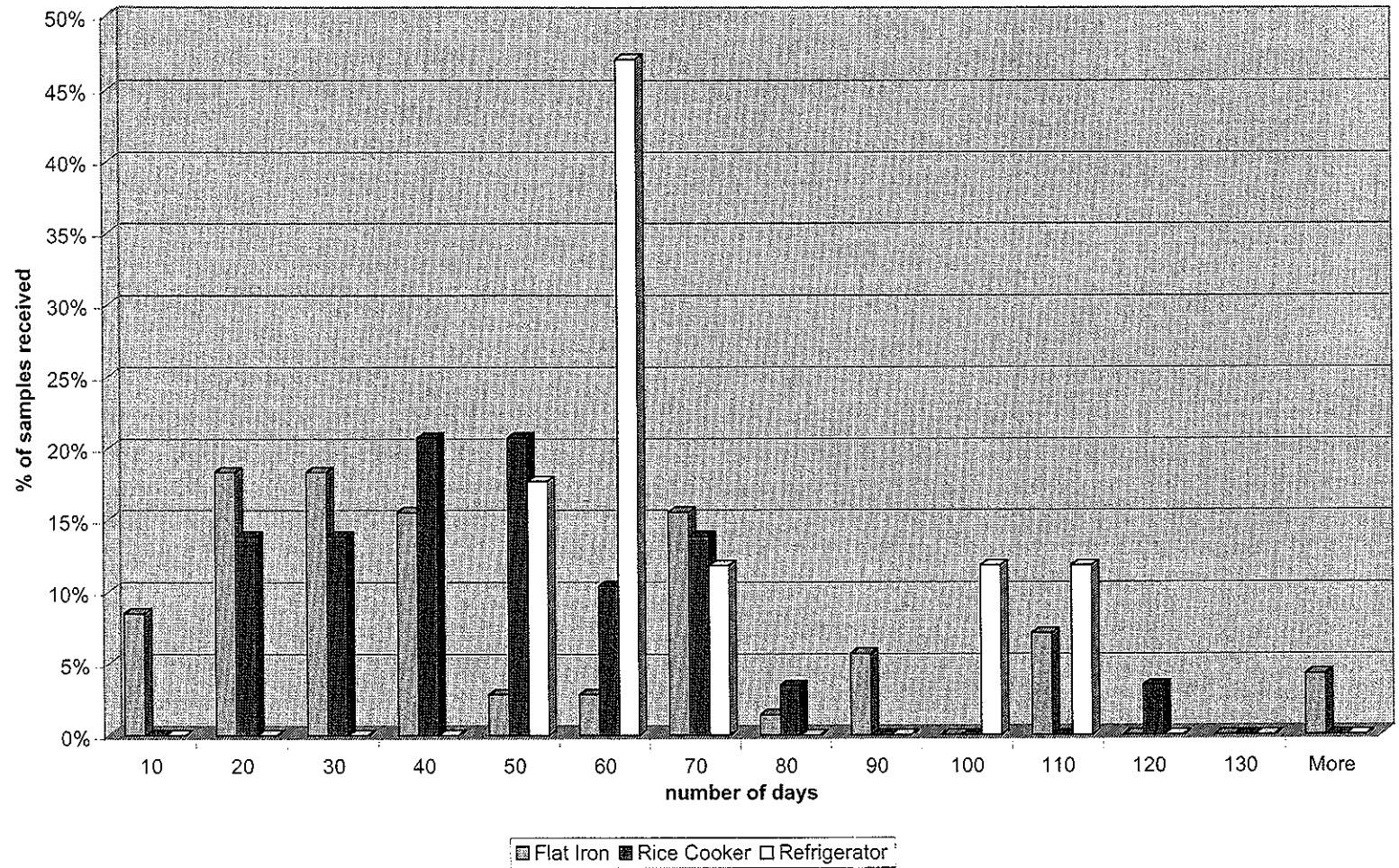
2002-0902F	Matsushita Electric Philippines	Refrigerator	National	20.Aug.02	5.Sep.02	15
2002-0907	CYA Industries	Electric Fan	OMNIA	22.Aug.02	3.Sep.02	11
2002-0912A	Dee Hwa Liong Electronics	Electric Fan	Electown	23.Aug.02	18.Sep.02	25
2002-0912B	Dee Hwa Liong Electronics	Electric Fan	Electown	23.Aug.02	18.Sep.02	25
2002-0914A	Miyata enterprises	Rice Cooker	Cooker Master	23.Aug.02	3.Sep.02	10
2002-0914b	Miyata enterprises	Rice Cooker	Cooker Master	23.Aug.02	3.Sep.02	10
2002-0986A	CMTC International Marketing C	Flatiron	American Home	10.Sep.02	17.Sep.02	7
2002-0986B	CMTC International Marketing C	Flatiron	American Home	10.Sep.02	17.Sep.02	7
2002-0990	HRC Trading	Rice Cooker	Kyowa	11.Sep.02	20.Sep.02	9
2002-0994	Kinsonic Philippines Inc.	Rice Cooker	Durastar	12.Sep.02	20.Sep.02	8
2002-1005	HRC Trading	Flatiron	Kyowa	16.Sep.02	20.Sep.02	4
2002-1018	CDF Enterprises	Rice Cooker	Sanyo	17.Sep.02	20.Sep.02	3

Flat Iron	48
Rice Cooker	118
Refrigerator	52
Electric Fan	12
TOTAL	230



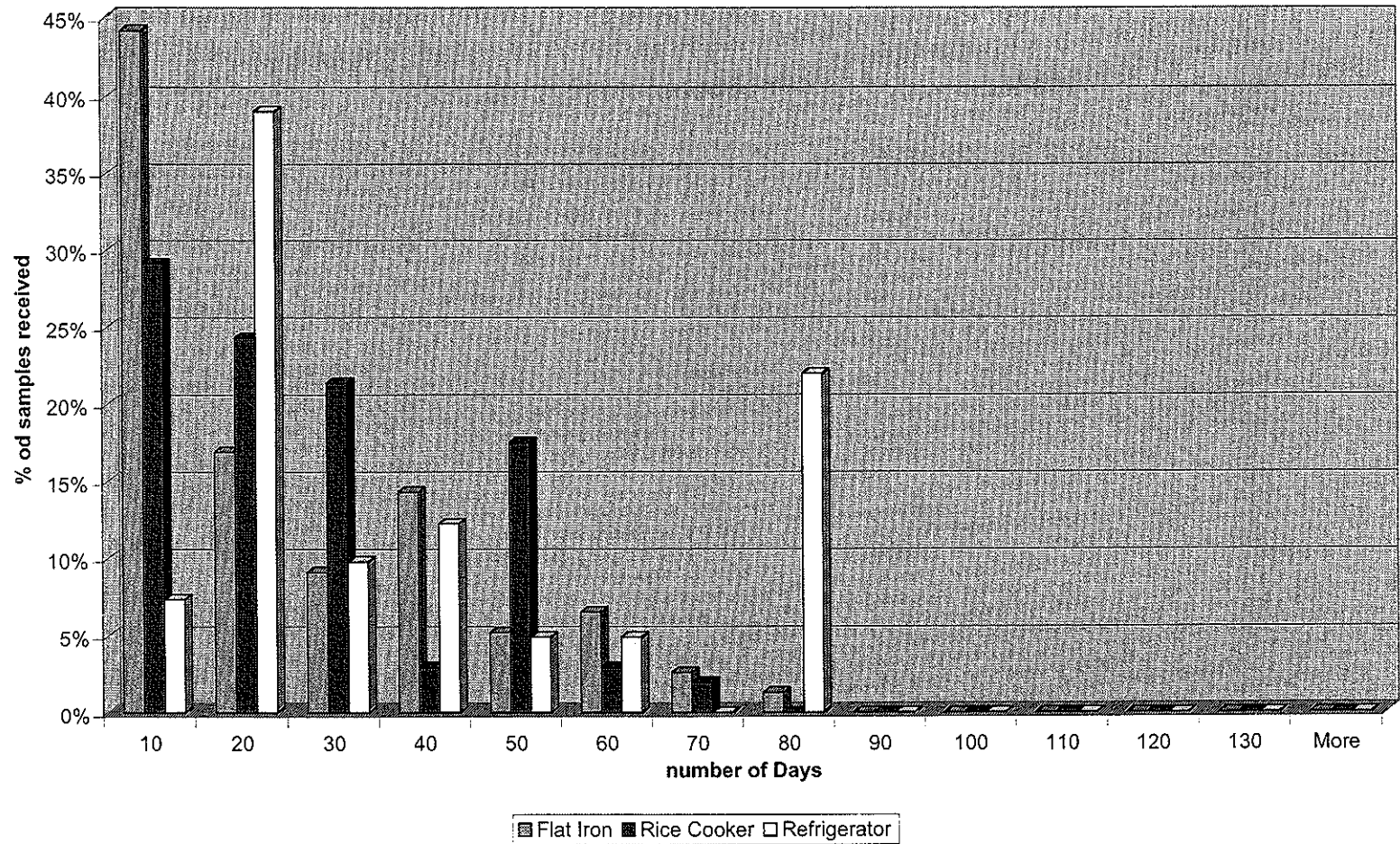
 Highlights indicate retest period.

Test Duration (1999)



Note:
 45% of flatiron samples tested in 30 days or less.
 28% of samples tested in 30 days or less.
 0% of refrigerator samples tested in 30 days or less.

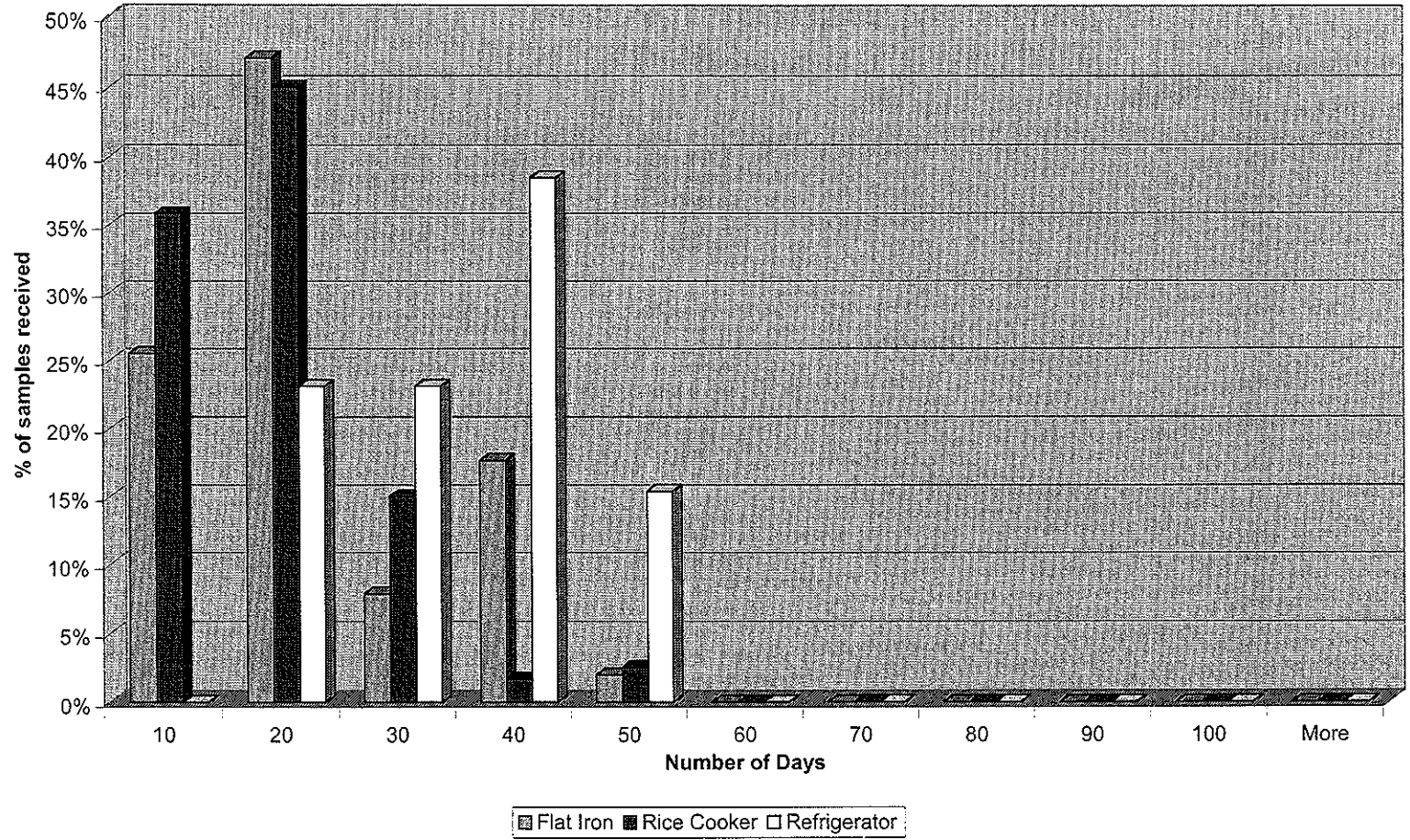
Test Duration (2000)



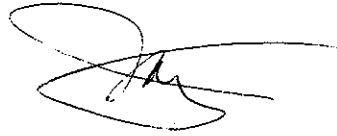
Note:
 70% of flatiron samples tested in 30 days or less.
 75% of rice cooker samples tested in 30 days or less.
 56% of refrigerator samples tested in 30 days or less.



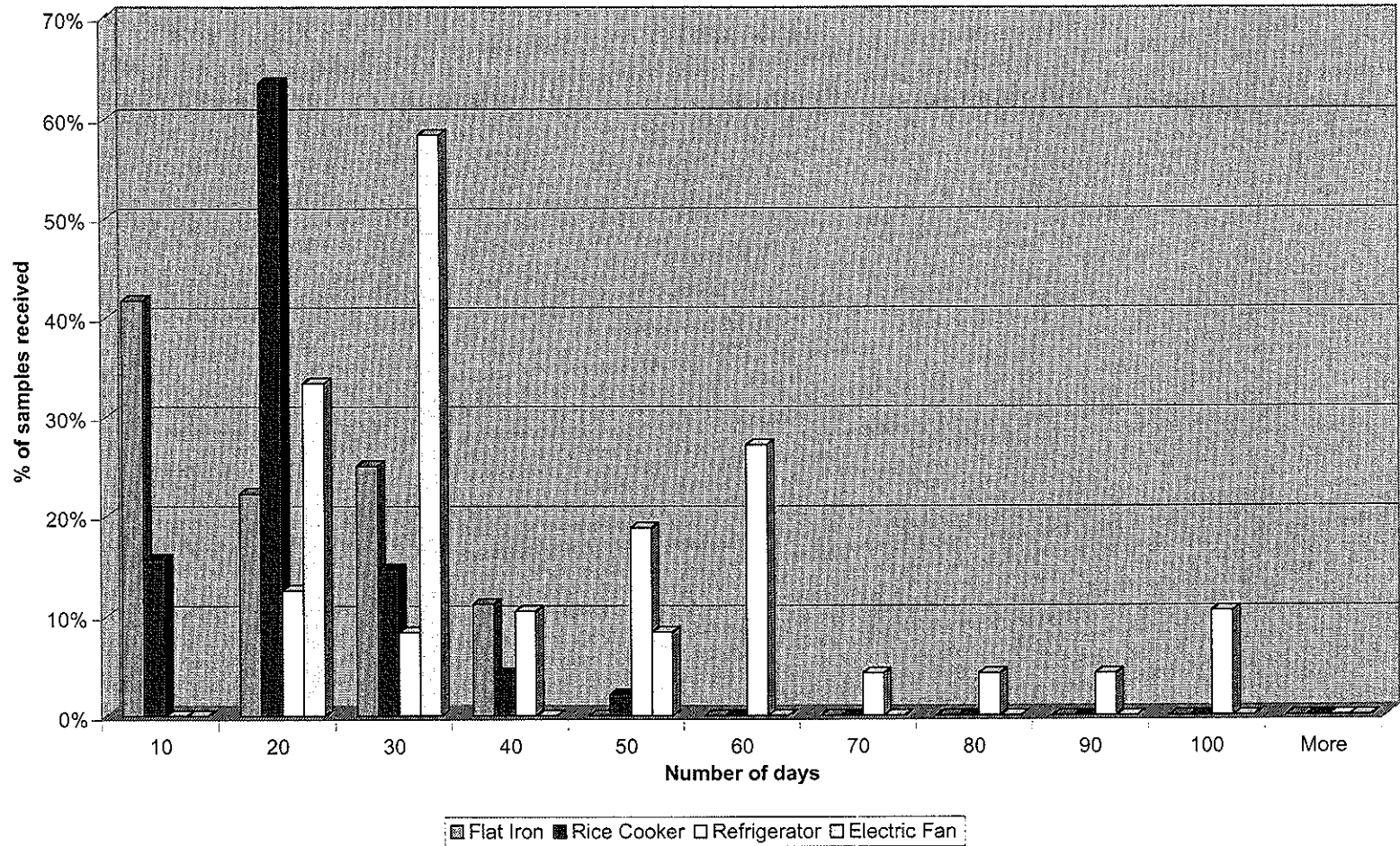
Test Duration (2001)



Note:
80% of flatiron samples tested in 30 days or less.
96% of rice cooker samples tested in 30 days or less.
46% of refrigerator samples tested in 30 days or less.



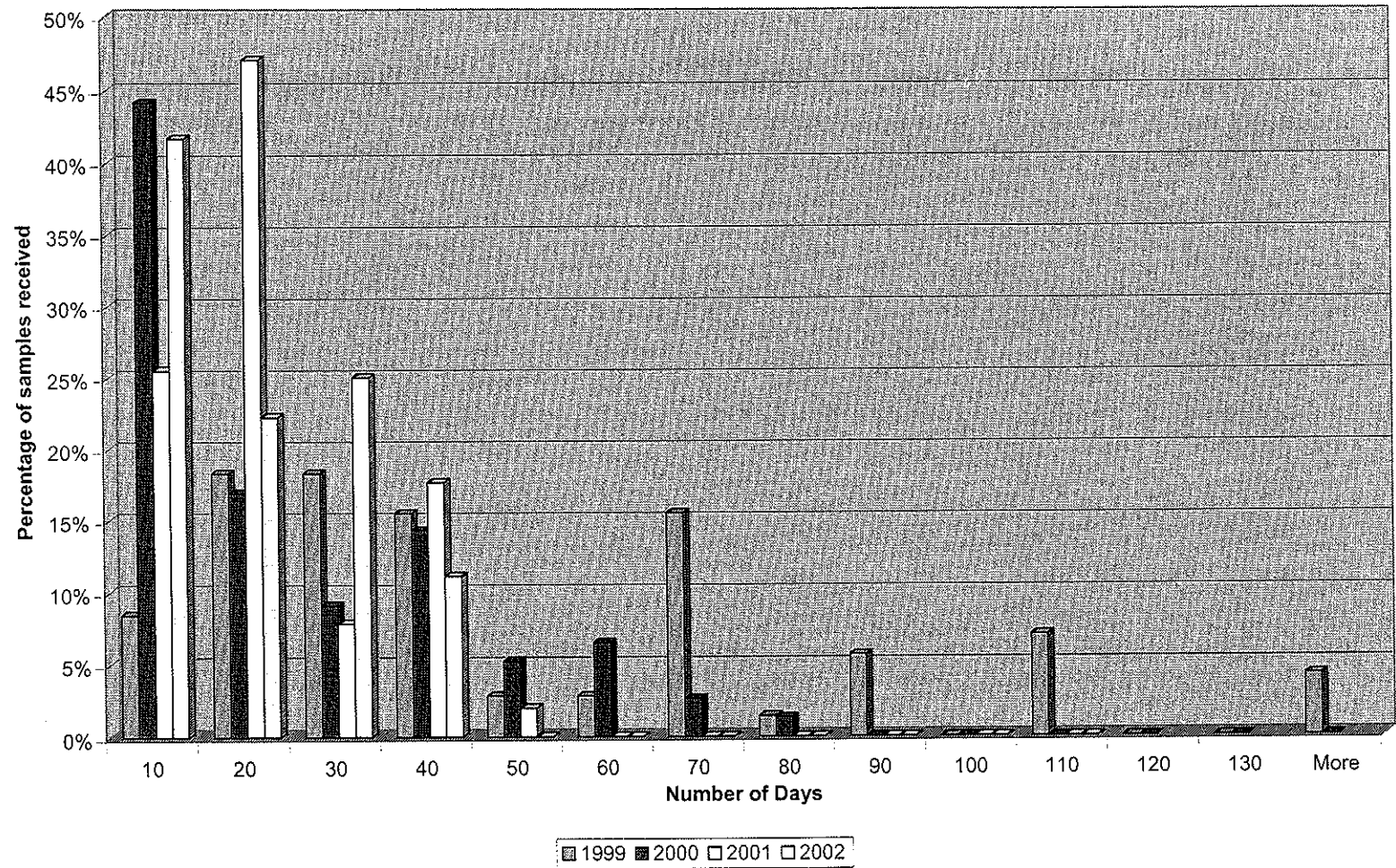
Test Duration (2002)



Note:
89% of flatiron samples tested in 30 days or less.
94% of rice cooker samples tested in 30 days or less.
21% of refrigerator samples tested in 30 days or less.
92% of electric fan samples tested in 30 days or less.



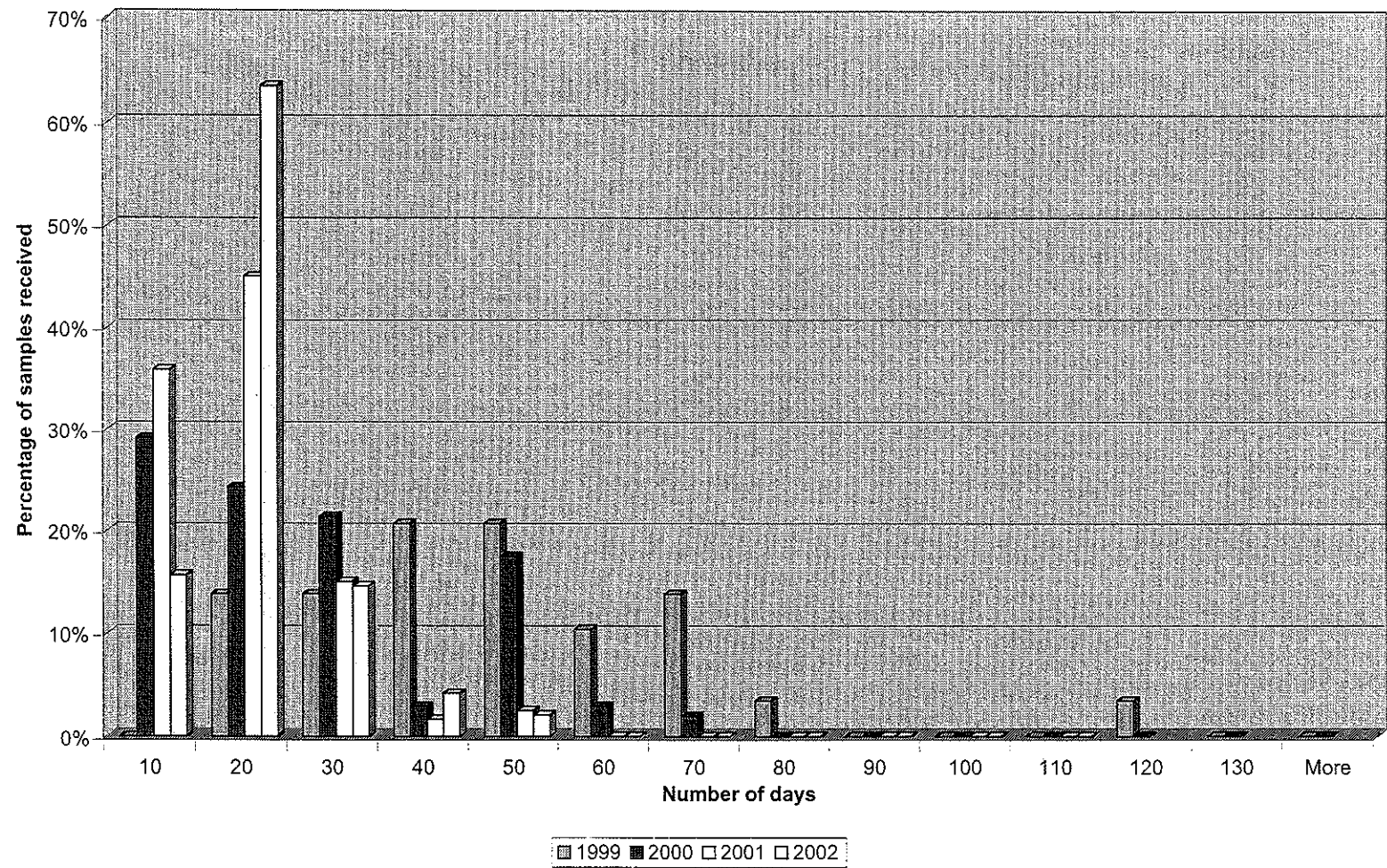
Flat Iron Full Test Duration (1999-2002)



Note:
Percentage of samples tested in 30 days or less:
1999 - 45%, 2000 - 70%, 2001 - 80%, 2002 - 84%

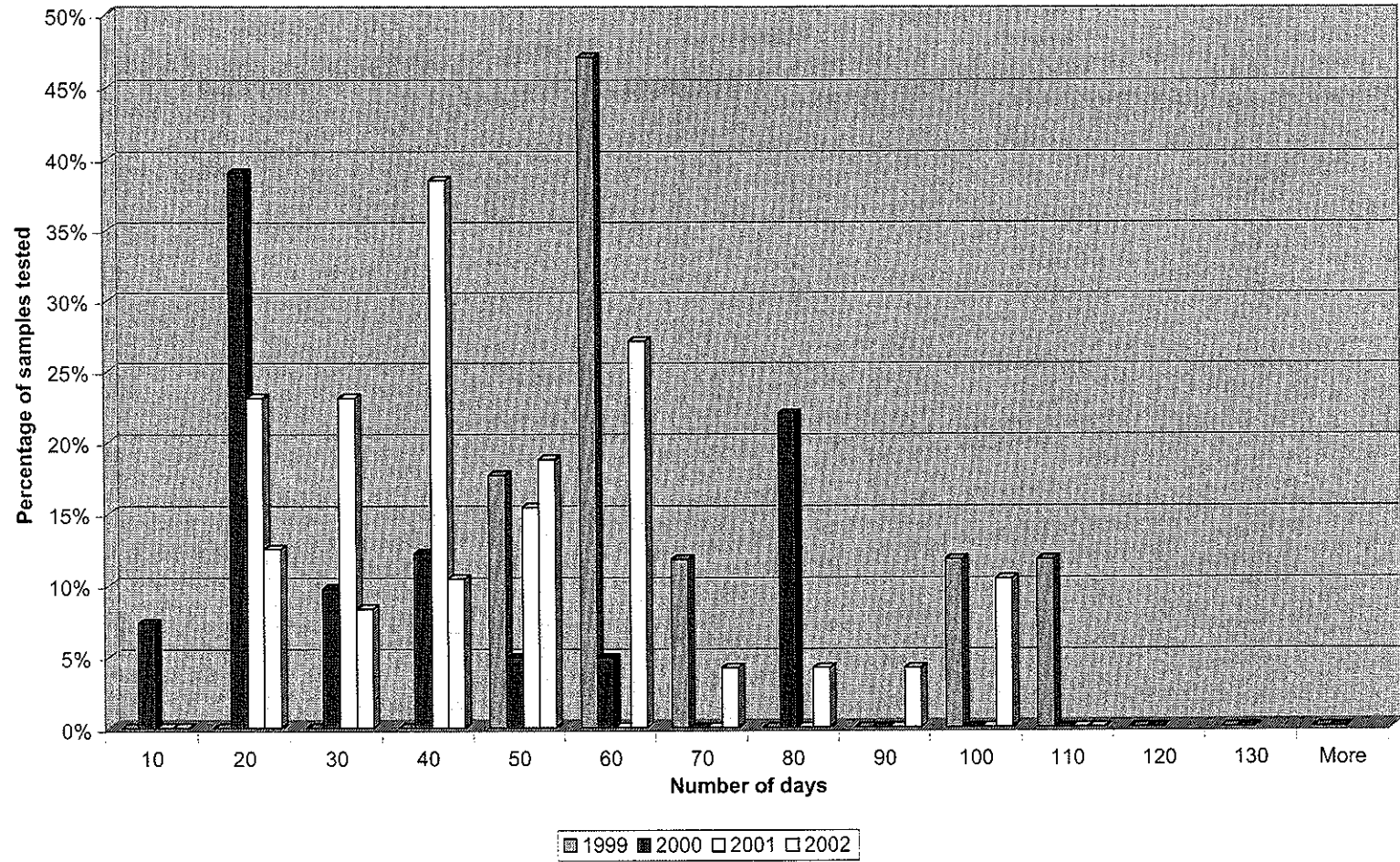


Rice Cooker Full Test Duration (1999 - 2000)



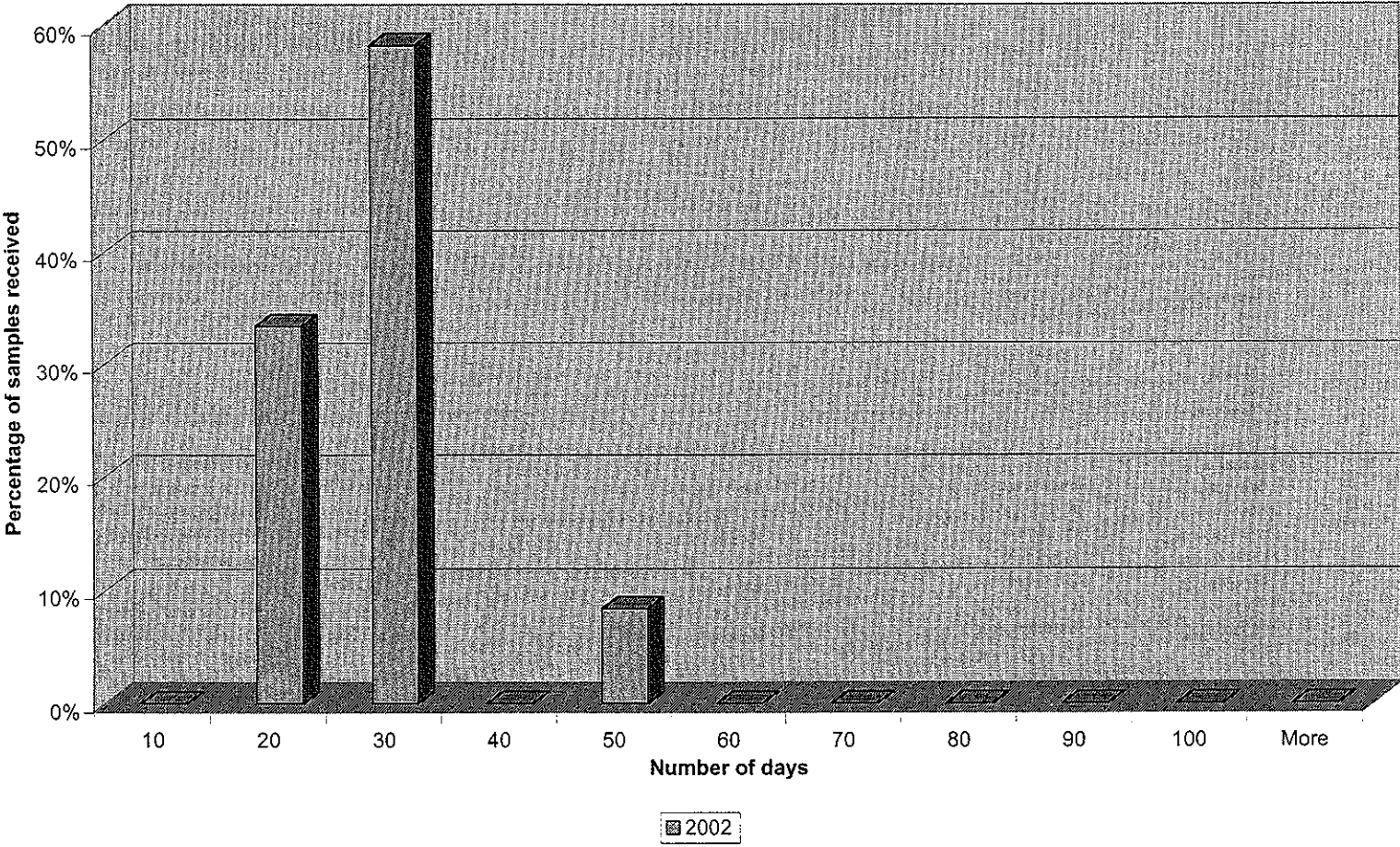
Note:
 Percentage of samples tested in 30 days or less:
 1999 - 28% , 2000 - 75% , 2001 - 96% , 2002 - 94%

Refrigerator Full Test Duration (1999-2002)



Note:
 Percentage of samples tested in 30 days or less:
 1999 - 0% , 2000 - 56% , 2001 - 46% , 2002 - 27%

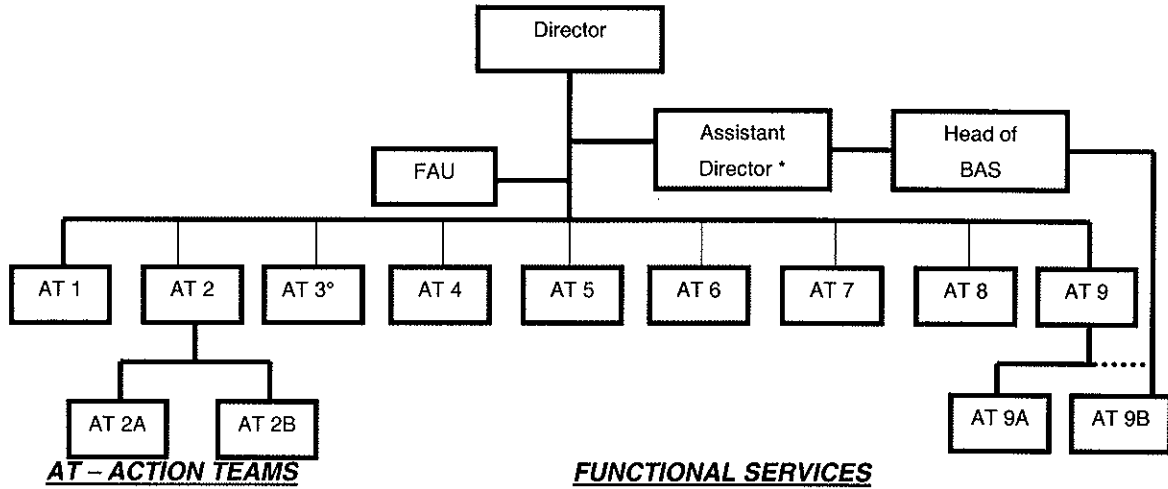
Electric Fan Full Test Duration (2002)



Summarized Results of PDM Indicators for October, 2002

Narrative Summary	Verifiable Indicators	Results								Remarks																																																																								
<p>Output 0 Project operation unit will be enhanced.</p>	<p>0- Personnel number, budget, control ability of management staff</p>	0 - Refer to the BPS Organizational Chart and Present BPSTC Organization								ANNEX13-1																																																																								
		0 - C/P allocation and plan for each position								ANNEX13-2																																																																								
		<table border="1"> <thead> <tr> <th data-bbox="672 454 913 534">Position \ JFY</th> <th colspan="2" data-bbox="913 454 1176 534">1999</th> <th colspan="2" data-bbox="1176 454 1422 534">2000</th> <th colspan="2" data-bbox="1422 454 1675 534">2001</th> <th colspan="2" data-bbox="1675 454 1926 534">2002</th> </tr> <tr> <th data-bbox="672 502 913 534"></th> <th data-bbox="913 502 1041 534">Plan</th> <th data-bbox="1041 502 1176 534">Actual Num.</th> <th data-bbox="1176 502 1303 534">Plan</th> <th data-bbox="1303 502 1422 534">Actual Num.</th> <th data-bbox="1422 502 1550 534">Plan</th> <th data-bbox="1550 502 1675 534">Actual Num.</th> <th data-bbox="1675 502 1803 534">Plan</th> <th data-bbox="1803 502 1926 534">Actual Num.</th> </tr> </thead> <tbody> <tr> <td data-bbox="672 534 913 566">Project Director</td> <td data-bbox="913 534 1041 566">1</td> <td data-bbox="1041 534 1176 566">1</td> <td data-bbox="1176 534 1303 566">1</td> <td data-bbox="1303 534 1422 566">1</td> <td data-bbox="1422 534 1550 566">1</td> <td data-bbox="1550 534 1675 566">1</td> <td data-bbox="1675 534 1803 566">1</td> <td data-bbox="1803 534 1926 566">1</td> </tr> <tr> <td data-bbox="672 566 913 598">Assistant Project Director</td> <td data-bbox="913 566 1041 598">1</td> <td data-bbox="1041 566 1176 598">1</td> <td data-bbox="1176 566 1303 598">1</td> <td data-bbox="1303 566 1422 598">1</td> <td data-bbox="1422 566 1550 598">1</td> <td data-bbox="1550 566 1675 598">1</td> <td data-bbox="1675 566 1803 598">1</td> <td data-bbox="1803 566 1926 598">1</td> </tr> <tr> <td data-bbox="672 598 913 630">Project Manager</td> <td data-bbox="913 598 1041 630">1</td> <td data-bbox="1041 598 1176 630">1</td> <td data-bbox="1176 598 1303 630">1</td> <td data-bbox="1303 598 1422 630">1</td> <td data-bbox="1422 598 1550 630">1</td> <td data-bbox="1550 598 1675 630">1</td> <td data-bbox="1675 598 1803 630">1</td> <td data-bbox="1803 598 1926 630">1</td> </tr> <tr> <td data-bbox="672 630 913 662">Testing Staff</td> <td data-bbox="913 630 1041 662">19</td> <td data-bbox="1041 630 1176 662">23</td> <td data-bbox="1176 630 1303 662">23</td> <td data-bbox="1303 630 1422 662">22</td> <td data-bbox="1422 630 1550 662">23</td> <td data-bbox="1550 630 1675 662">20</td> <td data-bbox="1675 630 1803 662">23</td> <td data-bbox="1803 630 1926 662">20</td> </tr> <tr> <td data-bbox="672 662 913 694">Administrative Staff</td> <td data-bbox="913 662 1041 694">5</td> <td data-bbox="1041 662 1176 694">6</td> <td data-bbox="1176 662 1303 694">6</td> <td data-bbox="1303 662 1422 694">6</td> <td data-bbox="1422 662 1550 694">6</td> <td data-bbox="1550 662 1675 694">6</td> <td data-bbox="1675 662 1803 694">5</td> <td data-bbox="1803 662 1926 694">5</td> </tr> <tr> <td data-bbox="672 694 913 726"><i>Total</i></td> <td data-bbox="913 694 1041 726">27</td> <td data-bbox="1041 694 1176 726">32</td> <td data-bbox="1176 694 1303 726">32</td> <td data-bbox="1303 694 1422 726">31</td> <td data-bbox="1422 694 1550 726">32</td> <td data-bbox="1550 694 1675 726">29</td> <td data-bbox="1675 694 1803 726">31</td> <td data-bbox="1803 694 1926 726">28</td> </tr> </tbody> </table>								Position \ JFY	1999		2000		2001		2002			Plan	Actual Num.	Plan	Actual Num.	Plan	Actual Num.	Plan	Actual Num.	Project Director	1	1	1	1	1	1	1	1	Assistant Project Director	1	1	1	1	1	1	1	1	Project Manager	1	1	1	1	1	1	1	1	Testing Staff	19	23	23	22	23	20	23	20	Administrative Staff	5	6	6	6	6	6	5	5	<i>Total</i>	27	32	32	31	32	29	31	28	ANNEX 14 ANNEX15
		Position \ JFY	1999		2000		2001		2002																																																																									
			Plan	Actual Num.	Plan	Actual Num.	Plan	Actual Num.	Plan	Actual Num.																																																																								
		Project Director	1	1	1	1	1	1	1	1																																																																								
Assistant Project Director	1	1	1	1	1	1	1	1																																																																										
Project Manager	1	1	1	1	1	1	1	1																																																																										
Testing Staff	19	23	23	22	23	20	23	20																																																																										
Administrative Staff	5	6	6	6	6	6	5	5																																																																										
<i>Total</i>	27	32	32	31	32	29	31	28																																																																										
0 - Though in financial difficulties, BPS and BPSTC have the necessary budget for operation. Furthermore, income has been obtained through their efforts. Refer to the Actual Budget and Income of BPS and BPSTC from 1993 to 2002 (September)								ANNEX 16																																																																										

BPS ORGANIZATIONAL CHART



AT – ACTION TEAMS

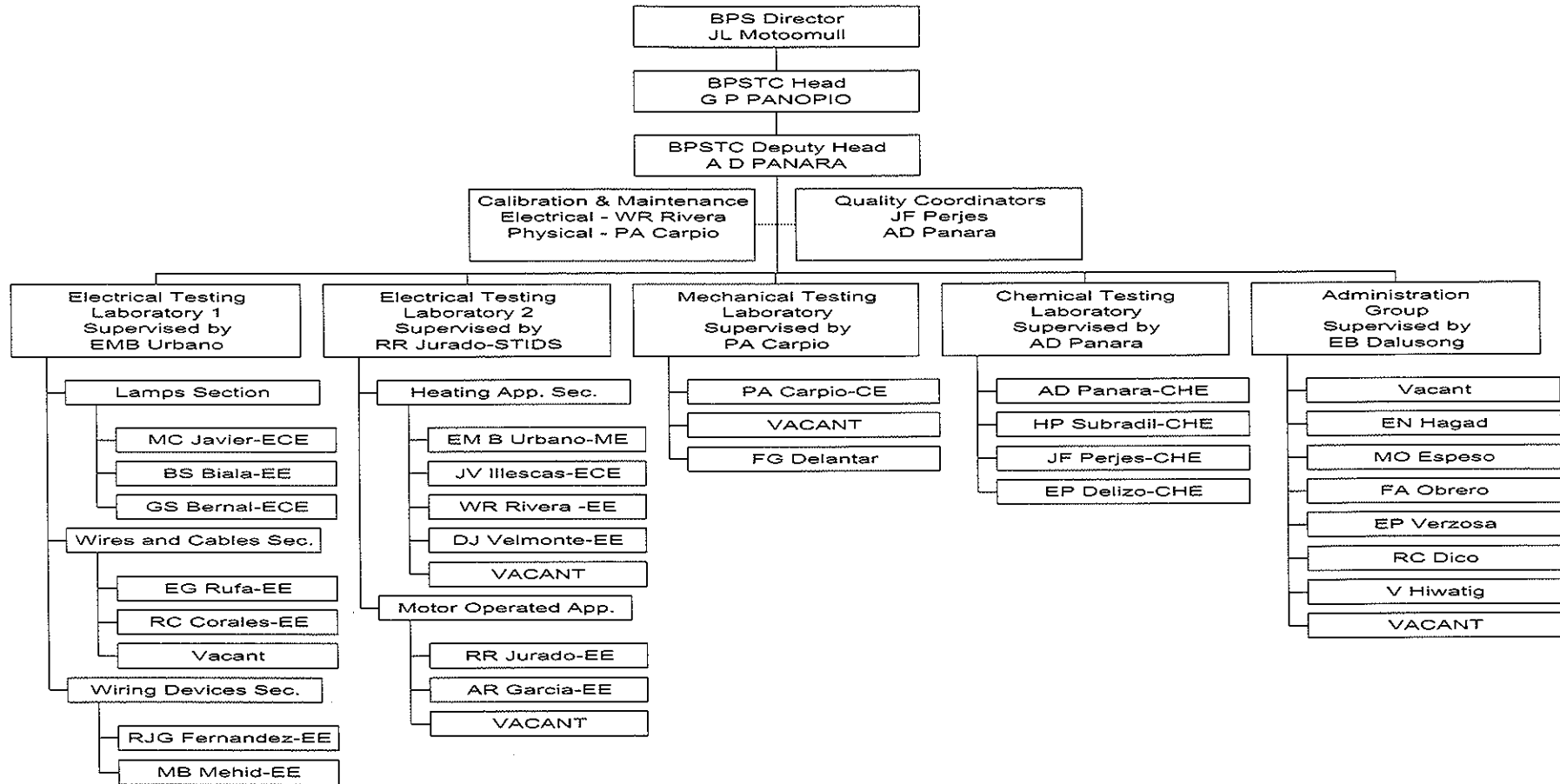
FUNCTIONAL SERVICES

AT 1	Standards Development	
AT 2	AT 2A Standards Promotion and Media Relations	
	AT 2B Information Services	
AT 3	BPS Testing Center	
AT 4	Product Certification	
AT 5	DAO 9 Enforcement and Consumer Affairs	
AT 6	Special Projects and NRSQA	
AT 7	International Relations	
AT 8	HRD	
AT 9	AT 9A Laboratory Accreditation	
	AT 9B BPS Accreditation Scheme (BAS) under the direct supervision and control of the Head of the Scheme	
FAU	Financial and Administrative Unit	

Legend * - Designated as the Head of BAS who shall have staff functions at BPS and line functions over the BAS.

- Director has direct supervision and control over that day-to-day operation
- Director has no direct supervision and control over that day-to-day operation. Relationship is more of a general administrative supervision.

ANNEX 13-2



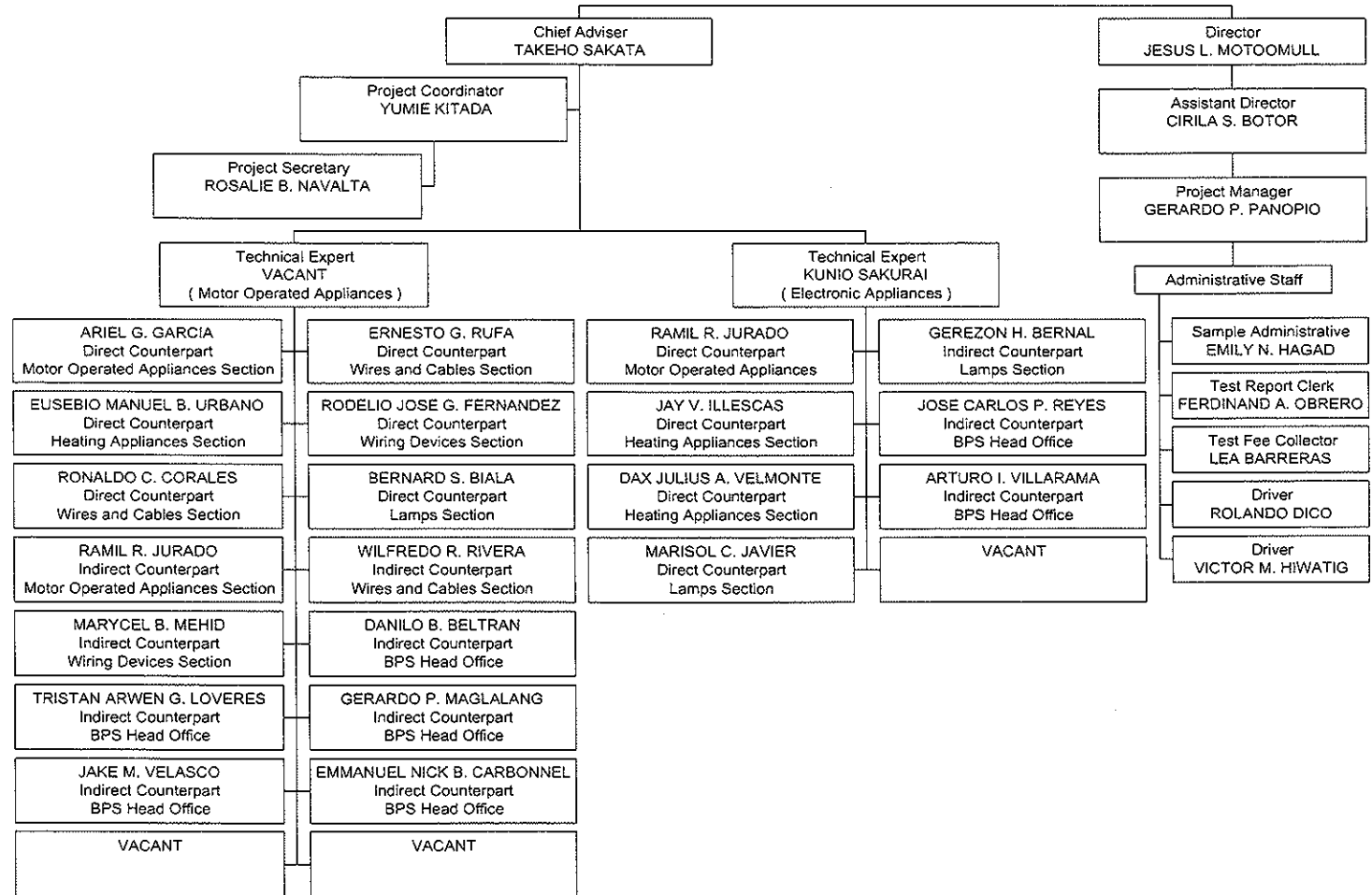
Present BPSTC Organization

Allocation Chart of C/P and Administrative Personnel

Position in the Project	Present Post	Japanese Fiscal Year	Japanese Fiscal Year					C/P Training in Japan	Training Year											
			Month																	
			1998	1999	2000	2001	2002													
			4	7	10	1	4	7	10	1	4	7	10	1	4	7	10	1		
			R/D 8.31																	
Project Director	Director of BPS	Mr. Jesus L. Motoomull	=====																	
Assistant Director	Assistant Director of BPS	Ms. Cirila S. Botor	=====																	
Project Manager	Head of BPSTC	Mr. Gerardo P. Panopio	=====					28 Feb 1999 ~ 13 Mar. 1999	JQA, JET											
Direct C/P	Motor Operated Appliances Section	Mr. Ramil R. Jurando	=====					10 Jan. 1999 ~ 20 Feb. 1999	JQA, JET											
	Heating Appliances Section	Mr. Dax Julius A. Velmonte	=====					31 Oct. 2000 ~ 8 Dec. 2000	JQA, JET											
	Heating Appliances Section	Mr. Jay V. Illescas	=====					31 Oct. 2000 ~ 8 Dec. 2000	JQA, JET											
	Lamps Section	Ms. Marisol C. Javier	=====					26 Sep. 2001 ~ 2 Nov. 2001	JQA, JET											
	Motor Operated Appliances Section	Mr. Ariel R. Garcia	=====					27 Oct. 1999 ~ 3 Dec. 1999	JQA, JET											
	Heating Appliances Section	Mr. Eusebio Manuel B. Urbano	=====					20 Jan. 1999 ~ 20 Feb. 1999	JQA, JET											
	Wires & Cables Section	Mr. Ernesto G. Rufa	=====					31 Oct. 2000 ~ 8 Dec. 2000	JQA, JET											
	Wiring Devices Section	Mr. Rodelio Jose G. Fernandez	=====					26 Sep. 2001 ~ 2 Nov. 2001	JQA, JET											
	Wires & Cables Section	Mr. Ronaldo C. Corales	=====					25 Sep. 2002 ~ 1 Nov. 2002	JQA, JET											
	Lamps Section	Mr. Bernard S. Biala	=====					26 Sep. 2001 ~ 2 Nov. 2001	JQA, JET											
Indirect C/P	Motor Operated Appliances Section	Mr. Johann R. Boranbon	=====					27 Oct. 1999 ~ 3 Dec. 1999	JQA, JET											
	Wiring Devices Section	Ms. Maricel B. Mehid	=====					25 Sep. 2002 ~ 1 Nov. 2002	JQA, JET											
	Lamps Section	Mr. Gereson H. Bernal	=====																	
	Wires & Cables Section	Mr. Wilfredo R. Rivera	=====					15 Feb. 1999 ~ 9 Apr. 1999	YOKOGAWA											
	Heating Appliances Section	Mr. Fernando P. Garrido III	=====					27 Oct. 1999 ~ 3 Dec. 1999	JQA, JET											
	BPS Head Office	Mr. Tristan Arwen G. Loverses	=====																	
	BPS Head Office	Mr. Danilo S. Beltran	=====																	
	BPS Head Office	Mr. Isagani C. Erna	=====																	
	BPS Head Office	Mr. Gerardo P. Maglalang	=====																	
	BPS Head Office	Mr. Emmanuel Nick B. Carbonell	=====																	
Budget Coordinator	Administrative	Ms. Esperanza B. Dalusong	=====																	
Sample Administrative	Administrative	Ms. Emily N. Hagad	=====																	
Test Report Clerk	Administrative	Mr. Ferdinand A. Obrero	=====																	
Testing Fee Collector	BPS Head Office	Ms. Lea barreras	=====																	
Driver	Driver	Mr. Roland Dico	=====																	
Driver	Driver	Mr. Victor M. Hiwating	=====																	

Length of Stay in the Project
Term of Training in Japan

JICA — BPS EEATP ORGANIZATIONAL CHART



The Actual Budget and Income of BPS and BPSTC from 1993 to 2002 (September)

1. Budget

(Unit: in Thousand Pesos)

		1993	1994	1995	1996	1997	1998	1999	2000	2001	2002
PERSONNEL SERVICES	BPS	6,408	6,620	5,562	9,860	9,822	9,822	12,949	17,039	17,039	19,127
	BPSTC		617	1,730	1,730	1,815	2,319	2,319	2,319	2,319	2,319
MAINTENANCE AND OPERATING EXPENSES	BPS	4,748	3,649	3,079	7,638	6,990	7,969	6,769	10,168	11,857	12,000
	BPSTC		2,856	5,642	5,642	7,967	7,030	7,733	8,506	6,817	6,817
CAPITAL/EQUIPMENT OUTLAY	BPS		0	0	0	630	0	0	0	0	-
	BPSTC		1,386			4,093	21,450	0	0	0	0
BPS Subtotal		11,156	10,269	8,641	17,498	17,442	17,791	16,591	27,207	28,896	31,127
BPSTC Subtotal		0	4,859	7,372	7,372	13,875	30,799	10,052	10,825	9,136	9,136
TOTAL		11,156	15,128	16,013	24,870	31,317	48,590	26,643	38,032	38,032	40,263

2. Income

(Unit: in Thousand Pesos)

		1993	1994	1995	1996	1997	1998	1999	2000	2001	2002
Certification Fee, Etc.*	BPS	2,185	5,397	6,792	11,327	9,594	6,177	7,852	9,599	5,981	2,849
Testing Fee**	BPSTC	600	839	1,020	2,048	2,360	3,567	4,756	6,264	4,774	4,796
	TOTAL	2,785	6,236	7,812	13,375	11,954	9,744	12,608	15,863	10,755	7,645
Percent increase of BPSTC income from previous year			39.83%	21.57%	100.78%	15.23%	51.14%	33.33%	31.71%	-23.79%	0.46%
Percent against total income		21.54%	13.45%	13.06%	15.31%	19.74%	36.61%	37.72%	39.49%	44.39%	62.73%

Note

* Certification fee, etc is as of June 2002

** Testing Fee is as of September 2002

Summarized Results of PDM Indicators for October, 2002

Narrative Summary	Verifiable Indicators	Results							Remarks
Output 1 1 The machinery and equipment related to electrical and electronic appliances testing will be provided, installed, operated and maintained properly.	1-1 Contents and number of equipment introduced	1--1							
		<i>Japanese Fiscal Year</i>	1998	1999	2000	2001	2002	<i>Total (Number of items)</i>	ANNEX18 ANNEX19-1 ANNEX19-2
		Testing Equipment (IEC 335)	28	23	7	2	1	61	
		Testing Equipment (IEC 65)	-	1	31	-	1	33	
		Testing Equipment (IEC 35 & 65)	-	-	-	8	-	8	
		Calibration	1	12	-	3	-	16	
		Others	3	6	5	-	-	14	
		IEC Standard	-	43	113	30	17	203	
		Technical Books	-	-	51	-	3	54	
		<i>Total (Number of items)</i>	32	85	207	43	22	389	
	1-2 Number and contents of manuals developed	1--2							
		Manuals						<i>Total (as of October)</i>	
		Instruction Manual Availability	Service Manual	Calibration Certificate					
159	109	43					311		
	1-3 Route to get spare parts and situation to secure spare parts	1--3							ANNEX 21-1
14 Suppliers (Refer to the ANNEX 21-1)									

ANNEX 18

PLAN							RESULT		
RD Item No.	Field	Equipment/Machinery	Qty	Availability (U: existing and to be used R: existing but to be replaced I: existing but to be increased in number P: to be procured)	If to be procured by Japan or Philippines	Current Name of Equipment / Machinery	Quantity Received	Year Donated	
<i>1. For IEC 335-1 (General)</i>									
1	IEC 335-1 Cl. 7	Petroleum Spirit	1	P	Philippines	same	1	1999	
2	IEC 335-1 Cl. 8	Standard Test Finger (w/ joint)	1	U					
3	IEC 335-1 Cl. 8	Standard Test Finger (w/out joint)	1	U					
4	IEC 335-1 Cl. 8	Test Pin	1	U					
5	IEC 335-1 Cl. 8	Test Probe	1	P	Japan	same	1set	1998	
6	IEC 335-1 Cl. 8	Push-pull Scale (Approx. 100N)	2	U					
7	IEC 335-1 Cl. 8	Storage Oscilloscope	1	P	Japan	Digital Oscilloscope	1	1998	
8	IEC 335-1 Cl. 10	Digital AC Power Meter	2	P	Japan	Digital Power Meter	2	1998	
9	IEC 335-1 Cl. 11	Thermal Recorder (30 -point)	2	P	Japan	Temperature Recorder	2sets	1998	
10	IEC 335-1 Cl. 11	Thermal Recorder (20-point)	3	P	Japan	Temperature Recorder	3sets	1998	
11	IEC 335-1 Cl. 11	Thermocouple (CA, 100m)	2	P	Japan	same	200m	1998	
12	IEC 335-1 Cl. 11	Thermocouple (IC, 100m)	2	P	Japan	same	200m	1998	
13	IEC 335-1 Cl. 11	Thermocouple (CC, 100m)	2	P	Japan	same	200m	1998	
14	IEC 335-1 Cl. 11	Black painted plywood (Test corner)	1	P	Philippines	same	1	1999	
15	IEC 335-1 Cl. 13	Leakage Current Meter	1	P	Japan	same	1set	1998	
16	IEC 335-1 Cl. 13	Dielectric Strength Tester	3	U					
17	IEC 335-1 Cl. 13	Isolating Transformer	1	P	Japan	same	1	1998	
18	IEC 335-1 Cl. 15	Walk-in environmental chamber	1	U	Japan	same	1	1998	
19	IEC 335-1 Cl. 15	Temperature/Humidity chamber	1	P					
20	IEC 335-1 Cl. 15	Vertical Rain Apparatus	1	Note 1					
21	IEC 335-1 Cl. 15	Splash Apparatus	1	Note 1					
22	IEC 335-1 Cl. 15	Spray Apparatus	1	P	Japan	Spray Nozzle	1set	1998	
23	IEC 335-1 Cl. 16	Insulation Resistance Meter	3	U					
24	IEC 335-1 Cl. 20	Stability test Apparatus	1	P	Philippines	same	1	1999	
25	IEC 335-1 Cl. 20	Weight	1	P	Philippines	same	1	1999	

PLAN						RESULT		
RD Item No.	Field	Equipment/ Machinery	Q ty	Availability (U: existing and to used R: existing but to be replaced I: existing but to be increased in number P: to be procured)	If to be procured by Japan or Philippines	Current Name of Equipment / Machinery	Quantity Received	Year Donated
26	IEC 335-1 Cl. 20	Push-pull Scale (Approx. 300N)	2	U				
27	IEC 335-1 Cl. 21	Impact Hammer	2	U				
28	IEC 335-1 Cl. 21	Polyamide board	1	P	Philippines	same	1	1999
29	IEC 335-1 Cl. 22	Torque Tester (Direct Plug-in)	1	P	Japan	same	1set	1998
30	IEC 335-1 Cl. 22	Test Nail	1	P	Japan	same	1set	1998
31	IEC 335-1 Cl. 25	Flexing Test Apparatus	1	P	Japan	same	1set	1998
32	IEC 335-1 Cl. 25	Torque Driver	2	U				
33	IEC 335-1 Cl. 27	Earth Continuity Tester	1	U				
34	IEC 335-1 Cl. 28	Torque Driver	1	U				
35	IEC 335-1 Cl. 29	Push-pull Scale (Approx. 2N)	1	P	Japan	same	1set	1998
36	IEC 335-1 Cl. 29	Outside Micrometer	3	U				
37	IEC 335-1 Cl. 29	Vernier Caliper	4	U				
38	IEC 335-1 Cl. 30	Ball Pressure Appartus	1	U				
39	IEC 335-1 Cl. 30	Temperature Pressure (for Ball Pressure)	1	U				
40	IEC 335-1 Cl. 30	Hot -Mandrel test Apparatus	1	U				
41	IEC 335-1 Cl. 30	Glow-wire Test Apparatus	1	U				
42	IEC 335-1 Cl. 30	Needle-Flame Apparatus	1	U				
43	IEC 335-1 Cl. 30	Arc Tracking Test Apparatus	1	U				
44	IEC 335-2 ETC.	AC Volt Meter (150V/300V)	3	U				
45	IEC 335-1 ETC.	AC Meter (100A)	3	U				
46	IEC 335-1 ETC.	AC Meter (5/25A)	3	U				
47	IEC 335-1 ETC.	AC Meter (2/10A)	3	U				
48	IEC 335-1 ETC.	AC Meter (1/5A)	3	U				
49	IEC 335-1 ETC.	AC Meter (2.5/5/10mA)	2	P	Japan	Ammeter	2	1998
50	IEC 335-1 ETC.	AC Volt and Ammeter	1	P	Japan	Volt-Ammeter	1	1998
51	IEC 335-1 ETC.	Slide Regulator	18	P	Japan	Variable Transformer	18	1998
52	IEC 335-1 ETC.	Switch Box	16	P	Philippines	same	16	1999
53	IEC 335-1 ETC.	Test Bench	16	P	Philippines	same	16	1999
54	IEC 335-1 ETC.	Test Table with Caster	4	P	Philippines	same	4	1999

PLAN						RESULT		
RD Item No.	Field	Equipment/ Machinery	Q ty	Availability (U: existing and to used R: existing but to be replaced I: existing but to be increased in number P: to be procured)	If to be procured by Japan or Philippines	Current Name of Equipment / Machinery	Quantity Received	Year Donated
55	IEC 335-1 ETC.	Digital Multimeter #1	1	P	Japan	Digital Multimeter	1	1998
56	IEC 335-1 ETC.	Digital Multimeter #2	4	P	Japan	Digital Multimeter	4	1998
57	IEC 335-1 ETC.	Thermohygraph	3	P	Japan	same	3sets	1998
<i>2. For the Priority Items of IEC 335</i>								
58	IEC 335-2-03 Cl. 2	Temperature Controller for Sole Plate	1	U				
59	IEC 335-2-03 Cl. 11	3-point Support	1	U				
60	IEC 335-2-03 Cl. 21	Drop Machine	1	U				
61	IEC 335-2-03 Cl. 25	Flexing Test Apparatus	1	P (IEC 335-1)				
62	IEC 335-2-06 Cl. 2	Standard Test Plan for Hob Elements	4	P	Philippines	same	4	1999
63	IEC 335-2-06 Cl. 8	Long Test Pin	1	P	Philippines	same	1set	1998
64	IEC 335-2-06 Cl. 9	Load for Rotating	1	P	Japan	same	1	2000
65	IEC 335-2-06 Cl. 10	Cotton Load (70cmx70cm, 10kg)	1	P	Philippines	same	1	2000
66	IEC 335-2-07 Cl. 11	Hot Water Equipment	1	P	Japan	same	1set	1998
67	IEC 335-2-07 Cl. 15	Standard Detergent	1	P	Philippines	same	1	2001
68	IEC 335-2-07 Cl. 22	Water Pressure Apparatus	1	P	Japan	same	1set	1998
69	IEC 335-2-07 Cl. 22	Tacho Meter	1	P	Japan	same	1	1998
70	IEC 335-2-11 Cl. 11	Temperature Probe	1	Note 2				
71	IEC 335-2-11 Cl. 22	Water Pressure Apparatus	1	P (IEC335-2-07)				
72	IEC 335-2-24 Cl. 11	Apparatus for Water Evaporation	1	P	Japan	same	1set	1998
73	IEC 335-2-35 Cl. 22	Splash Test Apparatus	1	P	Japan	same	1	1998
74	IEC 335-2-40 Cl. 10	Built-in Chamber	1	Note 3				
75	IEC 335-2-40 Cl. 19	30mA Circuit Breaker	1	P	Philippines	same	1	1999
<i>3. Others</i>								
76	Calibration Equipment	Universal Calibration	1	P	Japan	Multifunction Calibrator	1	1998
77	Calibration Equipment	Current Shunt	1	P	Philippines	same	1	1999
78	Calibration Equipment	Standard Resister	3	P	Philippines	same	3	1999

PLAN						RESULT		
RD Item No.	Field	Equipment/ Machinery	Qty	Availability (U: existing and to used R: existing but to be replaced I: existing but to be increased in number P: to be procured)	If to be procured by Japan or Philippines	Current Name of Equipment / Machinery	Quantity Received	Year Donated
121	IEC 65 Cl. 9	Dielectric Strength Test Apparatus	Share with IEC 335					
122	IEC 65 Cl. 9	Outside Micrometer	Share with IEC 335					
123	IEC 65 Cl. 9	Walk-in Environmental Test Chamber	Share with IEC 335					
124	IEC 65 Cl. 9	Scratch Test Apparatus	1	P	Japan	Scratch Test Apparatus	1unit	2000
125	IEC 65 Cl. 9	Test Chain	1	P	Japan	Test Probe 15 of IEC 61032	1set	2000
126	IEC 65 Cl. 9	Test Pin	Share with IEC 335					
127	IEC 65 Cl. 9	Test Probe	1	P	Japan	Test Probe C of IEC 610032	1set	2000
128	IEC 65 Cl. 9	Torque Driver	Share with IEC 335					
129	IEC 65 Cl. 9	Vernier Caliper	Share with IEC 335					
130	IEC 65 Cl. 9	Winding Wire Test Apparatus	1	P	Japan	Winding Apparatus (Twist/Cylinder)	2sets	2000
131	IEC 65 Cl. 9	Filter for Leakage Current	1	P		Leakage Current Meter Measuring Network for Leakage Current Meter	2sets	2000
132	IEC 65 Cl. 10	Dielectric Strength Test Instrument	1	P	Japan	Dielectric Strength test Jig	1set	2000
133	IEC 65 Cl. 10	Insulation Resistance Meter	Share with IEC 335					
134	IEC 65 Cl. 11	Spark Tester	1	P	Japan	same	1set	2000
135	IEC 65 Cl. 12	Bump Test Apparatus	1	Note 4				
136	IEC 65 Cl. 12	Impact Hammer	Share with IEC 335					
137	IEC 65 Cl. 12	Tumbling Barrel	1	U				
138	IEC 65 Cl. 12	Vibration Test Apparatus	1	Note 5	Japan	same	1set	2000
139	IEC 65 Cl. 14	2V-2F Test Apparatus	1	P	Japan	same	1set	2000
140	IEC 65 Cl. 14	Needle-Flame Test Apparatus	Share with IEC 335					
141	IEC 65 Cl. 14	Switch Test Apparatus (Endurance Test)	Share with IEC 335					
142	IEC 65 Cl. 15	Earth Continuity Tester	Share with IEC 335					
143	IEC 65 Cl. 15	Torque tester (Direct Plug-in)	Share with IEC 335					
144	IEC 65 Cl. 16	Flexing Test Apparatus	1	Note 6	Japan	same	1set	2000
145	IEC 65 Cl. 19	Tilt Test Apparatus	Share with IEC 335					

PLAN						RESULT		
RD Item No.	Field	Equipment/ Machinery	Qty	Availability (U: existing and to used R: existing but to be replaced I: existing but to be increased in number P: to be procured)	If to be procured by Japan or Philippines	Current Name of Equipment / Machinery	Quantity Received	Year Donated
146	IEC 65 Cl. 20	Flammability Test Apparatus	Share with	IEC 335				
147	IEC 65 App. A	Splash Apparatus	1	Note 7				
148	IEC 65 ETC.	AC Ammeter (20/100mA)	3	U				
149	IEC 65 ETC.	AC Ammeter (50/250mA)	3	U				
150	IEC 65 ETC.	AC Ammeter (100/500mA)	3	U				
151	IEC 65 ETC.	AC Ammeter (0.2/1A)	3	U				
152	IEC 65 ETC.	AC Ammeter (0.5/2.5 A)	3	U				
153	IEC 65 ETC.	AC Ammeter (1/5A)	3	U				
154	IEC 65 ETC.	AC Ammeter (2/10A)	3	U				
155	IEC 65 ETC.	AC Ammeter (5/25A)	3	U				
156	IEC 65 ETC.	AC Volt & Ammeter	Share with	IEC 335				
157	IEC 65 ETC.	DC Ammeter (0.1/0.3/1/3A)	3	P	Japan	same	3units	2000
158	IEC 65 ETC.	DC Ammeter (1/3/10/30A)	3	P	Japan	same	3units	2000
159	IEC 65 ETC.	Digital Multimeter #1	Share with	IEC 335				
160	IEC 65 ETC.	Digital Multimeter #2	Share with	IEC 335				
161	IEC 65 ETC.	Storage Oscilloscope	Share with	IEC 335				
162	IEC 65 ETC.	Variable Resistance Set	7	P	Japan	Resistance Load	7units	2000
163	IEC 65 ETC.	Push-pull Scale (Approx. 100N)	Share with	IEC 335				
164	IEC 65 ETC.	Push-pull Scale (Approx. 300N)	Share with	IEC 335				
165	IEC 65 ETC.	Torque Driver #1	Share with	IEC 335				
166	IEC 65 ETC.	Torque Drive #2	Share with	IEC 335				
167	IEC 65 ETC.	Slide Regulator	Share with	IEC 335				
168	IEC 65 ETC.	Switch Box	Share with	IEC 335				
169	IEC 65 ETC.	Test Bench	Share with	IEC 335				
170	IEC 65 ETC.	Test table with Caster	Share with	IEC 335				
<i>6. For Optional Items of IEC 65</i>								
171	IEC 65 Cl. 6	Laser Measuring Apparatus	1	Note 8				
172	IEC 65 Cl. 6	X-ray Measuring Apparatus	1	P	Japan	same	1set	2000
173	IEC 65 Cl. 10	Surge Test Apparatus	1	P	Japan	same	1set	2000
174	IEC 65 Cl. 12	Test Plug for Antenna	1	P	Japan	same	1set	2000

PLAN						RESULT			
RD Item No.	Field	Equipment/ Machinery	Q ty	Availability (U: existing and to used R: existing but to be replaced I: existing but to be increased in number P: to be procured)	If to be procured by Japan or Philippines	Current Name of Equipment / Machinery	Quantity Received	Year Donated	
175	IEC 65 Cl. 14	Shunt Resistor	2	P	Japan	same	2pcs.	2000	
176	IEC 65 Cl. 18	CRT Test Apparatus (Steel Ball)	1	P	Japan	same	1set	2000	
177	IEC 65 Cl. 18	CRT Test Apparatus (Test Box)	1	P	Philippines	same	1unit	2002	
178	IEC 65 ETC.	Color-Bar Generator	1	P	Japan	Color Pattern Generator	1set	2000	
179	IEC 65 ETC.	Electrostatic Voltmeter	1	P	Japan	same	1unit	2000	
180	IEC 65 ETC.	High Voltage Probe	1	P	Japan	same	1set	2000	
181	IEC 65 ETC.	Low Resistance Meter	1	P	Japan	same	1unit	2000	
182	IEC 65 ETC.	Oscilloscope	1	P	Japan	same	1set	2000	
183	IEC 65 ETC.	PAL Generator	1	P	Japan	Audio Generator	1set	2000	
184	IEC 65 ETC.	Random Noise Generator & Filter	1	P	Japan	Pink Noise Generator	1set	2000	
185	IEC 65 ETC.	Resistance Load Set	2	P	Japan	Resistance Load Set (Dummy Load)	1set	2000	
186	IEC 65 ETC.	True RMS AC Voltmeter / AC Ammeter	1	P	Japan	Digital Multitester	1set	2000	
						ADDITIONAL			
						RD Item No.	Std. No.	Equipment	Quantity
						<i>Year donated : 1999</i>			
						Addition	Calibration Equipment: Accessory for Universal Calibrator WAVETEK Model 9100	Option 135 Insulation/Continuity Tester calibration Module	1set
						Addition		Option PWR Power Meter calibration Option	1set
						Addition		Option 65 Ruggedized Transit Case	1set

						Addition		Option 200 Current Coils	1set	
						Addition		Option 100 High Stability Crystal Reference	1set	
						Addition	Calibration Equipment: Accessory for Universal Calibrator WAVETEK Model 9100	PORTCAL II Windows Automated Inventory Management	1set	
						Addition		Option 10 Black 256-K Kyte Flash Card	1set	
						Addition		Option 30 Black 257 K-Byte Battery	1set	
						Addition		Backed SRAM Card	1set	
						Addition		Option 20 GPIB Interface and Security	1set	
						Addition			Toshiba Satellite 2060CDS Notebook Computer	1unit
						Addition			Eiki V-500 Visual System Presenter	1unit
								Eiki LC-XNB1 Notebook Projector	1unit	
						Addition		Spare Lamp for Eiki LC-XNB1 Projector	1pc	
						Addition		Hard Carrying Case	1pc	
						Addition		Xerox Docu Center 400 ST	1pkg	
						Addition		Nozzule A Liquid	1set	
						Addition		Nozzule B Liquid	1set	
							<i>Year donated : 2000</i>			
						Addition	IEC 335-2-80(P)	Hardness Tester	1unit	
						Addition	IEC 65 (O,P)	Variable Resister for Power Measure	1unit	
						Addition	IEC 65 (O,P)	Test Probe D of IEC 61032	1set	
						Addition	IEC 65 (O)	DC Power Supply	1set	

4/2

						Addition		Wireless Guide System (Transmitter)	1unit
						Addition		Wireless Guide System (Receiver)	40units
						Addition		Battery Charger	1unit
						Addition		FTIR (Composition Analyzer)	1set
						Addition		ATR of Polymerter	1set
						<i>Year donated : 2001</i>			
						Addition	IEC65&335 (P&O)	Programmable Controlliers (30ch)	1
						Addition	IEC65&335 (P&O)	Programmable Controlliers (40ch)	1
						Addition	Calibration	RF Power Meter	1
						Addition	Calibration	Dry Block Calibration System	1
						Addition	IEC335-1&65 (P&O)	Digital AC Power Meter	1
						Addition	IEC335-1&65 (P&O)	Thermal Recorder (30p)	1
						Addition	IEC335-1&65 (P&O)	Thermal Recorder (20p)	1
						Addition	IEC65&335(P&O)	Low Resistance Meter	1
						Addition	Calibration	Daqstation DX200 (30ch)	1
						Addition	IEC65&335(P&O)	Hot Line Coil Resistance Temp. Meter	1
						Addition	IEC65&335(P&O)	Portable Recorder (for Hot Line)	1



	PLANNED	RESULT	ADDITIONAL
Equipments donated by Japanese side	64	64	38
Equipments donated by Philippine side	30	30	0

