

Figure II-1-3-(16) Geochemical map of Pb (ppm) in stream sediment samples (1:500,000)

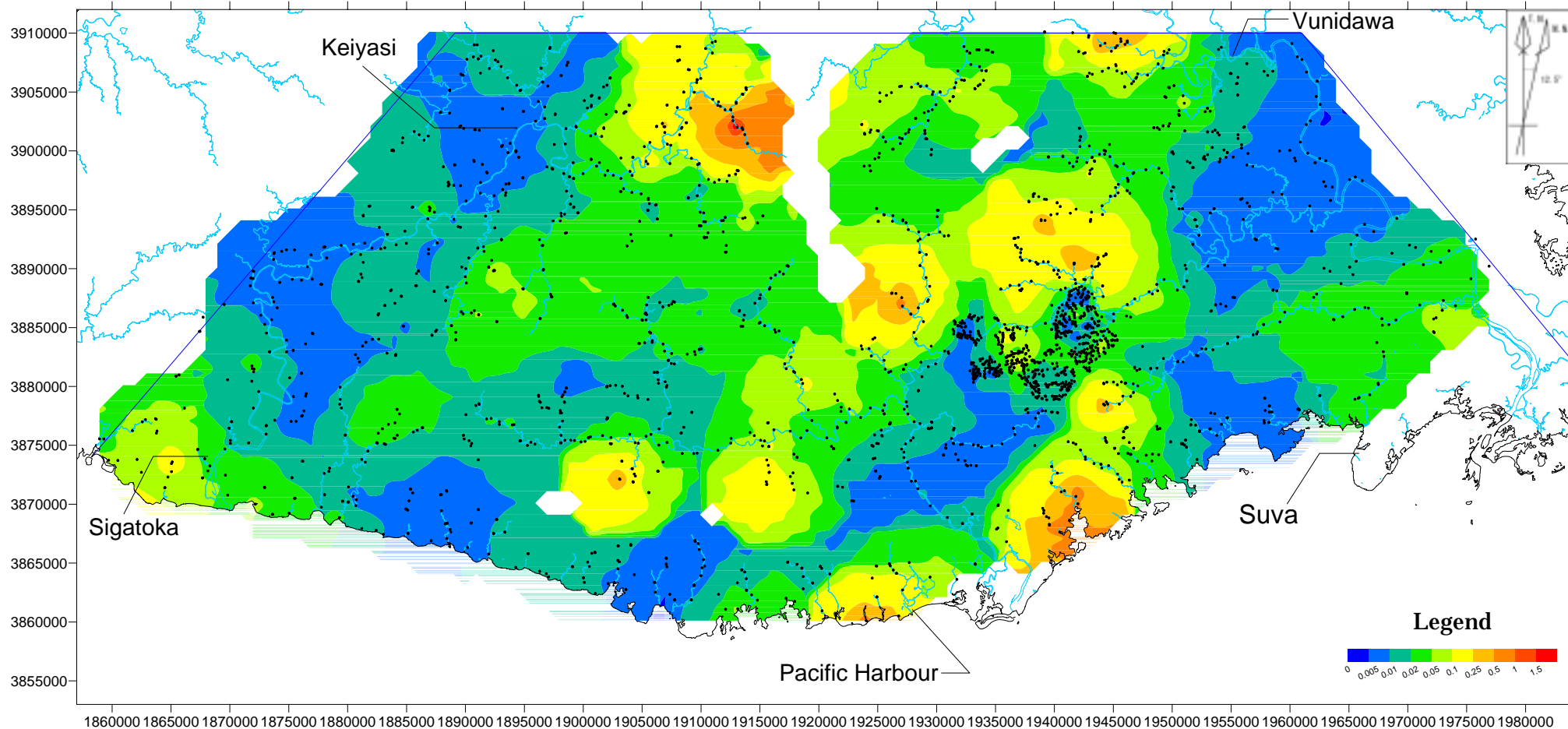


Figure II-1-3-(17) Geochemical map of S (%) in stream sediment samples (1:500,000)

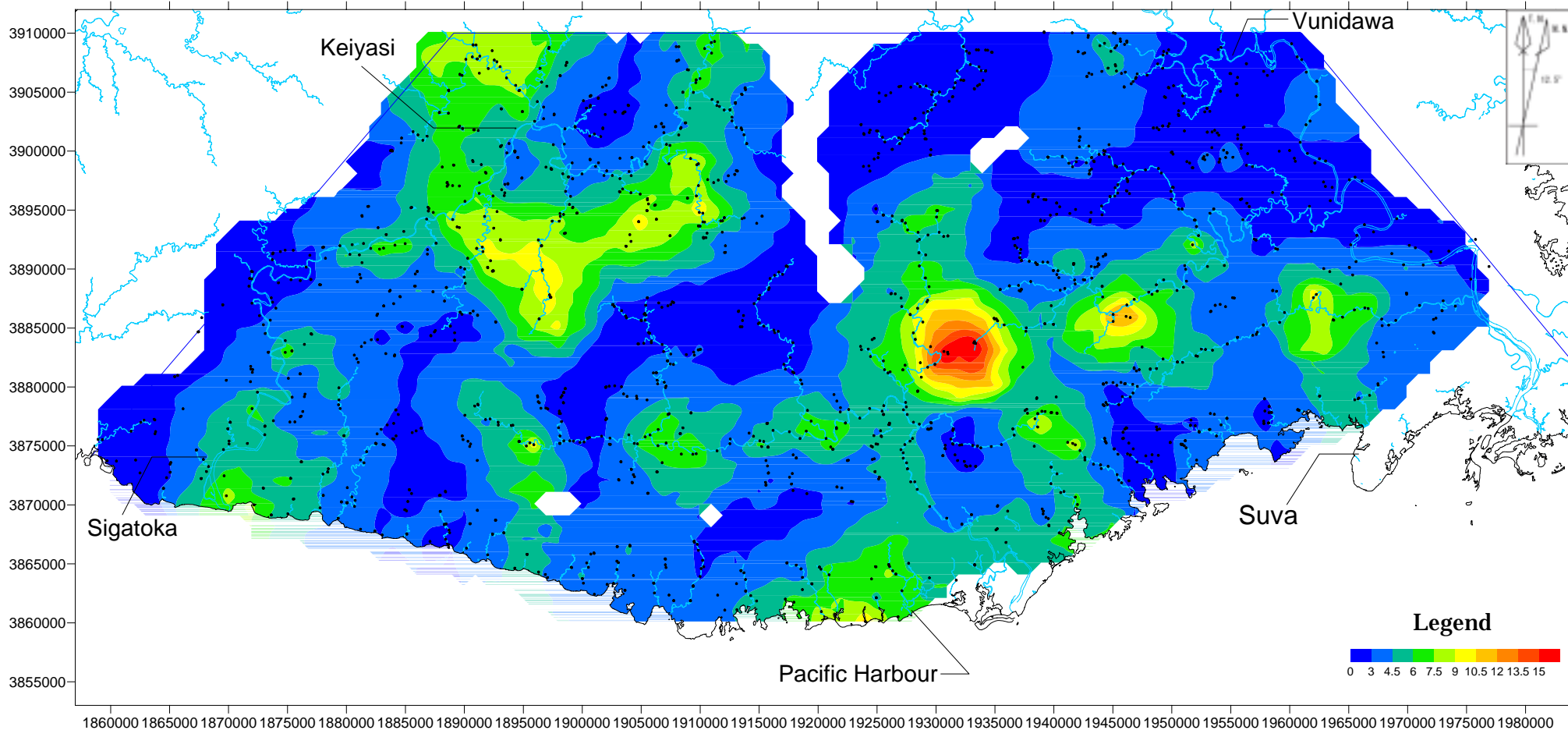


Figure II-1-3-(18) Geochemical map of Sb (ppm) in stream sediment samples (1:500,000)

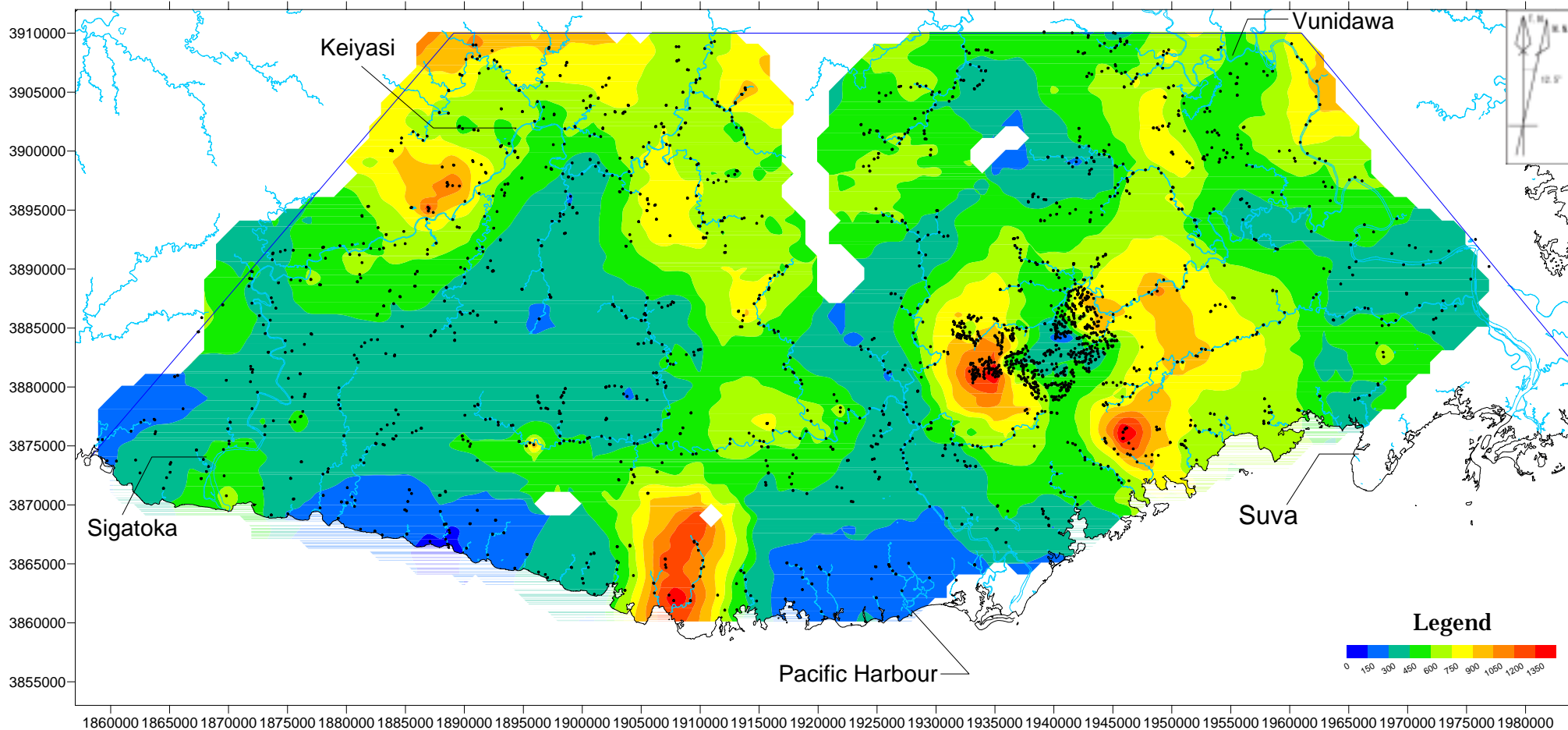


Figure II-1-3-(19) Geochemical map of V (ppm) in stream sediment samples (1:500,000)

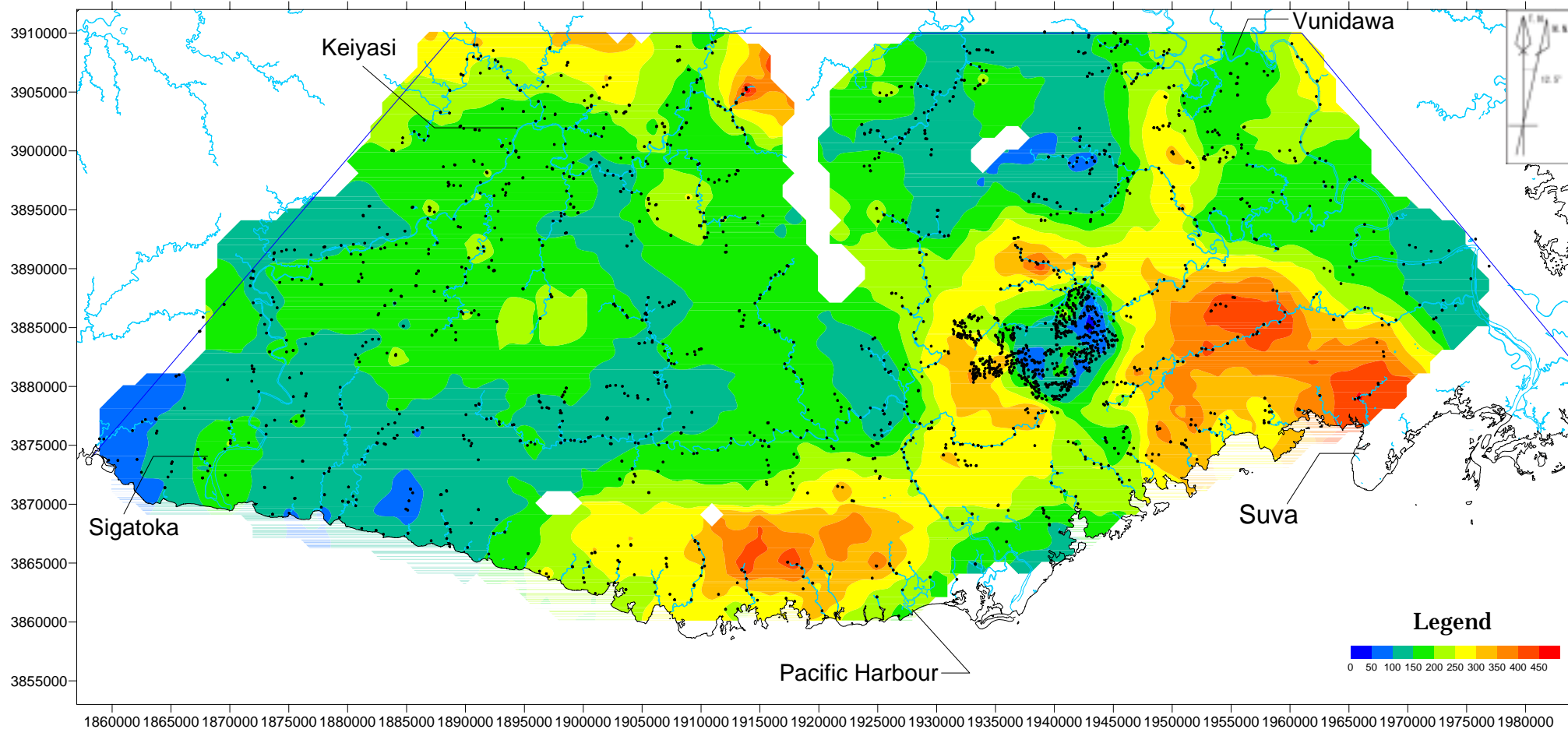


Figure II-1-3-(20) Geochemical map of Zn (ppm) in stream sediment samples (1:500,000)