

- Soil Geochemical survey area
- Rock sample
- Sericite
- Pyrophyllite
- Chlorite
- Smectite
- Kaolinite
- ▲ Fault
- Pyritization
- Moderate
- Intense
- Alteration Zone
- Sericite-kaoline dominant zone
- Chlorite dominant zone

Fig.5-64 Mineralized and Alteration Zones of the Tempursari District

Fig.5-64 Mineralized and Alteration Zones of the Tempursari District

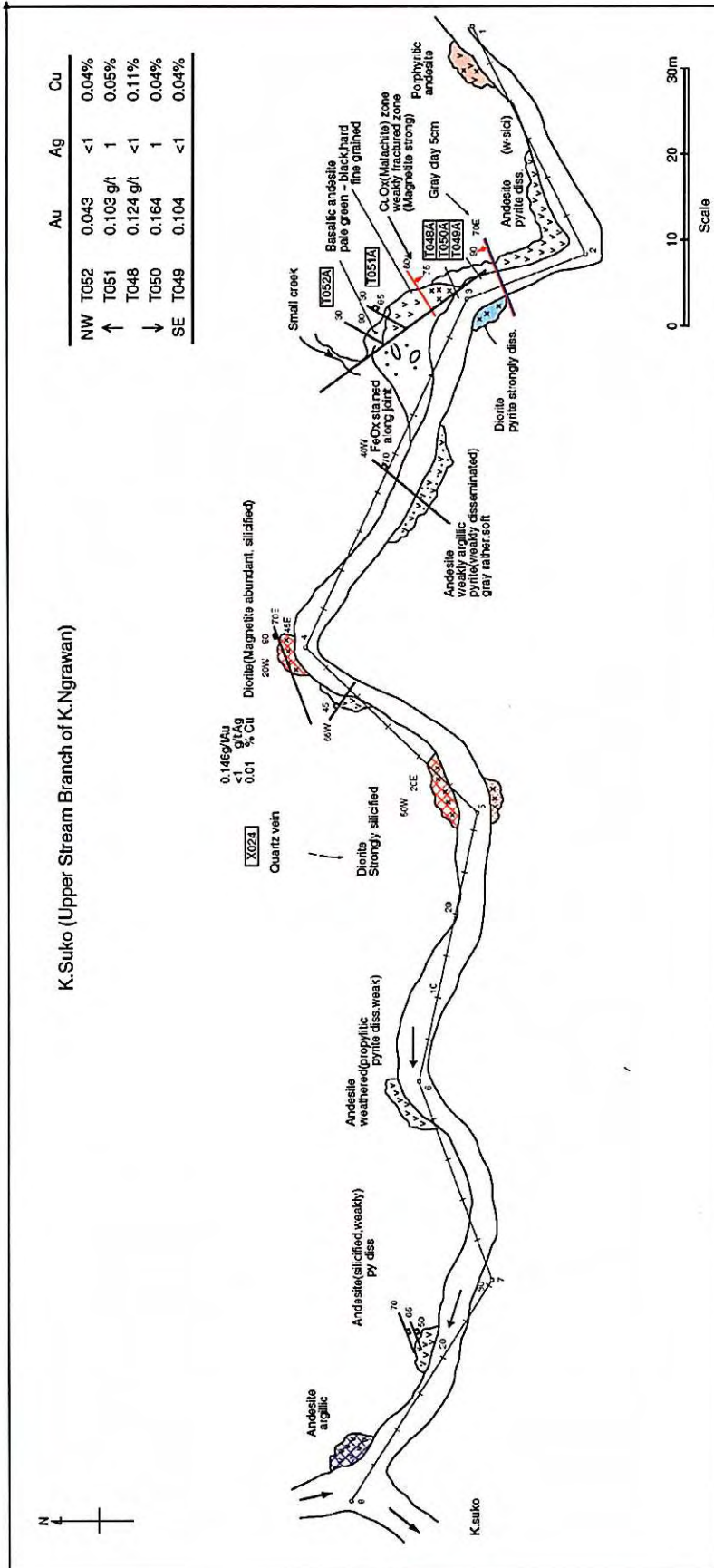


Fig.5-65 Sketch of the Mineralized zones along the K. Ngrawan in the Tempurusari District.

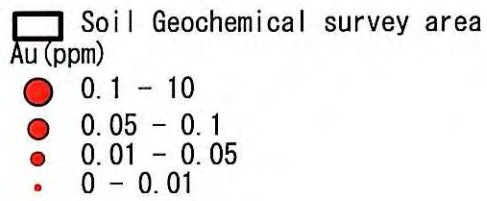
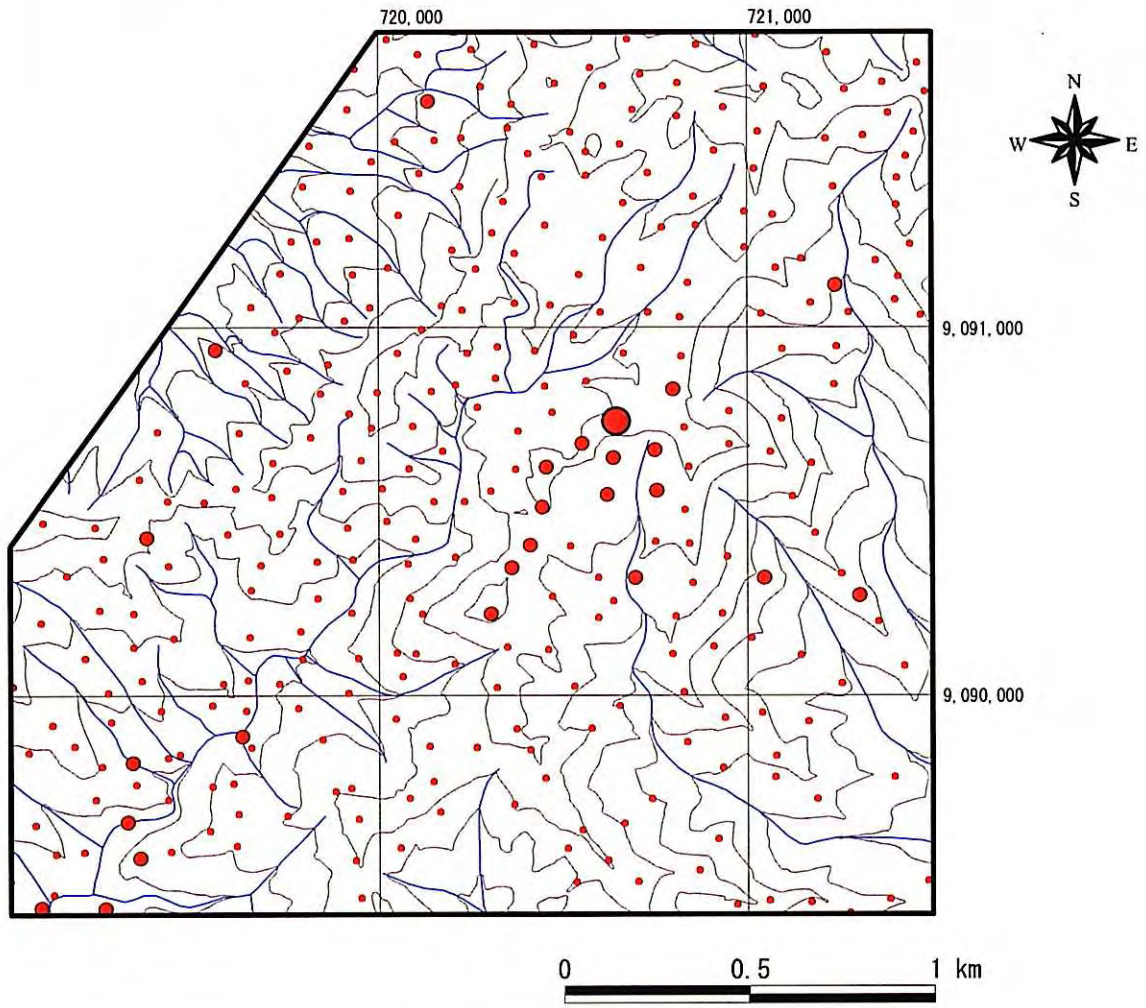


Fig.5-66 Geochemical Anomaly of Soil Samples in the Tempursari District (Au)

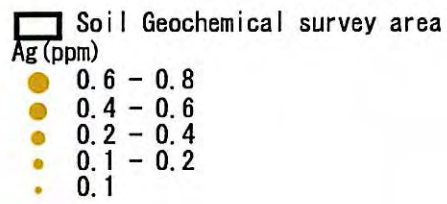
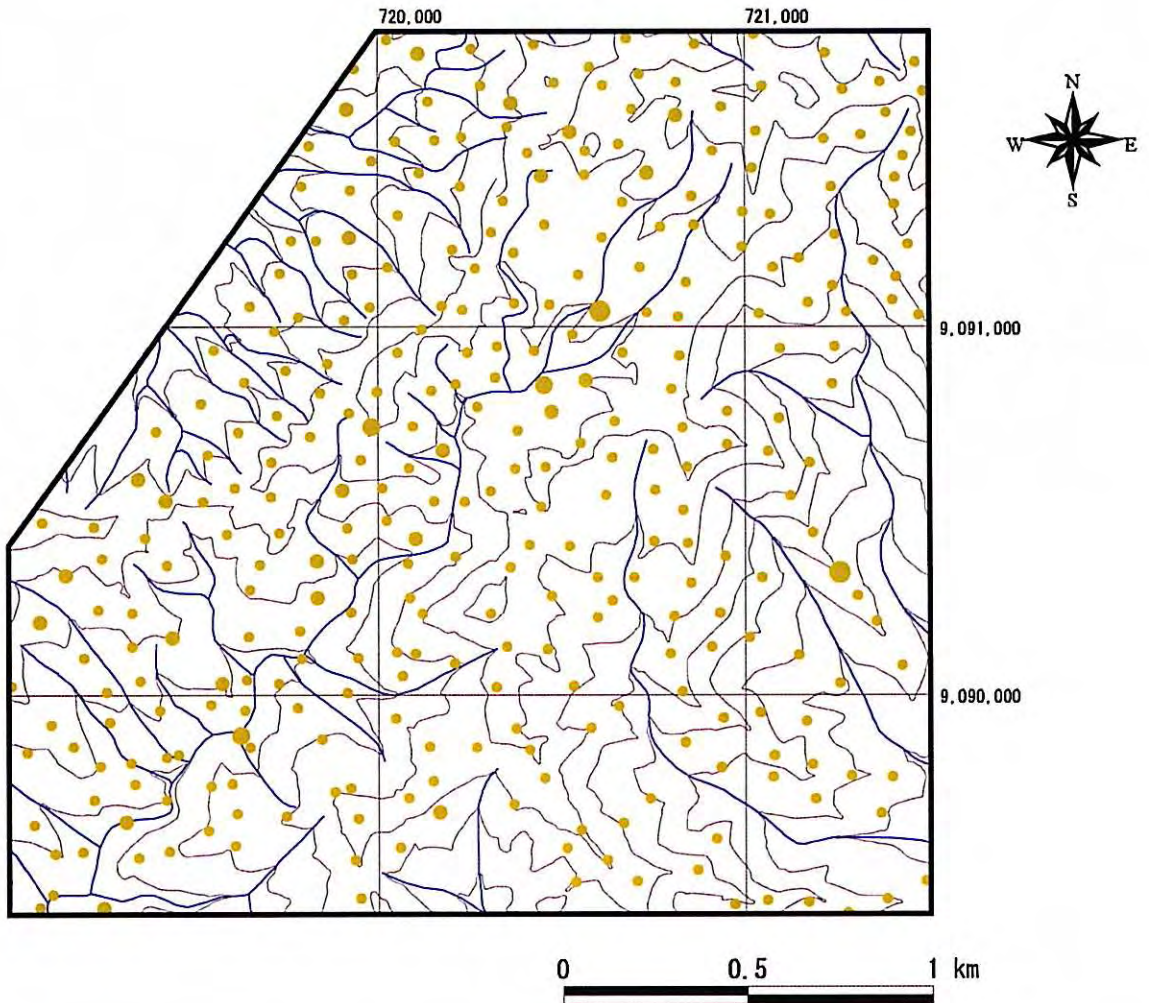


Fig.5-67 Geochemical Anomaly of Soil Samples in the Tempursari District (Ag)

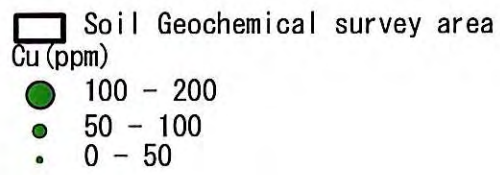
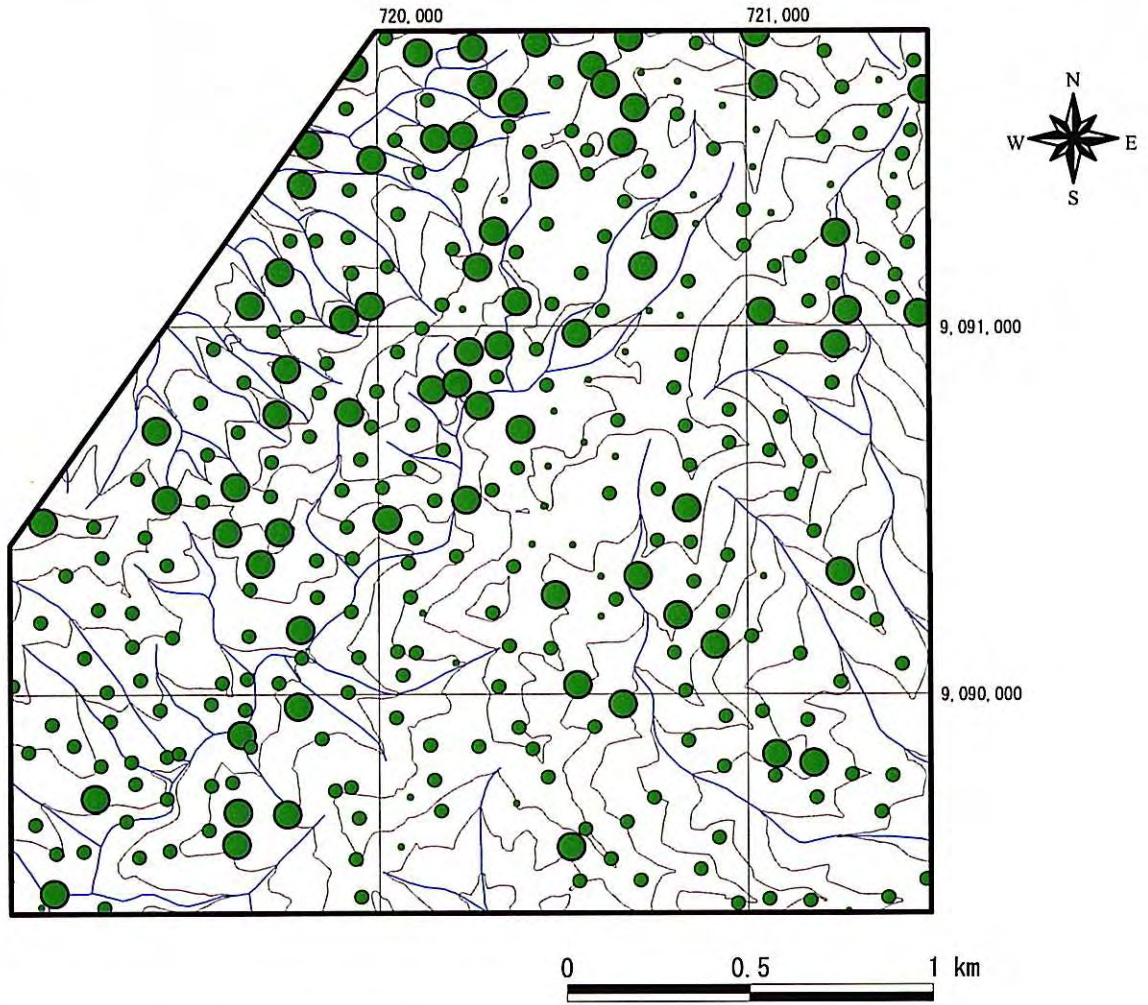


Fig.5-68 Geochemical Anomaly of Soil Samples in the Tempursari District (Cu)

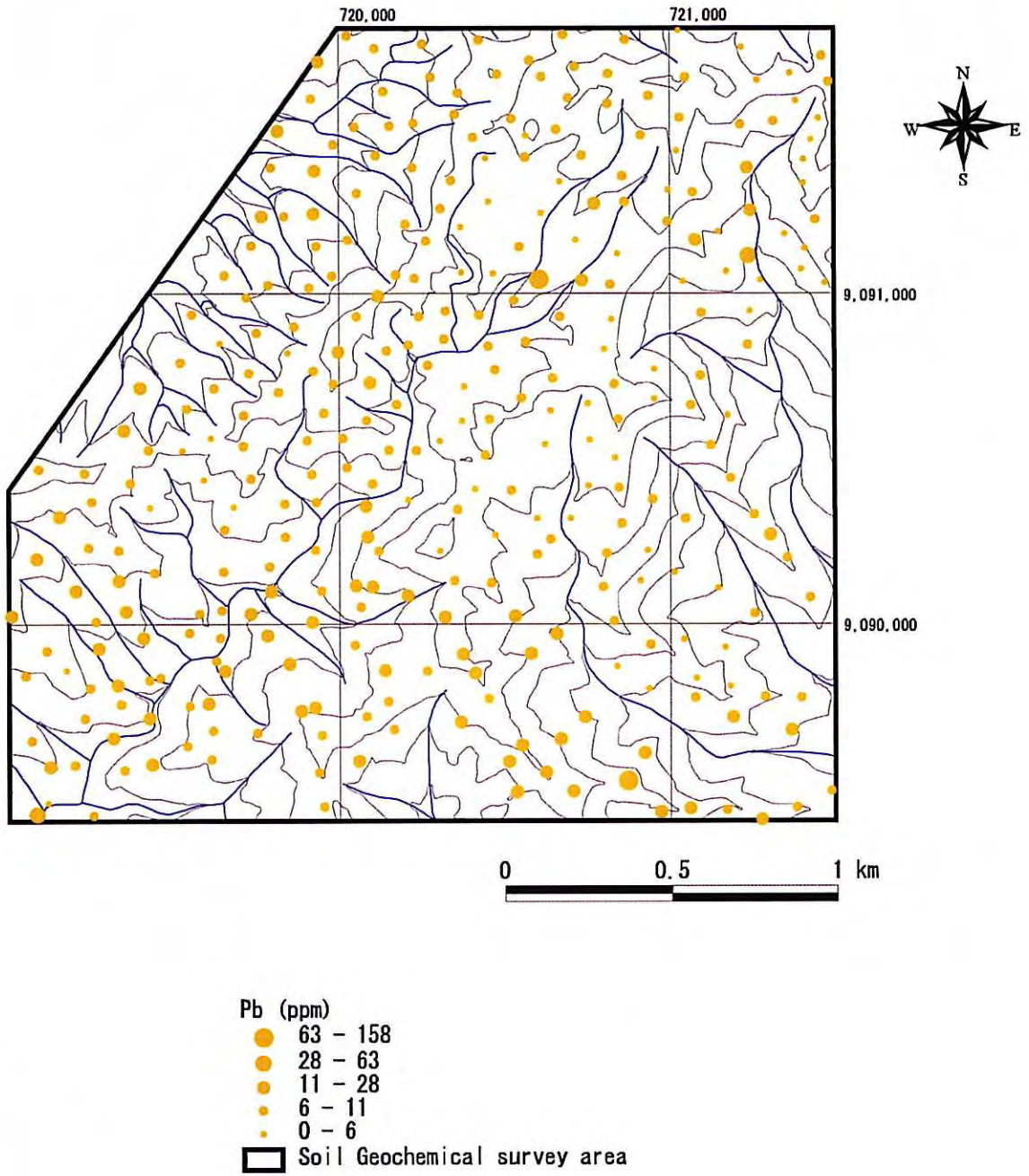


Fig.5-69 Geochemical Anomaly of Soil Samples in the Tempursari District (Pb)

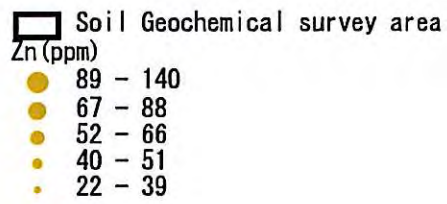
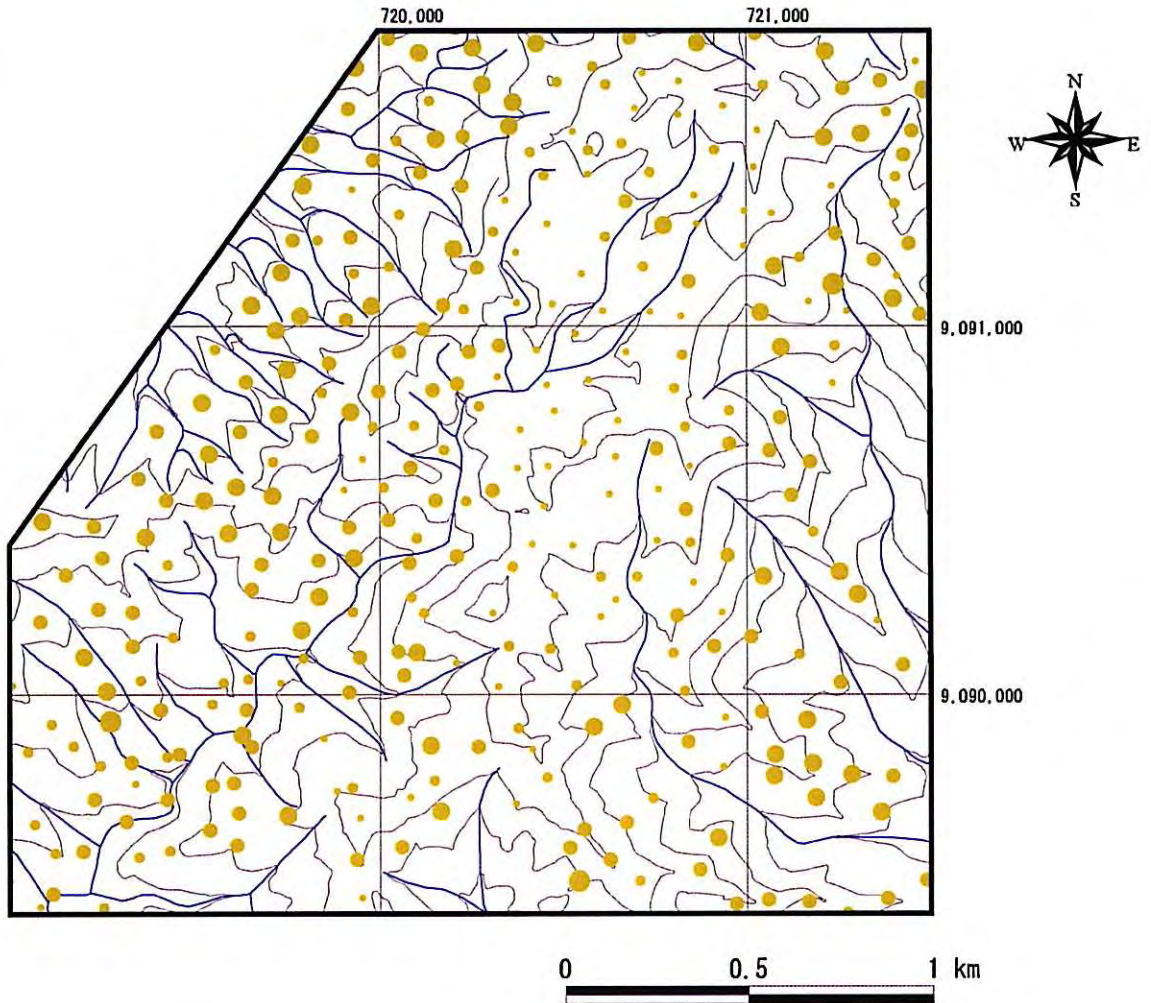


Fig.5-70 Geochemical Anomaly of Soil Samples in the Tempursari District (Zn)

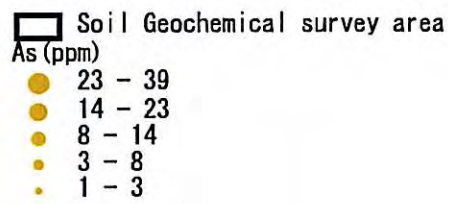
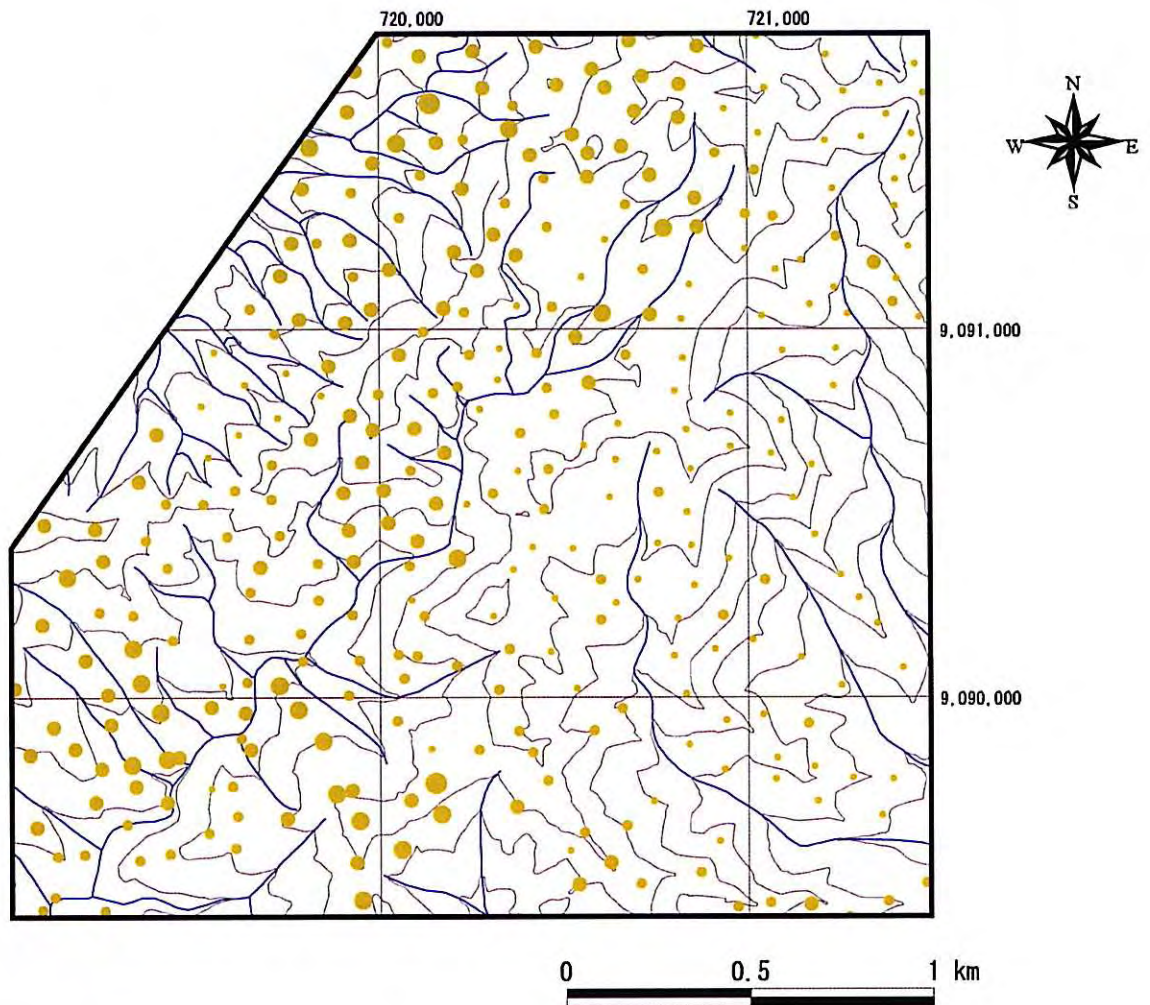


Fig.5-71 Geochemical Anomaly of Soil Samples in the Tempursari District (As)



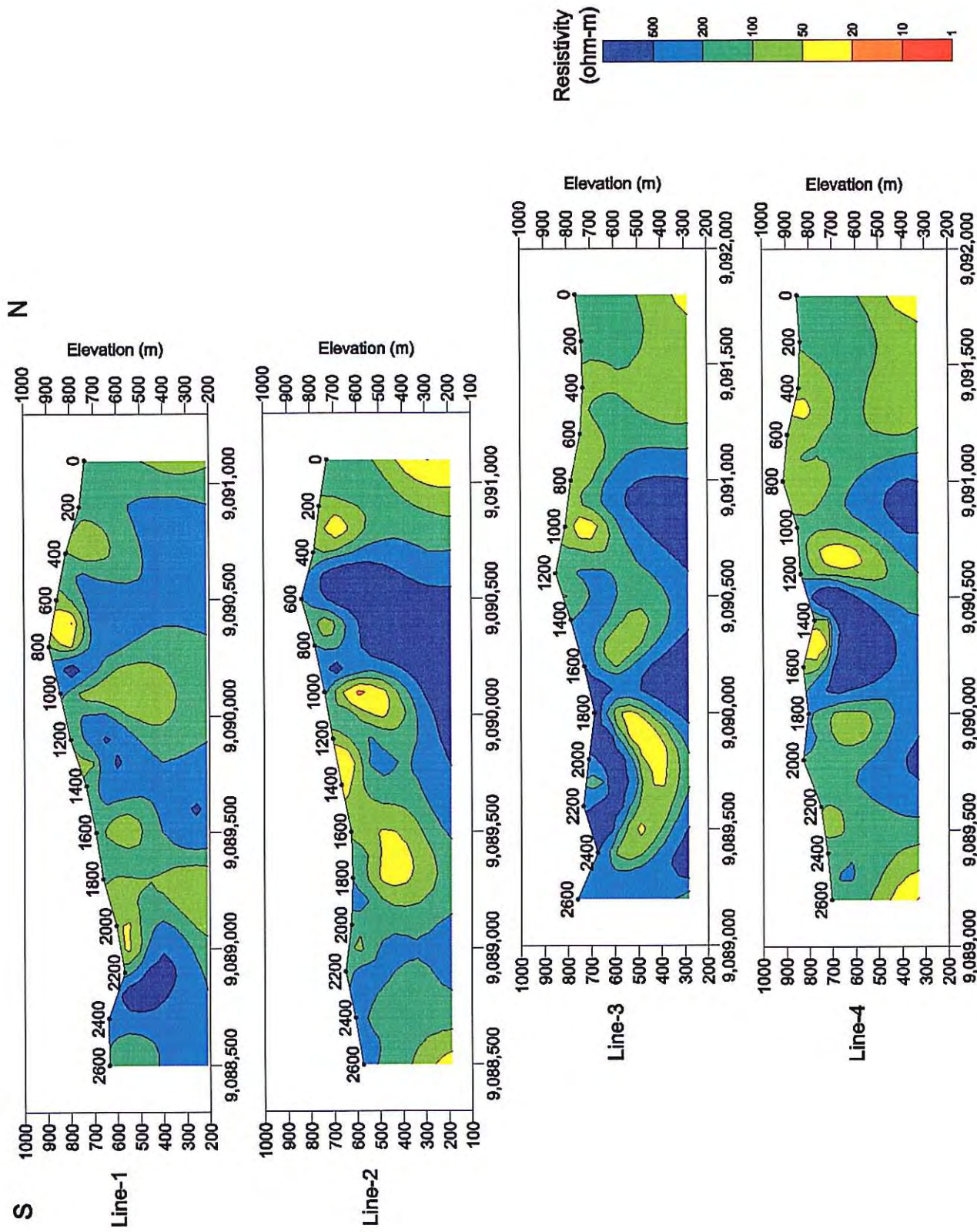


Fig. 5-72 Resistivity Sections in the Tempursari District

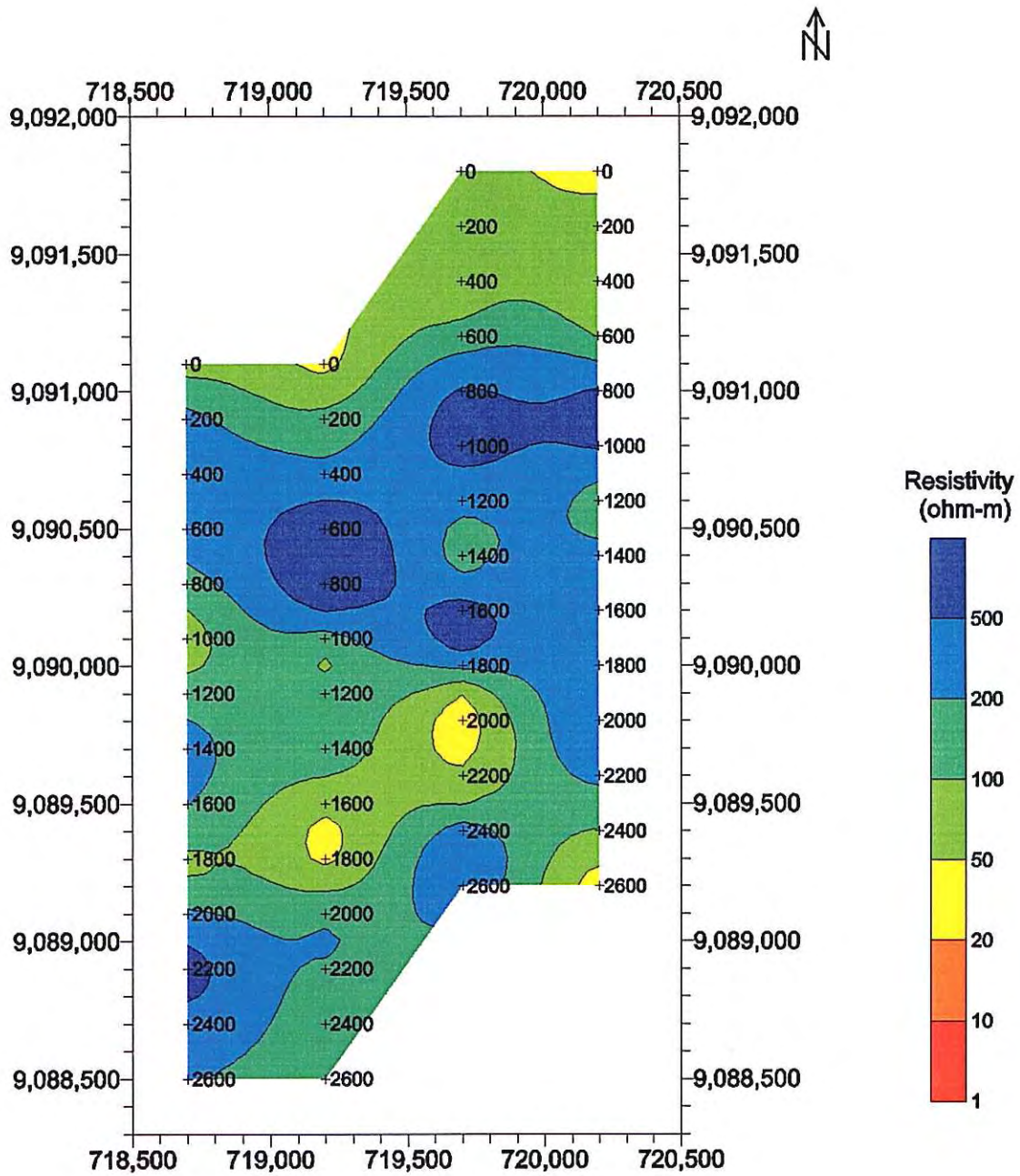


Fig. 5-73 Resistivity Plan at 400m Level in the Tempursari District

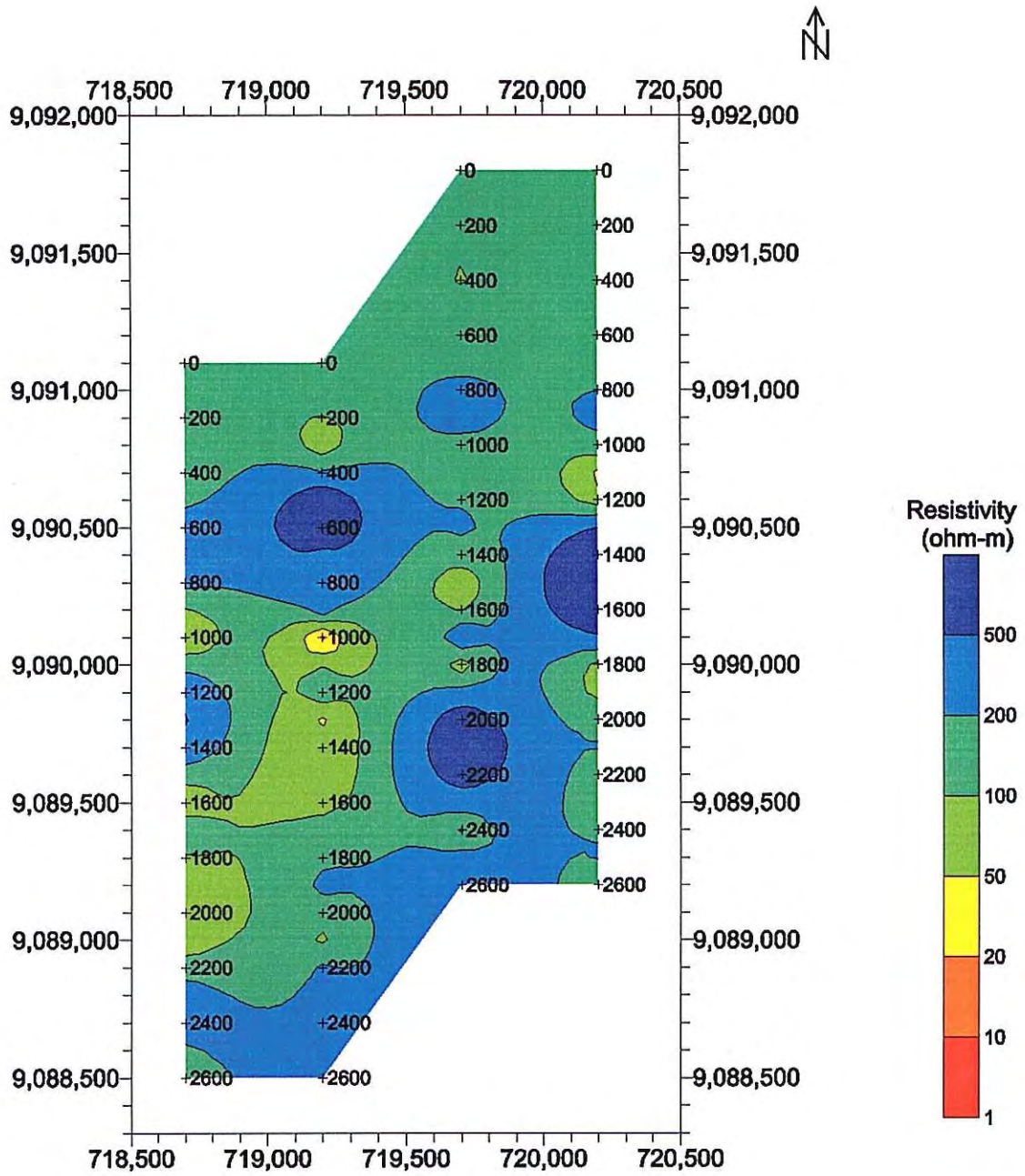


Fig. 5-74 Resistivity Plan at 600m Level in the Tempursari District

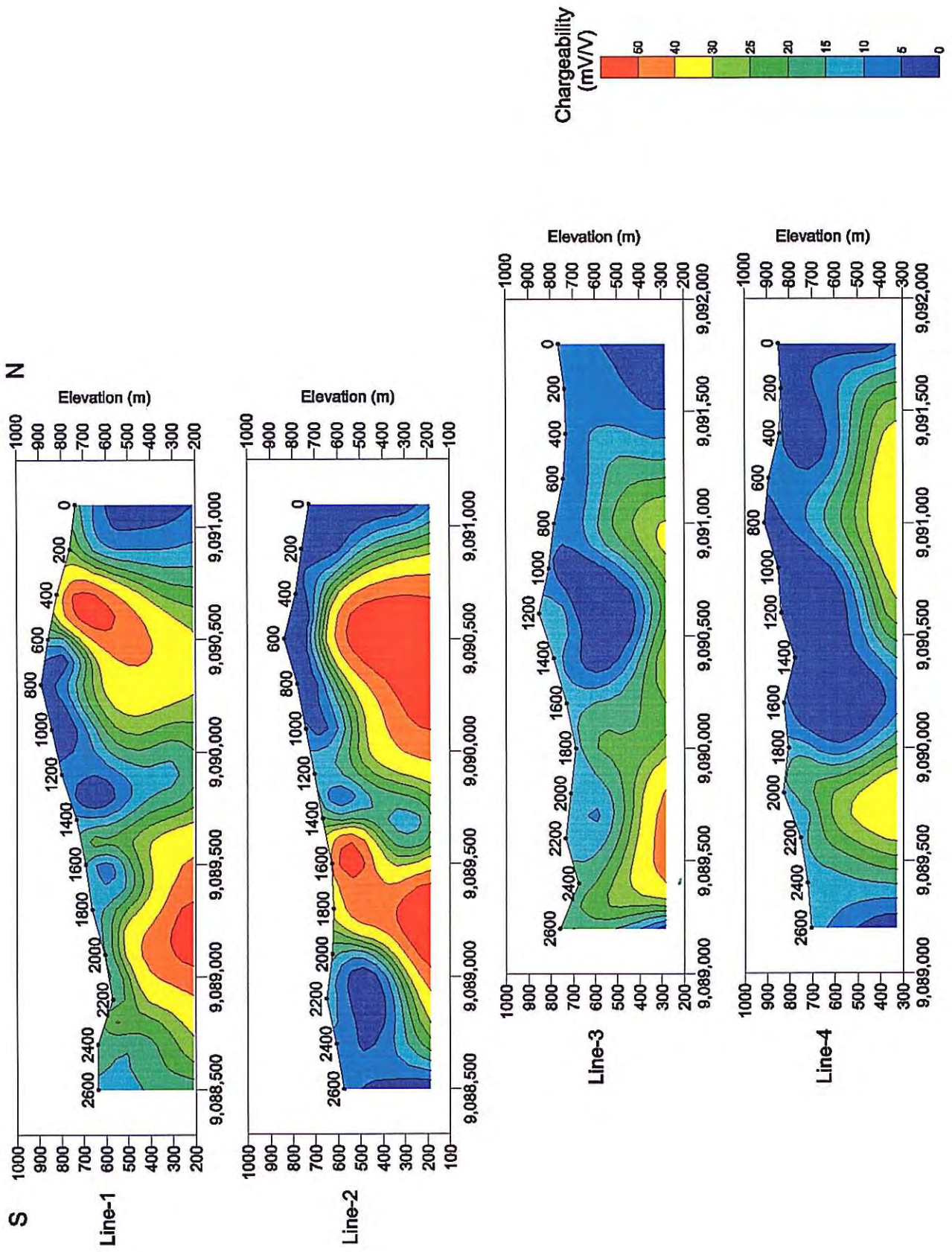


Fig. 5-75 Chargeability Sections in the Temprusari District

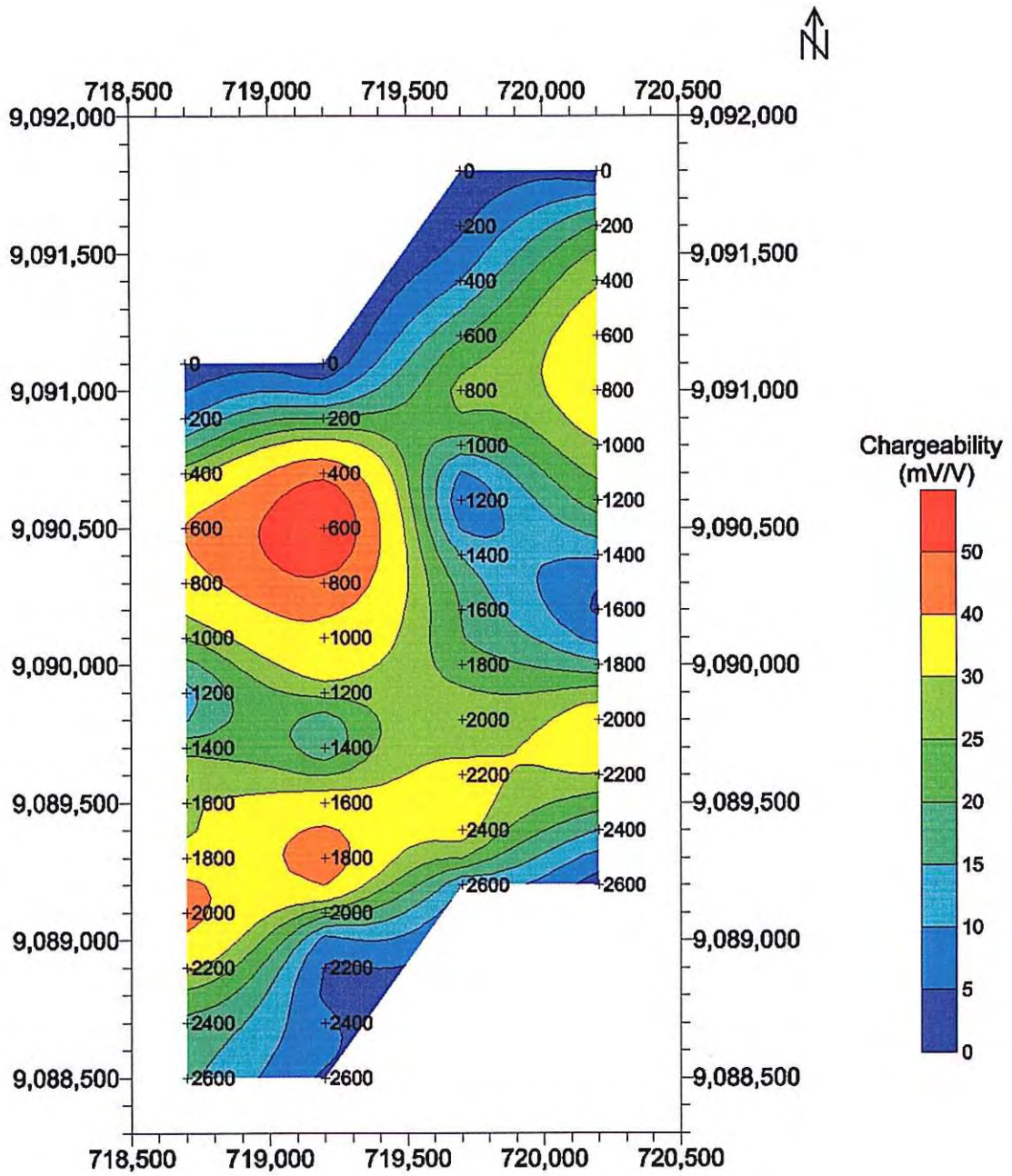


Fig. 5-76 Chargeability Plan at 400m Level in the Tempursari District

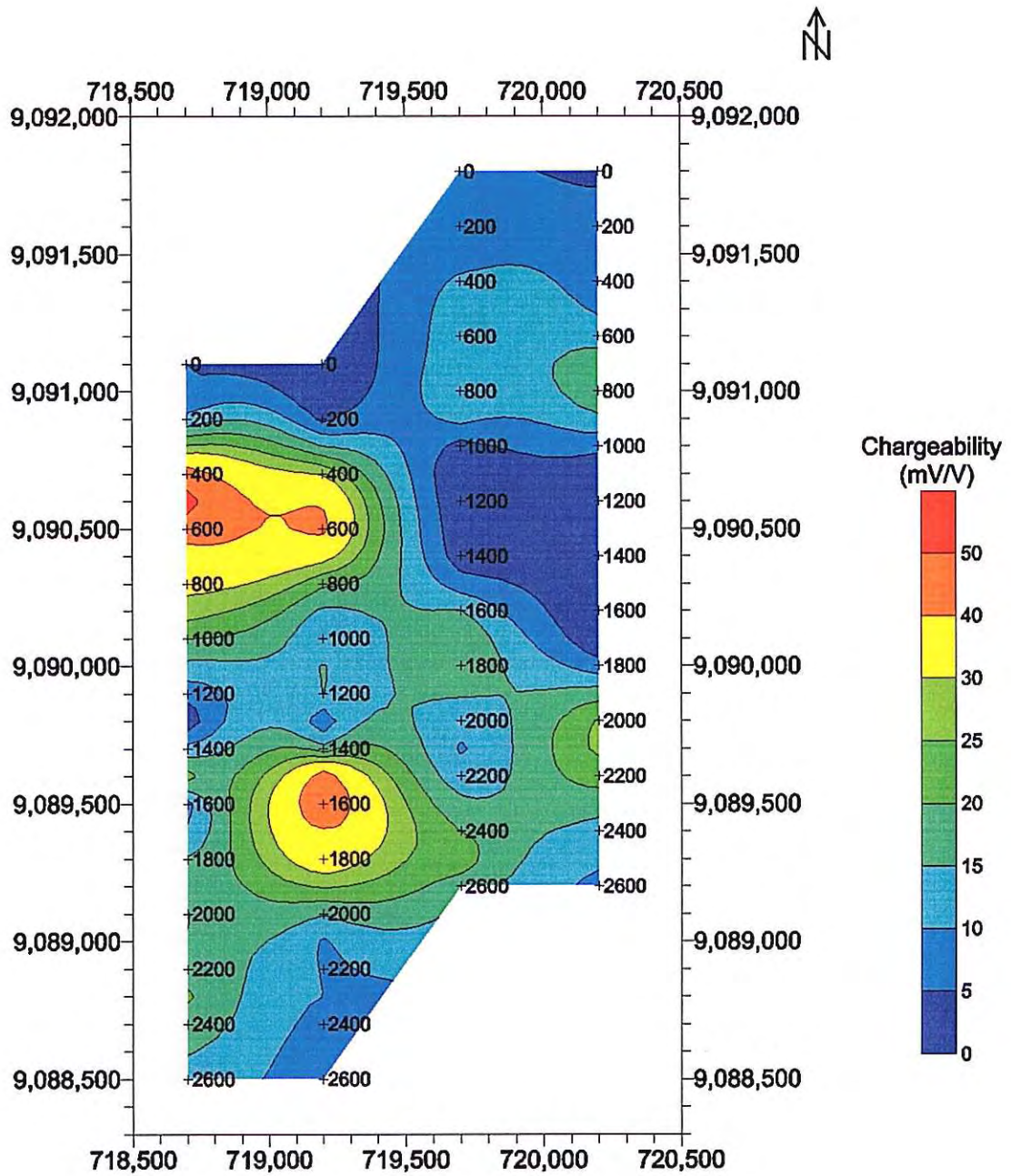


Fig. 5-77 Chargeability Plan at 400m Level in the Tempursari District