

Fig.5-38 Sketch of the alteration zone along K. Putih in the Seweden District

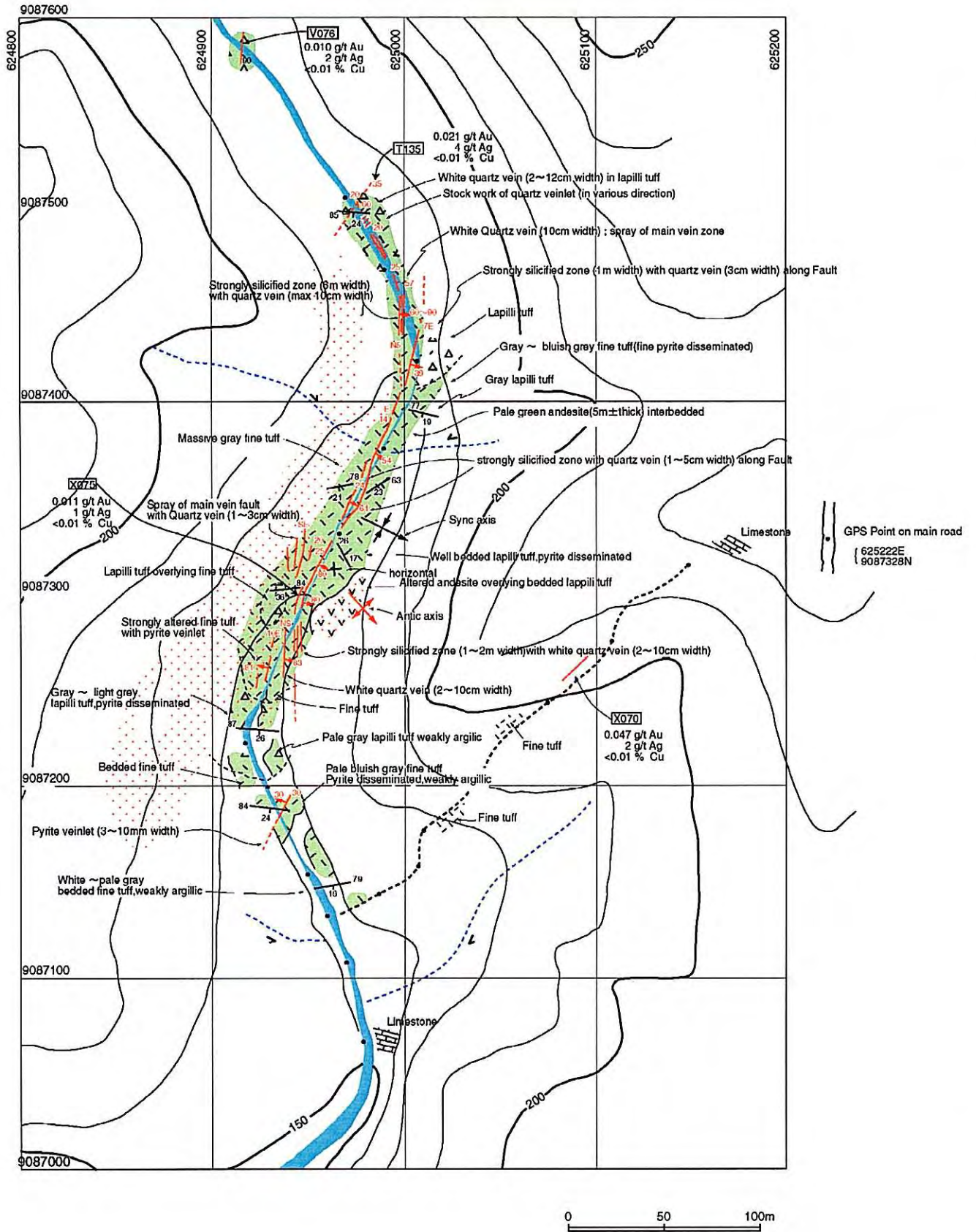
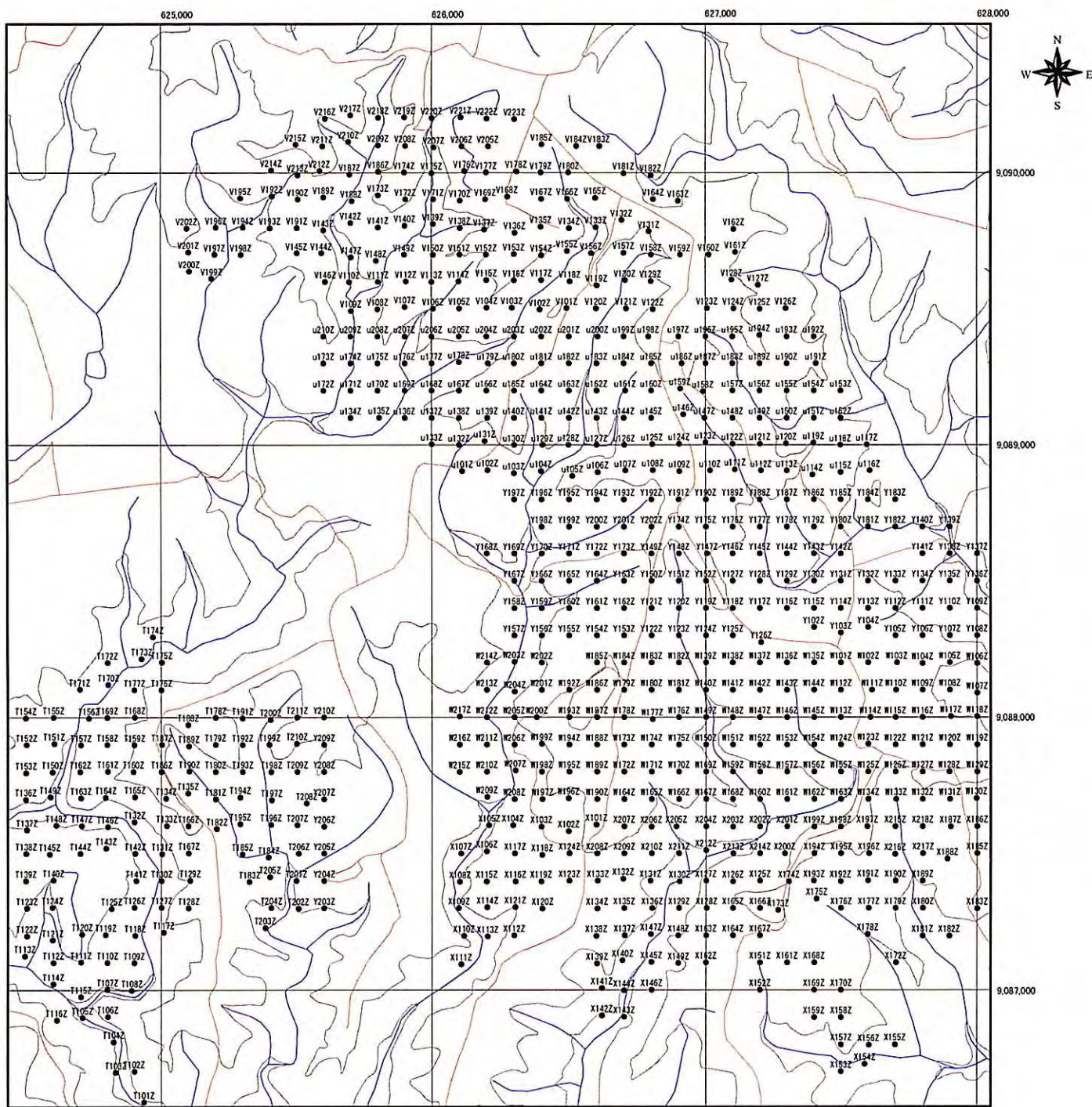


Fig. 5-39 Sketch of the Mineralized Zone of the Seweden District (2): K. Centung



Soil geochemical survey area
 Soil Sample Location

Fig.5-40 Location Map of Soil Samples of the Seweden District

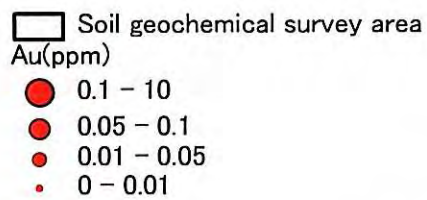
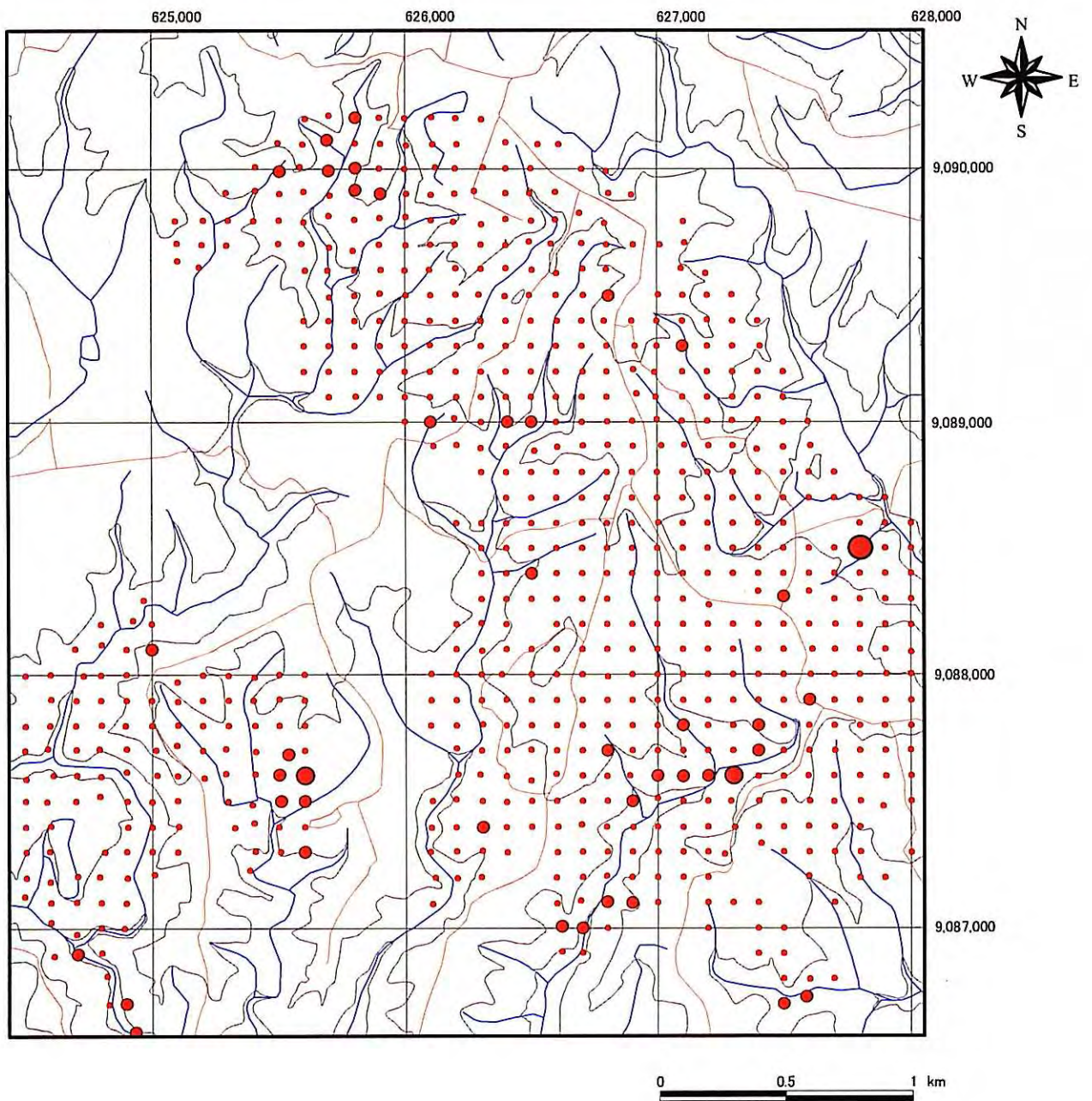


Fig.5-41 Geochemical Anomaly of Soil Samples in the Seweden District (Au)

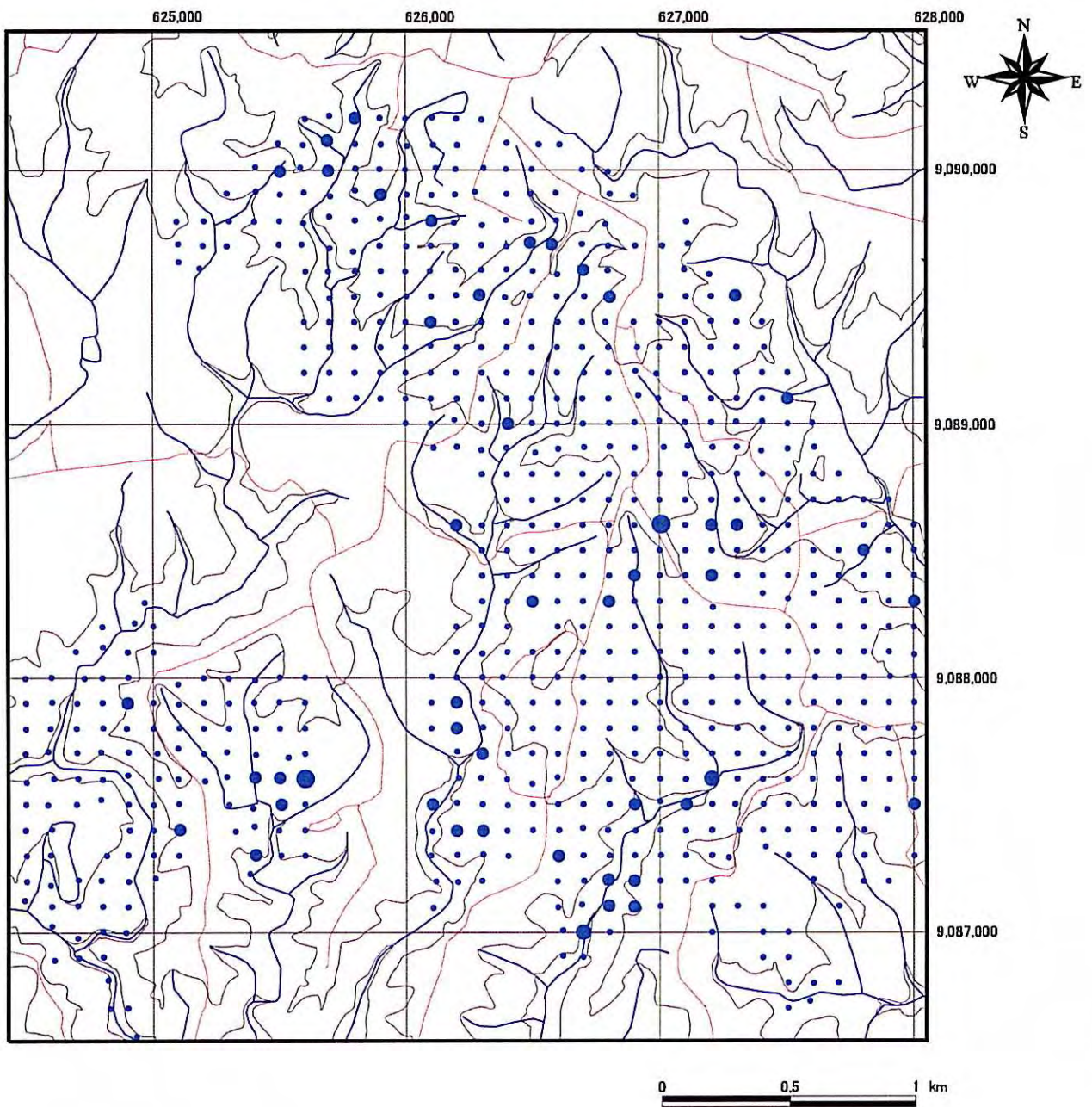
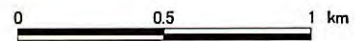
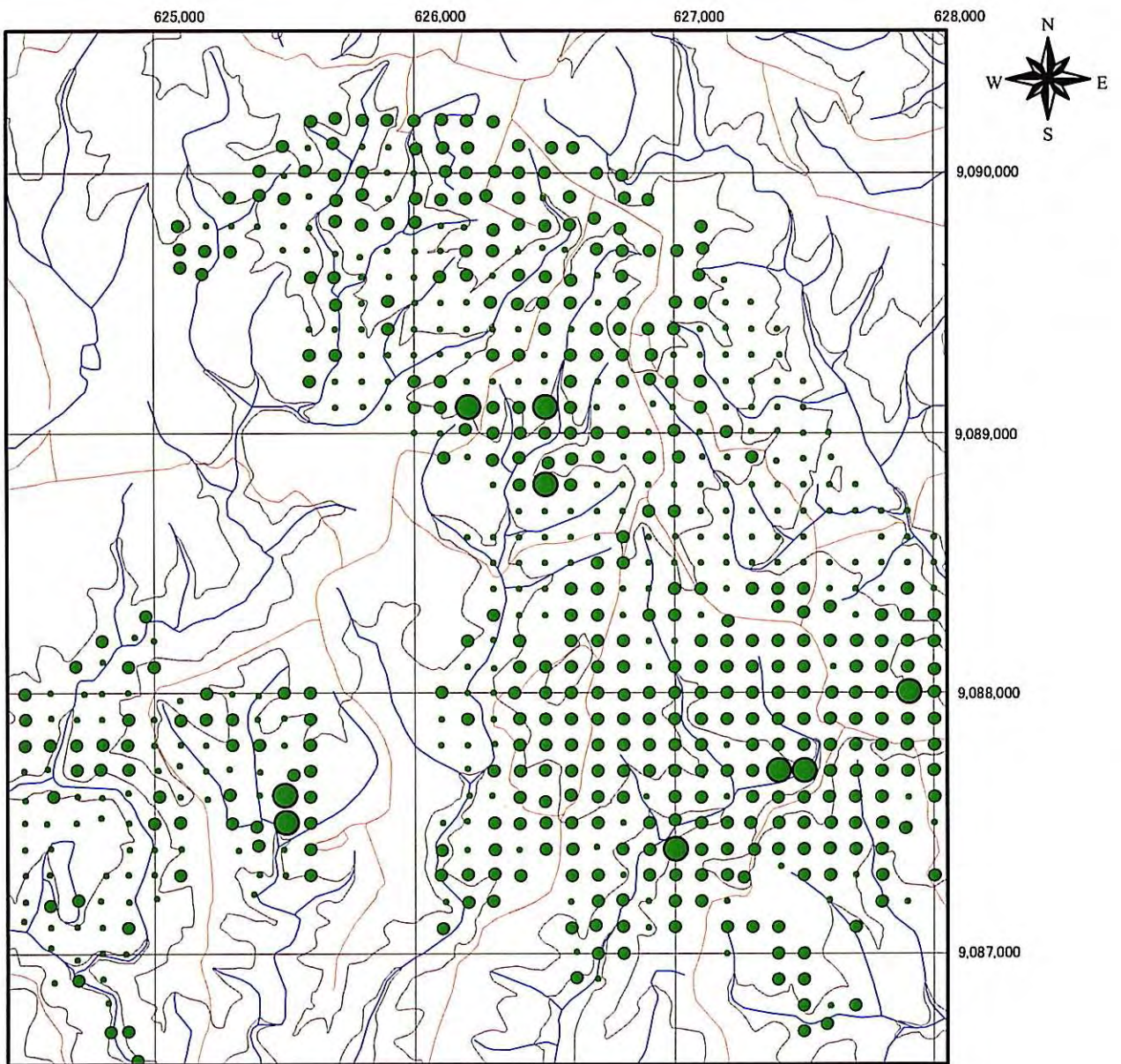


Fig.5-42 Geochemical Anomaly of Soil Samples in the Seweden District (Ag)



- Soil geochemical survey area
- Cu(ppm)
- 100 – 200
- 50 – 100
- 0 – 50

Fig.5-43 Geochemical Anomaly of Soil Samples in the Seweden District (Cu)

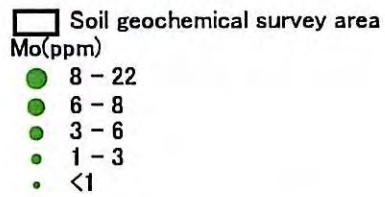
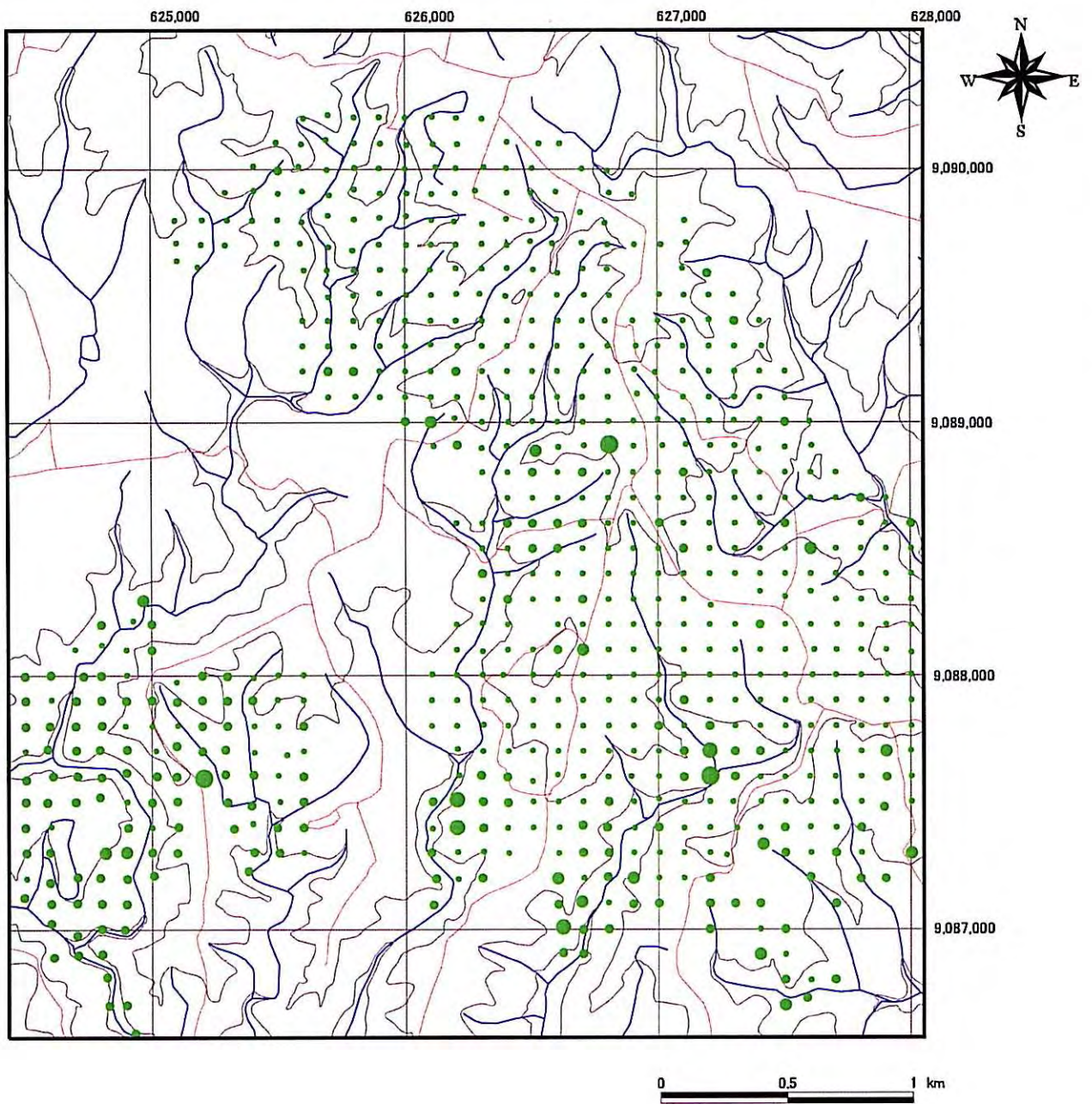
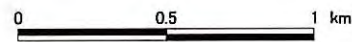
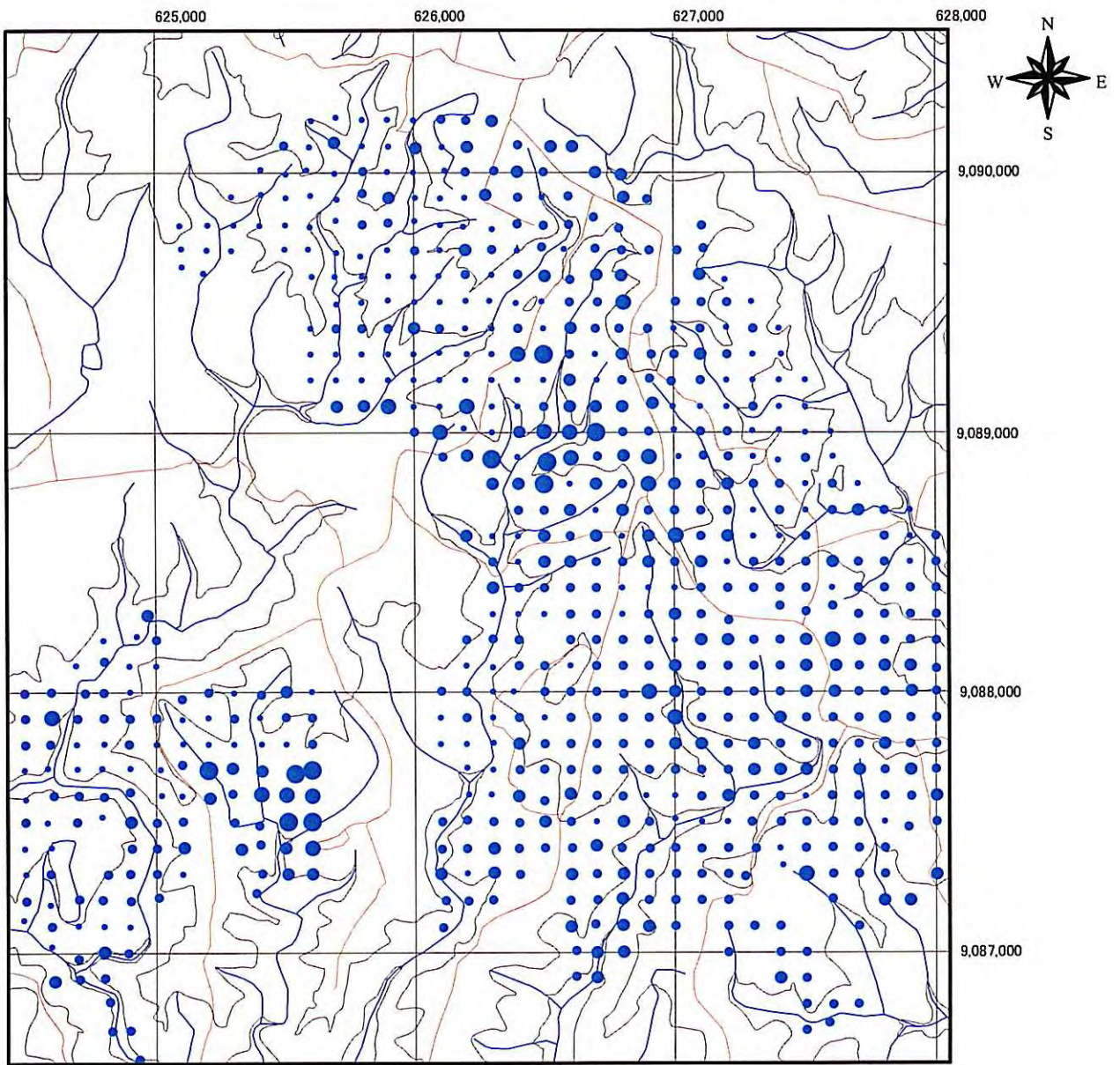


Fig.5-44 Geochemical Anomaly of Soil Samples in the Seweden District (Mo)



- Soil geochemical survey area
- Pb(ppm)
- 65 - 256
- 31 - 65
- 15 - 31
- 8 - 15
- 1 - 8

Fig.5-45 Geochemical Anomaly of Soil Samples in the Seweden District (Pb)

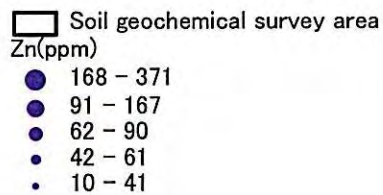
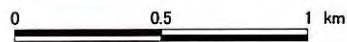
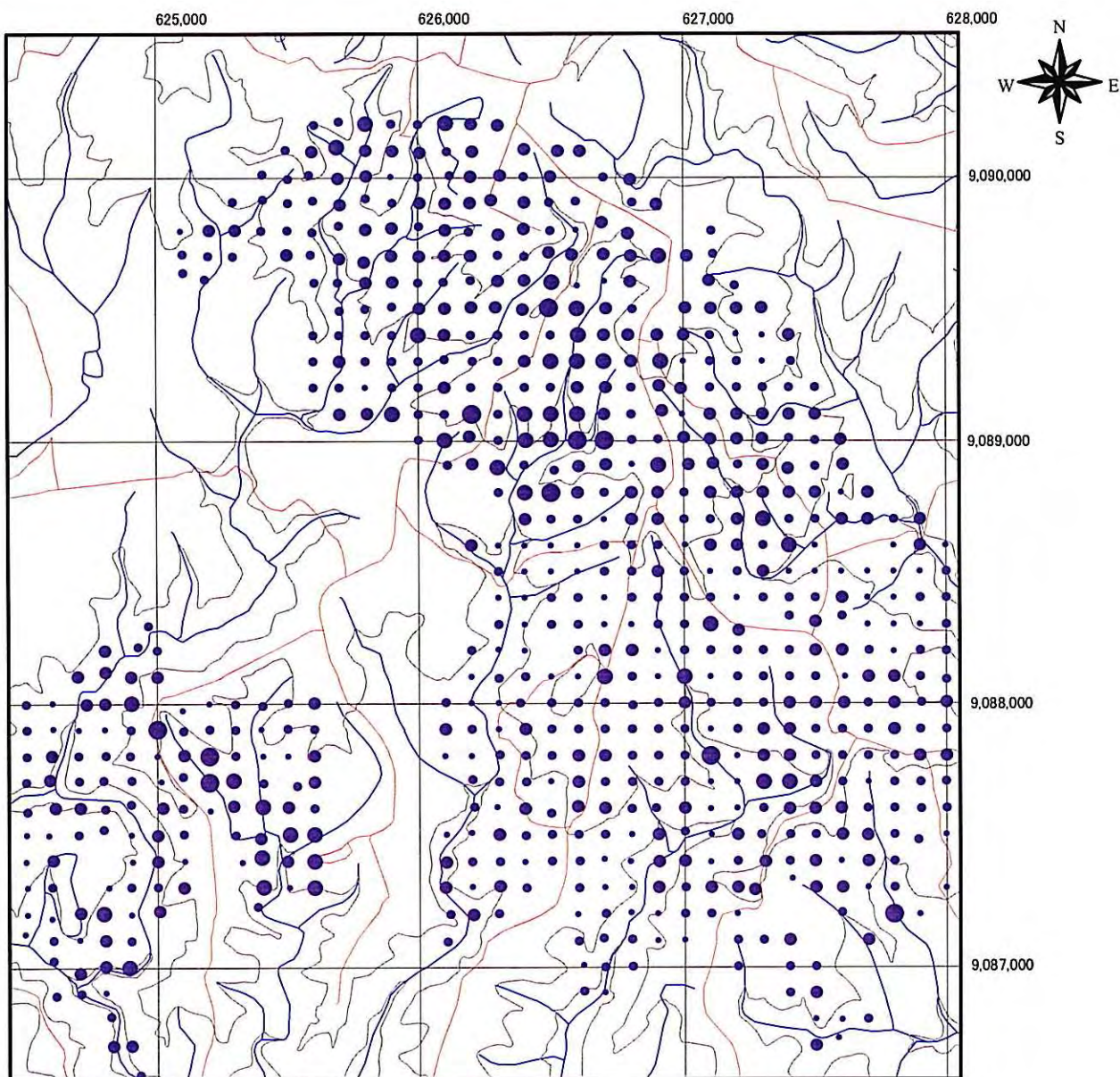


Fig.5-46 Geochemical Anomaly of Soil Samples in the Seweden District (Zn)

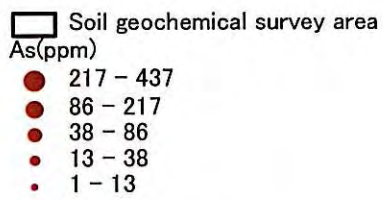
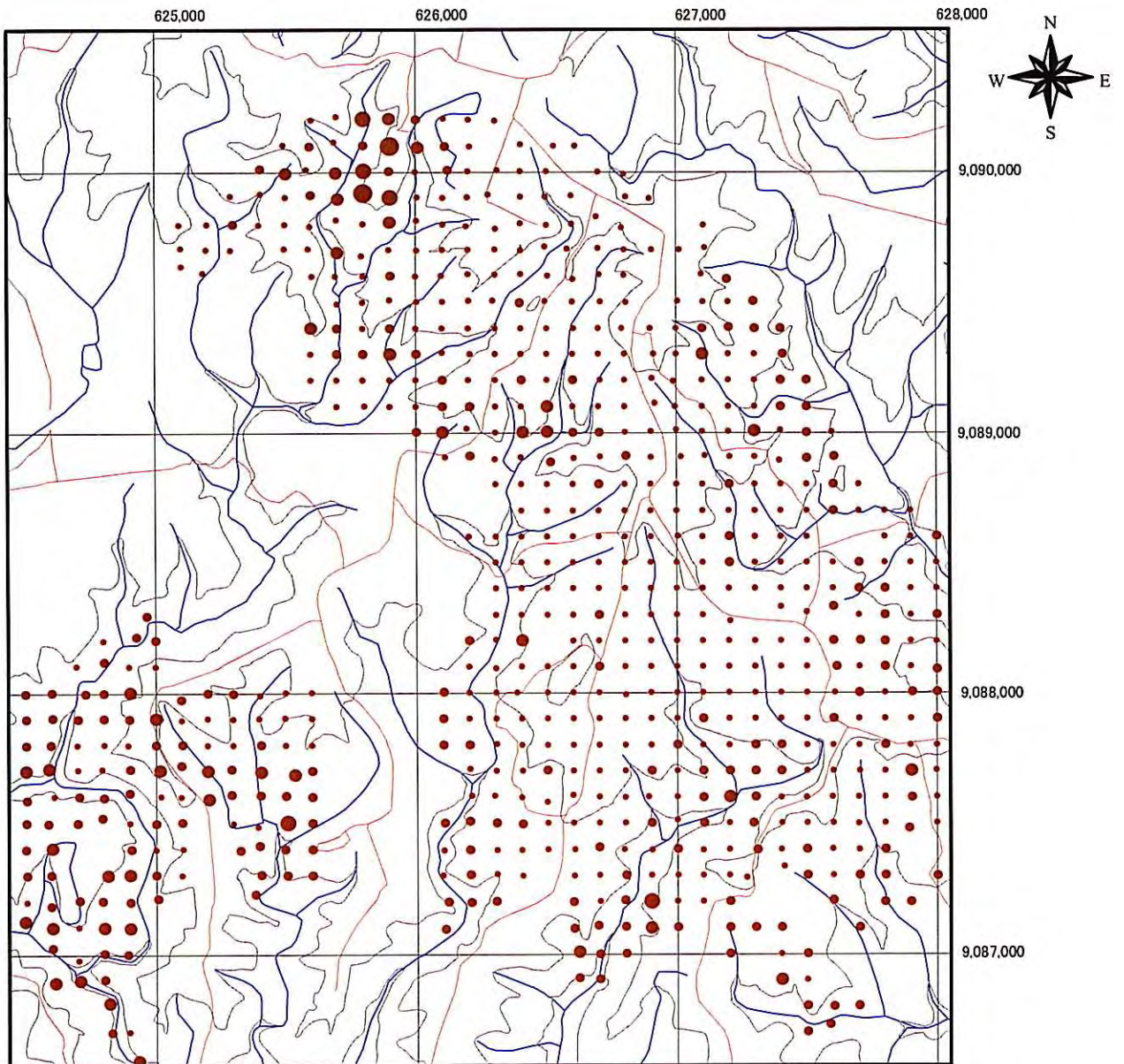


Fig.5-47 Geochemical Anomaly of Soil Samples in the Seweden District (As)