

Fig.3-5 Geochemical Anomaly of Stream Sediments(Cu)



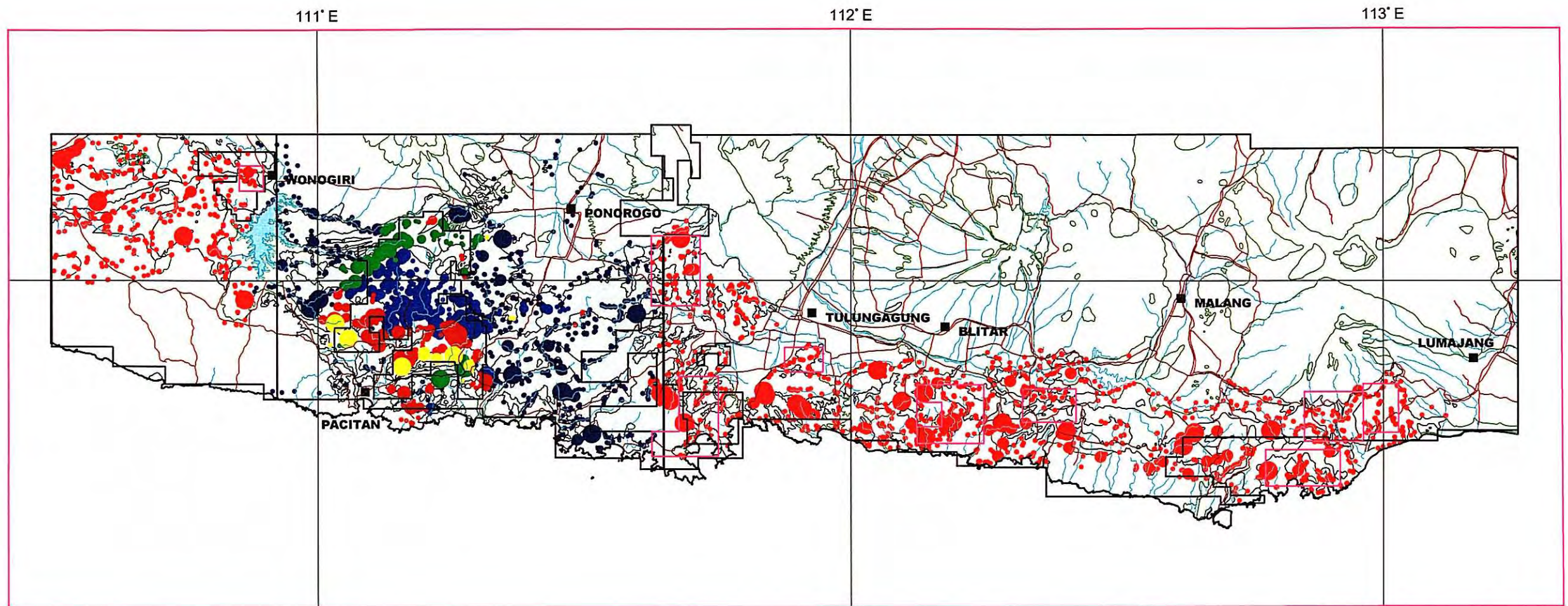


Fig.3-6 Geochemical Anomaly of Stream Sediments(Mo)



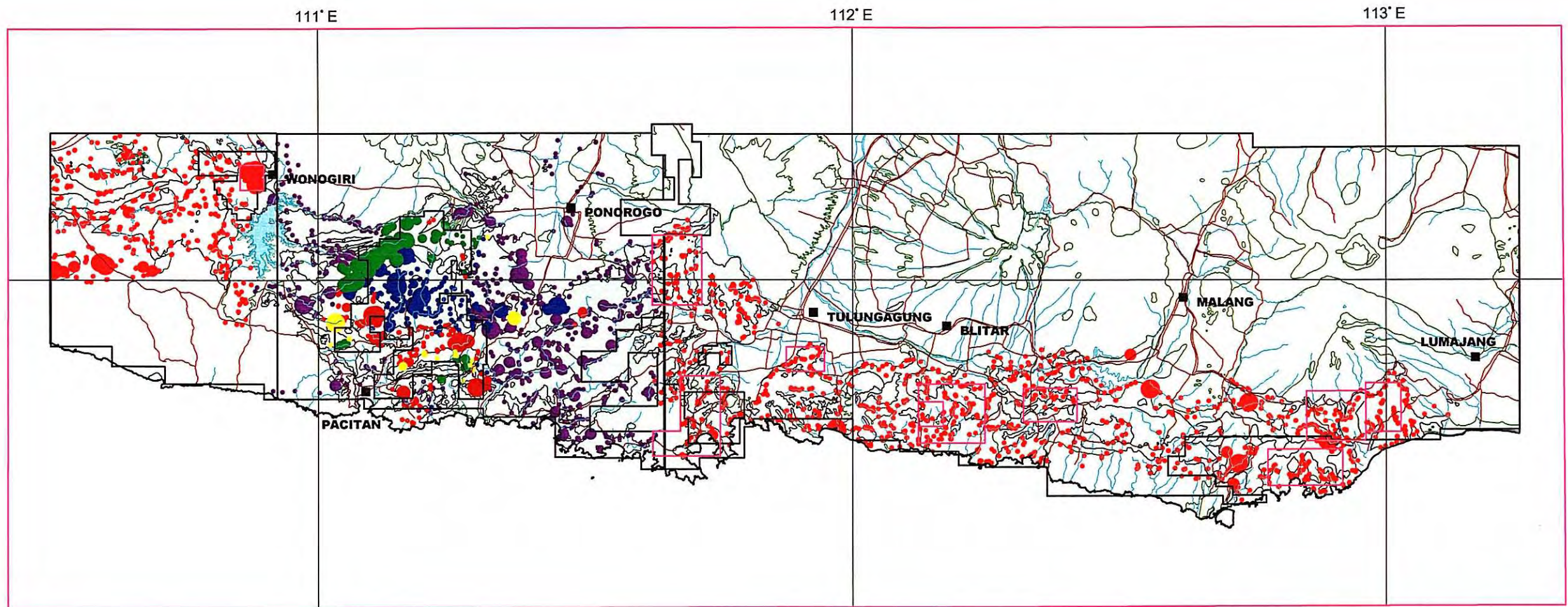


Fig.3-7 Geochemical Anomaly of Stream Sediments(Pb)



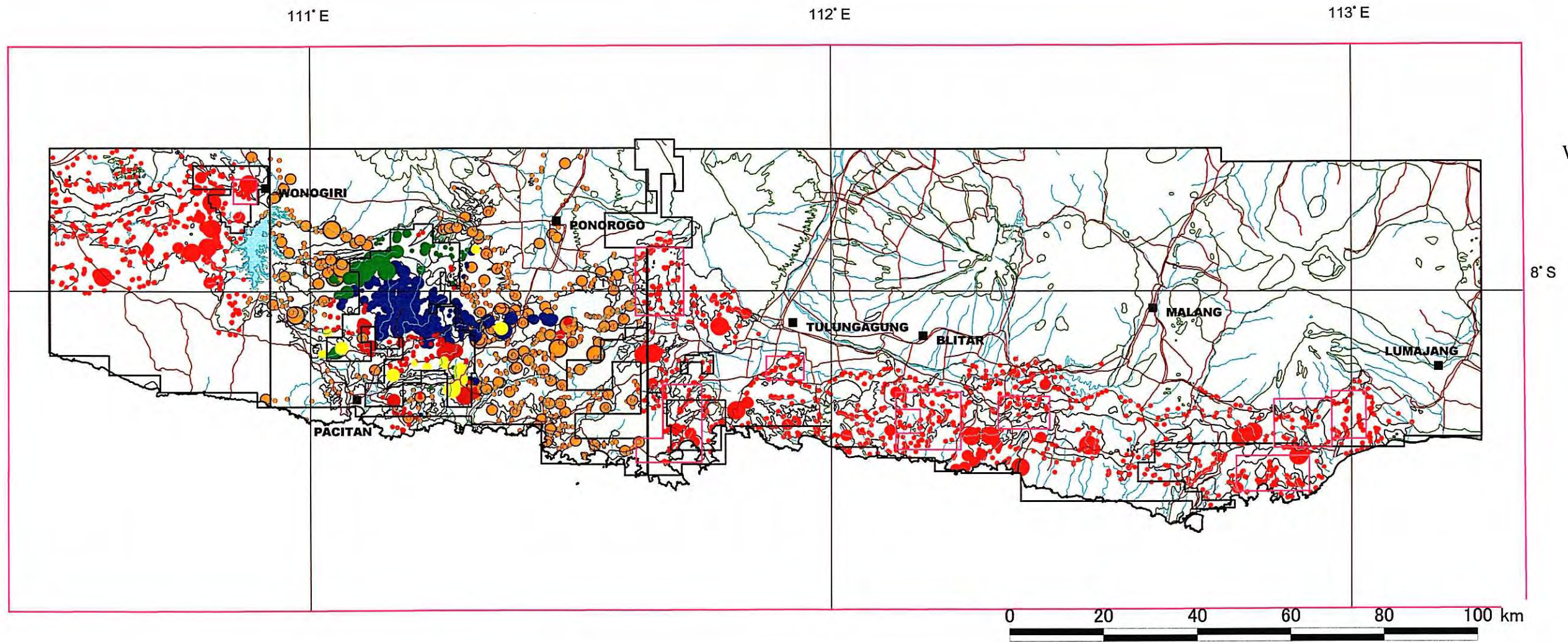


Fig.3-8 Geochemical Anomaly of Stream Sediments(Zn)



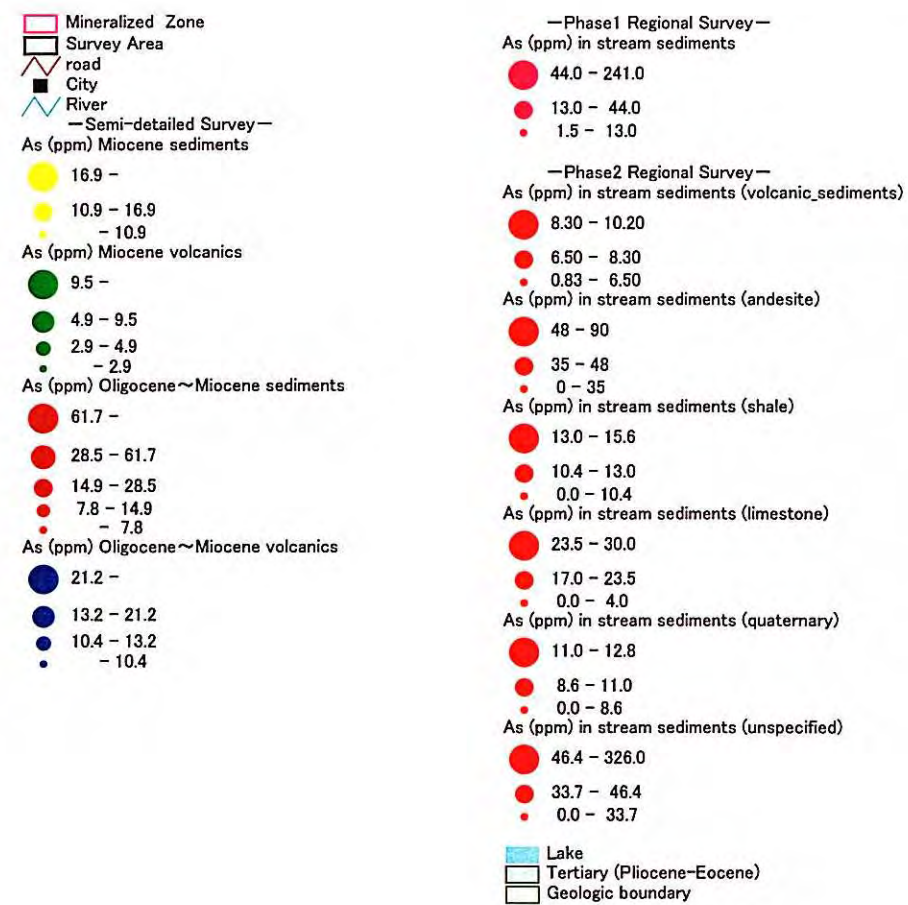
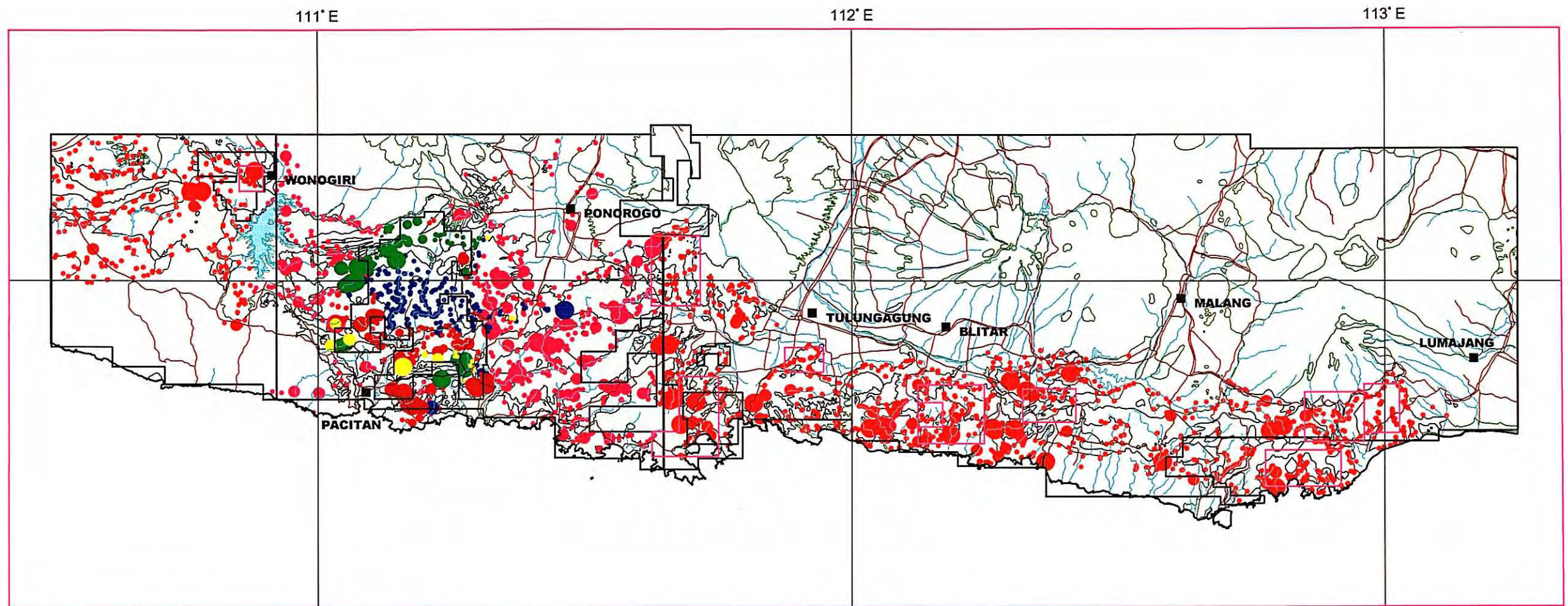


Fig.3-9 Geochemical Anomaly of Stream Sediments(As)



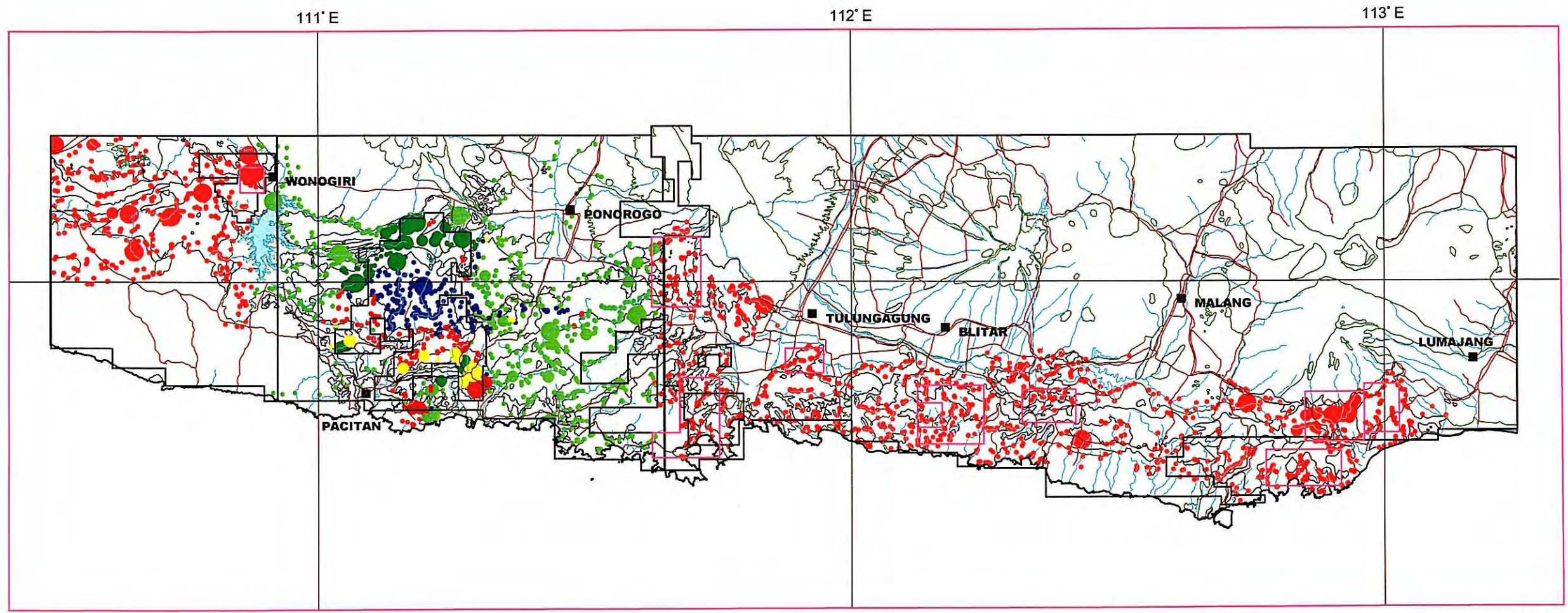


Fig.3-10 Geochemical Anomaly of Stream Sediments(Hg)

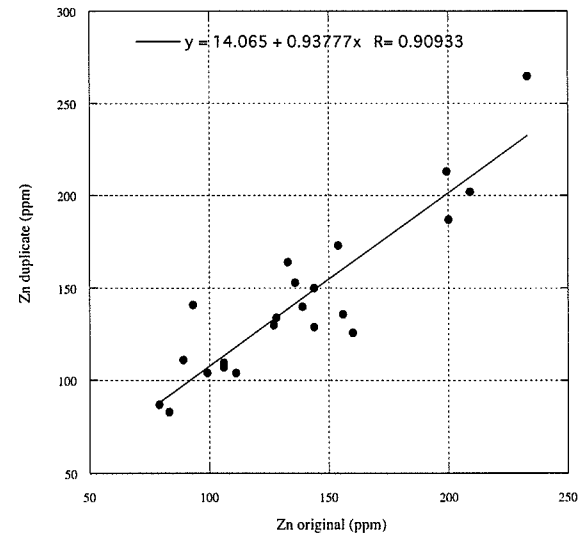
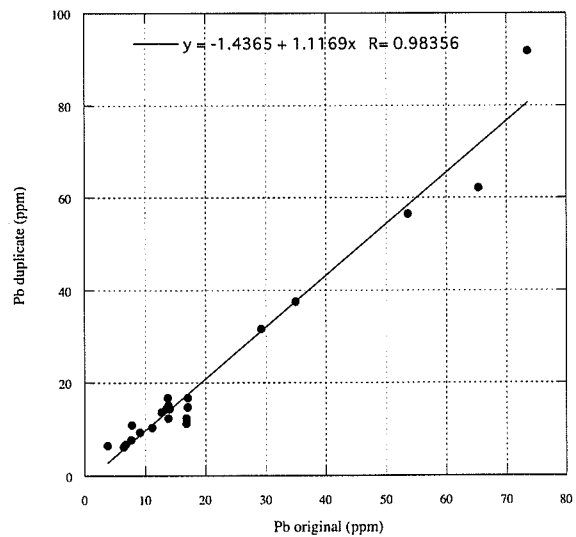
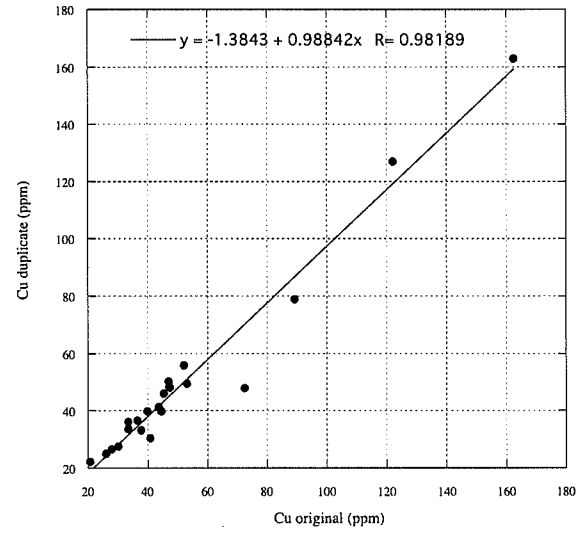
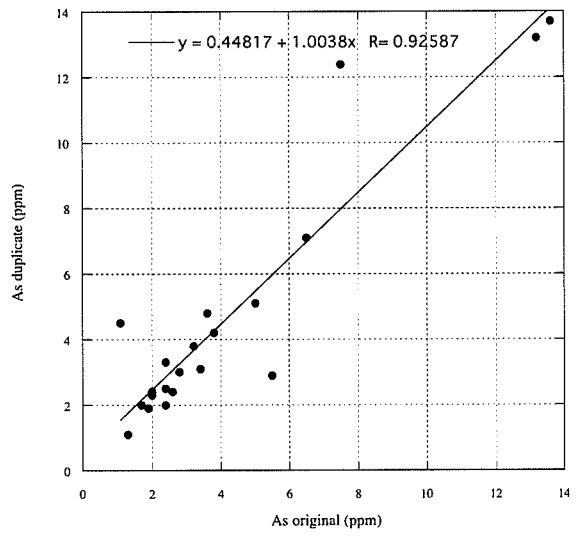
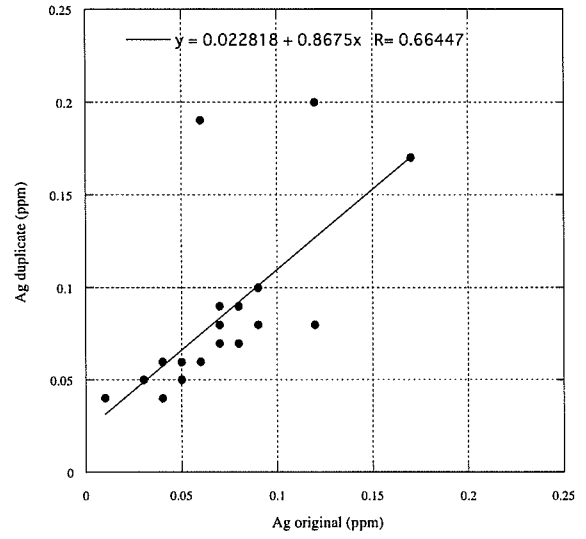
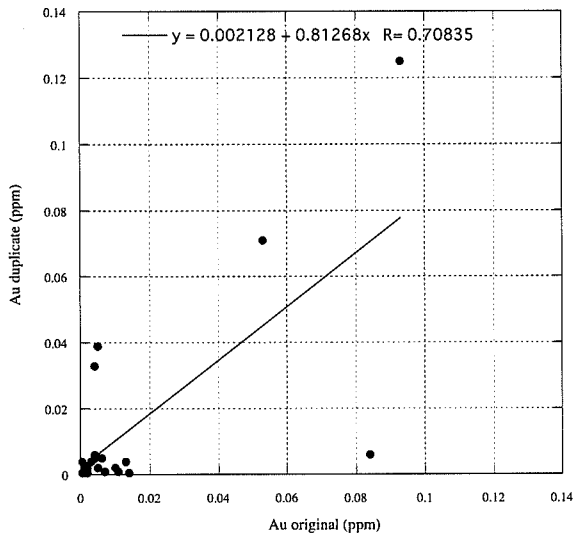


Fig.4-1 Correlation between Elements of Geochemical Samples (1)

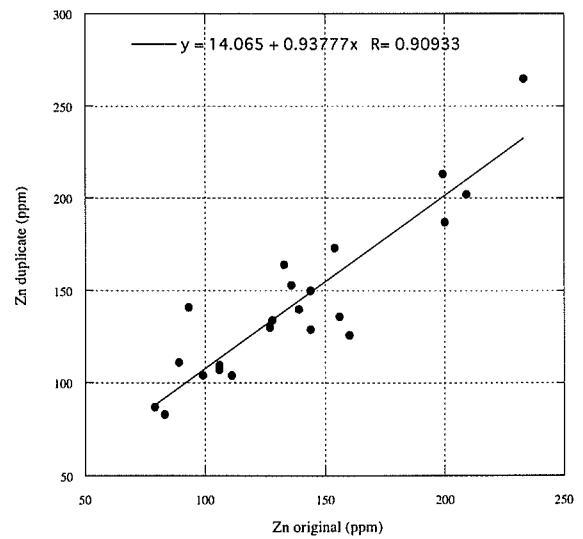
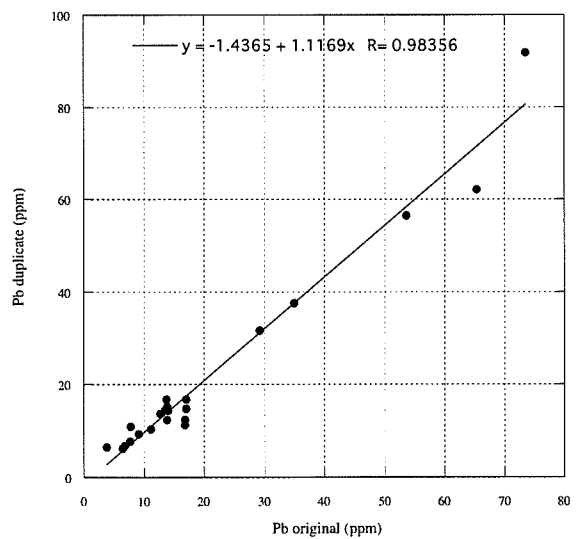
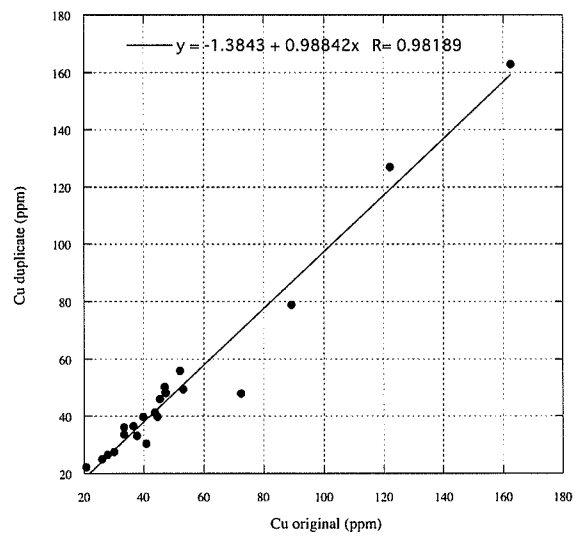
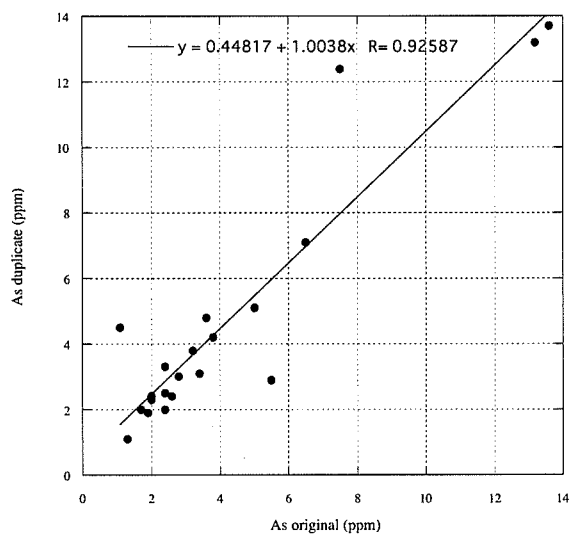
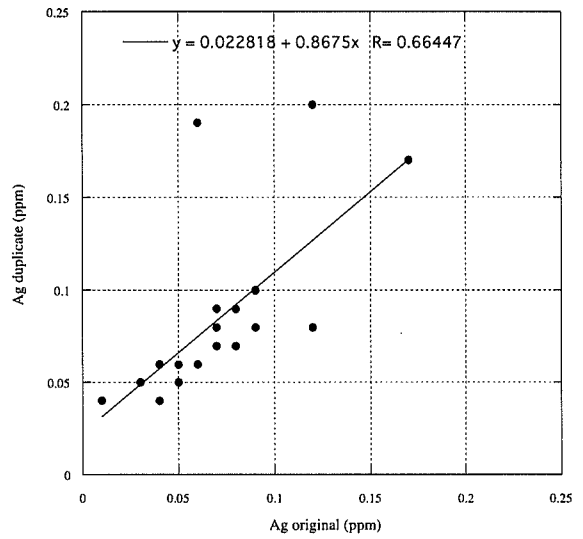
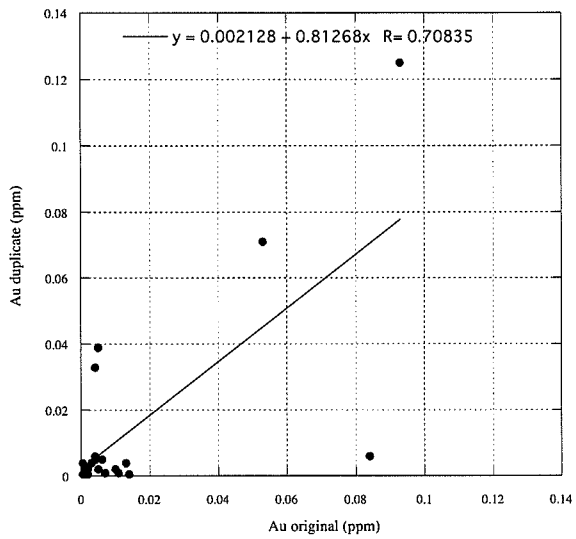


Fig.4-1 Correlation between Elements of Geochemical Samples (2)



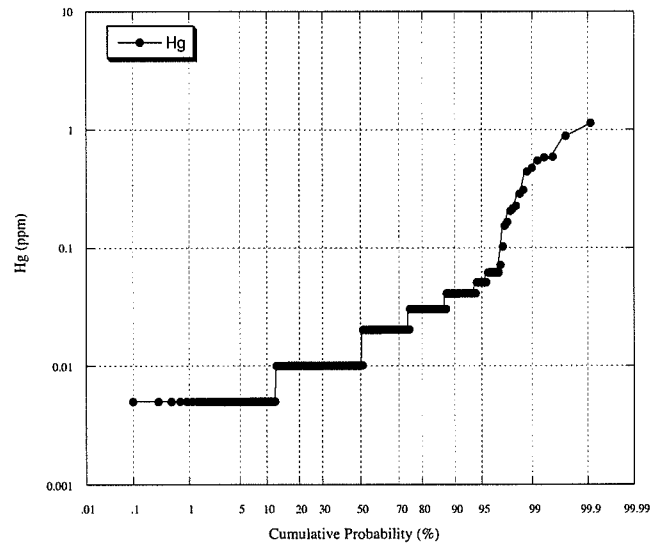
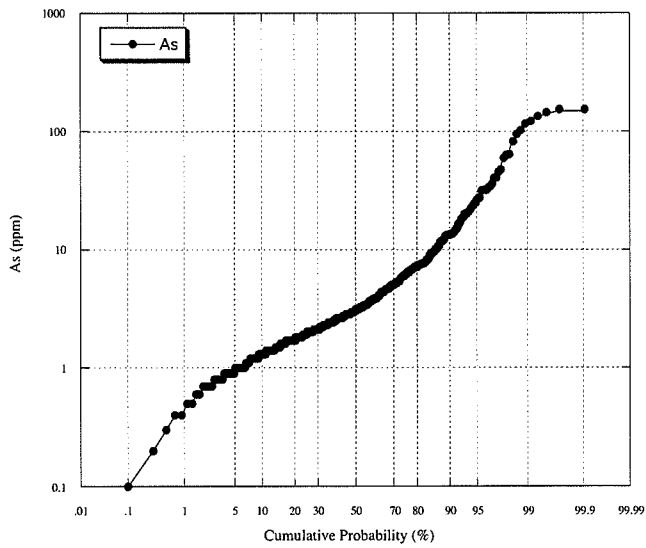
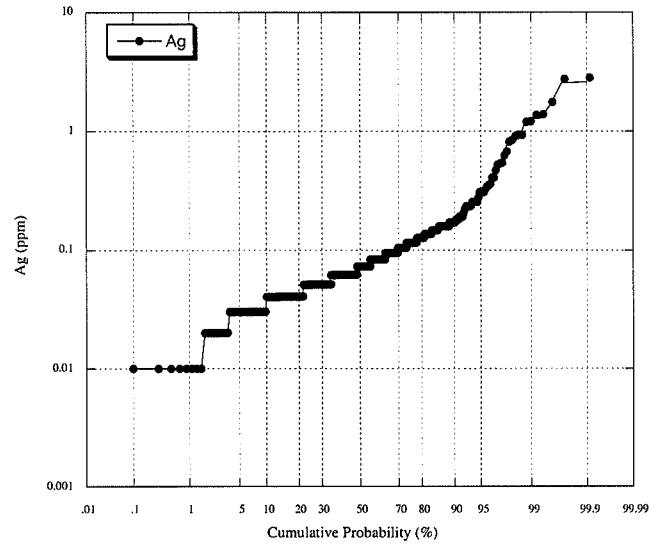
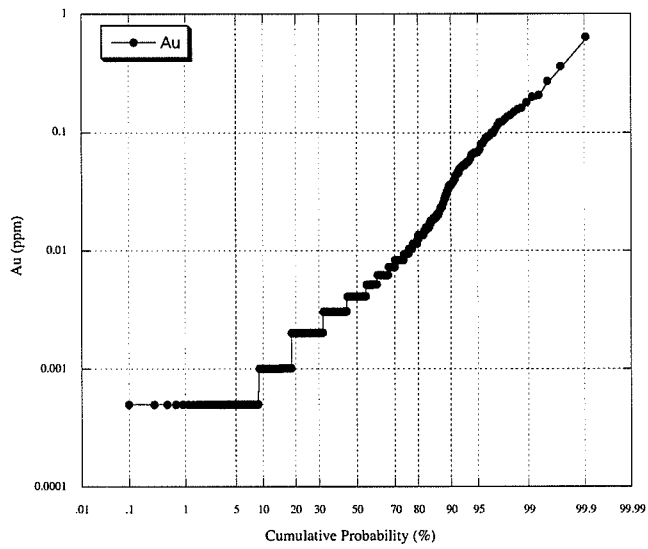


Fig.4-2 Probability Graphs of Stream Sediment Samples (Au,Ag,As and Hg)



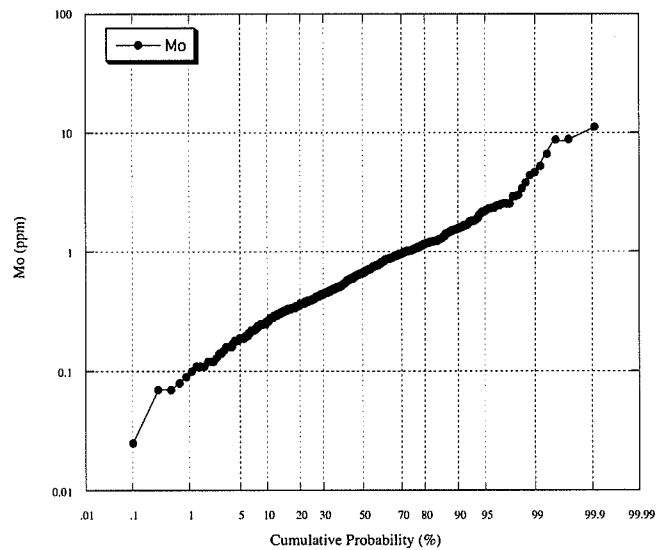
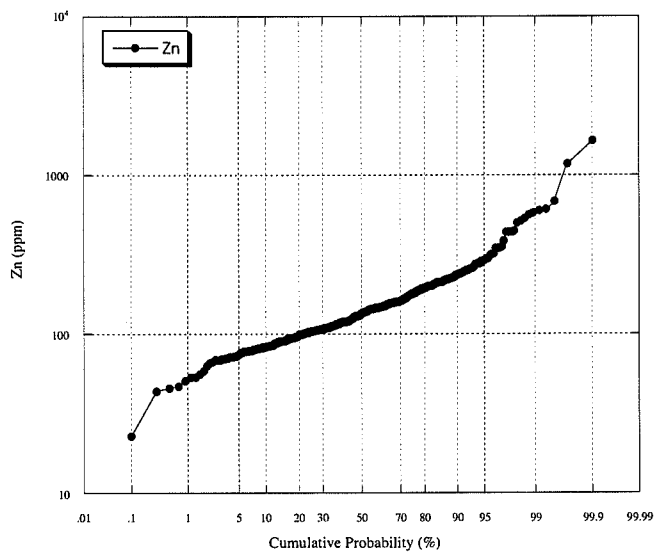
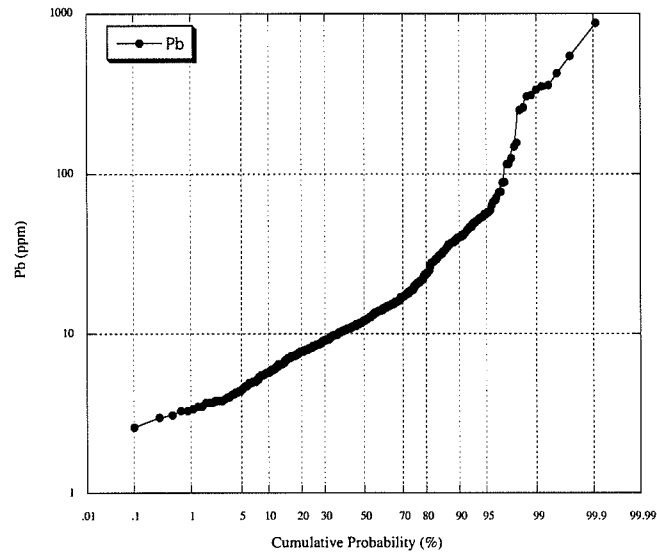
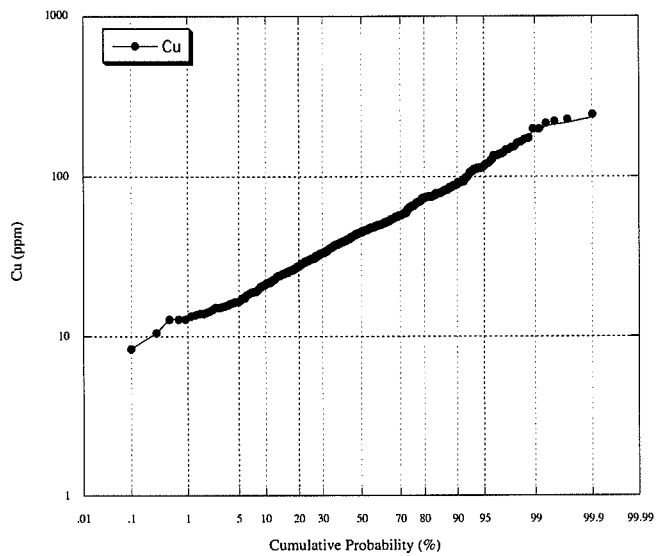


Fig.4-3 Probability Graphs of Stream Sediment Samples (Cu,Pb,Zn and Mo)



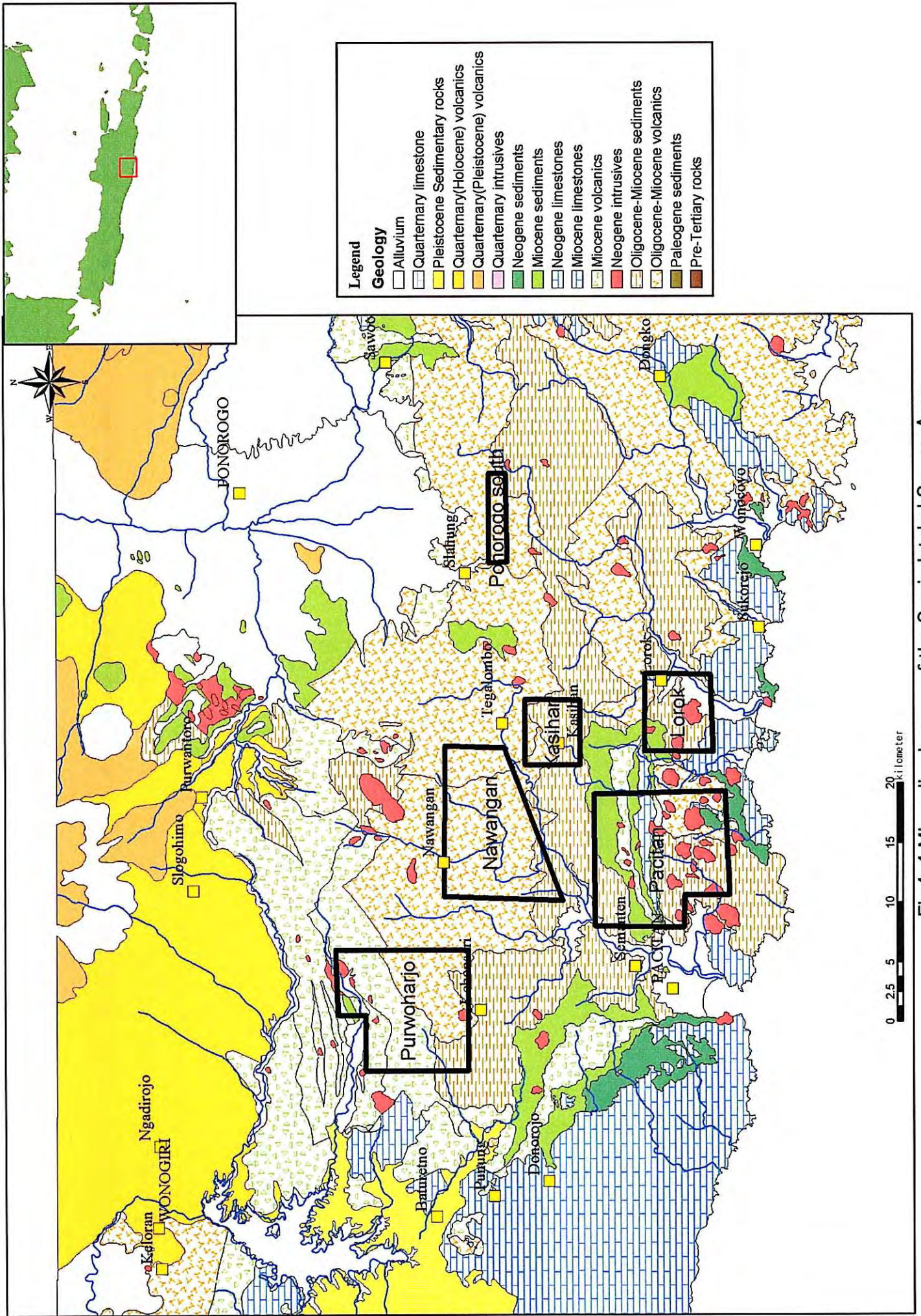


Fig.4-4 Mineralized zones of the Semi-detailed Survey Area