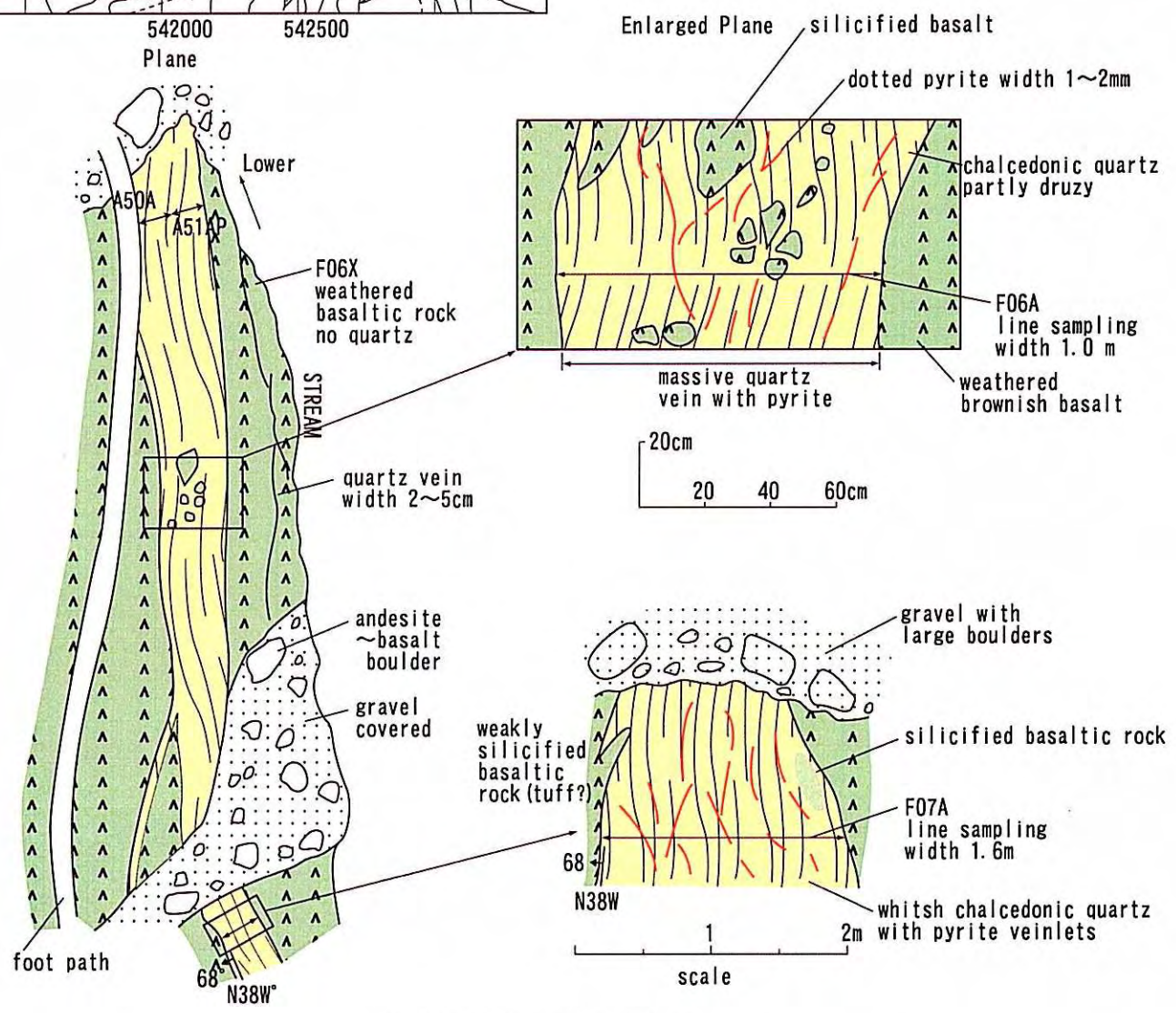
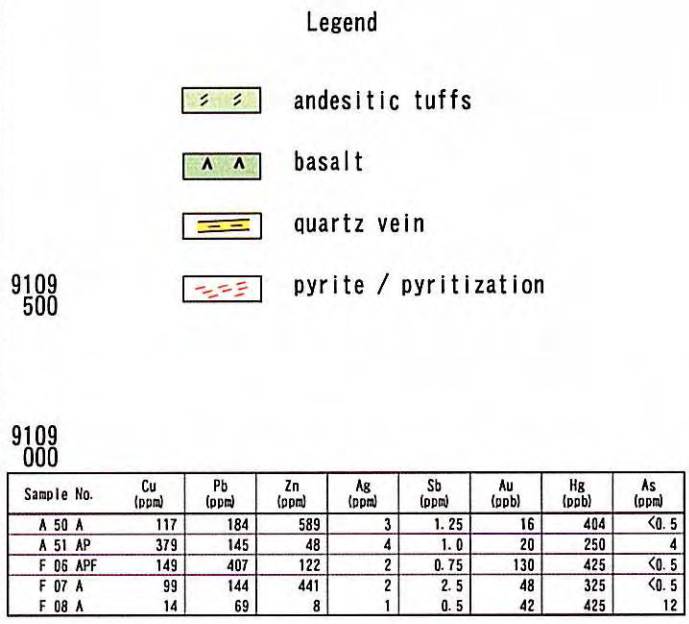
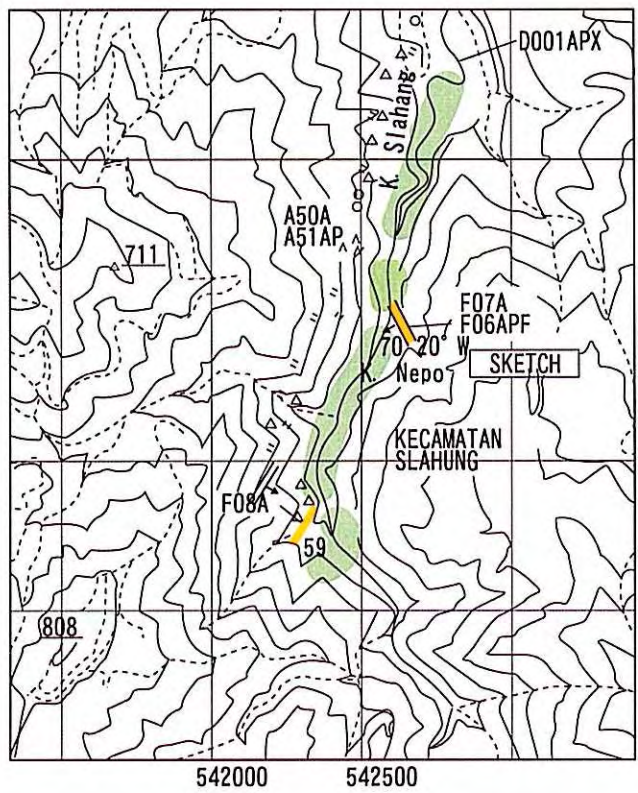


Fig. 2-12 Homogenization Temperatures and Salinities of Fluid Inclusions



K. Nepo Mineralized Area
 Fig. 2-13 Sketch of the Mineralized Area (1) Tegalombo Area (1)

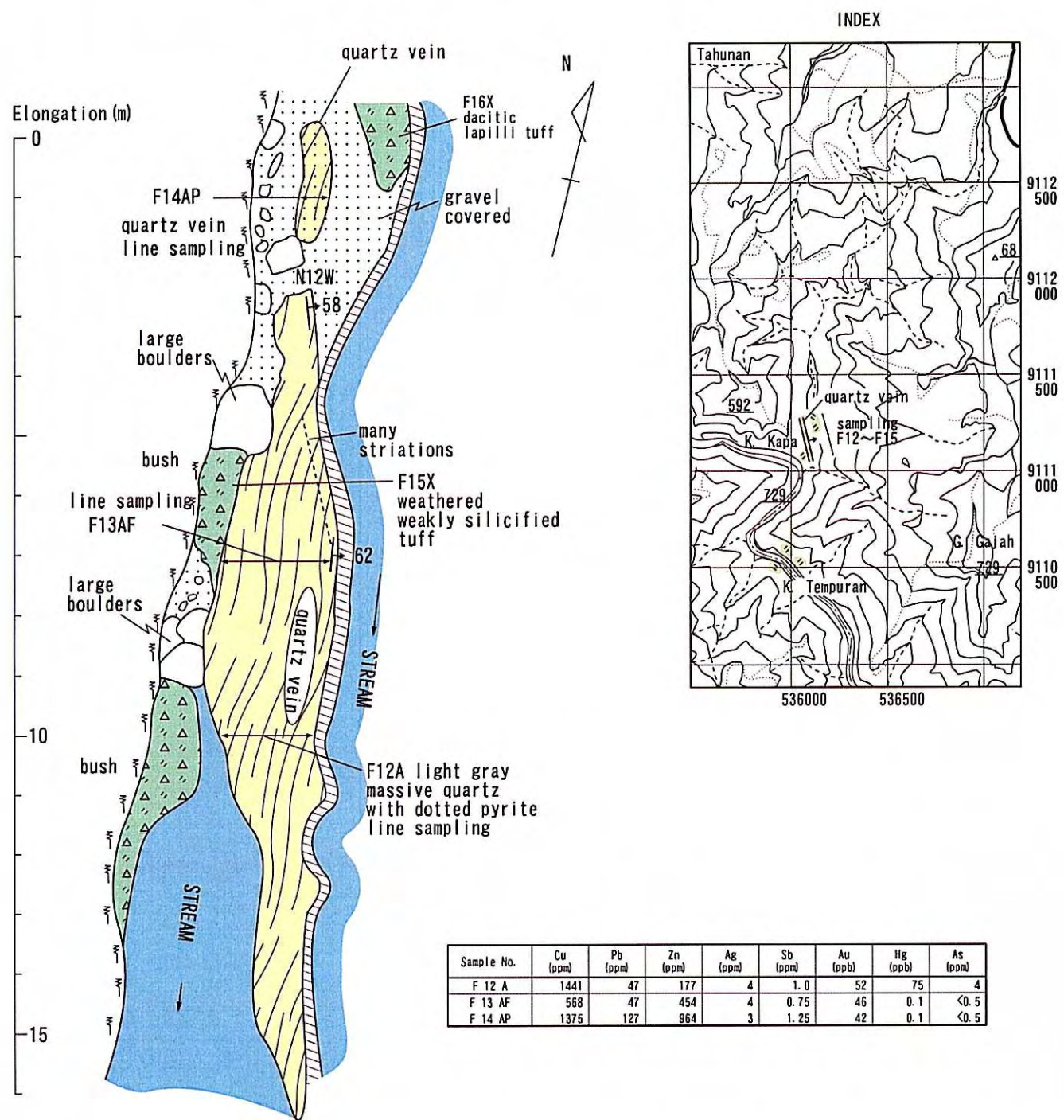
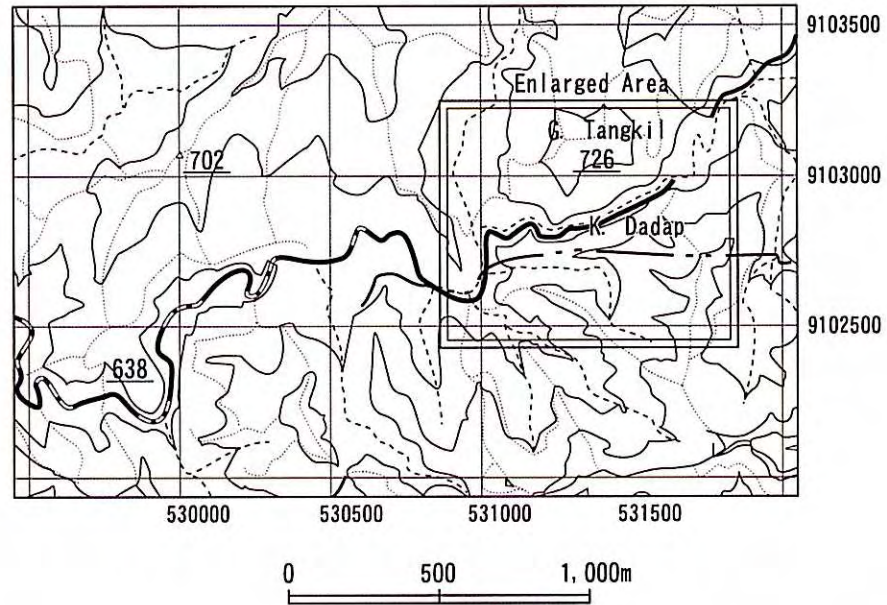


Fig. 2-14 Sketch of Mineralized Zone (2) Tegalombo Area (2)



Sample No.	Cu (ppm)	Pb (ppm)	Zn (ppm)	Ag (ppm)	Sb (ppm)	Au (ppb)	Hg (ppb)	As (ppm)
A 82 AP	94	12	2253	2	<0.5	16	2925	16
A 83 AP	281	357	11210	6	1.25	30	793	12

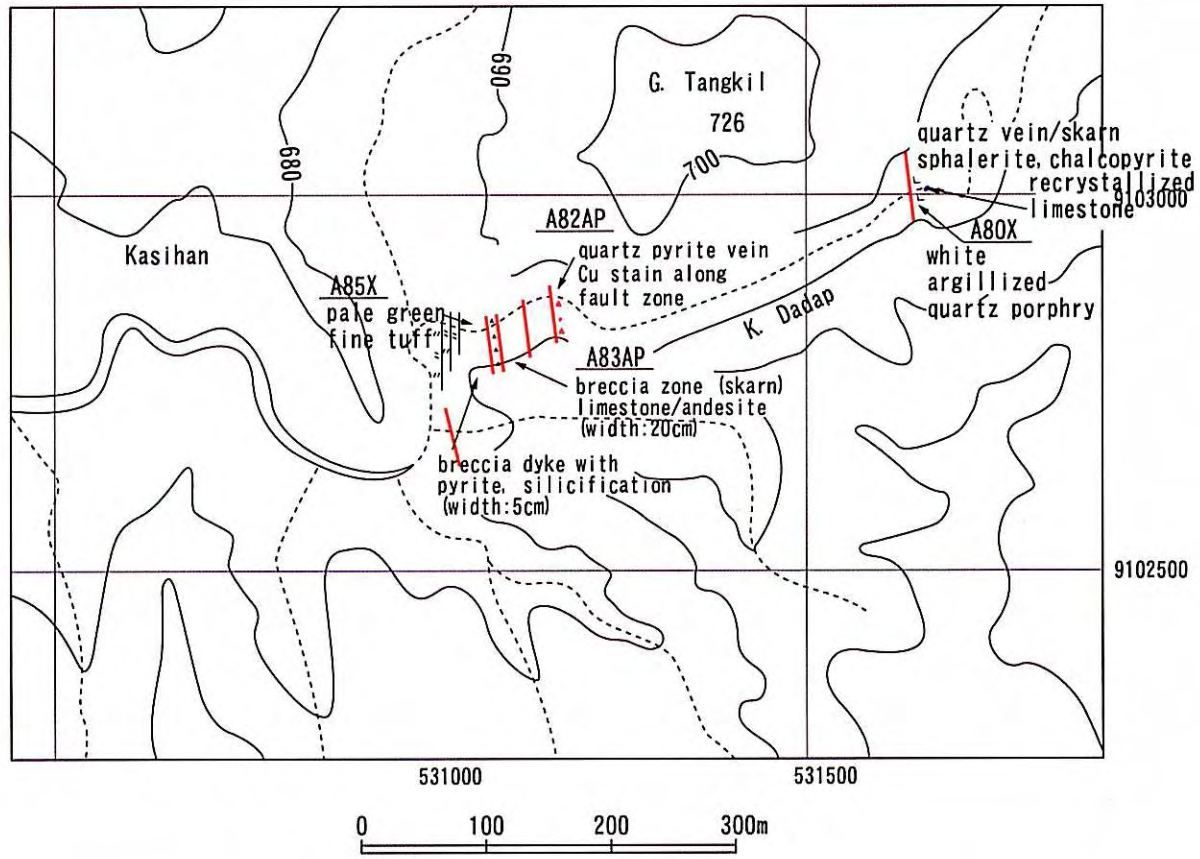
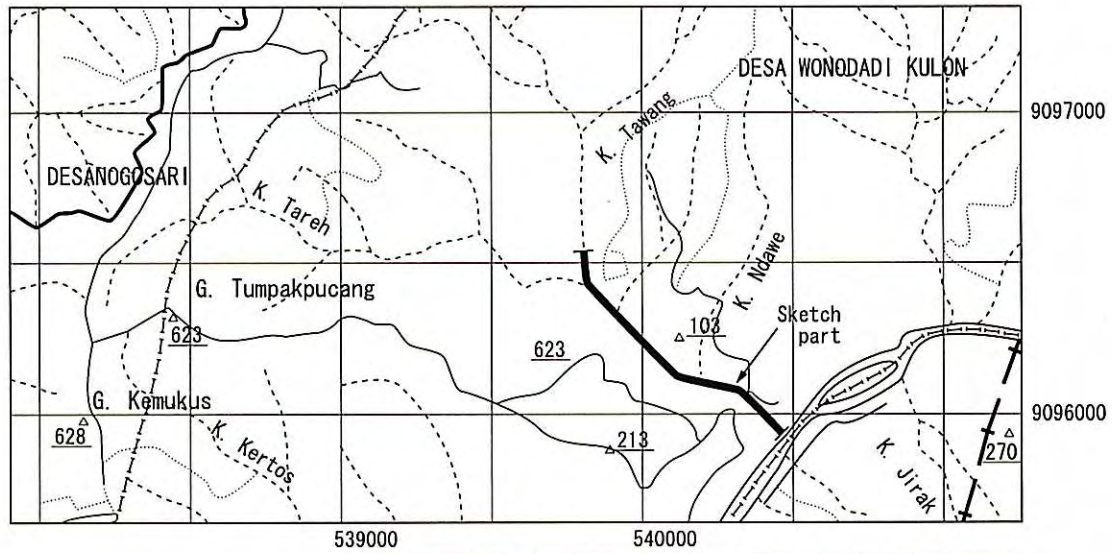


Fig. 2-15 Sketch of Mineralized Area, Kasihan Area



Sample No.	Cu (ppm)	Pb (ppm)	Zn (ppm)	Ag (ppm)	Sb (ppm)	Au (ppb)	Hg (ppb)	As (ppm)
B 21 APX	20	48	96	2	1.25	42	250	24
B 23 APX	36	79	151	3	0.5	116	250	580
F 29 A	857	20	12	6	1.5	52	175	4
F 31 AX	865	4598	14160	18	1.25	288	1725	64
F 34 A	75	63	422	3	1.5	44	0	48
F 35 A	11	34	164	2	1.25	50	75	
F 38 A	68	43	408	5	1.0	58	0	88

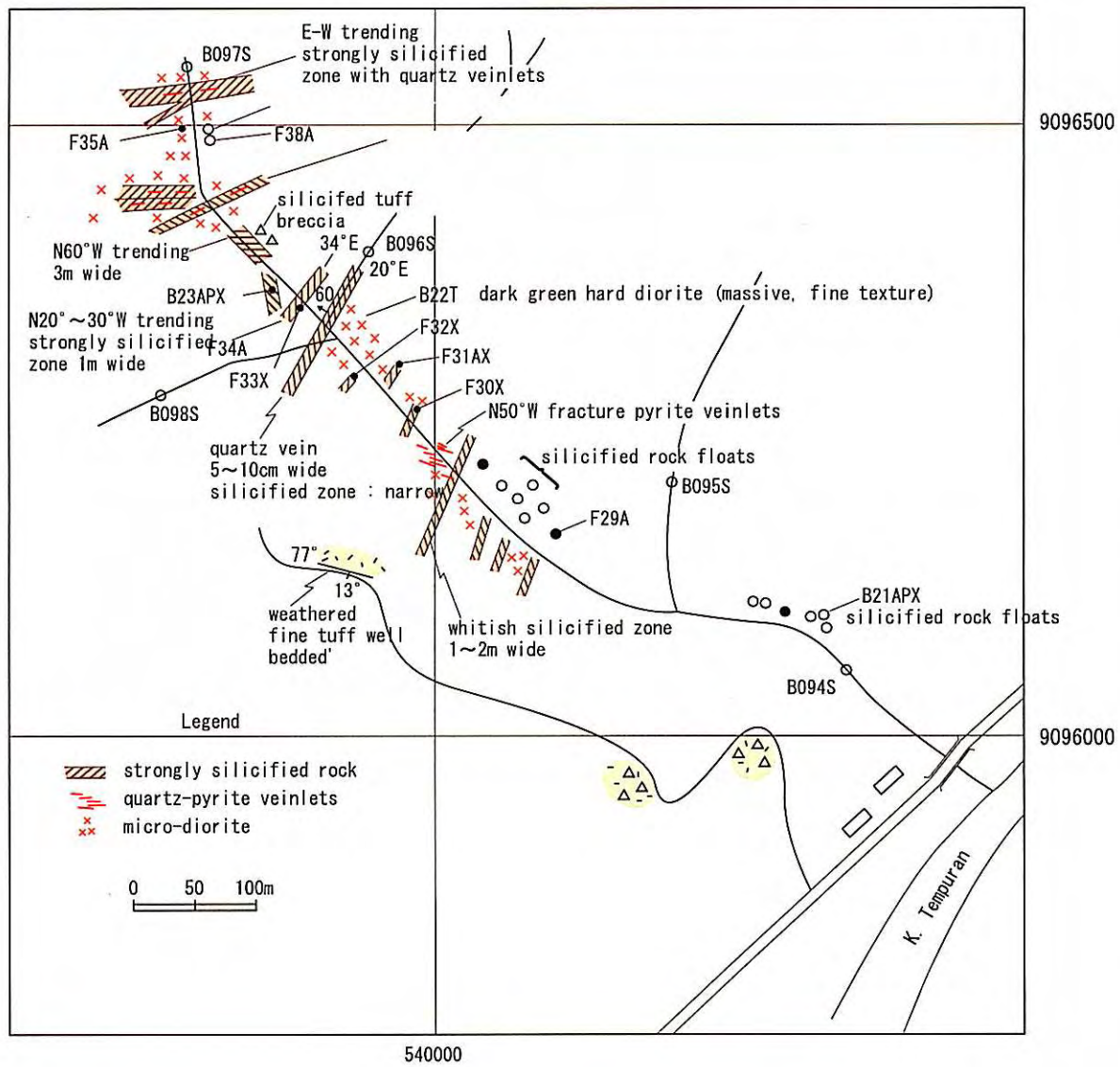
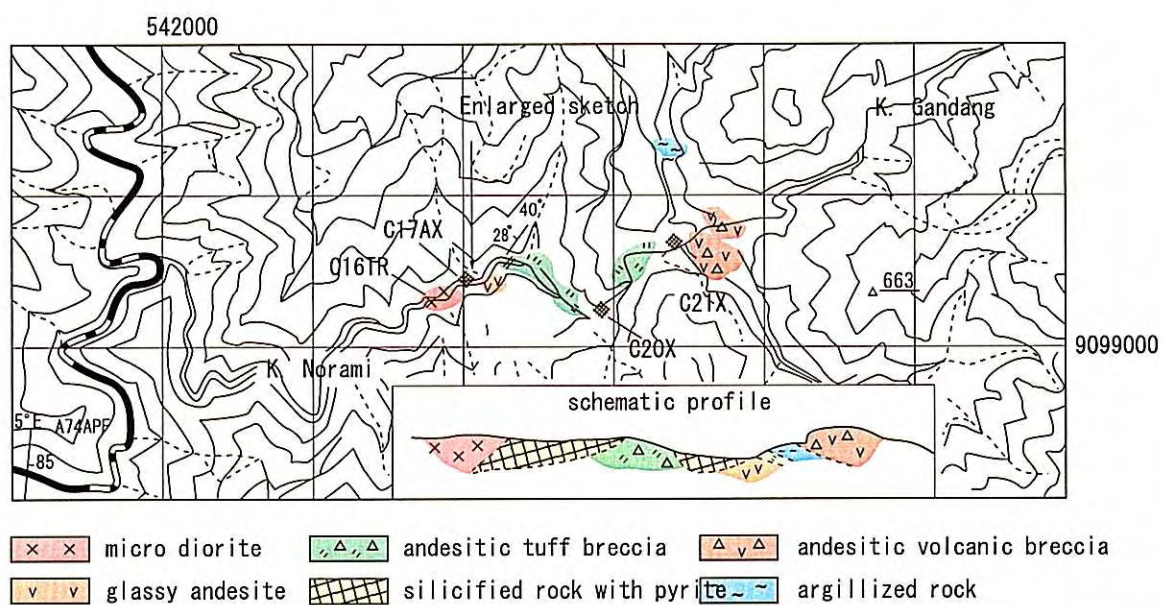


Fig.2-16 Sketch of Mineralized Area, Lorog River Area (1)

K. Ngrami ~ K. Gandang Mineralized Area



Sample No.	Cu (ppm)	Pb (ppm)	Zn (ppm)	Ag (ppm)	Sb (ppm)	Au (ppb)	Hg (ppb)	As (ppm)
A 74 APF	561	671	16960	4	1.25	78	942	24
C 17 AX	20	64	29	3	1.0	40	2075	4

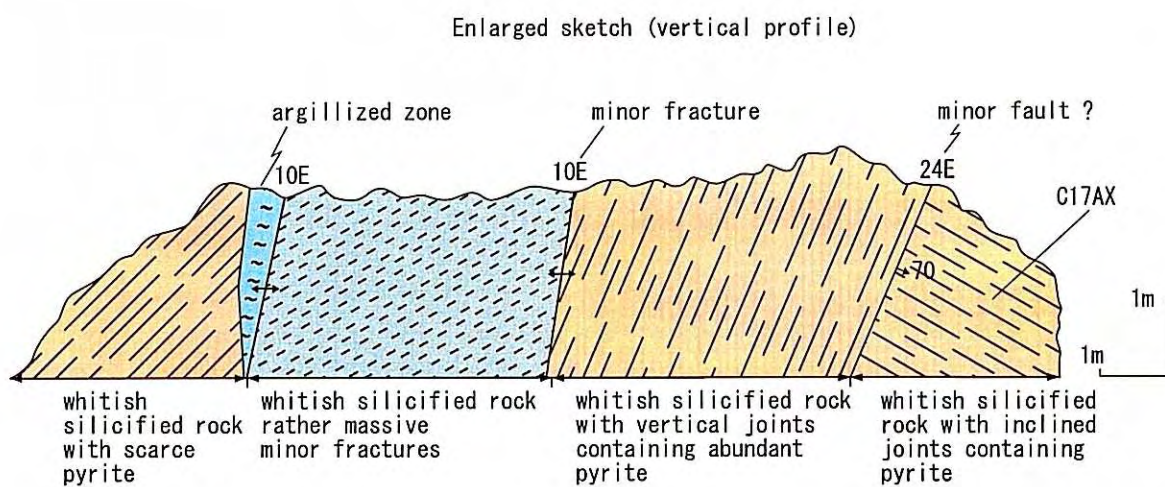
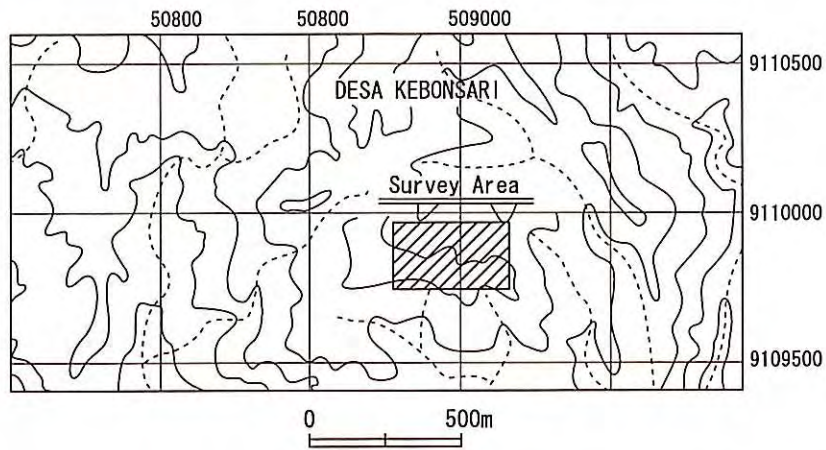
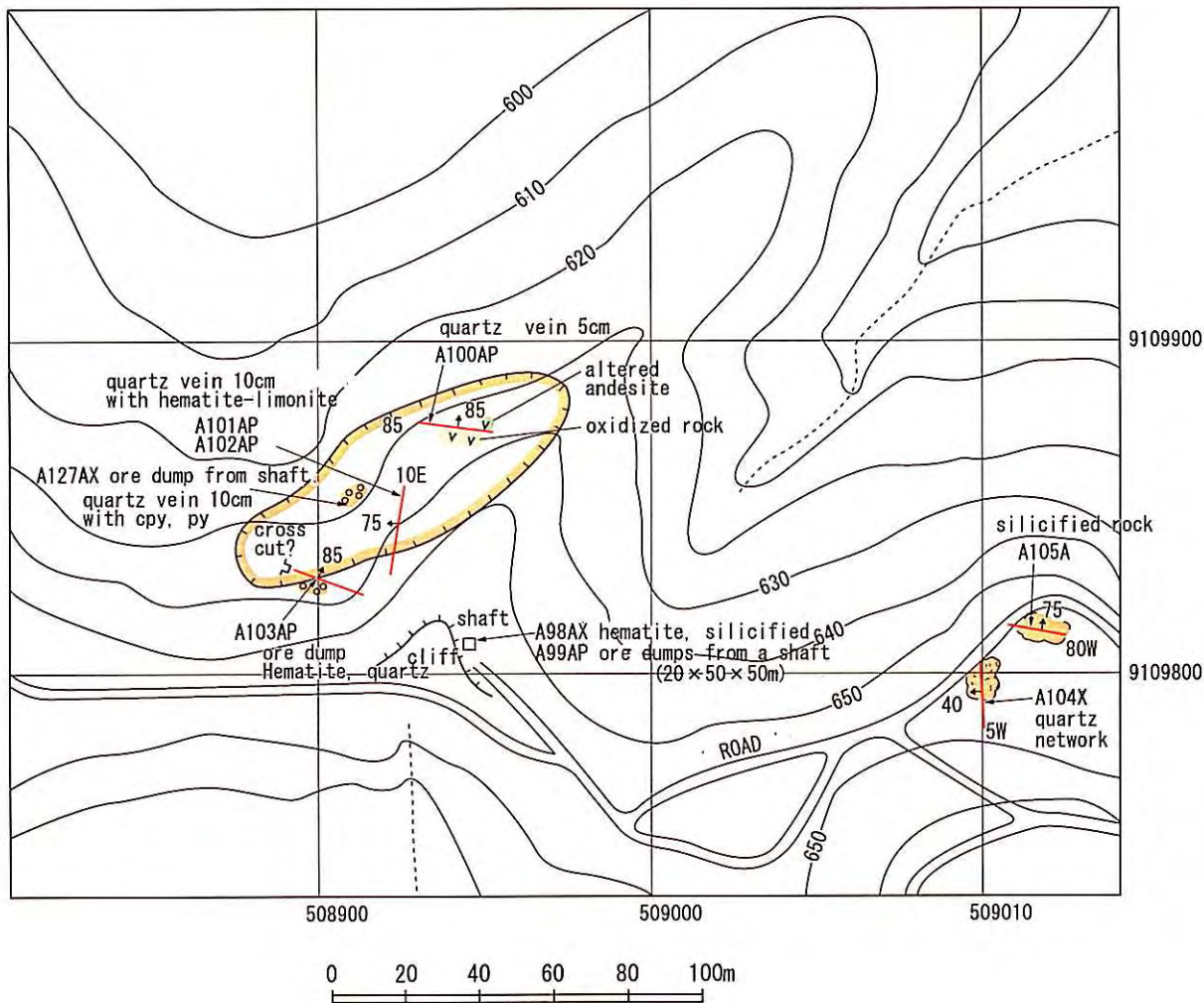


Fig. 2-17 Sketch of Mineralized Area, Lorog River Area(2)

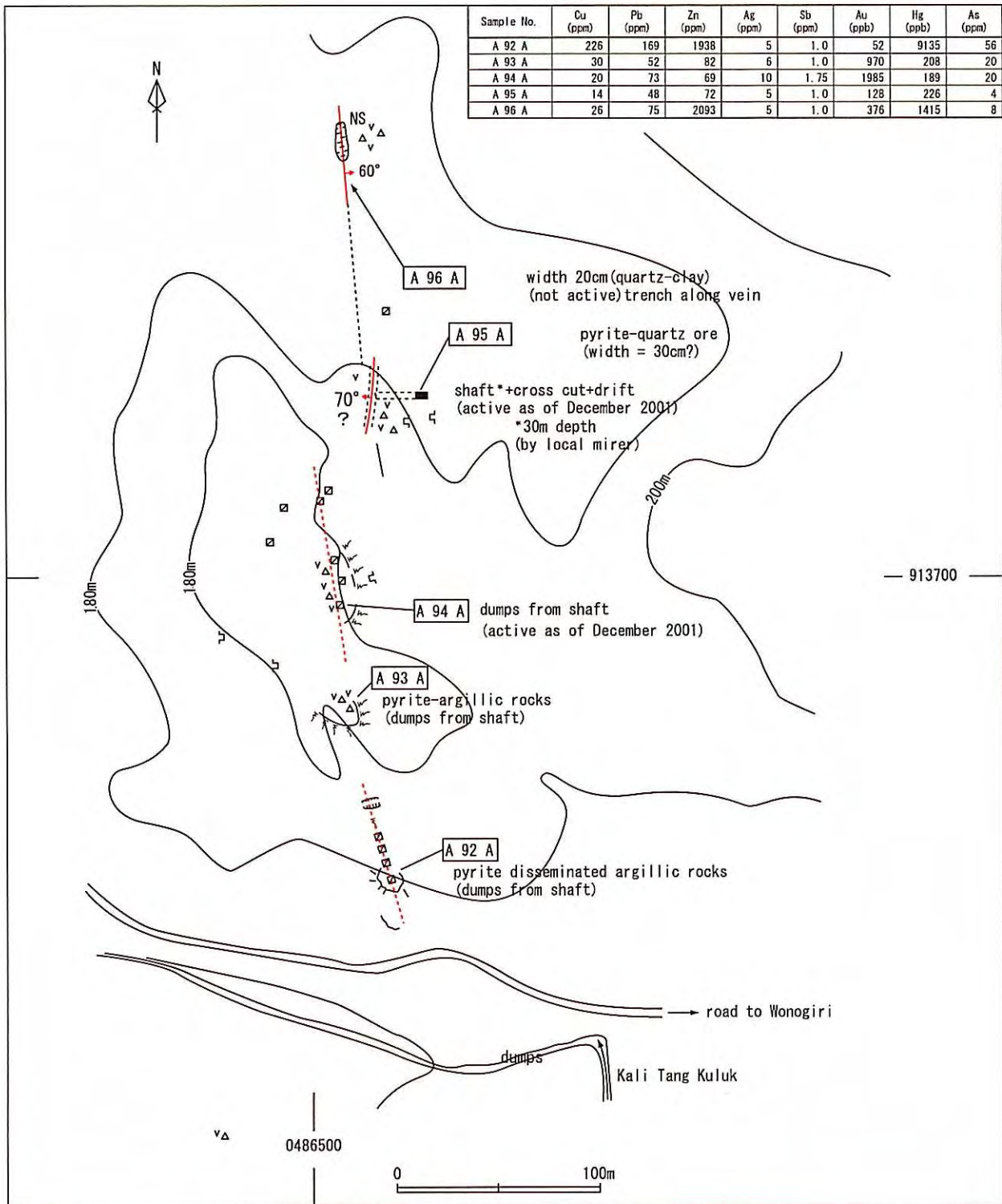


Sample No.	Cu (ppm)	Pb (ppm)	Zn (ppm)	Ag (ppb)	Sb (ppm)	Au (ppm)	Hg (ppb)	As (ppm)
A 98 A	16	14	26	2	1.25	18	981	<0.5
A 99 A	10	22	19	2	1.25	14	212	4
A 100 AP	558	18	39	2	1.5	700	226	8
A 101 A	3126	45	27	3	1.0	434	302	8
A 102 A	1219	17	73	2	2.0	28	906	4
A 103 AP	43	6	8	2	0.75	68	283	12
A 105 A	726	25	40	3	4.0	18	1340	4
A 127 A	23640	115	128	69	1.0	170	113	<0.5



Near Kebonsari

Fig.2-18 Sketch of the Mineralized Area, Punung Area



Legend

- shaft
- ==== tunnel (estimated)
- vΔ outcrop (weathered)
- ▬ Trench
- ⊥ portal (from existing data)
- vΔ andestitic tuff brecca
- ~200~ Contor (mabove sea level)

Fig.2-19 Sketch of the Mineralized Area, Selogiri Area

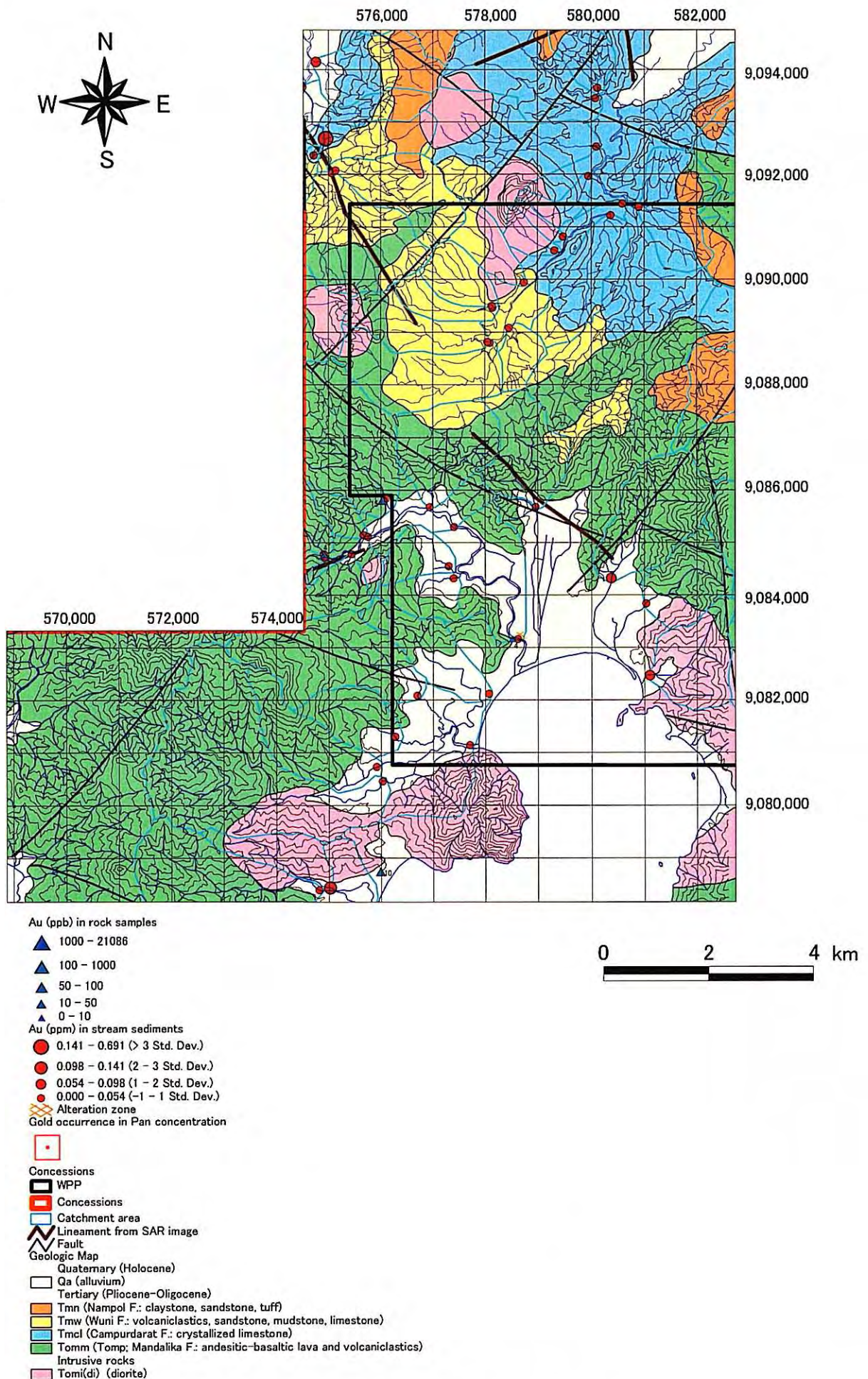


Fig. 2-20 Survey Results of Sentul East Area

