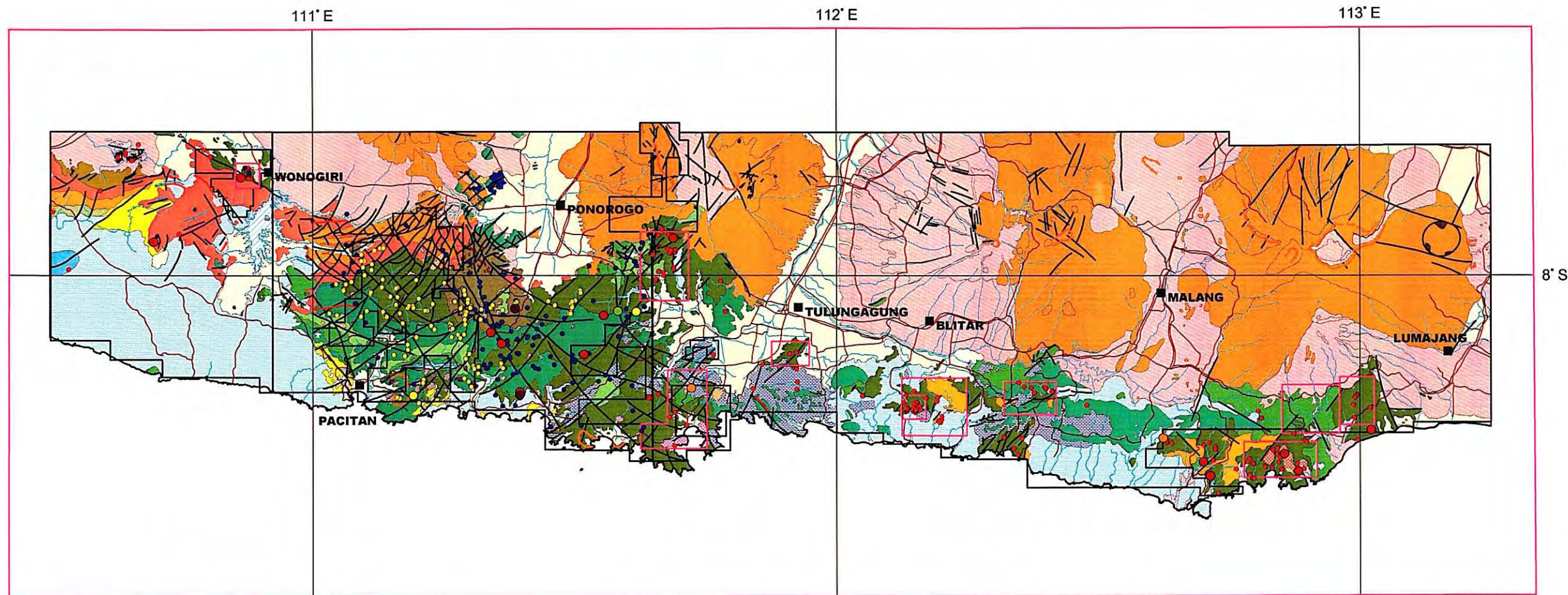


Fig.2-7 Extracted Lineaments of the Survey Area





- K Ar age determination (Ma)**
- 4 – 6
  - 6 – 15
  - 15 – 25
  - 25 – 55
  - 55 – 89
  - Rock sampling location (semi-detailed survey)
  - Rock sampling location (phase1 Regional Survey)
  - Rock sampling location (phase2 Regional Survey)
- Mineralized Zone**
- Survey Area**
- City**
- Dike**
- Crater rim**
- Fold**
- ~ anticline
  - ~ syncline
  - ~ Fault
  - ~ road
  - ~ River



- Geologic Map**
- ~ Lake
  - ~ Quaternary (Holocene)
  - ~ Alluvium (Qa)
  - ~ Volcanic and Sedimentary rocks (Qaf, Qal, Qt, Qvm, Qvl, Qvll, Qpk, Qd, Qhvp, Qvk, Qvlh, Qv(p), Qptm, Qvtr, Qvs, Qvb, Qtt, Qvaw, Qas, Qlv, Qlks, Qls, Ql, Qc)
  - ~ Quaternary (Pleistocene)
  - ~ Volcanic and Sedimentary rocks (Qjt, Qvjt, Qvjl, Qvsl, Qvjb, Qvbl, Qvbt, Qav, Qp(g), Qp, Qjd, Qj, Qjd, Qj, Qjk, Qjn, Qpvp, Qpvk, Qpva, Qpat, Qp(r), Qp(t), Qpkb, Qlk, Qpw, Qpvb, Qpvt, Qvt, Qvj, Qvp)
  - ~ Tertiary (Pliocene-Oligocene)
  - ~ Tpl (Laparak F.: sandstone, mudstone, marl, limestone)
  - ~ Tmpk (Kepak F.: limestone)
  - ~ Tmwl (Wonosari F.: limestone)
  - ~ Tmo (Oyo F.: sandstone, mudstone)
  - ~ Tmp (Puger F.: limestone, sandstone)
  - ~ Tmcs (Sampung F.: calcareous sandstone, sandstone)
  - ~ Tmsl (Sampung F.: marl, limestone)
  - ~ Tmn (Nampol F.: tuffaceous sandstone, mudstone, limestone)
  - ~ Tmss (Sambipitu F.: sandstone, mudstone)
  - ~ Tmng (Nglanggran F.: andesitic-basaltic lava and volcanics)
  - ~ Tmw (Wuni F.: volcanics, sandstone, mudstone, limestone)
  - ~ Tmj (Jaten F.: sandstone, mudstone, limestone)
  - ~ Tms (Semilir F.: tuff, tuffaceous sandstone)
  - ~ Tmcl (Campurdarat F.: limestone, mudstone)
  - ~ Tomt (Mandalika F.: tuff, tuff breccia)
  - ~ Tomw (Watupatok F.: andesitic-basaltic lava and volcanics)
  - ~ Toma (Arjosari F.: conglomerate, sandstone, volcanics)
  - ~ Tomd (Dayakan F.: sandstone, mudstone)
  - ~ Tomk (Arjosari F.: conglomerate, sandstone, volcanics)
  - ~ Tomm (Tomp; Mandalika F.: andesitic-basaltic lava and volcanics)
  - ~ Tertiary (Eocene)
  - ~ Tew (Gamping Wungkal F.: sandstone, mudstone, marl)
  - ~ Cretaceous
  - ~ KTm (metamorphic rocks)
  - ~ Intrusive rocks
  - ~ Qi(a,b) (andesite, basalt)
  - ~ Qpp (andesite)
  - ~ Qppr (andesite)
  - ~ Tpdj (diorite)
  - ~ Tmid (diorite)
  - ~ Tm(a) (andesite)
  - ~ Tm(d) (dacite)
  - ~ Tomi(an) (andesite)
  - ~ Tomi(da) (dacite)
  - ~ Tomi(a,d) (andesite, dacite)
  - ~ Tomi(ba) (basalt)
  - ~ Tomi(di) (diorite)
  - ~ Tomi(gd) (granodiorite)

Fig.2-9 Location Map of Age Determination Samples

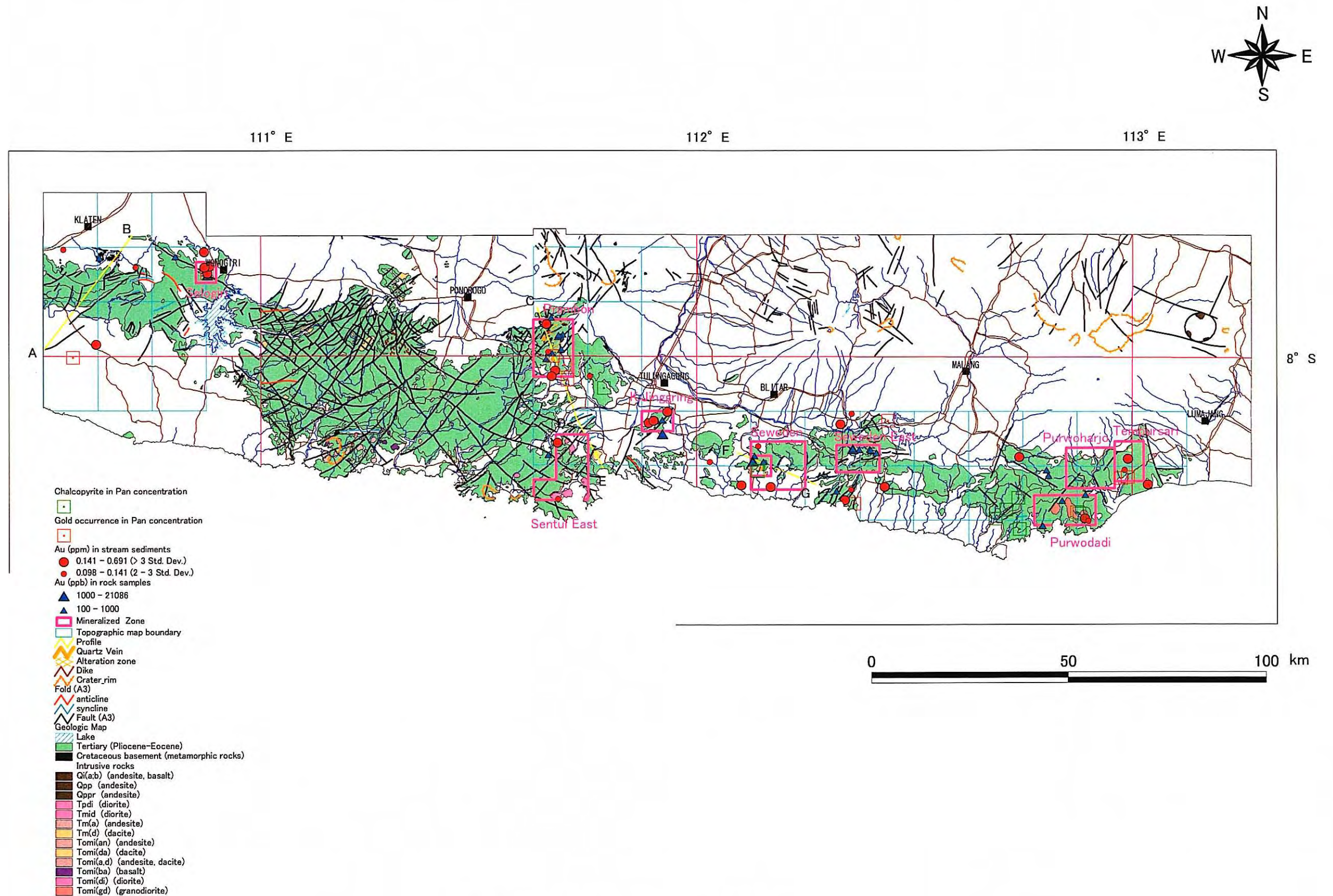


Fig. 2-10 Mineralized Zones of the Survey Area

