

- Concessions : Wpp_jatim_region.shp
- Survey_area.shp
- Mineral occurrence
- Geology.shp
- lake
- Qa: Alluvium, Talus deposits
- Qv: Quaternary volcanics
- Ql: Lahar deposit
- Tml: Miocene-Pliocene limestone (Wonosari Formation, etc.)
- Tmn : Miocene sediments (Nampol Formation, etc.)
- Tm: Miocene volcanics and sediments (Semilir Formation, etc.)
- Tom: Oligocene-Miocene volcanics and sediments (Mandalika Formation, etc.)
- Tomi: Oligocene-Miocene Intrusives
- Tew: Eocene volcanics (Wungai Formation)
- Tp: Diorite (Pendul diorite)
- KTml: PreTertiary volcanics

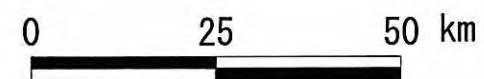


Fig.2-2 Compilation Map of Existing Data

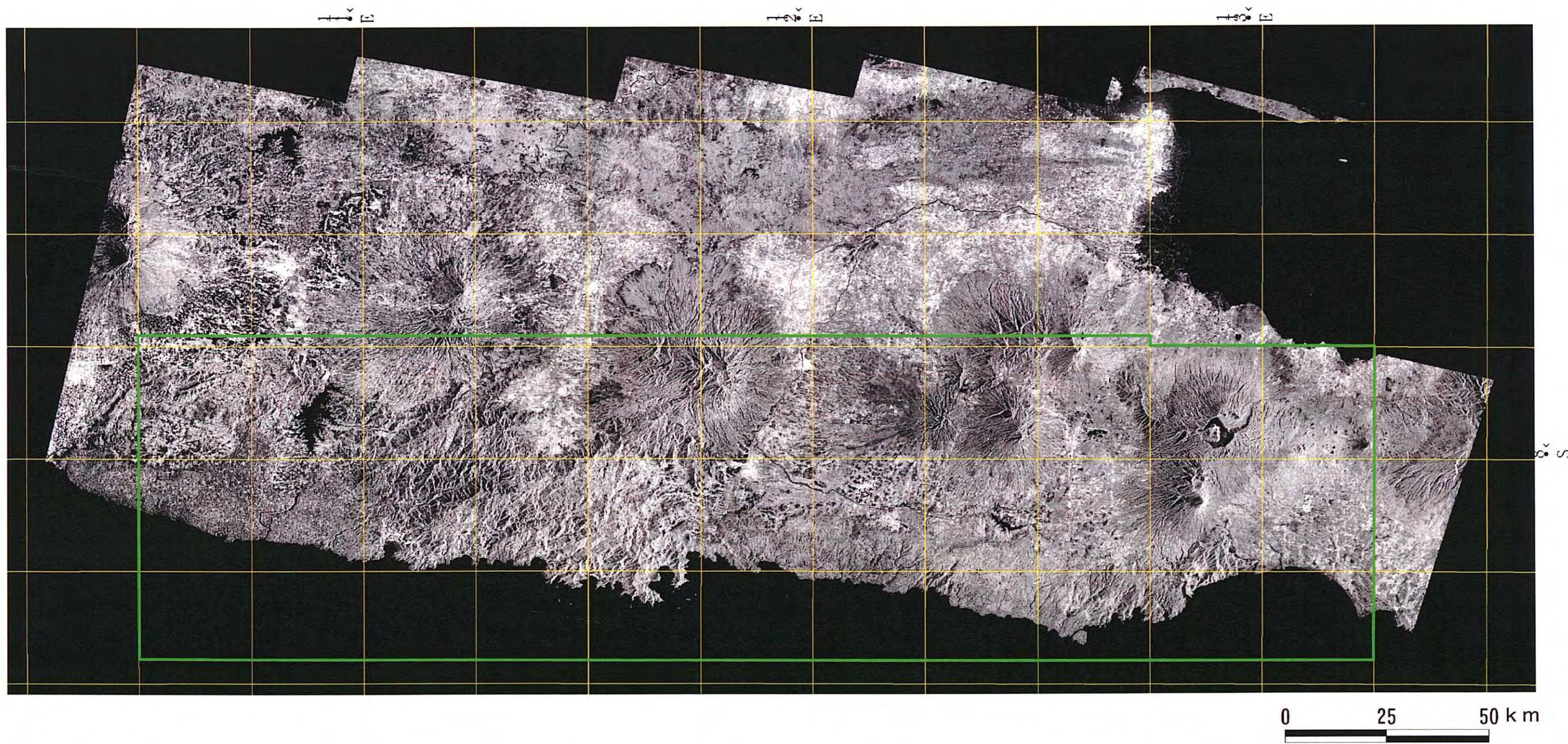


Fig. 2-3 SAR Mosaic Image of the Project Area

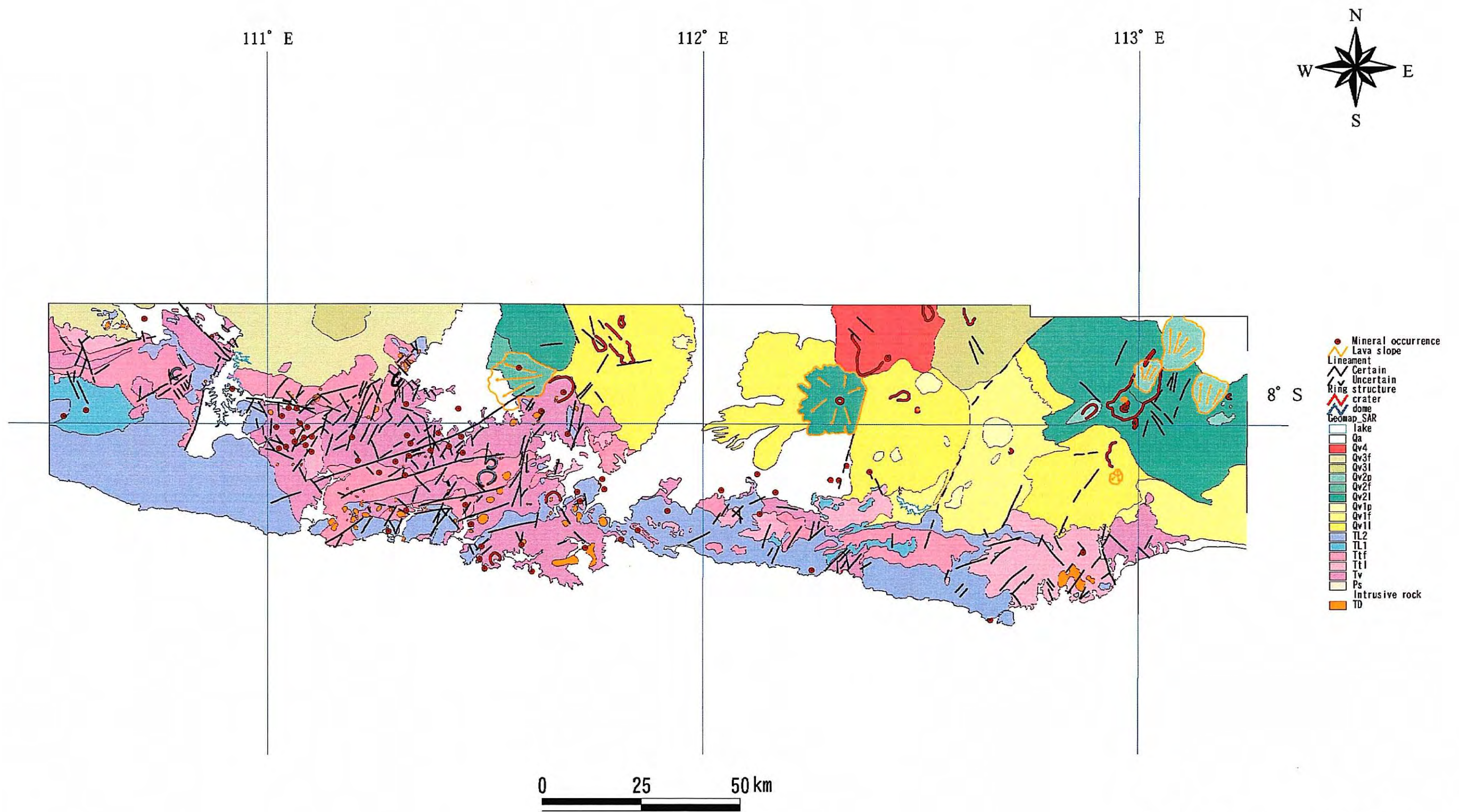


Fig. 2-4 SAR Image Analysis of the Project Area

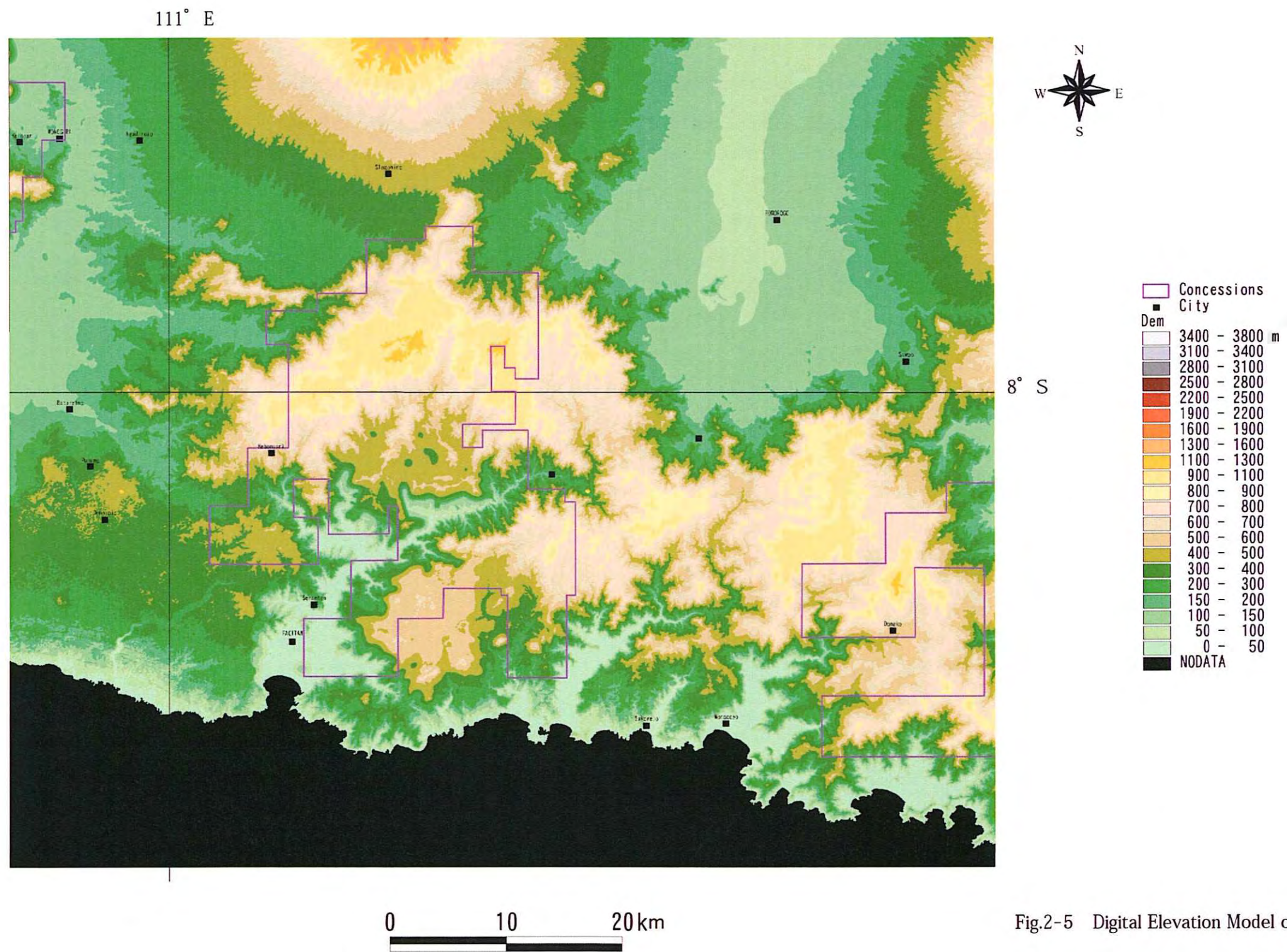


Fig.2-5 Digital Elevation Model of the Survey Area

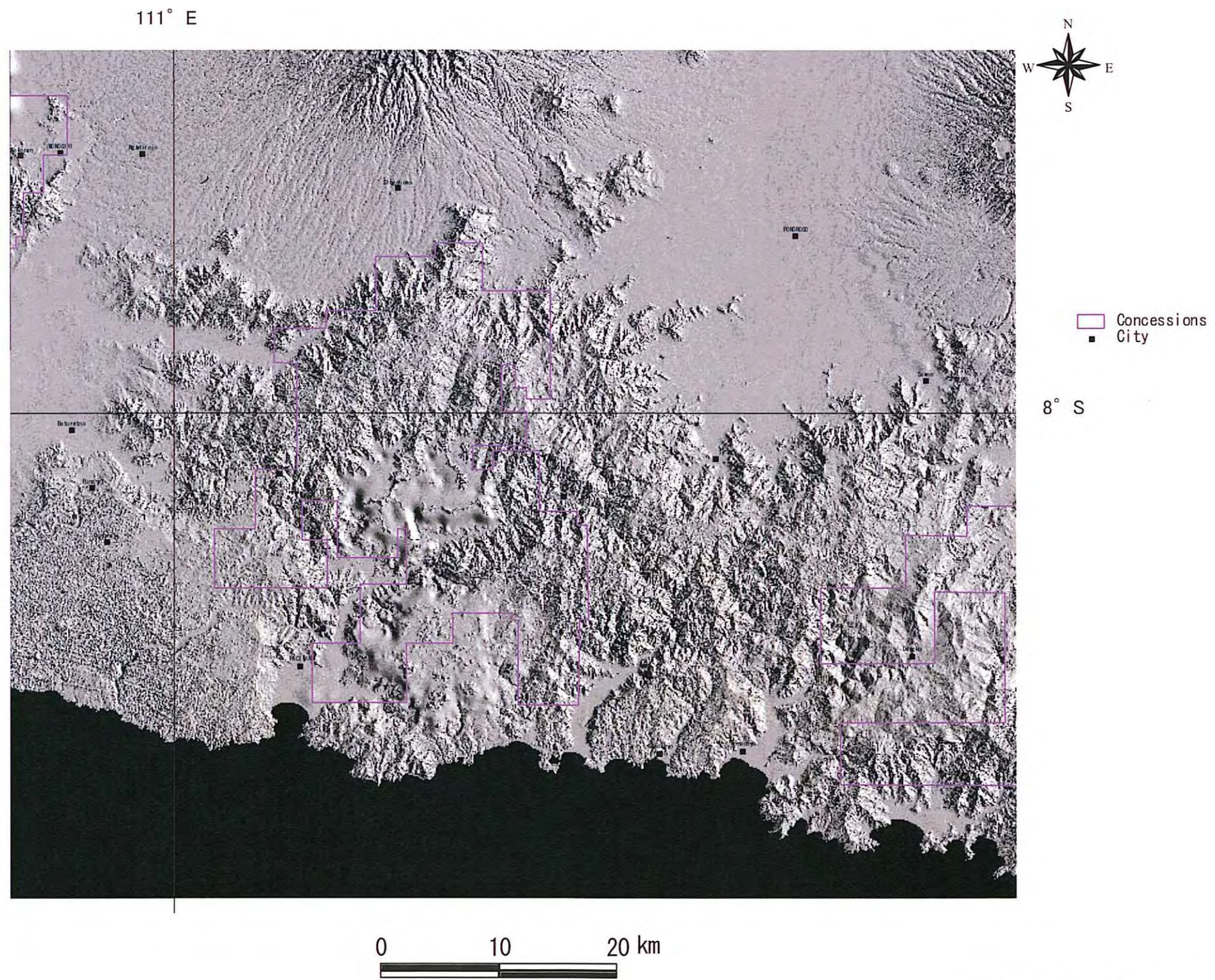


Fig.2-6 Shade Image by Multi-directional Light Sources