

# Plan of operations for activity 1

Output (1) : Practical techniques for planting and tending trees for establishment of farm forest are provided.

(3rd Revised, June 2001)

Activities	Targets/Indicators	Schedule																Responsible persons in the project	Inputs	Remarks				
		1998				1999				2000				2001							2002			
		I	II	III	IV	I	II	III	IV	I	II	III	IV	I	II	III	IV				I	II	III	IV
1. Develop practical technique for establishment of farm forest in semi-arid areas 1.1 Develop technology in the Pilot Forest																								
1.1.1 Development of basic tree planting technologies																								
1.1.1.1 Seeds germination	Melia volkensii, Terminalia brownii																					Muok, Kyalo, Okamoto	labour, consumable, fuel, tools	
1.1.1.2 Root system	root pattern and drought tolerant																					Kyalo, Muok, Okamoto	labour, consumable, fuel, tools	
1.1.1.3 Insect/disease control	Degree of damage comparison																					Kyalo, Muok, Okamoto	labour, consumable	
1.1.1.4 Response to challenges in on-farm and extension	Mulching and Intercropping experiments Establish plot on melia planting methods Soil map of pilot forest																					Auka, Muok, Mihara Auka, Muok, Mihara Kichia, Kyalo, soil technician, Auka, Muok, Mihara, Okamoto	labour, consumable, fuel, tools, seed labour, consumable, fuel, tools labour, consumable, short term expert	new activity
1.1.2 Verification of intensive planting management																								
1.1.2.1 Water catchment	optimum type, size/growth, erosion																					Auka, Muok, Mihara	labour	
1.1.2.2 Mulching	necessity of mulching/ growth																					Auka, Muok, Mihara	labour	
1.1.2.3 Weeding	optimum frequency/growth, survival clear weeding, slash/growth, survival																					Auka, Muok, Mihara Auka, Muok, Mihara	labour labour	
1.1.2.4 Water regime																								
1.1.2.4.1 Soil moisture	1 ha/treatment-soil moisture relations/growth																					Auka, Muok, Mihara	labour, machine, fuel, seedling, short term expert	
1.1.2.4.2 Sun heat shield effect and mulching	0.3 ha/effect of mulching/growth																					Auka, Muok, Mihara	labour, machine, fuel, seedling, short term expert	
1.1.2.4.3 Water stress	pruning-water stress relations/correlation																					Auka, Muok, Mihara	labour, machine, fuel, seedling, short term expert	
1.1.2.4.4 Evapo-transpiration	water consumption/sap flow																					Auka, Muok, Mihara	labour, machine, fuel, seedling, short term expert	
1.1.3. Verification of planting technology																								
1.1.3.1 Monitoring of existing spacing plot	optimum spacing/growth, survival																					Auka, Muok, Mihara	labour, consumable	
1.1.3.2 Study pruning of existing plot	effect of pruning/growth, survival																					Auka, Muok, Mihara	labour, consumable	
1.1.3.3 Study thinning of existing plot	effect of thinning/growth, die-back																					Auka, Muok, Mihara	labour, consumable	
1.1.3.4 Study coppicing of existing plot	coppicing ability /no. of coppices																					Auka, Muok, Mihara	labour, consumable	
1.1.4 Establishment of Wildfruits demonstration orchard	trials on 20 spp./growth, marketability using grafting, cutting and mycorrhiza																					Auka, Muok, Kyalo, Mihara Okamoto	labour, machine, fuel, seedling, consumable	
1.1.5 Supporting activity of technology development																								
1.1.5.1 Weather monitoring data	weather data																					Kyalo, Auka, Muok, Okamoto, Mihara	labour, tools, monitoring	
1.1.5.2 Collection of references	references/no. of references																					Auka, Kyalo, Mihara, Okamoto	labour, machine, fuel, consumable	
1.1.5.3 Management of experimental plot and road network	road management, experimental plot management																					Auka, Muok, Mihara	labour, machine, fuel, consumable	
1.1.5.4 Seed collection, production and supply of seedling	necessary no. /no. of seedlings necessary weight/ weight of seed collected																					Kyalo, Okamoto	labour, fuel, seed, purchase, tools, mater	production of seedling continued
1.1.5.5 Management of Tiva arboretum	no. of spp./weight of seed supplied																					Kyalo, Okamoto	labour, consumable, fuel, tools	completed
1.1.5.6 Protection of human and animal damage	1000 ha./ decrease of damage/ number of damages																					Auka, Kyalo, Mihara, Okamoto	equipment, fuel, labour, consumable	
1.1.5.7 Study on cost analysis	work efficiency table/table																					Auka, Kyalo, Muok, Mihara, Okamoto	labour, consumable	

Note : 1.1st quarter is January to March, 2nd quarter is April to June, 3rd quarter is July to September and 4th quarter is October to December. The project commenced on 26th November 1997.  
2. First name in the row is the activity leader.





Plan of operations for activity 2

Output (2) : Appropriate methods of establishing farm forests are developed

(3rd Revised, June 2001)

Activities	Targets/Indicators	Schedule												Responsible persons in the project	Inputs	Remarks								
		1998			1999			2000			2001						2002							
		I	II	IV	I	II	IV	I	II	IV	I	II	IV				I	II	IV					
2.4 Establish farm forests																								
2.4.1 Train extension agents																								
2.4.1.1 Implement training courses	Number of TAs trained																							
2.4.1.2 Implement OJT through establishment of farm forests	Number of TAs trained																							
2.4.2 Select target farmers	Number of selected target farmers																							
2.4.3 Train target farmers	Number of target farmers trained																							
2.4.4 Conduct profile survey on selected targets	Number of target farm profiles																							
2.4.5 Design target farm forests	Number of designed farm forests																							
2.4.6 Establish farm forests	Number of established farm forests																							
2.4.7 Monitor the establishment of farm forests	Number of times monitored / reports																							
2.4.8 Record keeping	Number of records																							
2.5 Establish farmer to farmer extension system																								
2.5.1 Prepare program for farmer to farmer extension	Concept paper																							
2.5.2 Conduct and monitor farmer to farmer extension program	Number of farmers trained																							
2.6 Improve demonstration plots in Tiva (DEMO II)																								
2.6.1 Develop and demonstrate practical farm forestry related technologies	Number of technologies demonstrated																							
2.6.2 Conduct and monitor OJT program	Number of people trained																							
2.7 Feedback of technical knowledge of planting and tending into the technology development	Report including identified gaps																							
2.8 Mid-term evaluation	Mid-term evaluation report																							
2.9 Review of plan of farm forest establishment	Revised plan																							
2.10 Final evaluation and compilation of the result of the activities	Final evaluation report																							

Note : 1. 1st quarter is January to March, 2nd quarter is April to June, 3rd quarter is July to September and 4th quarter is October to December. The project commenced on 26th November 1997.  
 2. First name in the row is the activity leader.



## Achievement Chart

("A"= Completely achieved. / "B"= Mostly achieved. / "C"= Partly achieved, but not sufficient/ "D"= Not achieved)

PDM Code	Activities	Target	Personnel	Grade (A/B/C/D)	Comments
Output 1	Practical techniques for planting and tending trees for establishment of farm forest are provided.			A	Achieved.
Activity 1	Develop practical techniques for establishment of farm forest in semi-arid areas			A	Achieved.
Activity 1-1	Develop technology in the Pilot Forest			A	Achieved.
Activity 1-1-1	Development of basic tree planting technologies			A	Germination method of the two target species was achieved to the practicable level.
Activity 1-1-1-1	Seeds germination	Melia volkensii, Terminalia brownii		A	39 species were the targets on the activity and more species will be studied depending on farmer's choice.
Activity 1-1-1-2	Root system	root pattern and drought tolerance		B	The activity is still continuing and will not have finished perfectly by the end of the project.
Activity 1-1-1-3	Insect/disease control	Degree of damage comparison		A	5 technology were retested.
Activity 1-1-1-4	Response to challenges in on-farm and extension	Number of technology retested		A	Achieved.
Activity 1-1-2	Verification of intensive planting management			A	Achieved.
Activity 1-1-2-1	Water catchment	optimum type, size/growth, erosion		A	Achieved.
Activity 1-1-2-2	Mulching	necessity of mulching/ growth		A	Achieved.
Activity 1-1-2-3	Weeding	optimum frequency/growth, survival clear weeding, slash/growth, survival		A	Achieved.
Activity 1-1-2-4	Water regime			A	Mostly achieved. The trial is on going and on schedule.
Activity 1-1-2-4-1	Soil moisture	1ha/treatment-soil moisture relations/growth		A	Achieved.
Activity 1-1-2-4-2	Sun heat shield effect and mulching	0.3ha/effect of mulching/growth		A	Mostly achieved. The activity in the pilot forest was finished on schedule and now analyzed in Japan. Good result is expected.
Activity 1-1-2-4-3	Water stress	pruning-water stress relations/correlation		A	Mostly achieved. The activity in the pilot forest was finished on schedule and now analyzed in Japan. Good result is expected.
Activity 1-1-2-4-4	Evapo-transpiration	water consumption/sap flow		A	Achieved.
Activity 1-1-3	Verification of planting technology			A	Achieved.
Activity 1-1-3-1	Monitoring of existing spacing plot	optimum spacing/growth, survival		A	Achieved.
Activity 1-1-3-2	Study pruning of existing plot	effect of pruning/growth, survival		A	Achieved.
Activity 1-1-3-3	Study thinning of existing plot	effect of thinning/growth, die-back		B	The activity will not have been finished perfectly by the end of the project, and will be continued by KEFRI.
Activity 1-1-3-4	Study coppicing of existing plot	coppicing ability /no. of coppices		B	12 common species were tested.
Activity 1-1-4	Establishment of Wildfruits demonstration orchard	trials on 20 spp./growth, marketability using grafting, cutting and mycorrhiza		A	Achieved.

## Achievement Chart

("A"= Completely achieved. / "B"= Mostly achieved. / "C"= Partly achieved, but not sufficient/ "D"= Not achieved)

PDM Code	Activities	Target	Personnel	Grade (A/B/C/D)	Comments
Activity 1-1-5	Supporting activity of technology development			A	Monitoring with appropriate method.
Activity 1-1-5-1	Weather monitoring data	weather data/weather data		A	70-80 references will be collected by the end of the project.
Activity 1-1-5-2	Collection of references	references/no. of references		A	Appropriately managed.
Activity 1-1-5-3	Management of experimental plot and road network	road management, experimental plot management		A	Achieved.
Activity 1-1-5-4	Seed collection, production and supply of seedling	necessary no. /no. of seedlings necessary weight/ weight of seed collected		B	Some tree species require more time for study.
Activity 1-1-5-5	Management of Tiva arboretum	no. of spp./weight of seed supplied		B	The damages are decreasing but no data analysis has been done.
Activity 1-1-5-6	Protection of human and animal damage	1000 ha / decrease of damage/ number of damages		A	Achieved.
Activity 1-1-5-7	Study on cost analysis	work efficiency table/table		A	Achieved.
Activity 1-2	Verify practical technologies by on-farm experiments			A	Achieved.
Activity 1-2-1	Farmers selection			A	Data collection and farmers selection was properly done.
Activity 1-2-1-1	Collection of physical and weather condition data	stratification of area/map		A	15 farmers were selected and they finished the activity.
Activity 1-2-1-2	Selection of representative farmers	No. of selected farmers		A	Technical workshops along with PO 2.4.3 has been held for several days every year.
Activity 1-2-1-3	Technology workshop for selected farmers	No. of workshops		A	Achieved.
Activity 1-2-2	Verification of the technologies developed in the pilot forest			A	Achieved.
Activity 1-2-2-1	Water harvesting (Micro-catchment)	Appropriate structure/type of structure		A	Achieved.
Activity 1-2-2-2	Site preparation	Appropriate method/no. of method		A	Achieved.
Activity 1-2-2-3	Hole size	Optimum size/no. of hole sizes		A	Achieved.
Activity 1-2-2-4	Weeding (complete, slashing, spot)	Weeding method/growth and survival		B	Test for some species has not yet been completed.
Activity 1-2-2-5	Pruning	Optimum pruning height/different pruning level		A	2 technologies were retested.
Activity 1-2-2-6	Experiments to respond to feedback from farm forest	Number of technology retested		A	Achieved.
Activity 1-2-3	Introduction of new technology			A	Farmers are accepting some practical technologies.
Activity 1-2-3-1	Fruit trees	Adaptability/ farmer acceptance		A	Achieved.
Activity 1-2-3-2	Fodder	Adaptability/ management		A	Results will be documented.
Activity 1-2-4	Weather Monitoring and soil sampling	1 rain gauge per selected farmer sample soil on each selected farm		A	Achieved.
Activity 1-3	Prepare technical manuals			A	The activities will be achieved by the termination.
Activity 1-3-1	Data collection and management	Collect, summarize and file data from all exp. plots and some farm forest		A	The activity will be achieved by the termination
Activity 1-3-2	Data analysis	All collected data		A	15 manuals are prepared or on going.
Activity 1-3-3	Preparation of manuals	Draft and prepare manual for publication/ 3 manuals.		A	8 manuals are prepared.

## Achievement Chart

("A"= Completely achieved. / "B"= Mostly achieved. / "C"= Partly achieved, but not sufficient/ "D"= Not achieved)

PDM Code	Activities	Target	Personnel	Grade (A/B/C/D)	Comments
Output 2	Appropriate methods of establishing farm forests and its extension are developed			A	Appropriate extension methods have been developed through actual farm forest establishment.
Activity 2	Design, establish, monitor and evaluate farm forest			A	Though there are some uncertain factors, most activities were achieved or on going as scheduled.
Activity 2-1	Establish farm forests in SFTP (II) target area			A	Most activities were achieved and some are monitored as scheduled.
Activity 2-1-1	Select target farmers	Number of selected target farmers		A	Achieved.
Activity 2-1-2	Conduct profile survey on selected targets	Number of target farm profiles		A	Achieved.
Activity 2-1-3	Design target farm forests	Number of designed farm forests		A	Achieved.
Activity 2-1-4	Establish farm forests	Number of established farm forests		A	Achieved.
Activity 2-1-5	Monitor the establishment of farm forests	Number of times monitored / reports		A	On going as scheduled.
Activity 2-1-6	Record keeping	Number of records		A	On going as scheduled.
Activity 2-2	Collect and analyze information concerning establishment of farm forest			A	Achieved.
Activity 2-2-1	Review of SFTP (II) extension approaches	Crucial points for tree planting by farmers report		A	Achieved.
Activity 2-2-2	Conduct general conditions survey in target areas	General conditions report of the target areas		A	Achieved.
Activity 2-2-3	Conduct forest resource survey	Forest resource inventory report		B	Achieved.
Activity 2-2-4	Conduct survey for general condition of individual farmers in target areas	Criteria for selecting target farmers/Socio-economic survey report		A	Achieved.
Activity 2-3	Formulate strategic plan for promoting farm forest establishment by local residents			B	More information is needed for effective seeds/seedlings information system.
Activity 2-3-1	Set up guideline for farm forest establishment	Guideline for farm forest establishment		A	Achieved.
Activity 2-3-2	Identify appropriate approach for target farmer selection	SOFEM's approach for farmer selection (Village app, Group app and Individual app)		A	Achieved.
Activity 2-3-3	Select target areas	Number of target areas		A	Achieved.
Activity 2-3-4	Conduct and monitor seeds/seedlings information system	No. of people shared seed/seedling information		C	The system should be more utilized.
Activity 2-3-5	Conduct and monitor cost sharing system	Number of local residents participated		B	On going as scheduled.



## Achievement Chart

("A"= Completely achieved. / "B"= Mostly achieved. / "C"= Partly achieved, but not sufficient/ "D"= Not achieved)

PDM Code	Activities	Target	Personnel	Grade (A/B/C/D)	Comments
Activity 2-4	Establish farm forests			B	Final selection of core farmer by FD side is scheduled this year.
Activity 2-4-1	Train extension agents			B	OJT is on going.
Activity 2-4-1-1	Implement training courses	Number of TAs trained		B	Achieved, but training for forest management, extension method and species improvement are expected.
Activity 2-4-1-2	Implement OJT through establishment of farm forests	Number of TAs trained		B	On going as scheduled.
Activity 2-4-2	Select target farmers	Number of selected target farmers		B	On going as scheduled.
Activity 2-4-3	Train target farmers	Number of target farmers trained		B	On going as scheduled.
Activity 2-4-4	Conduct profile survey on selected targets	Number of target farm profiles		B	On going as scheduled.
Activity 2-4-5	Design target farm forests	Number of designed farm forests		B	On going as scheduled.
Activity 2-4-6	Establish farm forests	Number of established farm forests		B	On going as scheduled.
Activity 2-4-7	Monitor the establishment of farm forests	Number of times monitored / reports		C	Monitoring is not implemented satisfactorily.
Activity 2-4-8	Record keeping	Number of records		B	On going as scheduled.
Activity 2-5	Establish farmer to farmer extension system			B	It is not sure that the all farmers will be trained within project period as the activity is relatively new and the number of trained farmers are less than a half.
Activity 2-5-1	Prepare programme for farmer to farmer extension	Concept paper		A	Achieved.
Activity 2-5-2	Conduct and monitor farmer to farmer extension programme	Number of farmers trained		C	Less than a half of farmers were trained.
Activity 2-6	Improve demonstration plots in Tiva (DEMO II)			A	On going as scheduled.
Activity 2-6-1	Develop and demonstrate practical farm forestry related technologies	Number of technologies demonstrated		A	On going as scheduled.
Activity 2-6-2	Conduct and monitor OJT programme	Number of people trained		A	On going as scheduled.
Activity 2-7	Feedback of technical knowledge of planting and tending into the technology development	Report including identified gaps		B	On going as scheduled.
Activity 2-8	Intermediate evaluation	Intermediate evaluation report		A	Achieved.
Activity 2-9	Review of plan of farm forest establishment	Revised plan		A	Achieved.
Activity 2-10	Final evaluation and compilation of the result of the activities	Final evaluation report		A	Achieved.

## Achievement Chart

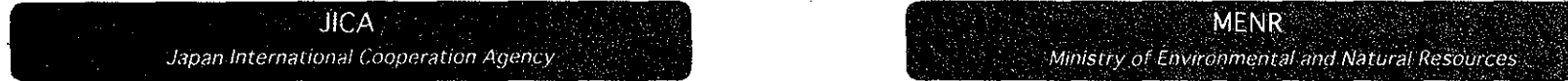
("A"= Completely achieved. / "B"= Mostly achieved. / "C"= Partly achieved, but not sufficient/ "D"= Not achieved)

PDM Code	Activities	Target	Personnel	Grade (A/B/C/D)	Comments
Output 3	Information on social forestry extension is shared with the people and other related organizations			A	Information section's work always comes last and still improvement needed.
Activity 3	Collect, synthesize and disseminate of information on social forestry extension			A	Most activities are implemented as scheduled.
Activity 3-1	Make preparations for information activities			A	Completed.
Activity 3-1-1	Clarify information flow on social forestry extension	Report on information flow		A	Completed.
Activity 3-1-2	Prepare guideline for information activities	Information management guideline		A	Completed, though further utilization needed.
Activity 3-2	Hold regular meetings			A	Meetings are held as scheduled and it contributed smooth implementation.
Activity 3-3	Collect and analyze information from outside sources			B	Improvement is needed.
Activity 3-3-1	Collect publications and make catalogue	Number of publications collected Number of publication catalogued		A	Though PCs are old and cataloguing is running into difficulties, it will recover.
Activity 3-3-2	Exchange information with concerned institutions	Report of information exchanged		B	On going as scheduled, but budgetary constraints affect further activities.
Activity 3-3-3	Collect and analyze successful cases of established farm forests	Number of case studies		B	On going as scheduled, but budgetary constraints affect further activities.
Activity 3-4	Collect information accumulated through project activities			B	This sub-activity has become "B" due to the activity 3-4-2.
Activity 3-4-1	Keep record of project activities	Annual report		A	3 annual reports among 4 have been compiled as scheduled.
Activity 3-4-2	Collect information from farmers or extension agents	Number of information sheets collected		C	Although the achievement was delayed due to a vague target and inadequate human resources, a guideline was proposed to reset the activity.
Activity 3-5	Develop extension materials on establishment of farm forest for extension agents	Number of extension materials developed		A	The outcomes are quite impressive.
Activity 3-6	Disseminate information through publications and events			A	Average.
Activity 3-6-1	Publish project newsletter	Number of newsletters issues		A	Improvement is good including Swahili newsletters.
Activity 3-6-2	Disseminate information through other media	Number of times per media		B	Improvement is expected although information disseminations were done through radio, newspapers, HP, etc.
Activity 3-6-3	Hold seminar on social forestry	Number of seminars held Number of papers presented		A	The activity has been almost completed successfully.
Activity 3-6-4	Implement mobile show	Number of shows Number of attendance		A	The activity was completed and left a great impact to local residents.
Activity 3-6	Develop a social forestry extension model	Report of a social forestry extension model		A	The model was developed as scheduled and its further utilization is expected as an engine for social forest extension.

# ORGANIZATION CHART OF THE PROJECT

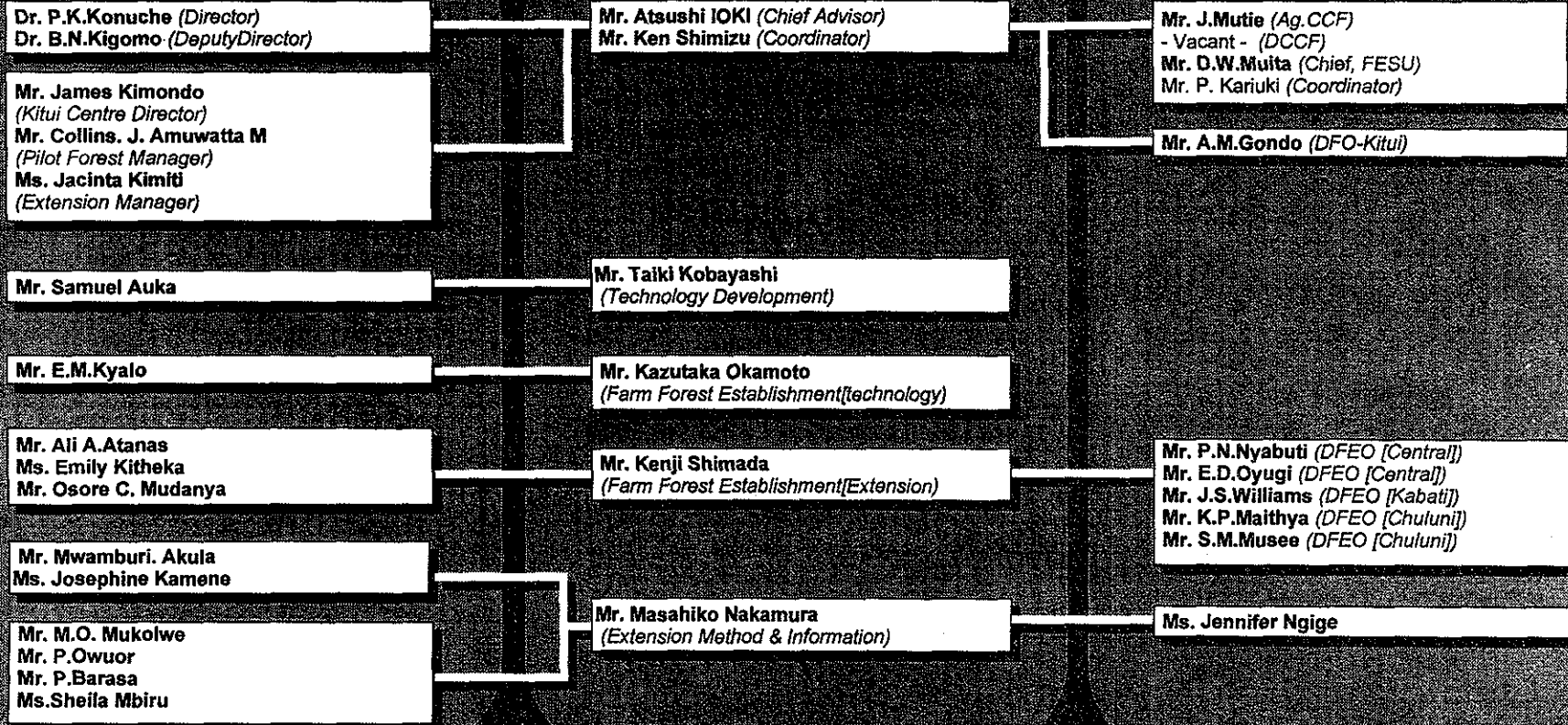
SOFEM (Social Forestry Extension Model Development Project for Semi-arid Areas in Kenya)

2nd April, 2002



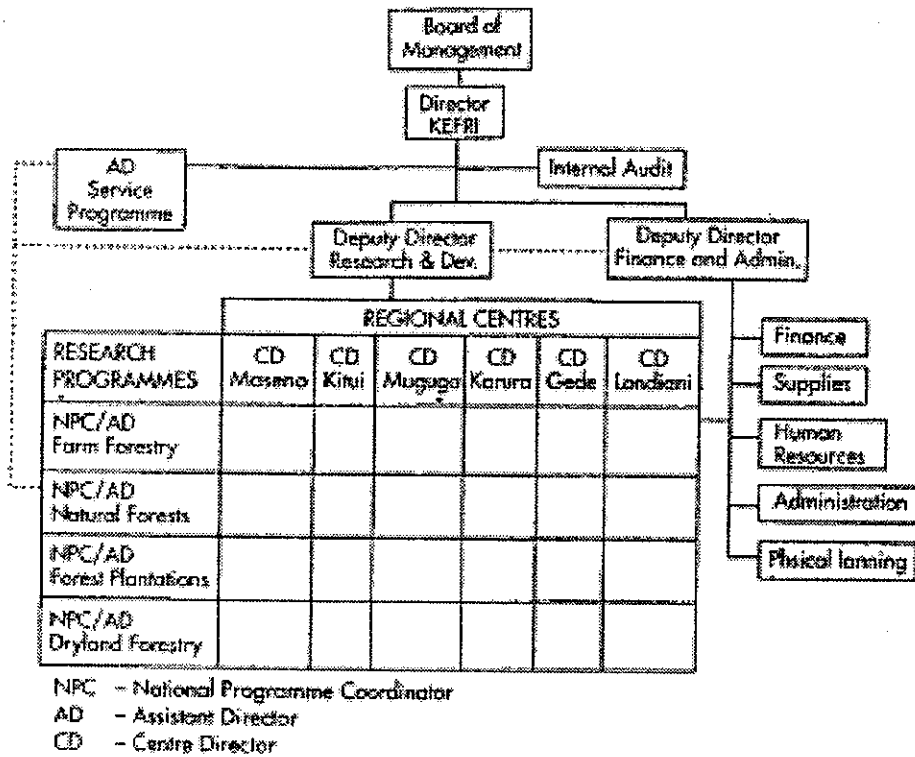
## SOFEM

Kenya Forestry



### KEFRI組織表

KEFRI Organization Structure

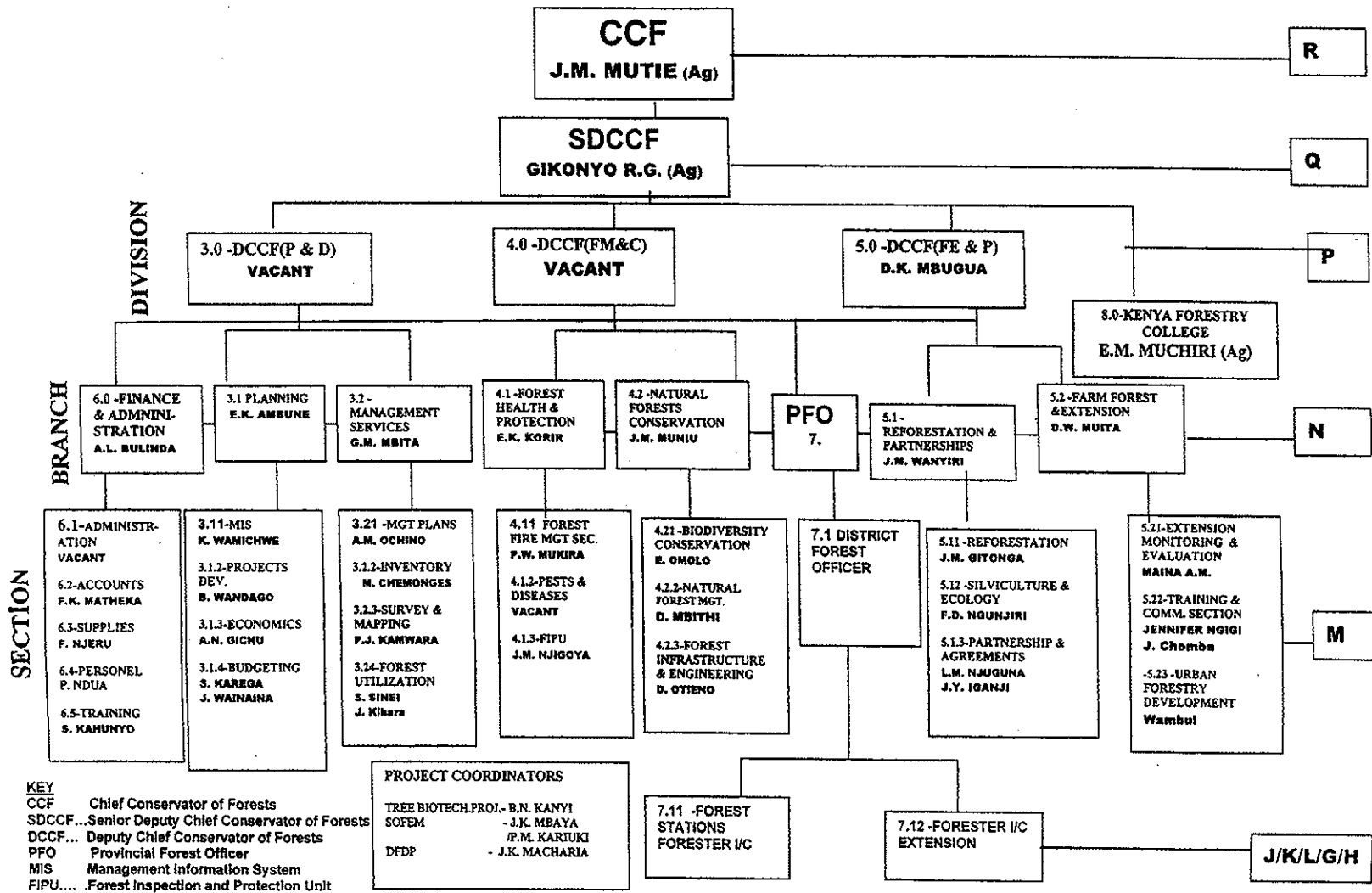


Location of KEFRI's Regional Centres and Sub-Centres



# FOREST DEPARTMENT ORGANIZATION STRUCTURE - JANUARY 2002

JOB GROUP



日本側/相手国側投入実績一覧票

【調整員氏名 清水 研】

平成13年度第3四半期

専門家派遣及び機材供与

細目	年月		1997				1998				1999				2000				2001				2002																										
	11	12	11	12	1	2	3	4	5	6	7	8	9	10	11	12	1	2	3	4	5	6	7	8	9	10	11	12																					
専門家派遣	長期																																																
	1)	三島 征一 (ケニア側)	11/26																									7/25																					
	2)	瀬川 宗生 (ケニア側)																									7/10									7/9													
	3)	五百木 篤 (ケニア側)																																	6/20					11/25									
	4)	齋藤 克郎 (ACA/業務調整)	11/26																									5/25																					
	5)	徳橋 和彦 (業務調整)																									5/16													5/15									
	6)	清水 研 (業務調整)																																	5/6					11/25									
	7)	野田 光弘 (技術開発)	1/7																																					1/6									
	8)	三原 隆義 (技術開発)																																	12/19					12/18									
	9)	小林 大樹 (技術開発)																																					11/25	11/25									
	10)	南 達彦 (農地林造成-技術)	11/26																									7/23																					
	11)	林 視 (農地林造成-技術)																									7/8													7/7									
	12)	岡本 一孝 (農地林造成-技術)																																	6/24					11/25									
	13)	剣持 賢一 (農地林造成-普及)	11/26																									7/23																					
	14)	宮菌 浩樹 (農地林造成-普及)																									7/8													7/7									
	15)	島田 賢司 (農地林造成-普及)																																	6/24					11/25									
	16)	山内 弘美 (普及手法・情報)	11/26																																					4/16									
	17)	赤羽 悦子 (普及手法・情報)																																					3/29	5/21									
18)	仲村 正彦 (普及手法・情報)																																									12/11	12/10						
派遣	短期		なし																									平田泰雅(森林資源調査) 8/3~8/31 矢幡 久(樹木水分収支) 4/11~5/7					高遠 宏(土壌分析) 9/2~11/7 矢幡 久(樹木水分収支) 11/16~12/4 平田泰雅(森林資源調査) 中止					平田泰雅(森林資源調査) 5/7~6/11 矢幡 久(樹木水分収支) 7/28~8/27					高遠宏(土壌分析) 4/20~5/19 矢幡久(樹木水分収支・他) 7/12~9/10 坂井茂雄(林業経営) 10/19~11/30 萩原雄行(農地林造成評価) 2/12~4/25					矢幡久(樹木水分収支・他) 7/1~8/29 萩原雄行(林業経営) 7/30~9/20	
	機材供与		当年度	なし																									○試験機器他 (8,000千円) △車、バイク、コンピュータ (25,000千円)					○試験機器、ソフト他 (4,000千円) △パソコン、発電機、図書 (4,666千円)					○パソコン、実験器具等 (5,083千円) △車両、 (6,286千円)					○車両・重機スベアパーツ (5,713千円)					
機材	機材供与		繰越	なし																									なし					△書籍類 (800千円)					なし					○車両、スベアパーツ 9,348千円					なし
	機材供与		携行機材	○パソコン																									○測量コンパス (2,400千円)					○土壌分析機器 (3,000千円)					○土壌分析機器、パソコン (2,437千円)					○パソコン2台、カメラ他 (4,020千円)					○パソコンソフト、天秤他 (269千円)

研修員受入、現地活動経費、相手国側投入実績、その他

平成13年度第3四半期

年月	1997				1998				1999				2000				2001				2002						
	1	2	3	4	5	6	7	8	9	10	11	12	1	2	3	4	5	6	7	8	9	10	11	12	1	2	3
C/P 日本研修	無し				8/9-8/21 Dr.W.K.Kipkore (林業行政) 8/17-9/26 Mr.G.A.Mwangi (林業管理) 8/17-9/26 Mr.B.O.Odit (林業普及手法) 1/25-2/12 Dr.B.N.Kigomo (林業普及研究)				8/16-10/1 Mr.J.K.Mbaya (林業普及) 8/16-10/1 Mr.P.N.Nyabuti (林業普及) 8/16-10/1 Mr.K.P.Maithya (林業普及)				8/21-10/5 Ms. J.K. Nusyoki (林業研究普及) 8/21-10/5 Mr.J.S. Williams (林業研究) 10/1-2年間 Mr.B. Kigwa (樹木水分収支) 長期研修				8/27-9/29 Mr. S. M. Musee (林業研究普及) 8/27-10/6 Mr.S. Auka (技術開発) 10/1-10/17 Mr. J. Kimondo (林業研究) 10/26-12/14 Mr. O. C. Mudanya (アグロフォレストリー適正技術) 1/7-3年間 Mr.Bernard Muck (樹根菌) 長期研修										
現地活動費	一般現地業務費 1,700千円 造林対策費 6,000千円				一般現地業務費 5,000千円 一般現地業務費 177千円 (臨時) 造林対策費 7,500千円 啓蒙普及活動費 6,000千円 技術交換費 700千円 安全対策費 1,120千円				一般現地業務費 5,500千円 一般現地業務費 964千円 (臨時) 造林対策費 6,024千円 啓蒙普及活動費 6,000千円 特別対策セミナー 2,500千円 安全対策費 244千円				一般現地業務費 4,825千円 一般現地業務費 2,433千円 (臨時) 施設等整備費 7,532千円 現地適応化活動費 6,000千円 安全対策費 1,509千円				一般現地業務費 5,514千円 C/P経費 821千円 一般現地業務費 2,064千円 (臨時) 施設等整備費 9,250千円 現地適応化活動費 12,070千円 特別対策セミナー 1,830千円				一般現地業務費 4,809千円 一般現地業務費 929千円 (臨時) 現地適応化活動費 6,774千円 現地適応化事業費 1,830千円 (臨時) 施設等整備費 8,745千円						
相手国側 投入実績					KEFRI C/P数 12名 KEFRI サポートスタッフ 5名 FD C/P数 7名				KEFRI C/P数 15名 KEFRI サポートスタッフ 5名 FD C/P数 7名				KEFRI C/P数 16名 KEFRI サポートスタッフ 6名 FD C/P数 11名				KEFRI C/P数 16名 KEFRI サポートスタッフ 6名 FD C/P数 11名										
調査団	8/18-28 (事前、4名)				5/6-17 (運営指導、2名)				11/28-12/2 (運営指導、2名)				4/8-4/22 (運営指導、5名)				未定 (終了時評価)										
リター会議	2/2-10 (三島、東京)				2/1-12 (三島、東京)								1/27-2/2 (瀬川、東京)				-				-						
調整員会議	無し				10/19-23 (徳橋、ロンドン)				無し				10/25-29 (清水、パリ)				-				-						
国内委員会									2/4 (瀬川、JICA本部)				9/22 (瀬川、JICA本部)				12/18 (五百木、JICA本部)										

無償資金協力概要

- |                         |                           |
|-------------------------|---------------------------|
| 1. (1) 内容：ケニア育苗訓練センター計画 | 2. (1) 内容：ケニア育苗訓練センター拡充計画 |
| (2) E/N時期：1985年         | (2) E/N時期：1994年           |
| (3) 金額：14億円             | (3) 金額：16.5億円             |
| (4) 完了時期：1986年          | (4) 完了時期：1995年            |

機材の利用、管理状況表

(10万円以上の機材)

供与年度	予算科目	購入方法	部門	機材名 (和名・英名)		メーカー名	モデル/形式	シリアル/エンジン番号	価格		納入業者	設置場所	利用状況	管理状況	備考 (特記事項)	
									Ksh	JPY						
98/99(H10)	機材供与	現地調達	KEFRI/HQD	ファックス	Facsimile	MITA	MITA TC 650	Machine NO. KK47049882, Code No. LK47002137, Code number. 199501	70,000.00		MITCOFAX	KEFRI/HQD	週1~3 several times a week	良 & working	good	
98/99(H10)	機材供与	現地調達	KEFRI/Kitui	ファックス	Facsimile	MITA	Mita TC-680	Machine number. LK47002137, Code number. 199501	70,000.00		MITCOFAX	KEFRI/Kitui	毎日 daily	可 working		Laser Writer = dry paper
97/98(H9)	携行機材	現地調達	KEFRI/Kitui	電源バックアップ装置	UPS	MGE UPS Systems	Pulsar ELT	ART:5103259000/SN:573728761/NT=A1			Computer Technics LTD	KEFRI/Kitui	毎日 daily	良 & working	good	
97/98 (H19)	機材供与	現地調達	KEFRI/Kitui	デスクトップパソコン	Desk Top Personal Computer	Apple						KEFRI/Kitui	使用せず not in use	不可/要整備 of parts	out	修理中
97/98 (H9)	携行機材	本邦調達	KEFRI/Kitui	外付けモデム	Modem	Hayes	Hayes Accwia Fax Modem 336					KEFRI/Kitui	週1~3 several times a week	可 working		修理中
98/99 (H10)	機材供与	本邦調達	KEFRI/Kitui	トランシーバー	Transceiver	松下電器	NO RJ-310/0.5W	BA7030876				KEFRI/Kitui	年3~11 not in common use	可 working		
98/99(H10)		本邦調達	KEFRI/Kitui	プリンター	Printer	Apple	Color StyleWriter 2500	VN646S9H65Q				KEFRI/Kitui	毎日 daily	良 & working	good	事務室内
99/00(H11)	機材供与	現地調達	KEFRI/Kitui	コンピュータ	Desktop Computer	Dell	Optiplex Gx 1MT	QJN1X	2,428.00		Kenya Micro	KEFRI/Kitui	毎日 daily	良 & working	good	Pilot forest Office.
99/00(H11)	機材供与	現地調達	KEFRI/Kitui	インクジェット カラープリンター	Ink Jet Color Printer	Epson	Stylus Color 600	A6H7435211	568		Kenya Micro	KEFRI/Kitui	毎日 daily	良 & working	good	Pilot Forest Office
97/98(H9)	携行機材	本邦調達	KEFRI/Kitui	パワーブック パーソナルコンピュータ	Power Book Personal Computer	Apple Japan, inc.	P B 1400cs/133	QJ7310UPAZA	99,000.00	¥226,800		KEFRI/Kitui	毎日 daily	良 & working	good	
97/98 (H9)	現地業務費等	現地調達	KEFRI/Kitui	プリンター	Printer	Apple Computer, Inc.	Color StyleWriter 2500	VN646S9G65Q				KEFRI/Kitui	使用せず not in use	不可/要整備 of parts	out	
98/99 (H10)	現地業務費等	現地調達	KEFRI/Kitui	バッテリー	Battery	MGE UPS SYSTEMS	Pulsar ES 5+	S71708J07 NT:A1	31,140.00	¥62,280		KEFRI/Kitui	毎日 daily	良 & working	good	パソコン用
98/99 (H10)	機材供与	本邦調達	KEFRI/Kitui	水ポテンシャル測定装置	Water Potential Measurement System	DECAGON DEVICES INC.	SC10X		700,000.00	¥1,476,760		KEFRI/Kitui	特定時期 special season only	良 & working	good	
98/99 (H10)	機材供与	本邦調達	KEFRI/Kitui	転倒すす雨量センサー	Rainfall sensor stumble measure	TEXAS ELECTRONICS INC.	TR-525M	21292-4-598, 20906-398	130,000.00	¥278,400		KEFRI/Kitui	毎日 daily	良 & working	good	
98/99 (H10)	機材供与	本邦調達	KEFRI/Kitui	風向風速センサー	Direction wind and Wind velocity Sensor	R.M. YOUNG COMPANY(U.S.A)	03001-5, 03301-5	P/N9720, P/N9661	5,000.00	¥10,400		KEFRI/Kitui	毎日 daily	良 & working	good	
98/99 (H10)	機材供与	本邦調達	KEFRI/Kitui	スレーブポロメーター (針葉樹測定キット)	Steady State Porometer	LI-COR INC.	LI-1600	SSP1726	800,000.00	¥1,860,310		KEFRI/Kitui	特定時期 special season only	良 & working	good	
98/99 (H10)	機材供与	現地調達	KEFRI/Kitui	ヒートパルス測定プローブ	Heat Pulsu Prove	ICRAF	3m		12,000.00	¥28,560		KEFRI/Kitui	特定時期 special season only	良 & working	good	
98/99 (H10)	機材供与	本邦調達	KEFRI/Kitui	データロガー	Data Logger	CAMPBELL SCIENTIFIC INC.	CR10X	X15574	160,000.00	¥335,820		KEFRI/Kitui	毎日 daily	良 & working	good	
98/99 (H10)	機材供与	本邦調達	KEFRI/Kitui	データロガー	Data Logger	CAMPBELL SCIENTIFIC INC.	CR10X	X15578	160,000.00	¥335,820		KEFRI/Kitui	毎日 daily	良 & working	good	
98/99 (H10)	機材供与	本邦調達	KEFRI/Kitui	データロガー	Data Logger	CAMPBELL SCIENTIFIC INC.	CR10X	X15571	160,000.00	¥335,820		KEFRI/Kitui	毎日 daily	良 & working	good	
98/99 (H10)	機材供与	本邦調達	KEFRI/Kitui	データロガー	Data Logger	CAMPBELL SCIENTIFIC INC.	CR10X	X15575	160,000.00	¥335,820		KEFRI/Kitui	毎日 daily	良 & working	good	
98/99 (H10)	機材供与	本邦調達	KEFRI/Kitui	モイスチャーポイントプローブ	Moisture Point Prove				460,000.00	¥970,000		KEFRI/Kitui	毎日 daily	良 & working	good	
98/99 (H10)	機材供与	本邦調達	KEFRI/Kitui	土壌水分センサー	Soil Moisture Sensor	CAMPBELL SCIENTIFIC INC.	CS615-L35		470,000.00	¥992,000		KEFRI/Kitui	毎日 daily	良 & working	good	
98/99 (H10)	携行機材	本邦調達	KEFRI/Kitui	小型無停電電源装置	Power supply equipment No. blackout	ユタカ電機製作所	UPS-mini500	971280448	36,000.00	¥72,963		KEFRI/Kitui	毎日 daily	良 & working	good	パソコン用
99/00(H11)	携行機材	現地調達	KEFRI/Kitui	表面流測定器	Tipping Bucket	CBR ENGINEERING WORKS			68,000.00	¥110,000		KEFRI/Kitui	毎日 daily	良 & working	good	新除雪機試験に設定
98/99(H10)	機材供与	現地調達	KEFRI/Kitui	パーソナルコンピュータ	Personal Computer	DAEWOO	CT630 - 431X	8091A77995・WH#YC01142	66,000.00	¥150,000		KEFRI/Kitui	毎日 daily	良 & working	good	技術開発
98/99(H10)	機材供与	現地調達	KEFRI/Kitui	バッテリー	Battery (Back -- UPS)	APC	BK650M1	IN89814042644	18,500.00	¥43,000		KEFRI/Kitui	毎日 daily	良 & working	good	技術開発
98/99 (H10)	機材供与	現地調達	KEFRI/Kitui	プリンター	Printer	Canon	BJC-4550	CAV07303	30,000.00	¥69,000		KEFRI/Kitui	毎日 daily	良 & working	good	技術開発
98/99(H10)	携行機材	本邦調達	KEFRI/Kitui	変圧器	TRANSFORMER	MATSUNAGA	SVC-600ND	8803044		¥27,500	JCS	KEFRI/Kitui	毎日 daily	良 & working	good	
98/99(H10)	携行機材	本邦調達	KEFRI/Kitui	変圧器	TRANSFORMER	MATSUNAGA	SVC-600ND	8803031		¥27,500	JCS	KEFRI/Kitui	毎日 daily	良 & working	good	



機材の利用、管理状況表

(10万円以上の器材)

供年年度	予算科目	購入方法	部門	機材名(和名・英名)		メーカー名	モデル/形式	シリアル/エンジン番号	価格		納入業者	設置場所	利用状況	管理状況	備考(特記事項)	
									Ksh	JPY						
98/99(H10)	携行機材	本邦輸送	KEFRU/Kitui	レベルトラコン	COMPASS	牛方	LS-25 271-3201	182423		¥67,500	JCS	KEFRU/Kitui	年3~11 not in common use	良 & working	good	
98/99(H10)	携行機材	本邦輸送	KEFRU/Kitui	レベルトラコン	COMPASS	牛方	LS-25 271-3201	182424		¥67,500	JCS	KEFRU/Kitui	年3~11 not in common use	良 & working	good	
98/99(H10)	携行機材	本邦輸送	KEFRU/Kitui	レベルトラコン	COMPASS	牛方	LS-25 271-3201	182453		¥67,500	JCS	KEFRU/Kitui	年3~11 not in common use	良 & working	good	
98/99(H10)	機材供与	現地調達	KEFRU/Kitui	モーターバイク	Motorbike	YAMAHA	DT125	3TT-092972	138,720.00	¥319,056	YAMAHA MOTORS	KEFRU/Kitui	週1~3 several times a week	良 & working	good	
98/99(H10)	機材供与	現地調達	KEFRU/Kitui	モーターバイク	Motorbike	YAMAHA	DT125	3TT-092962	138,720.00	¥319,056	YAMAHA MOTORS	KEFRU/Kitui	毎日 daily	良 & working	good	
98/99 (H10)	機材供与	現地調達	KEFRU/Kitui	パソコン	PERSONAL COMPUTER	DAEWOO	PENTIUM II 333/64/4.3GB	8091A77772(HARD), WH8YCD1152(DISPLAY)	66,000.00		TECHNOLOGY TODAY	KEFRU/Kitui	毎日 daily	良 & working	good	
98/99 (H10)	機材供与	現地調達	KEFRU/Kitui	電源バックアップ	UPS	APC	650 UPS	NB9810036487	18,500.00		TECHNOLOGY TODAY	KEFRU/Kitui	毎日 daily	良 & working	good	
98/99 (H10)	機材供与	現地調達	KEFRU/Kitui	プリンター	PRINTER	CANON	BJC 4550	CAY19256	30,000.00		TECHNOLOGY TODAY	KEFRU/Kitui	毎日 daily	良 & working	good	
98/99 (H10)	機材供与	現地調達	KEFRU/Kitui	スキャナー	SCANNER	HP	SCANJET 6200C	SG92P110Y4	63,000.00		TECHNOLOGY TODAY	KEFRU/Kitui	週1~3 several times a week	良 & working	good	
98/99 (H10)	機材供与	現地調達	KEFRU/Kitui	コピー機	PHOTO COPIER	MITA	DC 2060	SR37-009582H	273,000.00	¥627,900	MITCOFAX	KEFRU/Kitui	毎日 daily	良 & working	good	
98/99 (H10)	機材供与	現地調達	KEFRU/Kitui	ファックス	FACSIMILE MACHINE	CANON	8150 BUBBLE JET	112896	35,000.00	¥80,500	MITCOFAX	KEFRU/Kitui	週1~3 several times a week	良 & working	good	
98/99 (H10)	機材供与	現地調達	KEFRU/HDQ	パソコン	PERSONAL COMPUTER	DELL	OPTIPLX GX1	QN1LT(HARD), 22795C2047, 49(DISPLAY), CHU 0058765(SPEAKER)	146,894.00	¥293,788	KENYA MICRO	KEFRU/HDQ	毎日 daily	良 & working	good	スピーカー付属
98/99 (H10)	機材供与	現地調達	KEFRU/HDQ	電源バックアップ	UPS	APC	650 UPS	NB 9814043247	18,500.00		TECHNOLOGY TODAY	KEFRU/HDQ	毎日 daily	良 & working	good	
98/99 (H10)	機材供与	現地調達	KEFRU/HDQ	スキャナー	SCANNER	HP	SCANJET 6200C	SG92P110XP	63,000.00		TECHNOLOGY TODAY	KEFRU/HDQ	週1~3 several times a week	良 & working	good	
98/99(H10)	機材供与	現地調達	KEFRU/HDQ	プリンター	PRINTER	EPSON	STYLUS COLOR 640 P954A	AGH7435241	34,364.00	¥68,728	KENYAMICRO	KEFRU/HDQ	毎日 daily	良 & working	good	
98/99 (H10)	機材供与	現地調達	FD/Kitui	イズズ フロンティア	ISUZU Frontier	ISUZU	STATION WAGON MODEL UCS 280 DT LX	CHASSIS 857135, ENGINE 529738	1,222,200.00	¥2,444,400	GENERAL MOTORS KENYA LTD	FD/Kitui	週1~3 several times a week	良 & working	good	
98/99 (H10)	機材供与	現地調達	FD/Kitui	イズズ ダブルキャブ	ISUZU D/CAB PICK-UP	ISUZU	TF554	CHASSIS 7103025, ENGINE 551621	1,188,000.00	¥2,376,000	GENERAL MOTORS KENYA LTD	FD/Kitui	毎日 daily	良 & working	good	
98/99 (H10)	機材供与	現地調達	FD/Kitui	モーターバイク	Motorbike	YAMAHA	DT125	3TT-092984	138,720.00	¥319,056	YAMAHA MOTORS	FD/Kitui	毎日 daily	良 & working	good	
98/99 (H10)	機材供与	現地調達	FD/Kitui	モーターバイク	Motorbike	YAMAHA	DT125	3TT-092958	138,720.00	¥319,056	YAMAHA MOTORS	FD/Kitui	毎日 daily	良 & working	good	
98/99 (H10)	機材供与	現地調達	FD/Kitui	モーターバイク	Motorbike	YAMAHA	DT125	3TT-092985	138,720.00	¥319,056	YAMAHA MOTORS	FD/Kitui	毎日 daily	良 & working	good	
98/99 (H10)	機材供与	現地調達	FD/Kitui	モーターバイク	Motorbike	YAMAHA	DT 125	3TT-092969	138,720.00	¥319,056	YAMAHA MOTORS	FD/Kitui	毎日 daily	良 & working	good	
98/99 (H10)	機材供与	現地調達	FD/Kitui	モーターバイク	Motorbike	YAMAHA	DT125	3TT-092971	138,720.00	¥319,056	YAMAHA MOTORS	FD/Kitui	週1~3 several times a week	良 & working	good	
98/99 (H10)	機材供与	現地調達	FD/Kitui	モーターバイク	Motorbike	YAMAHA	DT125	3TT-092992	138,720.00	¥319,056	YAMAHA MOTORS	FD/Kitui	毎日 daily	良 & working	good	
98/99 (H10)	機材供与	現地調達	FD/Kitui	モーターバイク	Motorbike	YAMAHA	DT125	3TT-092980	138,720.00	¥319,056	YAMAHA MOTORS	FD/Kitui	毎日 daily	良 & working	good	
98/99 (H10)	機材供与	現地調達	FD/Kitui	モーターバイク	Motorbike	YAMAHA	DT125	3TT-092975	138,720.00	¥319,056	YAMAHA MOTORS	FD/Kitui	毎日 daily	良 & working	good	
98/99 (H10)	機材供与	現地調達	FD/Kitui	モーターバイク	Motorbike	YAMAHA	DT125	3TT-092978	138,720.00	¥319,056	YAMAHA MOTORS	FD/Kitui	毎日 daily	良 & working	good	
98/99 (H10)	機材供与	現地調達	FD/Kitui	モーターバイク	Motorbike	YAMAHA	DT125	3TT-092986	138,720.00	¥319,056	YAMAHA MOTORS	FD/Kitui	毎日 daily	良 & working	good	
98/99 (H10)	機材供与	現地調達	FD/Kitui	パソコン	PERSONAL COMPUTER	DAEWOO	PENTIUM II 333/64/4.3GB	8091A77838(HARD), WH93CO0224(DISPLAY)	66,000.00	¥132,000	TECHNOLOGY TODAY	KEFRU/Kitui	毎日 daily	良 & working	good	
98/99 (H10)	機材供与	現地調達	FD/Kitui	電源バックアップ	UPS	APC	650 UPS	NB 9814042604	18,500.00	¥37,000	TECHNOLOGY TODAY	KEFRU/Kitui	毎日 daily	良 & working	good	

機材の利用、管理状況表

(10万円以上の機材)

供与年度	予算科目	購入方法	部門	機材名(和名・英名)		メーカー名	モデル/形式	シリアル/エンジン番号	価格		納入業者	設置場所	利用状況	管理状況	備考(特記事項)	
									Ksh	JPY						
98/99 (H10)	機材供与	現地調達	FD/Kitui	プリンター	PRINTER	CANON	BJC 4550	CAY07269	30,000.00	¥60,000	TECHNOLOGY TODAY	KEFRI/Kitui	毎日 daily	良 & working	good	
98/99 (H10)	機材供与	現地調達	FD/Kitui	コピー機	PHOTO COPIER	MITA	OC 2060	SR37-009565H	273,000.00	¥627,900	MITCOFAX	KEFRI/Kitui	毎日 daily	良 & working	good	
98/99 (H10)	機材供与	現地調達	FD/Kitui	ファックス	FACSIMILE MACHINE	CANON	B150 BUBBLE JET	125658	35,000.00	¥80,500	MITCOFAX	KEFRI/Kitui	毎日 daily	良 & working	good	
98/99 (H10)	機材供与	現地調達	FD/Kitui	ファックス	FACSIMILE MACHINE	CANON	B150 BUBBLE JET	127307	35,000.00	¥80,500	MITCOFAX	KEFRI/Kitui	毎日 daily	良 & working	good	
98/99(H10)	機材供与	現地調達	FD/HDQ	イズス フロンティア	ISUZU Frontier	ISUZU	STATION WAGON MODEL UCS 280 DT LX	CHASIS 857840, ENGINE 542855	1,222,200.00	¥2,444,400	GENERAL MOTORS KENYA LTD	FD/HDQ	週1-3 several times a week	良 & working	good	
98/99 (H10)	機材供与	現地調達	FD/HDQ	パソコン	PERSONAL COMPUTER	DAEWOO	PENTILM II 333/64/4.3GB	8091A77998(HARD), WHBYCO1209(DISPLAY)	66,000.00	¥132,000	TECHNOLOGY TODAY	FD/HDQ	毎日 daily	良 & working	good	
98/99 (H10)	機材供与	現地調達	FD/HDQ	電源バックアップ	UPS	APC	650 MI	NB 9814042355	18,500.00	¥37,000	TECHNOLOGY TODAY	FD/HDQ	毎日 daily	良 & working	good	
98/99 (H10)	機材供与	現地調達	FD/HDQ	プリンター	PRINTER	CANON	BJC 4550	CAY19220	30,000.00	¥60,000	TECHNOLOGY TODAY	FD/HDQ	毎日 daily	良 & working	good	
99/00(H11)	機材供与	現地調達	KEFRI/Kitui	パソコン	PERSONAL COMPUTER	TOSHIBA	4070 CDS LAPTOP	69155858E	172,843.00	¥251,450	TECHNOLOGY TODAY	KEFRI/Kitui	毎日 daily	良 & working	good	KEFRI/Kitui事務所 保管であるが、専門家が使用
99/00(H11)	機材供与	現地調達	KEFRI/Kitui	プリンター	PRINTER	CANON	BCJ-4550	CAY07294	24,124.00	¥35,096	TECHNOLOGY TODAY	KEFRI/Kitui	週1-3 several times a week	良 & working	good	KEFRI/Kitui事務所において専門家が使用
99/00(H11)	機材供与	現地調達	FD/Kitui	パソコン	PERSONAL COMPUTER	TOSHIBA	4070 CDS LAPTOP	69155868E	172,843.00	¥251,450	TECHNOLOGY TODAY	KEFRI/Kitui	毎日 daily	良 & working	good	
99/00(H11)	機材供与	現地調達	FD/HDQ	会議用イス	Visitors Chair		Berkley visitors chairs in amlon-brown		36,400.00	¥58,240	ODDS&ENDS LTD	FD/HDQ	特定時期 special season only	良 & working	good	
99/00(H11)	機材供与	現地調達	FD/HDQ	キャビネット	Cabinet		drawer metal filing cabinets		40,000.00	¥64,000	ODDS&ENDS LTD	FD/HDQ	毎日 daily	良 & working	good	
99/00(H11)	機材供与	現地調達	FD/HDQ	キャビネット	cabinet		Full size metal stationery cabinet		20,000.00	¥32,000	ODDS&ENDS LTD	FD/HDQ	毎日 daily	良 & working	good	
99/00(H11)	機材供与	現地調達	FD/HDQ	執務用椅子	executive chair		Sun High back executive chair-black or grey		13,000.00	¥20,800	ODDS&ENDS LTD	FD/HDQ	毎日 daily	良 & working	good	
99/00(H11)	機材供与	現地調達	FD/HDQ	本棚	Book Shelf		book shelf WB41		62,500.00		VICTORIA FURNITURES LTD.	FD/HDQ	毎日 daily	良 & working	good	
99/00(H11)	機材供与	現地調達	FD/HDQ	ソファセット	sofa set		office sofa set kibo		60,000.00		VICTORIA FURNITURES LTD.	FD/HDQ	毎日 daily	良 & working	good	
98/99(H10)	機材供与	現地調達	KEFRI/HDQ	コピー機	Photo Copy Machine	MITA	MITA DC 1856	LL37 012024	154,000.00		MITCOFAX	KEFRI/HDQ	毎日 daily	良 & working	good	
98/99 (H10)	現地業務費等	現地調達	KEFRI/HDQ	インバーター	Invertor				53,100.00		CHINTU	KEFRI/HDQ	毎日 daily	良 & working	good	
98/99 (H10)	現地業務費等	現地調達	KEFRI/HDQ	トランス	Transformer				4,720.00		CHINTU	FD/HDQ	毎日 daily	良 & working	good	
98/99 (H10)	機材供与	現地調達	FD/Kitui	イズス ダブルキャブ	ISUZU D/CAB PICK-UP	ISUZU	TF554	CHASSIS 7103025, ENGINE 551621	1,188,000.00	¥2,376,000	GENERAL MOTORS KENYA LTD	FD/Kitui	毎日 daily	良 & working	good	
00/01(H12)	携行機材	現地調達	Common	Zipドライブ	Zip Drive	iomega	Z250USBPM	04160D01			PERSONAL SYSTEMS	Common	毎日 daily	良 & working	good	USD250
00/01(H12)	機材供与	本邦調達	KEFRI/Kitui	プレッシャー・チャンバー	Plant Moisture Tension Measuring Instrument	DAIKIRIKA KOGYO	DK-7001			¥567,000			特定時期 special season only	良 & working	good	
00/01(H12)	機材供与	本邦調達	KEFRI/Kitui	携行ボンベ	Oxygen Cylinder		TP335-PP200			¥111,500			特定時期 special season only	良 & working	good	
00/01(H12)	機材供与	本邦調達	KEFRI/Kitui	携行ボンベ	Oxygen Cylinder		TP335-PP200			¥111,500			特定時期 special season only	良 & working	good	
00/01(H12)	携行機材	本邦調達	FD/Kitui	パソコン	Computer	SONY	PGG-SR9K			¥311,000		KEFRI/Kitui	毎日 daily	良 & working	good	WITH CD DRIVE etc.
99/00(H11)	携行機材	本邦調達	KEFRI/Kitui	ヒートパルス電子スタンド	Stand for Heart Pulse Terminal					¥146,000		KEFRI/Kitui	毎日 daily	良 & working	good	
00/01(H12)	機材供与	現地調達	KEFRI/Kitui	蒸発計	Hook Gauge Evaporimeter				120,000.00		Sciencescope	KEFRI/Kitui	特定時期 special season only	良 & working	good	1 set
00/01(H12)	機材供与	現地調達	KEFRI/Kitui	光量計	Solarimeter				111,950.00		Sciencescope	KEFRI/Kitui	特定時期 special season only	良 & working	good	

機材の利用、管理状況表

(10万円以上の機材)

供与年度	予算科目	購入方法	部門	機材名(和名・英名)		メーカー名	モデル/形式	シリアル/エンジン番号	価格		納入業者	設置場所	利用状況	管理状況	備考(特記事項)	
									Ksh	JPY						
00/01(H12)	機材供与	現地調達	KEFRU/Kitui	パソコン	Computer	Toshiba	Satellite 167Scds		155,000.00		Technology Today	KEFRU/Kitui	毎日 daily	良 & working	good	
00/01(H12)	機材供与	現地調達	KEFRU/Kitui	パソコン	Computer	Toshiba	Satellite 167Scds		155,000.00		Technology Today	KEFRU/Kitui	毎日 daily	良 & working	good	
00/01(H12)	機材供与	現地調達	KEFRU/Kitui	パソコン	Computer	HP	HP P III 733		190,380.00		Technology Today	KEFRU/Kitui	毎日 daily	良 & working	good	SCSI board
00/01(H12)	機材供与	現地調達	KEFRU/Kitui	プリンター	Printer	HP	HP Jet 4050n		145,500.00		Technology Today	KEFRU/Kitui	毎日 daily	良 & working	good	
00/01(H12)	機材供与	現地調達	KEFRU/Kitui	プリンター	Printer	HP	HP Jet 4050n		145,500.00		Technology Today	KEFRU/Kitui	毎日 daily	良 & working	good	
00/01(H12)	機材供与	現地調達	KEFRU/Kitui	デジタル・ビデオ・カメラ	Digital Video Camera	SONY	DCR-PC100E		170,000.00		Audio Point Ltd	KEFRU/HDQ	週1~3 several times a week	良 & working	good	Microphone, extra battery
01/02(H13)	機材供与	現地調達	KEFRU/HDQ	ランドクルーザー・プラド	Toyota Landcruiser prado	Toyota	LJ95(Spec B)	白	28,570.00		Toyota Kenya	KEFRU/HDQ	毎日 daily	良 & working	good	12年度繰越
01/02(H13)	機材供与	現地調達	KEFRU/HDQ	ランドクルーザー・プラド	Toyota Landcruiser prado	Toyota	LJ95(Spec B)	緑	28,570.00		Toyota Kenya	KEFRU/HDQ	毎日 daily	良 & working	good	12年度繰越
01/02(H13)	機材供与	現地調達	KEFRU/HDQ	サーバー	Server Computer	Compaq	Proliant ML350	3892Q007	336,000.00		Technology Today	KEFRU/HDQ	毎日 daily	良 & working	good	ホームページ用
00/01(H12)	機材供与	現地調達	KEFRU/HDQ	パソコン	Computer	Compaq	Deskpro	8030FQ40521	174,400.00		Technology Today	KEFRU/HDQ	毎日 daily	良 & working	good	SCSI HD ビデオ用
01/02(H13)	機材供与	現地調達	KEFRU/HDQ	パソコン	Compter	Toshiba	Satellite 1715xds		135,680.00		Technology Today	KEFRU/HDQ	毎日 daily	良 & working	good	
01/02(H13)	機材供与	現地調達	KEFRU/HDQ	パソコン	Compter	Toshiba	Satellite 1715xds		135,680.00		Technology Today	KEFRU/HDQ	毎日 daily	良 & working	good	
01/02(H13)	機材供与	現地調達	KEFRU/HDQ	プリンター	Printer	HP	HP Jet 4100	JPPFD08152	122,880.00		Technology Today	KEFRU/HDQ	毎日 daily	良 & working	good	ホームページ用
01/02(H13)	機材供与	現地調達	KEFRU/Kitui	コピー機	Copy Machine	Canon	GP 405		525,600.00		MFI	KEFRU/Kitui	毎日 daily	良 & working	good	デジタル 両面
01/02(H13)	機材供与	現地調達	KEFRU/HDQ	コピー機	Copy Machine	Canon	GP 305		460,800.00		MFI	KEFRU/HDQ	毎日 daily	良 & working	good	デジタル 両面
01/02(H13)	機材供与	現地調達	KEFRU/HDQ	ハイラックス	Toyota Hilux Diesel	Toyota	LN166R-TRMDS		20,084.00		Toyota Kenya	KEFRU/HDQ	毎日 daily	良 & working	good	2779cc
00/01(H12)	携行機材	現地調達	KEFRU/HDQ	パソコン	Computer	Apple	G3/500		3,900.00		Personal Systems	KEFRU/HDQ	毎日 daily	不可 of order	out	2002.1故障 修理付加
00/01(H12)	携行機材	現地調達	KEFRU/Kitui	プリンター	Printer	GCC	Elite 12/600 LP		1,116.00		Personal Systems	KEFRU/Kitui	毎日 daily	良 & working	good	
01/02(H13)	携行機材	現地調達	KEFRU/HDQ	パソコン	Computer	Apple	PB G4/667		3,600.00		Personal Systems	KEFRU/HDQ	毎日 daily	良 & working	good	
01/02(H13)	携行機材	本邦輸送	KEFRU/Kitui	パソコン	Computer	SONY	PCG-GR9K			¥39,500		KEFRU/Kitui	毎日 daily	良 & working	good	小林専門家
01/02(H13)	携行機材	本邦輸送	KEFRU/Kitui	デジタル・ビデオ・カメラ	Digital Video Camera	SONY	DCR-PC120			¥202,000		KEFRU/Kitui	毎日 daily	良 & working	good	小林専門家
01/02(H13)	携行機材	現地調達	KEFRU/Kitui	パソコン	Computer	Toshiba	1805 S274	19018218	187,500.00		Sciencescope Ltd	KEFRU/Kitui	毎日 daily	良 & working	good	仲村専門家
01/02(H13)	携行機材	現地調達	KEFRU/Kitui	デジタル・カメラ	Digital Camera	Olympus	C2040 zoom	164321665	65,000.00		Sciencescope Ltd	KEFRU/Kitui	毎日 daily	良 & working	good	仲村専門家
01/02(H13)	携行機材	現地調達	KEFRU/Kitui	パソコン	Computer	IBM	T23		232,500.00		Sciencescope Ltd	KEFRU/Kitui	毎日 daily	良 & working	good	島田専門家
01/02(H13)	携行機材	現地調達	KEFRU/HDQ	パソコン	Computer	Toshiba	Aatelite 1800		179,000.00		Sciencescope Ltd	KEFRU/HDQ	毎日 daily	良 & working	good	五百木専門家
01/02(H13)	携行機材	現地調達	KEFRU/HDQ	カラー・レーザー・プリンター	Color Laser Printer	HP	HP L4550	JPPFD08152	288,000.00		Sciencescope Ltd	KEFRU/HDQ	毎日 daily	良 & working	good	五百木専門家
98/99(H10)	機材供与	現地調達	FD/Kitui	コピー機	Copy machine	Mita	DC2060		209,000.00		MFI	FD/HDQ	毎日 daily	良 & working	good	
98/99(H10)	機材供与	現地調達	FD/HDQ	コピー機	Copy machine	Mita	DC2060		209,000.00		MFI	FD/Kitui	毎日 daily	良 & working	good	

### Workshop result for Information Activities Evaluation in SOFEM Project

A workshop to evaluate the information activities of the SOFEM Project by officers concerned among KEFRI and FD was held on 26 March 2002 at the conference room in KEFRI Kitui Center from 10:00am to 5:00pm. These are the result of discussion during the workshop.

Attendants: FD Mr. P. Kariuki  
 KEFRI HQ Mr. P.Owuor, Mr. P.Barasa, Ms. S.Mbiru  
 KEFRI Kitui Ms.J.Kimiti (Chairperson), Mr. M.Akula, Ms. J.Kamene  
 SOFEM/JICA Mr. M.Nakamura  
 F.E.Mission Mr. T.Kuwahara

#### 1. Accomplishment

Activity	Input Assessment	Activity Assessment
3.1.1 Clarify info. flow	- Communication equipment was lacking at the initial stage of the Project, but was improved. - Preventive maintenance resources are still lacking, such as computer virus prevention.	- 100 % was accomplished as scheduled.
3.1.2 Prepare guideline	- Sensitization needed on the use of the guidelines	- Guidelines prepared - More copies should be published and circulated. - The guideline is not fully utilized.
3.2 Regular meeting	- Helped to monitor the progress of project activities - Meetings still continuing.	- Most of meetings were held as scheduled - All stakeholders participate well. - They were useful for internal information sharing, consensus decision making, and monitoring.
3.3.1 Publication & catalogue	- Librarians are not trained well. - Equipment is needed like computers and their attachments.	- Initial plan was overambitious but after indicators were adjusted progress was made.
3.3.2 Exch. info.	- Financial constraints	- 3 visits made and reports prepared.
3.3.3 Successful case	- Financial constraints	- 3 case studies analyzed and reports compiled
3.4.1 Keep record	- Poor computer working condition - Delayed submission of sectional quarterly reports	- An ongoing activity - 3 annual reports already available.
3.4.2 Info. collection	- Lack of clear direction; if the main target is information of indigenous species or residents' needs. - Human resource problem	- Data collected but mainly on medicinal trees
3.5 Extension material	- No period target set	- Several pamphlets have been prepared - The activity should be made continuous - The activity is not quantifiable
3.6.1 Newsletter	- Contribution of articles taking too long	- 3 newsletter issues already circulated and 4 <sup>th</sup> issue underway
3.6.2 Media	- Financial constraints - No target number of times set	- Media such as radio, TV and newspapers have been used severally - Publicity is expensive
3.6.3 Seminar	- Editing of the last seminar proceedings continuing	- Successfully conducted as scheduled
3.6.4 Mobile show	- Successfully coordinated and conducted - Reports compiled	- There is high demand for the shows in areas outside the target zone
3.7 Model	- Activity successfully completed	- Printing, binding and distribution awaited

2. After the Project

Activity	Contribution	Sustainability	Changes
3.1.1 Clarify info. flow	- FD and KEFRI linkages strengthened	- Activity is internalized within key implementing institutions	- Organizations to exercise flexibility in information flow
3.1.2 Prepare guideline	- Useful guidelines to be generated in information management.	- Should be implemented	- Practical adoption needed with amendments and periodic updating
3.2 Regular meeting	- Monitoring progress of activity	- Incorporation into existing liaison committees	- Frequency to be reduced - Strengthening of membership of liaison committee
3.3.1 Publication & catalogue	- Make access to documents easy - Improved presentations - Improved information handling	- Highly sustainable - Continuous activity	- Updates required as new systems change
3.3.2 Exch. info.	- Technology sharing and transfer	- Costs prohibitive	- Reduce frequency of visits
3.3.3 Successful case	- Documentation of information generated for future access		
3.4.1 Keep record	- Documentation of project activities	- Continuous and sustainable	- Merge with ongoing reporting systems
3.4.2 Info. collection	- Understanding interests and indigenous knowledge of farmers and extension agents	- Results to be incorporated into research continuously	- To be more focused on more relevant information
3.5 Extension material	- Increased knowledge among participants	- Highly sustainable	- Harmonization and wider consultations
3.6.1 Newsletter	- Created awareness and publicized the project and related farm forest development issues	- Sustainable	- To be incorporated into KEFRI and FD newsletter Coordination and editorial membership to change
3.6.2 Media	- Increased publicity of SOFEM activities and achievements	- Sustainable but costly	- To be incorporated within institutional framework of FD and KEFRI
3.6.3 Seminar	- Sharing information - Increased publicity - Improved documentation	- Sustainability is difficult (debatable)	- Data and information can be presented in other seminars
3.6.4 Mobile show	- Increased publicity and awareness at grassroots level	- Cost prohibitive	- Can be conducted at a cost (cost-sharing) - Joint shows with other organizations - Consultancy for NGOs
3.7 Model	- Late PO item introduced to describe the extension model developed	- Not sustainable	- Need for the project to adjust

Others

- Rigidity of PO was pointed out, as PO can be changed only through the approval of the Joint Steering Committee.
- Absence of Japanese expert for information activities constrained timely implementation of programs. But no severe problems arose though some Kenyan counterparts and Japanese experts were overloaded to back it up.
- The strong points in Japanese aid are infrastructure support, material provision and capacity building. The weak

points are financial support for counterparts, collaboration with partners including beneficiaries and formation of joint budgetary consultations, which sometimes affected the efficient funding from the Kenyan side.

- The project target area is clearly designated as 4 divisions but it is not specified whether it is all farmers. However, the project is working with selected farmers within the target area.
- It was explained that liaison committees consist of technical and policy committees and were formed to strengthen the tie between FD and KEFRI.
- There were some opinions that Activity 3.7 should have been added as Activity 2.11 in the activity for extension.
- The importance of information activities was emphasized as noted below.
  1. Information is a strong tool for the capacity building of people. Technical development also needs information dissemination to be utilized among farmers practically. Therefore publication should be continuous.
  2. Information strengthens the linkage among concerned institutions.
  3. Training also requires various information.
  4. Information dissemination is very important to farmers for technical transfer but still very wide area are left with no adequate information.
  5. Stakeholder analysis should be done to structure local residents and also to withdraw their feedback.
  6. There are still many information sources produced through the project. They should be documented.

**Accomplishment of Information Activity**

Activity	Indicator			Schedule																						
				1998				1999				2000				2001				2002						
	Outcome	Status	Accomplishment	1	2	3	4	1	2	3	4	1	2	3	4	1	2	3	4	1	2	3	4			
3 Collect, synthesize and disseminate information on social forestry extension				Up, schedule, Down, actual accomplishment																						
3.1 Make preparations for information activities																										
3.1.1 Clarify information flow on social forestry extension	Report	Completed	100%																							
3.1.2 Prepare guideline for information activities	Guideline	Completed	100%																							
3.2 Hold regular meetings	Frequency	Monthly	85%																							
3.3 Collect and analyze of information from outside sources																										
3.3.1 Collect publications and make catalogue	No. of publication No. of catalogue	Cataloguing	85%																							
3.3.2 Exchange information with concerned institutions	No. of report	3 visits 3 reports	70%																							
3.3.3 Collect and analyze successful cases of established farm forests	No. of cases No. of analysis	3 visits 3 reports	70%																							
3.4 Collect of information accumulated through project activities																										
3.4.1 Keep record of project activities	No. of annual report	3 reports	76%																							
3.4.2 Collect information from farmers or extension agents	No. of information sheets No. of analysis	Reset	40%																							
3.5 Develop extension materials on establishment of farm forest for extension agents	No. of extension materials	On going	75%																							
3.6 Disseminate information through publications and events																										
3.6.1 Publish project newsletter	No. of newsletters published No. of newsletters distributed	3 NLs	75%																							
3.6.2 Disseminate information through other media	No. of times	Several times	65%																							
3.6.3 Hold seminar on social forestry	No. of seminars No. of report	2 seminars 1 report	90%																							
3.6.4 Implement mobile show	No. of shows No. of attendance	>7,000	100%																							
3.7 Develop a social forestry extension model	Task force report Model	Not distributed yet	95%																							

## Workshop Result for SOFEM Project Evaluation

A workshop to evaluate the SOFEM Project by managers of KEFRI and FD was held on 27 March 2002 at the conference room in KEFRI Kitui Center from 10:00am to 5:00pm. These are the result of discussion during the workshop.

Attendants: FD                    Mr. A.M.Gondo; DFO, Mr. P.Kariuki (Chairman)  
                   KEFRI HQ                    Mr. M.O.Mukolwe, Mr. P.Owuor, Mr. P.Barasa  
                   KEFRI Kitui                    Mr. J.Kimondo; Center Director, Mr. C.J.Amuwatta M, Ms.J.Kimiti  
                   SOFEM/JICA                    Mr. M.Nakamura  
                   F.E.Mission                    Mr. T.Kuwahara

### 1. Efficiency

- It is expected that the overall project has been implemented efficiently and all outputs have been on the right track for achievement because no severe issue has arise to affect outputs, although there were no exact data available to check latest accomplishment of outputs during the workshop. The member of the final evaluation mission shall check the latest outputs' accomplishment along the indicators of PDMe.
- Staff changes on Kenyan side and absence of Japanese expert for information activities constrained timely implementation of programs. But no severe problems arose though some Kenyan counterparts and Japanese experts were overloaded to back it up.
- Ministry of Finance and Planning did not allocate appropriate counter budget to FD for project activities because it was not designated on R/D (Record of Discussion) before the start of the Project. Therefore budgetary constraints of FD influenced efficient implementation unpreferably. But as the important role of FD was made clearer in the whole Project, FD has started receiving the budget for SOFEM since last year.
- The most inputs from SFTP were effectively utilized in the Project and some equipment such as vehicles and experimental devices were utilized more than expectations. But some other facilities like the guesthouse and auditorium require improvement or new establishment.
- There were difficulties in smooth communication between KEFRI and FD offices because they belonged to different ministries at the initial stage of the Project. But the communication gap was solved after both of them were posted under the Ministry of Environment and Natural Resources due to structural change of Kenyan Government.

### 2. Effectiveness

- The project purpose has been almost fully achieved as the indicators of PDMe have been fulfilled and the latest report of the Joint Steering Committee (June 2001) shows the appropriate progress at that time.
- All outputs contributed highly to achieve the project purpose. Namely Output 1 has been establishing a technical foundation, Output 2 has been being developed basing on Output 1 as a direct extension mean, and Output 3 has been on progress to disseminate those outputs to concerned institutions and farmers.
- All activities contributed highly to achieve outputs as they have been accomplished according to PO mostly as scheduled.



- Indicators of some excessive activities had been corrected at the time of the mid-term evaluation and those activities would have been completed in time.
- To achieve the project purpose, the Project added the activity 3.7 to formulate the extension model with the approval of the Joint Steering Committee, and the model was proposed through the efforts of the Extension Task Force. According to its report, the Project is in the 1<sup>st</sup> stage (Enlightenment and Trial) of the long-term development strategy for forest extension in ASALs, while 2<sup>nd</sup> and 3<sup>rd</sup> stages are “Implementation” and “Expansion and Stability” respectively.

### 3. Impact

- The accomplishment of the overall goal within 5 years would be impossible. More time would be needed because the target area of the overall goal is very wide and new challenges arise with time.
- Impacts to local residents are the awareness increase for social forestry, adopted technologies increase, possibility of income generation, nutrition improvement and amenity improvement.
- The Project influenced local leaders, development agents and institutions positively on social forestry through seminars, visits, mobile shows and workshops. The effect went beyond the Kenyan border through the regional social forestry training course.
- Technical adoption was enhanced through utilization of locally available materials.
- Tree coverage increase reduces pressure on natural vegetation.
- There was positive attitudinal change of residents to tree planting especially for indigenous tree source.
- Some farmers started managing commercial forestry.
- Women’s participation contributes a lot to the extension of social forestry, and, in some training courses, more women participated. They usually have higher economical and social consistency.
- KEFRI found a way to get self help financial resource, such as training courses, consultancy services, seed/seedling sales and facility rental.

### 4. Relevance

- Many emphases are being given for social forestry on the Forests Bill 2000 and Kenyan forestry Development Policy 2000 because farm forestry/ social forestry will play a key role for the forestry development in ASALs, which occupies 80 % of national land.
- The Project accords with the residents’ needs in terms of the production of fruits trees and high value trees, provision of timbers and fodders, and the Project also provided solutions for income generation and upgrading in socio-economic, technique and environmental aspects.
- The strong points in Japanese aid are infrastructure support, material provision and capacity building. The weak points are rigid planning, collaboration with partners including beneficiaries and formation of joint budgetary consultations, which sometimes affected the efficient funding from the Kenyan side.
- The structural flow of the Project, starting from the technical research, its adoption in the field with farmers and extension, was reasonable.

## 5. Sustainability

- The enactment of Forests Bill 2000 and ratification of Kenyan forestry Development Policy 2000 are awaited in near future and both of them support the extension of farm forestry strongly. The policy is dynamic and must reflect the needs of the country.
- FD and KEFRI have enough technical capacity and institutional tie through the Memorandum of Agreement between them as implementing agencies, although practical activities may scale down depending on priorities and financial availability in case no external fund expected.
- Many farmers have already planted trees with minimal or no project support and some even started commercial forestry. It means that residents' intension for tree planting is sustainable.
- Activities for social forestry extension and farm forest development were institutionalized therefore sustainability can be said very high. And it is possible to adjust the scale of activities from time to time as financial resources allow.

## 6. Recommendation and Lessons learned

- The Project should increase awareness and publicity on the social extension model among related institutions and local farmers.
- Documentation of project outcomes/ activities should be implemented because there are still valuable products, which have not been documented.
- In the areas where they have similar weather condition and residents' needs as the project target area, required information should be provided more and the information developed locally should also collected.
- Findings/ results produced through the project should be publicized and applied for broader way.
- Capacity building of counterparts and partner farmers should be enhanced.

## 7. After the Project

Development is a process and a project is a powerful tool for contributing to development, such as improving quality of life and enhancing environmental conservation within the framework of PRSP in Kenya. Intensification and diversification of farm forestry is very important for greater impact, and SOFEM Project extension will contribute to realizing this goal.

Producing outputs is quite possible technically because the programs have been institutionalized within the implementing institutions. Farm forestry and dry land forestry is core program in KEFRI, and forest extension services will be the core activity of FD. However, implementation will be subjected to prioritizing and availability of funds.

Tasks to achieve the overall goal are

1. Policy and legislative support to influence appropriate improvement (from FD/ other stakeholders)
2. Technical development (KEFRI)
3. Enhancement of social forestry extension system (FD)
4. Development of sustainable extension infrastructure (KEFRI/ FD/ e.g. JICA)

SOFEMプロジェクト成果品一覧表

全体	普及タスクフォース最終報告書
	普及活動方針書
技術開発	技術開発成果報告書
	Tiva試験林展示林管理経営計画書
	各試験取りまとめ資料集
農地林造成（技術）	農地林試験成果報告書
	種苗・造林指針
農地林造成（普及）	農地林普及事例集
	経営方針書
	プロファイル調査表
	選定ガイドライン
	普及ガイドライン
普及手法/情報	プロジェクト活動報告書
	普及方針書
	情報ガイドライン
	図書カタログ
	スタディーツアー報告書
	ニュースレター
	社会林業セミナー報告書
	モバイルショー報告書
	モバイルショーインパクト調査
	ビデオ3巻（プロジェクト概要、H <sup>1</sup> イロツフォレスト、デモII）
	ホームページ
その他	各種マニュアル・パンフレット
	各種短期専門家報告書
	年次報告書

JICA