

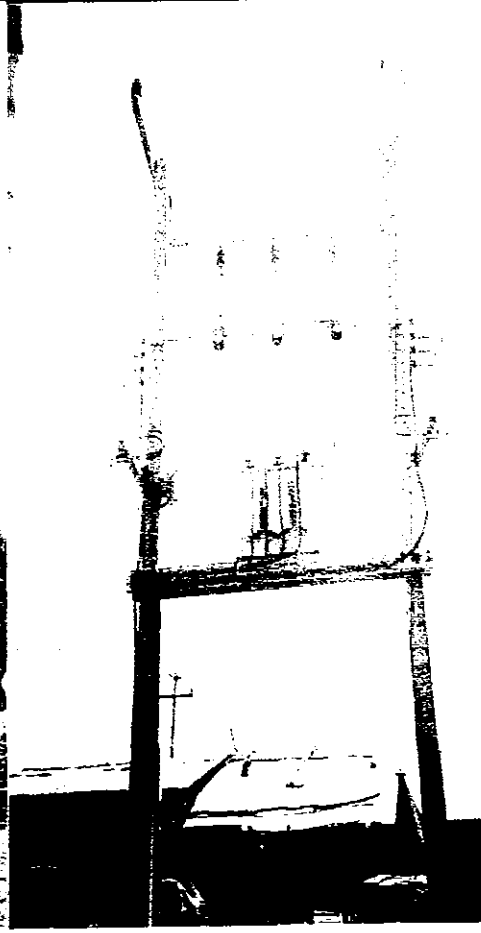
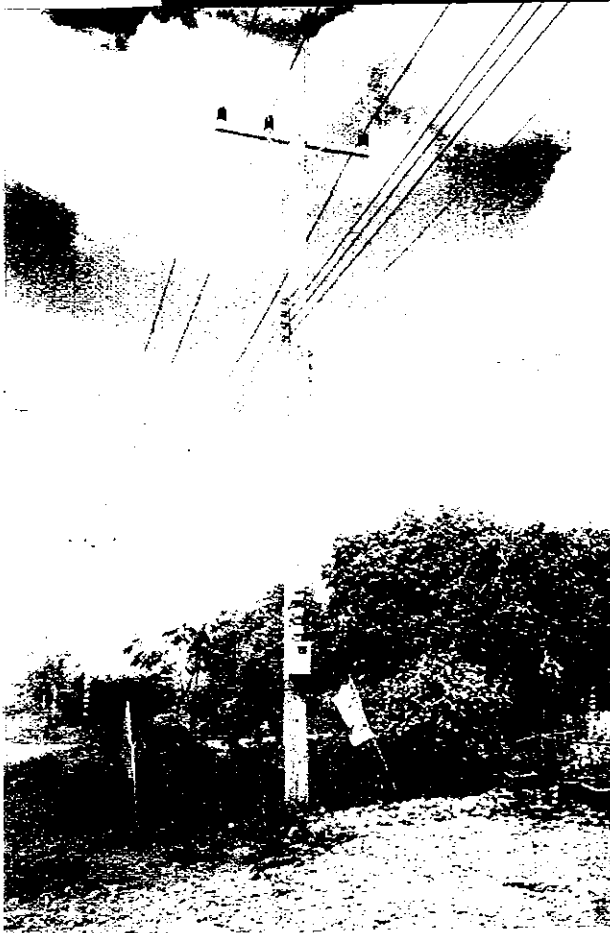
## **6. POWER DISTRIBUTION SYSTEM**

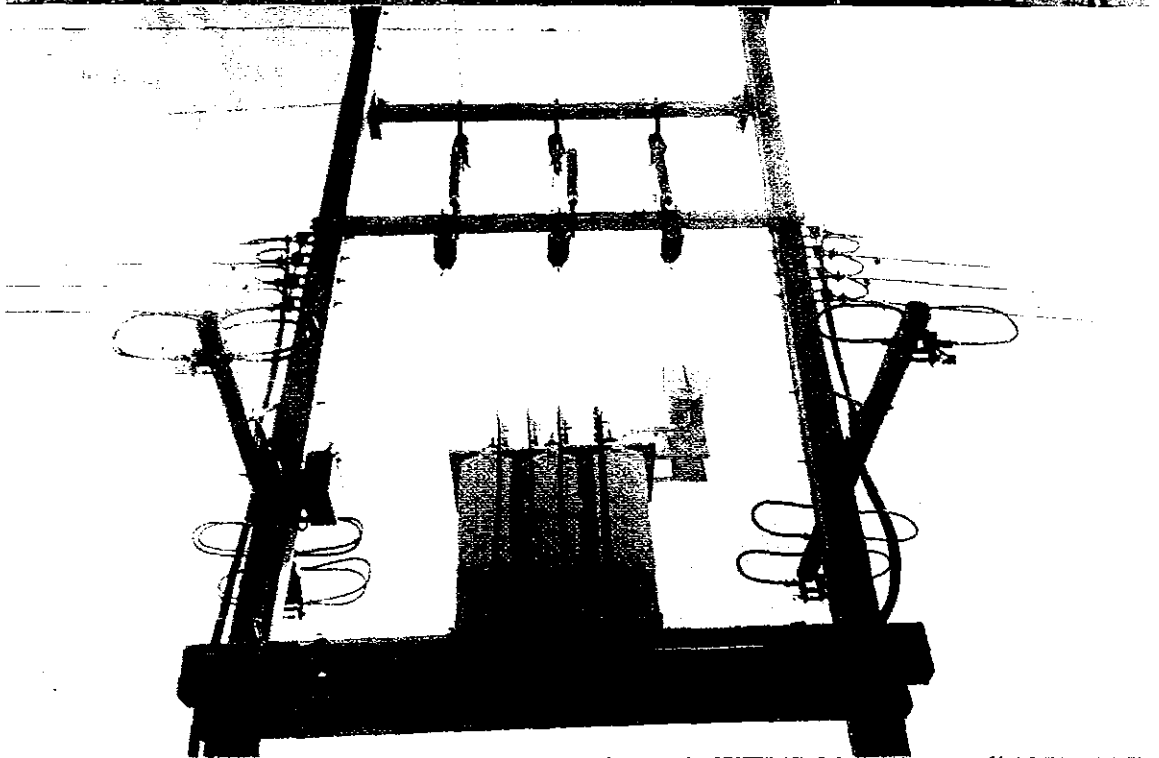
6-1 - MSP DEVELOPMENT COMPANY (D)	79
6-2 - FRANASIE IMPORT EXPORT COMPANY (D)	83
6-3 - ANCO BROTHERS COMPANY (D)	84
6-4 - DUTY FREE SHOP (D)	89
6-5 - DISTRIBUTION LINES	90



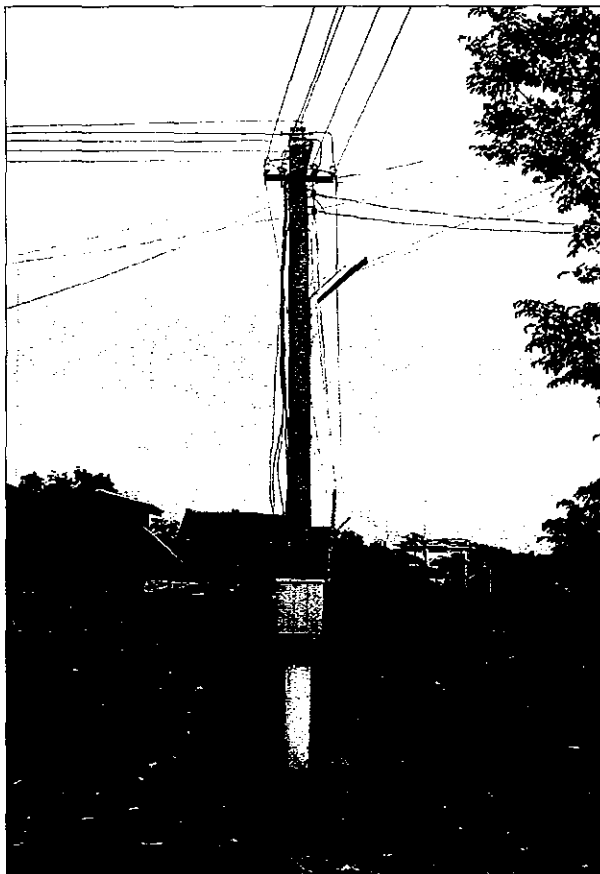
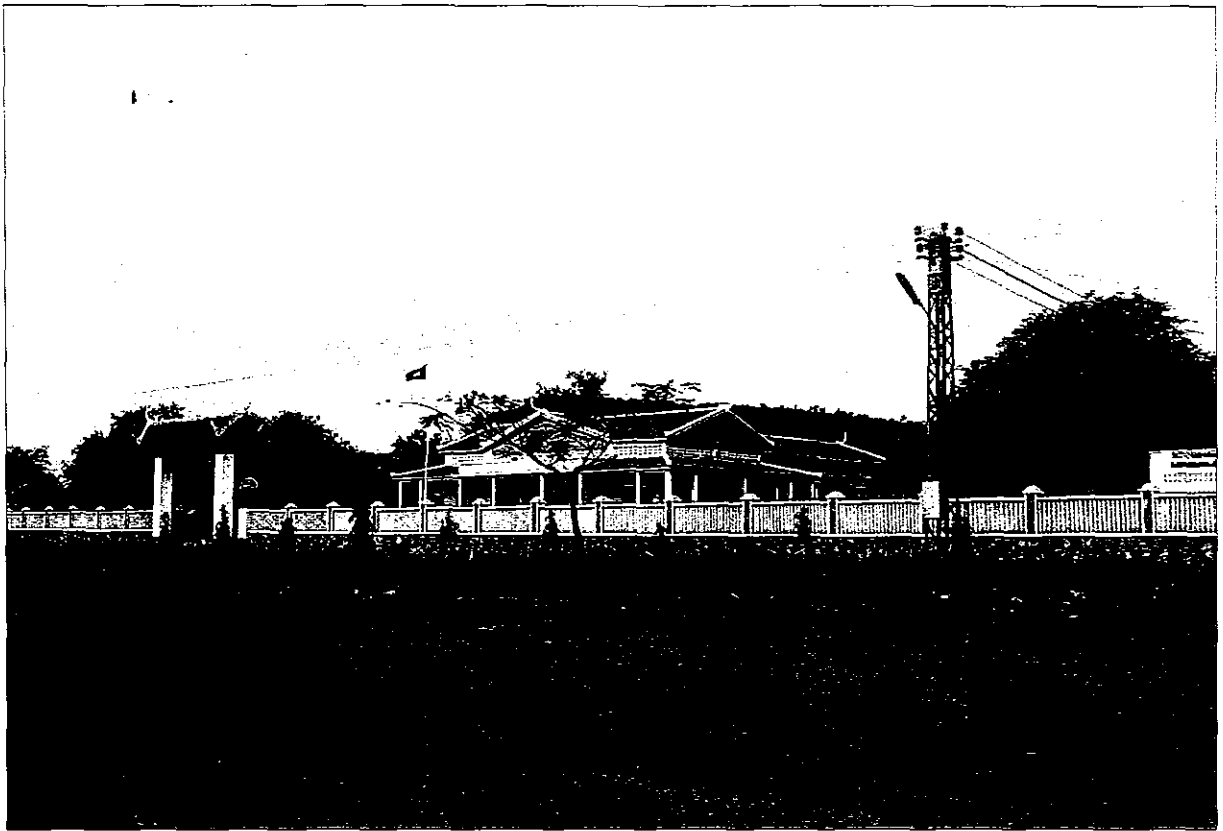
**6-1 - MSP DEVELOPMENT COMPANY (D)**

The authorized distribution area, where M.S.P DEVELOPMENT CO., LTD has the right to provide the electricity in Phum Phsar Prum (Close to Cambodia-Thai border), Sangkat Stung Khsach, Khan Salakrao, Pailin City.









POWER DISTRIBUTION LINES IN PAILIN

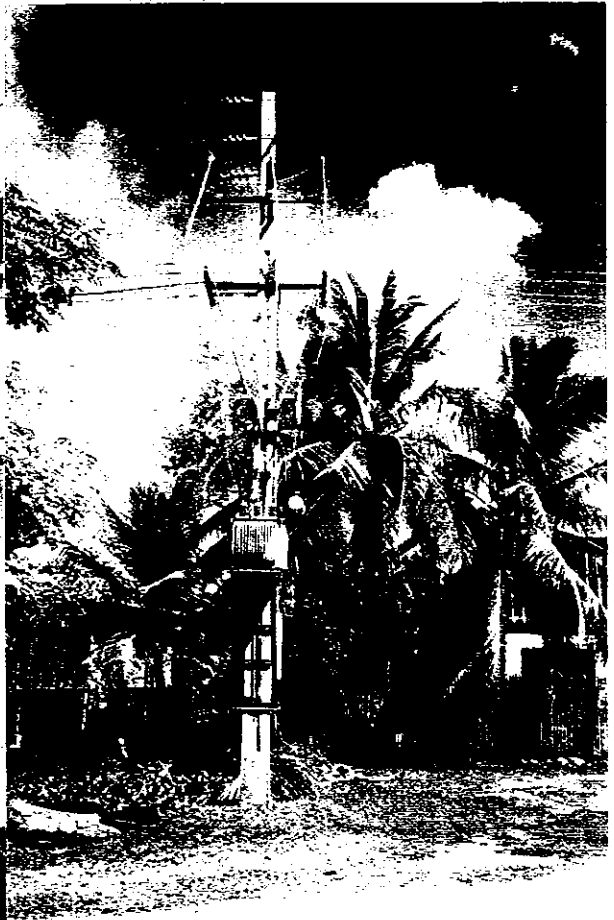
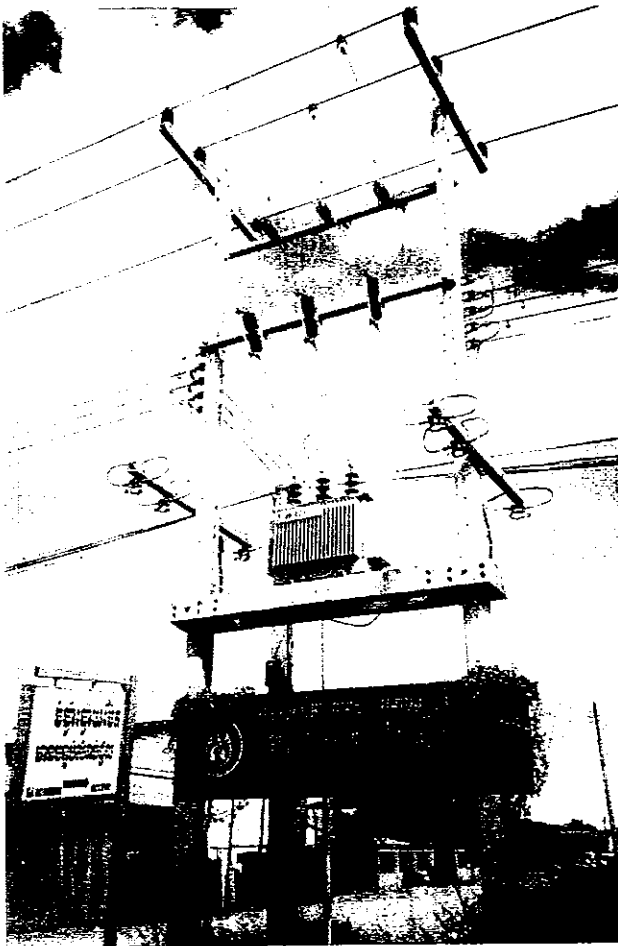
**6-2 - FRANASIE IMPORT EXPORT COMPANY (D)**

The authorized distribution area, where Franasie Import Export Company has the right to provide the electricity and supply service is District Center of Kamrieng, Phnom Proeuk and Sampeou Loun in Battambang Province.



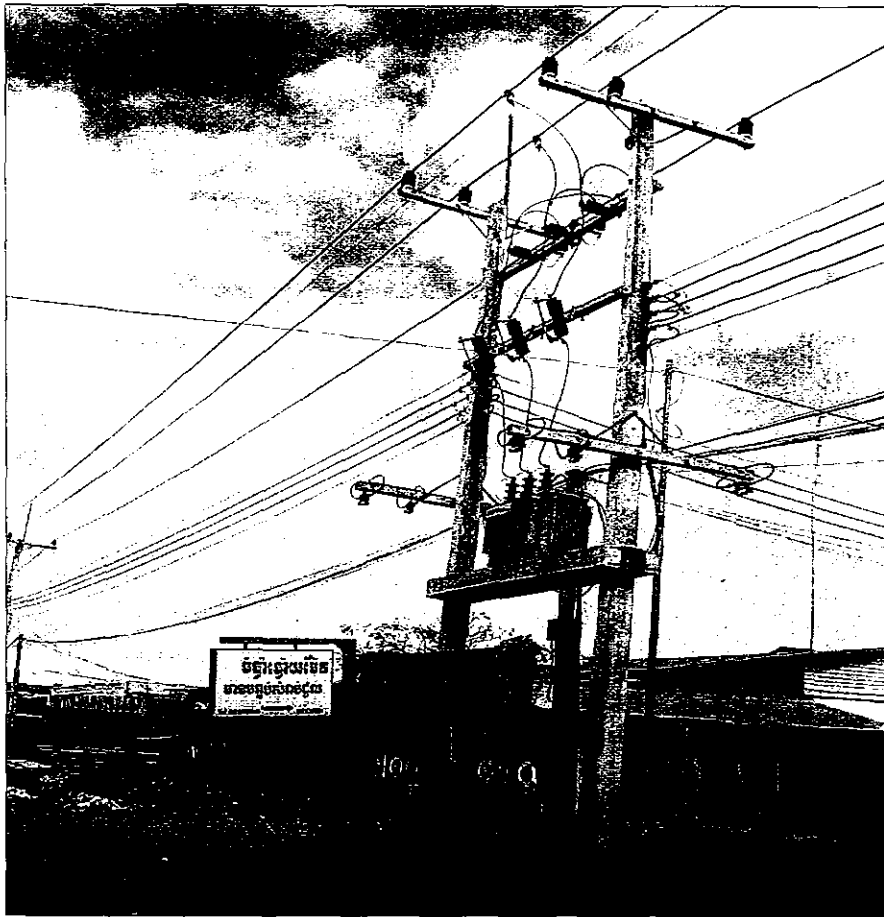
**6-3 - ANCO BROTHERS COMPANY (D)**

The authorized distribution area, where Anco Brothers Co., Ltd has the right to provide the electricity in Ochrev District, Banteay Meanchey Province.

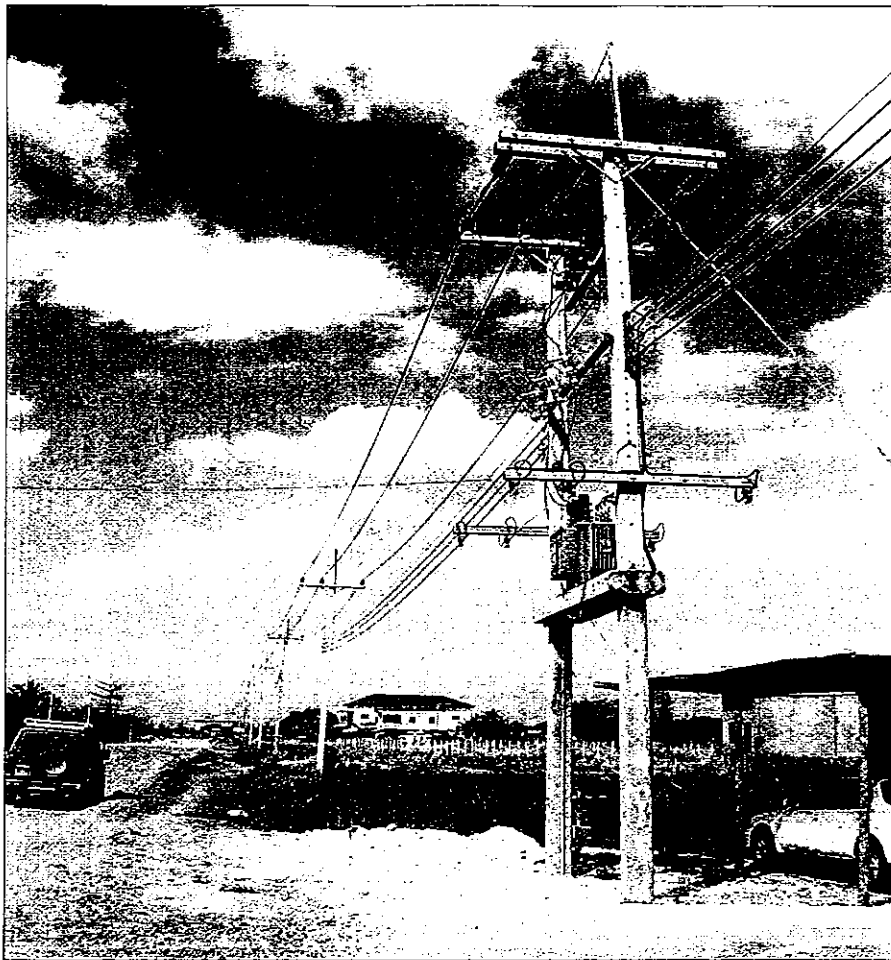




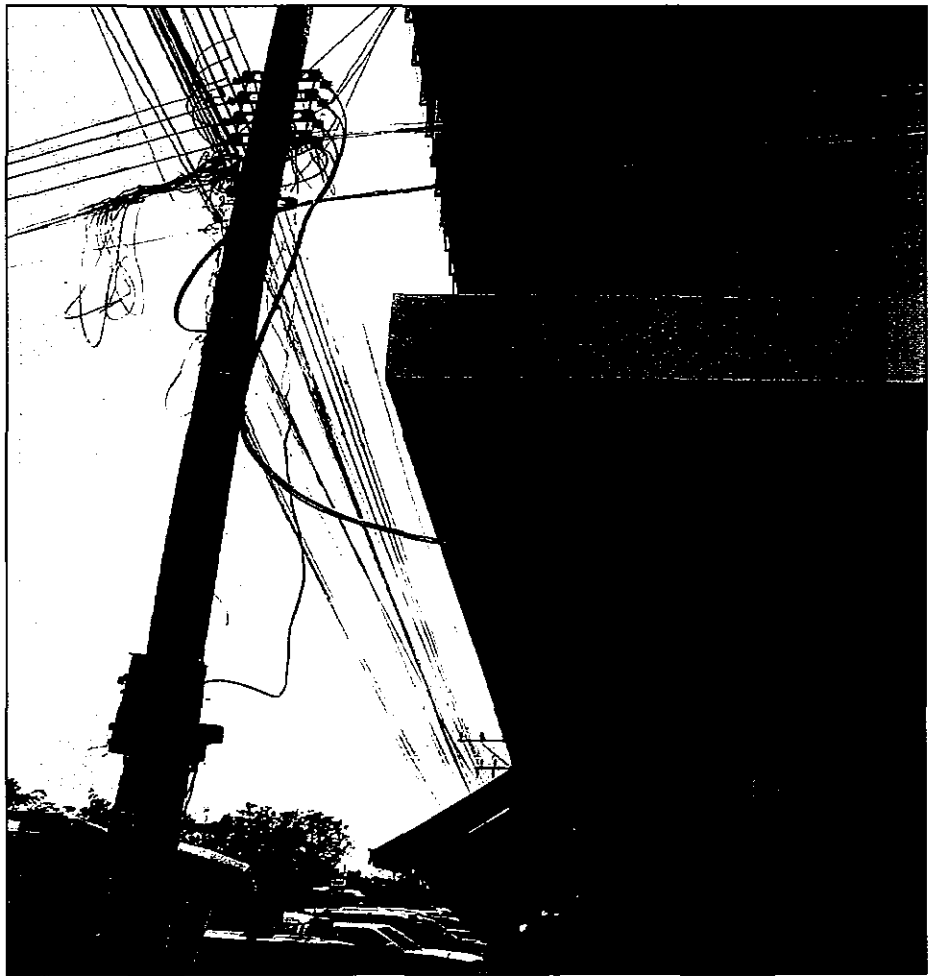
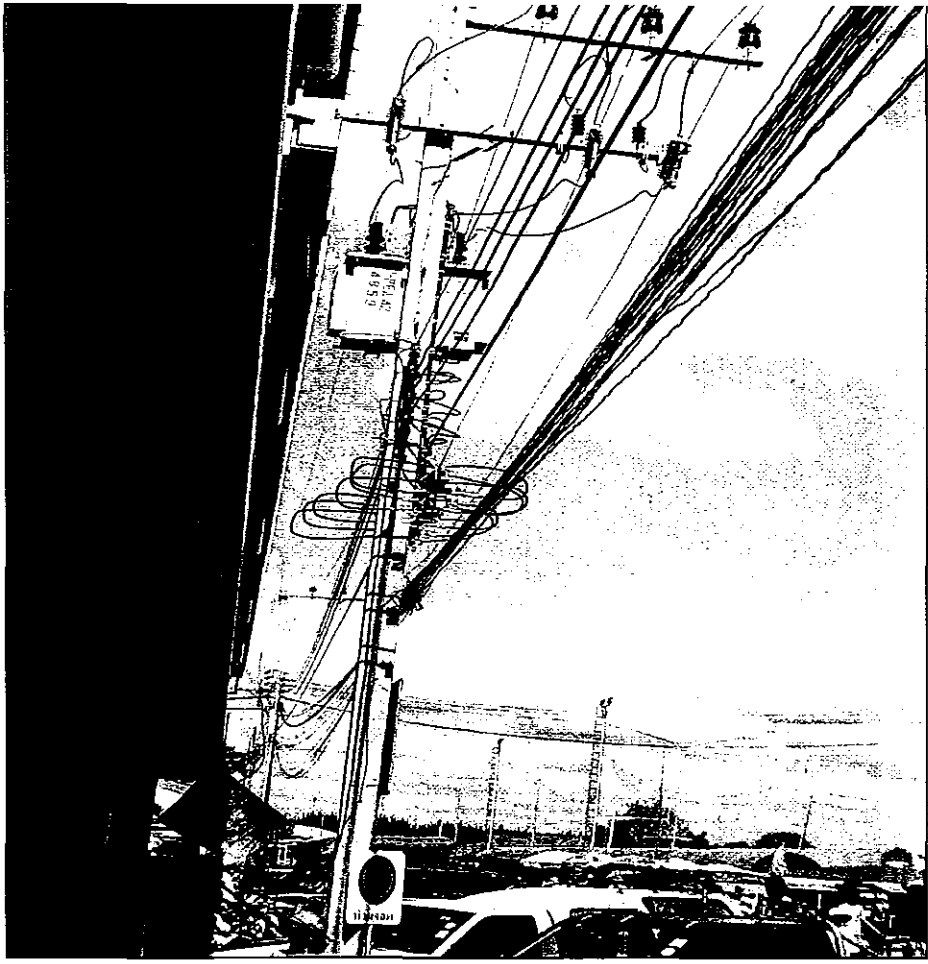




DISTRIBUTION LINES IN OCHROV (BANTEY MEAN CHEY PROVINCE)



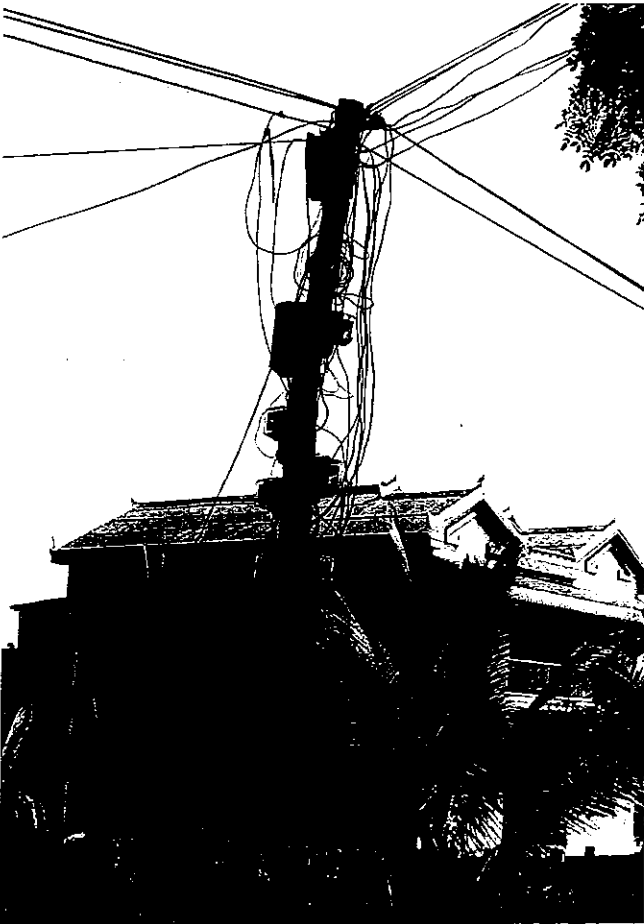
DISTRIBUTION LINES IN OCHROV (BANTEY MEAN CHEY PROVINCE)



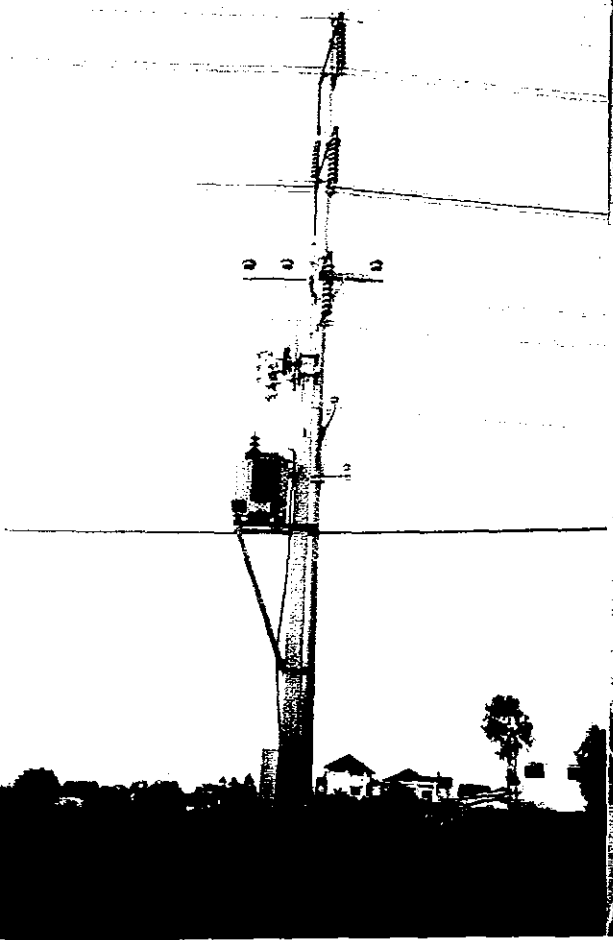
POIPET DISTRIBUTION (IN THAILAND SIDE)

#### 6-4 - DUTY FREE SHOP (D)

The authorized distribution area, where Duty free shop Co.,Ltd has the right to provide the electricity in(1)- Provincial Town of Koh kong and (2)-Osmarch Town, Khum Osmarch, Samrong District, Odder Meanchey Province.



6-5 - DISTRIBUTION LINES

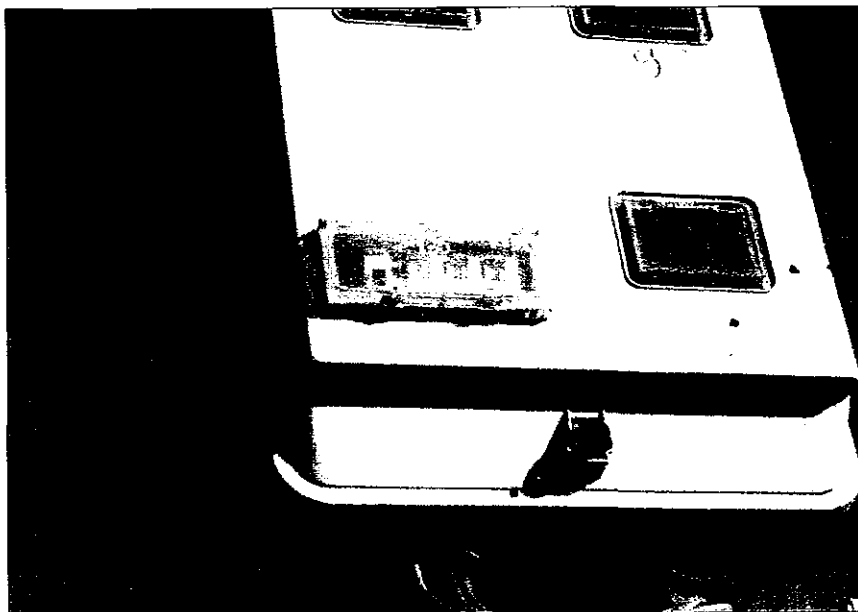
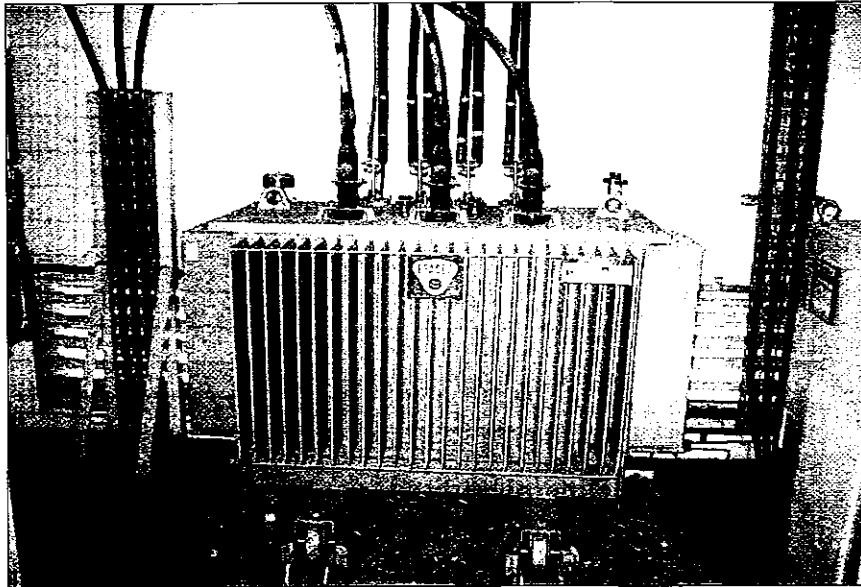
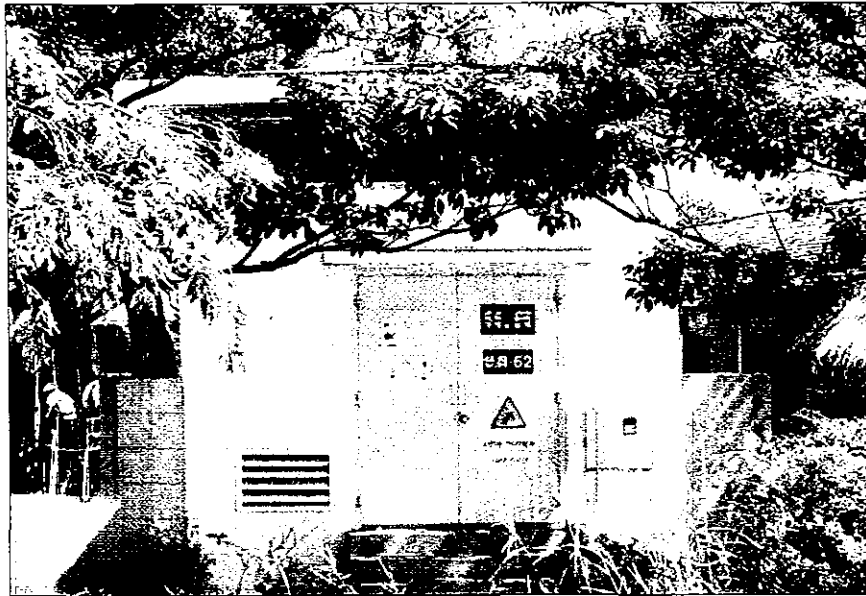


6-6 - EDC DISTRIBUTION LINES

6-6-1 - PHNOM PENH DISTRIBUTION

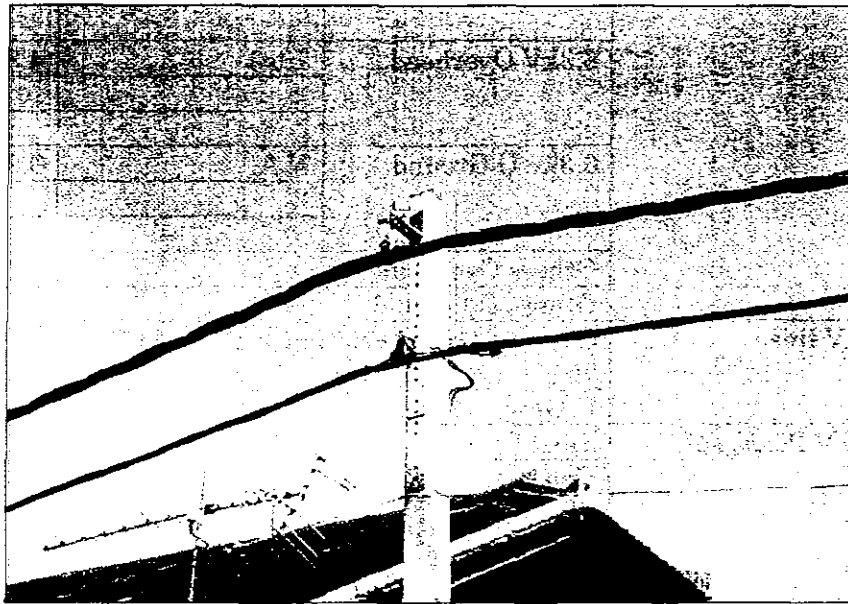
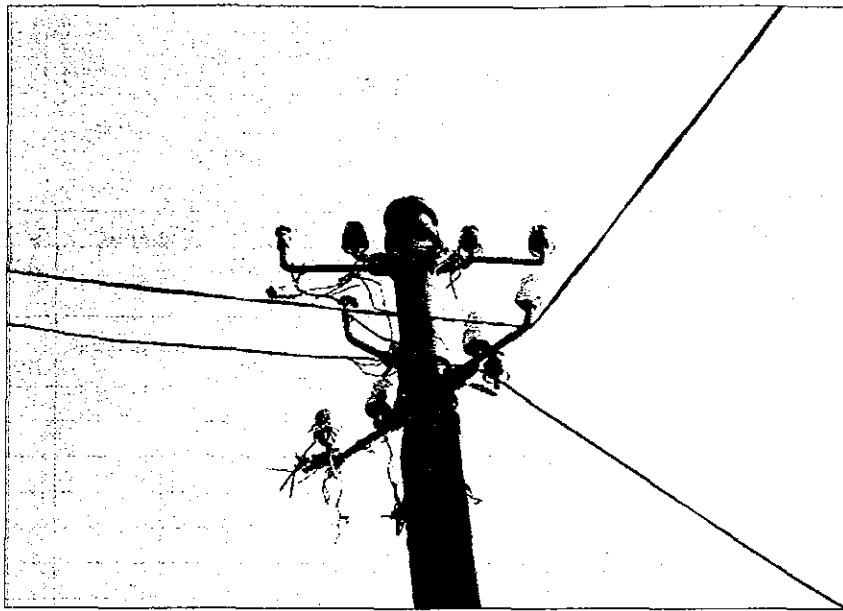
Name of Area: PHNOM PENH

No.	Description	Size of Conduct	Quantity	
1	MV lines	22kV Overhead	150x3	170.34
			120x3+70x1	
		22kV U Ground	240x3	208.49
			150x3	21.88
			70x3	0.79
		15kV Overhead	120x3	29.79
			70x3	
		15kV U Ground	95x3	8.61
		6.3kV Overhead	70x3	
			70x2+50x1	
			50x3	
			35x3	
			16x3	
		6.3kv U Ground	95x3	
70x3				
50x3				
23x3				
	Others Overhead			
	Others U Ground			
2	LV lines	Overhead: others	591.00	
		U Ground: others	80.36	
3	MV Poles, set	Steel Poles	82	
		Concrete Poles	4,314	
4	LV Poles, set	Steel Poles	647	
		Concrete Poles	16,039	
		Wood Poles		
5	Transformers, set	1000kVA	73	
		630kVA	143	
		400kVA	143	
		315kVA	25	
		200kVA	43	
		100kVA	40	
		50kVA	5	
		25kVA	5	



PHNOM PENH DISTRIBUTION PICTURES



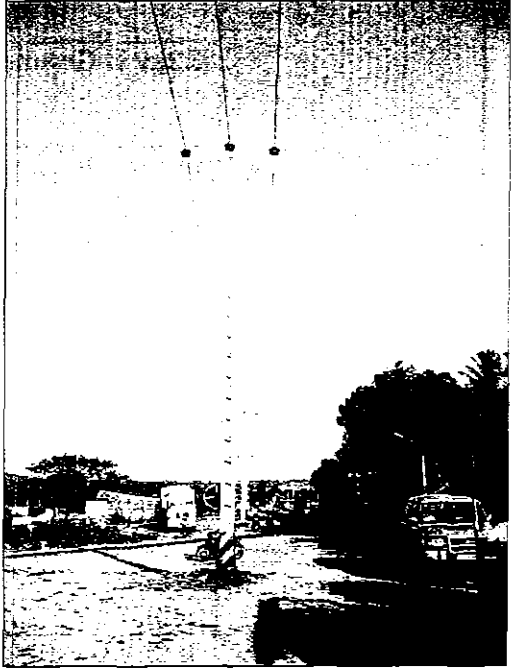
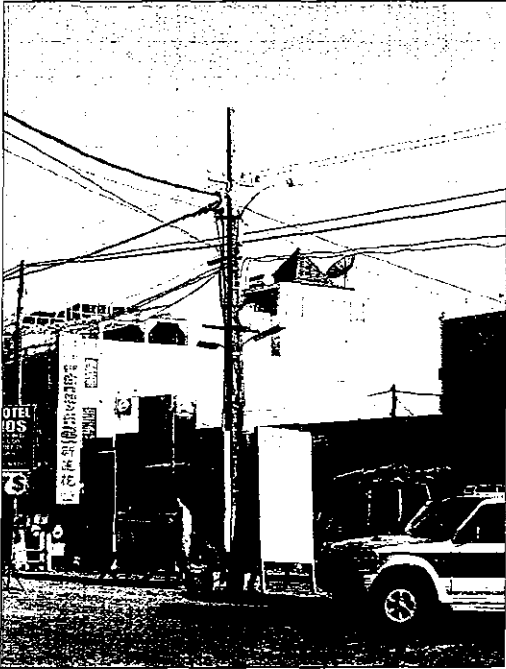
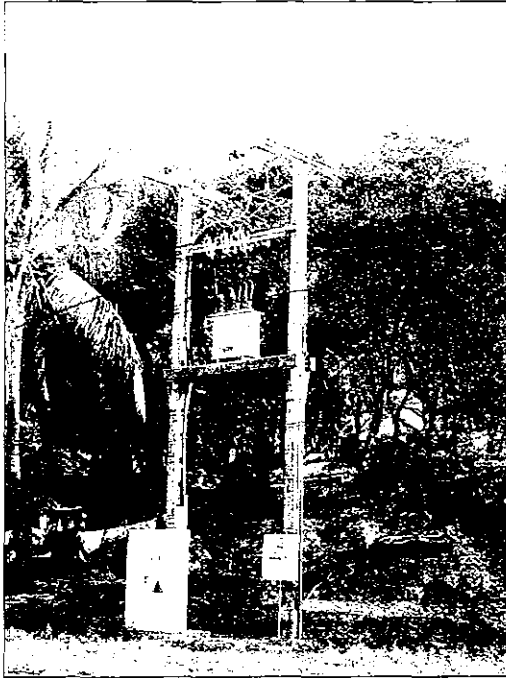


PHNOM PENH DISTRIBUTION PICTURES

## 6-6-2 - SIHANOUKVILLE DISTRIBUTION

### Name of Area

No.	Description	Size of Conduct	Quantity	
1	MV lines	22kV Overhead	150x3	9.4
		22kV U Ground	240x3	52.1
		15kV Overhead		
		15kV U Ground		
		6.3kV Overhead	70x3	4.3
2	LV lines	Overhead 150x3+70x1+16x2; 150x3+70x1 70x4	71.30	
		U Ground 150x3+70x1	29.50	
3	MV Poles, set	Steel Poles		
		Concrete Poles	575	
4	LV Poles, set	Steel Poles		
		Concrete Poles	2,173	
		Wood Poles	9	
5	Transformers, set	1000kVA	4	
		630kVA	5	
		400kVA	19	
		315kVA		
		250kVA	6	
		200kVA		
		160kVA	3	
		100kVA	1	
		50kVA		
		40kVA	1	
	25kVA			

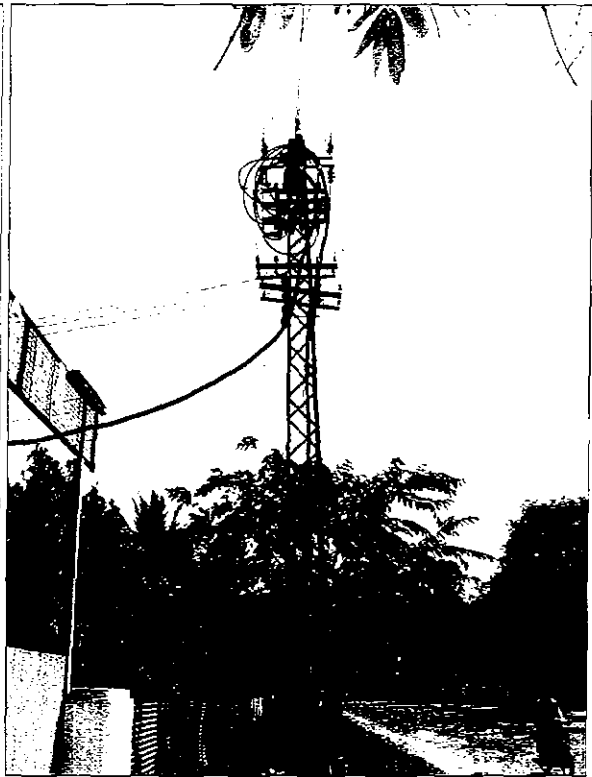


SIHANOUKVILLE DISTRIBUTION PICTURES

### 6-6-3 - TAKEO DISTRIBUTION

Name of Area

No.	Description	Size of Conduct	Quantity		
1	MV lines	22kV Overhead			
		22kV U Ground			
		15kV Overhead	70x3	29.79	
		15kV U Ground			
		6.3kV Overhead			
		6.3kv U Ground			
		Others Overhead			
		Others U Ground			
		2	LV lines	Overhead: others	32.81
				U Ground	
3	MV Poles, set	Steel Poles	26		
		Concrete Poles	146		
4	LV Poles, set	Steel Poles	6		
		Concrete Poles	65		
		Wood Poles	30		
5	Transformers, set	1000kVA			
		630kVA	1		
		400kVA	1		
		315kVA			
		200kVA			
		160kVA	6		
		100kVA	2		
		63kVA	2		
		50kVA			
		40kVA	1		
		25kVA			

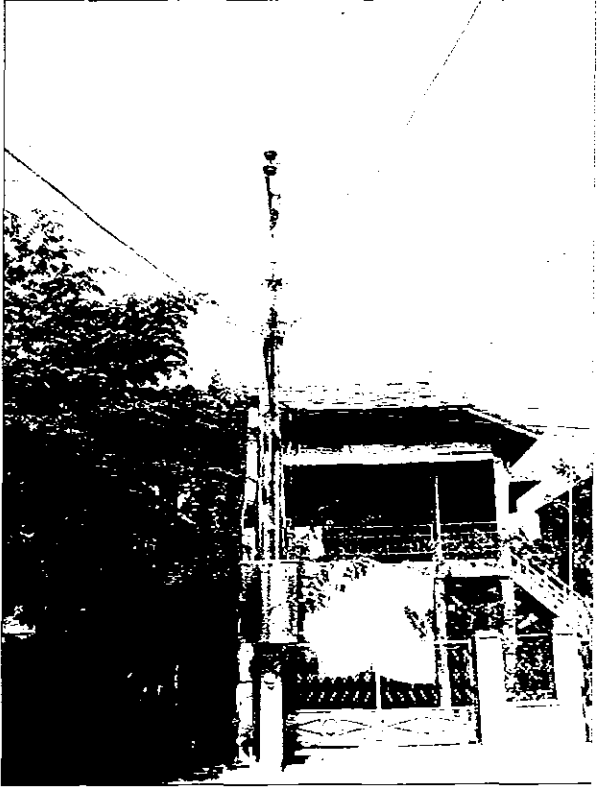
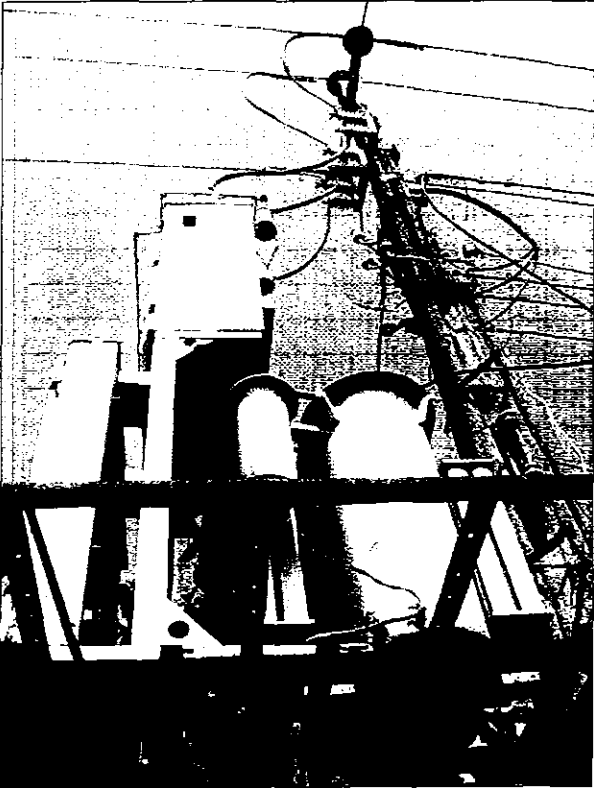
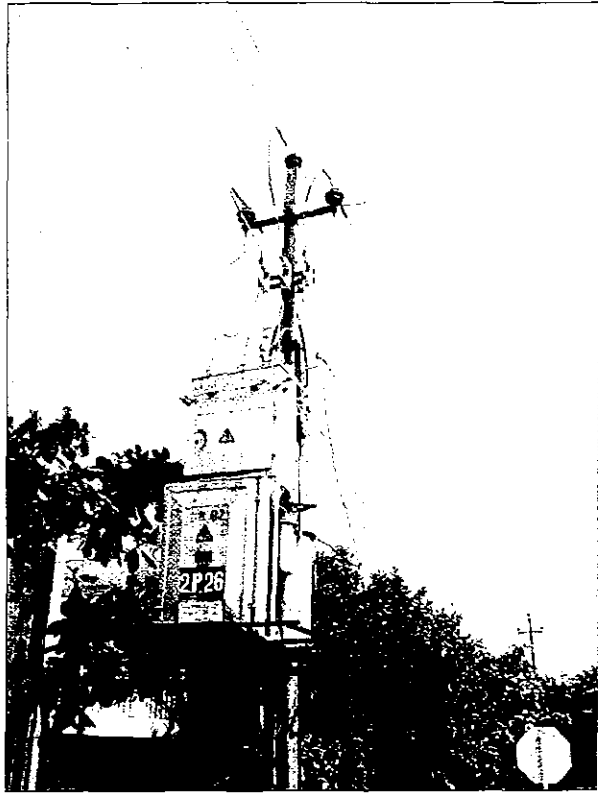
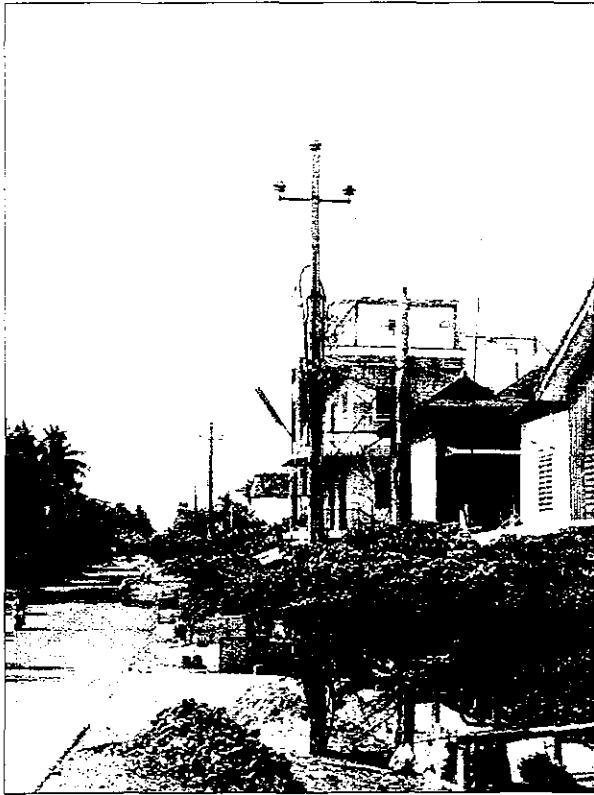


TAKEO DISTRIBUTION PICTURES

### 6-6-4 - KAMPONG CHAM DISTRIBUTION

Name of Area

No.	Description	Size of Conduct	Quantity	
1	MV lines	22kV Overhead		
		22kV U Ground		
		15kV Overhead		
		15kV U Ground		
		6.3kV Overhead	70x2+50x1	1.15
			16x3	1.45
		6.3kv U Ground	95x3	1.20
			70x3	1.16
			23x3	3.70
		Others Overhead		
		Others U Ground		
2	LV lines	Overhead 150x3+70x1;70x4;70x2;50x4;35x4;16x4; others	17.13	
		Ground		
3	MV Poles, set	Steel Poles	4	
		Concrete Poles	74	
4	LV Poles, set	Steel Poles	156	
		Concrete Poles	536	
		Wood Poles		
5	Transformers, set	1000kVA		
		630kVA	1	
		400kVA	2	
		315kVA		
		250kVA	3	
		200kVA	1	
		160kVA	4	
		100kVA	2	
50kVA				
25kVA				



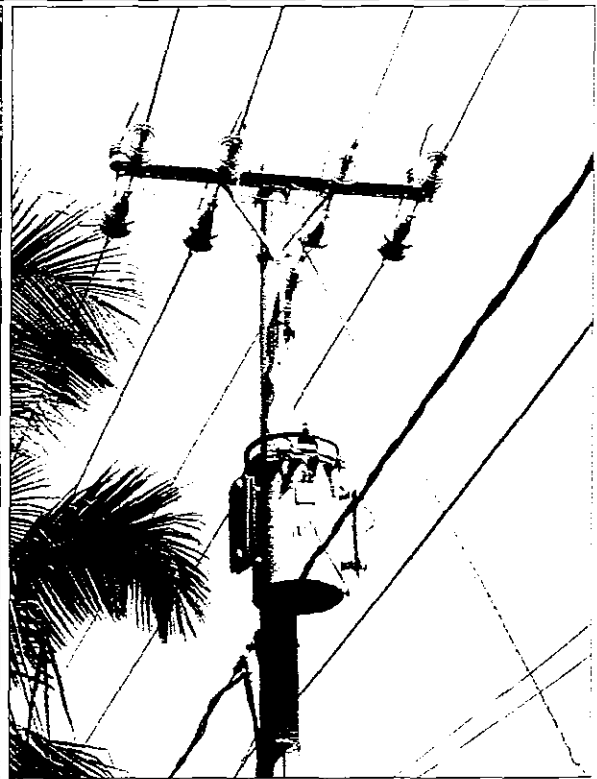
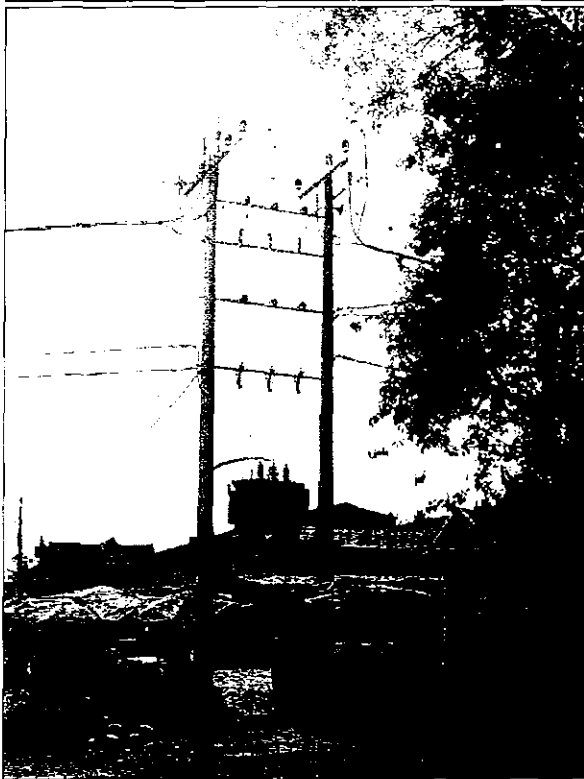
KAMPONG CHAM DISTRIBUTION PICTURES

## 6-6-5 - MEMOT DISTRIBUTION

### Name of Area

No.	Description	Size of Conduct	Quantity
1	MV lines	22kV Overhead	150x3
			120x3+70x1
		22kV U Ground	
		15kV Overhead	
		15kV U Ground	
		6.3kV Overhead	
		6.3kv U Ground	
	Others Overhead		
	Others U Ground		
2	LV lines	Overhead:70x4; 70x2	2.92
		U Ground	
3	MV Poles, set	Steel Poles	
		Concrete Poles	298
4	LV Poles, set	Steel Poles	
		Concrete Poles	173
		Wood Poles	
5	Transformers, set	1000kVA	
		630kVA	1
		400kVA	
		315kVA	1
		250kVA	1
		200kVA	
		100kVA	2
		50kVA	2
25kVA	3		



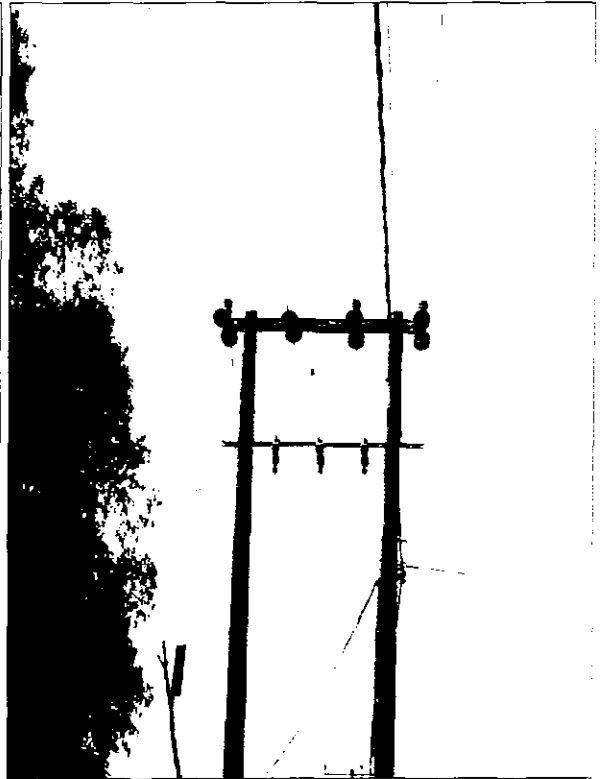
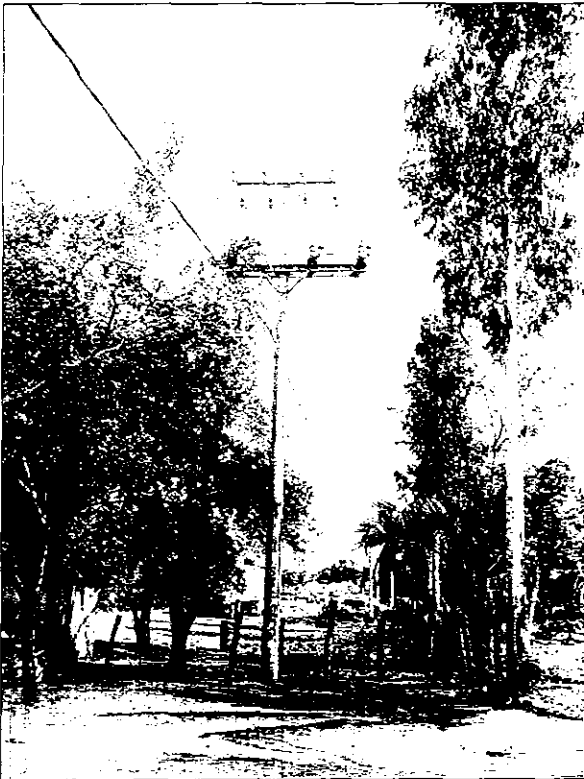


MEMOT DISTRIBUTION PICTURES

**6-6-6 - PONHEA KREAK DISTRIBUTION**

Name of Area

No.	Description	Size of Conduct	Quantity		
1	MV lines	22kV Overhead	120x3+70x1		
		22kV U Ground			
		15kV Overhead			
		15kV U Ground			
		6.3kV Overhead			
		6.3kv U Ground			
		Others Overhead			
		Others U Ground			
		2	LV lines	Overhead: 70x4; 70x2	6.48
				Ground	
3	MV Poles, set	Steel Poles			
		Concrete Poles	366		
4	LV Poles, set	Steel Poles			
		Concrete Poles	80		
		Wood Poles			
5	Transformers, set	1000kVA			
		630kVA	1		
		400kVA			
		315kVA	1		
		250kVA	1		
		200kVA			
		100kVA	1		
		50kVA	3		
		25kVA			
10kVA	1				



PONHEA KREAK DISTRIBUTION PICTURES

6-6-7 - SIEM REAP

Name of Area: SIEM REAP

No.	Description	Size of Conduct	Quantity	
1	MV lines	22kV Overhead	150x3	5.48
		22kV U Ground	240x3	19.05
			150x3	12.51
		15kV Overhead		
		15kV U Ground		
		6.3kV Overhead		
		6.3kv U Ground		
	Others Overhead			
	Others U Ground			
2	LV lines	Overhead: 150x3+70x1+16x1;150x3+70x1;70x4	69.76	
		U Ground: others	11.45	
3	MV Poles, set	Steel Poles		
		Concrete Poles	116	
4	LV Poles, set	Steel Poles		
		Concrete Poles	2,109	
		Wood Poles		
5	Transformers, set	4000kVA	1	
		1000kVA	2	
		630kVA	9	
		400kVA	13	
		315kVA		
		250kVA	12	
		200kVA		
		100kVA	5	
	50kVA			
	25kVA			

## 6-6-8 - BATTAMBANG

Name of Area: BATTAMBANG

No.	Description	Size of Conduct	Quantity	
1	MV lines	22kV Overhead		
		22kV U Ground		
		15kV Overhead		
		15kV U Ground		
		6.3kV Overhead	70x3	3.98
			50x3	2.27
			35x3	1.41
		6.3kv U Ground	50x3	0.45
			Others Overhead	4.43
			Others U Ground	
		2	LV lines	Overhead: others
U Ground: others				
3	MV Poles, set	Steel Poles	21	
		Concrete Poles	270	
4	LV Poles, set	Steel Poles	138	
		Concrete Poles	683	
		Wood Poles	260	
5	Transformers, set	1000kVA		
		630kVA	2	
		400kVA	3	
		315kVA		
		250kVA	3	
		200kVA	2	
		160kVA	4	
		100kVA	3	
		80kVA	1	
		63kVA	2	
		50kVA		
25kVA				

6-6-9 - BAVET

Name of Area: BAVET

No.	Description	Size of Conduct	Quantity
1	MV lines	22kV Overhead	120x3+70x1
		22kV U Ground	
		15kV Overhead	
		15kV U Ground	
		6.3kV Overhead	
	6.3kv U Ground		
	Others Overhead		
	Others U Ground		
2	LV lines	Overhead: others	11.90
		U Ground: others	
3	MV Poles, set	Steel Poles	
		Concrete Poles	121
4	LV Poles, set	Steel Poles	
		Concrete Poles	216
		Wood Poles	
5	Transformers, set	1000kVA	
		630kVA	1
		560kVA	1
		400kVA	
		315kVA	
		250kVA	1
		200kVA	
		100kVA	3
		50kVA	2
	25kVA		

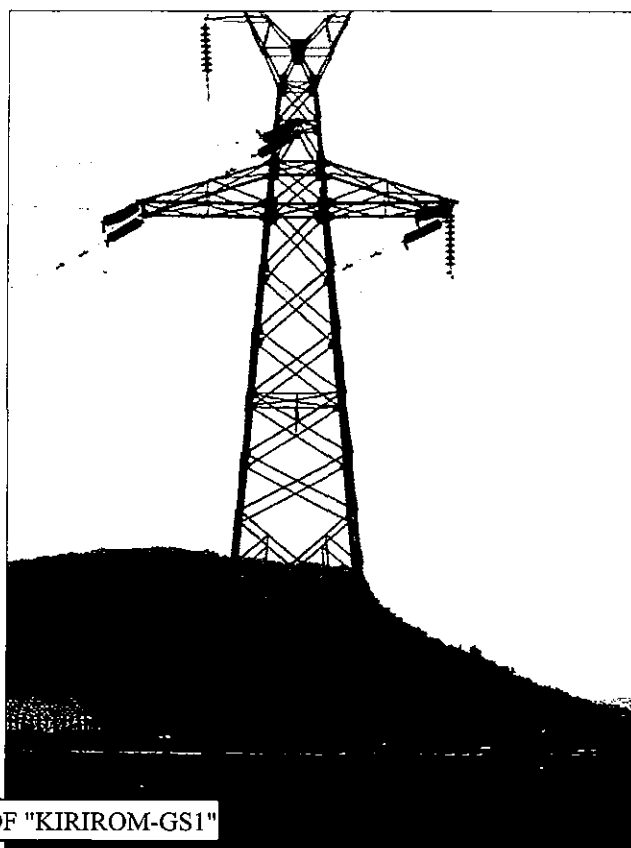
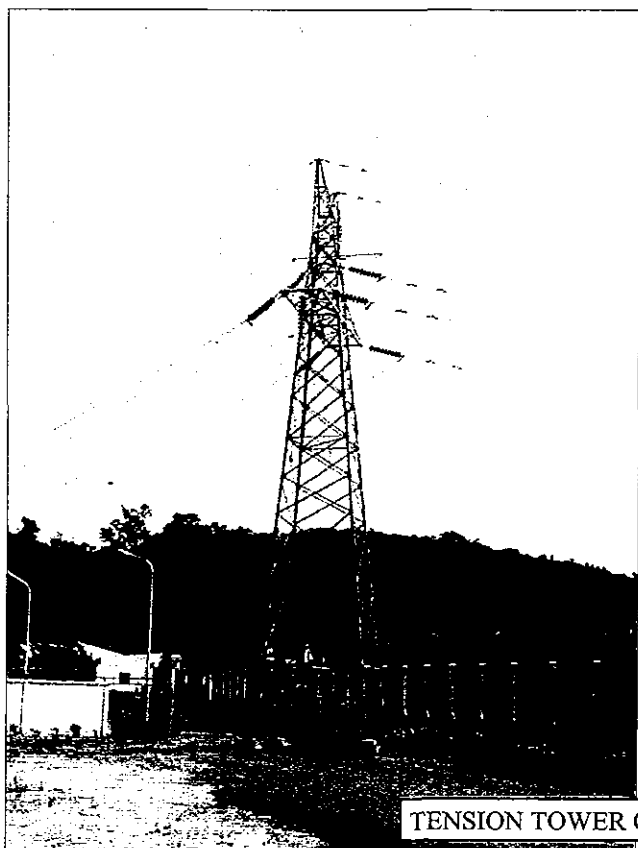
# **7. POWER TRANSMISSION SYSTEM**

- TRANSMISSION LINES 92
- SUBSTATIONS 94

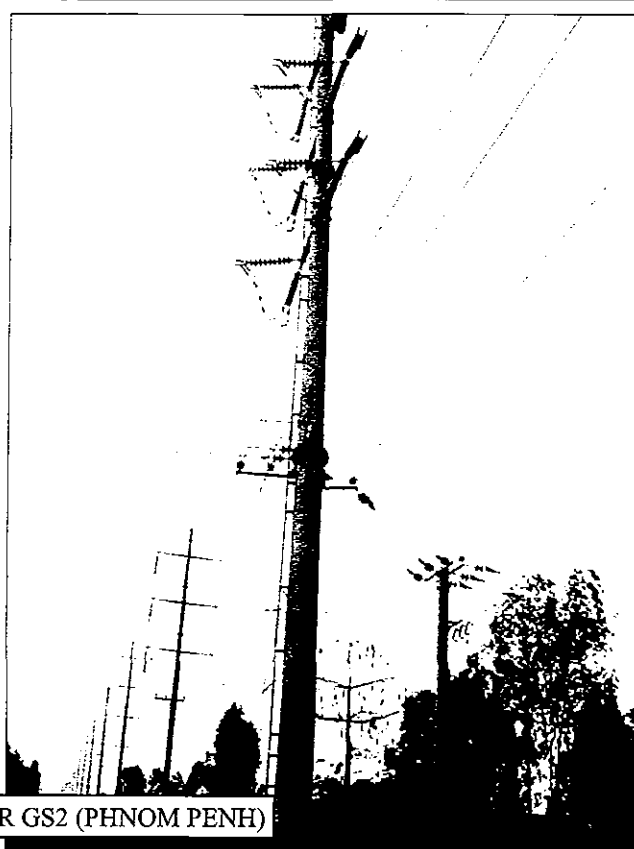
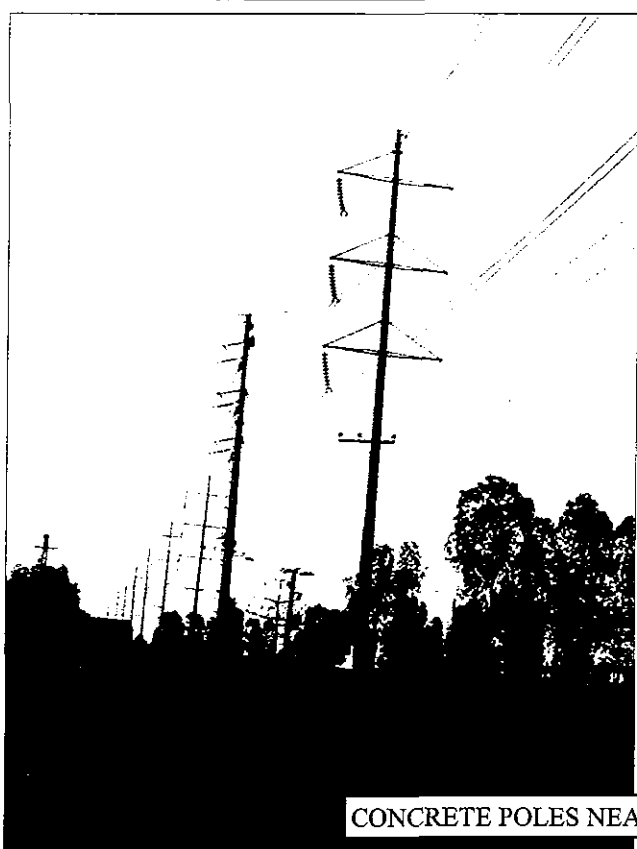




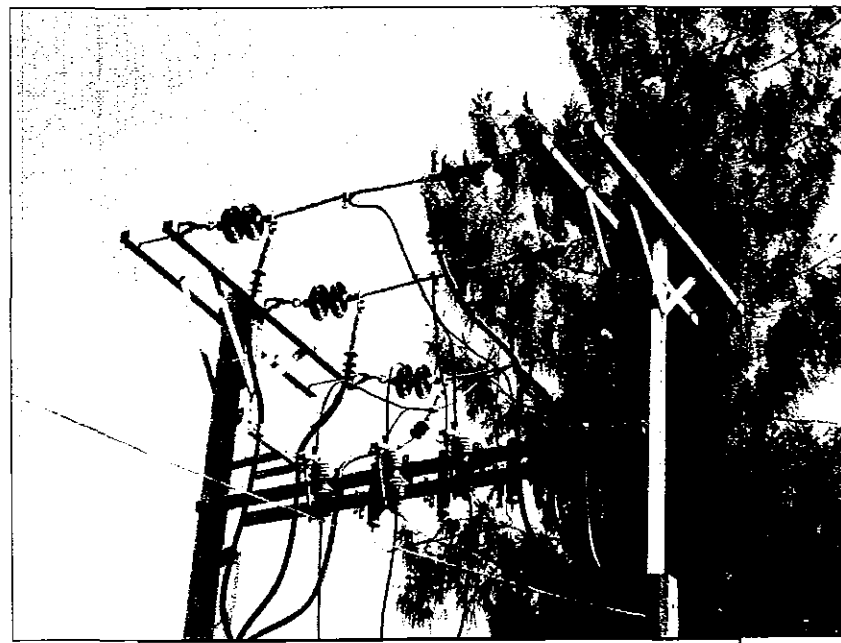
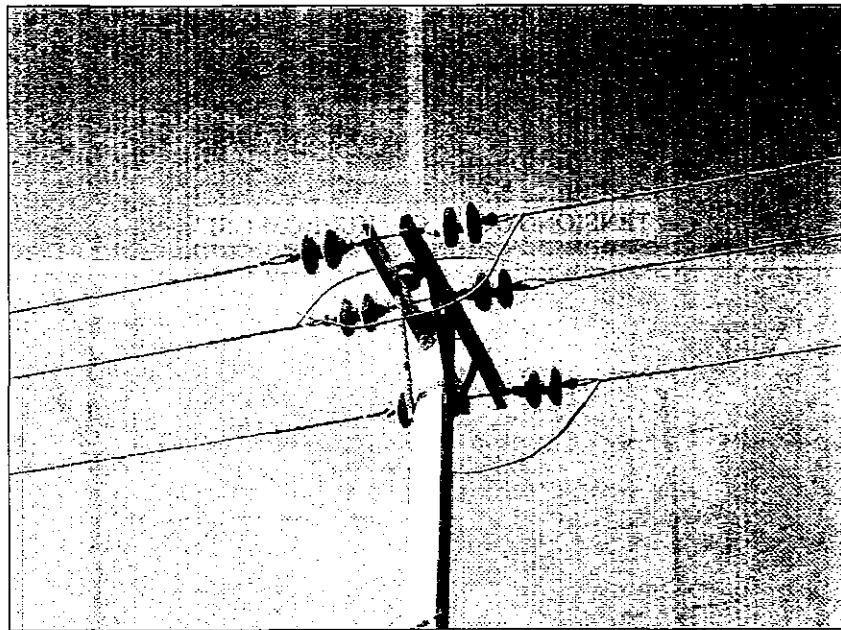
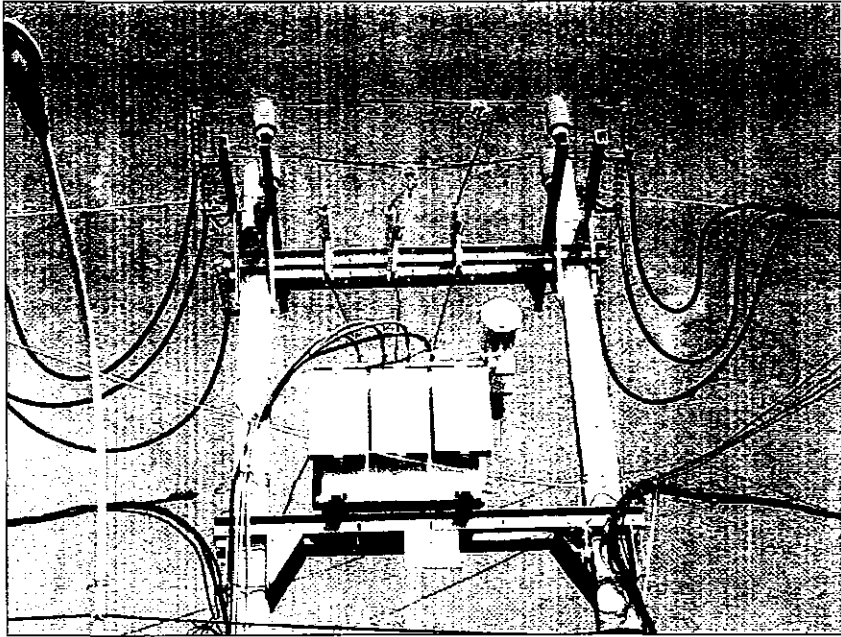
7-1 - TRANSMISSION LINES



TENSION TOWER OF "KIRIROM-GS1"

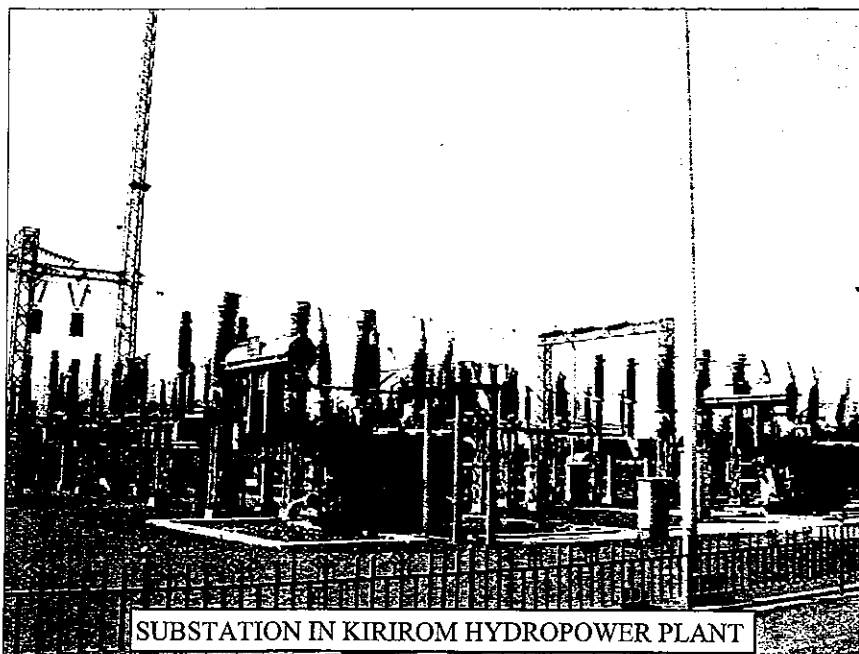
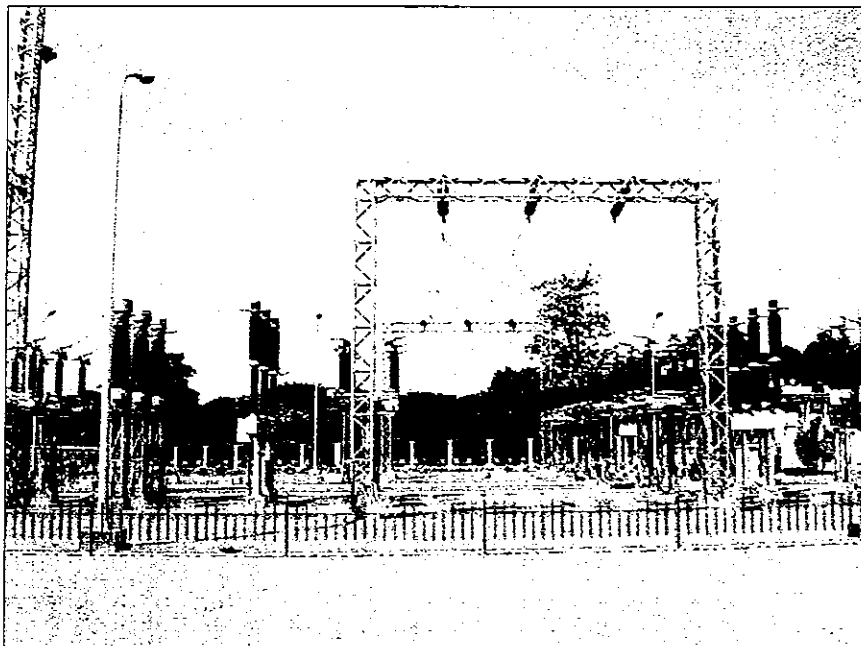
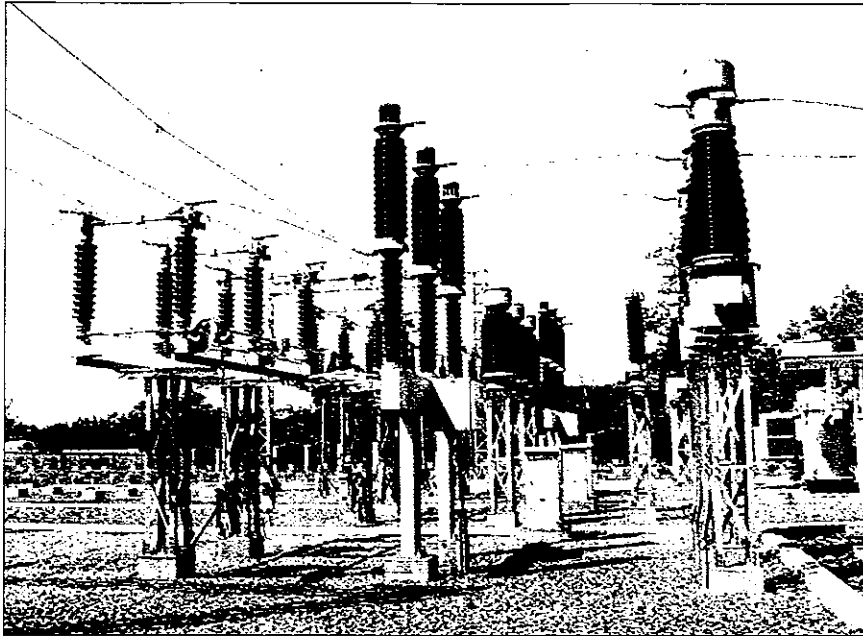


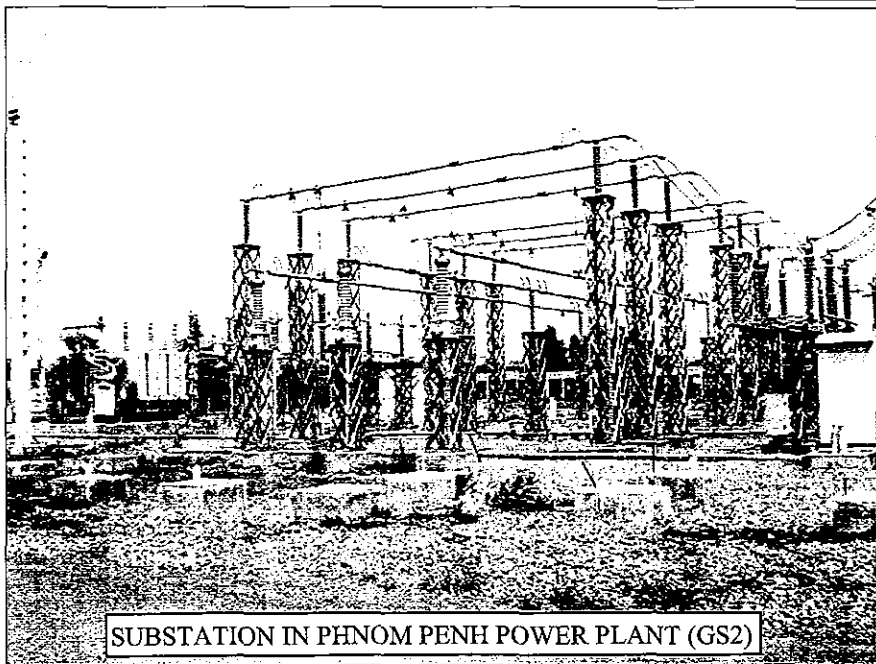
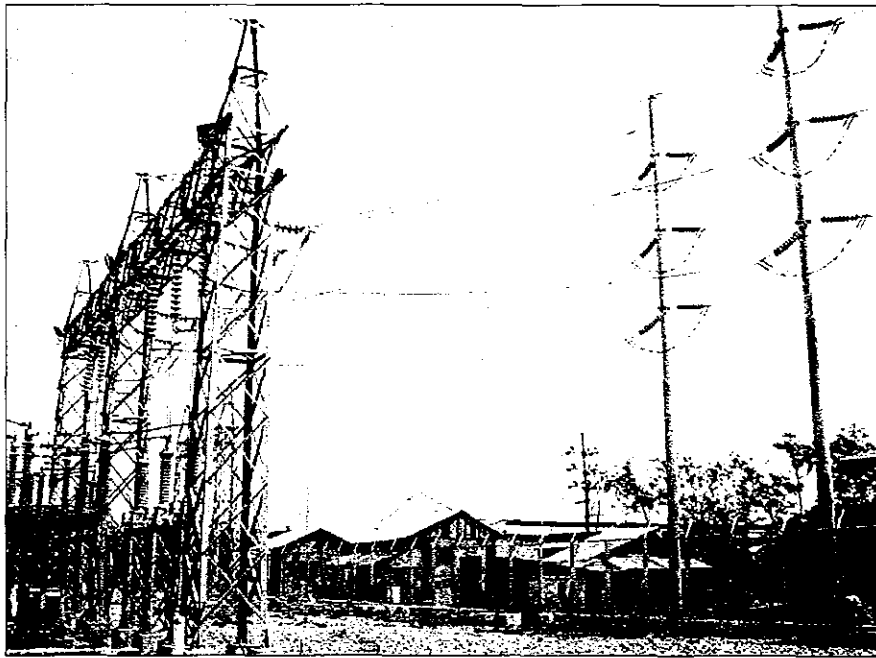
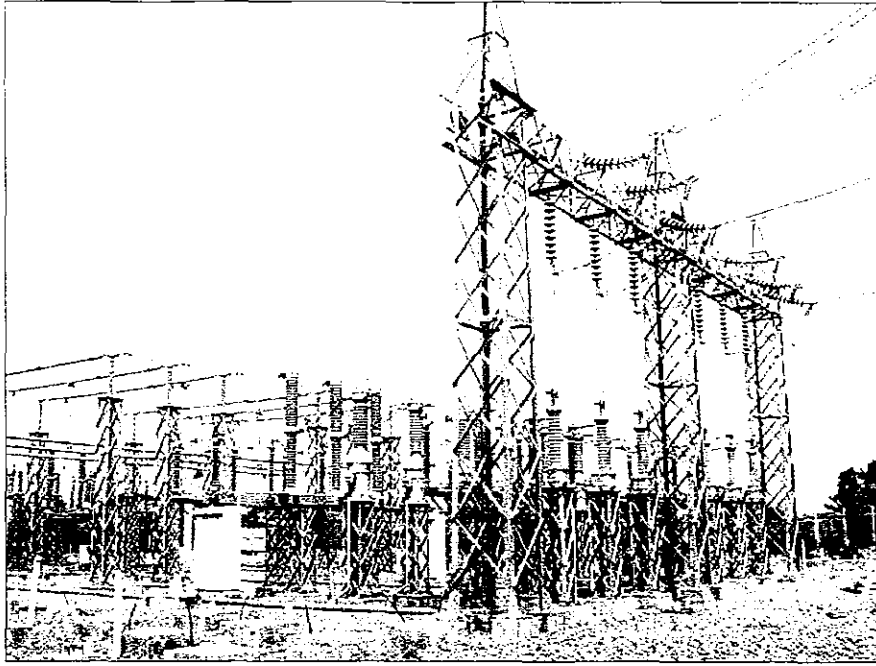
CONCRETE POLES NEAR GS2 (PHNOM PENH)



TRANSMISSION LINES IN PHNOM PENH AREAS

## 7-2 - SUBSTATIONS





## **8. OWN POWER GENERATION GREATER THAN 100KW**

TOTAL CAPACITY: 120MW  
EQUIVALENT TO 85% OF ALL OWN GENERATIONS IN CAMBODIA

○ PHNOM PENH: 78160kW	102
○ SIEM REAP: 27479kW	220
○ SIHANOUKVILLE: 9421kW	248
○ KAMPONG CHAM: 3980kW	269
○ BATTAMBANG: 585kW	274
○ PAILIN: 495kW	277



## **8-1- LIST OF OWN GENERATION**





8-1 - LIST OF OWN POWER GENERATION GREATER THAN 100KW

No.	NAME OF THE COMPANY	ADDRESS	TM, CAPACITY IN KW AND NUMBERS OF GENERATORS						TOTAL	TYPE OF BUSINESS	LOCATION		
			TRADE MARK	CAP.	NO.	TRADE MARK	CAP.	NO.				TRADE MARK	CAP.
1	NEW POINT Garment Factory	Rd. 5, Tuol Sanke, Phnom Penh	MITSUBISHI	280	1	MITSUBISHI	400	1			2	factory	Phnom Penh
2	CHAY HONG Hotel	Rd. 6A, Phnom Phenh	NIPPON	160	1	ISUZU	250	1			2	hotel	Phnom Penh
3	BIG A	Blvd. Monivong, Phnom Penh	DENYO	320	1						1	market	Phnom Penh
4	VI TAY Garment Factory	Rd. 5, Kilometer 6, Phnom Penh	CUMMINS	585	1	CUMMINS	315	2			3	factory	Phnom Penh
5	MITTAPHEAP Hotel	St. 174, Don Penh, Phnom Penh	DENYO	320	1	DENYO	240	1			2	hotel	Phnom Penh
6	ORCHIDEE Hotel	St. 174, Don Penh, Phnom Penh	DENYO	320	1	DENYO	320	1			2	hotel	Phnom Penh
7	K & A Garment Factory	Rd. 5, Phnom Penh	DENYO	240	1	DENYO	320	1	DENYO	48	3	factory	Phnom Penh
8	RIVERSIDE Hotel	Blvd. Sisowath, Phnom Penh	MITSUBISHI	200	1	DENYO	104	1	DENYO	200	3	hotel	Phnom Penh
9	SOKSAN Hotel	Rd. 5, Phnom Penh	MITSUBISHI	100	1	MITSUBISHI	80	1			2	hotel	Phnom Penh
10	SANTEPHEAP Restaurant	Blvd. Sihanouk, Phnom Penh	DENYO	100	1	DENYO	48	1			2	restaurant	Phnom Penh
11	NEW HOLLYWOOD Hotel	St. 47 Don Penh, Phnom Penh	MITSUBISHI	120	1						1	restaurant	Phnom Penh
12	SAM HAN CAMBODIA FABRIC	St. 68, Russey Keo, Phnom Penh	D.W	480	2	STAMFORD	524	1	STAMFORD	306	4	factory	Phnom Penh
13	ETERNAL WAY Co. Ltd	Rd. 5, Russey Keo, Phnom Penh	DENYO	400	1	DENYO	280	1			2	unknown	Phnom Penh
14	MING MAN'S SAUNA	St. 214, Don Penh, Phnom Penh	JPN	120	1						1	service	Phnom Penh
15	BOENG MEAS Restaurant	Rd. 6A, Phnom Phenh	DENYO	80	1	DENYO	240	1			2	restaurant	Phnom Penh
16	NEW POINT TEXTILE INDUSTRIES CO., LTD.	Rd. 5, Kilometer 6, Phnom Penh	YANMAR	400	1	SDMO	80	1			2	factory	Phnom Penh
17	KONG HONG 3 (Laundry)	Rd. 5, Kilometer 6, Phnom Penh	CATERPILLAR	500	1	HAIXINE	320	1			2	service	Phnom Penh
18	NATIONAL INSTITUTE OF MANAGEMENT	Blvd. Monivong, Phnom Penh	SDMO	400	1						1	shcool	Phnom Penh
19	INDOBEST COMPANY LIMITED	Blvd. Sihanouk, Phnom Penh	DENYO	200	1						1	unknown	Phnom Penh
20	TAI SENG Hotel	Blvd. Monivong, Phnom Penh	CUMMINS	240	1						1	hotel	Phnom Penh
21	THE QUEEN Restaurant	St. 214, Don Penh, Phnom Penh	SDMO	80	1	SDMO	240	1			2	restaurant	Phnom Penh
22	DIAMOND HOTEL	Blvd. Monivong, Phnom Penh	AIRMAN	230	1	DENYO	280	1			2	hotel	Phnom Penh
23	BANANA CENTER	St. 102, Don Penh, Phnom Penh	SUMPWER	240	1						1	school	Phnom Penh
24	HONG KONG CENTRAL	Blvd. Sothearos, Phnom Penh	CUMMINS	520	1						1	business center	Phnom Penh
25	DREAM WORLD GUEST HOUSE	St. 178, Don Penh, Phnom Penh	DENYO	120	1						1	hotel	Phnom Penh
26	HANG NEAK Restaurant	Rd. 6A, Phnom Phenh	MITSUBISHI	200	1	CUMMINS	240	1			2	restaurant	Phnom Penh
27	BEER GARDEN YARNG CHOV	Rd. 252, Phnom Penh	ISUZU	120	1						1	restaurant	Phnom Penh
28	SENG YONG Garment Factory Co., Ltd	Rd. 5, Russey Keo, Phnom Penh	DENYO	280	3						3	factory	Phnom Penh
29	99 Restaurant	Rd.252, Phnom Penh	GETPOWER	64	1	DENYO	100	1	DENYO	20	3	restaurant	Phnom Penh
30	LE ROYAL Hotel	Rd. 92, Wattphnom, Phnom Penh	CUMMINS	960	2	CUMMINS	800	1			3	hotel	Phnom Penh
31	PENCIL SUPERCENTER	Rd. 212, Phnom Penh	NIPPON	240	1						1	market	Phnom Penh
32	CAMBODIA SPORTSWEAR MFG. LTD	Rd. 2, Phnom Penh	CATERPILLAR	1000	2	CUMMINS	700	1	CUMMINS	500	4	factory	Phnom Penh
33	CHEN TAI Garment Factory	Rd. 2, Phnom Penh	PETBOW	400	1	MITSUBISHI	400	2			3	factory	Phnom Penh
34	COMFORT INN Hotel	Blvd. Mao Tse Tong, Phnom Penh	DENYO	160	1						1	hotel	Phnom Penh
35	HANG FUNG SHING Garment Factory	Rd. 2, Phnom Penh	MITSUBISHI	350	1	MITSUBISHI	150	1			2	factory	Phnom Penh
36	CPG Garment Factory	Rd. 2, Phnom Penh	CATERPILLAR	192	1						1	factory	Phnom Penh
37	LES JANDINS DU BASSAC Hotel	Blvd. Norodom, Phnom Penh	SDG	160	1						1	hotel	Phnom Penh
38	KONG HONG Garment Factory	Blvd. Monivong, Phnom Penh	GENSET	310	2						2	factory	Phnom Penh
39	YGM Garment Factory	Blvd. Russian	CUMMINS	665	2	CUMMINS	312	1			3	factory	Phnom Penh
40	GOLDKAMVIMEX Garment Factory	Blvd. Russian, Phnom Penh	VOLVO	243	2						2	factory	Phnom Penh
41	TINNAN Garment Factory	Toek Thlar, Russey Keo, P. Penh	CATERPILLAR	544	1	CATERPILLAR	264	2			3	factory	Phnom Penh
42	PAPER Factory	Toek Thlar, Russey Keo, P. Penh	CUMMINS	280	1						1	factory	Phnom Penh
43	O.D PAINTS (Cambodia) Co., Ltd.	Blvd. Russian, Russey Keo, P. Penh	GM	400	1						1	factory	Phnom Penh
44	PHNOM PENH WATER PARK	Blvd. Russian, Russey Keo, P. Penh	CHINA	240	1						1	service	Phnom Penh
45	HOHING Garment Factory	Toek Thlar, Russey Keo, P. Penh	DENYO	176	1						1	factory	Phnom Penh
46	ROYAL PHNOM PENH Hotel	Blvd. Sothearos, Phnom Penh	CATERPILLAR	800	2						2	hotel	Phnom Penh
47	GOLDTEX Garment Factory	Rd. 2, Phnom Penh	DENYO	200	1	DENYO	100	1			2	factory	Phnom Penh
48	SUPREME CHOICE Garment Factory	Rd. 2, Phnom Penh	BRAGEN	640	2	BRAGEN	320	1			3	factory	Phnom Penh
49	SIAM CEMENT Company	Rd. 2, Phnom Penh	CUMMINS	240	1	CUMMINS	88	1			2	factory	Phnom Penh
50	KINGSLAND GARMENT Factory	Rd. 2, Phnom Penh	MITSUBISHI	176	2						2	factory	Phnom Penh

51	NORTH GAIETY APPAREL Co., LTD.	Rd. 2, Phnom Penh	VOLVO	200	2	VOLVO	38	1				3	factory	Phnom Penh
52	TOP WORLD Garment Factory	Rd. 2, Phnom Penh	GRAY	280	2	GRAY	160	1				3	factory	Phnom Penh
53	SAN LEI FUNG Garment Factory	Rd. 2, Phnom Penh	CUMMINS	400	1							1	factory	Phnom Penh
54	THREE FLOOR Garment Factory	Rd. 2, Phnom Penh	CUMMINS	640	1	CUMMINS	200	1				2	factory	Phnom Penh
55	TAI MENG Hotel	Blvd. Norodom, Phnom Penh	GENTECIA	500	2	DENYO	150	1				3	hotel	Phnom Penh
56	KIN TAI Garment Factory	Rd. 2, Phnom Penh	COMMAND	450	2							2	factory	Phnom Penh
57	BUMIN Garment Factory	Rd. 2, Phnom Penh	AIRMAN	280	1	J P N	72	1				2	factory	Phnom Penh
58	HOLITI Garment Factory	Rd. 2, Phnom Penh	HIMOINSA	392	3							3	factory	Phnom Penh
59	LINDA Garment Factory	Rd. 2, Phnom Penh	WILSON	176	2	WILSON	52	1				3	factory	Phnom Penh
60	FUNG VAN Garment Factory	Rd. 2, Phnom Penh	MICS	240	1							1	factory	Phnom Penh
61	SUPREME GARMENTS PTE., LTD	Rd. 2, Phnom Penh	PERKINS	320	2	DENYO	48	1				3	factory	Phnom Penh
62	ICE-CREAM Factory	Rd. 2, Phnom Penh	HIMOINSA	360	1	MICS	288	1				2	factory	Phnom Penh
63	KINGSLAND GARMENT(Cambodia)LTD	Rd. 2, Phnom Penh	DENYO	120	1							1	factory	Phnom Penh
64	USA FULLY FIELD GARMENTS	Rd. 2, Phnom Penh	CANOPAC	280	1	MICS	52	1				2	factory	Phnom Penh
65	CHUNG FAI KNITWEAR PTY., LTD	Rd. 2, Phnom Penh	CHINA	240	2							2	factory	Phnom Penh
66	YONG MEN Garment Factory	Rd. 2, Phnom Penh	COMMAND	360	2	DENYO	120	1				3	factory	Phnom Penh
67	SINLANHOR Garment Factory	Rd. 271, Phnom Penh	AMMETER	420	1	CETEC	240	1	MICS	80	1	3	factory	Phnom Penh
68	REGEL Hotel & ARONA Supermarket	Blvd. Mao Tse Tong, Phnom Penh	J P N	176	1	J P N	120	1				2	hotel	Phnom Penh
69	MONOROM MASSAGE	Rd. 118, Phnom Penh	GENTECH	96	1	IVECO	400	1				2	service	Phnom Penh
70	EMPEROR Hotel and Restaurant	Rd. 231, Phnom Penh	CUMMINS	320	2							2	hotel	Phnom Penh
71	CHUNG HSIN Hotel	St. 115, Phnom Penh	DENYO	280	1							1	hotel	Phnom Penh
72	LE PRESIDENT Hotel	Blvd. Kamuchea Krom, Phnom Penh	SDMO	160	1							1	hotel	Phnom Penh
73	CHAI HOUR II Hotel	Rd. 115, Phnom Penh	J P N	160	1	J P N	120	1				2	hotel	Phnom Penh
74	CITY VILLA Hotel	Khan Chamkar Mon, Phnom Penh	CUMMINS	200	2							2	hotel	Phnom Penh
75	CHAMP ELYSE Hotel	Rd. 63, Phnom Penh	SDMO	240	1							1	hotel	Phnom Penh
76	EMBASSY PLACE	Blvd. Norodom, Phnom Penh	DENYO	200	1							1	hotel	Phnom Penh
77	GOLDIANA Hotel	Rd. 282, Phnom Penh	J P N	304	1							1	hotel	Phnom Penh
78	X.O. Restaurant	Rd. 163, Phnom Penh	HINO	176	1							1	restaurant	Phnom Penh
79	PARKWAY CENTER	Blvd. Mao Tse Tong, Phnom Penh	CUMMINS	400	2	CUMMINS	515	1				3	market	Phnom Penh
80	BOPHAR TEP II Restaurant	Blvd. Mao Tse Tong, Phnom Penh	DENYO	160	1							1	restaurant	Phnom Penh
81	LUCKY Supermarket	Blvd. Sihanouk, Phnom Penh	VOLVO	360	1							1	market	Phnom Penh
82	YOU NAM Supermarket	Blvd. Kamuchea Krom, Phnom Penh	TROPIC	250	1	CHINA	350	1	HENIX, DENYO	150,90	2	4	market	Phnom Penh
83	M & A CAMBODIA GARMENTS LTD.	Rd. 230, Phnom Penh	J P N	120	2							2	factory	Phnom Penh
84	BOREI THMEI Hotel	Blvd. Charles De Gaulle, P. Penh	HINO	120	1	MITSUBISHI	56	1				2	hotel	Phnom Penh
85	VIMEAN SUOR Hotel	Blvd. Charles De Gaulle, P. Penh	SDMO	400	1	SDMO	280	1				2	hotel	Phnom Penh
86	PARIS Hotel	Blvd. Kamuchea Krom, Phnom Penh	J P N	160	1	J P N	280	1				2	hotel	Phnom Penh
87	NAN JING II Hotel	Blvd. Czechoslovakia, Phnom Penh	GENTECH	304	2							2	hotel	Phnom Penh
88	LI LAY Hotel and Restaurant	Blvd. Kamuchea Krom, Phnom Penh	CUMMINS	280	1	VOLVO	280	1				2	hotel	Phnom Penh
89	LA PARRANDA Hotel	Blvd. Mao Tse Tong, Phnom Penh	CUMMINS	360	1							1	hotel	Phnom Penh
90	KIM SOON LAY Hotel and Restaurant	Rd. 109, Phnom Penh	SDMO	240	2							2	hotel	Phnom Penh
91	JULIANA Hotel	Rd. 152, Phnom Penh	PERKINS	280	3	CATERPILLAR	400	1				4	hotel	Phnom Penh
92	SAPHIR Hotel	Rd. 182, Phnom Penh	GENTECH	80	1	IVECO	100	1				2	hotel	Phnom Penh
93	MEAN HAUR Hotel	Rd. 221, Phnom Penh	DENYO	100	2							2	hotel	Phnom Penh
94	TOKYO Hotel	Rd. 278, Phnom Penh	HINO	100	1							1	hotel	Phnom Penh
95	WORLD MASSAGE	Rd. 139, Phnom Penh	DENYO	240	1							1	service	Phnom Penh
96	MEKONG Hotel	Blvd. Czechoslovakia, Phnom Penh	ISUZU	240	1	MITSUBISHI	80	4	DENYO	72	2	7	hotel	Phnom Penh
97	French Cultural Center	218, St. 184, Phnom Penh	SDMO	100	1	SDMO	80	1				2	school	Phnom Penh
98	PHKAR CHHOUK TEP Hotel and Restrnt.	Rd. 336, Phnom Penh	GRAS SOVIET	100	6							6	hotel	Phnom Penh
99	WORLD FOOD PROGRAMME	250, St. 63, Phnom Penh	SDMO	100	1							1	service	Phnom Penh
100	EASTERN STEEL INDUSTRY CORP.	Rd. 2, Phnom Penh	MITSUBISHI	200	3							3	factory	Phnom Penh
101	SOKOA-Society of Khmer Oxygen and Acetylene	Rd. 5, Phnom Penh	JAPAN	210	1	CHINA	190	1				2	factory	Phnom Penh
102	CAMBODIA PHARMACEUTICAL ENTERPRISE	Blvd. Russian, Phnom Penh	DENYO	280	1							1	factory	Phnom Penh
103	BRITISH AMERICAN TOBACCO (BAT)	Rd. 2, Phnom Penh	CUMMINS	650	1	CUMMINS	600	1				2	factory	Phnom Penh
104	NESTLE DAIRY (Cambodia) Ltd.	Rd. 5, Phnom Penh	CUMMINS	400	1	DENYO	100	1				2	factory	Phnom Penh
105	MODERN PLASTIC AND PACKAGING CO. (MPP)	Rd. 2, Phnom Penh	CATERPILLAR	800	1	CATERPILLAR	440	1	STAMFORD	640	2	4	factory	Phnom Penh

106	INTER-CONTINENTAL Hotel	Blvd. Mao Tse Tong, Phnom Penh	CUMMINS	800	6							6	hotel	Phnom Penh
107	CAMBODIA BEVERAGE COMPANY LTD	Rd. 5, Phnom Penh	CUMMINS	250	1	CUMMINS	200	1	KOCKNER	410	2	4	factory	Phnom Penh
108	Shopping Center Sorya	Rd. Trasok Paem, Phnom Penh	CUMMINS	800	1	SDMO	800	1				2	market	Phnom Penh
109	Canadia Industrial Park	Rd. Veng Sreng, Phnom Penh	CHINA	400	6							6	factory	Phnom Penh
110	Amata Tobacco Co., Ltd.	Rd. Veng Sreng, Phnom Penh	CUMMINS	750	2							2	factory	Phnom Penh
111	Canacity Worker Accommodation and Market	Rd. Veng Sreng, Phnom Penh	GENTECH	400	1	DENYO	20	1				2	service	Phnom Penh
112	CAMBODIAN MINE ACTION CENTER	Rd. 528, Phnom Penh	GETPOWER	200	1	DENYO	80	2				3	service	Phnom Penh
113	KANTHA BOPHA 1 HOSPITAL	St. 61, Phnom Penh	SANYO	320	2							2	hospital	Phnom Penh
114	KANTHA BOPHA 2 HOSPITAL	St. 240, Phnom Penh	SANYO	200	2							2	hospital	Phnom Penh
115	CALMETTE HOSPITAL	Blvd. Monivong, Phnom Penh	CUMMINS	320	1	CUMMINS	400	1				2	hospital	Phnom Penh
116	MICASA HOTEL	St. Sisowath, Phnom Penh	CATERPILLAR	800	2							2	hotel	Phnom Penh
117	SUNWAY HOTEL	St. 92, Phnom Penh	CUMMINS	1000	2							2	hotel	Phnom Penh
118	SUN WAH FISHERIES CO., LTD.	Sangkat 3, Mitapheap, Sihanoukville	CUMMINS	280	1	CUMMINS	180	2	CUMMINS	32	1	4	factory	Sihanoukville
119	PEAK HOTEL & CASINO	Sangkat 3, Mitapheap, Sihanoukville	J P N	176	1	CUMMINS	508	1				2	hotel	Sihanoukville
120	HOLIDAY PALACE CASINO-HOTEL	Sangkat 4, Mitapheap, Sihanoukville	CUMMINS	249	1	YAMAHA	400	1				2	hotel	Sihanoukville
121	NEW STAR SHOES CO., LTD	Sangkat 1, Mitapheap, Sihanoukville	CUMMINS	508	2	CUMMINS	280	1				3	factory	Sihanoukville
122	LINS TEXTILE Factory	Sangkat 1, Mitapheap, Sihanoukville	CUMMINS	280	2							2	factory	Sihanoukville
123	Prasat Meas Hotel	Sangkat 4, Mitapheap, Sihanoukville	DENYO	176	1							1	hotel	Sihanoukville
124	GOLDEN SEA HOTEL	Sangkat 4, Mitapheap, Sihanoukville	DENYO	120	1	DENYO	48	1				2	hotel	Sihanoukville
125	RAYAN Garment Factory	Sangkat 1, Mitapheap, Sihanoukville	GERMANY	354	2							2	factory	Sihanoukville
126	YOU THY NINE THY Textile Factory	Sangkat 4, Mitapheap, Sihanoukville	CUMMINS	444	1	CUMMINS	200	1	DENYO	64	1	3	factory	Sihanoukville
127	VIMEAN TORMEAS Hotel and Restaurant	Sangkat 4, Mitapheap, Sihanoukville	DENYO	120	1							1	hotel	Sihanoukville
128	SEASIDE HOTEL	Sangkat 4, Mitapheap, Sihanoukville	DENYO	200	2							2	hotel	Sihanoukville
129	CHHNE CHOLSA Hotel	Sangkat 4, Mitapheap, Sihanoukville	DENYO, XENIX	120	2	DENYO	48	1				3	hotel	Sihanoukville
130	LOURN HENG HOTEL	Sangkat 4, Mitapheap, Sihanoukville	XENIX	144	1							1	hotel	Sihanoukville
131	ANGKOR BEER Factory	Sangkat 1, Mitapheap, Sihanoukville	MITSUBISHI	520	3							3	factory	Sihanoukville
132	DONG DA SHOES (CAMBODIA) CO., LTD	Sangkat 1, Mitapheap, Sihanoukville	TAIWAN	280	2							2	factory	Sihanoukville
133	KHMER INTERNATIONAL GARMENT CO., LTD	Sangkat 1, Mitapheap, Sihanoukville	CUMMINS	120	2	DENYO	48	1				3	factory	Sihanoukville
134	HAWAII HOTEL	Sangkat 2, Mitapheap, Sihanoukville	J P N	120	1							1	hotel	Sihanoukville
135	NEW PARIS HOTEL	Sangkat 2, Mitapheap, Sihanoukville	DENYO	120	1							1	hotel	Sihanoukville
136	MOHA SAL	Sangkat 2, Mitapheap, Sihanoukville	DENYO	100	1							1	hotel	Sihanoukville
137	BLUE STORM Restaurant	Sangkat 2, Mitapheap, Sihanoukville	DENYO	100	1							1	restaurant	Sihanoukville
138	TEO HOTEL	Battambang	J P N	225	1	DENYO	120	1				2	hotel	Battambang
139	CHHAYA HOTEL	Battambang	NISSAN	120	1	ISUZU	120	1				2	hotel	Battambang
140	HANG MEAS HOTEL	Pailin	J P N	200	1	J P N	175	1	DENYO	120	1	3	hotel	Pailin
141	PHNOM PROH HOTEL	Kampong Cham	AIRMAN	150	1	CHINA	75	1	DENYO	40	1	3	hotel	Kampong Cham
142	MEKONG Hotel	Kampong Cham	CHINA	100	1							1	hotel	Kampong Cham
143	MANHATTAN TEXTILE AND GARMENT	Kampong Cham	CHINA	560	1	CHINA	560	1	CHINA	1120	2	4	factory	Kampong Cham
144	BRITISH AMERICAN TOBACCO (BAT)	Kampong Cham	MITSUBISHI	200	1	DENYO	55	1				2	factory	Kampong Cham
145	SIEM REAP ANGKOR INTERNATIONAL AIRPORT	Siem Reap	ONAN	700	1	ONAN	700	1	PETBOW	500	2	4	service	Siem Reap
146	PAUL DUBULE (Tourism and Hotel Training)	Siem Reap	DENYO	120	1							1	hotel	Siem Reap
147	ANGKOR REACH Hotel	Siem Reap	MITSUBISHI	247	1	MITSUBISHI	80	1	CKD PRAHA	80	1	3	hotel	Siem Reap
148	NOKOR PHNOM Hotel	Siem Reap	MITSUBISHI	880	2	CUMMINS, CHINA	280	2	NSDK, DENYO	616	1	7	hotel	Siem Reap
149	PRINCESS ANGKOR Hotel	National Road 6, Svay Dangkum, Siem Reap	DENYO	176	1	CHINA	320	1				2	hotel	Siem Reap
150	CITY ANGKOR Hotel	National Road 6, Svay Dangkum, Siem Reap	HIGHLANDER	800	1	HIGHLANDER	533	1	HIGHLANDER	560	2	4	hotel	Siem Reap
151	BANTEAYSREY Hotel	National Road 6, Svay Dangkum, Siem Reap	DENYO	136	1	DENYO	120	1	DENYO	28	1	3	hotel	Siem Reap
152	CITY ROYAL Hotel	National Road 6, Svay Dangkum, Siem Reap	ONAN	250	1	ONAN	250	1	PETBOW	160	1	3	hotel	Siem Reap
153	PRUM BAYON Hotel	National Road 6, Svay Dangkum, Siem Reap	HINO	176	1	DENYO	100	1				2	hotel	Siem Reap
154	CAMBODIAN COMMERCIAL BANK LIMITED	Sisowath, Svay Dangkum, Siem Reap	DENYO	176	1	JOHNDEERE	176	1				2	service	Siem Reap
155	MITTAPHEAP Hotel	Sisowath, Svay Dangkum, Siem Reap	HINO	44	1	DENYO	67	1	NISSAN	160	2	4	hotel	Siem Reap
156	MASSAGE SOKSAN	Mondol 2, Svay Dangkum, Siem Reap	DENYO	48	1	DENYO	120	1	DENYO	120	1	3	hotel	Siem Reap
157	TA PROHM Hotel	Mondol 2, Svay Dangkum, Siem Reap	NES	100	1	NIPPON SARYO	416	1	DENYO	264	1	3	hotel	Siem Reap
158	ANGKOR VILLA Hotel	Salakamraek Commune, Siem Reap	CUMMINS	148	1	PERKINS	48	1				2	hotel	Siem Reap
159	BAYON Hotel	Salakamraek Commune, Siem Reap	SKL	200	1	JPN	48	1				2	hotel	Siem Reap
160	PANSEA ANGKOR Hotel	Salakamraek Commune, Siem Reap	SDMO	360	1	SDMO	360	1				2	hotel	Siem Reap

161	DIAMOND Hotel	Salakamraek Commune, Siem Reap	DENYO	120	1	HINO	72	1				2	hotel	Siem Reap
162	KOHLER Hotel	Salakamraek Commune, Siem Reap	DENYO	120	1							1	hotel	Siem Reap
163	FREEDOM Hotel	National Road 6, Svay Dangkm, Siem Reap	DENYO	240	2	DENYO	240	2	PERKINS	80	1	4	hotel	Siem Reap
164	SOFETEL ROYAL ANGKOR Hotel	Chiries Gauile, Svay Dangkm, Siem Reap	PRINTRATING	1000	1	PRINTRATING	800	1	PRINTRATING	600	1	3	hotel	Siem Reap
165	GRAND Hotel	Chiries Gauile, Svay Dangkm, Siem Reap	PERKIN	1200	1	PERKIN	1200	1				2	hotel	Siem Reap
166	NEAKPEAN Hotel	Sisowath, Svay Dangkm, Siem Reap	DENYO	120	1	ONAN	310	1	DENYO	48	1	3	hotel	Siem Reap
167	ANGKOR CENTURY Hotel	Komay Road, Svay Dangkm, Siem Reap	KOHLR	720	1	KOHLR	600	1	KOHLR	360	1	3	hotel	Siem Reap
168	APSARA ANGKOR Hotel	National Road 6, Svay Dangkm, Siem Reap	HIGHLANDER	560	1	HIGHLANDER	740	2	DENYO	176	1	4	hotel	Siem Reap
169	ANGKOR Hotel	National Road 6, Svay Dangkm, Siem Reap	CATERPILLAR	400	1	PETBOW	273	1	PETBOW	273	1	3	hotel	Siem Reap
170	SALINA Hotel	Phum Tatal, Svay Dangkm, Siem Reap	TRIPIC	680	2	SDMO	120	1	FG WILSON	280	1	4	hotel	Siem Reap
171	JAVARAMAN 7 Children Hospital	Kok Jork Commune, Siem Reap	SDMO	200	6							6	hospital	Siem Reap

## **8-2 - PHNOM PENH**

**TOTAL POWER: 78160KW**



N° 1

Date :

Dec-02

Name ឈ្មោះ :

**NEW POINT Garment Factory**

Location អាសយដ្ឋាន :

Road N° 5 , RusseyKeo, Phnom Penh.

N°	Description	Unit 1	Unit 2	Unit 3	Unit 4	Total
1	Make & Type of Generators ម៉ាក និង ប្រភេទ ម៉ាស៊ីនភ្លើង	mitsubishi SILENT	MITSUBISHI SILENT			2
2	Installed Capacity in kW កម្លាំងម៉ាស៊ីនភ្លើងដែលបានតំលើង kW	280	400			680
3	Output Capacity in kW សមត្ថភាពដែលម៉ាស៊ីនអាចផ្គត់ផ្គង់បាន kW	224	320			544
4	Energy Generated kWh/year ថាមពលដែលម៉ាស៊ីនអាចផលិតបានក្នុង១ឆ្នាំ kWh	978432	1397760			2376192
5	Energy Sent Out/Billed kWh/year ថាមពលបានប្រើ ឬ លក់ kWh/year	782746	1118208			1900954
6	Type of Fuel ប្រភេទប្រេងឥន្ធនៈ	Diesel	Diesel			Diesel
7	Fuel Consumption Litre/year ប្រេងឥន្ធនៈប្រើក្នុង១ឆ្នាំ	156549	209664			366213
8	Fuel Consumption Litre/kWh ប្រេងឥន្ធនៈប្រើក្នុង 1kWh	0.16	0.15			
9	No. of hours of Operation Hr/yr ចំនួនម៉ោងប្រើក្នុង១ឆ្នាំ Hr/yr	4368	4368			8736
10	No. of hours of Repair Hr/yr ចំនួនម៉ោងជួសជុលក្នុង១ឆ្នាំ Hr/yr	262	306			568
11	No. of hours of Standby Hr/yr ចំនួនម៉ោងរង់ចាំជំនួស Hr/yr	4130	4086			8216



N° 2

Date :

Dec-02

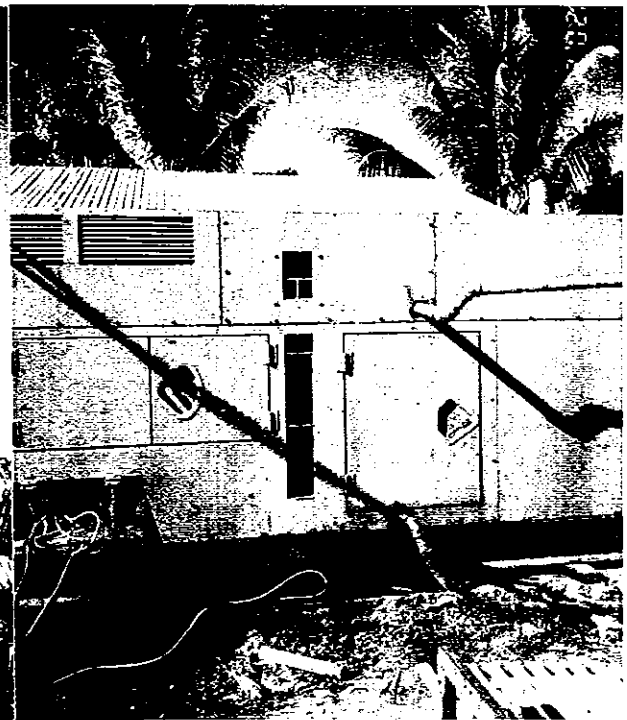
Name ឈ្មោះ :

**CHAI HONG Hotel**

Location អាសយដ្ឋាន :

Road N° 6A, Phnom Penh.

N°	Description	Unit 1	Unit 2	Unit 3	Unit 4	Total
1	Make & Type of Generators ម៉ាក និង ប្រភេទ ម៉ាស៊ីនភ្លើង	NIPPON OPEN	ISUZU SILENT			2
2	Installed Capacity in kW កម្លាំងម៉ាស៊ីនភ្លើងដែលបានតំលើង kW	160	250			410
3	Output Capacity in kW សមត្ថភាពដែលម៉ាស៊ីនអាចផ្តិតផ្តង់បាន kW	128	200			328
4	Energy Generated kWh/year ថាមពលដែលម៉ាស៊ីនអាចផលិតបានក្នុង១ឆ្នាំ kWh	233600	365000			598600
5	Energy Sent Out/Billed kWh/year ថាមពលបានប្រើ ឬ លក់ kWh/year	163520	255500			419020
6	Type of Fuel ប្រភេទប្រេងឥន្ធនៈ	Diesel	Diesel			Diesel
7	Fuel Consumption Litre/year ប្រេងឥន្ធនៈប្រើក្នុង១ឆ្នាំ	46720	65700			112420
8	Fuel Consumption Litre/kWh ប្រេងឥន្ធនៈប្រើក្នុង 1kWh	0.20	0.18			
9	No. of hours of Operation Hr/yr ចំនួនម៉ោងប្រើក្នុង១ឆ្នាំ Hr/yr	1825	1825			3650
10	No. of hours of Repair Hr/yr ចំនួនម៉ោងជួសជុលក្នុង១ឆ្នាំ Hr/yr	128	128			256
11	No. of hours of Standby Hr/yr ចំនួនម៉ោងរង់ចាំជំនួស Hr/yr	6807	6807			13614





N° 3

Date :

Dec-02

Name ឈ្មោះ :

Big A Supermarket

Location អាសយដ្ឋាន :

Road 178 , Don Penh, Phnom Penh.

N°	Description	Unit 1	Unit 2	Unit 3	Unit 4	Total
1	Make & Type of Generators ម៉ាក និង ប្រភេទ ម៉ាស៊ីនភ្លើង	DENYO SILENT				1
2	Installed Capacity in kW កម្លាំងម៉ាស៊ីនភ្លើងដែលបានតំលើង kW	320				320
3	Output Capacity in kW សមត្ថភាពដែលម៉ាស៊ីនអាចផ្តល់បាន kW	256				256
4	Energy Generated kWh/year ថាមពលដែលម៉ាស៊ីនអាចផលិតបានក្នុង១ឆ្នាំ kWh	654080				654080
5	Energy Sent Out/Billed kWh/year ថាមពលបានប្រើ ឬ លក់ kWh/year	523264				523264
6	Type of Fuel ប្រភេទប្រេងឥន្ធនៈ	Diesel				Diesel
7	Fuel Consumption Litre/year ប្រេងឥន្ធនៈប្រើក្នុង១ឆ្នាំ	98112				98112
8	Fuel Consumption Litre/kWh ប្រេងឥន្ធនៈប្រើក្នុង 1kWh	0.15				
9	No. of hours of Operation Hr/yr ចំនួនម៉ោងប្រើក្នុង១ឆ្នាំ Hr/yr	2555				2555
10	No. of hours of Repair Hr/yr ចំនួនម៉ោងជួសជុលក្នុង១ឆ្នាំ Hr/yr	179				179
11	No. of hours of Standby Hr/yr ចំនួនម៉ោងរង់ចាំជំនួស Hr/yr	6026				6026



N° 4

Date :

Dec-02

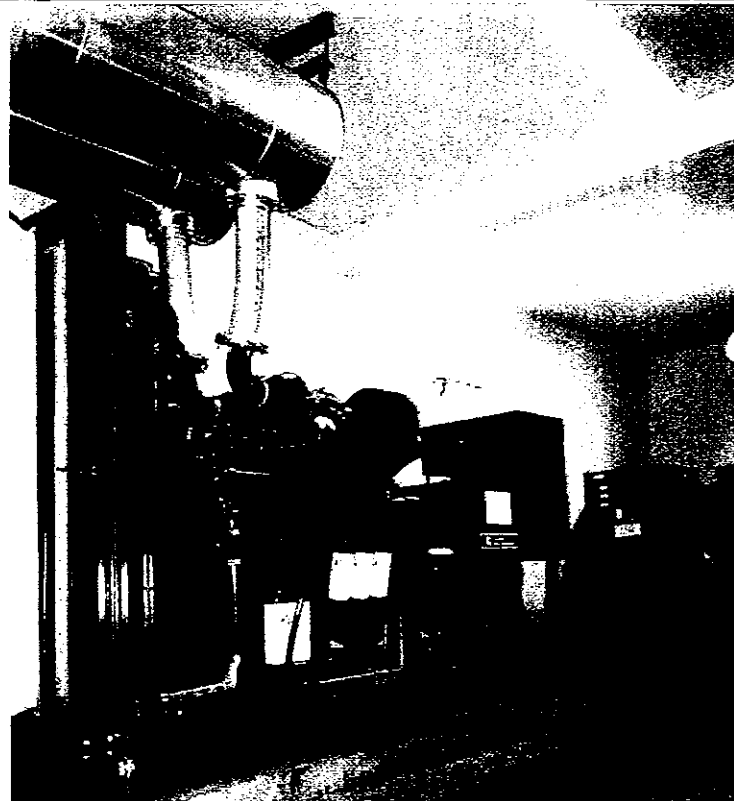
Name ឈ្មោះ :

**VI TAY Garment Factory**

Location អាសយដ្ឋាន :

Road N° 5 , RusseyKeo, Phnom Penh.

N°	Description	Unit 1	Unit 2	Unit 3	Unit 4	Total
1	Make & Type of Generators ម៉ាក និង ប្រភេទ ម៉ាស៊ីនភ្លើង	CUMMINS OPEN	CUMMINS OPEN	CUMMINS OPEN		3
2	Installed Capacity in kW កម្លាំងម៉ាស៊ីនភ្លើងដែលបានតំលើង kW	585	315	315		1215
3	Output Capacity in kW សមត្ថភាពដែលម៉ាស៊ីនអាចផ្តល់បាន kW	530	280	280		1090
4	Energy Generated kWh/year ថាមពលដែលម៉ាស៊ីនអាចផលិតបានក្នុង១ឆ្នាំ kWh	1060000	560000	560000		2180000
5	Energy Sent Out/Billed kWh/year ថាមពលបានប្រើ ឬ លក់ kWh/year	848000	448000	448000		1744000
6	Type of Fuel ប្រភេទប្រេងឥន្ធនៈ	Diesel	Diesel	Diesel		Diesel
7	Fuel Consumption Litre/year ប្រេងឥន្ធនៈប្រើក្នុង១ឆ្នាំ	127200	84000	84000		295200
8	Fuel Consumption Litre/kWh ប្រេងឥន្ធនៈប្រើក្នុង 1kWh	0.12	0.15	0.15		
9	No. of hours of Operation Hr/yr ចំនួនម៉ោងប្រើក្នុង១ឆ្នាំ Hr/yr	2000	2000	2000		6000
10	No. of hours of Repair Hr/yr ចំនួនម៉ោងជួសជុលក្នុង១ឆ្នាំ Hr/yr	140	140	140		420
11	No. of hours of Standby Hr/yr ចំនួនម៉ោងរង់ចាំជំនួស Hr/yr	6620	6620	6620		19860



N° 5

Date :

Dec-02

Name ឈ្មោះ :

MITTAPHEAP Hotel

Location អាសយដ្ឋាន :

Road 174, Don Penh, Phnom Penh.

N°	Description	Unit 1	Unit 2	Unit 3	Unit 4	Total
1	Make & Type of Generators ម៉ាក និង ប្រភេទ ម៉ាស៊ីនភ្លើង	DENYO SILENT	DENYO SILENT			2
2	Installed Capacity in kW កម្លាំងម៉ាស៊ីនភ្លើងដែលបានតំលើង kW	320	240			560
3	Output Capacity in kW សមត្ថភាពដែលម៉ាស៊ីនអាចផ្តល់បាន kW	270	215			485
4	Energy Generated kWh/year ថាមពលដែលម៉ាស៊ីនអាចផលិតបានក្នុង១ឆ្នាំ kWh	781920	15480			797400
5	Energy Sent Out/Billed kWh/year ថាមពលបានប្រើ ឬ លក់ kWh/year	625536	12384			637920
6	Type of Fuel ប្រភេទប្រេងឥន្ធនៈ	Diesel	Diesel			Diesel
7	Fuel Consumption Litre/year ប្រេងឥន្ធនៈប្រើក្នុង១ឆ្នាំ	117288	2786			120074
8	Fuel Consumption Litre/kWh ប្រេងឥន្ធនៈប្រើក្នុង 1kWh	0.15	0.18			
9	No. of hours of Operation Hr/yr ចំនួនម៉ោងប្រើក្នុង១ឆ្នាំ Hr/yr	2896	72			2968
10	No. of hours of Repair Hr/yr ចំនួនម៉ោងជួសជុលក្នុង១ឆ្នាំ Hr/yr	203	4			207
11	No. of hours of Standby Hr/yr ចំនួនម៉ោងរង់ចាំជំនួស Hr/yr	5678	8502			14180



N° 6

Date :

Dec-02

Name ឈ្មោះ :

**ORCHIDEE Hotel**

Location អាសយដ្ឋាន :

Road 174, Don Penh, Phnom Penh.

N°	Description	Unit 1	Unit 2	Unit 3	Unit 4	Total
1	Make & Type of Generators ម៉ាក និង ប្រភេទ ម៉ាស៊ីនភ្លើង	DENYO SILENT	DENYO SILENT			2
2	Installed Capacity in kW កម្លាំងម៉ាស៊ីនភ្លើងដែលបានតំលើង kW	320	320			640
3	Output Capacity in kW សមត្ថភាពដែលម៉ាស៊ីនអាចផ្តល់បាន kW	260	260			520
4	Energy Generated kWh/year ថាមពលដែលម៉ាស៊ីនអាចផលិតបានក្នុង១ឆ្នាំ kWh	759200	0			759200
5	Energy Sent Out/Billed kWh/year ថាមពលបានប្រើ ឬ លក់ kWh/year	531440	0			531440
6	Type of Fuel ប្រភេទប្រេងឥន្ធនៈ	Diesel	Diesel			Diesel
7	Fuel Consumption Litre/year ប្រេងឥន្ធនៈប្រើក្នុង១ឆ្នាំ	106288	0			106288
8	Fuel Consumption Litre/kWh ប្រេងឥន្ធនៈប្រើក្នុង 1kWh	0.14	0.14			
9	No. of hours of Operation Hr/yr ចំនួនម៉ោងប្រើក្នុង១ឆ្នាំ Hr/yr	2920	0			2920
10	No. of hours of Repair Hr/yr ចំនួនម៉ោងជួសជុលក្នុង១ឆ្នាំ Hr/yr	204	0			292
11	No. of hours of Standby Hr/yr ចំនួនម៉ោងរង់ចាំជំនួស Hr/yr	5636	Standby			5548



N° 7

Date :

Dec-02

Name ឈ្មោះ :

**K & A Garment Factory**

Location អាសយដ្ឋាន :

Road N° 5, Phnom Penh.

N°	Description	Unit 1	Unit 2	Unit 3	Unit 4	Total
1	Make & Type of Generators ម៉ាក និង ប្រភេទ ម៉ាស៊ីនភ្លើង	DENYO SILENT	DENYO SILENT	DENYO SILENT		3
2	Installed Capacity in kW កម្លាំងម៉ាស៊ីនភ្លើងដែលបានតំលើង kW	240	320	48		608
3	Output Capacity in kW សមត្ថភាពដែលម៉ាស៊ីនអាចផ្គត់ផ្គង់បាន kW	180	250	38		468
4	Energy Generated kWh/year ថាមពលដែលម៉ាស៊ីនអាចផលិតបានក្នុង១ឆ្នាំ kWh	336960	19500	2964		359424
5	Energy Sent Out/Billed kWh/year ថាមពលបានប្រើ ឬ លក់ kWh/year	269568	15600	2075		287243
6	Type of Fuel ប្រភេទប្រេងឥន្ធនៈ	Diesel	Diesel	Diesel		Diesel
7	Fuel Consumption Litre/year ប្រេងឥន្ធនៈប្រើក្នុង១ឆ្នាំ	53914	2730	711		57355
8	Fuel Consumption Litre/kWh ប្រេងឥន្ធនៈប្រើក្នុង 1kWh	0.16	0.14	0.24		
9	No. of hours of Operation Hr/yr ចំនួនម៉ោងប្រើក្នុង១ឆ្នាំ Hr/yr	1872	78	78		2028
10	No. of hours of Repair Hr/yr ចំនួនម៉ោងជួសជុលក្នុង១ឆ្នាំ Hr/yr	112	5	4		121
11	No. of hours of Standby Hr/yr ចំនួនម៉ោងរង់ចាំជំនួស Hr/yr	6776	8677	8678		24131



N° 8

Date :

Dec-02

Name ឈ្មោះ :

RIVERSIDE Hotel

Location អាសយដ្ឋាន :

Sisowath Blvd, Phnom Penh.

N°	Description	Unit 1	Unit 2	Unit 3	Unit 4	Total
1	Make & Type of Generators ម៉ាក និង ប្រភេទ ម៉ាស៊ីនភ្លើង	MITSUBISHI SILENT	DENYO SILENT	DENYO SILENT		3
2	Installed Capacity in kW កម្លាំងម៉ាស៊ីនភ្លើងដែលបានតំលើង kW	200	104	200		504
3	Output Capacity in kW សមត្ថភាពដែលម៉ាស៊ីនអាចផ្គត់ផ្គង់បាន kW	160	85	160		405
4	Energy Generated kWh/year ថាមពលដែលម៉ាស៊ីនអាចផលិតបានក្នុង១ឆ្នាំ kWh	700800	372300	0		1073100
5	Energy Sent Out/Billed kWh/year ថាមពលបានប្រើ ឬ លក់ kWh/year	490560	223380	0		713940
6	Type of Fuel ប្រភេទប្រេងឥន្ធនៈ	Diesel	Diesel	Diesel		Diesel
7	Fuel Consumption Litre/year ប្រេងឥន្ធនៈប្រើក្នុង១ឆ្នាំ	119136	74460	0		193596
8	Fuel Consumption Litre/kWh ប្រេងឥន្ធនៈប្រើក្នុង 1kWh	0.17	0.2	0.17		
9	No. of hours of Operation Hr/yr ចំនួនម៉ោងប្រើក្នុង១ឆ្នាំ Hr/yr	4380	4380	0		8760
10	No. of hours of Repair Hr/yr ចំនួនម៉ោងជួសជុលក្នុង១ឆ្នាំ Hr/yr	307	263	0		570
11	No. of hours of Standby Hr/yr ចំនួនម៉ោងរង់ចាំជំនួស Hr/yr	4073	4117	standby		8190



N° 9

Date :

Dec-02

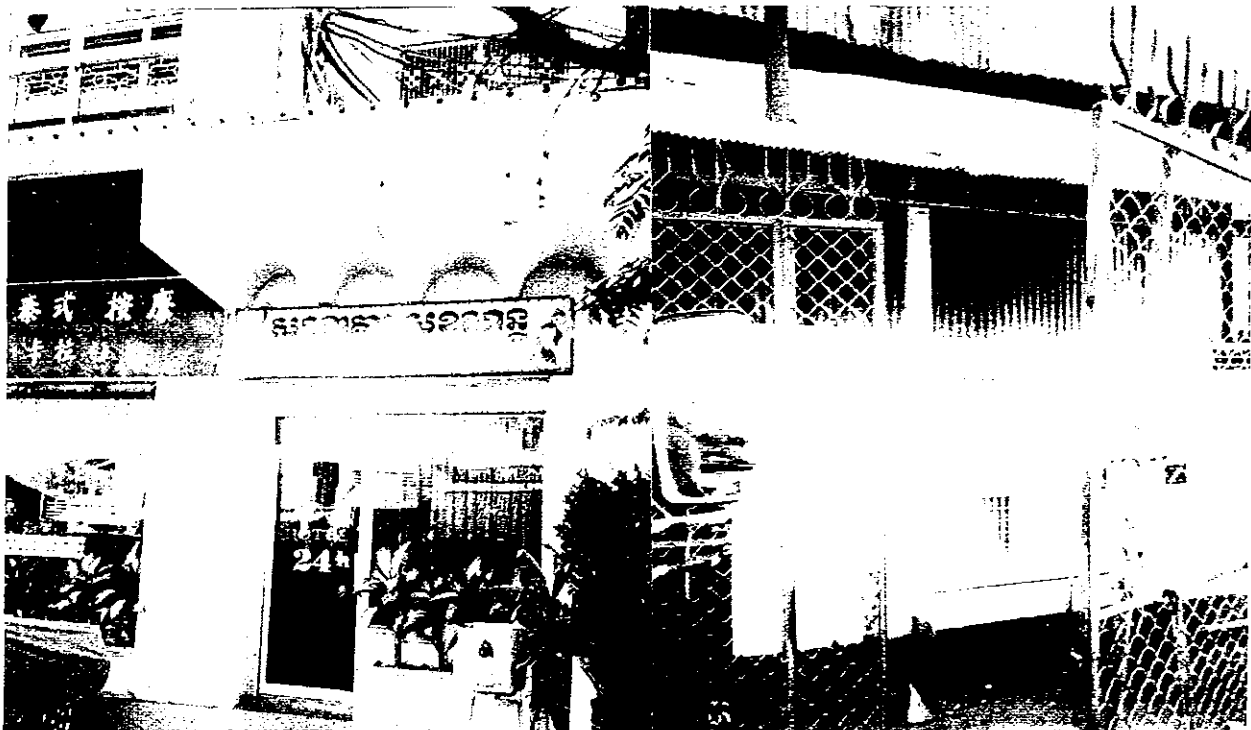
Name ឈ្មោះ :

**SOK SAN Hotel**

Location អាសយដ្ឋាន :

Road N° 5, Phnom Penh.

N°	Description	Unit 1	Unit 2	Unit 3	Unit 4	Total
1	Make & Type of Generators ម៉ាក និង ប្រភេទ ម៉ាស៊ីនភ្លើង	MITSUBISHI SILENT	MITSUBISHI SILENT			2
2	Installed Capacity in kW កម្លាំងម៉ាស៊ីនភ្លើងដែលបានតំលើង kW	100	80			180
3	Output Capacity in kW សមត្ថភាពដែលម៉ាស៊ីនអាចផ្តល់បាន kW	85	70			155
4	Energy Generated kWh/year ថាមពលដែលម៉ាស៊ីនអាចផលិតបានក្នុង១ឆ្នាំ kWh	448800	21000			469800
5	Energy Sent Out/Billed kWh/year ថាមពលបានប្រើ ឬ លក់ kWh/year	314160	12600			326760
6	Type of Fuel ប្រភេទប្រេងឥន្ធនៈ	Diesel	Diesel			Diesel
7	Fuel Consumption Litre/year ប្រេងឥន្ធនៈប្រើក្នុង១ឆ្នាំ	89760	4830			94590
8	Fuel Consumption Litre/kWh ប្រេងឥន្ធនៈប្រើក្នុង 1kWh	0.20	0.23			
9	No. of hours of Operation Hr/yr ចំនួនម៉ោងប្រើក្នុង១ឆ្នាំ Hr/yr	5280	300			5580
10	No. of hours of Repair Hr/yr ចំនួនម៉ោងជួសជុលក្នុង១ឆ្នាំ Hr/yr	317	15			332
11	No. of hours of Standby Hr/yr ចំនួនម៉ោងរង់ចាំជំនួស Hr/yr	3163	8445			11608



N° 10

Date :

Dec-02

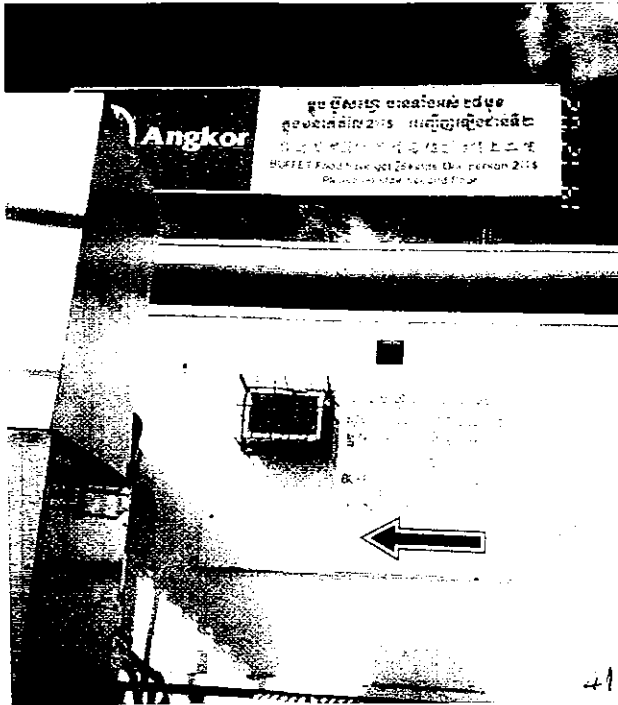
Name ឈ្មោះ :

**SANTEPHEAP Restaurant**

Location អាសយដ្ឋាន :

Sihanouk Blvd, Phnom Penh.

N°	Description	Unit 1	Unit 2	Unit 3	Unit 4	Total
1	Make & Type of Generators ម៉ាក និង ប្រភេទ ម៉ាស៊ីនភ្លើង	DENYO SILENT	DENYO SILENT			2
2	Installed Capacity in kW កម្លាំងម៉ាស៊ីនភ្លើងដែលបានតំលើង kW	100	48			148
3	Output Capacity in kW សមត្ថភាពដែលម៉ាស៊ីនអាចផ្គត់ផ្គង់បាន kW	85	40			125
4	Energy Generated kWh/year ថាមពលដែលម៉ាស៊ីនអាចផលិតបានក្នុង១ឆ្នាំ kWh	244800	4800			249600
5	Energy Sent Out/Billed kWh/year ថាមពលបានប្រើ ឬ លក់ kWh/year	195840	3840			199680
6	Type of Fuel ប្រភេទប្រេងឥន្ធនៈ	Diesel	Diesel			Diesel
7	Fuel Consumption Litre/year ប្រេងឥន្ធនៈប្រើក្នុង១ឆ្នាំ	51408	1104			52512
8	Fuel Consumption Litre/kWh ប្រេងឥន្ធនៈប្រើក្នុង 1kWh	0.21	0.23			
9	No. of hours of Operation Hr/yr ចំនួនម៉ោងប្រើក្នុង១ឆ្នាំ Hr/yr	2880	120			3000
10	No. of hours of Repair Hr/yr ចំនួនម៉ោងជួសជុលក្នុង១ឆ្នាំ Hr/yr	173	6			179
11	No. of hours of Standby Hr/yr ចំនួនម៉ោងរង់ចាំជំនួស Hr/yr	5707	8634			14341





N° 11

Date :

Dec-02

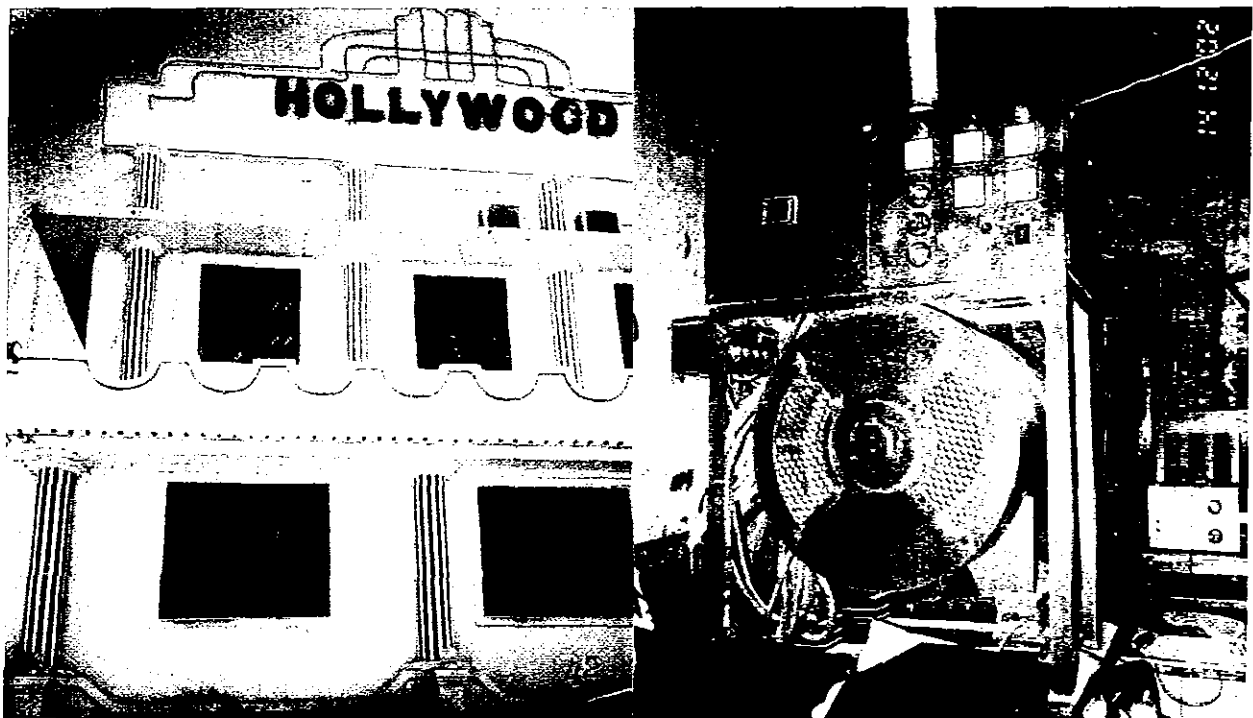
Name ឈ្មោះ :

**NEW HOLLYWOOD Restaurant**

Location អាសយដ្ឋាន :

Road 47, Don Penh, Phnom Penh

N°	Description	Unit 1	Unit 2	Unit 3	Unit 4	Total
1	Make & Type of Generators ម៉ាក និង ប្រភេទ ម៉ាស៊ីនភ្លើង	MITSUBISHI OPEN				1
2	Installed Capacity in kW កម្លាំងម៉ាស៊ីនភ្លើងដែលបានតំលើង kW	120				120
3	Output Capacity in kW សមត្ថភាពដែលម៉ាស៊ីនអាចផ្គត់ផ្គង់បាន kW	100				100
4	Energy Generated kWh/year ថាមពលដែលម៉ាស៊ីនអាចផលិតបានក្នុងឆ្នាំ kWh	182500				182500
5	Energy Sent Out/Billed kWh/year ថាមពលបានប្រើ ឬ លក់ kWh/year	127750				127750
6	Type of Fuel ប្រភេទប្រេងឥន្ធនៈ	Diesel				Diesel
7	Fuel Consumption Litre/year ប្រេងឥន្ធនៈប្រើក្នុងឆ្នាំ	36500				36500
8	Fuel Consumption Litre/kWh ប្រេងឥន្ធនៈប្រើក្នុង 1kWh	0.2				
9	No. of hours of Operation Hr/yr ចំនួនម៉ោងប្រើក្នុងឆ្នាំ Hr/yr	1825				1825
10	No. of hours of Repair Hr/yr ចំនួនម៉ោងជួសជុលក្នុងឆ្នាំ Hr/yr	110				110
11	No. of hours of Standby Hr/yr ចំនួនម៉ោងរង់ចាំជំនួស Hr/yr	6825				6825



N° 12

Date :

Dec-02

Name ឈ្មោះ :

**SAM HAN CAMBODIA FABRIC**

Location អាសយដ្ឋាន :

Road 68, Russey Keo, Phnom Penh

N°	Description	Unit 1	Unit 2	Unit 3	Unit 4	Total
1	Make & Type of Generators ម៉ាក និង ប្រភេទ ម៉ាស៊ីនភ្លើង	D.W OPEN	D.W OPEN	STAMFORD OPEN	STAMFORD OPEN	4
2	Installed Capacity in kW កម្លាំងម៉ាស៊ីនភ្លើងដែលបានតំលើង kW	480	480	524	306	1790
3	Output Capacity in kW សមត្ថភាពដែលម៉ាស៊ីនអាចផ្តល់ផ្តង់បាន kW	400	400	470	275	1545
4	Energy Generated kWh/year ថាមពលដែលម៉ាស៊ីនអាចផលិតបានក្នុង១ឆ្នាំ kWh	1497600	1497600	33840	13200	3042240
5	Energy Sent Out/Billed kWh/year ថាមពលបានប្រើ ឬ លក់ kWh/year	973440	973440	21996	8580	1977456
6	Type of Fuel ប្រភេទប្រេងឥន្ធនៈ	Diesel	Diesel	Diesel	Diesel	Diesel
7	Fuel Consumption Litre/year ប្រេងឥន្ធនៈប្រើក្នុង១ឆ្នាំ	224640	224640	4399	2112	455791
8	Fuel Consumption Litre/kWh ប្រេងឥន្ធនៈប្រើក្នុង 1kWh	0.15	0.15	0.13	0.16	
9	No. of hours of Operation Hr/yr ចំនួនម៉ោងប្រើក្នុង១ឆ្នាំ Hr/yr	3744	3744	72	48	7608
10	No. of hours of Repair Hr/yr ចំនួនម៉ោងជួសជុលក្នុង១ឆ្នាំ Hr/yr	225	225	5	1	456
11	No. of hours of Standby Hr/yr ចំនួនម៉ោងរង់ចាំជំនួស Hr/yr	4791	4791	8683	8711	26976



N° 13

Date :

Dec-02

Name ឈ្មោះ :

ETERNAL WAY (Cambodia) Ltd.

Location អាសយដ្ឋាន :

Road N° 5 , Russei Keo, Phnom Penh.

N°	Description	Unit 1	Unit 2	Unit 3	Unit 4	Total
1	Make & Type of Generators ម៉ាក និង ប្រភេទ ម៉ាស៊ីនភ្លើង	DENYO SILENT	DENYO SILENT			2
2	Installed Capacity in kW កម្លាំងម៉ាស៊ីនភ្លើងដែលបានតំលើង kW	400	280			680
3	Output Capacity in kW សមត្ថភាពដែលម៉ាស៊ីនអាចផ្គត់ផ្គង់បាន kW	360	240			600
4	Energy Generated kWh/year ថាមពលដែលម៉ាស៊ីនអាចផលិតបានក្នុង១ឆ្នាំ kWh	898560	599040			1497600
5	Energy Sent Out/Billed kWh/year ថាមពលបានប្រើ ឬ លក់ kWh/year	718848	419328			1138176
6	Type of Fuel ប្រភេទប្រេងឥន្ធនៈ	Diesel	Diesel			Diesel
7	Fuel Consumption Litre/year ប្រេងឥន្ធនៈប្រើក្នុង១ឆ្នាំ	125798	89856			215654
8	Fuel Consumption Litre/kWh ប្រេងឥន្ធនៈប្រើក្នុង 1kWh	0.14	0.15			
9	No. of hours of Operation Hr/yr ចំនួនម៉ោងប្រើក្នុង១ឆ្នាំ Hr/yr	2496	2496			4992
10	No. of hours of Repair Hr/yr ចំនួនម៉ោងជួសជុលក្នុង១ឆ្នាំ Hr/yr	200	175			375
11	No. of hours of Standby Hr/yr ចំនួនម៉ោងរង់ចាំជំនួស Hr/yr	6064	6089			12153



N° 14

Date :

Dec-02

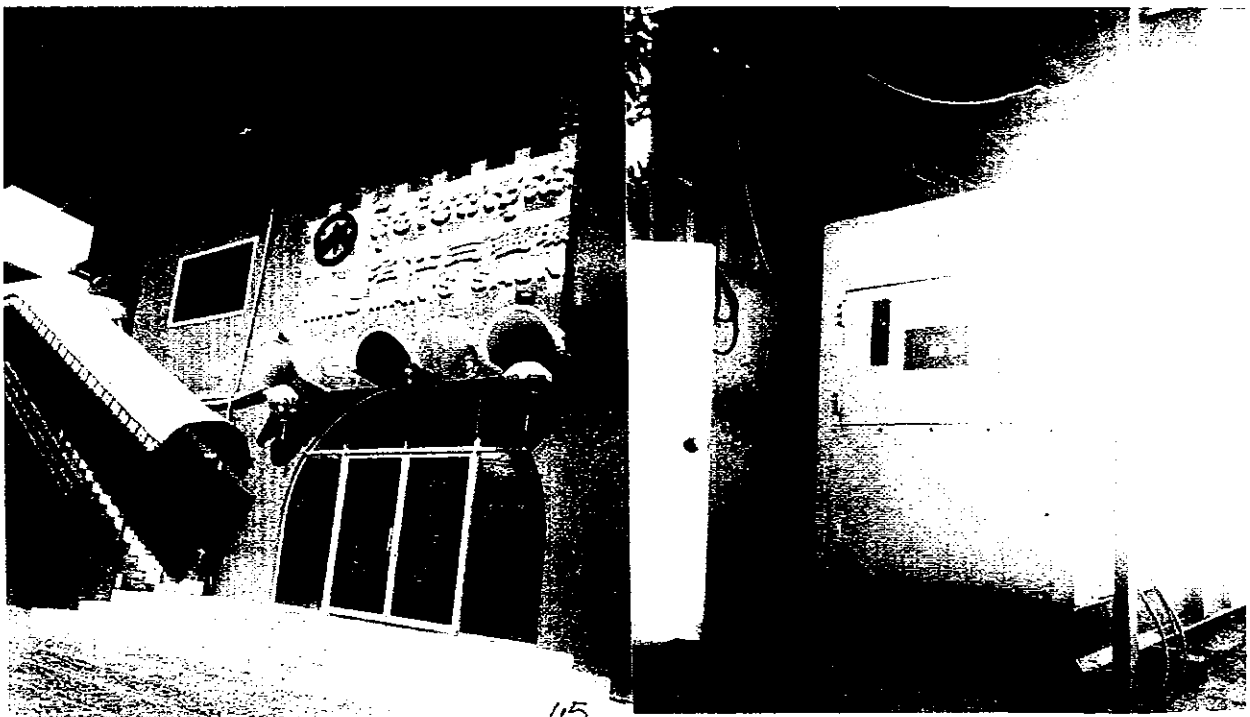
Name ឈ្មោះ :

**MING MAN'S SAUNA**

Location អាសយដ្ឋាន :

Road 214 , Don Penh, Phnom Penh.

N°	Description	Unit 1	Unit 2	Unit 3	Unit 4	Total
1	Make & Type of Generators ម៉ាក និង ប្រភេទ ម៉ាស៊ីនភ្លើង	J P N SILENT				1
2	Installed Capacity in kW កម្លាំងម៉ាស៊ីនភ្លើងដែលបានតំលើង kW	120				120
3	Output Capacity in kW សមត្ថភាពដែលម៉ាស៊ីនអាចផ្គត់ផ្គង់បាន kW	100				100
4	Energy Generated kWh/year ថាមពលដែលម៉ាស៊ីនអាចផលិតបានក្នុង១ឆ្នាំ kWh	73000				73000
5	Energy Sent Out/Billed kWh/year ថាមពលបានប្រើ ឬ លក់ kWh/year	43800				43800
6	Type of Fuel ប្រភេទប្រេងឥន្ធនៈ	Diesel				Diesel
7	Fuel Consumption Litre/year ប្រេងឥន្ធនៈប្រើក្នុង១ឆ្នាំ	14600				14600
8	Fuel Consumption Litre/kWh ប្រេងឥន្ធនៈប្រើក្នុង 1kWh	0.2				
9	No. of hours of Operation Hr/yr ចំនួនម៉ោងប្រើក្នុង១ឆ្នាំ Hr/yr	730				730
10	No. of hours of Repair Hr/yr ចំនួនម៉ោងជួសជុលក្នុង១ឆ្នាំ Hr/yr	37				37
11	No. of hours of Standby Hr/yr ចំនួនម៉ោងរង់ចាំជំនួស Hr/yr	7993				7993



N° 15

Date :

Dec-02

Name ឈ្មោះ :

BOENG MEAS Restaurant

Location អាសយដ្ឋាន :

Road N° 6A, Phnom Penh.

N°	Description	Unit 1	Unit 2	Unit 3	Unit 4	Total
1	Make & Type of Generators ម៉ាក និង ប្រភេទ ម៉ាស៊ីនភ្លើង	DENYO OPEN	DENYO OPEN			2
2	Installed Capacity in kW កម្លាំងម៉ាស៊ីនភ្លើងដែលបានតំលើង kW	80	240			320
3	Output Capacity in kW សមត្ថភាពដែលម៉ាស៊ីនអាចផ្តល់បាន kW	70	210			280
4	Energy Generated kWh/year ថាមពលដែលម៉ាស៊ីនអាចផលិតបានក្នុង១ឆ្នាំ kWh	99400	50400			149800
5	Energy Sent Out/Billed kWh/year ថាមពលបានប្រើ ឬ លក់ kWh/year	79520	40320			119840
6	Type of Fuel ប្រភេទប្រេងឥន្ធនៈ	Diesel	Diesel			Diesel
7	Fuel Consumption Litre/year ប្រេងឥន្ធនៈប្រើក្នុង១ឆ្នាំ	22862	9072			31934
8	Fuel Consumption Litre/kWh ប្រេងឥន្ធនៈប្រើក្នុង 1kWh	0.23	0.18			
9	No. of hours of Operation Hr/yr ចំនួនម៉ោងប្រើក្នុង១ឆ្នាំ Hr/yr	1420	240			1660
10	No. of hours of Repair Hr/yr ចំនួនម៉ោងជួសជុលក្នុង១ឆ្នាំ Hr/yr	71	12			83
11	No. of hours of Standby Hr/yr ចំនួនម៉ោងរង់ចាំជំនួស Hr/yr	7269	8508			15777



N° 16

Date :

Dec-02

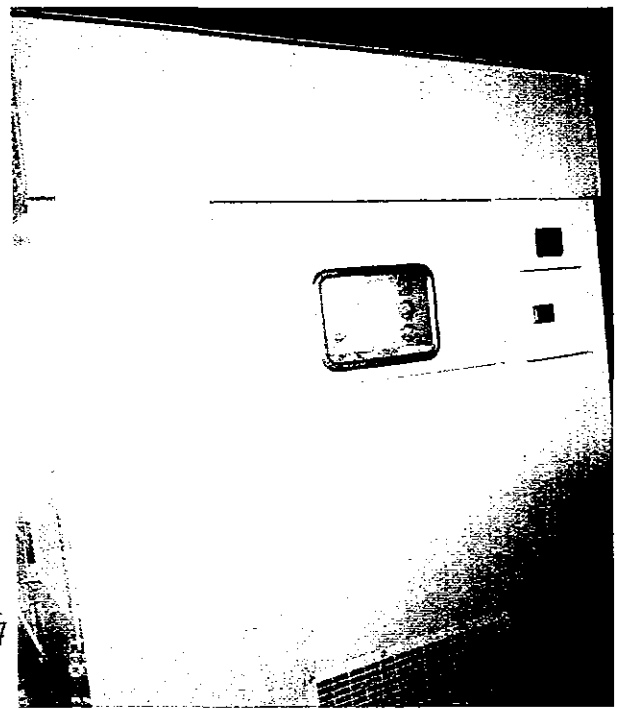
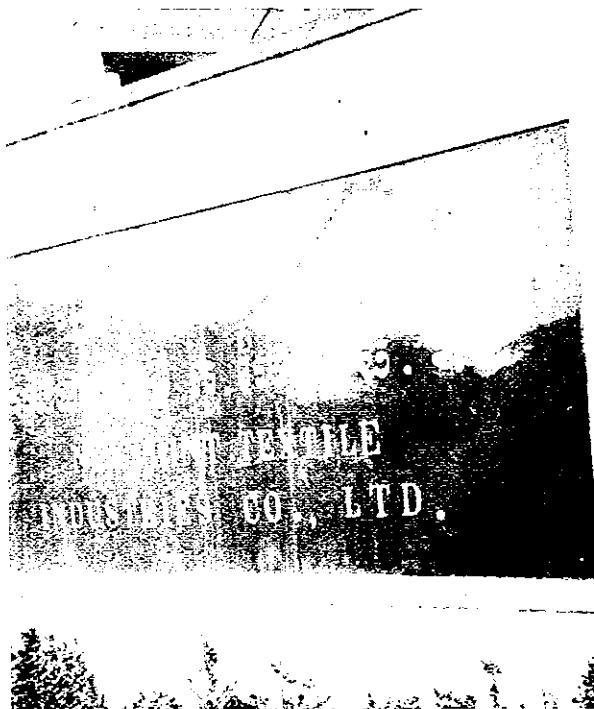
Name ឈ្មោះ :

NEW POINT TEXTILE INDUSTRIES CO., LTD

Location អាសយដ្ឋាន :

Road N° 5, Russei Keo, Phnom Penh.

N°	Description	Unit 1	Unit 2	Unit 3	Unit 4	Total
1	Make & Type of Generators ម៉ាក និង ប្រភេទ ម៉ាស៊ីនភ្លើង	YANMAR SILENT	SDMO SILENT			2
2	Installed Capacity in kW កម្លាំងម៉ាស៊ីនភ្លើងដែលបានតំលើង kW	400	80			480
3	Output Capacity in kW សមត្ថភាពដែលម៉ាស៊ីនអាចផ្គត់ផ្គង់បាន kW	360	70			430
4	Energy Generated kWh/year ថាមពលដែលម៉ាស៊ីនអាចផលិតបានក្នុង១ឆ្នាំ kWh	43200	5040			48240
5	Energy Sent Out/Billed kWh/year ថាមពលបានប្រើ ឬ លក់ kWh/year	34560	4032			38592
6	Type of Fuel ប្រភេទប្រេងឥន្ធនៈ	Diesel	Diesel			Diesel
7	Fuel Consumption Litre/year ប្រេងឥន្ធនៈប្រើក្នុង១ឆ្នាំ	6480	1210			7690
8	Fuel Consumption Litre/kWh ប្រេងឥន្ធនៈប្រើក្នុង 1kWh	0.15	0.24			
9	No. of hours of Operation Hr/yr ចំនួនម៉ោងប្រើក្នុង១ឆ្នាំ Hr/yr	120	72			192
10	No. of hours of Repair Hr/yr ចំនួនម៉ោងជួសជុលក្នុង១ឆ្នាំ Hr/yr	7	3			10
11	No. of hours of Standby Hr/yr ចំនួនម៉ោងរង់ចាំជំនួស Hr/yr	8633	8685			17318



N° 17

Date :

Dec-02

Name ឈ្មោះ :

KONG HONG 3 (Laundry)

Location អាសយដ្ឋាន :

Road N° 5, Russei Keo, Phnom Penh.

N°	Description	Unit 1	Unit 2	Unit 3	Unit 4	Total
1	Make & Type of Generators ម៉ាក និង ប្រភេទ ម៉ាស៊ីនភ្លើង	CATERPILLAR OPEN	HAIXINE OPEN			2
2	Installed Capacity in kW កម្លាំងម៉ាស៊ីនភ្លើងដែលបានតំលើង kW	500	320			820
3	Output Capacity in kW សមត្ថភាពដែលម៉ាស៊ីនអាចផ្តល់បាន kW	450	280			730
4	Energy Generated kWh/year ថាមពលដែលម៉ាស៊ីនអាចផលិតបានក្នុង១ឆ្នាំ kWh	54000	33600			87600
5	Energy Sent Out/Billed kWh/year ថាមពលបានប្រើ ឬ លក់ kWh/year	37800	23520			61320
6	Type of Fuel ប្រភេទប្រេងឥន្ធនៈ	Diesel	Diesel			Diesel
7	Fuel Consumption Litre/year ប្រេងឥន្ធនៈប្រើក្នុង១ឆ្នាំ	7560	5712			13272
8	Fuel Consumption Litre/kWh ប្រេងឥន្ធនៈប្រើក្នុង 1kWh	0.14	0.17			
9	No. of hours of Operation Hr/yr ចំនួនម៉ោងប្រើក្នុង១ឆ្នាំ Hr/yr	120	120			240
10	No. of hours of Repair Hr/yr ចំនួនម៉ោងជួសជុលក្នុង១ឆ្នាំ Hr/yr	8	6			14
11	No. of hours of Standby Hr/yr ចំនួនម៉ោងរង់ចាំជំនួស Hr/yr	8632	8634			17266



N° 18

Date :

Dec-02

Name ឈ្មោះ :

National Institute of Management (NIM)

Location អាសយដ្ឋាន :

Monivong Blvd, Phnom Penh.

N°	Description	Unit 1	Unit 2	Unit 3	Unit 4	Total
1	Make & Type of Generators ម៉ាក និង ប្រភេទ ម៉ាស៊ីនភ្លើង	SDMO SILENT				1
2	Installed Capacity in kW កម្លាំងម៉ាស៊ីនភ្លើងដែលបានតំលើង kW	400				400
3	Output Capacity in kW សមត្ថភាពដែលម៉ាស៊ីនអាចផ្តល់បាន kW	360				360
4	Energy Generated kWh/year ថាមពលដែលម៉ាស៊ីនអាចផលិតបានក្នុង១ឆ្នាំ kWh	17280				17280
5	Energy Sent Out/Billed kWh/year ថាមពលបានប្រើ ឬ លក់ kWh/year	12096				12096
6	Type of Fuel ប្រភេទប្រេងឥន្ធនៈ	Diesel				Diesel
7	Fuel Consumption Litre/year ប្រេងឥន្ធនៈប្រើក្នុង១ឆ្នាំ	2419				2419
8	Fuel Consumption Litre/kWh ប្រេងឥន្ធនៈប្រើក្នុង 1kWh	0.14				
9	No. of hours of Operation Hr/yr ចំនួនម៉ោងប្រើក្នុង១ឆ្នាំ Hr/yr	48				48
10	No. of hours of Repair Hr/yr ចំនួនម៉ោងជួសជុលក្នុង១ឆ្នាំ Hr/yr	3				3
11	No. of hours of Standby Hr/yr ចំនួនម៉ោងរង់ចាំជំនួស Hr/yr	8709				8709





N° 19

Date :

Dec-02

Name ឈ្មោះ :

**INDOBEST Company Limited**

Location អាសយដ្ឋាន :

Sihanouk Blvd, Phnom Penh.

N°	Description	Unit 1	Unit 2	Unit 3	Unit 4	Total
1	Make & Type of Generators ម៉ាក និង ប្រភេទ ម៉ាស៊ីនភ្លើង	DENYO SILENT				1
2	Installed Capacity in kW កម្លាំងម៉ាស៊ីនភ្លើងដែលបានតំលើង kW	200				200
3	Output Capacity in kW សមត្ថភាពដែលម៉ាស៊ីនអាចផ្តុំផ្គត់ផ្គង់បាន kW	180				180
4	Energy Generated kWh/year ថាមពលដែលម៉ាស៊ីនអាចផលិតបានក្នុង១ឆ្នាំ kWh	410400				410400
5	Energy Sent Out/Billed kWh/year ថាមពលបានប្រើ ឬ លក់ kWh/year	328320				328320
6	Type of Fuel ប្រភេទប្រេងឥន្ធនៈ	Diesel				Diesel
7	Fuel Consumption Litre/year ប្រេងឥន្ធនៈប្រើក្នុង១ឆ្នាំ	69768				69768
8	Fuel Consumption Litre/kWh ប្រេងឥន្ធនៈប្រើក្នុង 1kWh	0.17				
9	No. of hours of Operation Hr/yr ចំនួនម៉ោងប្រើក្នុង១ឆ្នាំ Hr/yr	2280				2280
10	No. of hours of Repair Hr/yr ចំនួនម៉ោងជួសជុលក្នុង១ឆ្នាំ Hr/yr	114				114
11	No. of hours of Standby Hr/yr ចំនួនម៉ោងរង់ចាំជំនួស Hr/yr	6366				6366

