

別 添 資 料

別添資料

資料1 協議議事録

資料2 調査日程

資料3 主要面談者

資料4 収集資料リスト A

資料5 収集資料リスト B

A.1 第9次5ヵ年計画中の整備対象予定の中学校リスト

A.2 ミニッツ Annex 2 修正版

A.3 ミニッツ Annex 3 修正版

B.1 教育省学校計画建設課（SPBD）の組織図

B.2 学校施設標準設計図面

B.3 LGSF 工法の案内

B.4 LGSF 工法 設計図（抜粋）

B.5 要請校敷地測量図（14校分）

B.6 要請校敷地利用状況メモ（5校分）

B.7 施工業者のカテゴリー分類とクラス別登録条件

B.8 施工業者リスト（クラス A）

B.9 施工業者の会社概要（5社）

B.10 建設資機材の調達状況

B.11 建設労働者の賃金と工事別施工効率

B.12 内陸輸送コスト情報

B.13 資機材供給業者の概要と資材コスト

B.14 地域別セメント価格

B.15 コンクリートブロック製造業者概要

B.16 家具メーカー概要

B.17 家具メーカーリストと家具標準単価（SPBD）

B.18 県発注による学校施設工事入札の新聞公示

B.19 世銀プロジェクト（SEP）による学校建設

B.20 建設コスト積算資料

B.21 地域別気象データ（月別気温、降雨量）

（写真資料）

C.1 ~ C.10

**Minutes of Discussion on
the Preparatory Study on the Project for
the Construction of Fifteen Schools
in the Kingdom of Bhutan**

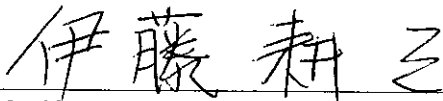
In response to a request from the Royal Government of Bhutan (hereinafter referred to as "Bhutan"), the Government of Japan has decided to conduct a Preparatory Study on the Project for Construction of Fifteen Schools (hereinafter referred to as "the Project"), and entrusted the study to Japan International Cooperation Agency (JICA).

JICA sent to Bhutan the Preparatory Study Team headed by Mr. Kozo ITO, Deputy Resident Representative, India Office, JICA, and is scheduled to stay in the country from November 20 to the December 11, 2003.

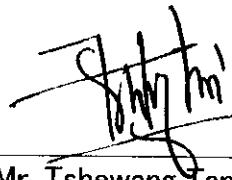
The team held series of discussions on the Project with the officials concerned from the Government of Bhutan and conducted field surveys at the study areas.

As a result of the discussions and field surveys, both parties confirmed the main items described on the attached sheets.

Thimphu, 27th November 2003



Mr. Kozo ITO
Leader
Preparatory Study Team
JICA
Japan



Mr. Tshewang Tandin
Director
Department of School Education
Ministry of Education
Royal Government of Bhutan

ATTACHMENT

1. Objective of the Project

The objective of the Project is to improve the access and the educational environment of Middle Secondary Schools (MSS) and Higher Secondary Schools (HSS) in Bhutan by reconstructing the damaged/old-aged school buildings, extending the capacity of existing schools and constructing new schools.

2. Project Sites

The sites of the Project are located in 12 Dzongkhags of Bhutan.

3. Responsible and Implementing Organizations

3-1. The responsible organization is the Ministry of Education.

3-2. The implementing agency is the Policy Planning Division (PPD) and the School Planning and Building Division (SPBD).

3-3. The organization chart of the Ministry of Education is attached as Annex-1.

4. Request from the Bhutanese side

After a series of discussion with the team, the Bhutanese side requested the items described in Annex-2 and Annex-3.

5. Japan's Grant Aid Scheme

5-1. The Bhutanese side understood the Japan's Grant Aid Scheme as explained by the Japanese Team, as described in Annex-5.

5-2. The Bhutanese side will take the necessary measures, as described in Annex-6, for smooth implementation of the Project, on condition that the Japan's Grant Aid will be extended to the Project.

6. Nature of the Study

The Bhutanese side understood that the commitment to implement the Project including the Basic Design Study could not be made by the Japanese side at the Preparatory Study stage. As a result of the Preparatory Study, the Government of Japan will decide whether to conduct the Basic Design Study of the Project.

7. Other relevant Issues



7-1. Selection of requested schools

The Bhutanese side explained that the schools with better accessibility and with bigger pressure for facilities because of the increased number of students were selected as the requested schools for the Project. The Bhutanese side also explained that in order to secure equity and fairness among regions, it is its national policy to avoid specific donor to concentrate its cooperation on one region, and therefore, the requested schools were selected considering regional distribution.

7-2. Criteria for site selection

The Japanese side explained that if Japan's Grant Aid were to be extended to the Project, the requested schools would be examined according to the general selection criteria listed in Annex-4. Although the Kabjisa MSS, Tsirang HSS, Thimiyong MSS and Buli HSS currently do not fulfill the criteria in terms of the road access, the Bhutanese side explained that they would ensure all the requested schools to have the road access. If the road access would not be possible, the most suitable alternative site would be proposed.

7-3. Requested components

Considering the growing needs for the secondary education in Bhutan, the Japanese side pointed out the importance of enlarging beneficiaries of the Project by prioritizing the components that have direct impact on improving the access to the schools such as classrooms and hostels and explained that the full set of requested components could not be met in the Project.

The Bhutanese understood the Japanese policy and set the priority orders for the requested components based on the idea that essential items for school operation and management should be given the higher priority than other components. The Bhutanese side also explained that the components with the priority number 1 to 3 are the standard components for existing secondary schools.

7-4. Demolishing works and temporary classrooms

The Bhutanese side understood that implementing demolishing works and securing necessary temporary classrooms are to be the Bhutanese undertakings under the Japanese Grant Aid system.

7-5. Site development works

The Bhutanese side pointed out that considering the mountainous topography in



Bhutan, there would be substantial amount of site development works (cutting, filling, retaining walls, etc) to be done under the recipient's responsibility. Therefore, the Bhutanese side requested the Japanese side to consider including these development works in the Japanese undertakings and also to secure reasonable range of time for the Bhutanese side to conduct these works when considering the time frame of the Project.

7-6. Construction method and the Bhutanese traditional building designs

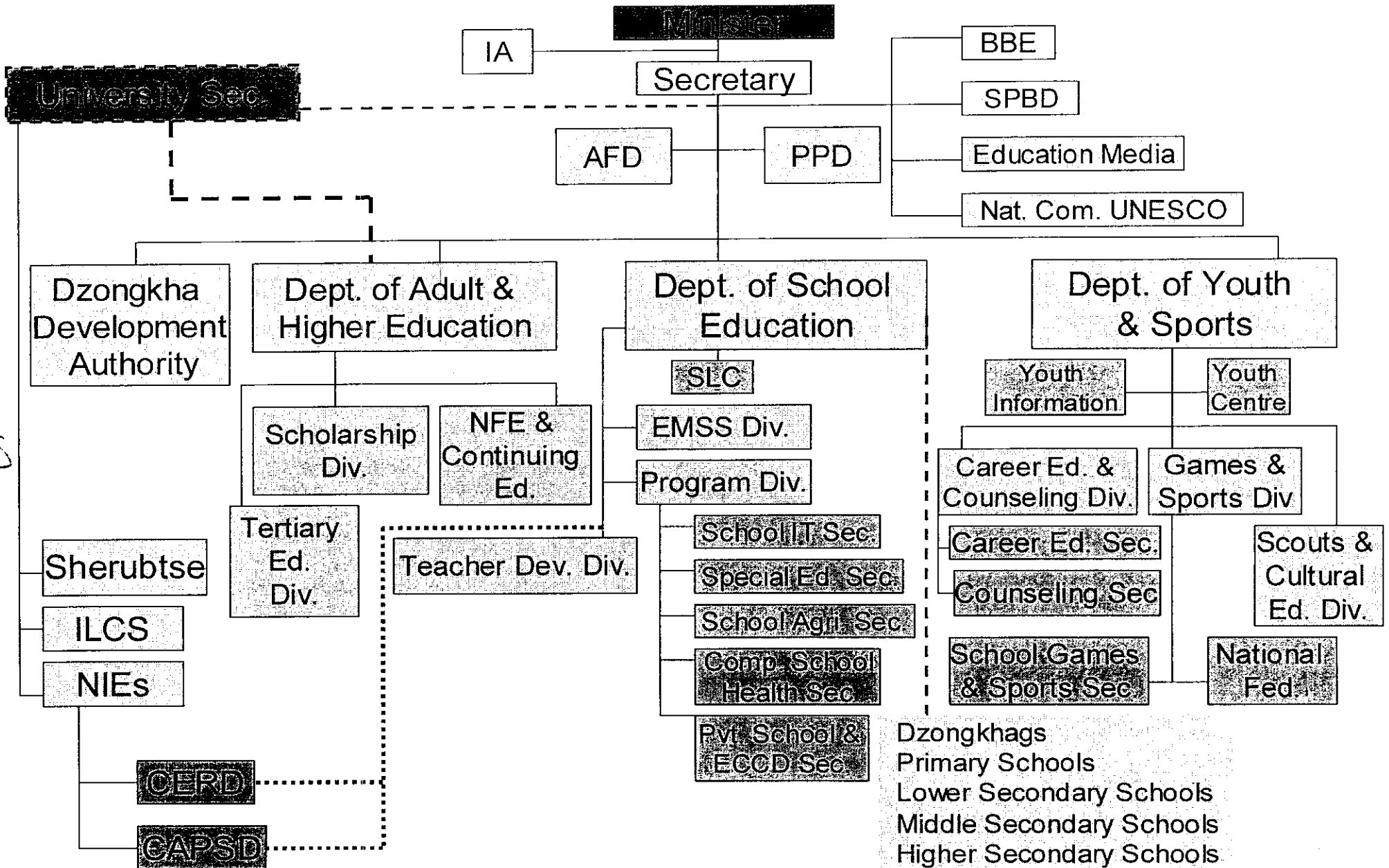
The Bhutanese side explained that the Ministry of Education had piloted the Light Gauge Steel Frame method in Thimphu funded by Denmark. This method has been recommended to the school construction projects funded by the World Bank and the Government of India. The Bhutanese side also explained that in terms of the school construction implemented by the Dzongkhag level, which are to be funded by the Ministry's capital budget including the budgetary support from Denmark, the ordinary construction method (rock laid method) would be applied. The both sides agreed that the construction method to be applied to the Project would be decided by the Japanese side.

The Bhutanese side explained that the Bhutanese traditional building designs must be attached to every general building to be constructed in Bhutan. The Bhutanese side suggested that the Japanese side to refer to the standard designs made by the Ministry of Education in attaching the Bhutanese traditional designs, which are not very complicated.

The Japanese side explained that it is necessary to make every effort in attaining the cost effectiveness of the Project both in terms of the construction method and the application of the traditional building designs in order to make the most out of the limited budget.



Organisational Structure Ministry of Education



Handwritten mark


Handwritten mark

Dzongkhags
 Primary Schools
 Lower Secondary Schools
 Middle Secondary Schools
 Higher Secondary Schools



Abbreviations:

IA -Internal Auditor
AFD -Administration & Finance Division
PPD -Policy & Planning Division
BBE -Bhutan Board of Examinations
SPBD -School Planning & Building Division
SLC -School Liaison and Coordination Cell
EMSS -Education Monitoring & Support Service Division
ECCD -Early Childhood Care & Development
ILCS -Institute of Language & Cultural Studies
NIE -National Institute of Education
CERD -Centre for Educational Research & Development
CAPSD -Curriculum & Professional Support Division



Annex 2 List of Requested Schools

	School	Dzongkhag	Level		Classes		Students		Boarders		Day/ Boarding	Status Change	Type of Construction	Existing Clrooms	Demolish	Reconst.	Add. Const.	Const. Requeste d to Japan	Total
			Now	Planned	Now	Planned	Now	Planned	Now	Planned									
1	Phobjikha	Wangdue	New	MSS	I-VI	PP-X	466	720	0	256	Boarding	Upgrade	Relocation/Ne w Const.	0	0	0	20	20	20
2	Genekha	Thimphu	LSS	MSS	PP-VII	VII-X	146	720	53	256	Boarding	Upgrade	Add. Const.	8	0	0	12	12	20
3	Kabjisa	Punakha	LSS	MSS	PP-VII	PP-X	555	560	80	0	Day	Upgrade	Reconst. & Add. Const.	17	14	14	6	20	23
4	Bitekha	Paro	LSS	MSS	PP-VIII	PP-X	387	648	57	128	Boarding	Upgrade	Add. Const n(9-10)	14	10	10	6	16	20
5	Dala	Chukha	MSS	MSS	PP-X	PP-X	1283	936	139	192	Boarding	No change	Reconst. & Add. Const.	21	15	15	5	20	26
6	Tangsibi	Trongsa	New	MSS	None	VII-X	0	648	0	384	Boarding	New Establishment	New Const.	0	0	0	18	18	18
7	Bartsham	Trasigang	LSS	MSS	P-VII	PP-X	367	871	0	256	Boarding	Upgrade	Recon. & Add. Const.	18	0	0	6	6	24
8	Lango	Paro	LSS	MSS	P-VIII	PP-X	732	994	0	0	Day	Upgrade	Recon. & Add. Const.	16	10	10	8	18	24
9	Kanglung	Trasigang	New	MSS	None	VII-X	0	720	0	0	Day	New Establishment	Add. Const.	8	0	0	12	12	20
10	Thimpyong	Lhuentse	PS	MSS	PP-III	PP-X	131	720	0	256	Boarding	Upgrade	Add. Const. (4- 10) only	6	0	0	14	14	20
11	Buji	Zhemgang	New	HSS	None	VII-XII	0	720	0	384	Boarding	New Establishment	New Const.	0	0	0	20	20	20
12	Tsicang	Tsicang	New	HSS	None	VII-XII	0	720	0	384	Boarding	New Establishment	New Const.	0	0	0	20	20	20
13	Chukha	Chukha	HSS	HSS	IX-XII	IX-XII	570	756	372	292	Boarding	No change	Recon. & Add. Const.	20	6	6	0	6	20
14	Gyelposhing	Mongar	New	HSS	None	IX-XII	0	720	0	192	Boarding	New Establishment	New Const.	6	0	0	14	14	20
15	Autsho	Lhuentse	CPS	MSS	PP-VI	PP-X	159	504	0	256	Boarding	Upgrade	Reconst. & Add. Const.	12	6	6	8	14	20
													Total	146	61	61	169	230	315

Note: The present class coverage comes from Page 64-72 of the General Statistics 2003 issued by MOE.

* Kabjisa LSS will become a day school.

** The level of current Kanglung LSS (PP-8) will be reduced to Kanglung PS (PP-6) and new Kanglung MSS (7-10) will be created.

***The level of current Gyelposhing HSS (7-12) will be reduced to Gyelposhing LSS (PP-8) and new Gyelposhing HSS (9-12) will be created.

Annex 3 List of Requested Components

School Name	Phobjikha LSS		Genekha LSS		Kabjisa LSS		Bitekha LSS		Dala MSS		Tangsibi		Bartsham LSS		Lango LSS	
	No.	Priority	No.	Priority	No.	Priority	No.	Priority	No.	Priority	No.	Priority	No.	Priority	No.	Priority
Class Rooms (6Units Block)	3	0	1	0	3	0		0	3	0	2	0	1	0	2	0
Class Rooms (4Units Block)	-	0	1	0	-	0	3	0	-	0	1	0		0	1	0
Aqua Privy Toilets	2	1	2	1	2	1	2	1	2	1	2	1	2	1	2	1
Science Laboratory	1	1	1	1	1	1	1	1	1	1	1	1	1	1	1	1
Administrative Block	1	2	1	2	1	2	1	2	1	2	1	1	1	2	1	2
Multipurpose Hall	1	2	1	2	1	3	1	2	1	2	1	2	1	2	1	3
Hostel (64 beds)	4	1	4	1	-	-	2	1	2	1	4	1	4	1	-	-
Hostel Toilet(Boys & Girls)	4	1	4	1	-	-	2	1	2	1	4	1	4	1	-	-
Kitchen & Storage	1	1	1	1	-	-	1	1	1	1	1	1	1	1	-	-
Warden's & Matron's quarter	2	1	2	1	-	-	2	1	2	1	2	1	2	1	-	-
Principals' quarter	1	1	1	1	1	1	1	1	1	1	1	1	1	1	1	1
Staff quarter (4Units)	2	2	2	2	2	2	1	2	1	3	3	2	-	-	-	-
Football Field	1	2	1	2	1	2	1	2	1	2	1	2	1	2	1	2
Basketball Court	1	2	1	2	1	2	1	2	1	2	1	2	1	2	1	3
Educational Furniture	*	1	*	1	*	1	*	1	*	1	*	1	*	1	*	1
Laboratory Equipment	○	4	○	4	○	4	○	4	○	4	○	4	○	4	○	4
Office Equipment	○	4	○	4	○	4	○	4	○	4	○	4	○	4	○	4
Computers & Peripherals	20	4	20	4	20	4	20	4	20	4	20	4	20	4	20	4
School Bus	-		-		-		-		-		1	4	1	4	-	
Planned Status of the school	MSS		MSS		MSS		MSS		MSS		MSS		MSS		MSS	

- ① School name shows the current status of the school. Schools without school status are currently non-existent schools.
- ② Priority order is set for the components without classrooms by the Bhutanese side. Classrooms are the highest priority among all of the components.
- ③ Science Laboratory for the MSS and HSS consists of 3 laboratories for physics, chemistry, biology, a library and a computer room according to the SPBD standard designs.
- ④ Administrative block consists of a teachers room, headmaster's room and 2 classrooms according to the SPBD standard design.
- ⑤ Since Dala MSS and Kanglung MSS currently has a general science laboratory and a library, the requested science laboratory only consists of 3 rooms.
- ⑥ * = The amount of furniture will be decided according to the whatever is decided to be the building components.
- ⑦ ○ = 1 Unit

Annex-3 List of Requested Components

School Name	Kanglung		Thimiyong CPS		Buli		Tsirang		Chukha HSS		Gyeposhing		Autsho CPS	
	No.	Priority	No.	Priority	No.	Priority	No.	Priority	No.	Priority	No.	Priority	No.	Priority
Components														
Class Rooms (6Units Block)	2	0	2	0	3	0	3	0	-	0	2	0	2	0
Class Rooms (4Units Block)	-	0	-	0	-	0	-	0	1	0	-	0	-	0
Aqua Privy Toilets	2	1	2	1	2	1	2	1	2	1	-		2	1
Science Laboratory	1	1	1	1	1	1	1	1	1	1	-		1	1
Administrative Block	-	-	1	2	1	2	1	1	-		1	2	1	2
Multipurpose Hall	1	3	1	2	1	2	1	2	1	2	1	2	1	2
Hostel (64 beds)	-		4	1	-		-		-		-		4	1
Hostel (96 beds)	-		-		4	1	4	1	2	1	2	1	-	
Hostel Toilet(Boys & Girls)	-		2	1	4	1	4	1	2	1	2	1	4	1
Kitchen & Storage	-		-		1	1	1	1	1	1	1	1	1	1
Warden's & Matron's quarter	-		2	1	2	1	2	1	-		2	1	2	1
Pricipal's quarter	1	1	1	1	1	1	1	1	-		1	1	1	1
Staff quarter (4Units)	3	2	2	1	3	1	3	2	-		2	2	2	1
Football Field	1	2	1	2	1	2	1	2	1	2	1	2	1	2
Basketball Court	1	1	1	1	1	1	1	1	1	1	1	1	1	1
Educational Furniture	*	1	*	1	*	1	*	1	*	1	*	1	*	1
Laboratory Equipment	○	4	○	4	○	4	○	4	○	4	○	4	○	4
Office Equipment	○	4	○	4	○	4	○	4	○	4	○	4	○	4
Computers & Peripherals	20	4	20	4	30	4	30	4	30	4	30	4	30	4
School Bus	-		1	4	1	4	1	4	-		-		1	4
		MSS		MSS		HSS		HSS		HSS		HSS		MSS

- ① School name shows the current status of the school. Schools without school status are currently non-existent schools.
- ② Priority order is set for the components without classrooms by the Bhutanese side. Classrooms are the highest priority among
- ③ Science Laboratory for the MSS and HSS consists of 3 laboratories for physics, chemistry, biology, a library and a computer room according to the SPBD standard designs.
- ④ Administrative block consists of a staff's office, headmaster's office and 2 classrooms according to the SPBD standard design.
- ⑤ Since Dala MSS and Kanglung MSS currently has a general science laboratory and a library, the requested science laboratory only consists of 3 rooms.
- ⑥ * = The amount of furniture will be decided according to the whatever is decided to be the building components.
- ⑦ ○ = 1 Unit

ANNEX 4 General Criteria for the School Site Selection

Schools/sites satisfying the following criteria will be given priority

1. Urgently needs the construction of classrooms because of overcrowding (even after the introduction of double-shift or multi-grade classes).
2. Urgently needs reconstruction because of over aging and/or damage of existing buildings

Schools /sites to be selected must fulfill the following criteria:

3. Present and future demand can be quantitatively estimated by a set of data such as the number of school-aged children, the rates of population growth, enrollment ratio, etc.
4. Sufficient teachers, budget allocation, and necessary cooperation from concerned people for the proper operation and maintenance of the facilities are secured.
5. No other program or plan for new/undergoing classroom construction by Ministry of Education, local government, other donors, NGOs and so forth.
6. Ownership of land for construction is legally secured, and the evidence of land ownership will be provided to the Japanese side.
7. Access road for the movement of materials and the construction works are properly constructed.
8. Topographically safe and appropriate-sized land for construction is secured.
9. No foreseen natural and environmental or social hazard.



ANNEX 5 The Japan's Grant Aid Scheme

The Grant Aid Program provides a recipient country with non-reimbursable funds to procure the facilities, equipment and services (engineering services and transportation of the products, etc.) for economic and social development of the country under principles in accordance with the relevant laws and regulations of Japan. Grant Aid is not supplied through the donation of materials as such.

(1) Grant Aid Procedure

1) Japan's Grant Aid Program is executed through the following procedures.

Application (Request made by a recipient country)

Study (Basic Design Study conducted by JICA)

Appraisal & Approval

(Appraisal by the Government of Japan and Approval by Cabinet)

Determination of Implementation

(The Notes exchanged between the Governments of Japan and the recipient country)

2) Firstly, the application or request for a Grant Aid project submitted by a recipient country is examined by the Government of Japan (Ministry of Foreign Affairs) to determine whether or not it is eligible for Grant Aid. If the request is deemed appropriate, the Government of Japan assigns JICA to conduct a study on the request. If necessary, JICA send a Preliminary Study Mission to the recipient country to confirm the contents of the request.

Secondly, JICA conducts the study (Basic Design Study), using Japanese consulting firms.

Thirdly, the Government of Japan appraises the project to see whether or not it is suitable for Japan's Grant Aid Programme, based on the Basic Design Study report prepared by JICA, and the results are then submitted to the Cabinet for approval.

Fourthly, the project, once approved by the Cabinet, becomes official with the Exchange of Notes signed by the Governments of Japan and the recipient country.

Finally, for the implementation of the project, JICA assists the recipient country in such matters as preparing tenders, contracts and so on.

(2) Basic Design Study

1) Contents of the Study

The aim of the Basic Design Study (hereinafter referred to as "the Study"), conducted by JICA on a requested project (hereinafter referred to as "the Project"), is to provide a basic document necessary for the appraisal of the Project by the Government of Japan. The contents of the Study are as follows:

- a) confirmation of the background, objectives and benefits of the Project and also institutional capacity of agencies concerned of the recipient country necessary for the Project's implementation;
- b) evaluation of the appropriateness of the Project to be implemented under the Grant Aid Scheme from the technical, social and economic points of view;
- c) confirmation of items agreed on by both parties concerning the basic concept of the Project;
- d) preparation of a basic design of the Project; and
- e) estimation of costs of the Project.

The contents of the original request are not necessarily approved in their initial form as the contents of the Grant Aid project. The Basic Design of the Project is confirmed

considering the guidelines of Japan's Grant Aid Scheme.

The Government of Japan requests the Government of the recipient country to take whatever measures are necessary to ensure its self-reliance in the implementation of the Project. Such measures must be guaranteed even through they may fall outside of the jurisdiction of the organization in the recipient country actually implementing the Project. Therefore, the implementation of the Project is confirmed by all relevant organizations of the recipient country through the Minutes of Discussions.

2) Selection of Consultants

For the smooth implementation of the Study, JICA uses a consulting firm selected through its own procedure (competitive proposal). The selected firm participates in the Study and prepares for a report based upon the terms of reference set by JICA.

At the beginning of implementation after the Exchange of Notes, for the services of the Detailed Design and Construction Supervision of the Project, JICA recommends the same consulting firm which participated in the Study to the recipient country in order to maintain the technical consistency.

(3) Japan's Grant Aid Scheme

1) Exchange of Notes (E/N)

Japan's Grant Aid is extended in accordance with the Notes exchanged by the two Governments concerned, in which the objectives of the project, period of execution, conditions and amount of the Grant Aid, etc., are confirmed.

2) "The period of the Grant" means the one fiscal year which the Cabinet approves the project for. Within the fiscal year, all procedure such as exchanging of the Notes, concluding contracts with consulting firms and contractors and final payment to them must be completed.

However, in case of delays in delivery, installation or construction due to unforeseen factors such as weather, the period of the Grant Aid can be further extended for a maximum of one fiscal year at most by mutual agreement between the two Governments.

3) Under the Grant, in principle, Japanese products and services including transport or those of the recipient country are to be purchased.

When the two Governments deem it necessary, the Grant Aid may be used for the purchase of the products or services of a third country.

However, the prime contractors, namely consulting, contracting and procurement firms, are limited to "Japanese nationals". (The term "Japanese nationals" means persons of Japanese nationality or Japanese corporations controlled by persons of Japanese nationality.)

4) Necessity of "Verification"

The Government of the recipient country or its designated authority will conclude contracts denominated in Japanese yen with Japanese nationals. Those contracts shall be verified by the Government of Japan. This "Verification" is deemed necessary to secure accountability to Japanese taxpayers.

5) Undertakings required to the Government of the recipient country

a) to secure land necessary for the sites of the Project and to clear, level and reclaim the land prior to commencement of the construction;

b) to provide facilities for distribution of electricity, water supply and drainage and other



- incidental facilities in and around the sites;
- c) to ensure all expenses and prompt execution for unloading and customs clearance at ports of disembarkation in the recipient country and internal transportation therein of the products purchased under the Grant Aid;
 - d) to exempt Japanese nationals from customs duties, internal taxes and other fiscal levies which may be imposed in the recipient country with respect to the supply of the products and services under the verified contracts;
 - e) to accord Japanese nationals whose services may be required in connection with the supply of the products and services under the verified contracts such as facilities as may be necessary for their entry into the recipient country and stay therein for the performance of their work;
- 6) "Proper Use"
- The recipient country is required to operate and maintain the facilities constructed and equipment purchased under the Grant Aid properly and effectively and to assign the necessary staff for operation and maintenance as well as to bear all the expenses other than those covered by the Grant Aid.
- 7) "Re-export"
- The products purchased under the Grant Aid shall not be re-exported from the recipient country.
- 8) Banking Arrangement (B/A)
- a) The Government of the recipient country or its designated authority should open an account in the name of the Government of the recipient country in a bank in Japan (hereinafter referred to as "the Bank"). The Government of Japan will execute the Grant Aid by making payments in Japanese yen to cover the obligations incurred by the Government of the recipient country or its designated authority under the verified contracts.
 - b) The payments will be made when payment requests are presented by the Bank to the Government of Japan under an Authorization to Pay (A/P) issued by the Government of recipient country or its designated authority.
- 9) Authorization to Pay (A/P)
- The Government of the recipient country should bear an advising commission of an Authorization to Pay and payment commissions to the Bank.



ANNEX 6 Necessary Measures Undertakings by Each Government

No	Items	To be covered by Grant Aid	To be covered by Recipient side	
1	To secure land		●	
2	To clear, level and reclaim the site when needed		●	
3	To construct gates and fences in and around the site		●	
4	To construct the parking lot	●		
5	To construct roads			
	1) Within the site	●		
	2) Outside the site		●	
6	To construct the building	●		
7	To provide facilities for the distribution of electricity, water supply, drainage and other incidental facilities			
	1) Electricity			
	a.	The distributing line to the site		●
	b.	The drop wiring and internal wiring within the site	●	
	c.	The main circuit breaker and transformer	●	
	2) Water Supply			
	a.	The city water distribution main to the site		●
	b.	The supply system within the site	●	
	3) Drainage			
	a.	The city drainage main (for storm, sewer and others) to the site		●
	b.	The drainage system (for toilet sewer, ordinary waste, storm drainage and others) within the site	●	
	4) Gas Supply			
	a.	The city gas main to the site		●
	b.	The gas supply system within the site	●	
	5) Telephone System			
	a.	The telephone trunk line to the main distribution frame / panel (MDF) of the building		●
b.	The MDF and the extension after the frame / panel	●		
6) Furniture and Equipment				
a.	General furniture		●	
b.	Project equipment	●		
8	To bear the following commissions to a bank of Japan for the banking services based upon the B/A			
	1)	Advising commission of A/P		●
	2)	Payment commission		●
9	To ensure prompt unloading and customs clearance at the port of disembarkation in recipient country			
	1)	Marine(Air) transportation of the products from Japan to the recipient country	●	
	2)	Tax exemption and customs clearance of the products at the port of disembarkation		●
	3)	Internal transportation from the port of disembarkation to the project site	(●)	(●)
10	To accord Japanese nationals whose services may be required in connection with the supply of the products and the services under the verified contract such facilities as may be necessary for their entry into the recipient country and stay therein for the performance of their work		●	
11	To exempt Japanese nationals from customs duties, internal taxes and other fiscal levies which may be imposed in the recipient country with respect to the supply of the products and services under the verified contracts		●	
12	To maintain and use properly and effectively the facilities constructed and equipment provided under the Grant		●	
13	To bear all the expenses, other than those to be borne by the Grant, necessary for construction of the facilities as well as for transportation and installation of the equipment		●	

調査日程

Date		Mr. Kozo ITO	Ms. Yuki SHIBUYA	Mr. Satoru TAKAHASHI	Mr. Fumio TONAI
		Team Leader	Planning Management	Education Planning	Facility/Construction Planning
18-Nov	Tue	1120 Tokyo(JL 471)→1730 Delhi (Other than Mr. ITO)			
19-Nov	Wed	1000 Meeting with JICA Office 1500 Courtesy call to EOJ India			
20-Nov	Thu	0900 Delhi(KB 205)→1245 Paro 1530-1550 Courtesy call to Ministry of Education			
21-Nov	Fri	1000-1230 Discussion with Ministry of Education 1500-1600 Courtesy call to Ministry of Finance			
22-Nov	Sat	0800-1000 Thimphu→Phunaka 1130-1900 Site survey at Kabjisa LSS, Kuruthang LSS			
23-Nov	Sun	Intermission meeting			
24-Nov	Mon	0930-1300 Discussion with Ministry of Education 1400-1445 Visit Liaison Office of Denmark			
25-Nov	Tue	0930-1015 Visit Rinchen Kuenphen Primary School (Light Gauge Steel Frame: LGSF Pilot Building) 1030-1130 Visit Changjiji LSS (LGSF Pilot Building) 1200-1330 Drive to Chapcha 1430-1830 Visit Chapcha MSS (WB supported school)			
26-Nov	Wed	0930-1200 Discussion with Ministry of Education 1200-1330 Thimphu→Paro 1430-1830 Visit Drukgyel HSS (UK supported school)			
27-Nov	Thu	1000-1100 Discussion with Ministry of Education 1200 Signing M/D 1500 Report to JICA Office			
28-Nov	Fri	0930 Paro(KB124) →1000 Calcutta	0930 Paro(KB124) →1450 Bangkok 2215 Bangkok(JL718)	Discussion with DSE & PPD	Discussion with SPBD
29-Nov	Sat	0650 Tokyo		Data analysis	
30-Nov	Sun	PM Thimphu → Chukha			
1-Dec	Mon	Visit Chukha HSS Visit Dala MSS Visit Community Primary School			
2-Dec	Tue	Chukha Thimphu		Chukha → Phuentsholing Collect information on Procurement	
3-Dec	Wed	Meet Donors (SDC, GOI, WB) (Still under consideration)		Phuentsholing → Thimphu	
4-Dec	Thu	Visit schools supported by other donors Khasadrapchu MSS and Dechencholing LSS (GOI)			
5-Dec	Fri	Discussion with PPD & DSE.		Collect information on local contractors	

			(CDB)
6-Dec	Sat		Data analysis
7-Dec	Sun		Data analysis
8-Dec	Mon		Visit Lango MSS Visit Biteka LSS Preferably visit Community Primary School
9-Dec	Tue		Discussion with PPD & DSE Collect information on Procurement (Nado Rinchen & Penjor Dorji AFD) & Transportation
10-Dec	Wed		Further discussion with Ministry of Education Report to JICA Bhutan
11-Dec	Thu		0930 Paro(KB124)→1450 Bangkok 2215 Bangkok(JL718)→
12-Dec	Fri		0650 Tokyo

SPBD: School Planning and Building Division

PPD: Policy and Planning Division

DSE: Department of School Education

SEP: Second Education Project (World Bank)

SDC: Swiss Development Cooperation

GOI: Government of India

AFD: Administration and Finance Division

LSS: Lower Secondary School

MSS: Middle Secondary School

HSS: Higher Secondary School

主要面談者

1. 在インド日本大使館

井上 知郁 一等書記官

2. JICA ブータン駐在員事務所

森 靖之 所長

久保 祐輔 企画調査員

3. 財務省 : Ministry of Finance

Ms. Yanki Tobgyel Wangchuk Finance Secretary

Mr. Thinley Namgyal Officer, Department of Aide and Debt Management

4. 教育省 : Ministry of Education

Lyonpo Thinley Gyamtsho Minister

Mr. Pema Thinley Secretary General

Mr. Tshewang Tandin Director, Dept. of School Education

Mr. Kinley Dorji Director, Dept. of Youth, Culture and Sports

Ms. Nim Dem Director, Dept. of Adult & Higher Education

Mr. Tenzin Choeda Deputy Secretary, Policy and Planning Div.

Mr. Karma L. Dorji Joint Director, School Planning and Building Div.

Mr. Tashi Tobgye Deputy Secretary, Administration and Finance Div.

Mr. Jambay Wangchuk Planning Officer, Policy and Planning Division

Mr. Singye Namgyal Dorji Planning Officer, Policy and Planning Division

Ms. Thsering Dolkar Planning Officer, Policy and Planning Division

Mr. Kaka Tshering Liason Officer, School Liaison and Coordination
Section, Dept. of School Education

平山 修一 青年海外協力隊シニア隊員 (建築/SPBD 配属)

梅本 剛 青年海外協力隊員 (建築/SPBD 配属)

Mr. Diwakar Lama BOQ Unit, School Planning and Building Div.

5. Kabjisa LSS (Phunakha Dzongkhag)

Mr. Karma Samphel Phunakha Assistant District Education Officer

Mr. Tshering Tobgay Village Head

Mr. Turmey Dukpa Headmaster

6. Khuruthang LSS (Phunakha Dzongkhag)

Mr. Leki Tshering Headmaster

Ms. Lhaki Wangmo Assistant Headmaster

7. Chapcha MSS (Chukha Dzongkhag)

Mr. Tshewang Rinzin Chukha District Education Officer

Ms. Ugyen Delma Headmaster

8. Drukgyel HSS (Paro Dzongkhag)

Mr. Wangchuk Namgyel Paro District Education Officer

Mr. Kinzang Dendup Assistant Principal

9. Chukha HSS (Chukha Dzongkhag)

Mr. Tshewang Rinzin Chukha District Education Officer

Mr. Ugyen Dorji Chukha Assistant District Education Officer

Mr. Dawa Choden Headmaster

10. Dala MSS (Chukha Dzongkhag)

Mr. Karma Tshering Headmaster

11. Lango LSS (Paro Dzongkhag)

Mr. Rizin Dorji Headmaster

Mr. Rinchen Tshering Village Head

12. Bitkha LSS (Paro Dzongkhag)

Mr. Sonam Dorji Headmaster

13. Liaison Office of Denmark

Mr. Torben Bellers Minister Counsellor

Mr. Pem T. Dorji Programme Officer

14. World Bank

Mr. Mark LaPrairie Education Specialist, Human Development Sector,
South Asia Region

15. その他

Mr. Sangay Dorji Headmaster, Meretsemo Community Primary School

Mr. Tshering Chhoden Headmaster, Khasadrapchhu MSS

Mr. Kumar Sharma Construction Development Board (CDB)

Mr. M. N. Damo Daran Chima Transport (運送業者)

Mr. Gopal Thopo Office Assistant, Druck Indo Truck (運送業者)

Mr. Dorjee Namgyel Managing Director, State Trading Corporation of Bhutan
Ltd. (STCB) (資機材業者)

Mr. Ugan Penjor CEO, Yarkay Construction Co. / Yarkay Enterprises
(資機材業者 / 施工業者)

Mr. Sarkar Account Manager, 同上

Mr. Sacha R. Dorji Owner, Rinson Construction (施工業者)

Mr. Pran Raj Gurung Sub-engineer, Dheosum Construction (施工業者)

Mr. Tendin	Operator, Syngye Hollow Block Manufacturing Unit (コンクリートブロック製造)
Mr. Bedh Bahadur Chhetri	Procurement Officer, Karma Steel & Wood Industry (家具製作)
Mr. Prem Pareek	General Manager, Staples Enterprises / Jattu Wood Industries (家具製作)

ブータン国「小中学校建設計画」予備調査 - 収集資料リスト A

番号	資料名	入手先	備考
A-1	Application Form For Japan's Grant Aid General and Fisheries	JICA 本部	コピー
A-2	CAPSD Newsletter	教育省	冊子
A-3	Circular : Additional Incentives for Teachers, RCSC/PA 13/98/09	教育省	コピー
A-4	Country Economic Review: Bhutan (ADB)	JICA 国総研図書館	コピー
A-5	Country Profile 2002: Nepal, Mongolia, Bhutan (EIU)	JICA 国総研図書館	コピー
A-6	Curriculum Implementation Guidelines for Schools in Bhutan	教育省	コピー
A-7	Drukgyel High School Project: Model School	Drukgyel High School	コピー
A-8	Education Development Project: Project Implementation Plan	教育省	本
A-9	Education Sector Strategy: Realizing Vision 2020 Policy and Strategy	教育省	本
A-10	General Statistics 2003	教育省	本
A-11	Gross National Happiness	教育省	本
A-12	Human Resources Development Master Plan (2002-2012)	JICA 本部	コピー
A-13	National Accounts Statistics Report 2001	教育省	本
A-14	National Budget Financial Year 2003-204	教育省	本
A-15	9 th Five-Year Plan Education Sector Implementation Plan (Draft)	JICA 駐在員事務所	コピー
A-16	Ninth Plan Main Document (2002-2007)	JICA 本部	コピー
A-17	Revised Pay Scales 1.7.999	教育省	コピー
A-18	Second Education Project: Progress Report January-November 2003		簡易製本
A-19	Statistical Yearbook of Bhutan 2002	教育省	本
A-20	21 st Education Policy Guidelines & Instructions	JICA 本部	コピー
A-21	22 nd Education Policy Guidelines & Instructions	教育省	本

ブータン国「小中学校建設計画」予備調査 - 収集資料リスト B

番号	資料名	入手先	備考
B-1	SPBD 標準設計図	教育省 SPBD	A3-42 枚
B-2	要請校敷地測量図 (14 校分) (A3 コピー及び CD:AutoCAD データ)	SPBD	A3-14 枚 CD
B-3	SPBD Planner's Guide (標準設計平面図、立面図、参考マスタープラン)	SPBD	コピー
B-4	LGSF 工法設計図面	SPBD	コピー
B-5	Construction Development Board Revision 3 Manual (March 2001)	CDB	本
B-6	Construction Development Board カテゴリー分類変更、登録条件関係書類	CDB	コピー
B-7	施工業者概要 (調査票、5 社回答分)	施工業者	コピー
B-8	Building Code of Bhutan 2003 (Part 1:Structural Design)	NACSQC	本
B-9	Building Code of Bhutan 2003 (Part 2:Building Services)	NACSQC	本
B-10	Specification for Building & Road Works - 2001	NACSQC	本
B-11	Specification for Electrical Works (Internal) - 2001	NACSQC	本
B-12	Bhutan Schedule of Rates - 2001 (Civil)	NACSQC	本
B-13	Bhutan Schedule of Rates - 2001 (Electrical)	NACSQC	本
B-14	Labour & Material Coefficients - 2001 (Civil)	NACSQC	本
B-15	Labour & Material Coefficients - 2001 (Electrical)	NACSQC	本
B-16	Standards for Timber Doors & Windows	NACSQC	本
B-17	School Furniture (標準設計図、製作図)	SPBD	簡易製本
B-18	Contract Agreement, Procurement of School Furniture	SPBD	コピー
B-19	Income Tax Act of the Kingdom of Bhutan 2001	教育省	本
B-20	Rules on the Income Tax Act of the Kingdom of Bhutan 2001	教育省	本
B-21	Sales Tax, Customs and Excise Act of the Kingdom of Bhutan 2000	教育省	本
B-22	Rules on the Sales Tax, Customs and Excise Act of the Kingdom of Bhutan 2000	教育省	本
B-23	ブータン国内 7 地点の気象データ (2000 年、気温・降雨量) (Gedu, Chukha, Betikha, Punakha, Tongsa, Chazam, Autsho)	SPBD	コピー
B-24	Review of Light Gauge Steel Construction for Schools in Bhutan	デンマーク連絡事務所	コピー
B-25	無償資金協力案件調査団用 提出資料集 (教育一般状況、SPBD、建設事情)	SPBD	コピー
B-26	建設資材パンフレット類 (セメント、コンクリートブロック、セメント舗装ブロック、 鉄筋、CGI シート、GRC 製品、木製建具、ブータンボード)	Construction Expo 2003 の展示場	コピー

Secondary Schools Programmed in the 9th FYP by level and Donor

Level		Sl. No.s	Dzongkhag	School			Budget
1	LSS	New	1	1	Chukha	P/ling	New LSS 18.861
2			2	2	Thimphu	Changjiji	New LSS 16.376
3			3	3	Thimphu	Zilukha	New LSS 29.818
4			4	4	Trashiyangtse	Khamdang	New LSS 19.019
5			5	5	Trongsa	Samchoeling	New LSS 19.096
6			6	6	T/yangtse	Pangtokha	New LSS 5.800
8		Upgr	7	1	Dagana	Gesarling	CS LSS 21.954
9		ade	8	2	Mongar	Chali	CS LSS 18.946
10			9	3	P/gatshel	Shumar	CS LSS 12.995
11			10	4	T/gang	Thungkhar	LSS LSS 11.069
12			11	5	T/gang	Uzorong	PS LSS 13.836
13			12	6	T/gang	Phongmey	PS LSS 57.066
14			13	7	Lhuentse	Minjey	PS LSS 40.424
15			14	8	Mongar	Kilikhar	PS LSS 36.080
16			15	9	Zhemgang	Gomphu	PS LSS 43.812
17			16	10	Bumthang	Tang	PS LSS 12.311
18			17	11	Chukha	Bongo	PS LSS 16.501
19			18	12	Chukha	Chungkha	PS LSS 15.591
20			19	13	Chukha	Dungna	PS LSS 17.285
21			20	14	Chukha	Sinchula	PS LSS 16.501
22			21	15	Dagana	Daga	PS LSS 13.874
23			22	16	Lhuentse	Tangmachu	PS LSS 15.184
24			23	17	Mongar	Chaskhar	PS LSS 26.102
25			24	18	S/jongkhar	Daifam	PS LSS 4.392
26			25	19	S/jongkhar	Gomdar	PS LSS 18.875
27			26	20	S/jongkhar	Lauri	PS LSS 2.067
28			27	21	Samtse	Denchukha	PS LSS 4.274
29			28	22	Samtse	Sengdhyen	PS LSS 10.612
30			29	23	Sarpang	Gelephu	PS LSS 3.088
31			30	24	Sarpang	Sarpang	PS LSS 19.367
32			31	25	Chukha	Lochina	CS LSS 11.914
33			32	26	Chukha	Wanakha	CS LSS 11.962
34			33	27	Sarpang	Dekiling	CS LSS 15.257
35			34	28	Tsirang	Tsirangdangra	CS LSS 20.841
36			35	29	Chukha	Kamji	PS LSS 15.180
38			36	30	Lhuentse	Gortsum	PS LSS 6.876
39			37	31	Lhuentse	Zhangkhar	PS LSS 21.421
40			38	32	Mongar	Khengkhar	PS LSS 34.921
41			39	33	Samtse	Chengmari	PS LSS 4.374
42			40	34	Sarpang	Lhamoy Zhingka	PS LSS 11.488
43			41	35	Wangdue	Tencholing	PS LSS 4.469
44			42	36	Zhemgang	Zhemgang	PS LSS 17.041
45			43	37	T/gang	Gongthung	CS LSS 24.639
46			44	38	T/gang	Rungjung	PS LSS 9.987
47		Con	45	1	Chukha	Tsimalakha	LSS LSS 12.151
48		solid	46	2	Punakha	Shengana	LSS LSS 18.835
49		ate	47	3	Thimphu	Changangkha	LSS LSS 14.317
50			48	4	Paro	Drukgyel	LSS LSS 21.650
51			49	5	Wangdue	Samtengang	LSS LSS 16.822
			50	6	Haa	Tsaphel	LSS LSS 61.179

Secondary Schools Programmed in the 9th FYP by level and Donor

Level		Sl. No.s	Dzongkhag	School			Budget	
1	LSS	New	1	1	Chukha	P/ling	New LSS	18.861
2			2	Thimphu	Changjiji	New LSS	16.376	
3			3	Thimphu	Zilukha	New LSS	29.818	
4			4	Trashiyangtse	Khamdang	New LSS	19.019	
5			5	Trongsa	Samchoeling	New LSS	19.096	
6			6	T/yangtse	Pangtokha	New LSS	5.800	
8	Upgr ade	7	1	Dagana	Gesarling	CS LSS	21.954	
9		8	2	Mongar	Chali	CS LSS	18.946	
10		9	3	P/gatshel	Shumar	CS LSS	12.995	
11		10	4	T/gang	Thungkhar	LSS LSS	11.069	
12		11	5	T/gang	Uzorong	PS LSS	13.836	
13		12	6	T/gang	Phongmey	PS LSS	57.066	
14		13	7	Lhuentse	Minjey	PS LSS	40.424	
15		14	8	Mongar	Kilikhar	PS LSS	36.080	
16		15	9	Zhemgang	Gomphu	PS LSS	43.812	
17		16	10	Bumthang	Tang	PS LSS	12.311	
18		17	11	Chukha	Bongo	PS LSS	16.501	
19		18	12	Chukha	Chungkha	PS LSS	15.591	
20		19	13	Chukha	Dungna	PS LSS	17.285	
21		20	14	Chukha	Sinchula	PS LSS	16.501	
22		21	15	Dagana	Daga	PS LSS	13.874	
23		22	16	Lhuentse	Tangmachu	PS LSS	15.184	
24		23	17	Mongar	Chaskhar	PS LSS	26.102	
25		24	18	S/jongkhar	Daifam	PS LSS	4.392	
26		25	19	S/jongkhar	Gomdar	PS LSS	18.875	
27		26	20	S/jongkhar	Lauri	PS LSS	2.067	
28		27	21	Samtse	Denchukha	PS LSS	4.274	
29		28	22	Samtse	Sengdhyen	PS LSS	10.612	
30		29	23	Sarpang	Gelephu	PS LSS	3.088	
31		30	24	Sarpang	Sarpang	PS LSS	19.367	
32		31	25	Chukha	Lochina	CS LSS	11.914	
33		32	26	Chukha	Wanakha	CS LSS	11.962	
34		33	27	Sarpang	Dekiling	CS LSS	15.257	
35		34	28	Tsirang	Tsirangdangra	CS LSS	20.841	
36		35	29	Chukha	Kamji	PS LSS	15.180	
37		36	30	Lhuentse	Gortsum	PS LSS	6.876	
38		37	31	Lhuentse	Zhangkhar	PS LSS	21.421	
39		38	32	Mongar	Khengkhar	PS LSS	34.921	
40		39	33	Samtse	Chengmari	PS LSS	4.374	
41		40	34	Sarpang	Lhamoy Zhingka	PS LSS	11.488	
42		41	35	Wangdue	Tencholing	PS LSS	4.469	
43		42	36	Zhemgang	Zhemgang	PS LSS	17.041	
44		43	37	T/gang	Gongthung	CS LSS	24.639	
45		44	38	T/gang	Rungjung	PS LSS	9.987	
46	Con solid ate	45	1	Chukha	Tsimalakha	LSS LSS	12.151	
47		46	2	Punakha	Shengana	LSS LSS	18.835	
48		47	3	Thimphu	Changangkha	LSS LSS	14.317	
49		48	4	Paro	Drukgyel	LSS LSS	21.650	
50		49	5	Wangdue	Samtengang	LSS LSS	16.822	
51		50	6	Haa	Tsaphel	LSS LSS	61.179	

Level		Sl. No.s	Dzongkhag	School			Budget	
18		102	6	Paro	Lango	LSS	MSS	33.642
19	MSS	103	7	Paro	Bithekha	LSS	MSS	22.797
20	Upgr	104	8	Thimphu	Genekha	PS	MSS	29.835
	ade	105	9	Lhuentse	Thimiyong	PS	MSS	40.423
21		106	10	Dagana	Dagapela	CS	MSS	45.212
22		107	11	Sarpang	Pelrithang	CS	MSS	53.732
23		108	12	Chukha	P/ling (BOD)	LSS	MSS	18.861
24		109	13	Mongar	Dremetse	LSS	MSS	41.024
25		110	14	Mongar	Yadi	LSS	MSS	64.524
26		111	15	Samtse	Tendu	LSS	MSS	40.526
27		112	16	Sarpang	Norbuling	LSS	MSS	48.132
28		113	17	Thimphu	Kuschugchen	CS	MSS	32.381
29		114	18	Chukha	Pasakha	LSS	MSS	19.872
30		115	19	S/jongkhar	Dechhenling	LSS	MSS	18.482
31		116	20	Samtse	Dorokha	LSS	MSS	18.884
32		117	21	Mongar	Mongar	LSS	MSS	24.476
33		118	22	P/gatshel	Tsebar	LSS	MSS	32.932
34		119	23	Punakha	Jibjokha	PS	MSS	10.414
35		120	24	Punakha	Khuruthang	LSS	MSS	7.842
36		121	25	Trongsa	Tsangkha	LSS	MSS	3.243
37		122	26	P/gatshel	Yurung	LSS	MSS	39.271
38		123	27	S/jongkhar	Minjiwoong	LSS	MSS	20.557
83		124	28	Thimphu	Dechenchholing	LSS	MSS	12.526
39	Con	125	1	Chukha	Dala	MSS	MSS	26.004
40	solid	126	2	Samtse	Gomtu	MSS	MSS	6.111
41	ate	127	3	T/yangtse	Tsenkharla	MSS	MSS	15.082
42		128	4	Thimphu	Thinleygang	MSS	MSS	22.402
44		129	5	T/gang	Trashigang	MSS	MSS	46.198
45		130	6	Thimphu	Khasadrapchu	MSS	MSS	47.826
46		131	7	Thimphu	Lungtenzampa	MSS	MSS	20.009
47		132	8	Zhemgang	Yebilaptsa	MSS	MSS	15.902
48		133	9	Bumthang	Chhumme	MSS	MSS	0.650
49		134	10	P/gatshel	P/Gatshel	MSS	MSS	15.898
50		135	11	Trongsa	Trongsa	MSS	MSS	13.943
51		136	12	Chukha	Chapcha	MSS	MSS	18.092
52		137	13	Dagana	Daga	MSS	MSS	16.400
53		138	14	Lhuentse	Phuyum	MSS	MSS	7.629
54		139	15	Paro	Shaba	MSS	MSS	9.098
55		140	16	Wangdue	Bajo	MSS	MSS	0.646
1	HSS	141	1	Gasa	Bjishong	New	HSS	72.670
2		142	2	Samtse	Ghumauney	New	HSS	55.211
3		143	3	Tsirang	Tsirang	New	HSS	61.758
4		144	4	Mongar	Gyelposhing	New	HSS	49.527
5		145	5	Thimphu	Lobesa	New	HSS	54.913
6		146	6	Zhemgang	Buli	New	HSS	62.112
7		147	7	Paro	Shari	New	HSS	47.654
8		148	8	Paro	Gattana	HSS	HSS	178.928
10	Upgr	149	1	Lhuentse	Tangmachu	MSS	HSS	31.488
11	ade	150	2	Chukha	Phuentsholing	MSS	HSS	15.847
		151	3	Mongar	Mongar	MSS	HSS	35.197

Level		Sl. No.s	Dzongkhag	School			Budget	
43		152	4	Samtse	Samtse	MSS	HSS	44.484
12		153	5	Sarpang	Gelephu	MSS	HSS	34.927
13	HSS	154	6	Dagana	Durjeygang	LSS	HSS	5.812
14	Upgr	155	7	S/jongkhar	S/jongkhar	MSS	HSS	9.850
15	ade	156	8	Chukha	Gedu	MSS	HSS	5.715
16		157	9	Chukha	Wangchu	MSS	HSS	4.835
17		158	10	Thimphu	Motithang	MSS	HSS	13.839
18		159	11	Sarpang	Sarpang	MSS	HSS	19.367
19	Con	160	1	Bumthang	Jakar	HSS	HSS	15.424
20	solid	161	2	Chukha	Chukha	HSS	HSS	35.784
21	ate	162	3	T/gang	Wamrong	HSS	HSS	21.425
22		163	4	Haa	Ugyen Dorji	HSS	HSS	4.519
23		164	5	P/gatshel	Nangkhon	HSS	HSS	19.532
24		165	6	Paro	Drukgyel	HSS	HSS	8.661
25		166	7	Punakha	Punakha	HSS	HSS	16.822
26		167	8	T/gang	Jigme Sherubling	HSS	HSS	12.660
27		168	9	T/gang	Ranjung	HSS	HSS	9.494
28		169	10	T/yangtse	Bayling	HSS	HSS	5.732
29		170	11	Thimphu	Yangchenphug	HSS	HSS	16.519
30		171	12	Trongsa	Takse**	HSS	HSS	7.100
31		172	13	Tsirang	Damphu	HSS	HSS	7.570
32		173	14	Wangdue	Gaselo	HSS	HSS	0.025
33		174	15	Zhemgang	Zhemgang	HSS	HSS	26.538
		174						4162.582

Annex 2 List of Requested Schools

A.2 ミニッツAnnex2 修正版

	School	Dzongkhag	Level		Classes		Students		Boarders		Day/ Boarding	Status Change	Type of Construction	Existing Cl.rooms	Demolish	Reconst.	Add. Const.	Const. Requested to Japan	Total		
			Now	Planned	Now	Planned	Now	Planned	Now	Planned											
1	Phobjikha	Wangdue	New	MSS	I-VI	PP-X	466	720	0	256	Boarding	Upgrade	Relocation/Ne w Const.	0	0	0	20	20	20		
2	Genekha	Thimphu	LSS	MSS	PP-VII	VII-X	146	720	53	256	Boarding	Upgrade	Add. Const.	8	0	0	12	12	20		
3	Kabjisa	Punakha	LSS	MSS	PP-VII	PP-X	555	560	80	0	Day	Upgrade	Reconst. & Add. Const.	17	14	14	6	20	23		
4	Bitekha	Paro	LSS	MSS	PP-VIII	PP-X	387	704	57	256	Boarding	Upgrade	Add. Const.n(9-10) only	10	9	9	10	19	20		
5	Dala	Chukha	MSS	MSS	PP-X	PP-X	1283	936	139	192	Boarding	No change	Reconst. & Add. Const.	23	17	17	3	20	26		
6	Tangsibi	Trongsa	New	MSS	None	VII-X	0	648	0	384	Boarding	New Establishment	New Const.	0	0	0	18	18	18		
7	Bartsham	Trasigang	LSS	MSS	P-VII	PP-X	367	871	0	256	Boarding	Upgrade	Recon. & Add. Const.	18	0	0	6	6	24		
8	Lango	Paro	LSS	MSS	P-VIII	PP-X	732	994	0	0	Day	Upgrade	Recon. & Add. Const.	18	12	12	6	18	24		
9	Kanglung	Trasigang	New	MSS	None	VII-X	0	720	0	0	Day	New Establishment	Add. Const.	8	0	0	12	12	20		
10	Thimyong	Lhuentse	PS	MSS	PP-III	PP-X	131	720	0	256	Boarding	Upgrade	Add.l Const. (4-10) only	6	0	0	14	14	20		
11	Buli	Zhemgang	New	HSS	None	VII-XII	0	720	0	384	Boarding	New Establishment	New Const.	0	0	0	20	20	20		
12	Tsirang	Tsirang	New	HSS	None	VII-XII	0	720	0	384	Boarding	New Establishment	New Const.	0	0	0	20	20	20		
13	Chukha	Chukha	HSS	HSS	IX-XII	IX-XII	570	756	372	442	Boarding	No change	Recon. & Add. Const.	20	5	5	1	6	21		
14	Gyelposhing	Mongar	New	HSS	None	IX-XII	0	720	0	192	Boarding	New Establishment	New Const.	6	0	0	14	14	20		
15	Autsho	Lhuentse	CPS	MSS	PP-VI	PP-X	159	504	0	256	Boarding	Upgrade	Reconst. & Add. Const.	12	6	6	8	14	20		
													Total	146	63	63	170	233	316		

Note: The present class coverage comes from Page 64-72 of the General Statistics 2003 issued by MOE.

* Kabjisa LSS will become a day school.

** The level of current Kanglung LSS (PP-8) will be reduced to Kanglung PS (PP-6) and new Kanglung MSS (7-10) will be created.

***The level of current Gyelposhing HSS (7-12) will be reduced to Gyelposhing LSS (PP-8) and new Gyelposhing HSS (9-12) will be created.

Annex 3 List of Requested Components

School Name Components	Phobjikha LSS		Genekha LSS		Kabjisa LSS		Bitekha LSS		Dala MSS		Tangsibi		Bartsham LSS		Lango LSS	
	No.	Priority	No.	Priority	No.	Priority	No.	Priority	No.	Priority	No.	Priority	No.	Priority	No.	Priority
Class Rooms (6Units Block)	3	0	1	0	3	0		0	3	0	2	0	1	0	2	0
Class Rooms (4Units Block)	-	0	1	0	-	0	3	0	-	0	1	0		0	1	0
Aqua Privy Toilets	2	1	2	1	2	1	2	1	2	1	2	1	2	1	2	1
Science Laboratory	1	1	1	1	1	1	1	1	1	1	1	1	1	1	1	1
Administrative Block	1	2	1	2	1	2	1	2	1	2	1	1	1	2	1	2
Multipurpose Hall	1	2	1	2	1	3	1	2	1	2	1	2	1	2	1	3
Hostel (64 beds)	4	1	4	1	-	-	4	1	-	-	-	-	4	1	-	-
Hostel (96 beds)	-	-	-	-	-	-	-	-	2	1	4	1	-	-	-	-
Hostel Toilet(Boys & Girls)	4	1	4	1	-	-	2	1	2	1	4	1	4	1	-	-
Kitchen & Storage	1	1	1	1	-	-	1	1	1	1	1	1	1	1	-	-
Warden's & Matron's quarter	2	1	2	1	-	-	2	1	2	1	2	1	2	1	-	-
Pricipal's quarter	1	1	1	1	1	1	1	1	-	-	1	1	1	1	-	-
Staff quarter (4Units)	2	2	2	2	2	2	1	2	1	3	3	2	-	-	-	-
Football Field	1	2	1	2	1	2	1	2	1	2	1	2	1	2	1	2
Basketball Court	1	2	1	2	1	2	1	2	1	2	1	2	1	2	1	3
Educational Furniture	*	1	*	1	*	1	*	1	*	1	*	1	*	1	*	1
Laboratory Equipment	○	4	○	4	○	4	○	4	○	4	○	4	○	4	○	4
Office Equipment	○	4	○	4	○	4	○	4	○	4	○	4	○	4	○	4
Computers & Peripherals	20	4	20	4	20	4	20	4	20	4	20	4	20	4	20	4
School Bus	-		-		-		-		-		1	4	1	4	-	
Planned Status of the school	MSS		MSS		MSS		MSS		MSS		MSS		MSS		MSS	

- ① School name shows the current status of the school. Schools without school status are currently non-existent schools.
- ② Priority order is set for the components without classrooms by the Bhutanese side. Classrooms are the highest priority among all of the components.
- ③ Science Laboratory for the MSS and HSS consists of 3 laboratories for physics, chemistry, biology, a library and a computer room according to the SPBD standard designs.
- ④ Administrative block consists of a teachers room, headmaster's room and 2 classrooms according to the SPBD standard design.
- ⑤ Since Dala MSS and Kanglung MSS currently has a general science laboratory and a library, the requested science laboratory only consists of 3 rooms.
- ⑥ *=The amount of furniture will be decided according to the whatever is decided to be the building components.
- ⑦ ○=1 Unit

Annex-3 List of Requested Components

A.3 ミニッツAnnex 3 修正版

School Name Components	Kanglung		Thimyong CPS		Buli		Tsirang		Chukha HSS		Gyeposhing		Autsho CPS	
	No.	Priority	No.	Priority	No.	Priority	No.	Priority	No.	Priority	No.	Priority	No.	Priority
Class Rooms (6Units Block)	2	0	2	0	3	0	3	0	-	0	2	0	2	0
Class Rooms (4Units Block)	-	0	-	0	-	0	-	0	1	0	-	0	-	0
Aqua Privy Toilets	2	1	2	1	2	1	2	1	2	1	-	-	2	1
Science Laboratory	1	1	1	1	1	1	1	1	1	1	-	-	1	1
Administrative Block	-	-	1	2	1	2	1	1	-	-	1	2	1	2
Multipurpose Hall	1	3	1	2	1	2	1	2	1	2	1	2	1	2
Hostel (64 beds)	-	-	4	1	-	-	-	-	-	-	-	-	4	1
Hostel (96 beds)	-	-	-	-	4	1	4	1	2	1	2	1	-	-
Hostel Toilet(Boys & Girls)	-	-	2	1	4	1	4	1	2	1	2	1	4	1
Kitchen & Storage	-	-	-	-	1	1	1	1	1	1	1	1	1	1
Warden's & Matron's quarter	-	-	2	1	2	1	2	1	-	-	2	1	2	1
Pricipal's quarter	1	1	1	1	1	1	1	1	-	-	1	1	1	1
Staff quarter (4Units)	3	2	2	1	3	1	3	2	-	-	2	2	2	1
Football Field	1	2	1	2	1	2	1	2	1	2	1	2	1	2
Basketball Court	1	1	1	2	1	2	1	2	1	2	1	2	1	2
Educational Furniture	*	1	*	1	*	1	*	1	*	1	*	1	*	1
Laboratory Equipment	○	4	○	4	○	4	○	4	○	4	○	4	○	4
Office Equipment	○	4	○	4	○	4	○	4	○	4	○	4	○	4
Computers & Peripherals	20	4	20	4	30	4	30	4	30	4	30	4	30	4
School Bus	-	-	1	4	1	4	1	4	-	-	-	-	1	4
	MSS		MSS		HSS		HSS		HSS		HSS		MSS	

- ① School name shows the current status of the school. Schools without school status are currently non-existent schools.
- ② Priority order is set for the components without classrooms by the Bhutanese side. Classrooms are the highest priority among
- ③ Science Laboratory for the MSS and HSS consists of 3 laboratories for physics, chemistry, biology, a library and a computer room according to the SPBD standard designs.
- ④ Administrative block consists of a staff's office, headmaster's office and 2 classrooms according to the SPBD standard design.
- ⑤ Since Dala MSS and Kanglung MSS currently has a general science laboratory and a library, the requested science laboratory only consists of 3 rooms.
- ⑥ *=The amount of furniture will be decided according to the whatever is decided to be the building components.
- ⑦ ○=1 Unit