

# QUESTIONNAIRE

THE STUDY ON EMPOWERMENT PLAN  
FOR  
REGIONAL WATER RESOURCES DEVELOPMENT  
AND MANAGEMENT SYSTEM  
IN THE REPUBLIC OF INDONESIA



DIRECTORATE GENERAL OF WATER RESOURCES  
MINISTRY OF SETTLEMENT AND REGIONAL INFRASTRUCTURE  
REPUBLIC OF INDONESIA

5011.01

# QUESTIONNAIRE

**The Study on Empowerment Plan  
For Regional Water Resources Development and Management System  
In the Republic of Indonesia**

**I. Purpose of the Preliminary Study**

**1. Target area is Jeneberang River Basin and if the objective of the study is empowerment of the public corporation:**

We confirm that the study area is the Jeneberang River basin, and the objective of the study is empowerment of the public corporation. However, this clarification shall refer to the document: Application form for Japan's Development Study for the Study on Empowerment Plan for Regional Water Resources Development and Management System in the Republic of Indonesia submitted previously.

There is an effort from the Government of Indonesia to found the Public Corporation for Jeneberang River Basin currently. We expect that this effort will soon be accomplished. Due to this process, the study will be very important to empower the mentioned public corporation.

Learning from the experience in the process for establishing the public corporation, the study shall conduct appropriate trial plans or studies together with the regional governments concerned in the Jeneberang River Basin. Before starting the trials, the definition of authority, duties and responsibilities of respective organizations for the water resources management shall be clarified based on the outputs from the Component 1; Preparation of New Institutional Instruments and Provision of Capacity Development, and Task 2.1. Assistance to deploy a functional public corporation and related organizations for river basin and quality management based on the new framework. The main player of the assigned study material (Implementation Program, F/S, Management Plan, etc) should also be determined in advance. One (or more) of the trial plan or study shall be assigned to the staff member concerned depending on the prevailing local conditions. The assigned trial plan or study shall be handled as the key study material designed for the experience-oriented learning approach including OJT. Participatory approach involved in the staff of the regional governments and main stakeholders shall be deployed in the study component, in accordance with Task 2-2; Conduct of Trial Plans and Studies, as follows:

- 1) To formulate the implementation program based on the latest Master Plan on Water Resources Development of the Jeneberang River Basin through public-private participatory approach.
- 2) To formulate feasibility study on the high priority projects identified in the Implementation Program.
- 3) To assist DGWR in establishing the public corporation to conduct river basin management, including operation and maintenance of water resources

facilities, water quality monitoring, and collection of water user fee, etc. in accordance with the task and responsibilities.

2. **Demarcation of the project contents between this study and WISMP and setup the cooperative relationship between both projects:**  
To be answered by Jakarta.

## II. Questionnaire:

### 1. Counterpart Organization or Agency of the Project:

- 1) The counterpart organization is Jeneberang River Basin Development Project (JRBDP). The organization structure is attached (Attachment 1)
- 2) The department of the Central Government is Department of Settlement and Regional Infrastructure, Directorate General of Water Resources (DGWR). JRBDP is directly responsible to this DGWR. The communication arranged special for this assignment is through Directorate of Management of Water Resources, while the established daily communication concerning routine activities of JRBDP is through Directorate of Water Resources of Eastern Region.

In the regional government, Government of South Sulawesi Province, the department responsible for water resources is Provincial Service of Water Resources Management (PSWRM). In implementing programs and activities, JRBDP shall consult and coordinate with the PSWRM. These relationships are depicted in the chart attached as Attachment 2.

### 2. The Organization Related to Project:

- 1) The list of the organizations related to the planning, implementation, operation, management, and maintenance of the Jeneberang River Basin:
  - National Level:
    - a) Directorate General of Water Resources (DGWR).
    - b) Directorate of Technical Guidance of Water Resources (DTGWR).
    - c) Directorate of Water Resources Management (DWRM).
    - d) Directorate of Water Resources of Eastern Region (DWRER).
  - Provincial Level:
    - a) Provincial Service of Water Resources Management (PSWRM).
    - b) Sub service for Technical Guidance.
    - c) Sub service for Beneficial Guidance.
    - d) Sub service for River, Lakes, and Reservoir.
    - e) Jeneberang River Basin Technical Implementation Unit (*Balai UPTD*).
    - f) Provincial Committee for Water Allocation (PTPA).
  - Regency Level:
    - a) Regency Service for Water Resources.
  - River Basin Level:
    - a) It should be Committee for Implementation of Water Allocation (PPTPA), which is so far not founded yet.

- NGO Level:
  - a) YP2D.
  - b) YAPDAMDES.
  - c) Some NGOs to be named later.
  
- 2) The list of the organizations of water supply and users in the Jeneberang River Basin:
  - a) Regency Enterprise for Water Supply (PDAM).
  - b) So far there is no drinking or domestic water supply user organization in the study area.
  
- 3) Explanation and figure of the relationship among the above organization:
  - a) to be clarified.
  
- 4) The general information of the each organization:
  - Projects implemented within the JRBDP up to 2001.
    - a) Jeneberang Water Resources Conservation Project (Proyek PKSA Jeneberang).
    - b) Jeneberang Raw Water Project.
    - c) Bili-bili Dam Development Project.

Projects implemented within the JRBDP in 2002

- a) Jeneberang Water Resources Conservation Project.
- b) Jeneberang Raw Water Project.
- c) Flood Mitigation and Coastal Development Project

- 5) Questionnaire especially to the following organizations:

- DGWR

The present situation of the progress of the decentralization of the authority in the water resources sector.

To be answered by Jakarta

Clarifying the organization responsible to the study.

The implementing agency is DGWR, through DWRM. The Counterpart organization is JRBDP coordinating with related and concerned provincial and regency and city (of Makassar) service offices. There shall be steering committee or joint coordinating committee in the central level to coordinate all concerned parties related to the study, of the central, provincial, regency and city level. Further clarification and explanation is to be provided by Jakarta.

- South Sulawesi Propince:
  - Functional role of the Province in the Study.
    - To be clarified later.
- City/Regency:
  - To be clarified later

- Public Corporation:  
Relationship with Induk PWS Jeneberang (JRBDP)  
JRBDP is a body responsible for the operation and maintenance of the infrastructure in the Jeneberang River Basin. The public corporation being established will take over some responsibilities being held by JRBDP, especially in operation and maintenance of the infrastructure. Remaining activities will still be under the JRBDP. This needs coordination in determining the activities to be done by each party and the financial resources for implementing the activities.

### III. The Projects Related to the Study

- 1) There has been an agreement with the Provincial and Regional Government concerned, on the need for a public corporation to be established for the operation and maintenance of Jeneberang Dam and other infrastructure in the river basin. However, as of this March 2003, there is still requirement for a discussion whether central government owned enterprise or provincial and reGENCY owned government enterprise are the options. We expect that this can be solved before end of June 2003.
- 2) In two river basins; Brantas River and Citarum River, public corporations have been well established; Perum Jasa Tirta (PJT) I and PJT II respectively. The public corporation of one large river basin in Java covering two provinces, Bengawan Solo River, has been attached to PJT I in the year 2001. In other two river basins, Serayu-Bogowonto Rivers and Jratunseluna Rivers, the Central Java Provincial Government has submitted the approval for further process of establishment of the central government owned enterprise for the public corporation.
- 3) The followings are projects, executed in JRBDP, *Proyek Induk Wilayah Sungai Jeneberang*, up to Budget year 2001. The name of each Project shows the contents of what were executed. In 2002, only minor works were executed, comprising minor development and maintenance of conservation activities, and raw water development facilities, and flood mitigation activities. The future activities will look similar to the current projects being executed.
  - The cooperation organization for the development is JICA and JBIC of Japan. LOAN and GRANT Project:
    - a) JICA (GRANT):
      - ✓ (1979 – 1980), Feasibility Study on Jeneberang River Basin Flood Control Project.
      - ✓ (1981 – 1982), Feasibility Study on Jeneberang River Flood Control Phase II.
    - b) JBIC (LOAN):
      - ✓ IP-283 (1986 – 1993), Lower Jeneberang Urgent Flood Control Project (J ¥ 6 Billion).
      - ✓ IP-359 (1990 – 1999), Bili-Bili Multipurpose Dam Project Phase 1 (J ¥ 6,6 Billion).

- ✓ IP-390 (1992 – 2001), Bili-Bili Multipurpose Dam Project Phase II (J ¥ 20 Billion).
- ✓ IP-421 (1994 – 2001), Bili-Bili Multipurpose Dam Project Phase III (J ¥ 3,5 Billion).
- ✓ IP-464 (1996 – 2004), Multipurpose Dam Hydro-electric Power Plans Project (J ¥ 2 Billion).
- ✓ IP-479 (1996 – 2003), Bili-Bili Irrigation Project (J ¥ 5,4 Billion).

**IV. Other Donor Assistance Related to the Study**

To be answered by Jakarta.

**V. Law (about the water organization, water management planning, water right and water user's organization)**

- 1) Summary of law, regulation, decree and guideline of water resources sector in Indonesia:
  - Law no. 11 year 1974 on Watering (?). (*Undang-undang Nomor: 11 tahun 1974 tentang Pengairan*).
  - Government Regulation no. 22 on Water Allocation. (*Peraturan Pemerintah Nomor: 22 tahun 1982 tentang Tata Pengaturan Air*).
  - Government Regulation no 35 year 1991 on River (*Peraturan Pemerintah Nomor: 35 tahun 1991 tentang Sungai*).
  - Government Regulation no 77 year 2001 on Irrigation (*Peraturan Pemerintah Nomor: 77 tahun 2001 tentang Irigasi*).
  - Government Regulation no. 123 year 2001 on Coordination Team for Water Resources Management (*Peraturan Pemerintah Nomor 123 tahun 2001 tentang Tim Koordinasi Pengelolaan Sumber Daya Air*).
- 2) Summary of law, regulation, decree and guideline of water resources sector in Propinche:
  - Governor of South Sulawesi Province Decree number 35 year 2002 on the Formation of the Committee for Water Allocation in South Sulawesi Province. (*Keputusan Gubernur Sulawesi Selatan Nomor: 35 tahun 2002 tentang Pembentukan Panitia Tata Pengaturan Air Propinsi Sulawesi Selatan (PPTPA)*).

**VI. Information on the Present Condition of the Jeneberang River Basin**

- 1) Latest topographic map and administrative map, (available)
- 2) Existing water right, ( not available).
- 3) Existing infrastructures such as dam, weir, drainage etc (available).
- 4) The present situation of the participation of the local residents to the river basin management, is not in existence so far.
- 5) Collection of the consumption fee of the water, not in existence up to now.

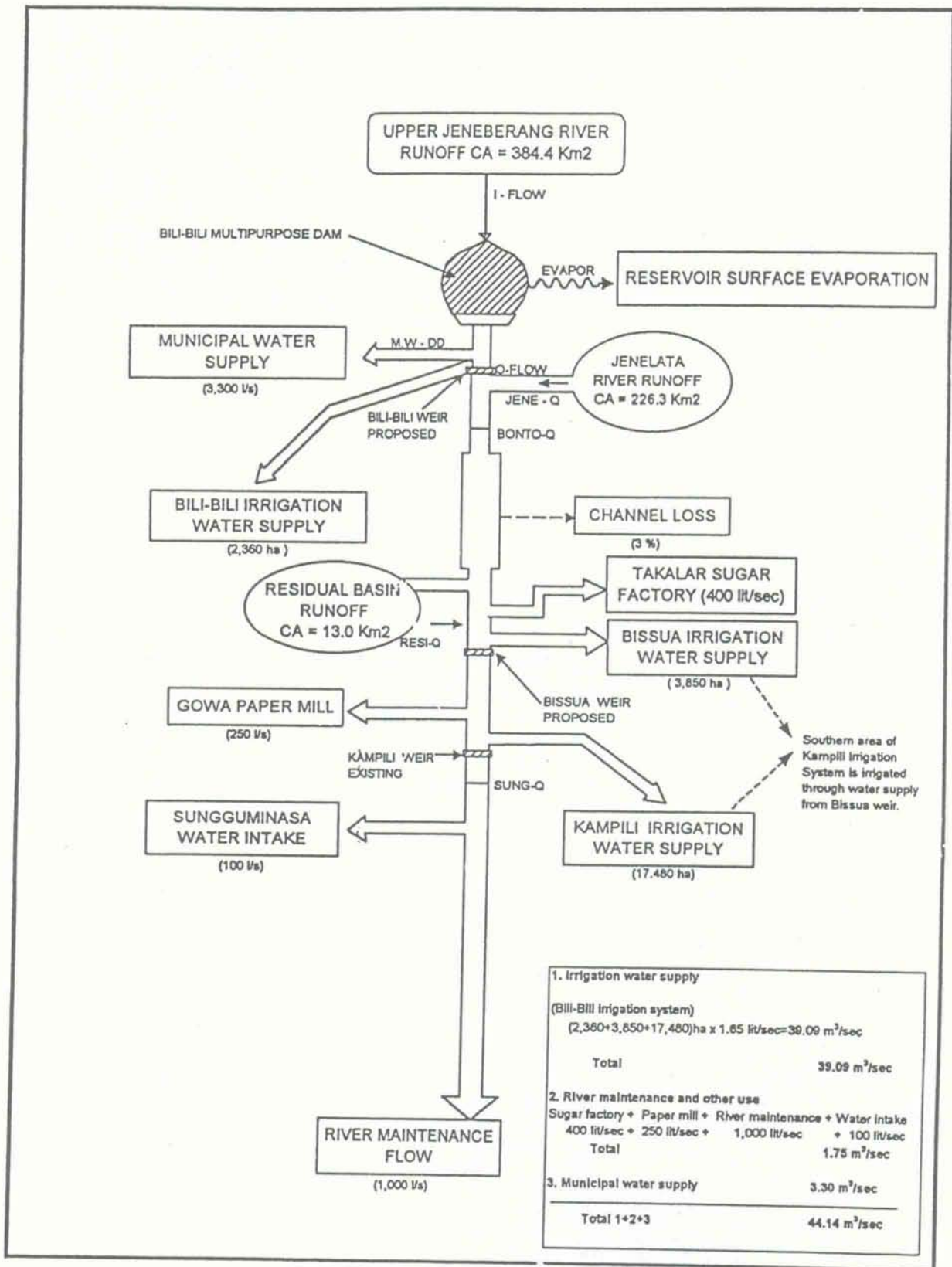
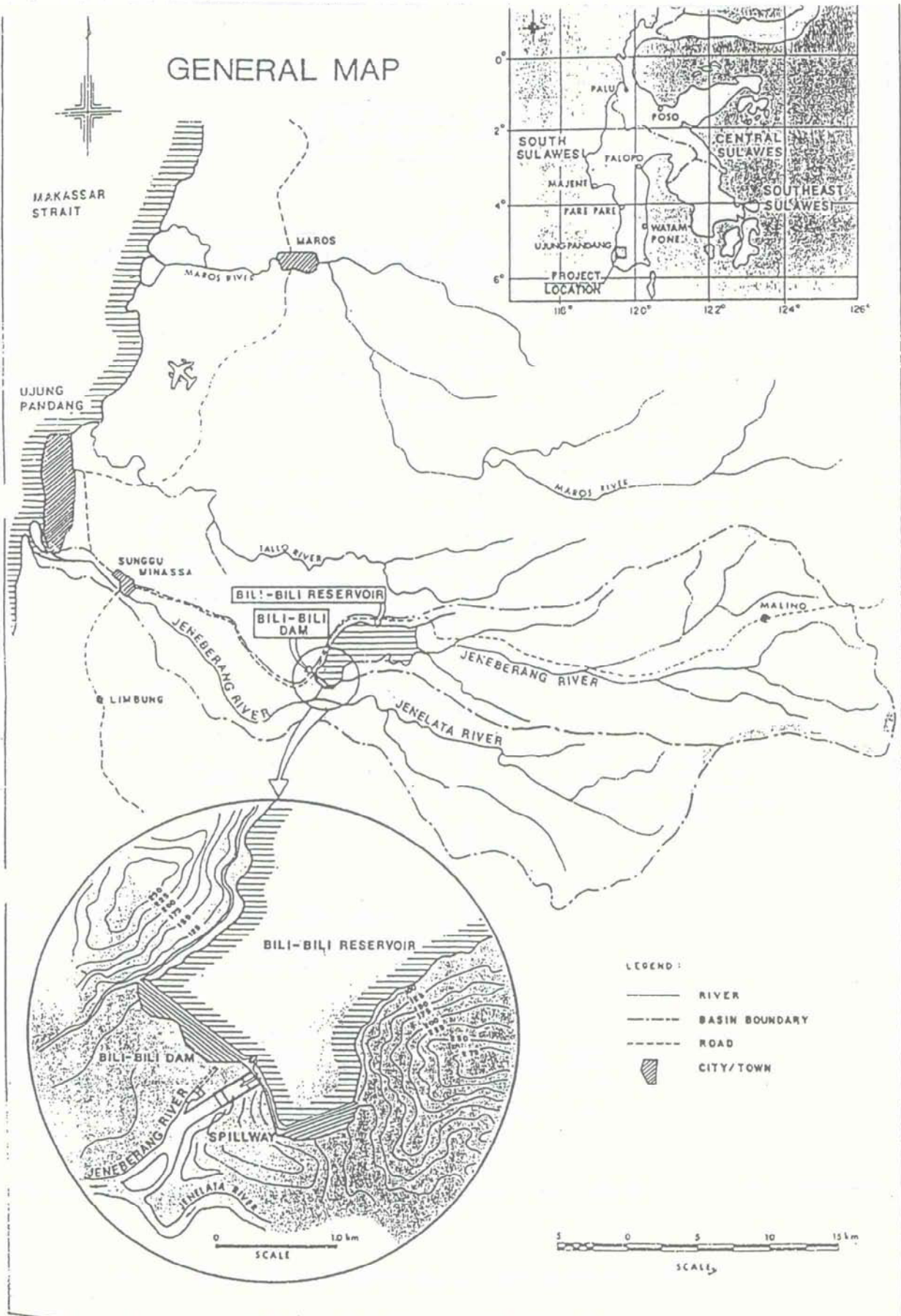


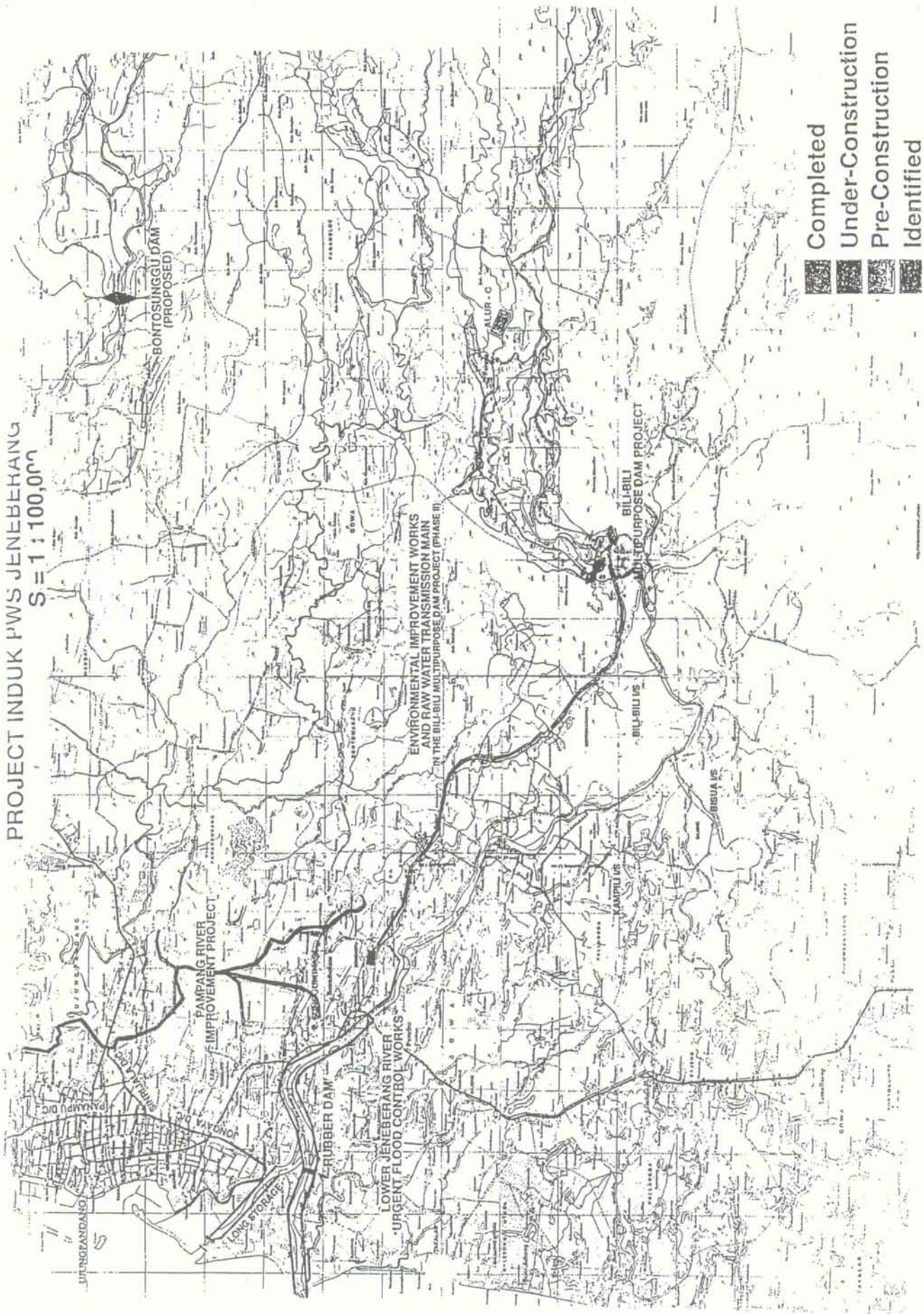
Fig. 4.2.4-1 Diversion Water Requirement for Water Balance Study ( 1 )

# GENERAL MAP

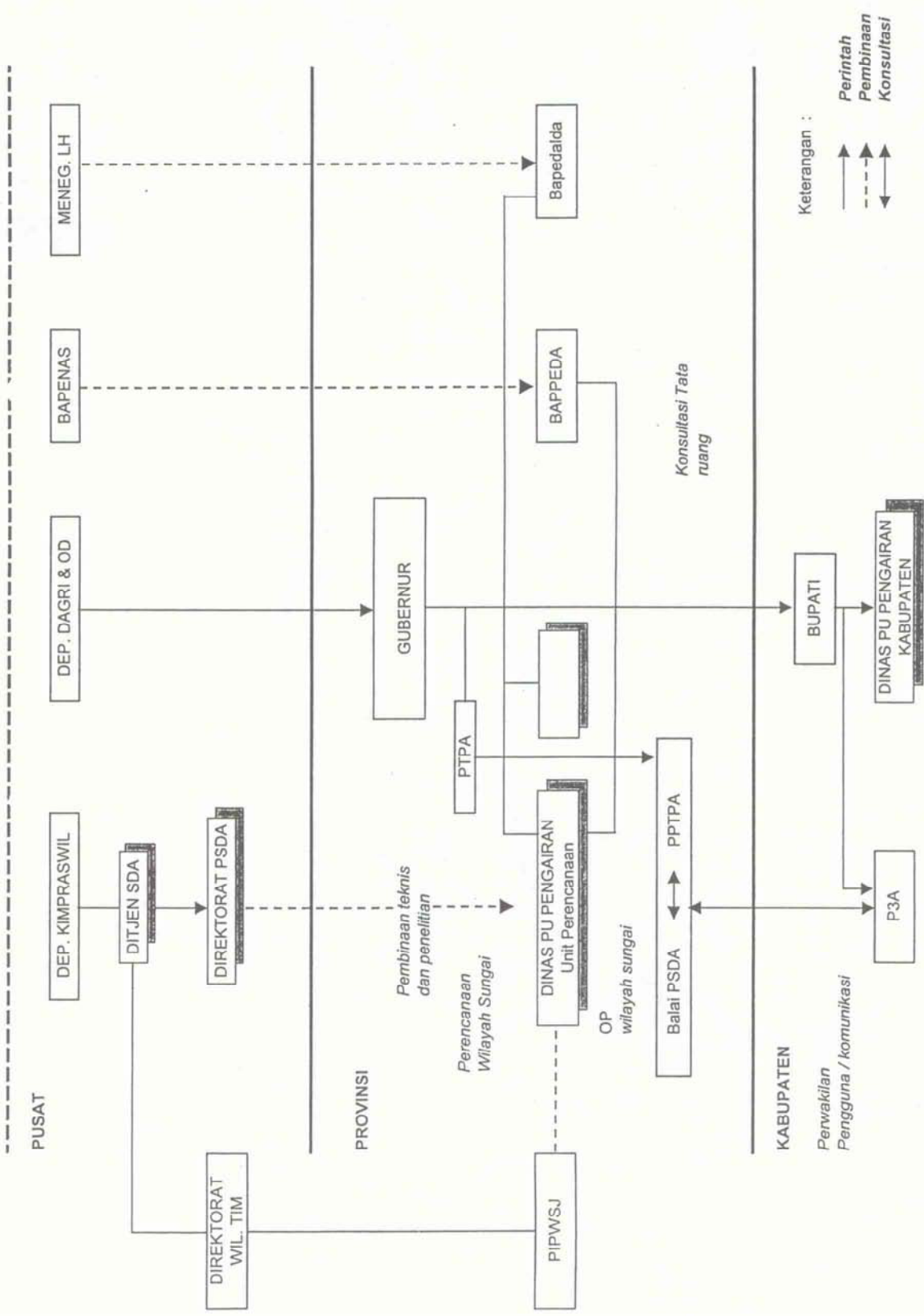




PROJECT INDUK P'WS JENEBERANG  
 S = 1 : 100,000

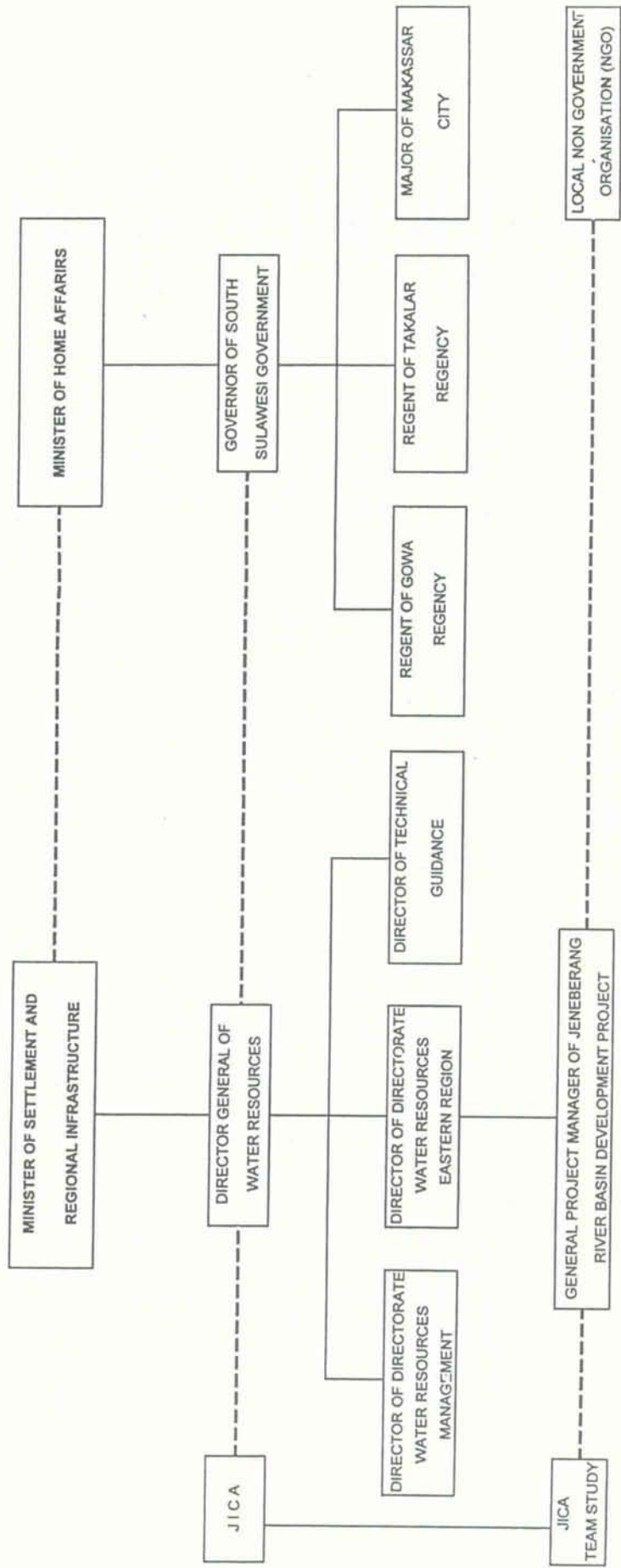


- Completed
- Under-Construction
- Pre-Construction
- Identified



Keterlibatan pemerintah dalam perencanaan wilayah sungai

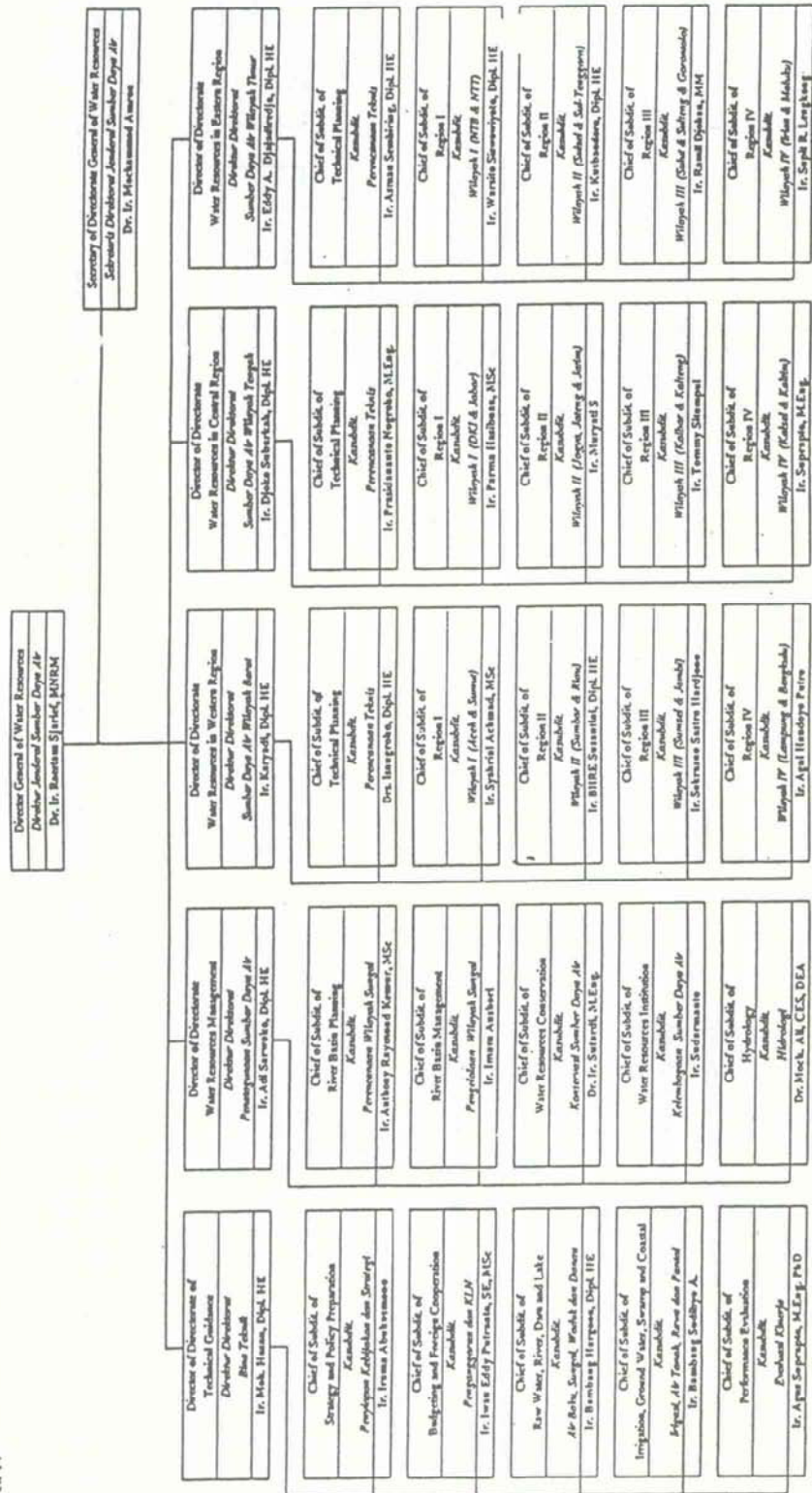
ORGANISATION CHART OF JENEBERANG RIVER BASIN DEVELOPMENT PROJECT



— : COMAND LINE

- - - : COORDINATION LINE

Organizational Chart of Directorate General of Water Resources  
 Struktur Organisasi Direktorat Jenderal Sumber Daya Air  
 DITjen-IV



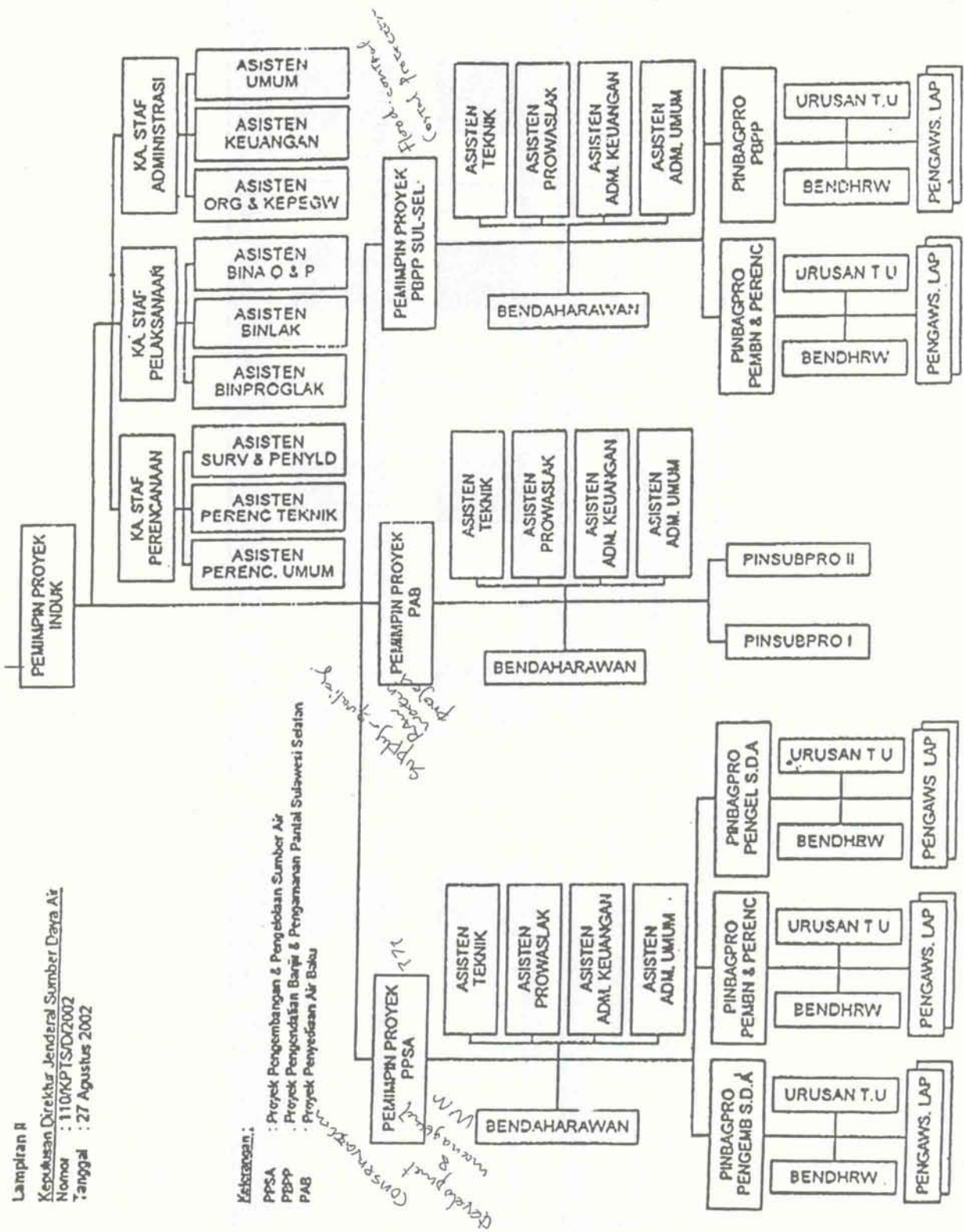
**STRUKTUR ORGANISASI  
PROYEK INDUK PENGEMBANGAN WILAYAH SUNGAI  
JENEBERANG**

Lampiran II

Kepuasan Direktur Jendral Sumber Daya Air  
Nomor : 110/KPTS/DJ/2002  
Tanggal : 27 Agustus 2002

**Keterangan:**

- PPSA : Proyek Pengembangan & Pengelolaan Sumber Air
- PBPP : Proyek Pengendalian Banjir & Pengamanan Pantai Sulawesi Selatan
- PAB : Proyek Penyediaan Air Baku





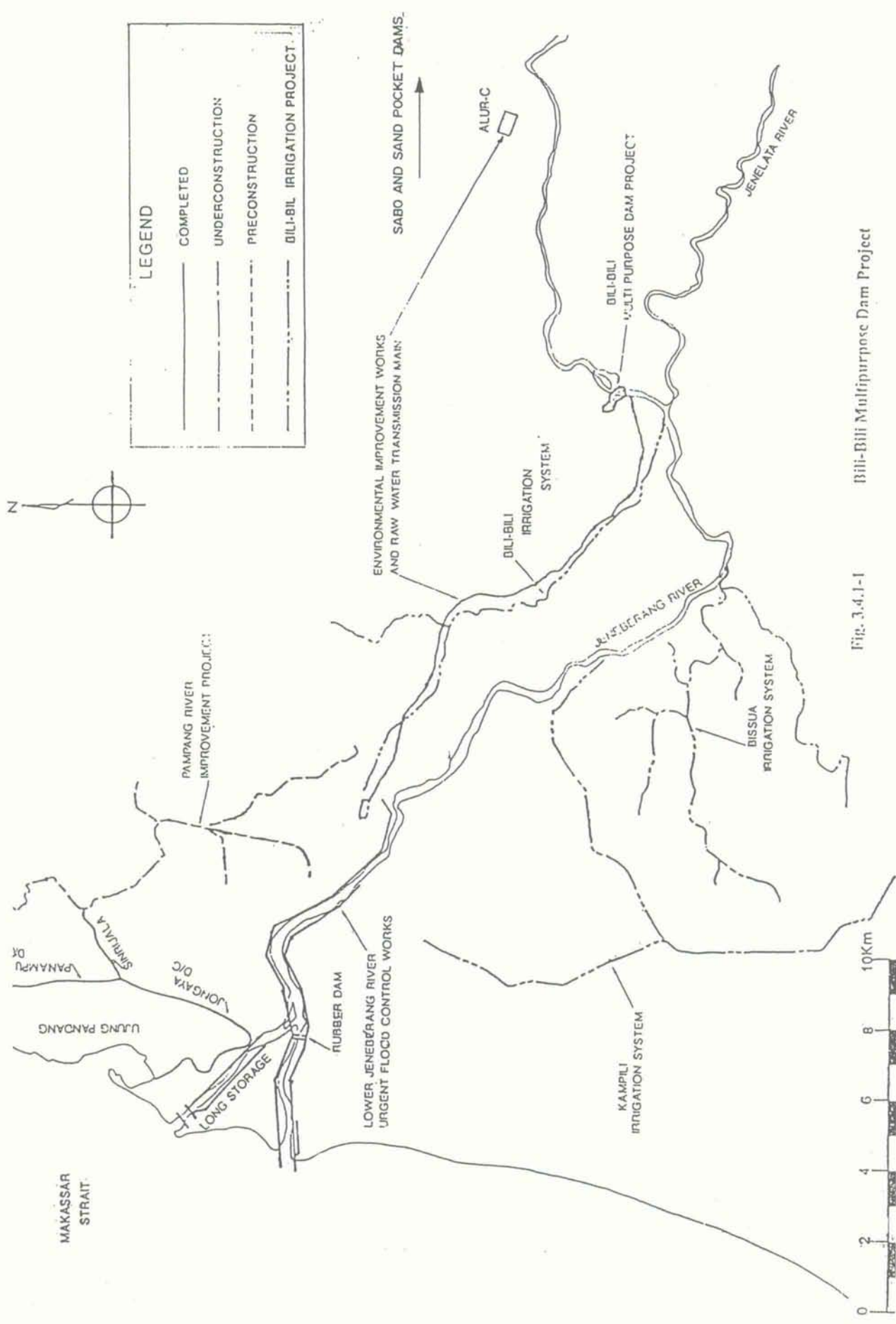


Fig. 3.4.1-1 Bili-Bili Multipurpose Dam Project