

8. その他の資料・情報

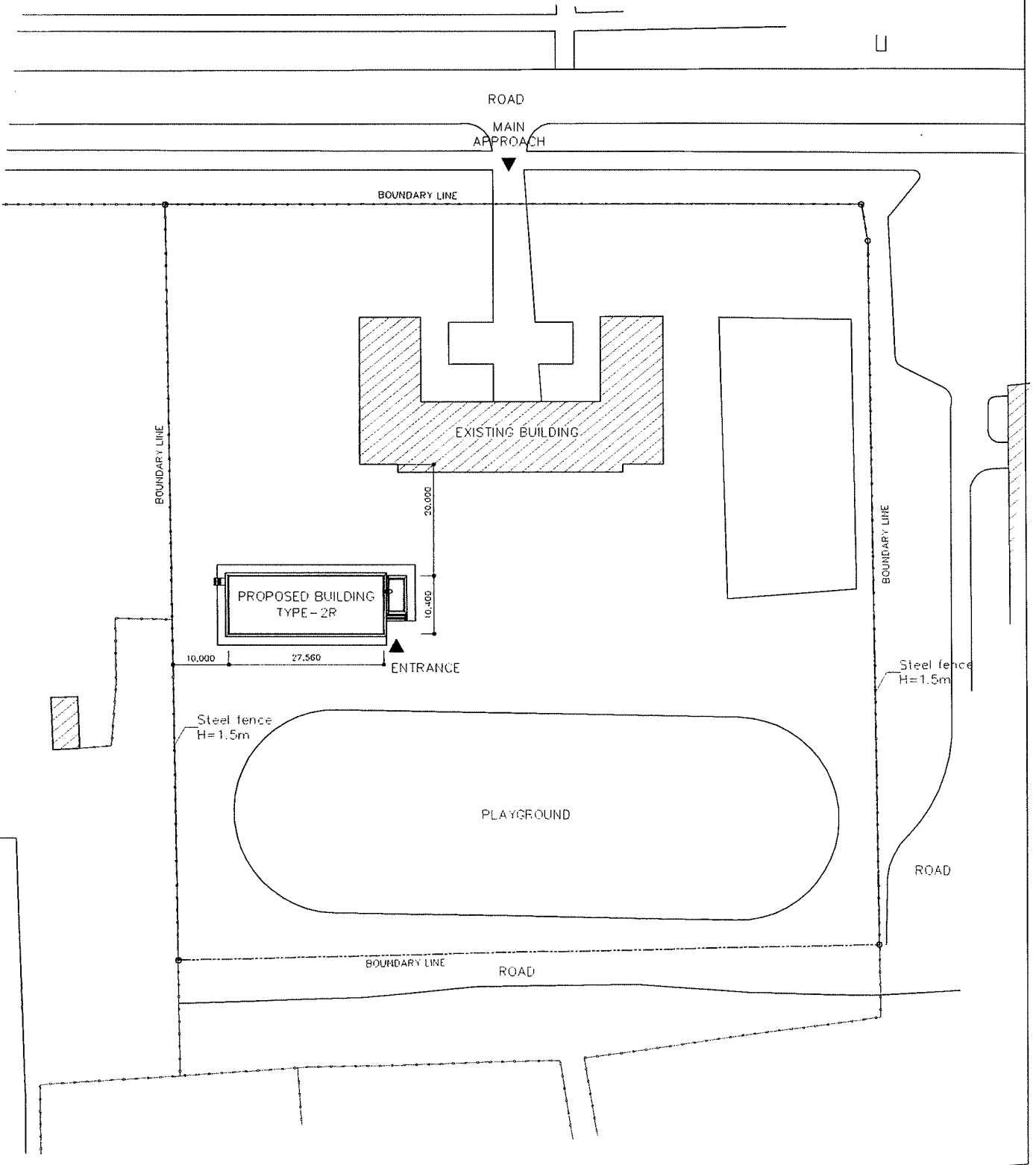
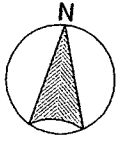
8-1 各対象校の配置図

8-2 教育状況一覧

8-3 各対象校における運営状況

8-1 各対象校の配置図

SCHOOL ID NO.14	NAME OF SCHOOL NO.14 SCHOOL	DISTRICT Bayanzurkh	SCALE 1:1000
--------------------	--------------------------------	------------------------	-----------------



SCHOOL ID

NO.17

NAME OF SCHOOL

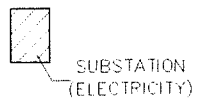
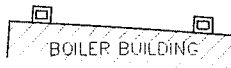
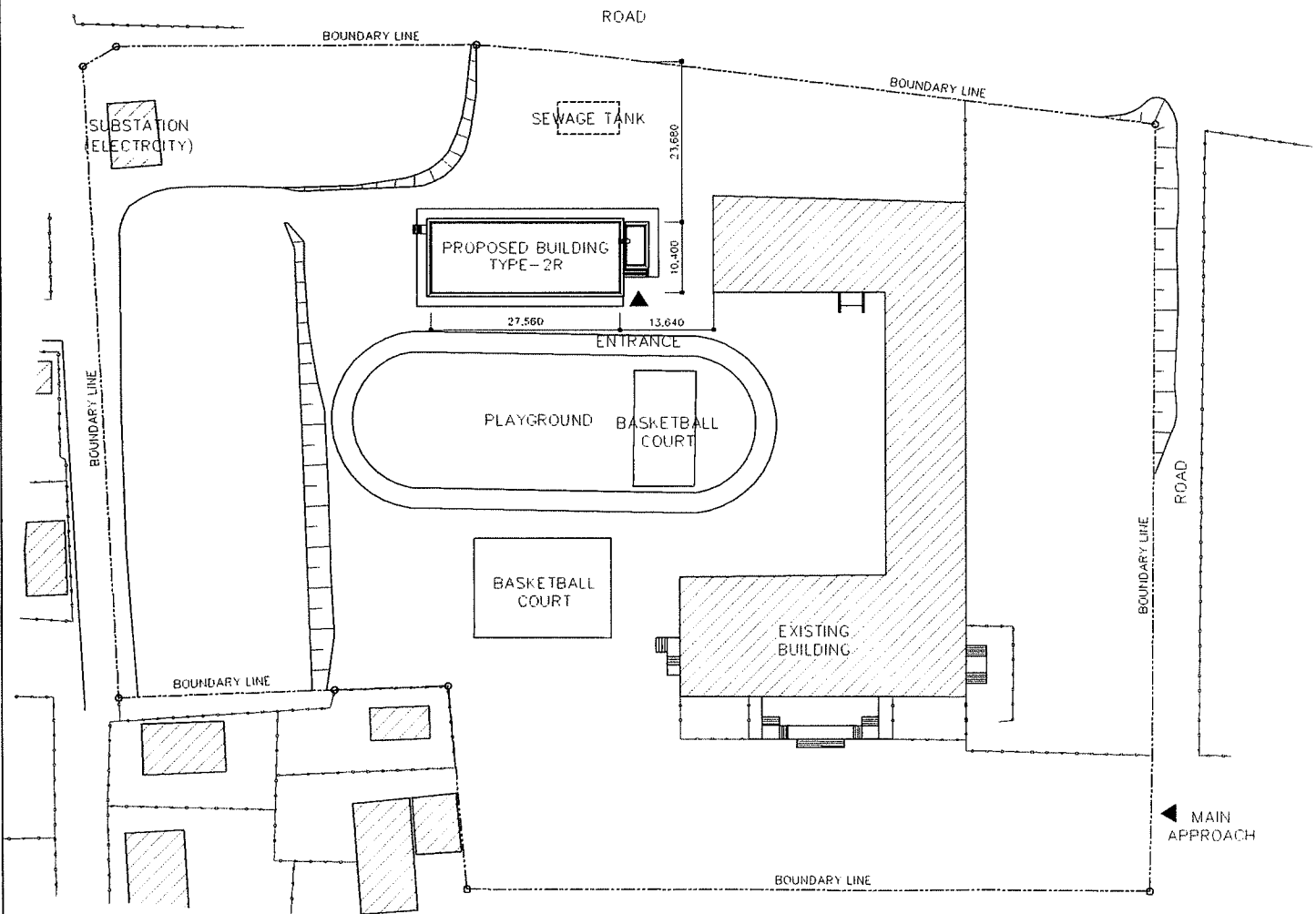
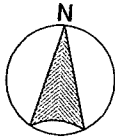
NO.17 SCHOOL

DISTRICT

Chingeltei

SCALE

1:1000



SCHOOL ID

NO.33

NAME OF SCHOOL

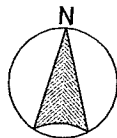
NO.33 SCHOOL

DISTRICT

Bayanzurkh

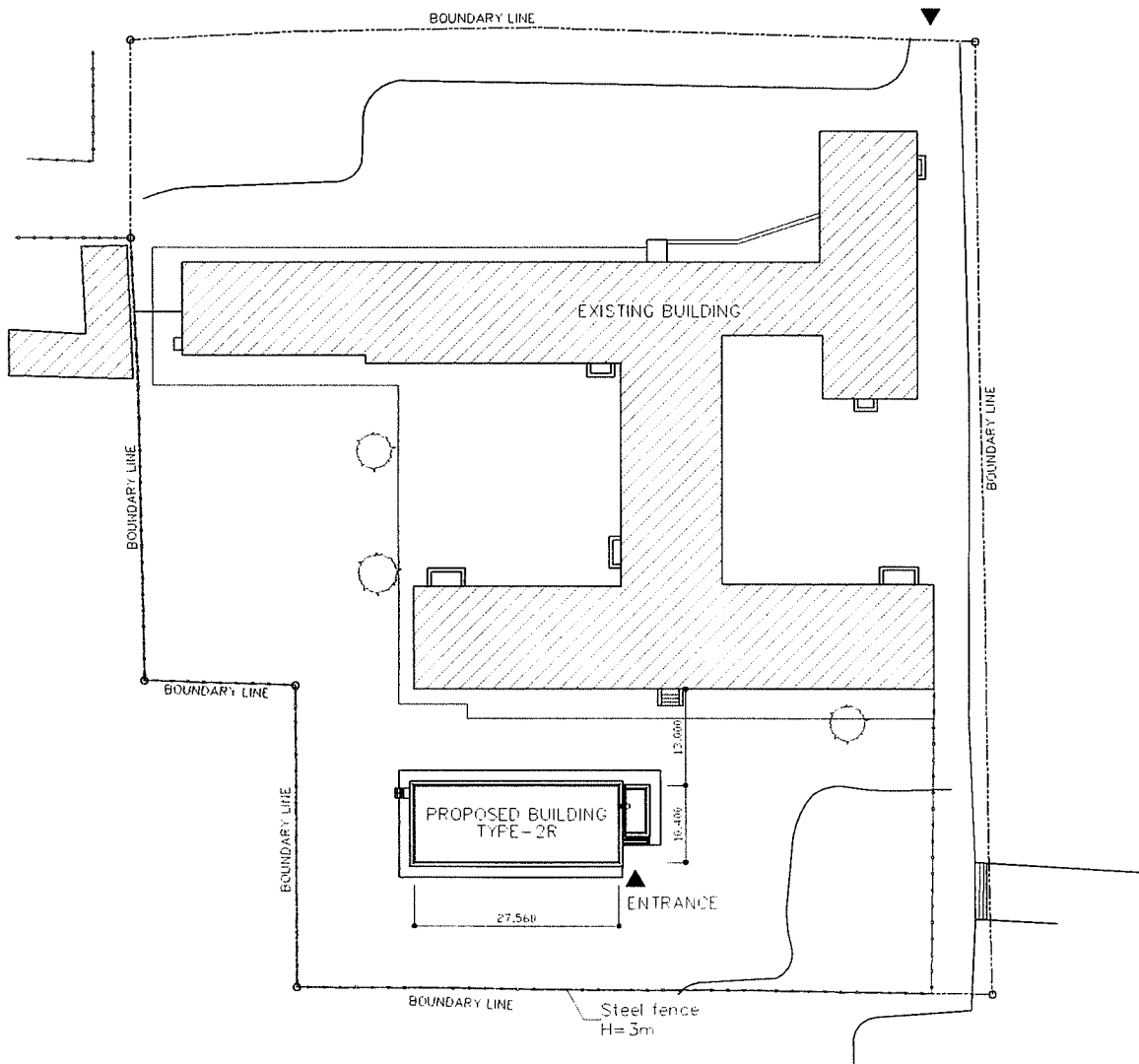
SCALE

1:1000



SUB STATION
(ELECTRICITY)

MAIN
APPROACH



SCHOOL ID

NO.39

NAME OF SCHOOL

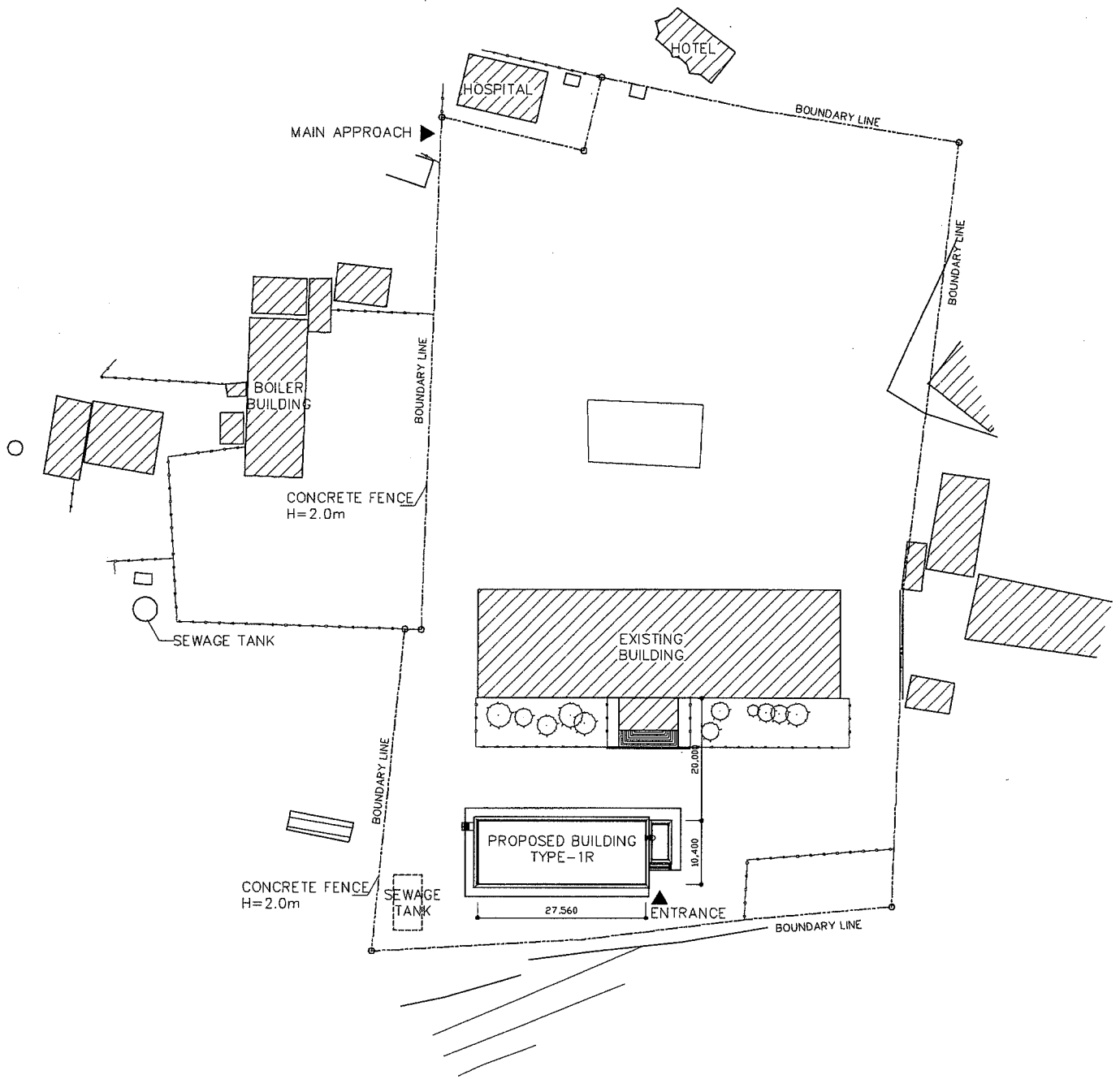
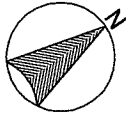
NO.39 SCHOOL

DISTRICT

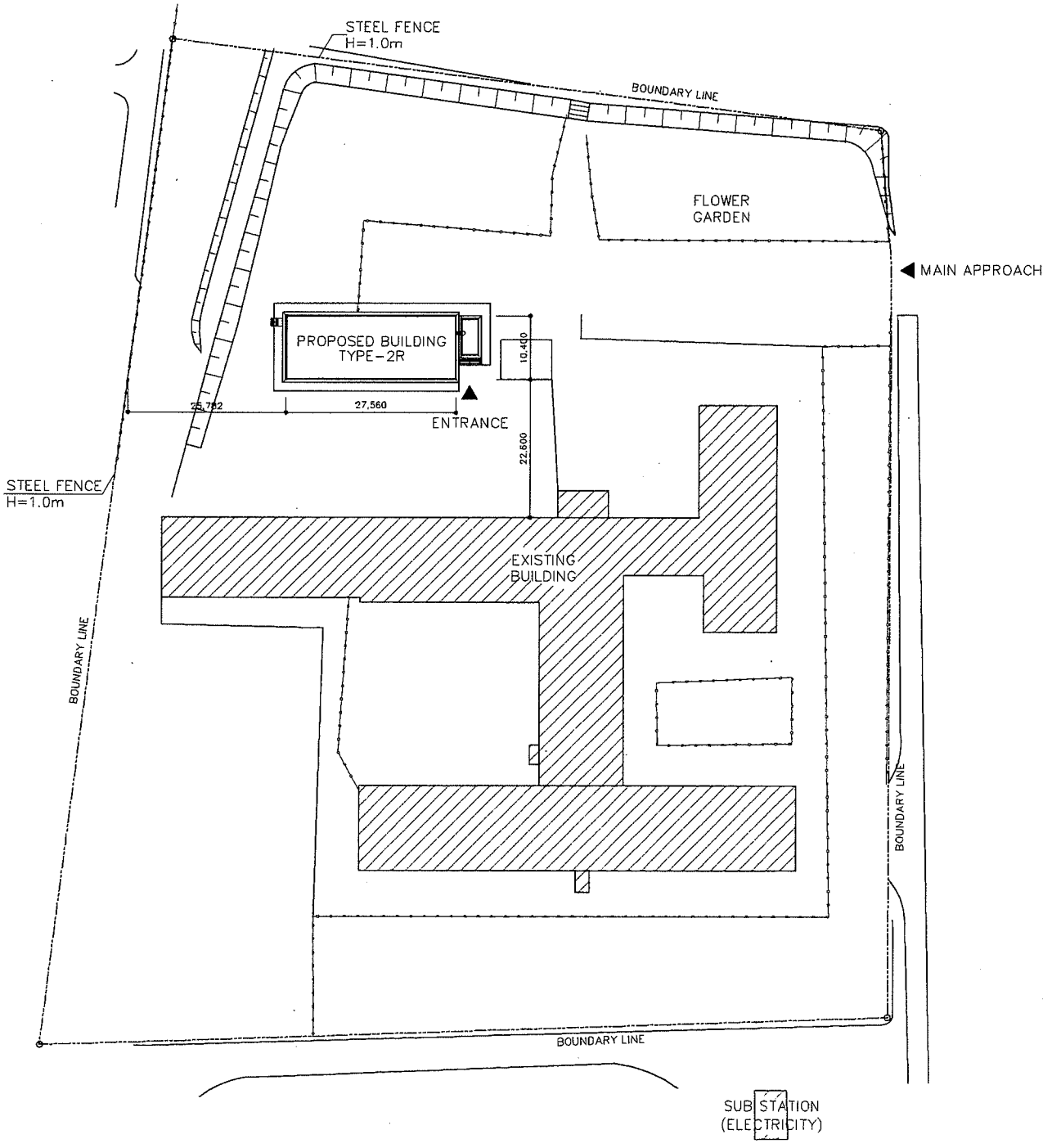
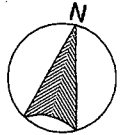
Chingeltei

SCALE

1:1000



SCHOOL ID NO.44	NAME OF SCHOOL NO.44 SCHOOL	DISTRICT Bayanzurkh	SCALE 1:1000
--------------------	--------------------------------	------------------------	-----------------



SCHOOL ID

NO.48

NAME OF SCHOOL

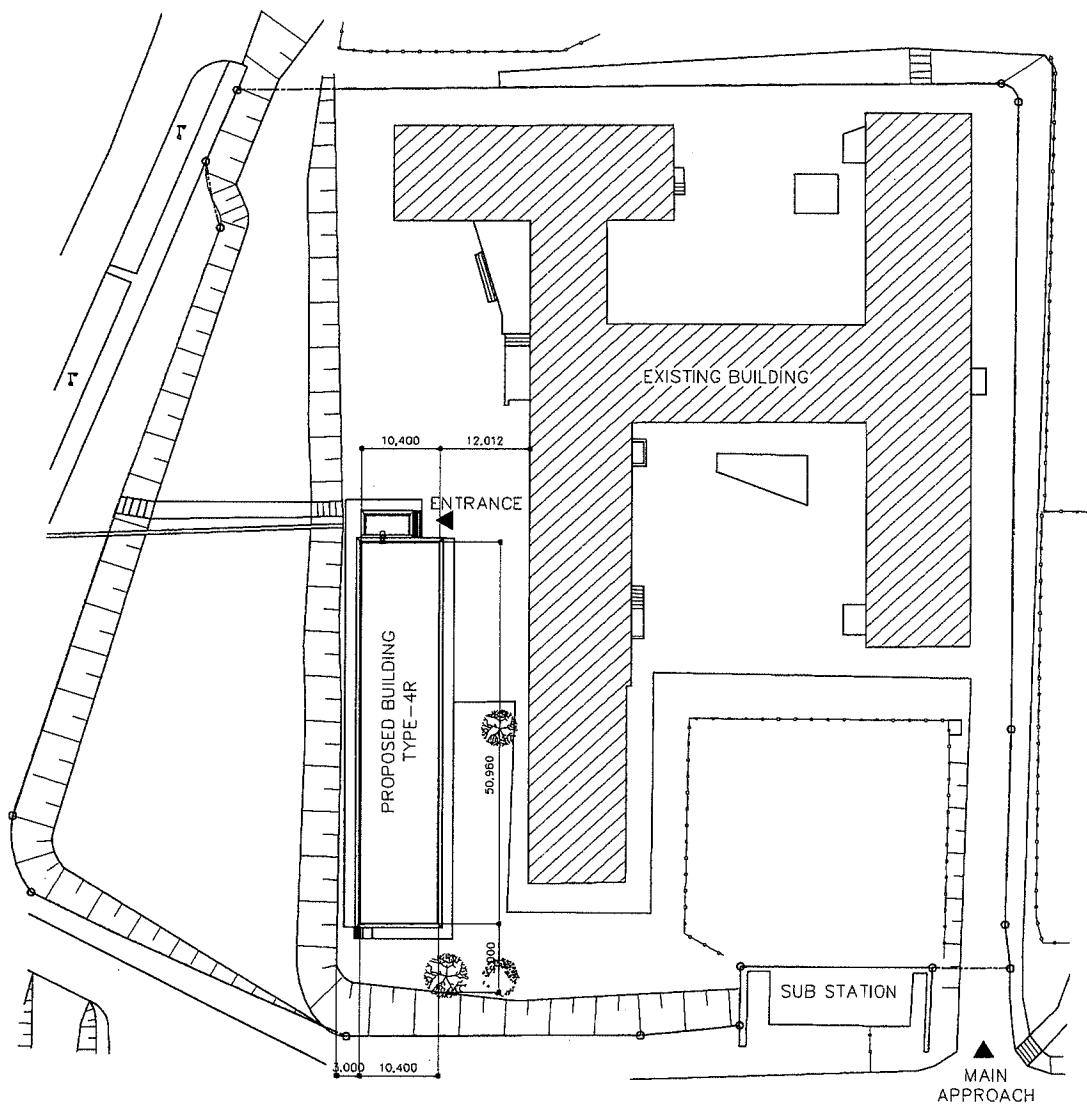
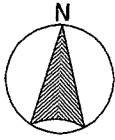
NO.48 SCHOOL

DISTRICT

Bayanzurkh

SCALE

1:1000



SCHOOL ID

NO.68

NAME OF SCHOOL

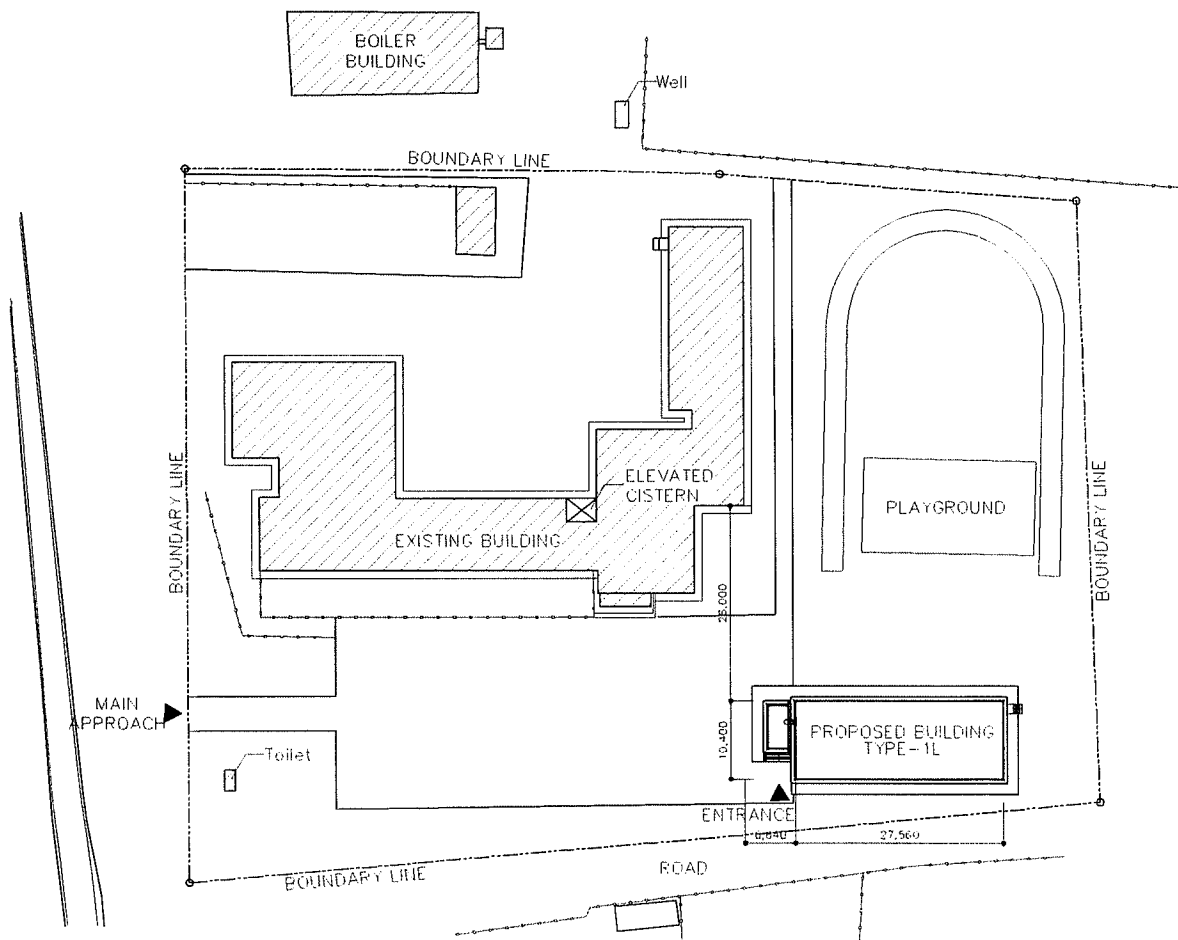
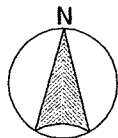
NO.68 SCHOOL

DISTRICT

Bayanzurkh

SCALE

1:1000



SCHOOL ID

NO.87

NAME OF SCHOOL

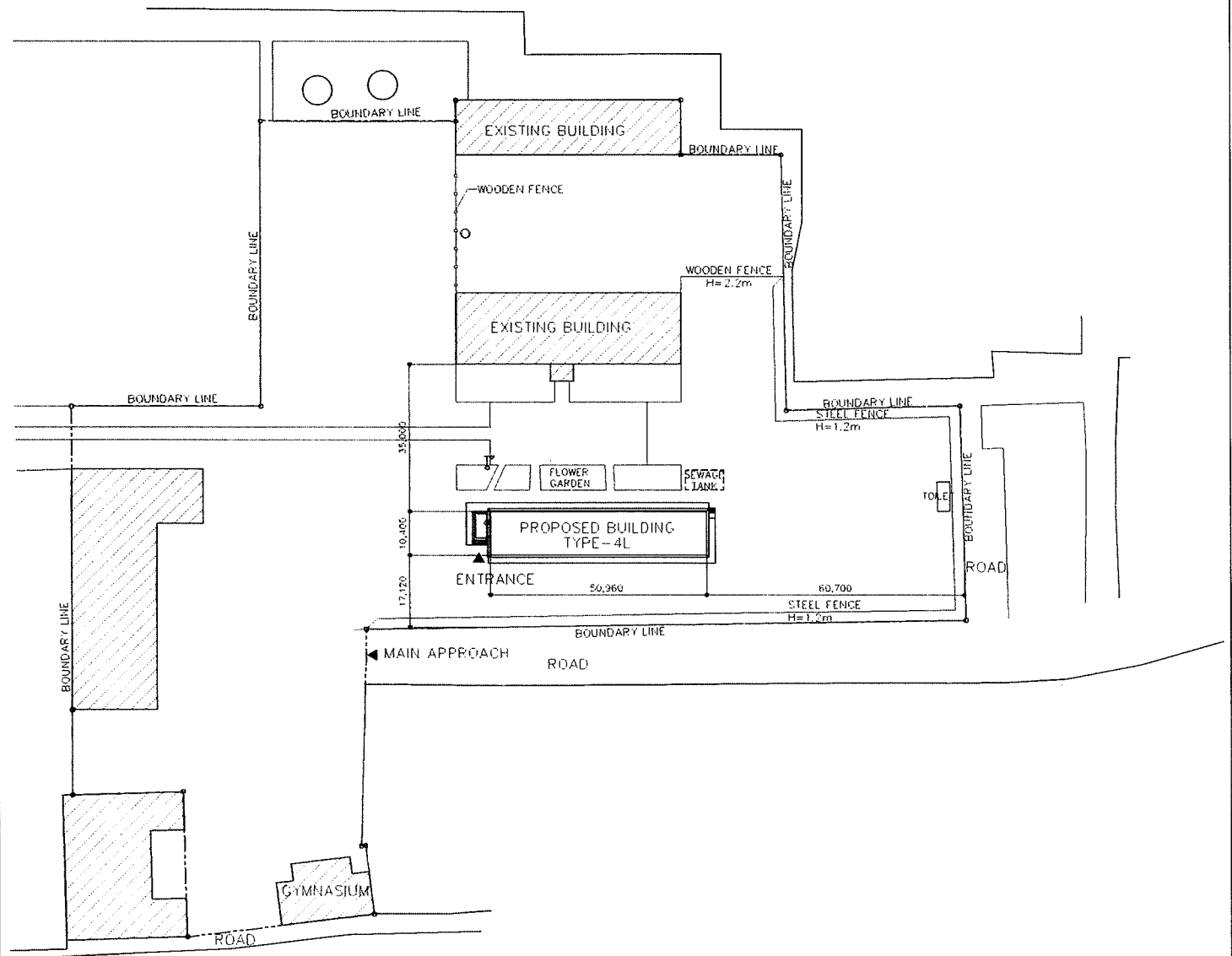
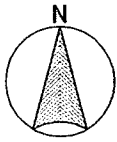
NO.87 SCHOOL

DISTRICT

Bayanzurkh

SCALE

1:1500



SCHOOL ID

NO.97

NAME OF SCHOOL

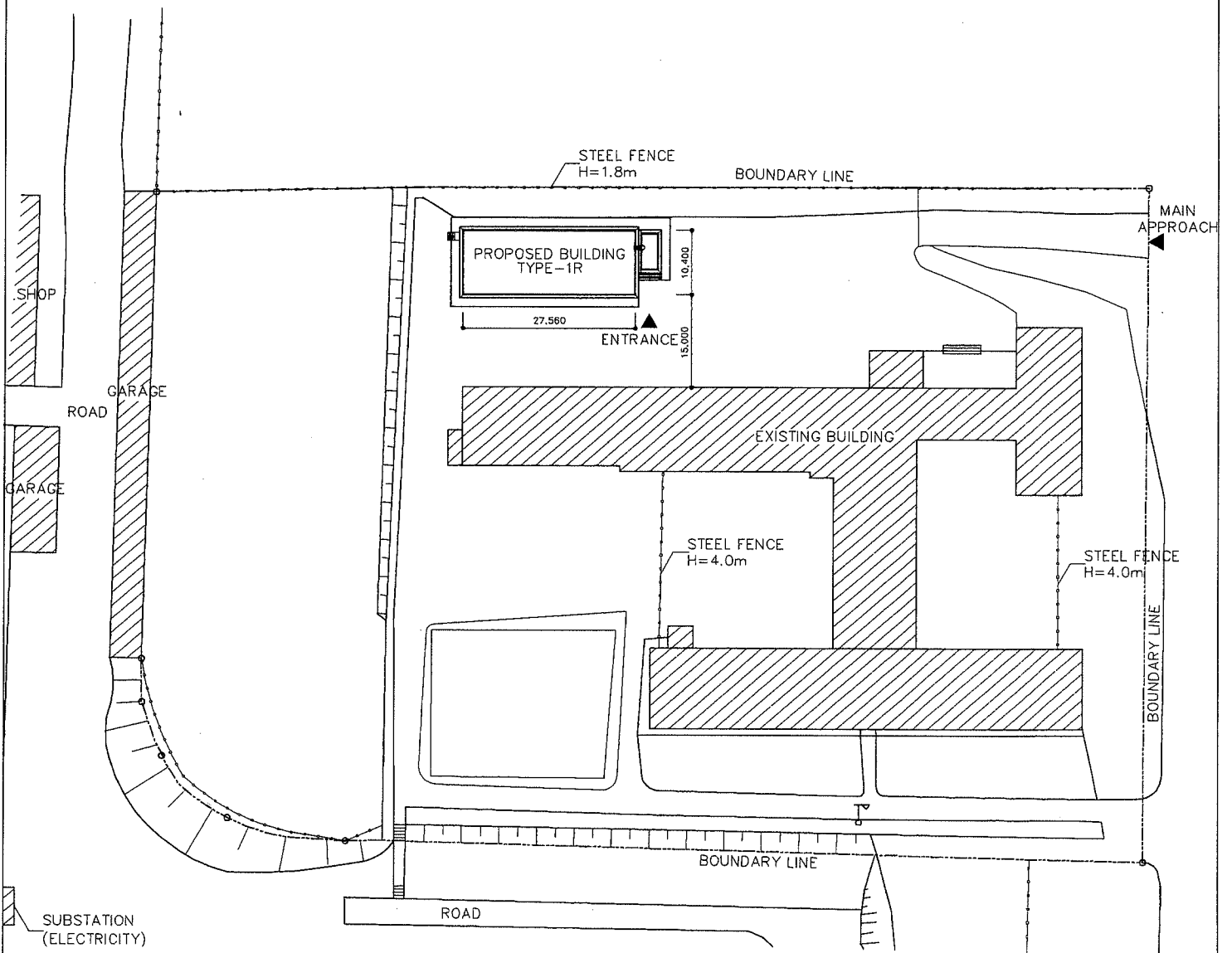
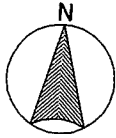
NO.97 SCHOOL

DISTRICT

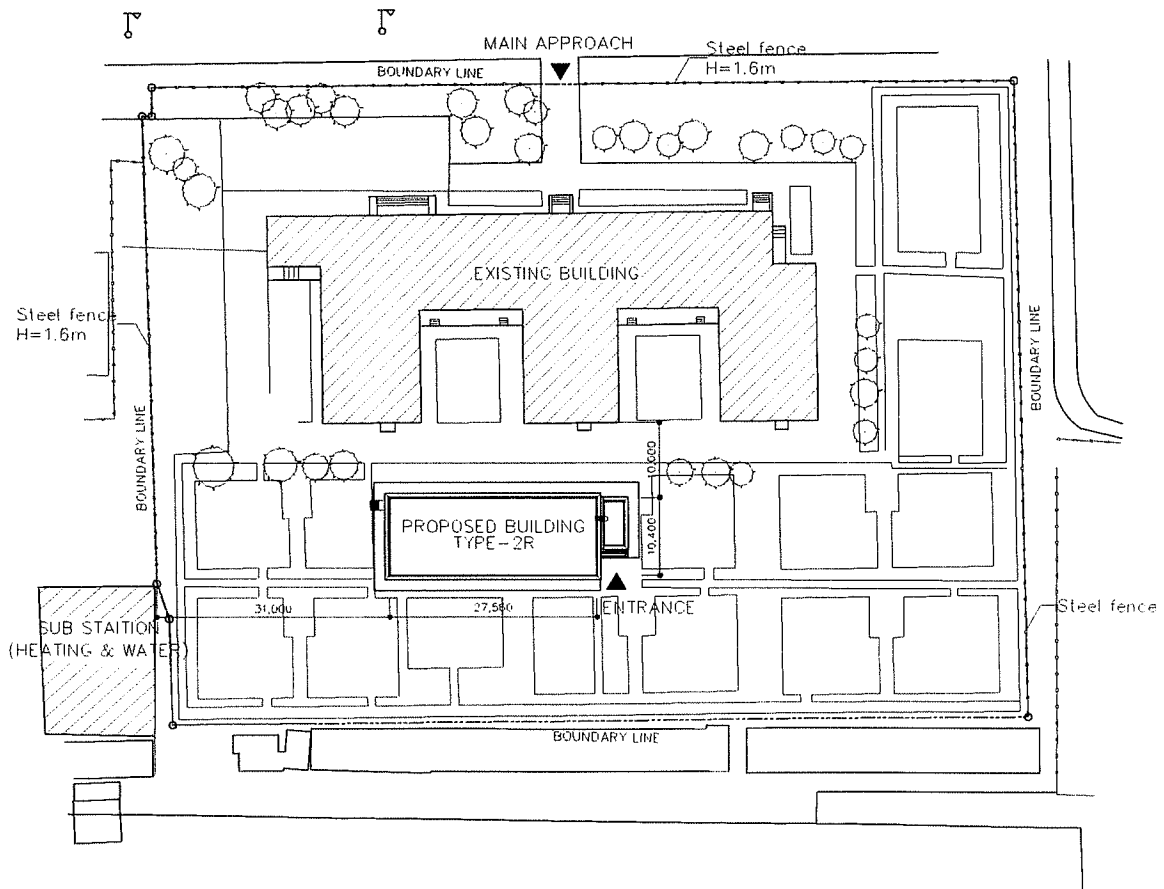
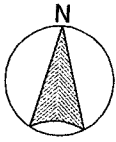
Bayanzurkh

SCALE

1:1000



SCHOOL ID IR	NAME OF SCHOOL IREDUJ COMPLEX SCHOOL	DISTRICT Songinokhairkhan	SCALE 1:1000
-----------------	---	------------------------------	-----------------



SCHOOL ID

GO

NAME OF SCHOOL

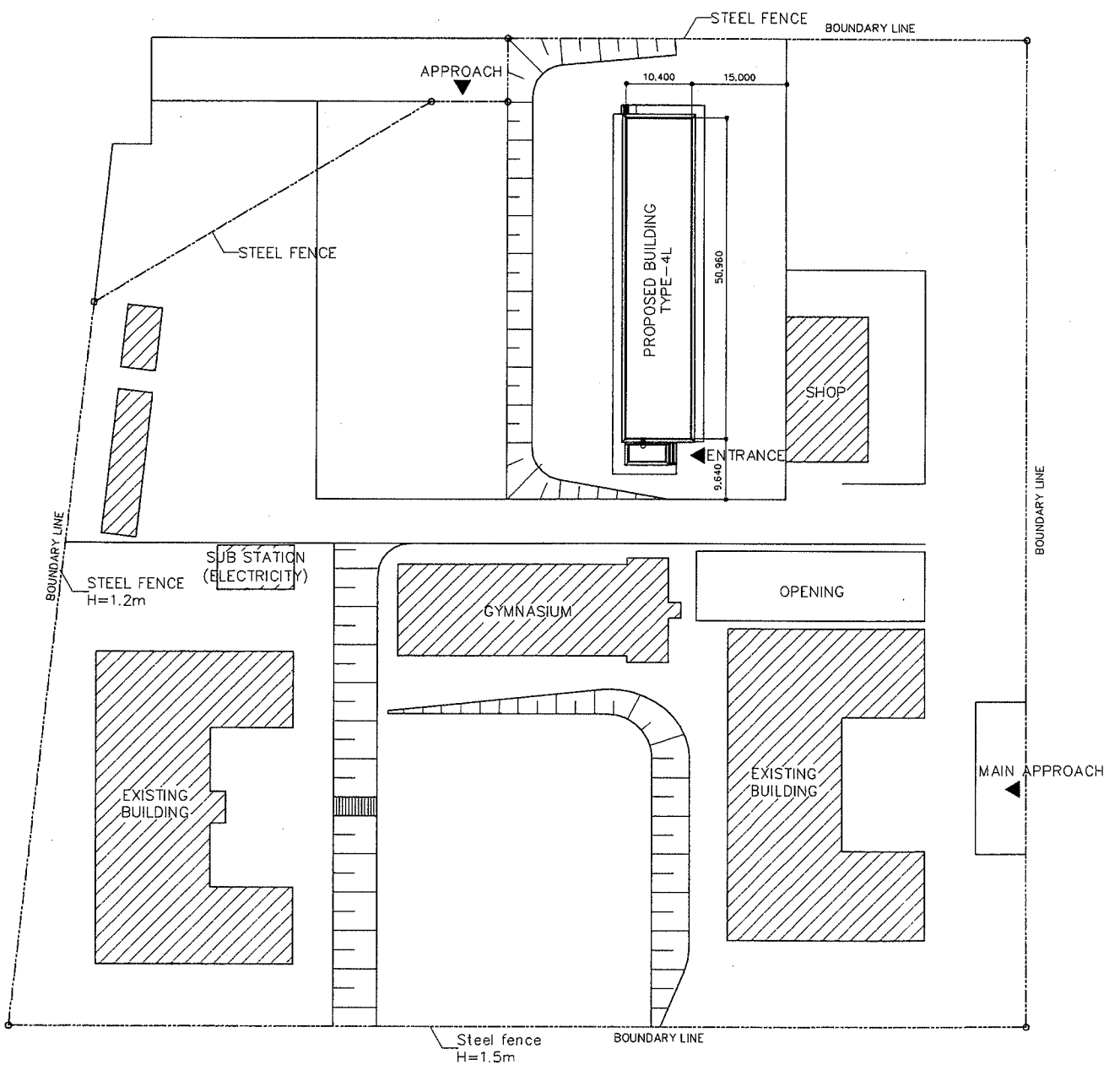
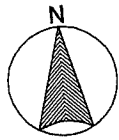
GOROMT COMPLEX SCHOOL

DISTRICT

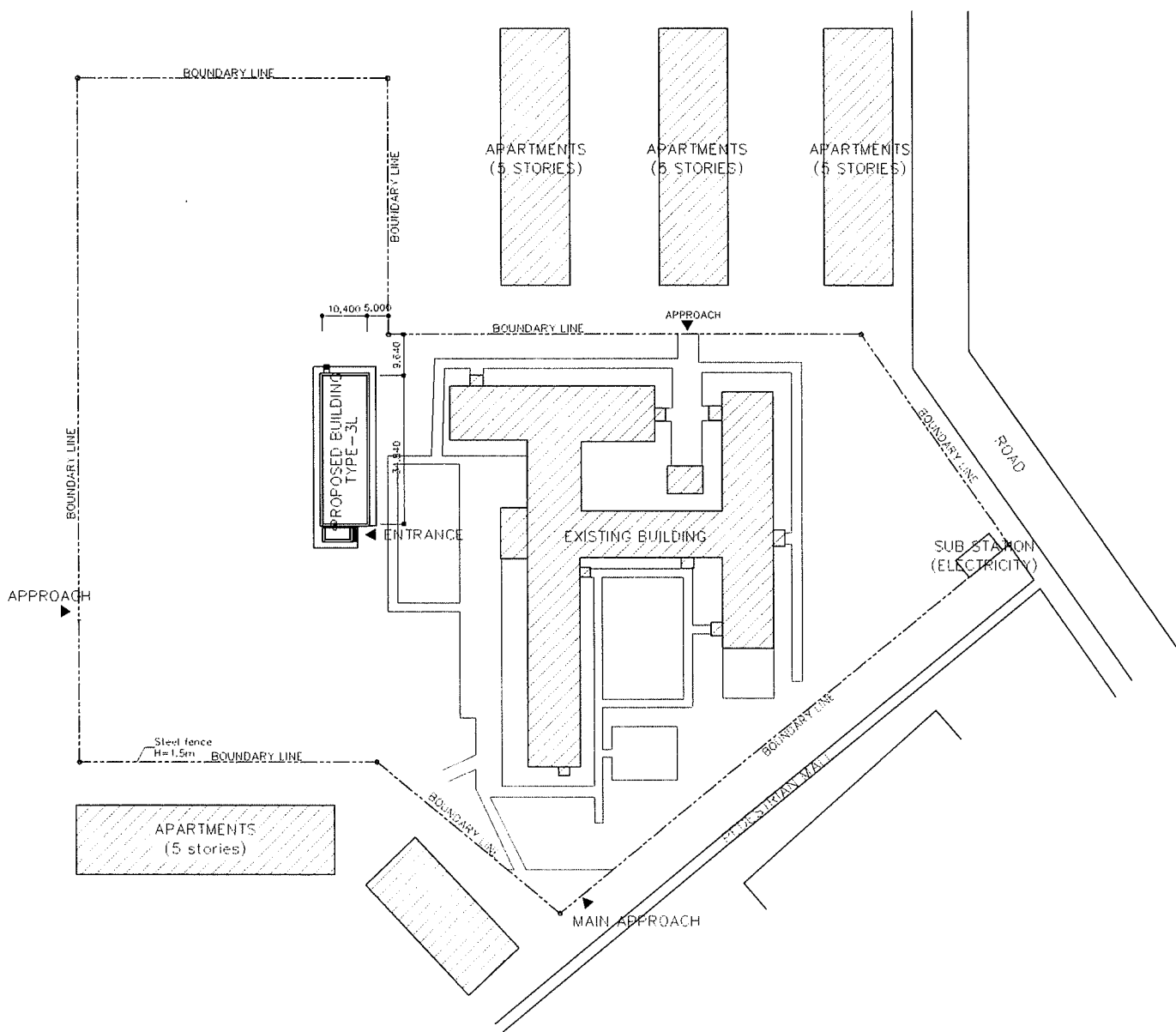
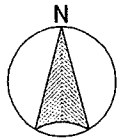
Nalaikha

SCALE

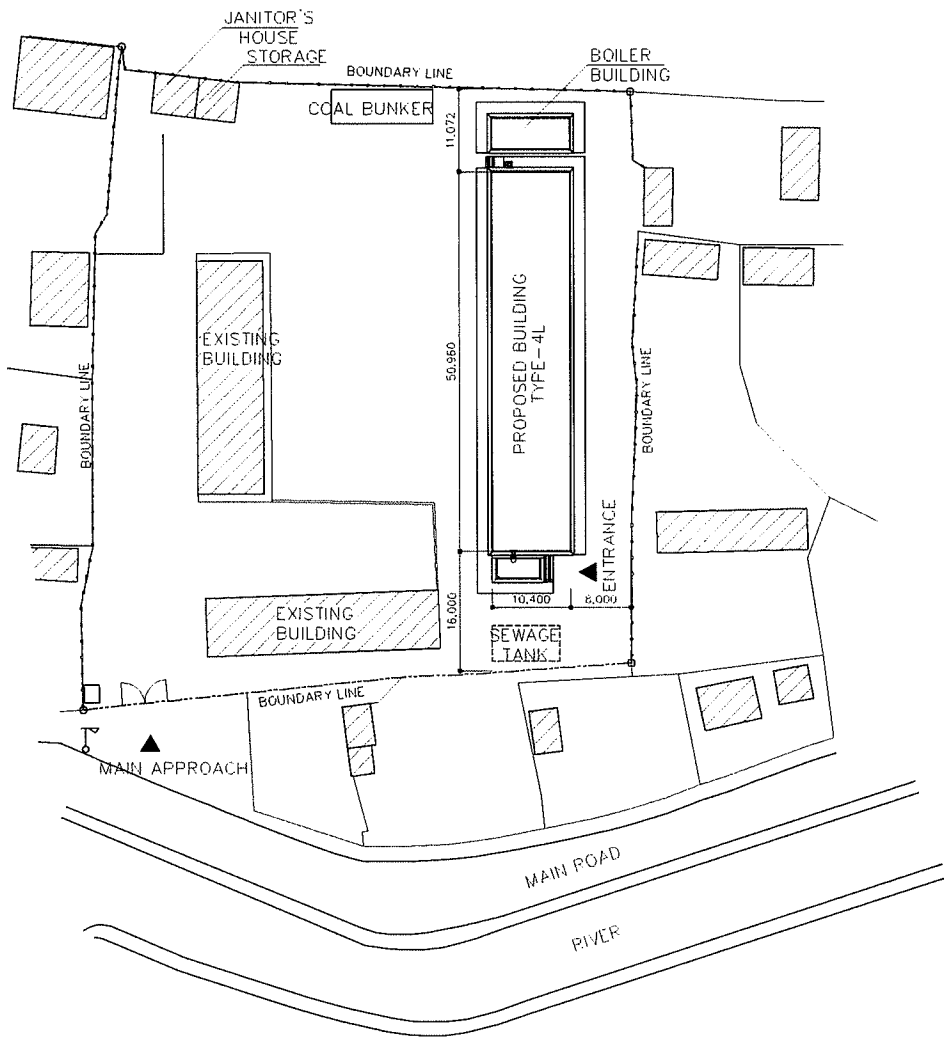
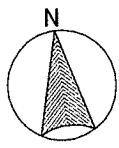
1:1000



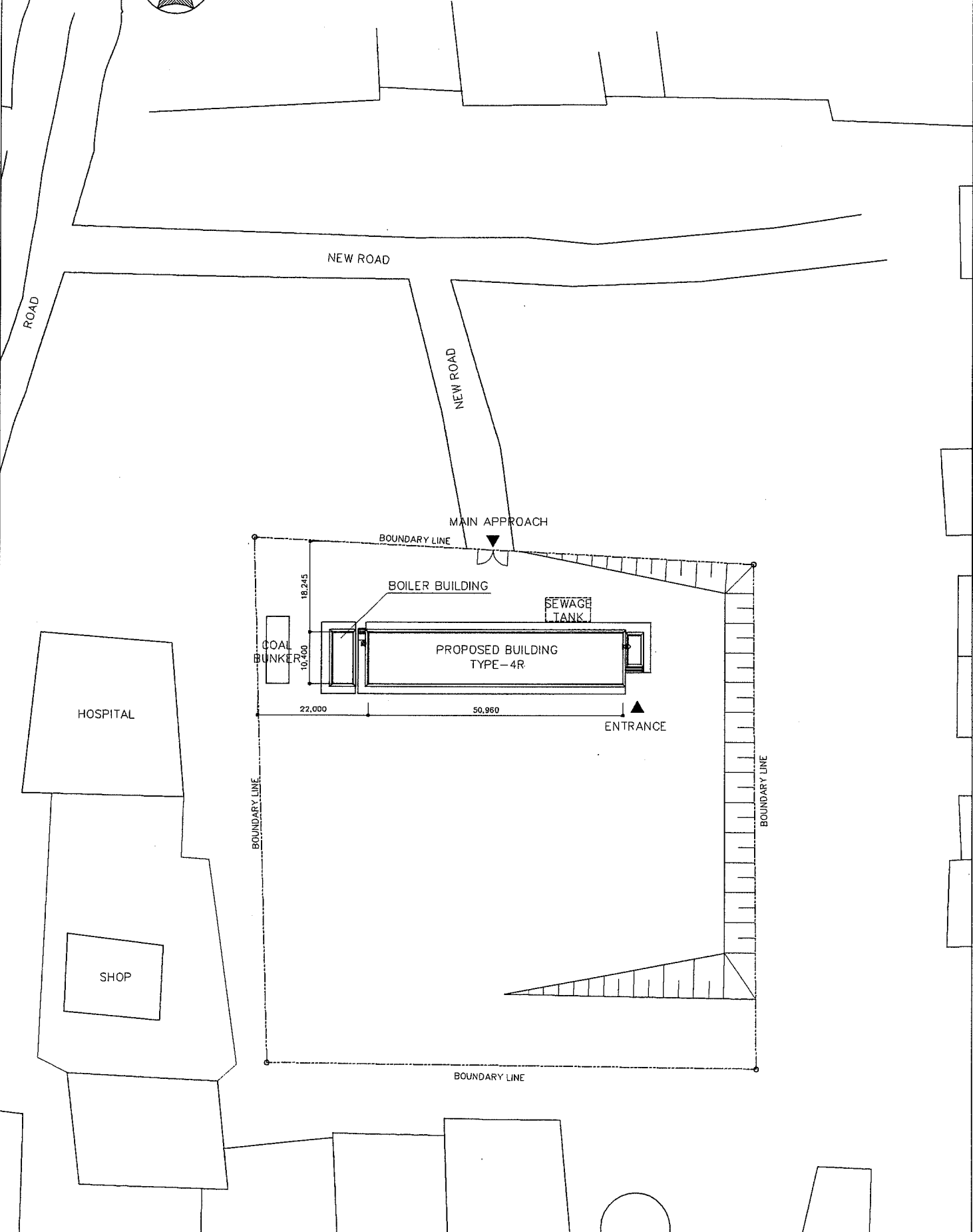
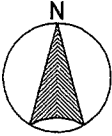
SCHOOL ID BO	NAME OF SCHOOL BOROVSROL SCHOOL	DISTRICT Baganor	SCALE 1:1500
-----------------	------------------------------------	---------------------	-----------------



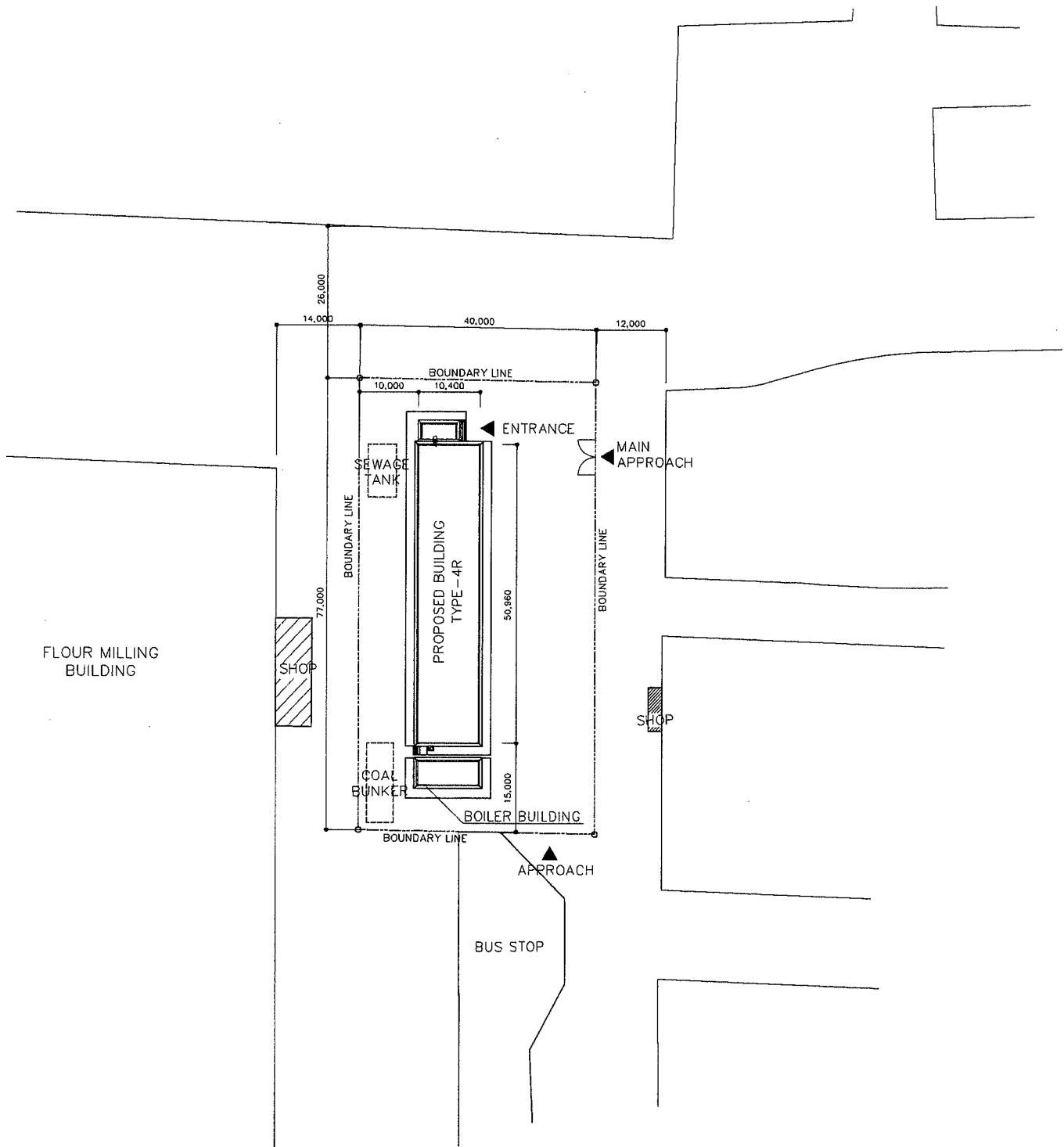
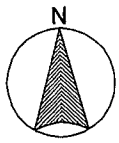
SCHOOL ID NO.61	NAME OF SCHOOL NO.61 SCHOOL	DISTRICT Chingeltei	SCALE 1:1000
--------------------	--------------------------------	------------------------	-----------------



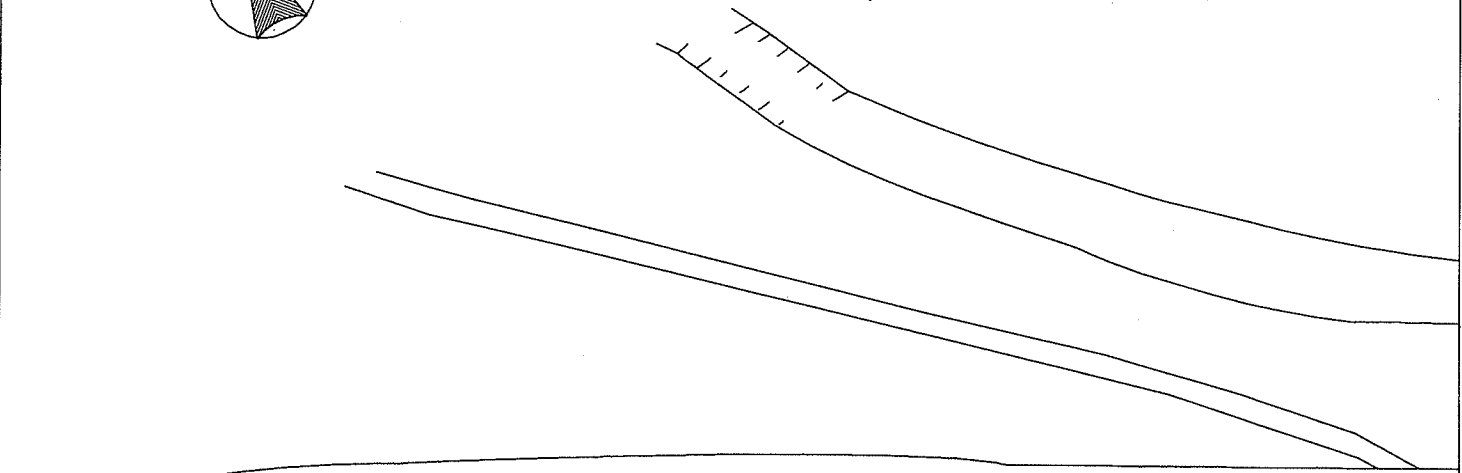
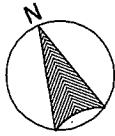
SCHOOL ID NO.112	NAME OF SCHOOL NO.112 SCHOOL	DISTRICT Songinokhairkhan	SCALE 1:1000
---------------------	---------------------------------	------------------------------	-----------------



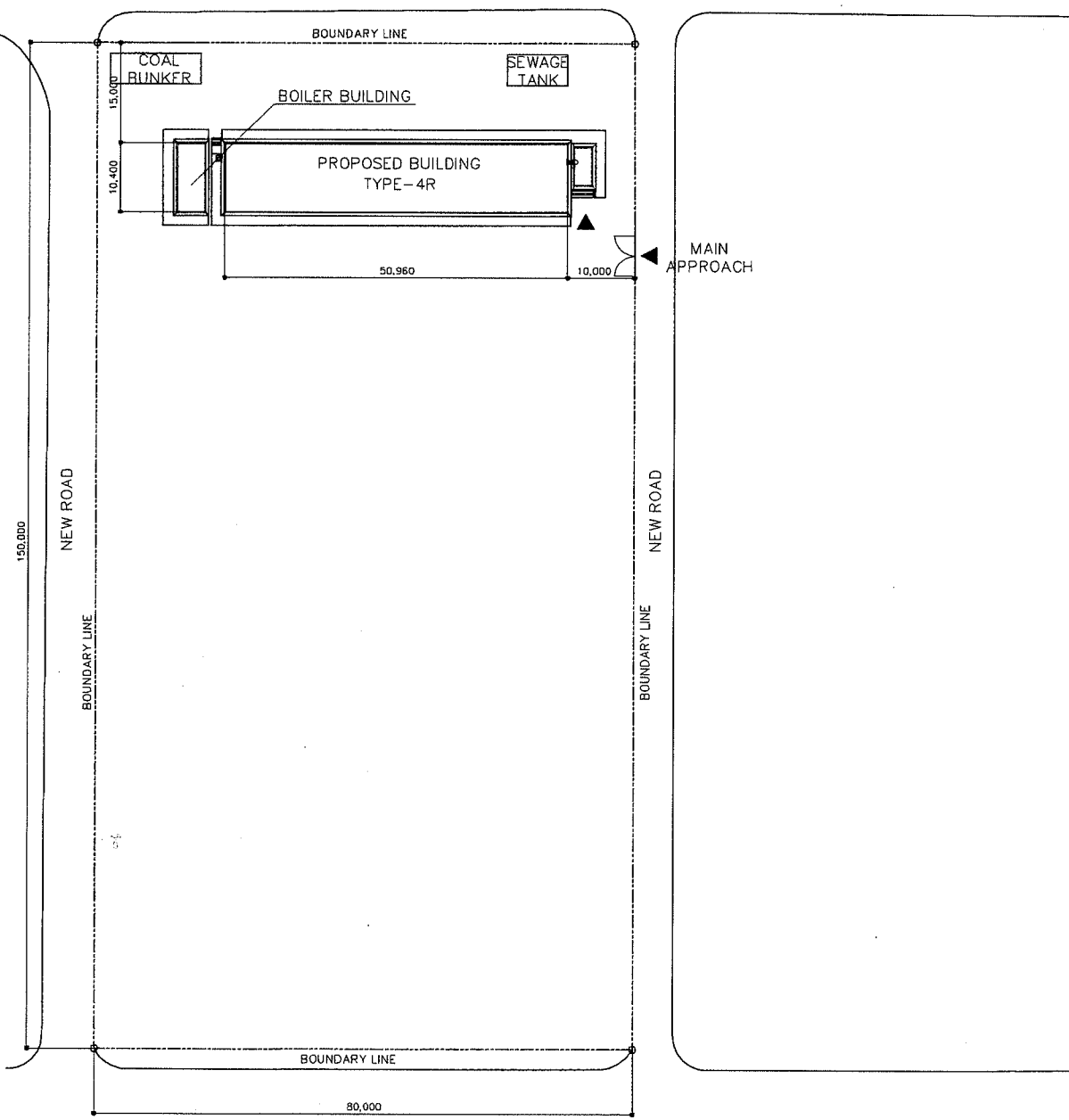
SCHOOL ID NO.114	NAME OF SCHOOL NO.114 SCHOOL	DISTRICT Khan-uul	SCALE 1:1000
---------------------	---------------------------------	----------------------	-----------------



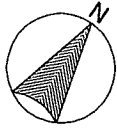
SCHOOL ID NO.115	NAME OF SCHOOL NO.115 SCHOOL	DISTRICT Songinokhairkhan	SCALE 1:1000
---------------------	---------------------------------	------------------------------	-----------------



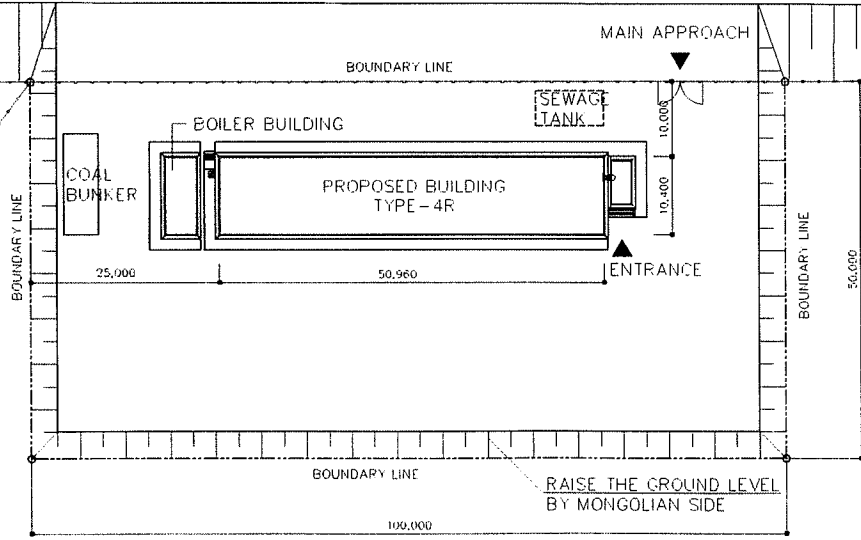
NEW ROAD



SCHOOL ID NO.116	NAME OF SCHOOL NO.116 SCHOOL	DISTRICT Sukhbaatar	SCALE 1:1000
---------------------	---------------------------------	------------------------	-----------------



ROAD



8 - 2 教育狀況一覽

8-2 教育状況一覧

No.	学校名	地区名	シフト	生徒数 2003年	学級数	総生徒数	転入率	過去5年間の生徒数				周辺地域	学区内の子どもへの入学制限実施	転入率			
								1998年	1999年	2000年	2001年				2002年		
1	No.48 School	Bayanzurkh	4&3	3,590	74	48.5	35.1%	41.8%	2,486	2,666	2,837	3,051	3,231	8.9%	団地+ケル	○	10.2%
2	No.97 School	Bayanzurkh	2	2,335	54	43.2	20.4%	15.2%	2,051	2,070	2,350	2,403	2,473	2.8%	団地+ケル		9.0%
3	No.2 School	Sukhbaatar	2	2,371	68	34.9	7.4%	42.2%	2,101	2,158	2,214	2,301	2,326	2.6%	団地	○	7.5%
4	No.87 School	Bayanzurkh	3	1,396	42	33.2	11.9%	31.3%	799	859	970	1,022	1,169	14.9%	ケル		2.3%
5	No.39 School	Chingeltei	2	2,200	52	42.3	15.4%	33.3%	1,300	1,553	1,800	2,013	2,200	13.8%	一戸建て+ケル		1.9%
6	No.3 School	Sukhbaatar	2	2,228	51	43.7	31.4%	50.0%	2,235	2,249	2,240	2,263	2,284	-0.1%	団地+ケル		15.4%
7	No.73 School	Bayangol	3&2	1,404	39	36.0	30.8%	39.8%	1,184	1,289	1,384	1,405	1,415	3.7%	団地		3.8%
8	No.14 School	Bayanzurkh	3	2,203	44	50.1	22.7%	50.4%	1,830	1,890	1,998	2,102	2,180	4.1%	ケル	△(住民票)	13.8%
9	No.19 School	Bayangol	3	1,212	33	36.7	0.0%	56.7%	1,173	1,073	1,312	1,272	1,200	0.7%	ケル		16.6%
10	Iredui Complex*	Songinokhairkhan	2	4,220	121	34.9	27.0%	17.1%	7,278	8,163	9,015	10,400	10,600	9.6%	団地+ケル	△(住民票)	8.1%
11	No.12 School	Songinokhairkhan	3	1,876	46	40.8	23.9%	33.7%	1,651	1,655	1,670	1,678	1,687	2.7%	団地+ケル		7.1%
12	No.21 School	Bayanzurkh	2	1,584	44	36.0	22.7%	65.6%	1,190	1,500	1,890	1,900	1,680	6.6%	団地+ケル		16.1%
13	Goromt	Nalaikha	3&2	5,573	137	40.7	15.3%	48.5%	4,535	4,780	4,882	5,079	5,215	4.6%	団地+ケル		4.8%
14	Borovstol**	Baganor	3&4	2,639	75	35.2	21.3%	19.4%	4,998	3,298	5,794	6,161	6,328	5.7%	団地+ケル		15.9%
15	No.35 School	Sukhbaatar	2	1,977	45	43.9	15.6%	29.5%	1,674	1,738	1,826	1,879	1,886	3.6%	ケル	○	6.1%
16	No.33 School	Bayanzurkh	3&2	2,612	57	45.8	45.6%	53.9%	2,039	2,201	2,250	2,443	2,533	5.6%	団地		28.2%
17	No.68 School	Bayanzurkh	3&2	1,284	35	36.7	11.4%	30.0%	770	884	1,013	1,153	1,284	13.4%	ケル	○	1.6%
18	No.79 School	Bayanzurkh	2	2,444	65	37.6	20.0%	54.8%	1,930	1,980	2,130	2,300	2,435	5.3%	ケル		0.0%
19	No.44 School	Bayanzurkh	2	2,198	56	39.3	33.9%	38.9%	1,100	1,187	1,655	1,964	2,091	20.0%	団地+ケル		9.0%
20	No.20 School	Bayangol	2	2,914	69	42.2	26.1%	64.5%	2,508	2,507	2,760	2,945	2,956	3.2%	団地		4.1%
21	No.5 School	Chingeltei	3	2,317	59	39.3	18.6%	30.5%	2,289	2,338	2,345	2,398	2,406	0.2%	団地	○	19.6%
22	No.40 School	Bayangol	2	2,067	54	38.3	27.8%	45.4%	1,925	1,986	2,001	2,030	2,047	1.5%	団地		20.3%
23	No.17 School	Chingeltei	2	2,717	52	52.3	9.6%	43.6%	1,678	1,894	2,101	2,218	2,334	12.4%	ケル		4.6%
24	No.16 School	Sukhbaatar	2	1,619	44	36.8	15.9%	17.4%	1,280	1,469	1,527	1,610	1,662	5.3%	ケル		3.0%
25	No.42 School	Songinokhairkhan	3変	2,609	65	40.1	0.0%	31.2%	2,105	2,139	2,307	2,354	2,503	4.8%	ケル	○	3.8%
26	No.52 School	Khan-uul	2	2,154	49	44.0	57.1%	22.9%	1,779	1,870	1,891	1,993	2,039	4.2%	団地のみ		9.0%
27	Mongeni Complex	Bayangol	3	1,551	52	29.8	100.0%	79.9%	-	-	1,248	1,416	1,510	8.1%	-	○	-

平均 40.3%

*Iredui校の生徒数は本計画規模設定の対象となる第4、6、7校舎のもののみ。学校全体では、生徒数:10,600、学級数:300、越境通学者の割合:8.1%

**Borovstol校の現在の生徒数は本計画規模設定の対象である1年~4年の合計。学校全体では、生徒数:6410人、学級数:177