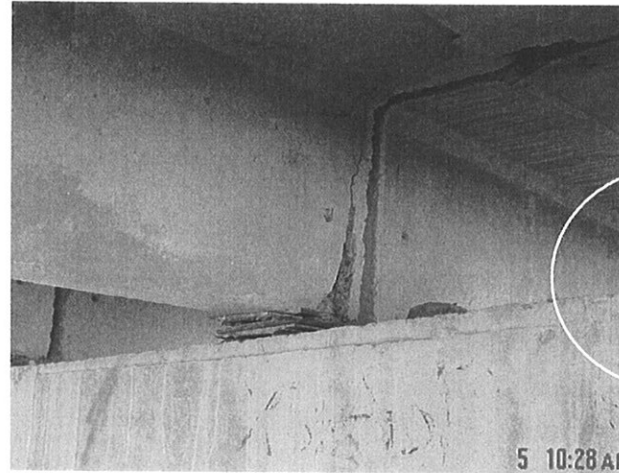
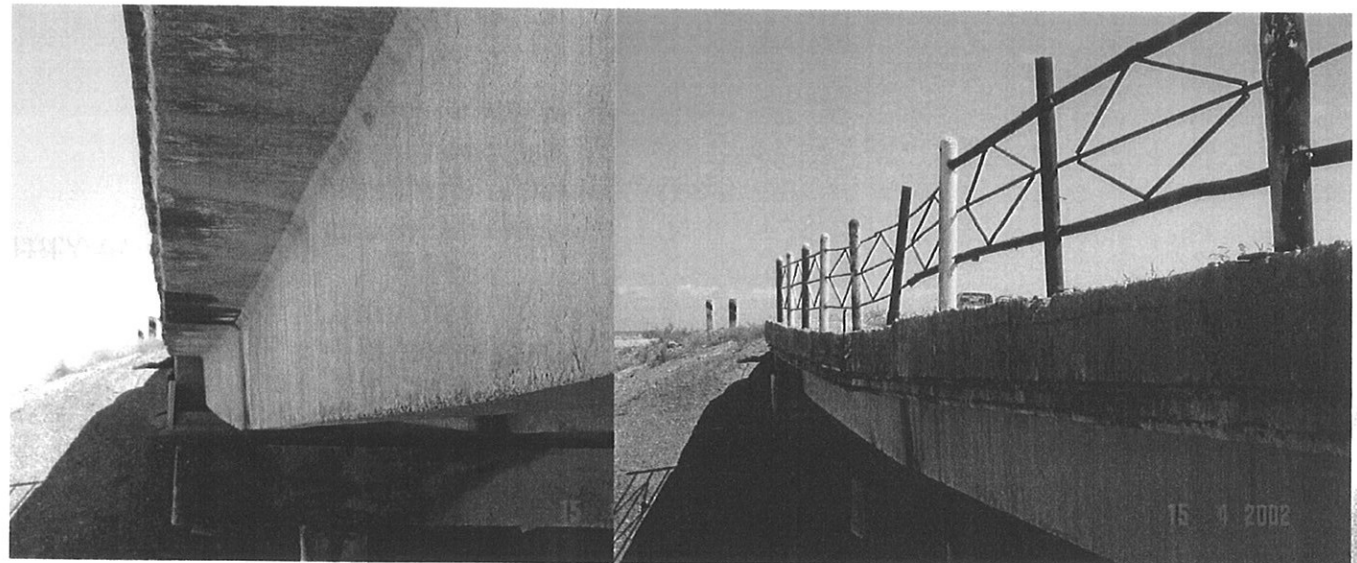


**Km 244 Bridge 3 x 14m section .**

**Km 258 Bridge 3 x 14m section**  
previously repaired with steel  
plates which is a typical repair  
throughout the bridges on port to  
Ashgabat route.



**Km 262 Bridge 2 x 14m section.**  
Centre pier is subsided but is  
considered useable due to  
butting of bridge sections.



- Km244.0      3 x 1 4 m の橋。
- Km258.0      3 x 1 4 m の橋。以前鉄板をつかい修繕した模様。  
このような修繕は Ashgabat までのルートにいくつもある。
- Km262.0      2 x 1 4 m の橋。橋の中央は沈んでいるが、はりがあるため、  
使用可能。

65

**Km 264 bridge 3 x 14m section.**

**Km 272 bridge 2 x 14m section**

**Km 275 bridge 2 x 14m section**

**Km 277 bridge 2 x 6m section**

**Km 278 bridge 2 x 6m section**

**Km 278 bridge 1 x 14m section**

**Km 282 bridge 3 x 14m section**

**Km 274 bridge 2 x 14m section**

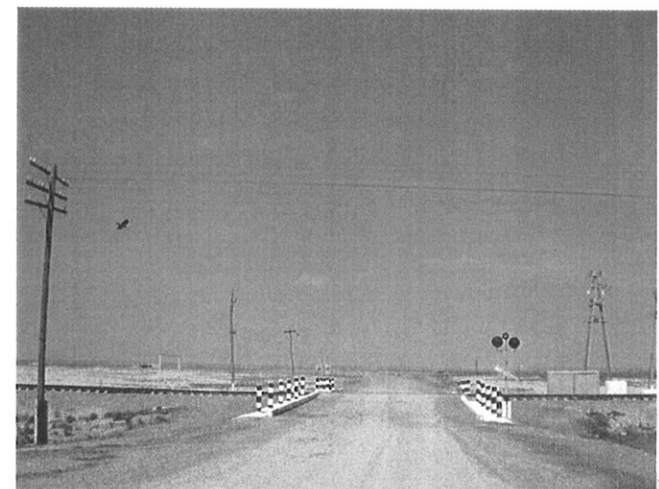
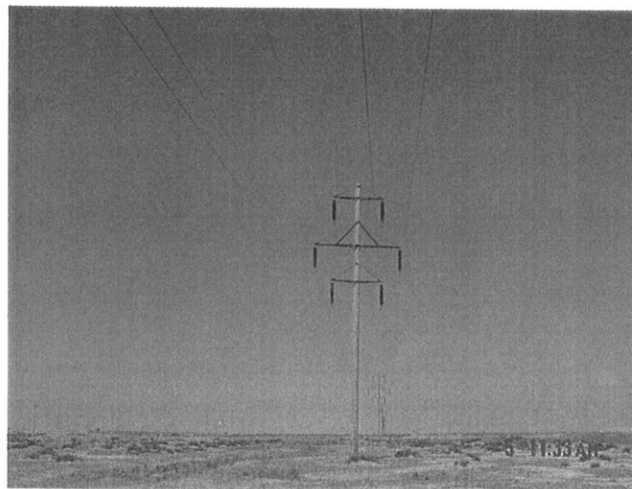
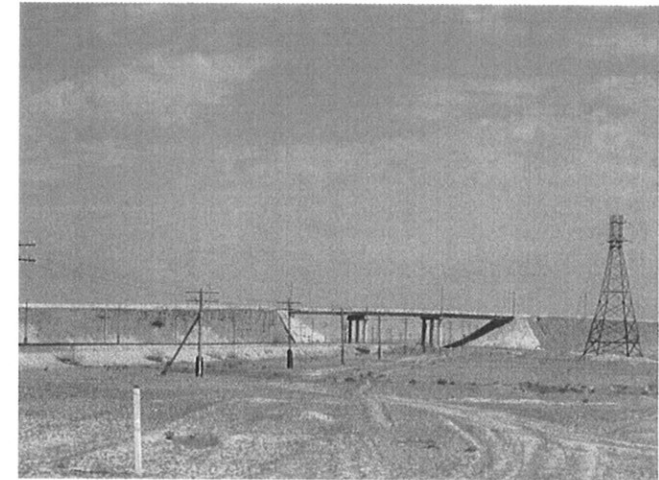
**Km 278 bridge 2 x 6m section**

**All in good condition.**

**Km 292 Railway bridge with available 10km by pass through village of Kazandzhik.**

**(There is one electrified railway crossing with low mass communication lines to be negotiated and one 110kv HT line of only 7.3m clearance.)**

**Km 295 HT lines 110kv 7.5m clearance**



(Rail crossing on by pass)

Km264.0      3 x 1 4 m の橋。

Km272.0      2 x 1 4 m の橋。

Km275.0      2 x 1 4 m の橋。

Km277.0      2 x 6 m の橋。

Km278.0      2 x 6 m の橋。

Km278.0      1 x 1 4 m の橋。

Km282.0      3 x 1 4 m の橋。

Km274.0      2 x 1 4 m の橋。

Km278.0      2 x 6 m の橋。

上記の橋は全て状態は良好。

Km292.0      線路を渡る橋あり。1 0 Km ある Kazandzhik 村を通るバイパスあり。  
(うえに電線の有る鉄道線をとおり。1 1 0 KV のでんせん頭上 7. 3 m)

Km295.0      1 1 0 KV 電線頭上 7. 5 m。