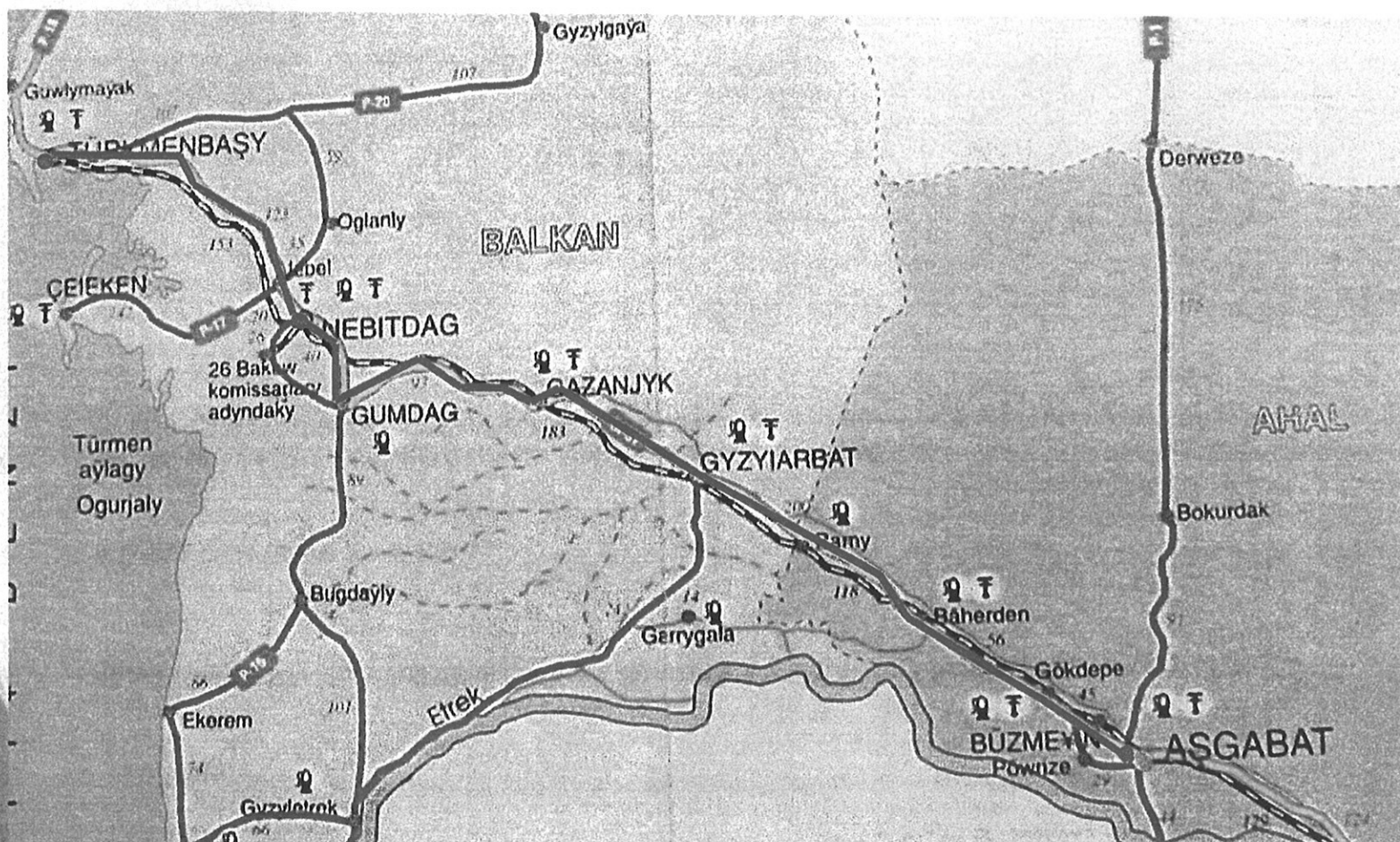


## Section 6 Turkmenbashi Port to Ashgabat – Kms 620



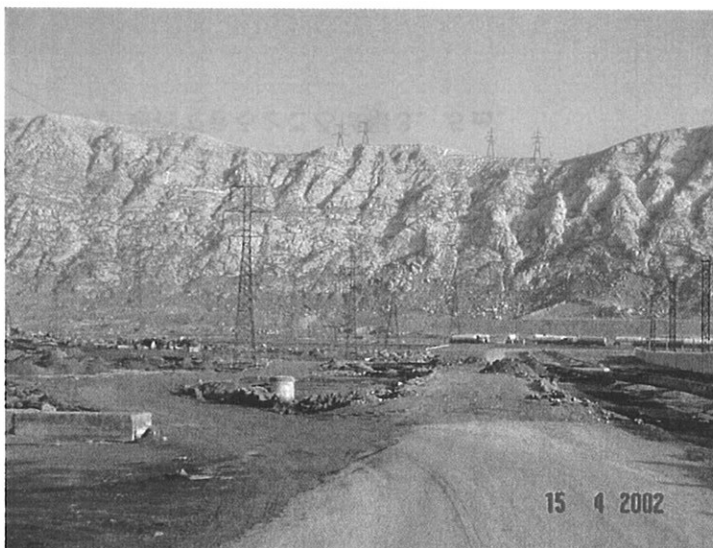
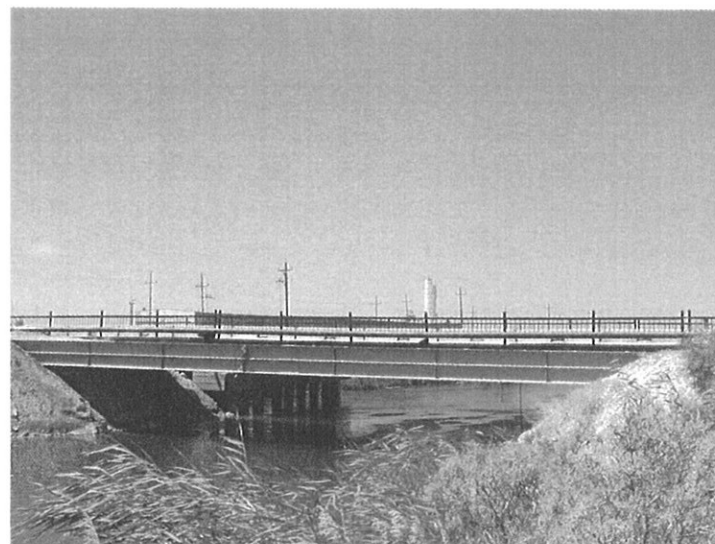
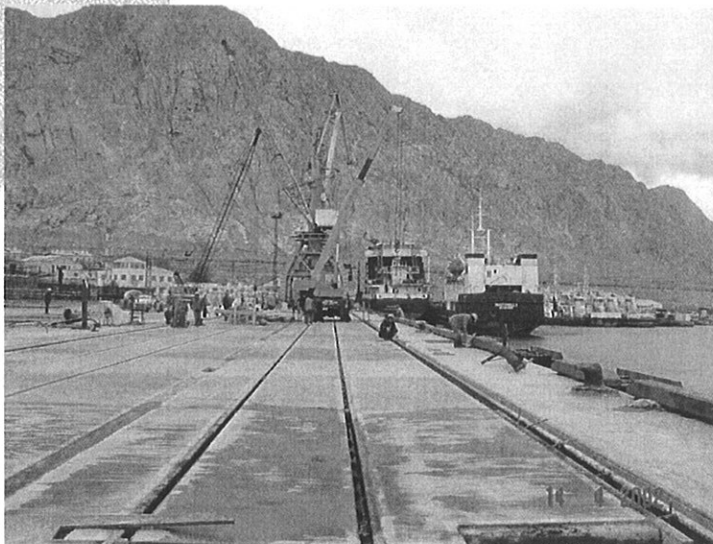
**Km 0**  
**Turmenbashi Port**  
 under reconstruction.  
 To be completed end  
 2002.

**Km 7** pass under HT  
 lines of krw power  
 station at 8-9 m ht.

**Km 8** heavy lift by  
 pass bridge previously  
 used for 460 ton  
 transport.

**Km 9** area behind  
 refinery requiring  
 constant consolidation.  
 To be permanently  
 repaired before 2002  
 ending.

**Km 11** pass under  
 pipe rack.  
 6.2m clearance under  
 outer obstructions with  
 7m x 3.5m wide  
 through middle section



- Km0.0      トルクメンバシ港  
現在建設中。2002年末完成予定。
- Km7.0      トルクメンバシ発電所につながる送電線が  
頭上8～9m。
- Km8.0      以前460MTの貨物を運ぶのに使われた橋。
- Km9.0      精油所の裏手。地面を固める必要あり。  
2002年末までに固める予定。
- Km11.0      6.2m頭上にパイプ。通行できる場所は幅3.5m。