

Km 65 controlled railway crossing electric power line at 5.4m.

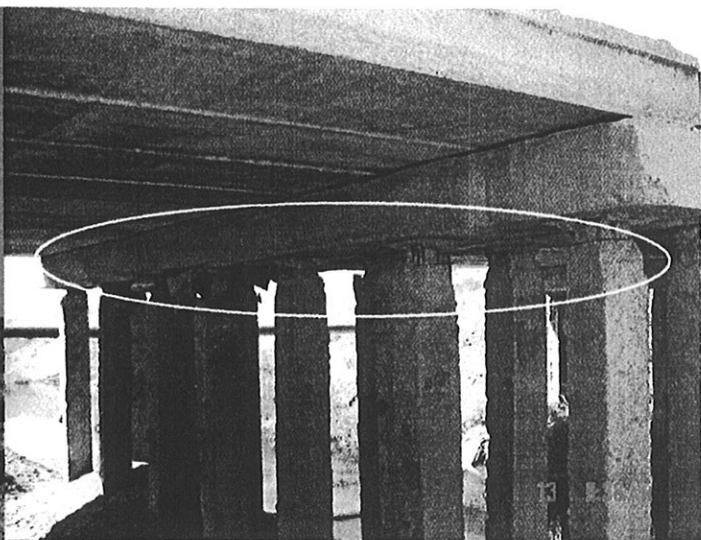
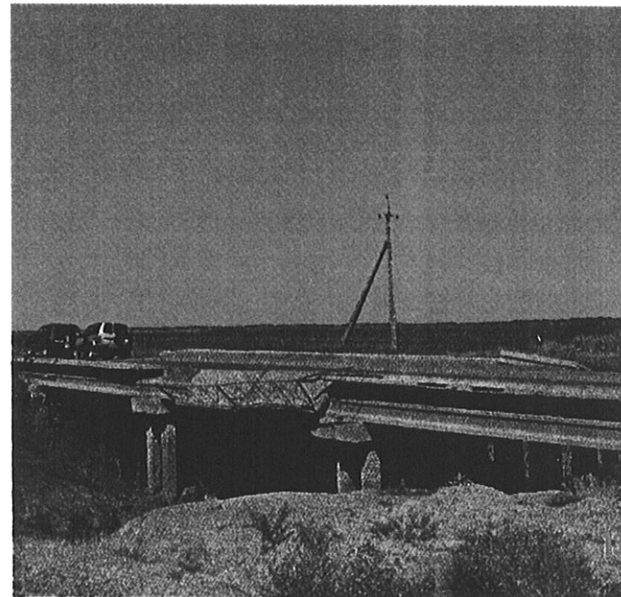
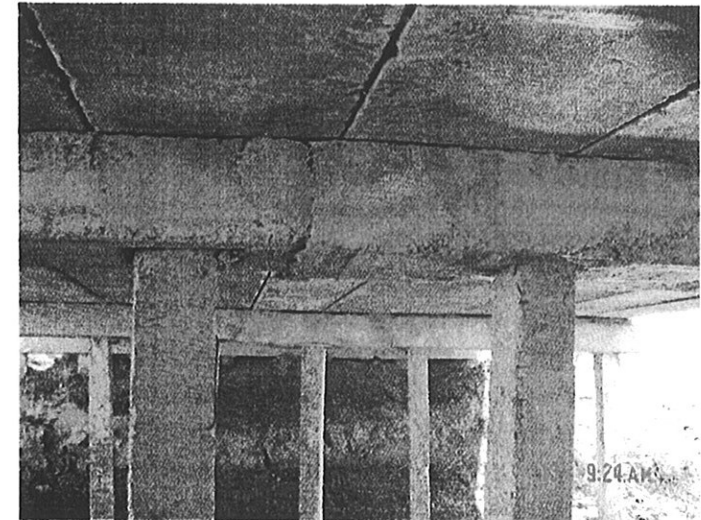
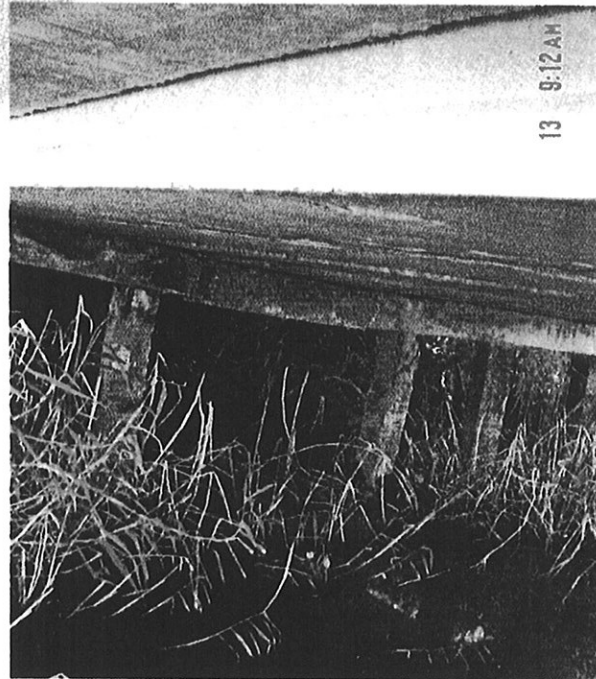
Km 70 Bridge 3 x 6m section

Km 75 Bridge 3 x 9m section
And one 4 x 6m with need of repair due to column deterioration.

Km 84 Bridge 3 x 9m section. Transport to keep to left of centre due to difference in column quality.

Km 89 Bridge 3 x 9m section.
Km 90 Bridge 3 x 9m section.

Km 91 Bridge 5 x 9m section
This bridge looks in very bad condition due to collapsed walkways. Deck beams are solid concrete and piers are with double columns support. Top of columns have bad spalling but can be repaired easily.



- Km65.0 鉄道踏み切り。頭上5.4mに電線。
- Km70.0 3x6mの橋。
- Km75.0 3x9mの橋。はりがいたんでいるため修繕必要。
- Km84.0 3x9mの橋。橋げたが道の右側が痛んでいるため、左によること。
- Km89.0 3x9mの橋。
- Km90.0 3x9mの橋。
- Km91.0 5x9mの橋。この橋は歩道が壊れているため非常に悪い状態に見えるが、車道のところは橋げたがダブルにつけているためみためよりよい状態。
道路の表面のひびは簡単に修繕できます。

Km 92 Bridge 3 x 9m section
Some column tops to be
repaired.

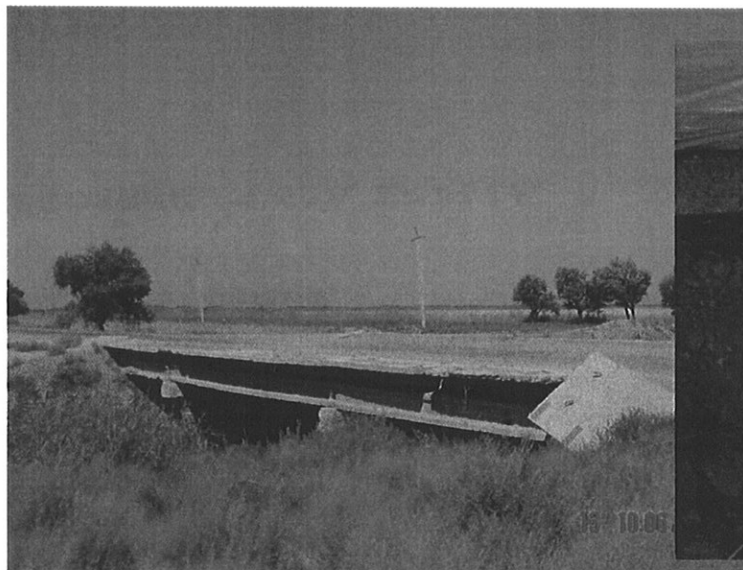


Km 94 Bridge 3 x 9m section.

Km 97 Bridge 3 x 9m section.

Km 98 Bridge 3 x 9m section.

Km 100 Bridge 3 x 9m section
requires some repair to three
column tops.



Km92.0 3 x 9 m の橋。橋げたの上の方は修繕必要。

Km94.0 3 x 9 m の橋。

Km97.0 3 x 9 m の橋。

Km98.0 3 x 9 m の橋。

Km100.0 3 x 9 m の橋。橋げたの上の方は修繕必要。