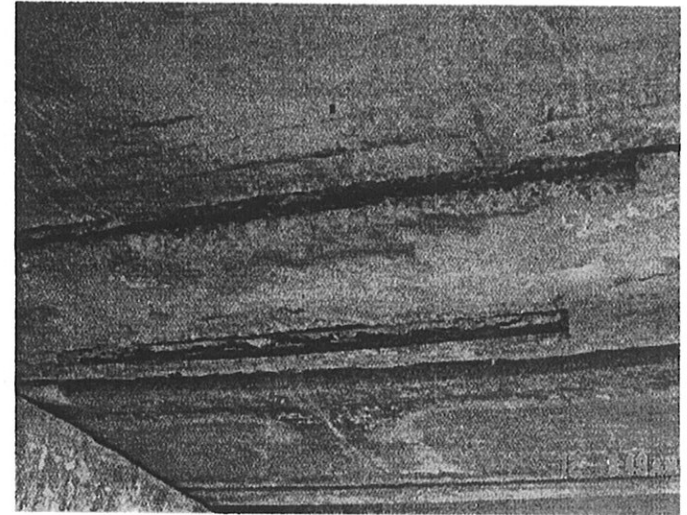
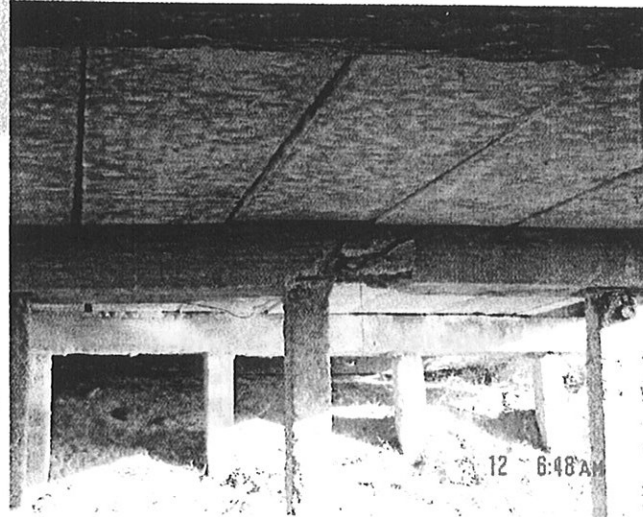


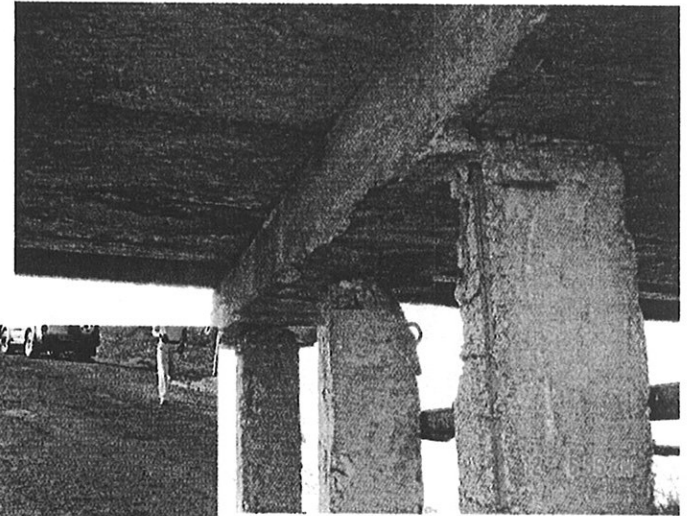
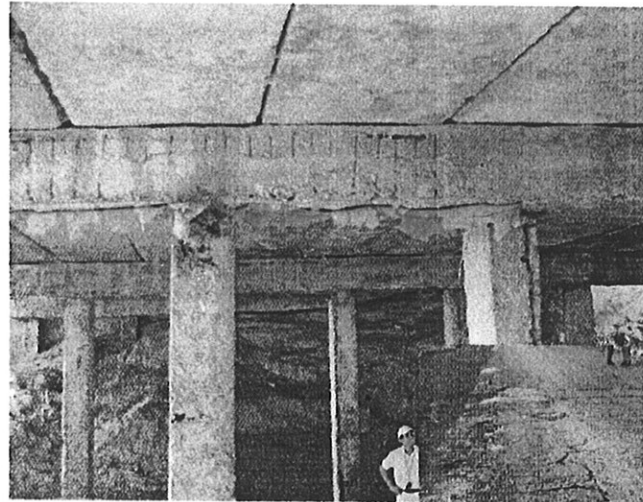
Km 0
Grid reference.
37.35.00N
61.47.37E

Road category 2
7m wide but in good condition

Km 0.1 Bridge 4 x 6m section.
Bridge requires repair due to
broken pier and spalling bridge
beams.



Km 8 Bridge 4 x 6m section.
Requires some repair to
column tops



Km0

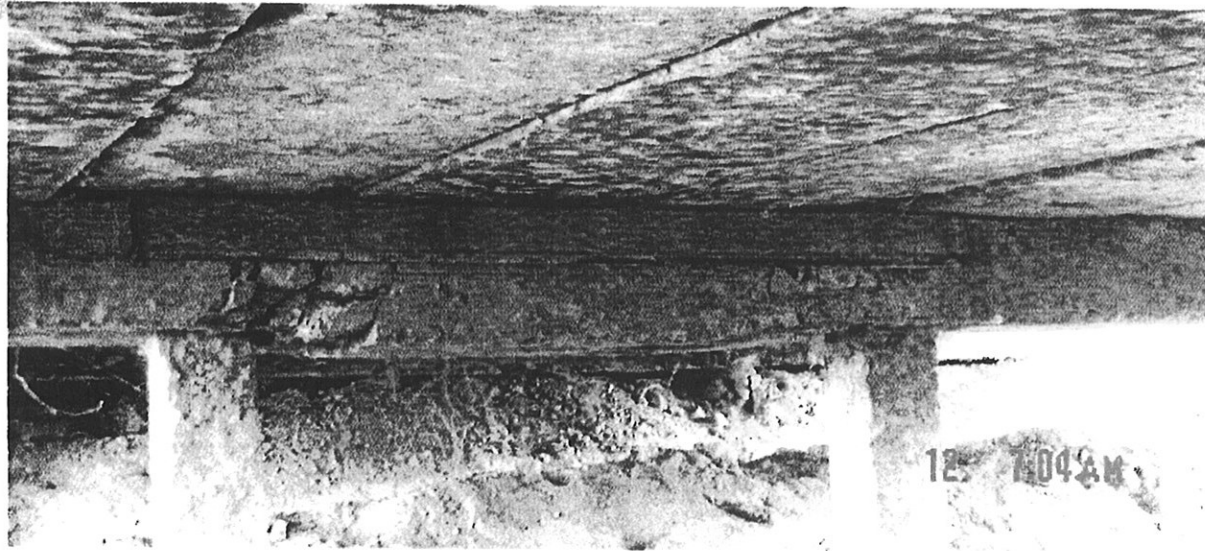
道路カテゴリー 2
幅 7 m しかし状態良好

Km0.1 4 x 6 m の橋（6 m の長さの板 4 枚）。この橋は橋げたとはりが壊れているため修繕必要。

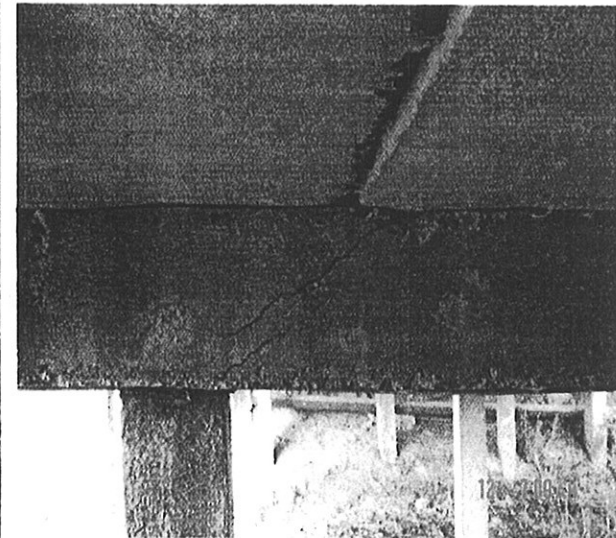
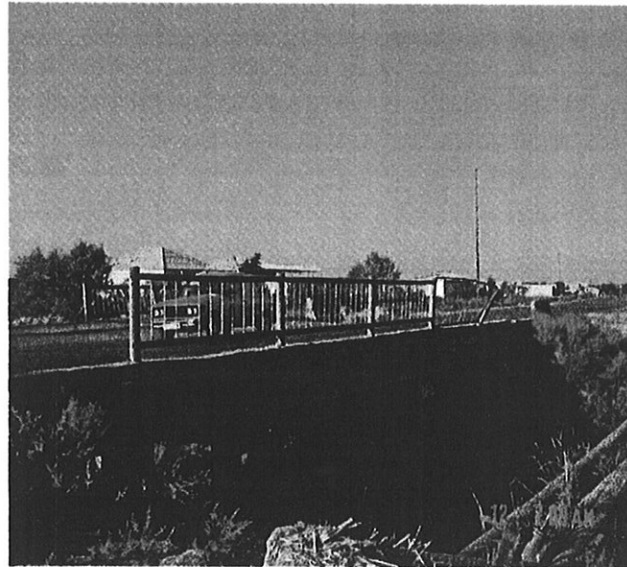
Km8.0 4 x 6 m の橋。橋の上の道路修繕必要。

Km 10 manned railway crossing
Non electric.
Km 10.2 Ht lines 220kv at 10m+

Km 11 Bridge 3 x 6m section.
Bridge has previously been
repaired by insertion of a sheet
pile on top of bridge pier.



Km 12.3 Bridge 4 x 6m section.
Bridge requires repair to piers
due to cracking.



- Km10.0 有人鉄道踏み切り。電線なし。
- Km10.2 220KV 電線頭上10m。
- Km11.0 3x6m の橋。この橋は以前橋げたの上に鉄板をつけて補強された。
- Km12.3 4x6m の橋。橋げたにひびが入っているため、修繕必要。