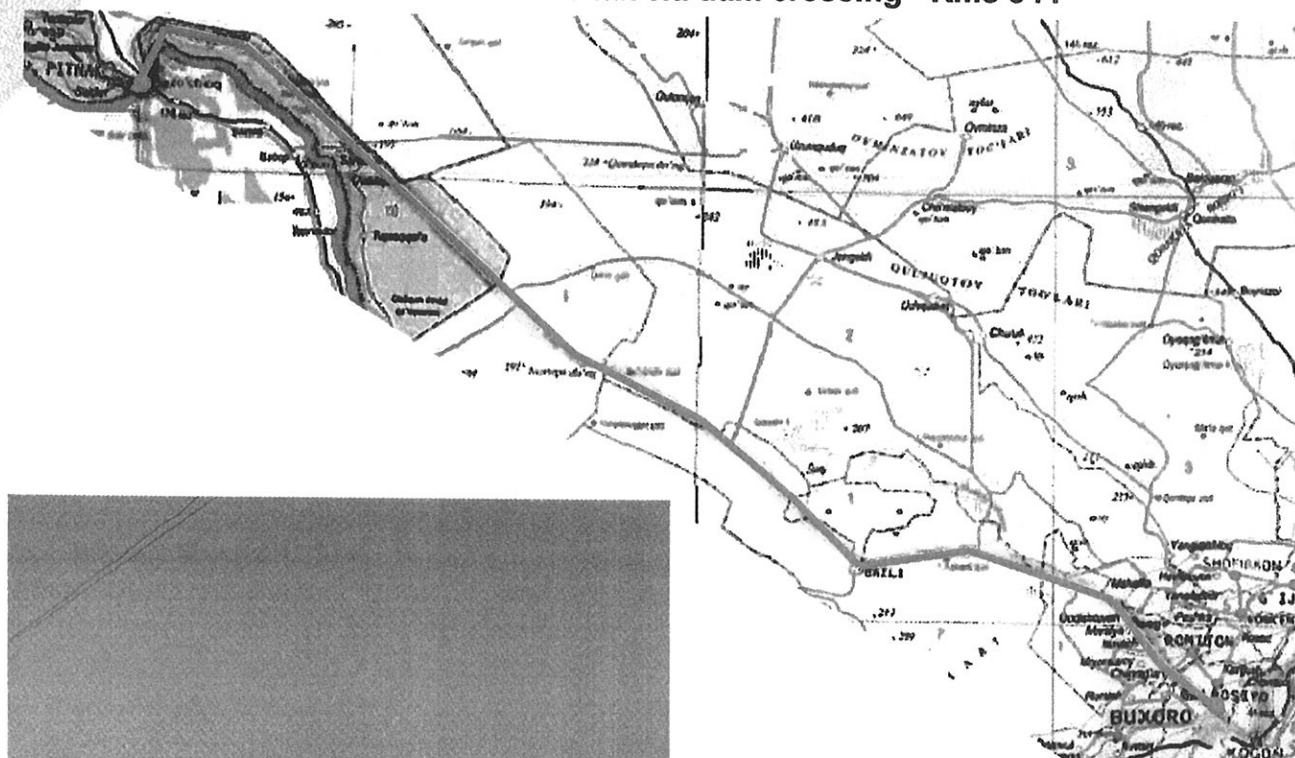


Km 0

Grid reference 39. 53.25N
64. 18.20E

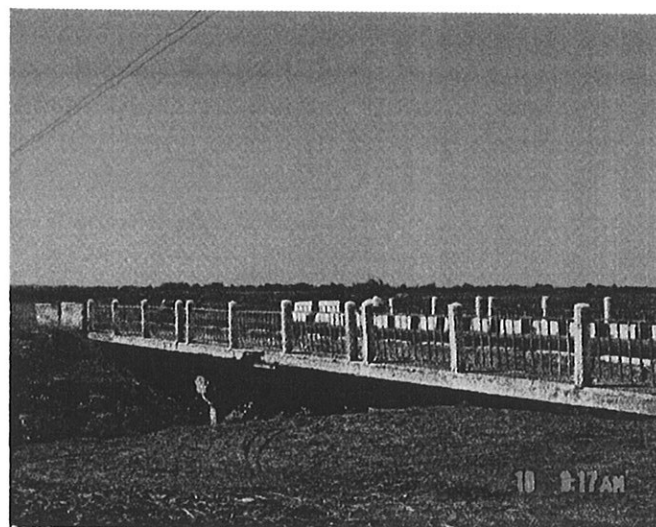


Section 3 Bukhara to Gazachak via dam crossing - Kms 344



Km 4.5 Bridge 2 x 9m section.
Possible repair required due to
some cracking of bridge beam.

Km 7 Ht lines 2 x 110kv



Km4.5 2枚構造一枚9mの橋。
はりにひびが入っているため、修繕が必要かもしれない。

Km7.0 110KV電線2本頭上。

Km 11 Bridge 3 x 9m section
This bridge previously repaired but needs more attention.

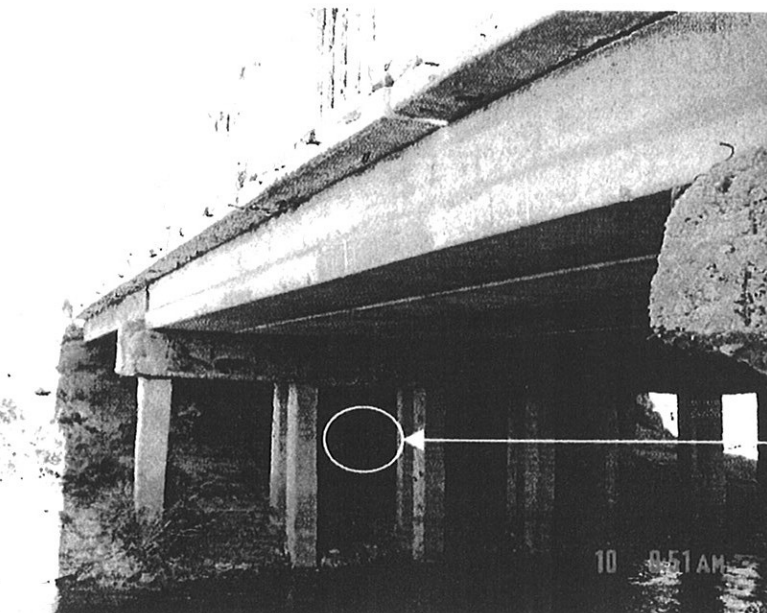
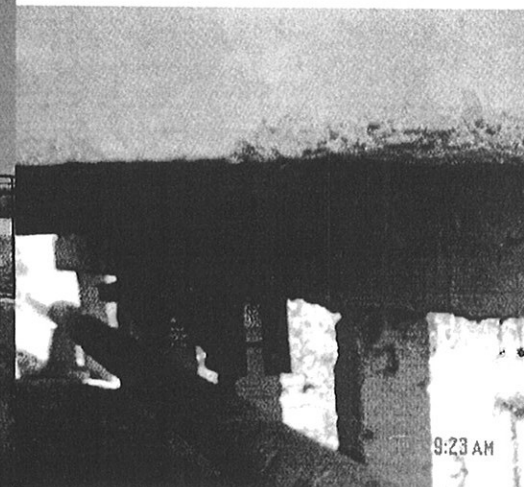
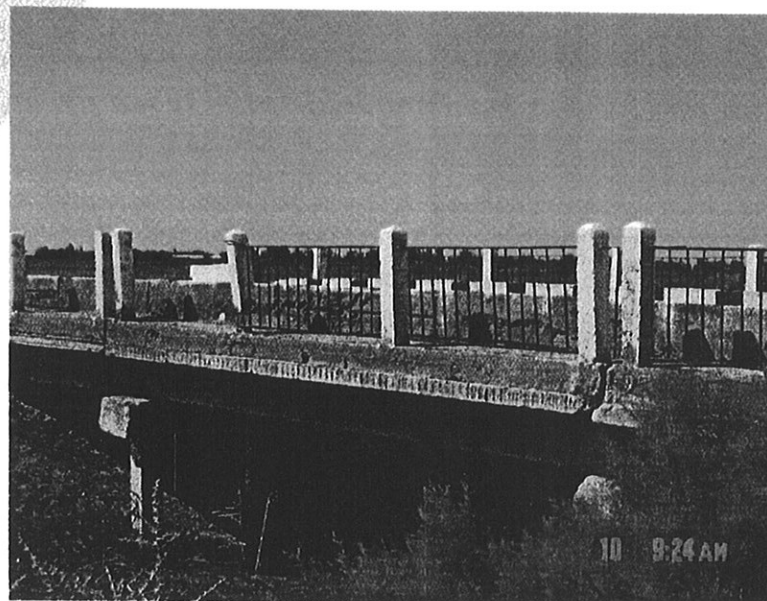
Km 13 Bridge 3 x 9m section
Similar to above and needs attention.

Km 16 Bridge 2 x 9m.

Km 20 Bridge 3 x 14m section.

Km 22 Ht line 110kv at 9m+

Km 37 Bridge 3 x 9m section
considered suspect as there were concrete block placed under approach and exit sections as reinforcement although not touching.



Km11.0 3 x 9 m の橋。この橋は以前修繕された :

Km13.0 3 x 9 m の橋。 上記と同じく注意が必要

Km16.0 2 x 9 m の橋。

Km20.0 3 x 1 4 m の橋

Km22.0 1 1 0 KV 電線 9 m 頭上。

Km37.0 3 x 9 m の橋。橋入り口及び出口の橋げた
があるため、橋の強度に疑問があり。