

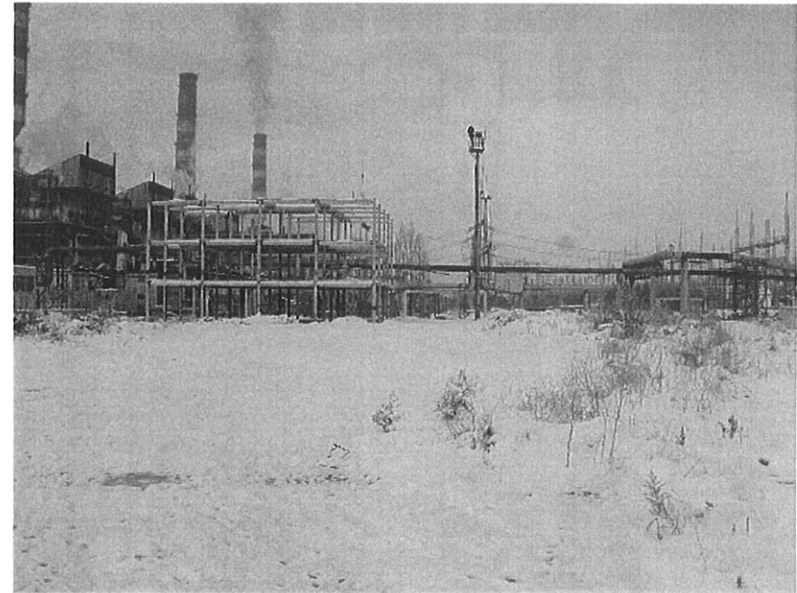
Section 1: Tashkent to Samarkand 327Kms



Tashkent Power station

41 22.68N

69 22.33E



Km 0

Proposed site for power station extension.

Access is through road 250m long with minimum 7m clear width and 6m height under various overhead pipes.

Turning left from road of 13m width. Clearance at corner/turn suitable for 12 axle with removal of one tree.

