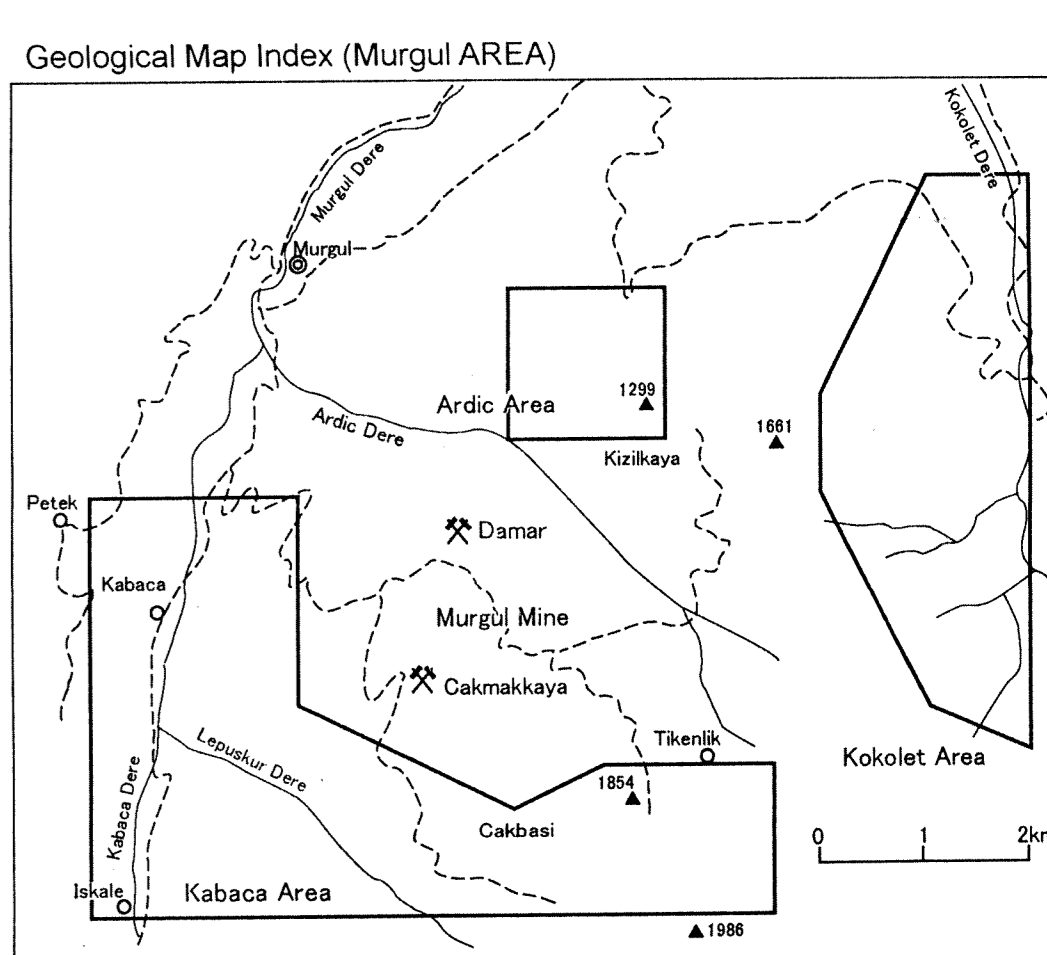
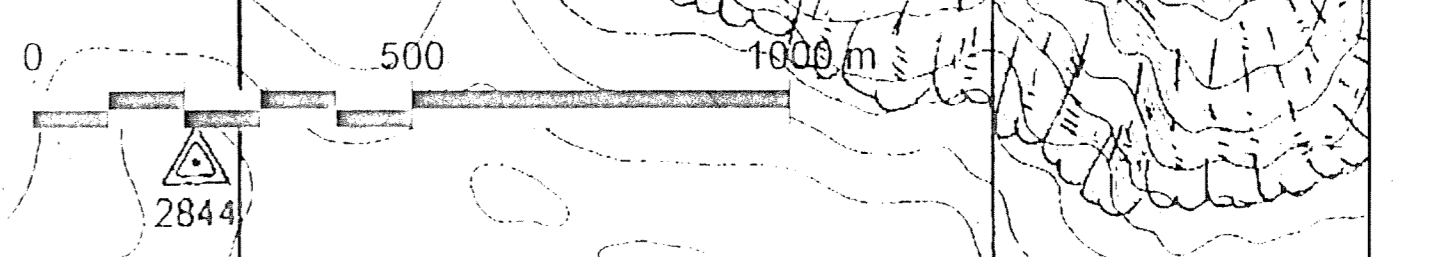


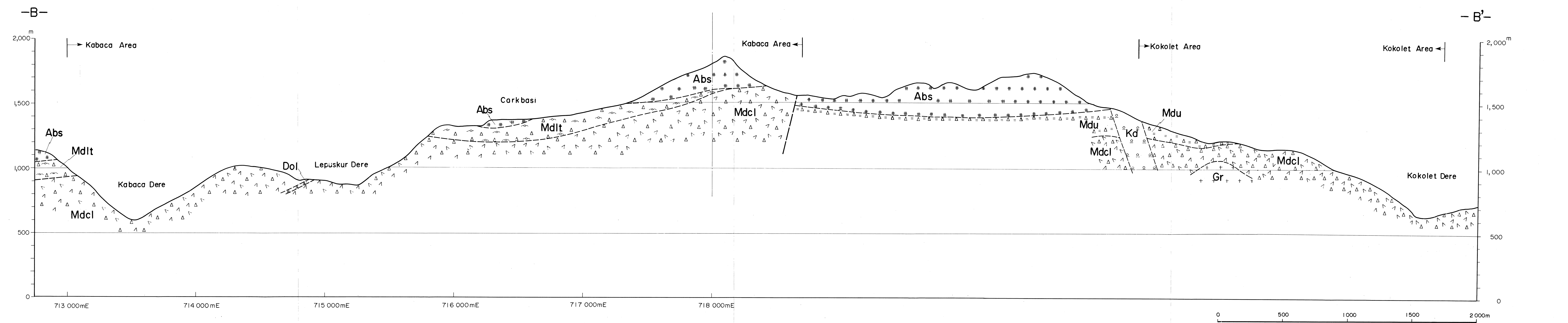
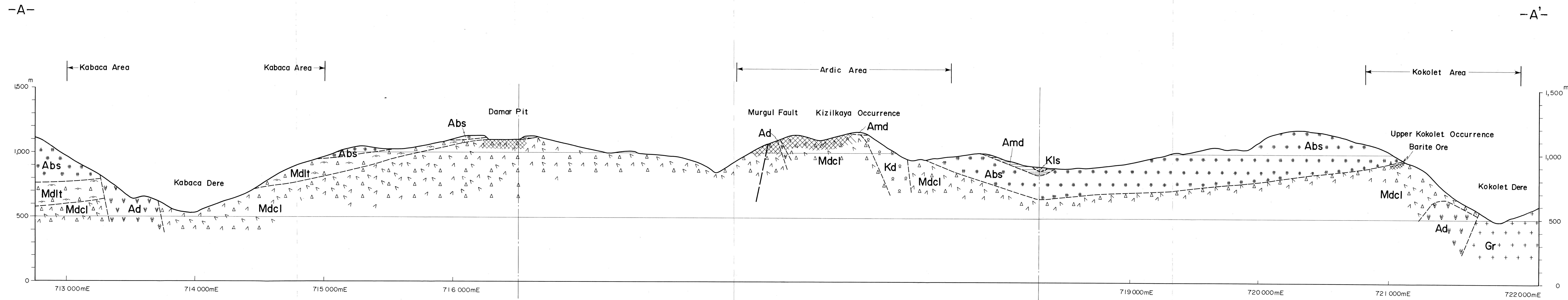
JAPAN INTERNATIONAL COOPERATION AGENCY
 METAL MINING AGENCY OF JAPAN
 JANUARY 2004



Legend

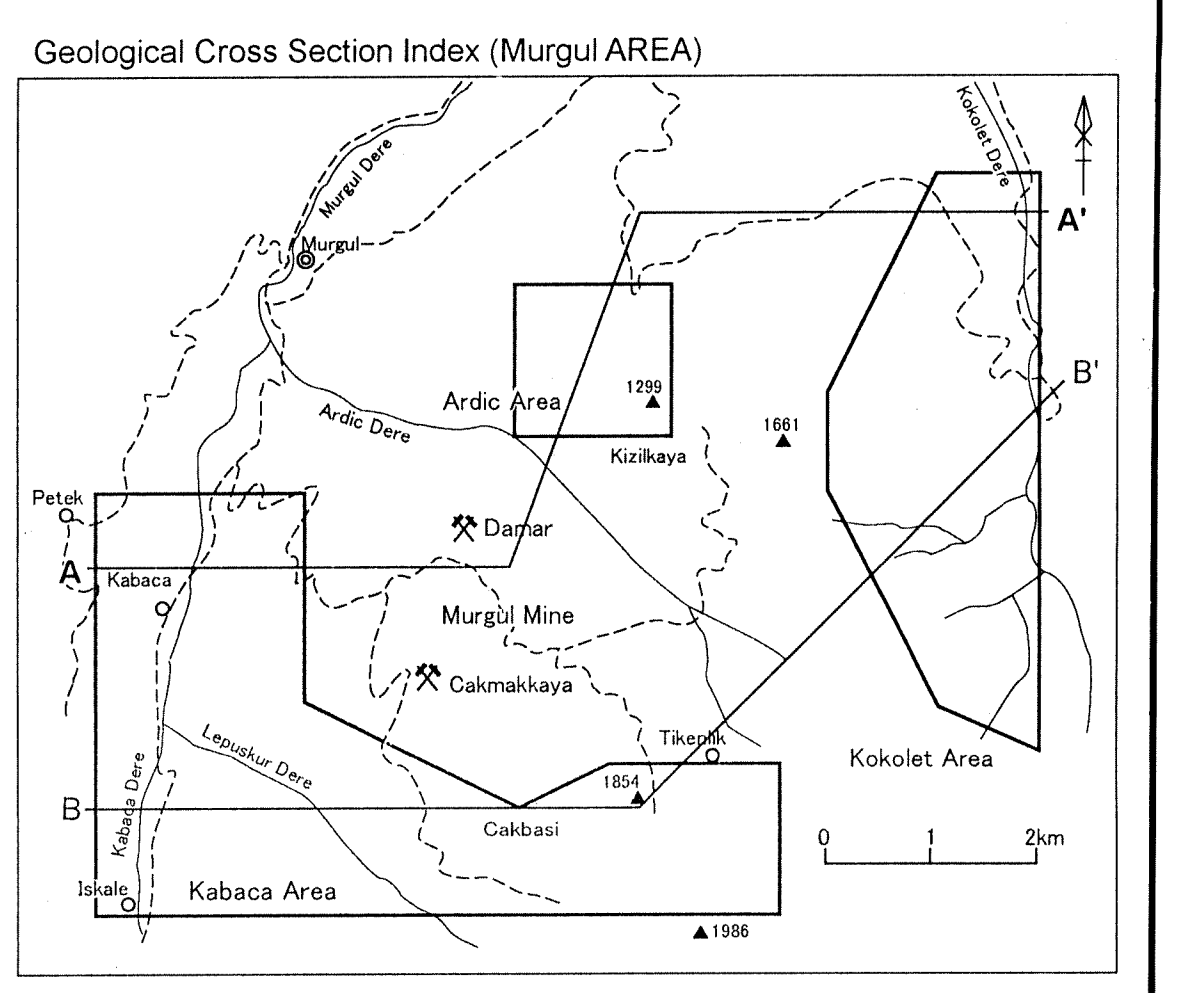
| | |
|----------------------|------------------------|
| Kure Formation | Karatze Dacite |
| Mudstone | Nevaditic Pyroclastics |
| Limestone | Dolerite |
| Ardic Formation | Andesite |
| Siltstone | Granitic rocks |
| Basaltic rocks | Strike and Dip |
| Murgul Formation | Fault |
| Dacitic Pyroclastics | Mineralization Zone |
| Dacitic Pyroclastics | |
| Dacite lava | |
| Kabasa Formation | |
| Basic Volcanic Rock | |





PL 4
 REPORT
 ON
 THE MINERAL EXPLORATION
 IN
 THE HOPA AREA,
 PHASE II
 GEOLOGICAL CROSS SECTION OF THE MURGUL AREA
 (SCALE 1: 10,000)

JAPAN INTERNATIONAL COOPERATION AGENCY
 METAL MINING AGENCY OF JAPAN
 JANUARY 2004



Legend

| | | |
|--|---------------------|------------------------|
| Kiro Formation Karatepe Dacite | Mudstone | Nevaditic Pyroclastics |
| Limestone | Nevadite | |
| Ardic Formation Siltstone | Dolomite | |
| Basaltic rocks | Andesite | |
| | Granitic rocks | |
| Murgul Formation Dacitic Pyroclastics | Strike and Dip | |
| Dacitic Pyroclastics | Fault | |
| Dacite lava | Mineralization Zone | |
| Kabaca Formation Basio Volcanic Rock | | |