

**Legend**

- Landslip area
- Boundary of Sub-watersheds

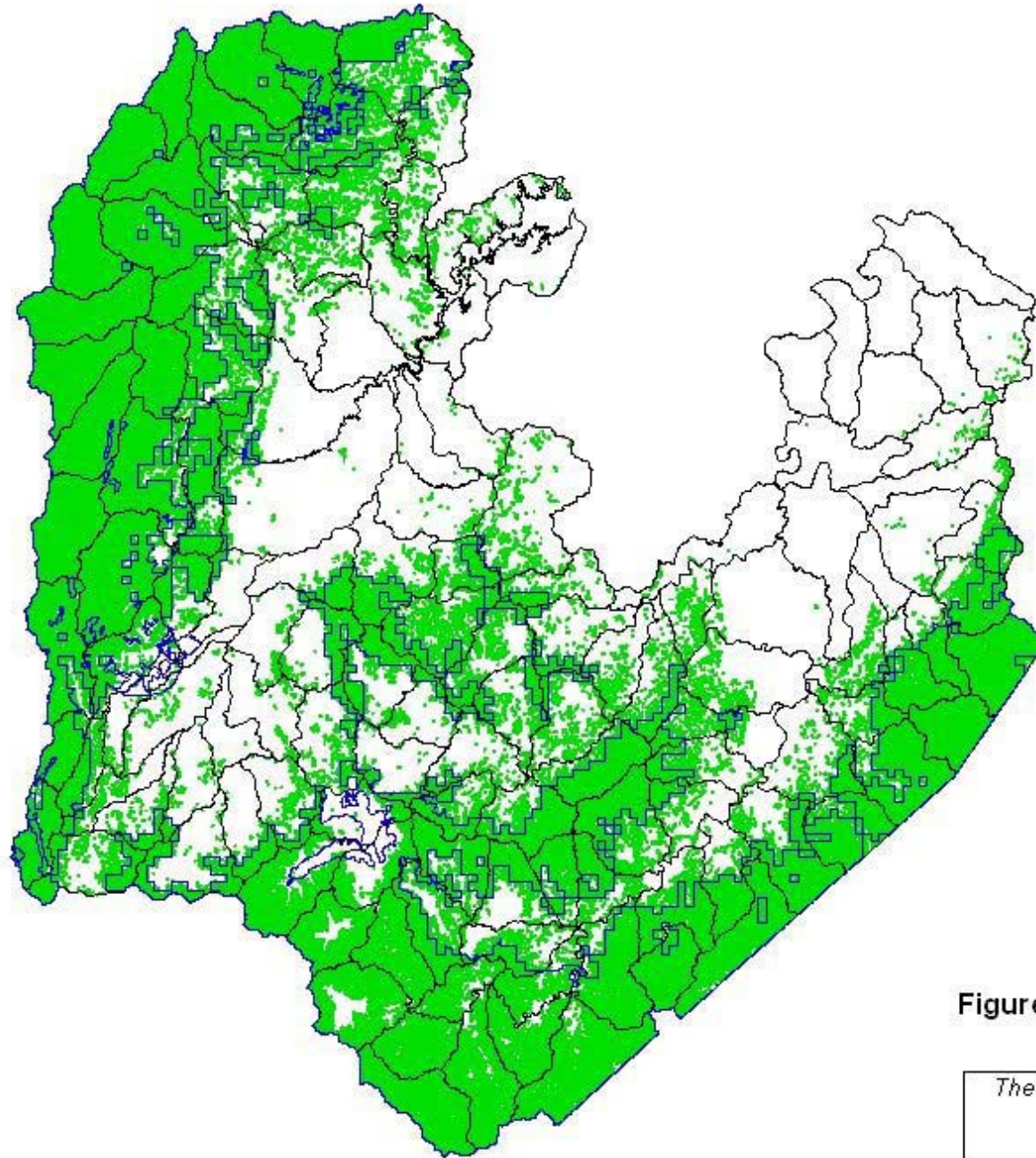
**Figure 4.9.2 Landslip Map**

*The Master Plan Study for Watershed Management  
in Upper Magat and Cagayan River Basin  
in the Republic of the Philippines*




JAPAN INTERNATIONAL COOPERATION AGENCY

Source: JICA Study Team

0 10 20 30 40 50 Kilometers



Legend

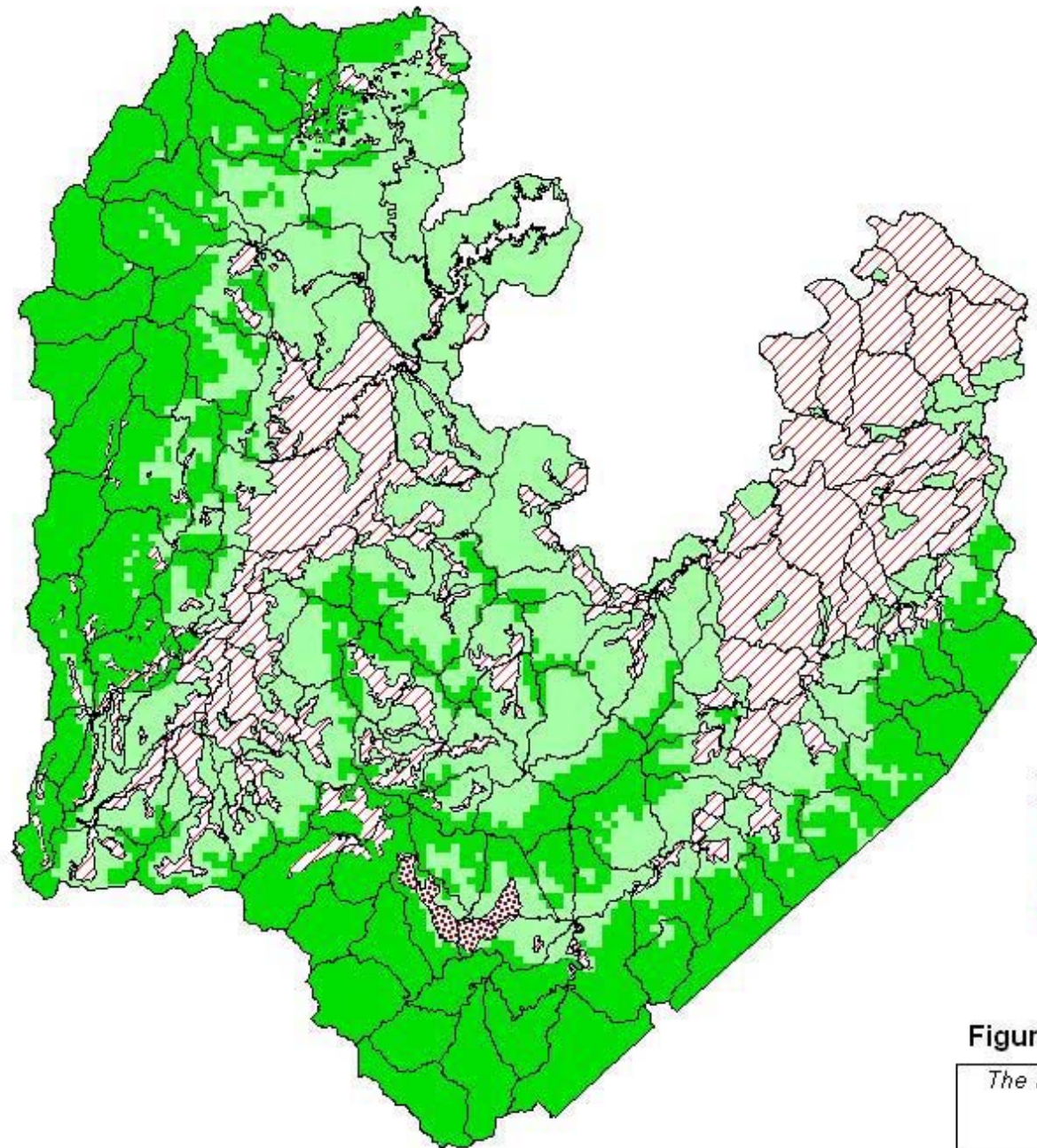
-  Area under the NIPAS Policy
-  Proposed Protected Areas
-  Boundary of Sub-watersheds

**Figure 8.1.1 Areas under the NIPAS Policy and Proposed Protected Area**

*The Master Plan Study for Watershed Management  
in Upper Magat and Cagayan River Basin  
in the Republic of the Philippines*

JAPAN INTERNATIONAL COOPERATION AGENCY

Source: JICA Study Team



- Legend
-  A&D
  -  CMR
  -  Proposed Forestland
  -  Proposed Protected Area
  -  Boundary of Sub-watersheds

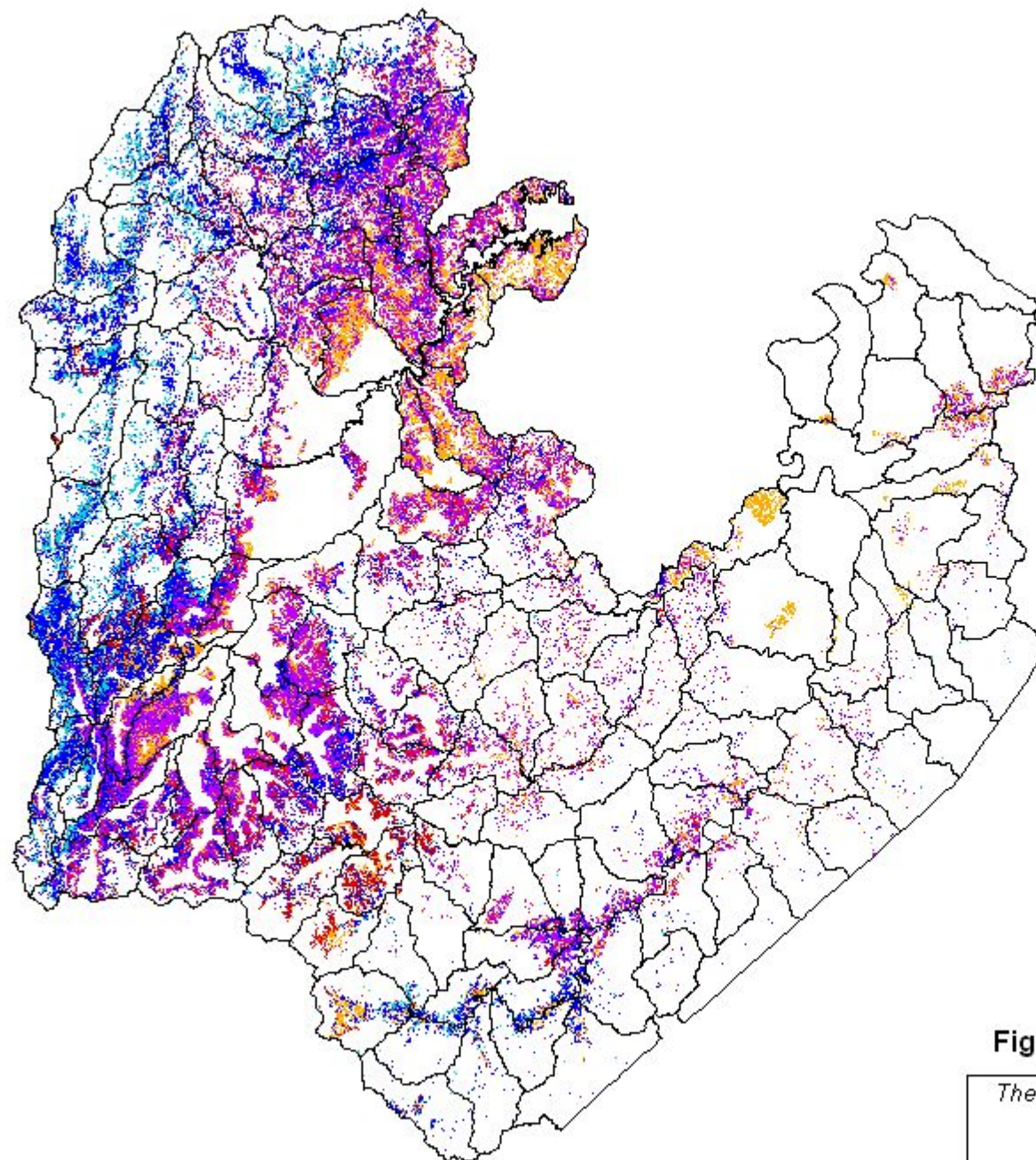
**Figure 8.1.2 Proposed Land Classification**

*The Master Plan Study for Watershed Management  
in Upper Magat and Cagayan River Basin  
in the Republic of the Philippines*

JAPAN INTERNATIONAL COOPERATION AGENCY

Source: JICA Study Team

0 10 20 30 40 50 Kilometers



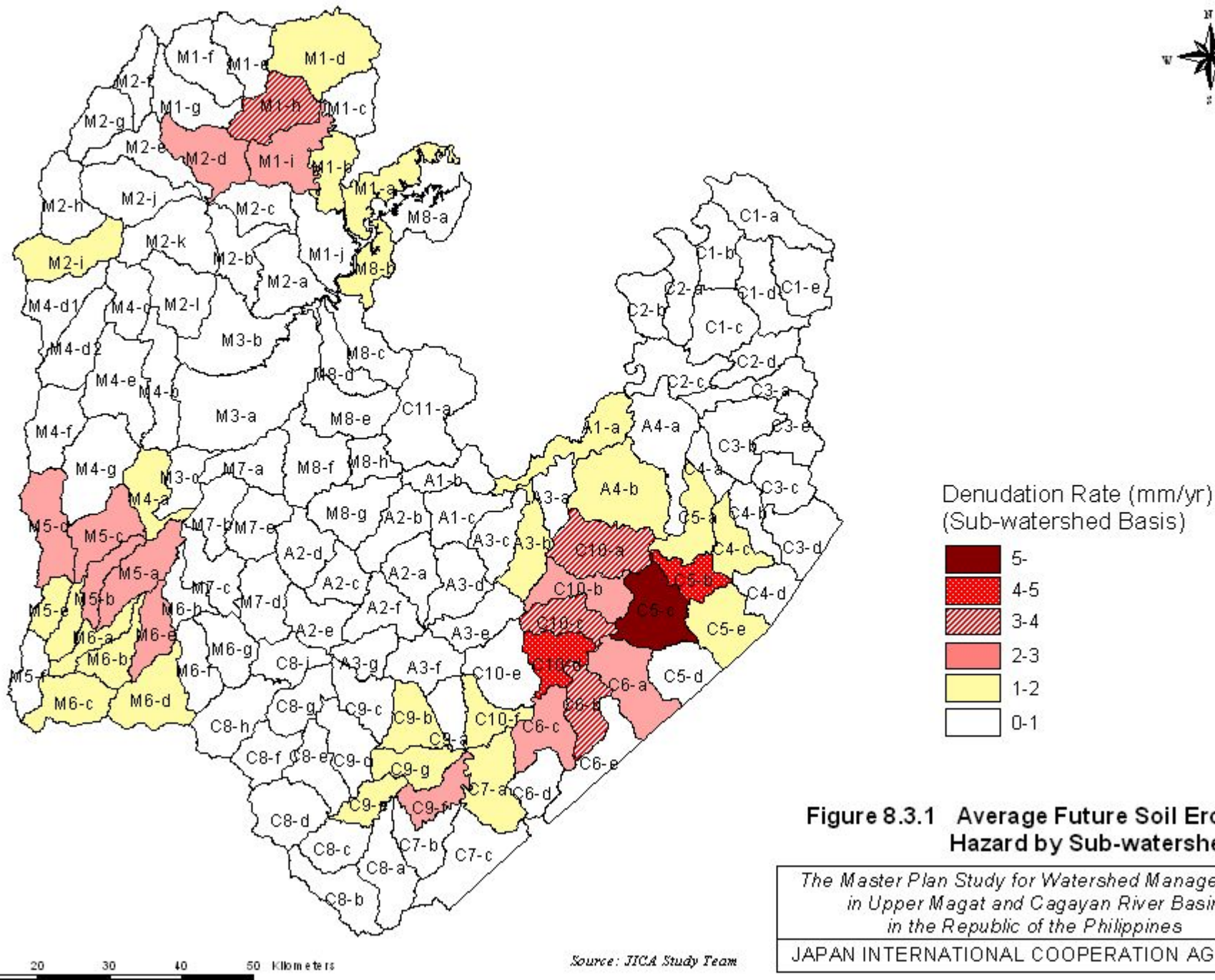
- Legend
- Man made Forest
  - Man made forest (50%) & Residual forest with ANR (50%)
  - Agroforestry
  - Silvopastoral
  - Agricultural land
  - Boundary of Sub-watersheds

**Figure 8.1.3 Proposed Rehabilitation Area**

*The Master Plan Study for Watershed Management  
in Upper Magat and Cagayan River Basin  
in the Republic of the Philippines*

JAPAN INTERNATIONAL COOPERATION AGENCY

Source: JICA Study Team



**Figure 8.3.1 Average Future Soil Erosion Hazard by Sub-watersheds**

*The Master Plan Study for Watershed Management  
in Upper Magat and Cagayan River Basin  
in the Republic of the Philippines*

JAPAN INTERNATIONAL COOPERATION AGENCY

Source: JICA Study Team