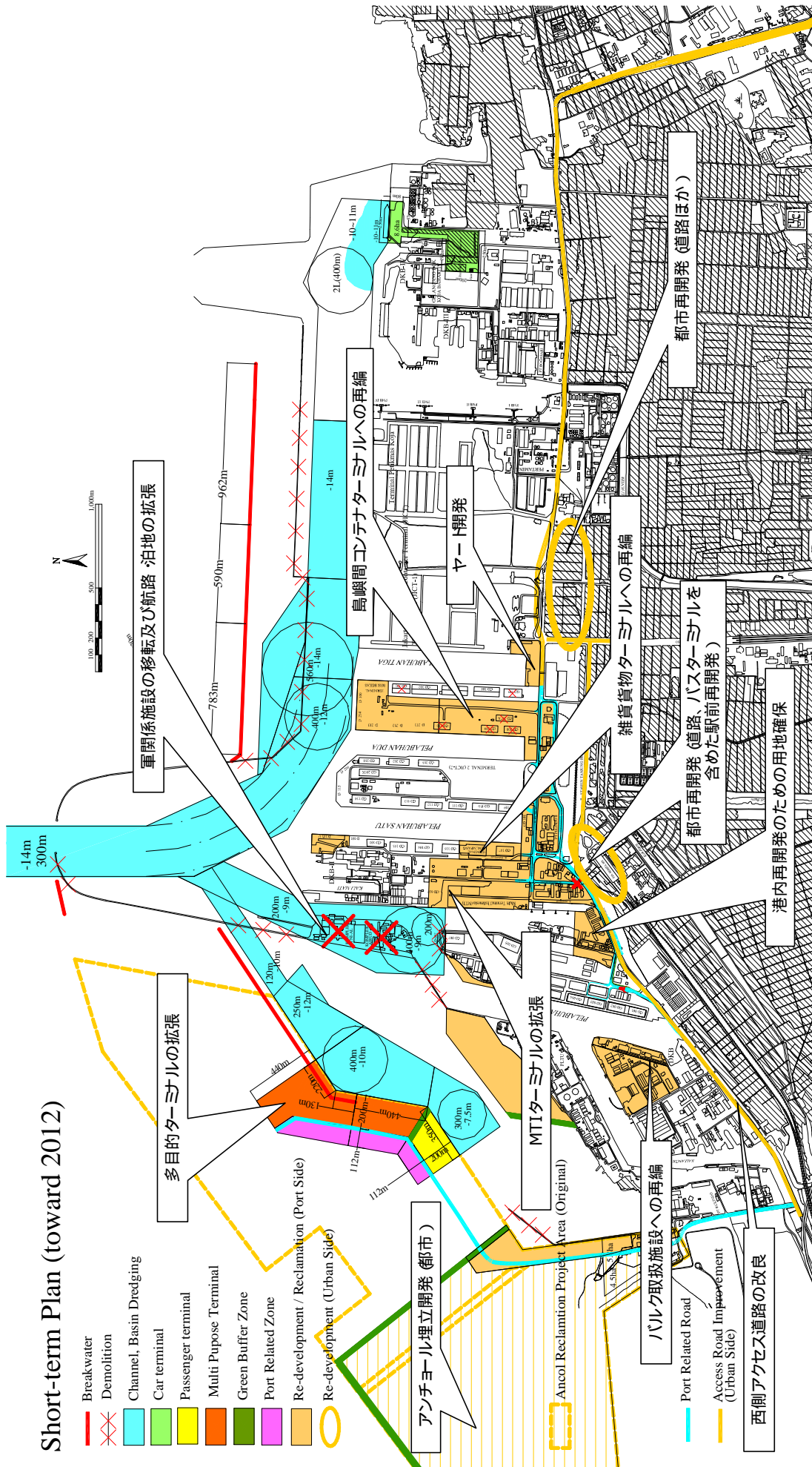
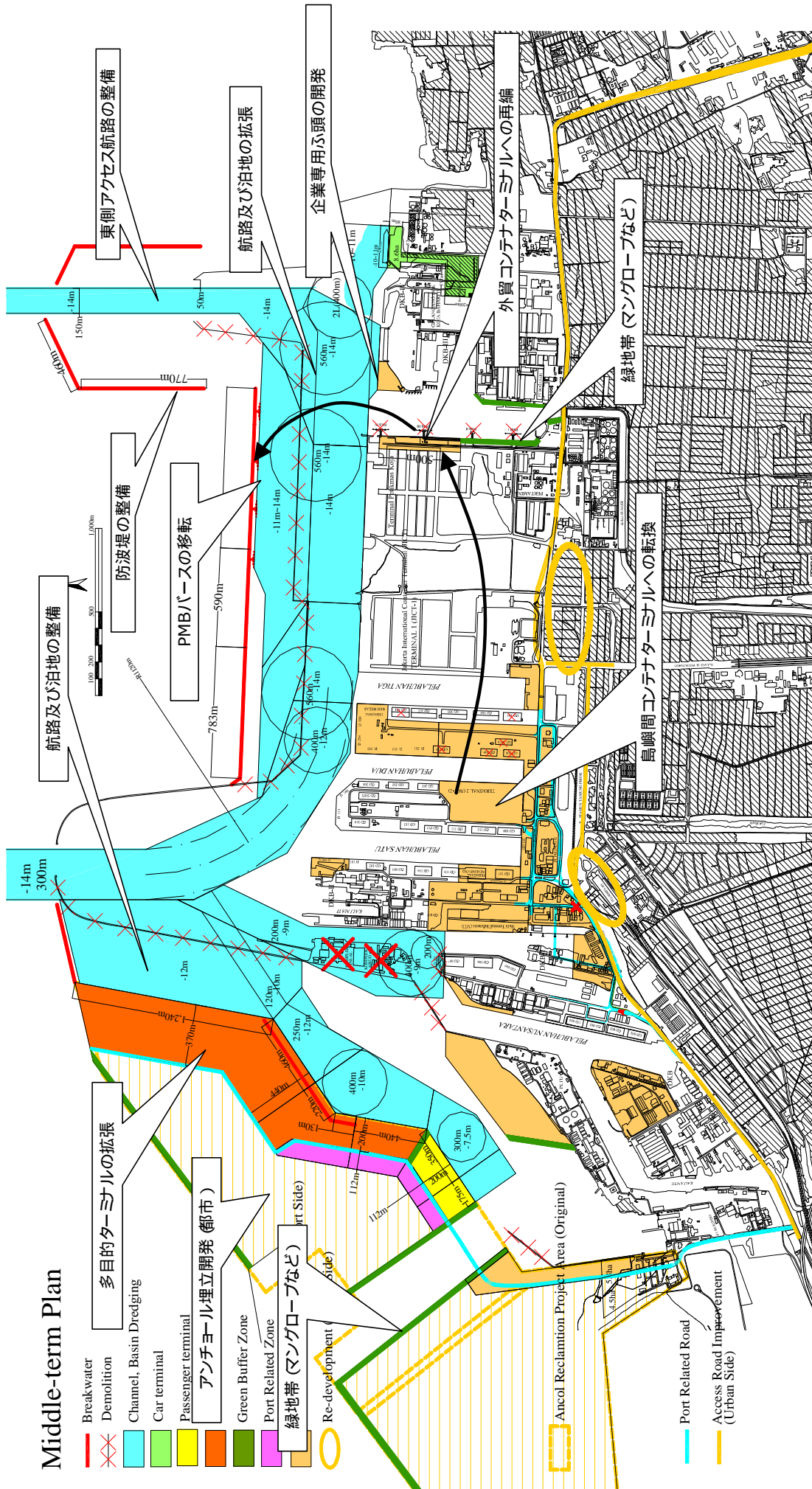


# Short-term Plan (toward 2012)



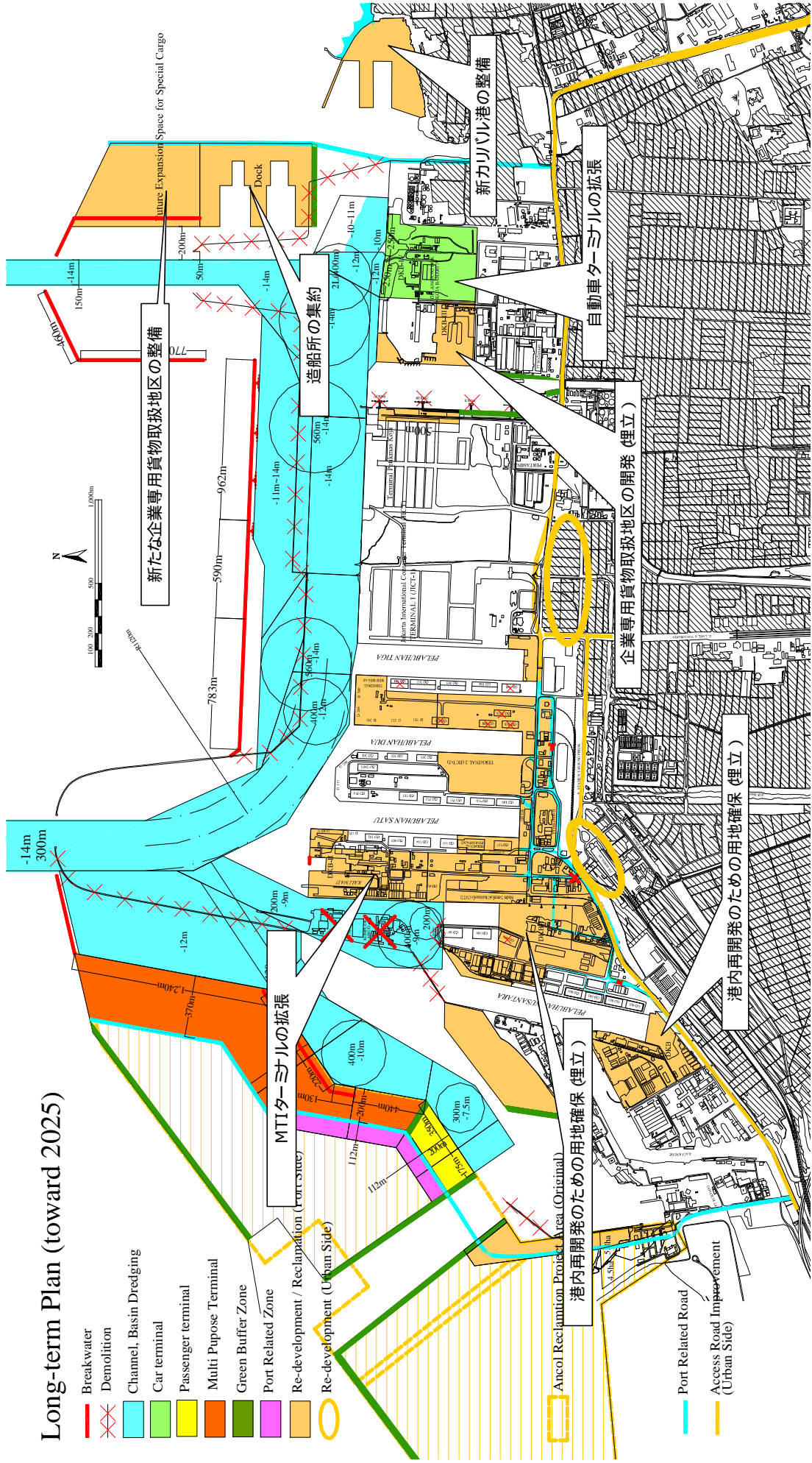
# Middle-term Plan

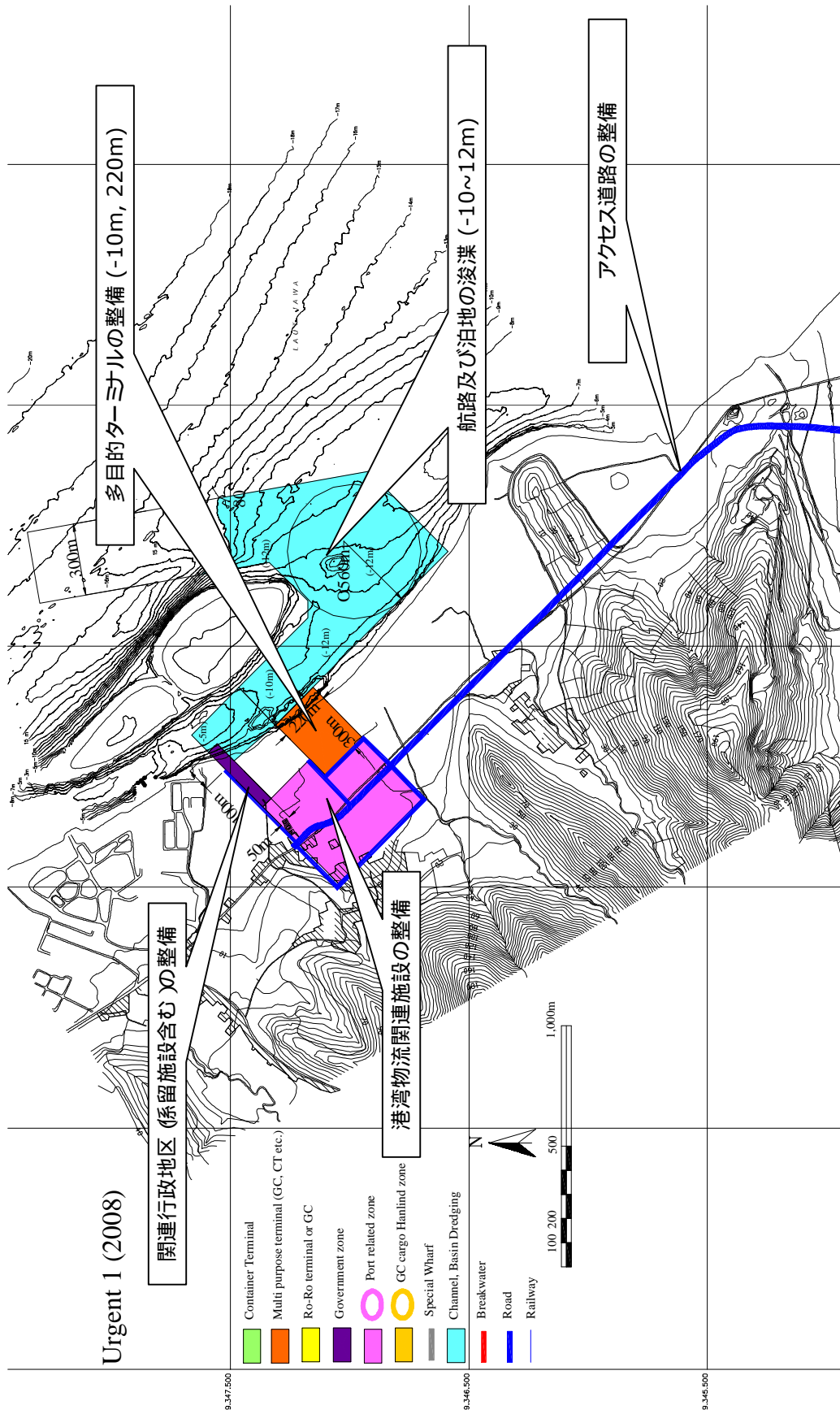


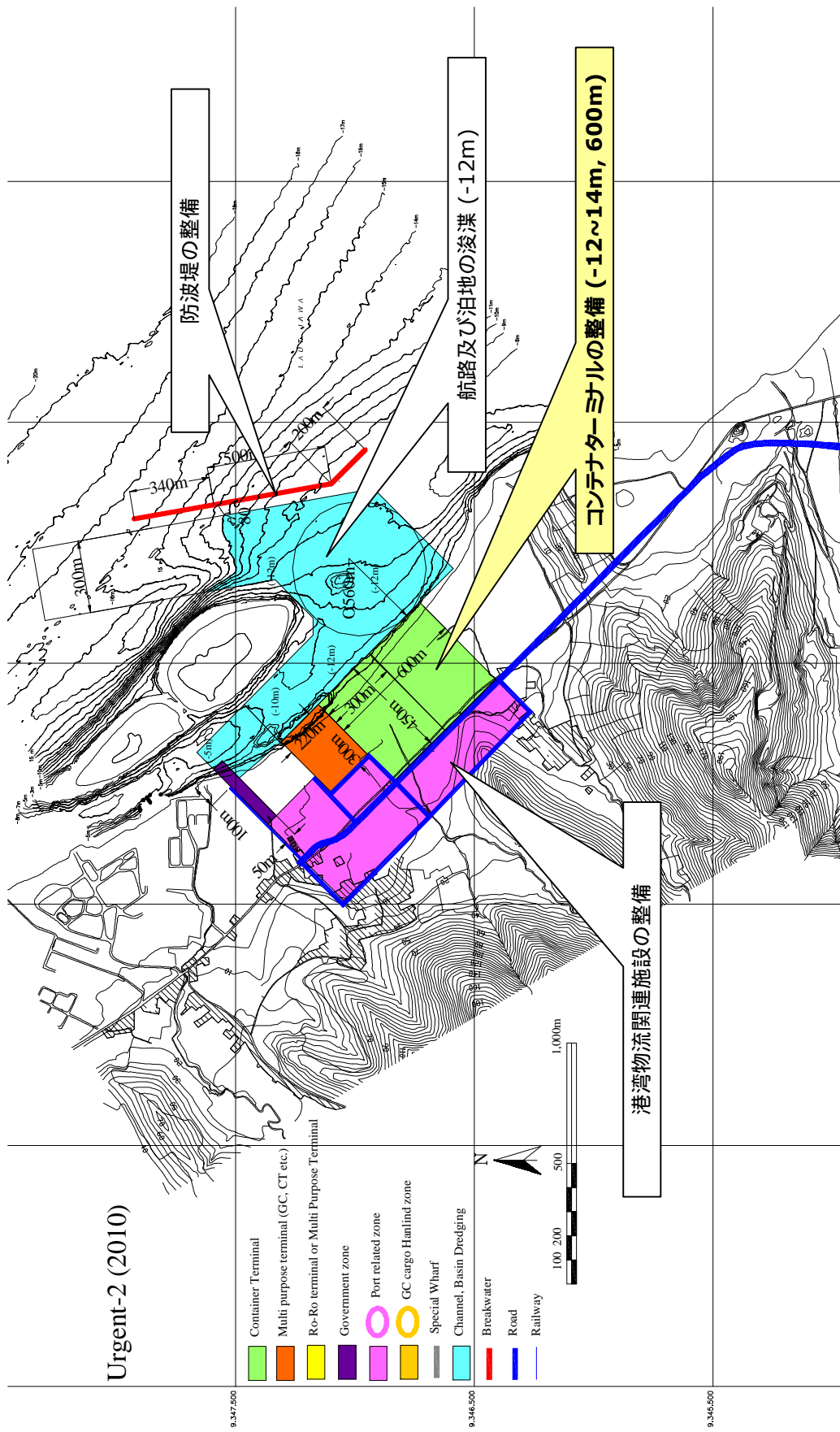
- Breakwater
- Demolition
- Channel, Basin Dredging
- Car terminal
- Passenger terminal
- 多目的ターミナルの拡張
- アンチヨール埋立開発 (都市)
- Green Buffer Zone
- Port Related Zone
- 緑地帯 (マングローブなど)
- Re-development (Urban Side)
- Ancol Reclamation Project Area (Original)
- Port Related Road
- Access Road Improvement (Urban Side)

# Long-term Plan (toward 2025)

- Breakwater
- ✕ Demolition
- Channel, Basin Dredging
- Car terminal
- Passenger terminal
- Multi Purpose Terminal
- Green Buffer Zone
- Port Related Zone
- Re-development / Reclamation (Port Side)
- Re-development (Urban Side)







Short-term Plan (toward 2012)

Ro-Ro ターミナルの整備 (-8m, 200m)

