

Drawings 3-A

Drawings of Proposed Project in the Central Dry Zone

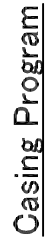
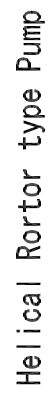
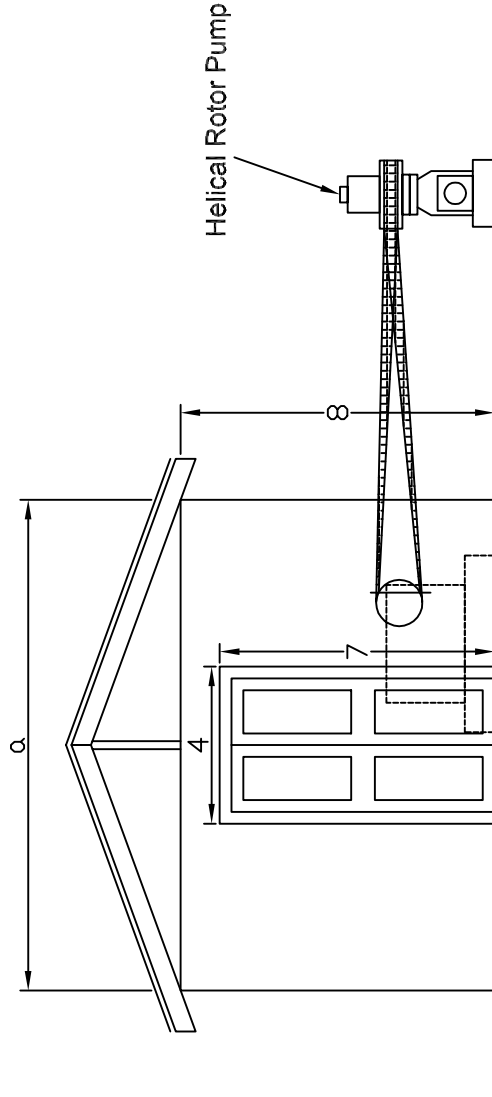
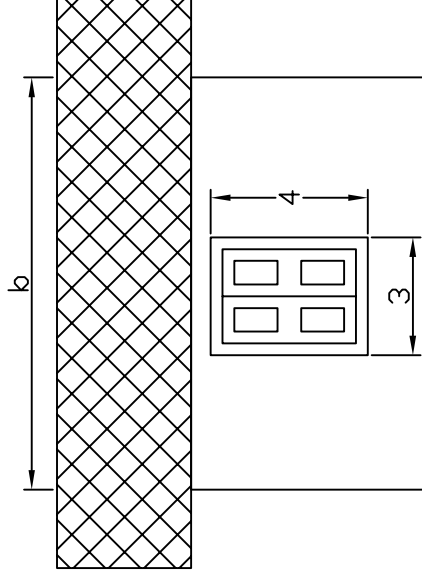


Fig.4.3.2.1 Structure of Deep Well in CDZ

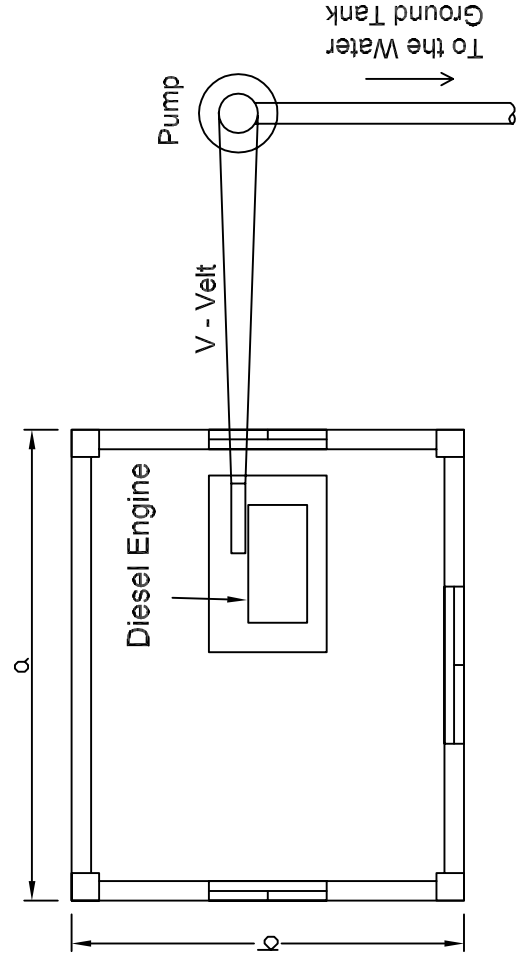


Helical Rotor Pump



FRONT VIEW

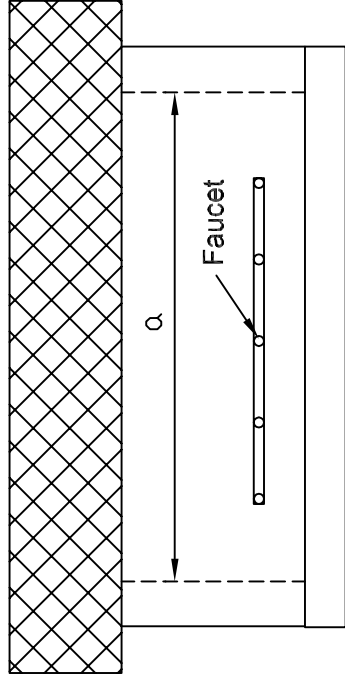
SIDE VIEW



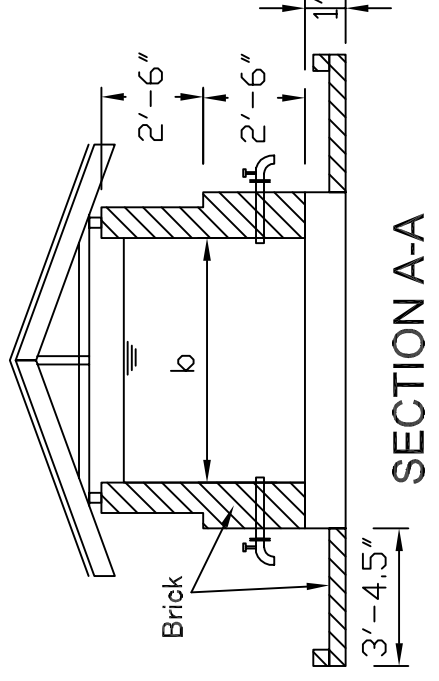
PLAN

unit:feet

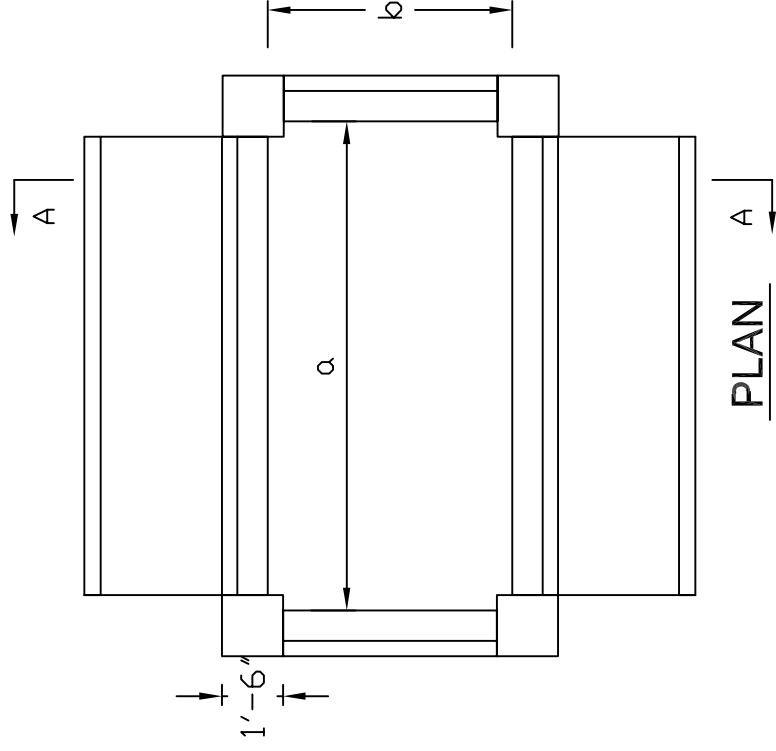
Fig.4.3.2.2 Pump House



SIDE VIEW

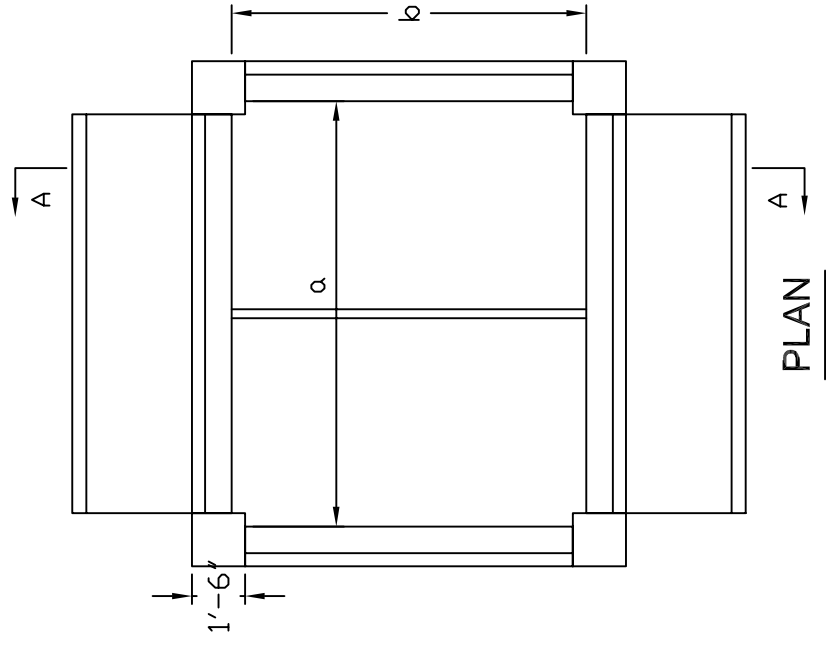
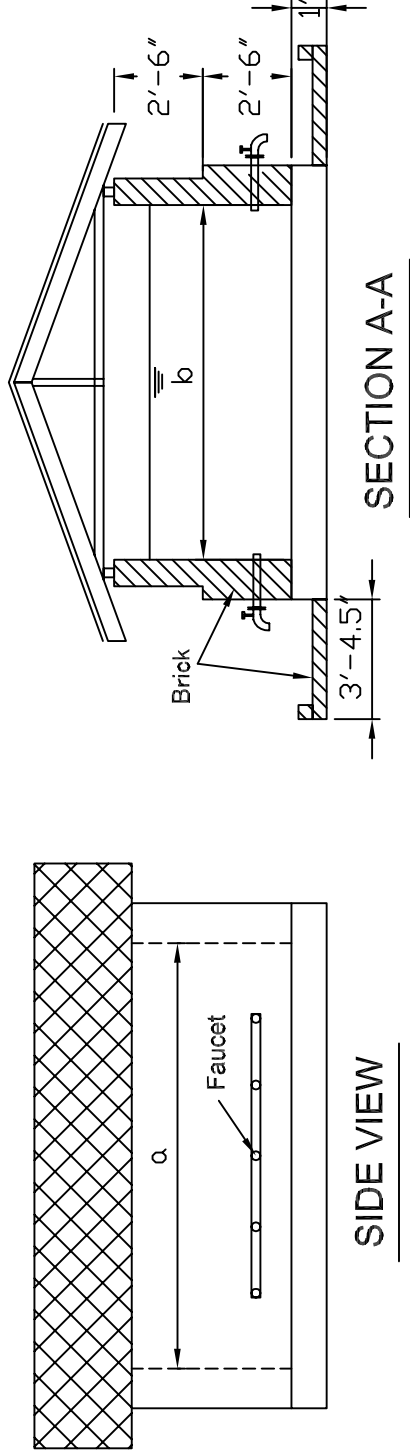


SECTION A-A



unit : feet

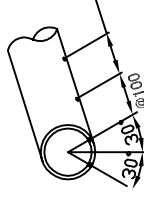
Fig.4.3.2.3 GROUND TANK
(1000, 2000 GALLONS)



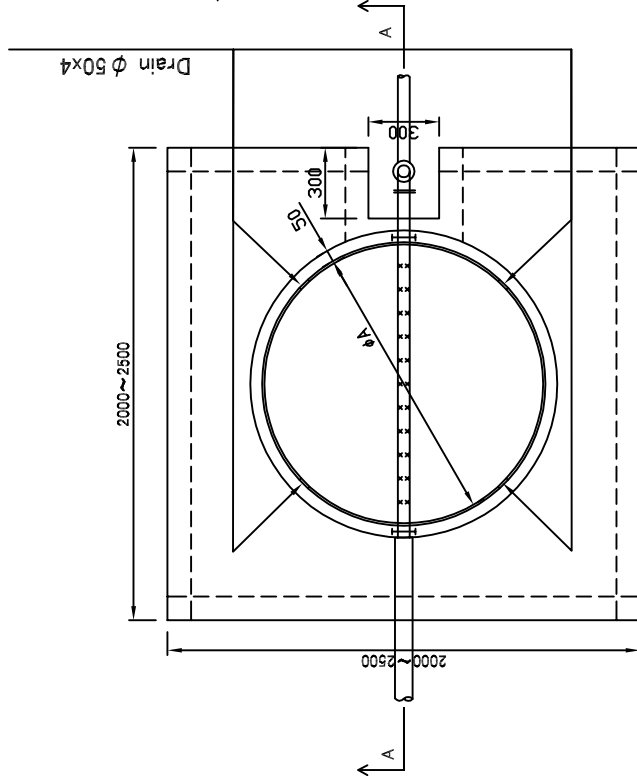
unit : feet

Fig.4.3.2.4 GROUND TANK
(3000, 5000GALLONS)

Adopted Pumping Rate (gallons/hour)	A
1000~1500	1200
~2000	1400
~3000	1700

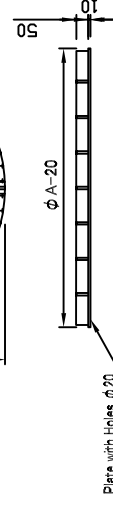
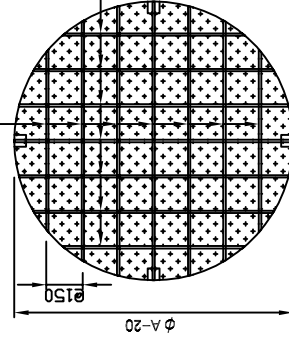


SPRINKLING PIPE & HOLE

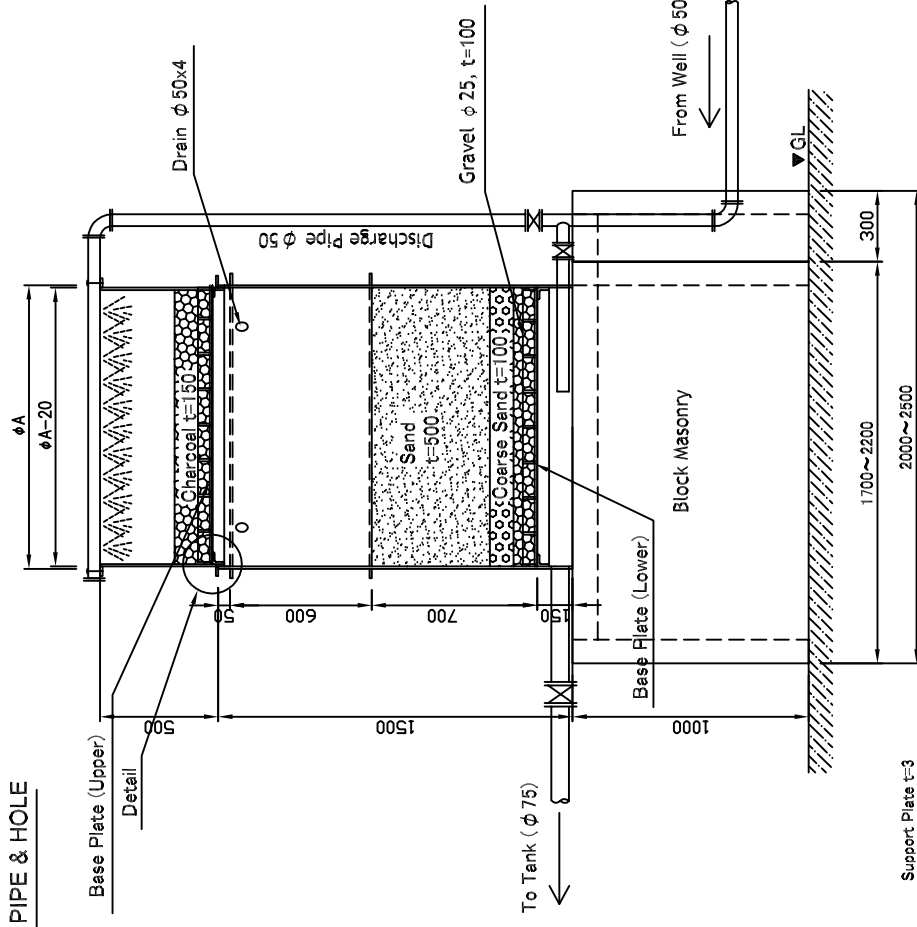


PLAN

Support Plate $t=3$



BASE PLATE (LOWER)

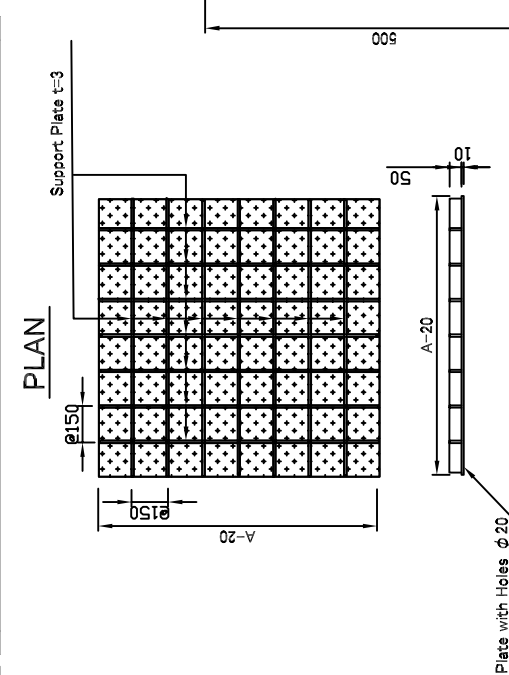
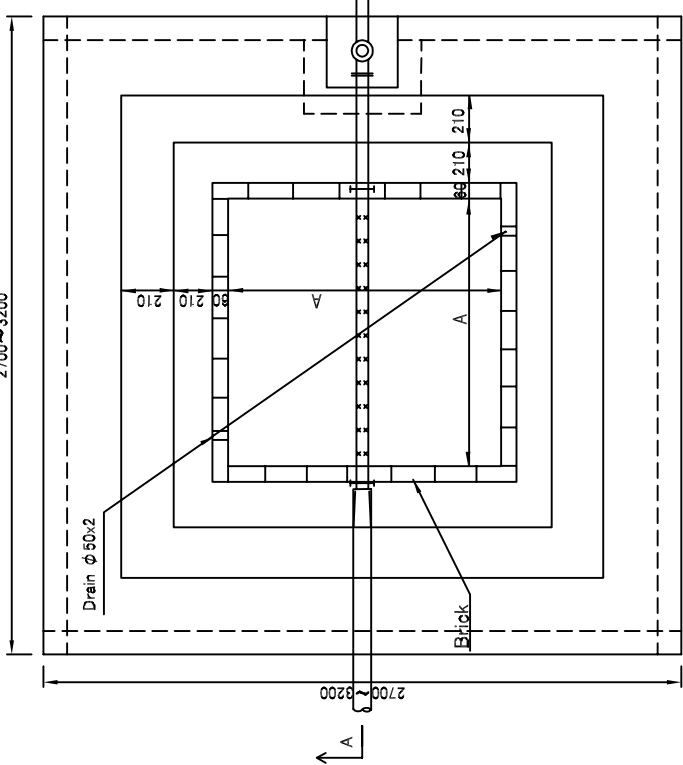


SECTION A-A

UNIT : mm

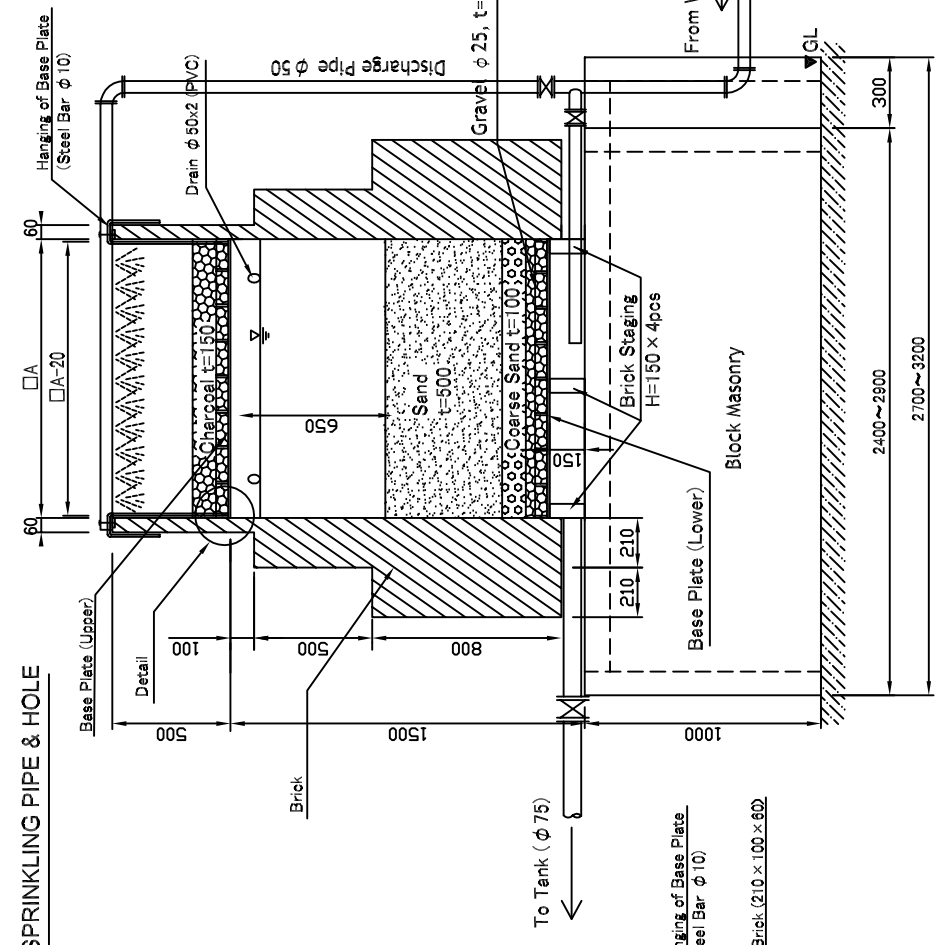
BASE PLATE (LOWER)

Fig 4.3.2.5 Iron Removing Device
(Steel Plate Type)



BASE PLATE (LOWER)

Adopted Pumping Rate (gallons/hour)	A
1000~1500	1200
~2000	1400
~3000	1700



SECTION A-A

UNIT : mm

Fig.4.3.2.6 Iron Removing Device (Brick Type)

