

JAPAN INTERNATIONAL COOPERATION AGENCY (JICA)  
THE STATE SECRETARIAT OF ENVIRONMENT AND URBAN DEVELOPMENT (SEMADUR)  
THE STATE COMPANY OF WATER AND SEWAGE (CEDAE)

THE STUDY ON MANAGEMENT AND IMPROVEMENT OF THE  
ENVIRONMENTAL CONDITIONS OF GUANABARA BAY  
IN RIO DE JANEIRO, THE FEDERATIVE REPUBLIC OF BRAZIL

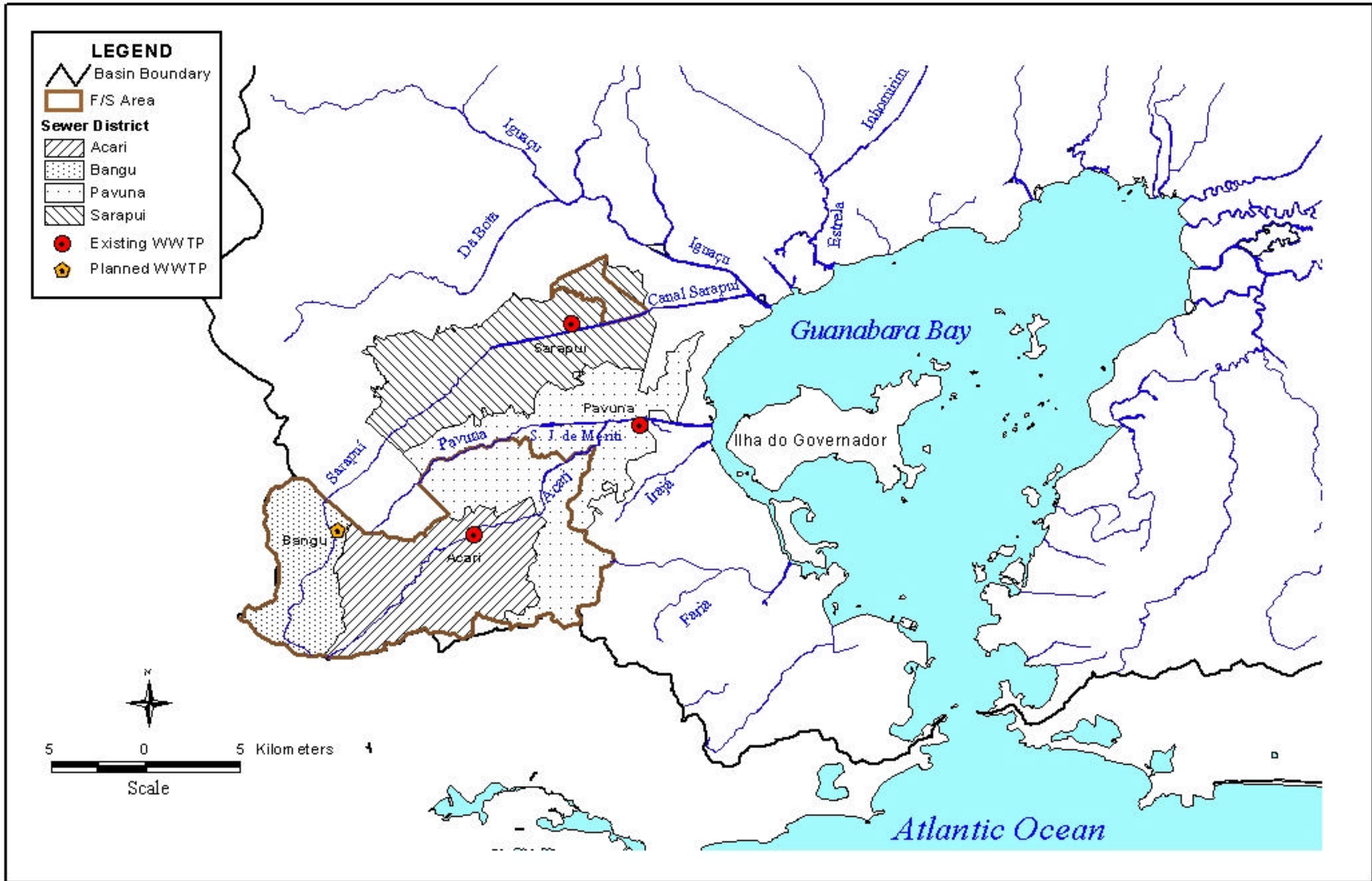
# **FINAL REPORT**

## **SUPPORTING REPORT VOL**

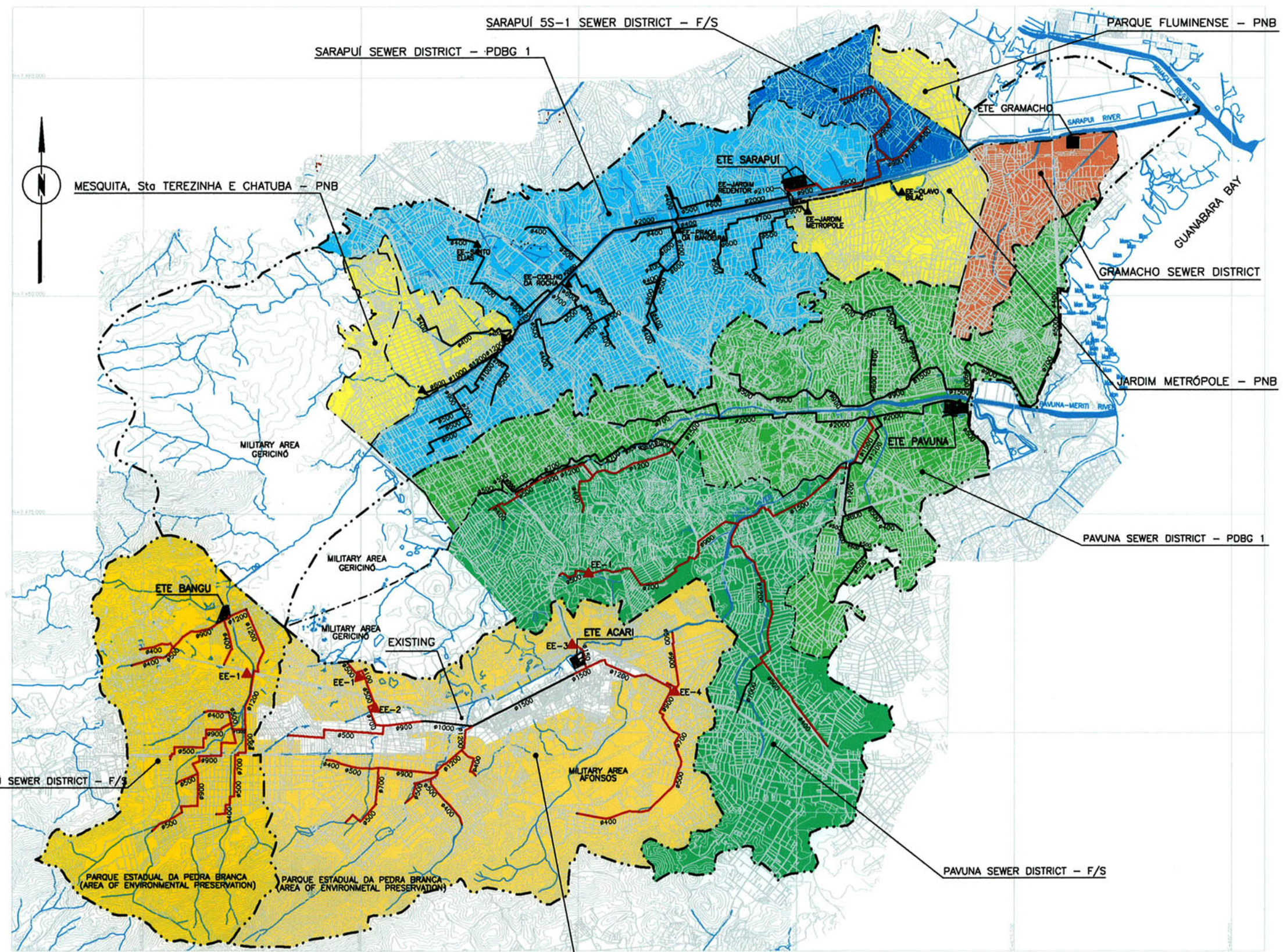
October 2003

**PACIFIC CONSULTANTS INTERNATIONAL**  
in association with  
**NIHON SUIDO CONSULTANTS**

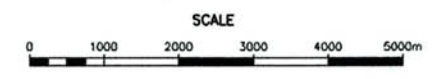




Drawing - 1.1 Location Map



- LEGEND**
- MUNICIPALITY BOUNDARY
  - BASIN BOUNDARY
  - SYSTEM BOUNDARY
  - RIVERS
  - TRUNK SEWER F/S (BY GRAVITY FLOW)
  - TRUNK SEWER EXISTING (BY GRAVITY FLOW)
  - TRUNK SEWER F/S (BY PRESSURE FLOW)
  - TRUNK SEWER EXISTING (BY PRESSURE FLOW)
  - ACARI SEWER DISTRICT F/S
  - BANGU SEWER DISTRICT F/S
  - GRAMACHO SEWER DISTRICT
  - PAVUNA SEWER DISTRICT F/S
  - PAVUNA SEWER DISTRICT PDBG-1
  - SARAPUÍ SEWER DISTRICT F/S
  - SARAPUÍ SEWER DISTRICT PDBG-1
  - SYSTEM PNB
  - EXISTING SEWERED AREA
  - ▲ EE PUMPING STATION EXISTENT
  - ▲ EE PUMPING STATION F/S
  - ETE TREATMENT STATION EXISTENT



DRAW. 1.2	THE STUDY ON MANAGEMENT AND IMPROVEMENT OF THE ENVIRONMENTAL CONDITIONS OF GUANABARA BAY IN RIO DE JANEIRO	TITLE LAYOUT OF THE PROJECT
JAPAN INTERNATIONAL COOPERATION AGENCY (JICA)		