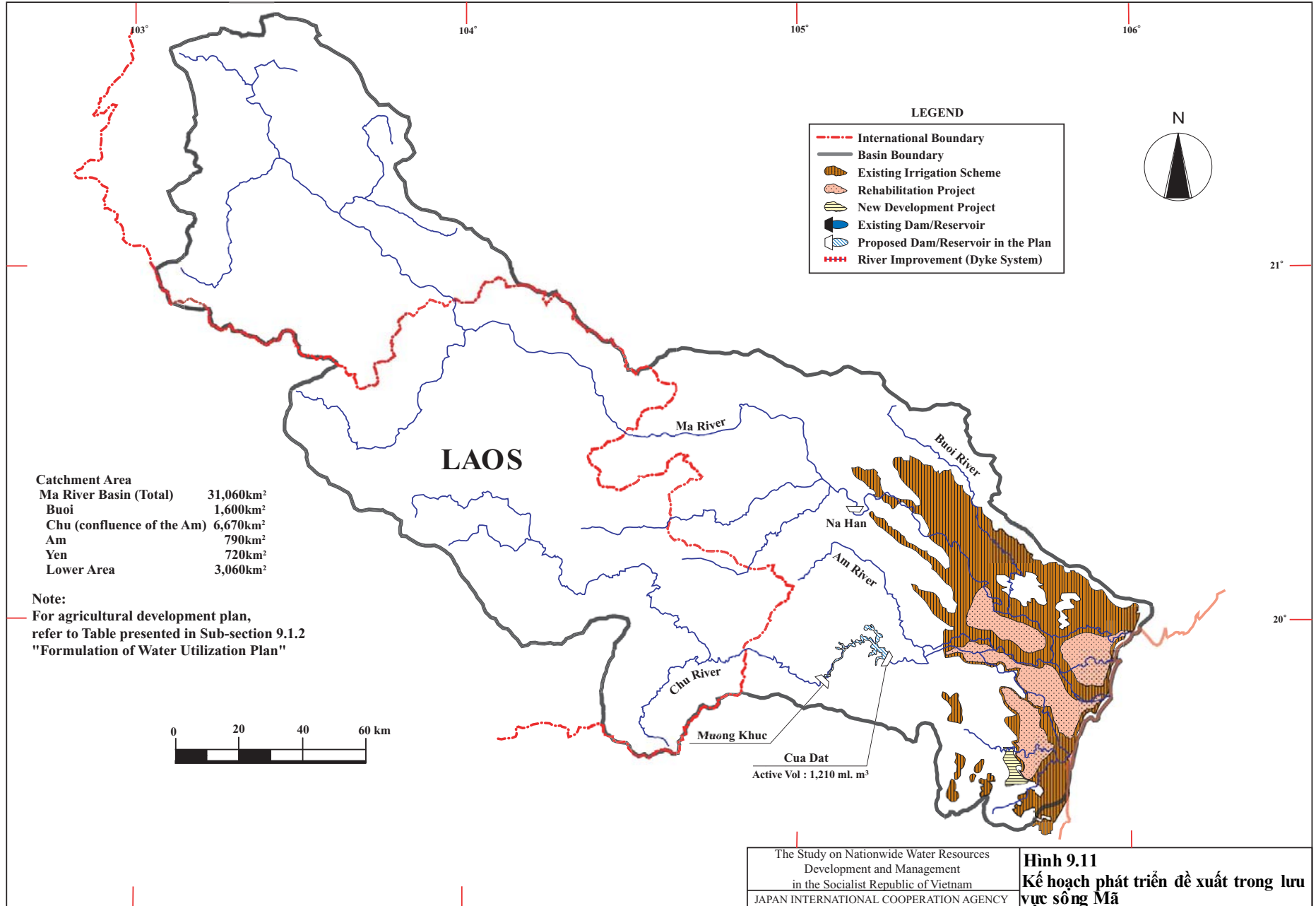
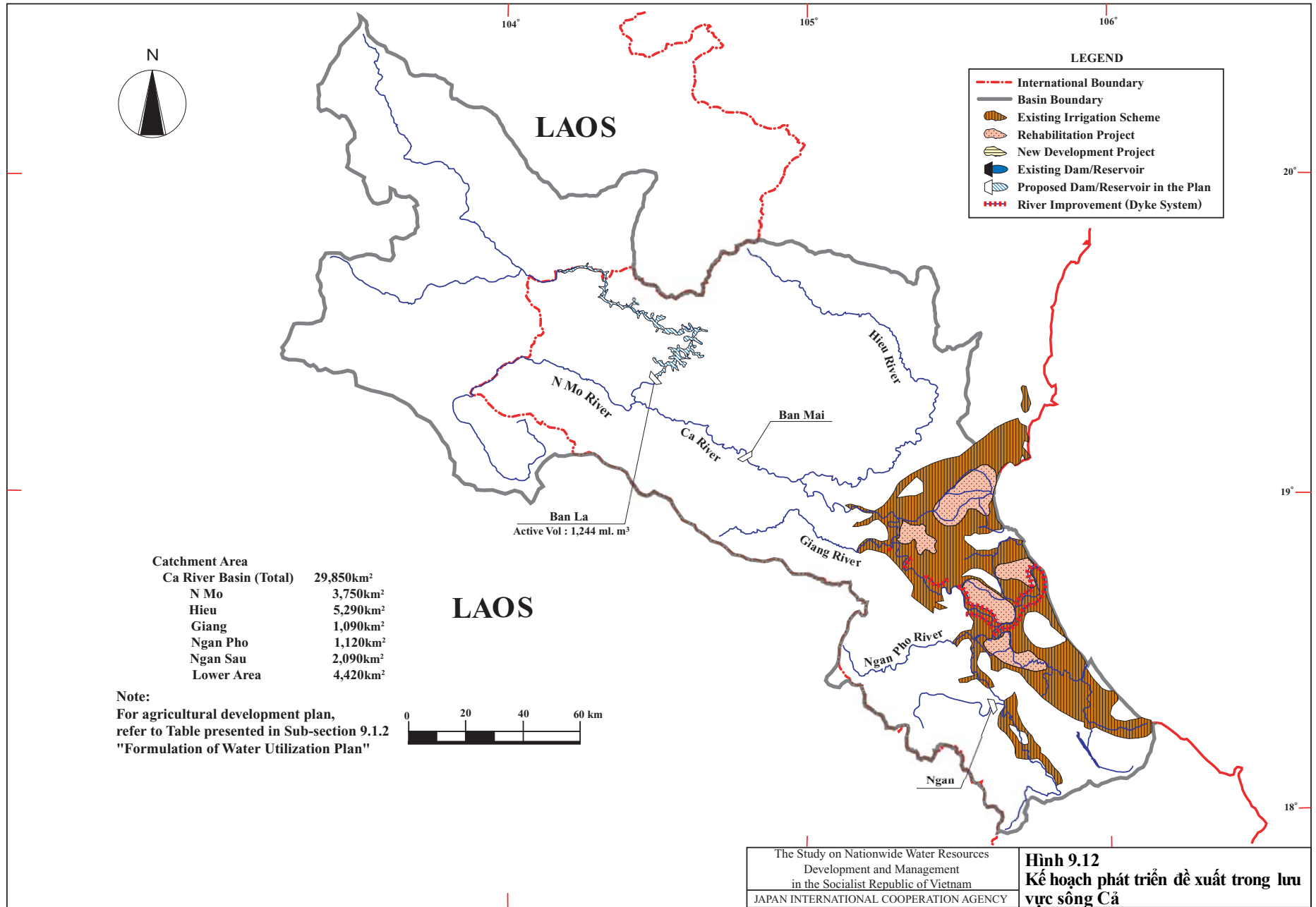


The Study on Nationwide Water Resources Development and Management in the Socialist Republic of Vietnam JAPAN INTERNATIONAL COOPERATION AGENCY	<b>Hình 9.10</b> <b>Kế hoạch phát triển đề xuất trong lưu</b> <b>vực sông Hồng và Thái Bình</b>
---	---



The Study on Nationwide Water Resources  
Development and Management  
in the Socialist Republic of Vietnam  
JAPAN INTERNATIONAL COOPERATION AGENCY

**Hình 9.11**  
**Kế hoạch phát triển đề xuất trong lưu vực sông Mã**



**LEGEND**

- - - International Boundary
- Basin Boundary
- Existing Irrigation Scheme
- Rehabilitation Project
- New Development Project
- Existing Dam/Reservoir
- Proposed Dam/Reservoir in the Plan
- - - - - River Improvement (Dyke System)

<b>Catchment Area</b>	
<b>Ca River Basin (Total)</b>	<b>29,850km<sup>2</sup></b>
N Mo	3,750km <sup>2</sup>
Hieu	5,290km <sup>2</sup>
Giang	1,090km <sup>2</sup>
Ngan Pho	1,120km <sup>2</sup>
Ngan Sau	2,090km <sup>2</sup>
Lower Area	4,420km <sup>2</sup>

**Note:**  
 For agricultural development plan,  
 refer to Table presented in Sub-section 9.1.2  
 "Formulation of Water Utilization Plan"



Ban La  
 Active Vol : 1,244 ml. m<sup>3</sup>

The Study on Nationwide Water Resources  
 Development and Management  
 in the Socialist Republic of Vietnam  
 JAPAN INTERNATIONAL COOPERATION AGENCY

**Hình 9.12**  
**Kế hoạch phát triển đề xuất trong lưu**  
**vực sông Cả**

