

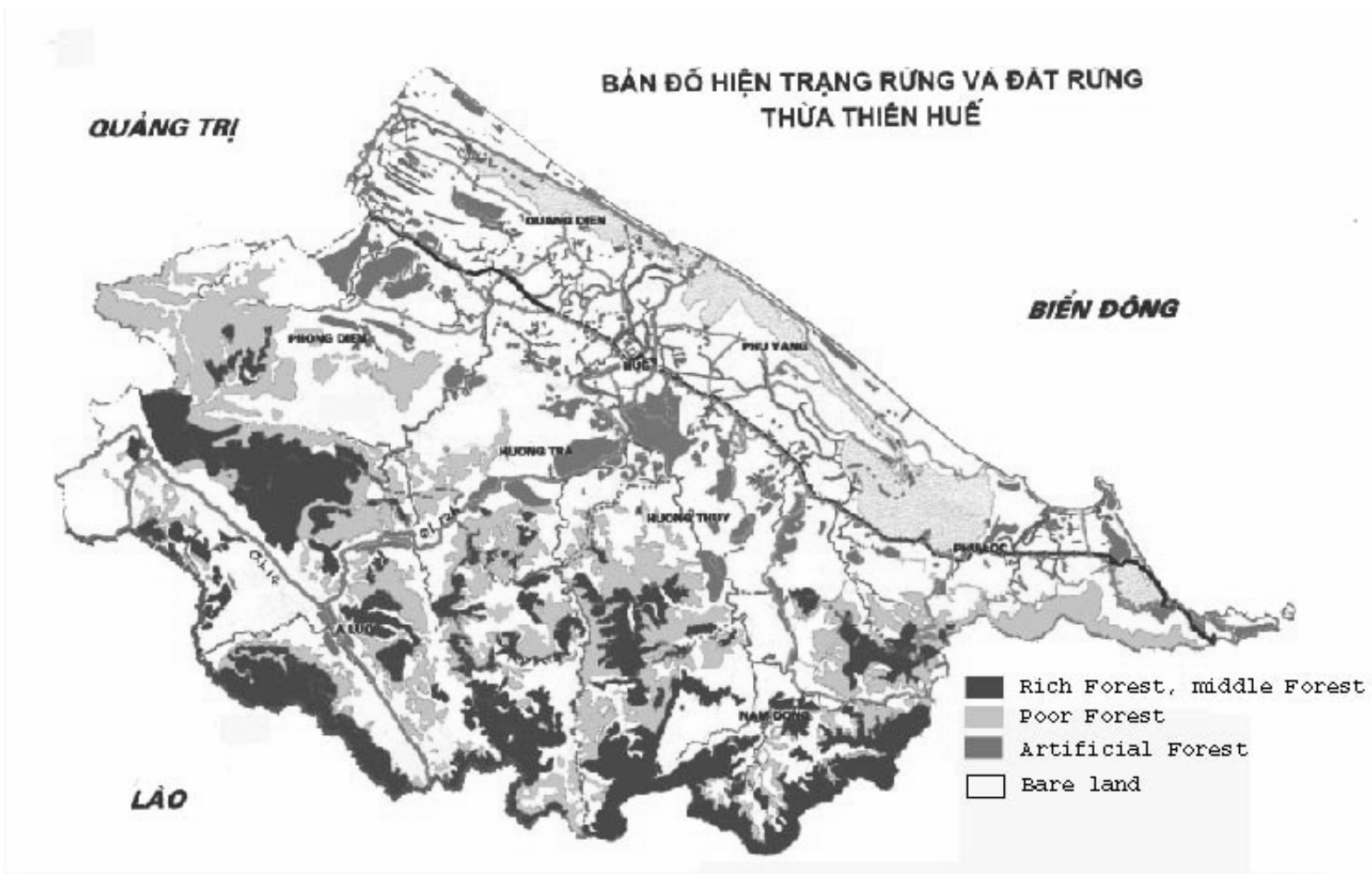


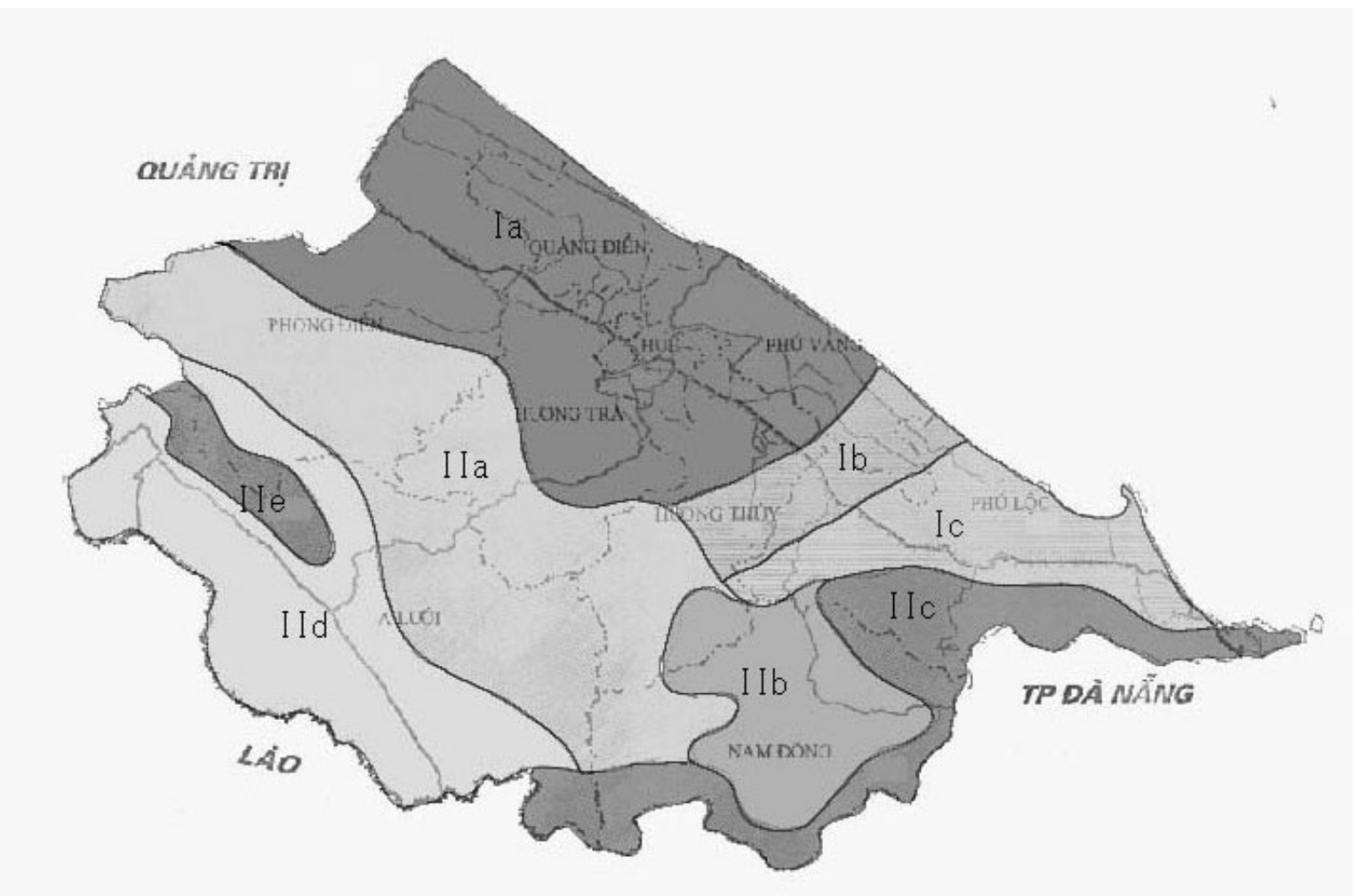
The Study on Nationwide Water Resources  
Development and Management  
in the Socialist Republic of Vietnam

JAPAN INTERNATIONAL COOPERATION AGENCY

**Figure C.6**

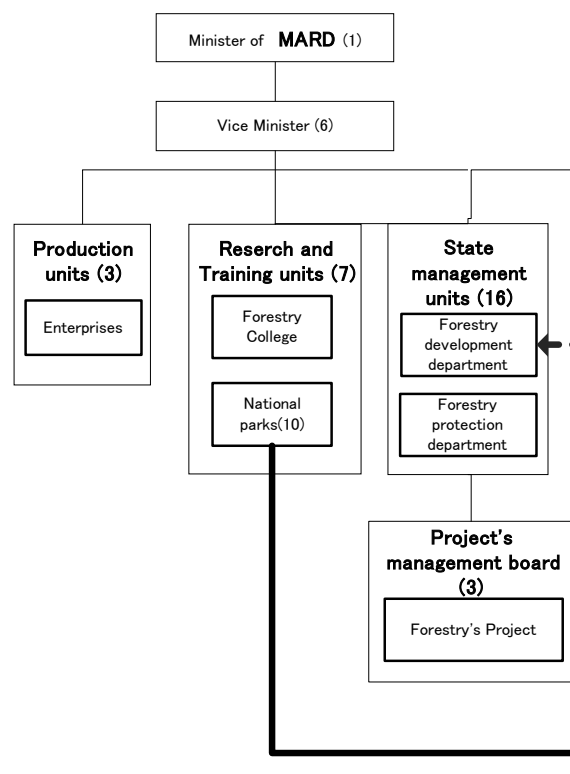
**Current condition of Ta Trach river basin  
and Bo river basin**



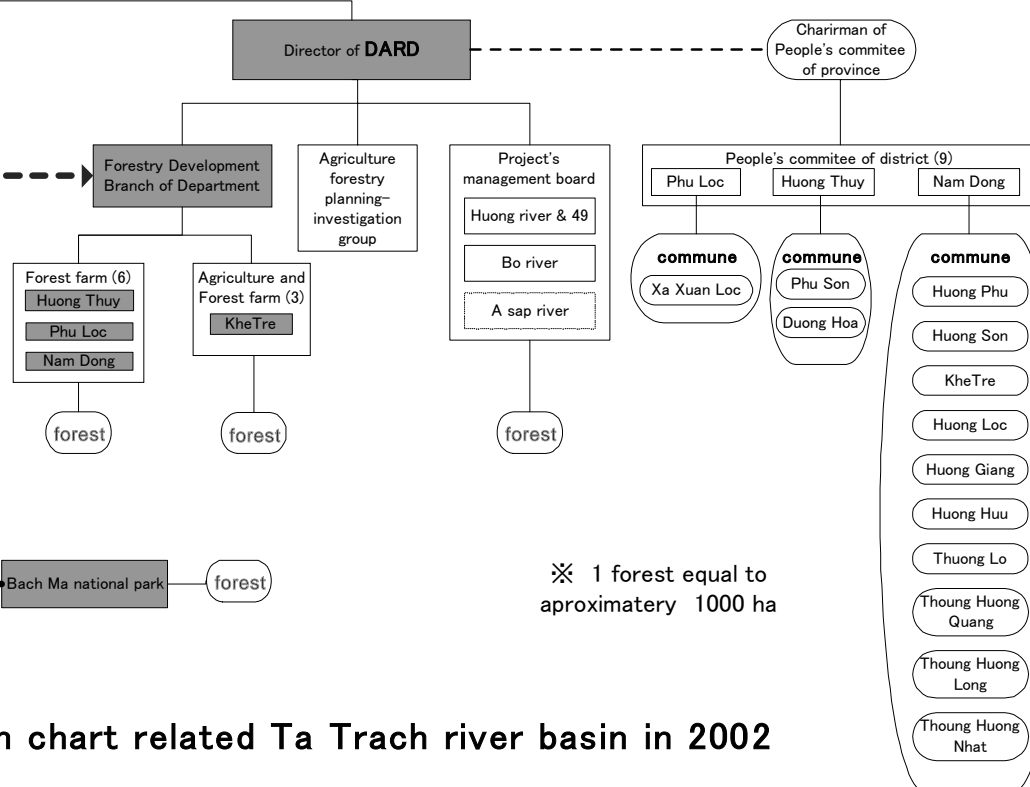


**Figure C.9**  
**Forestry organization chart**

## Ministry of Agriculture and Rural Development

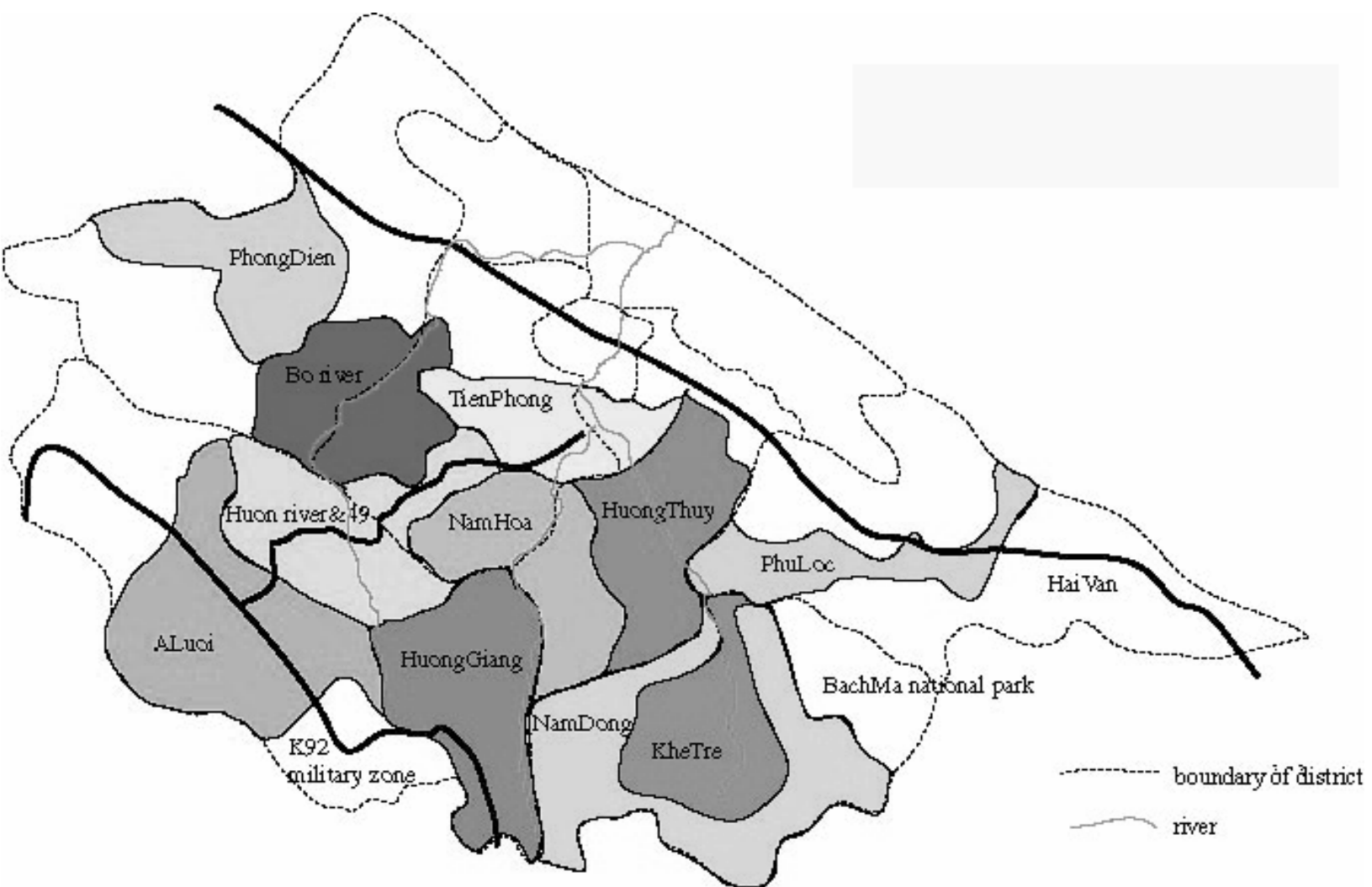


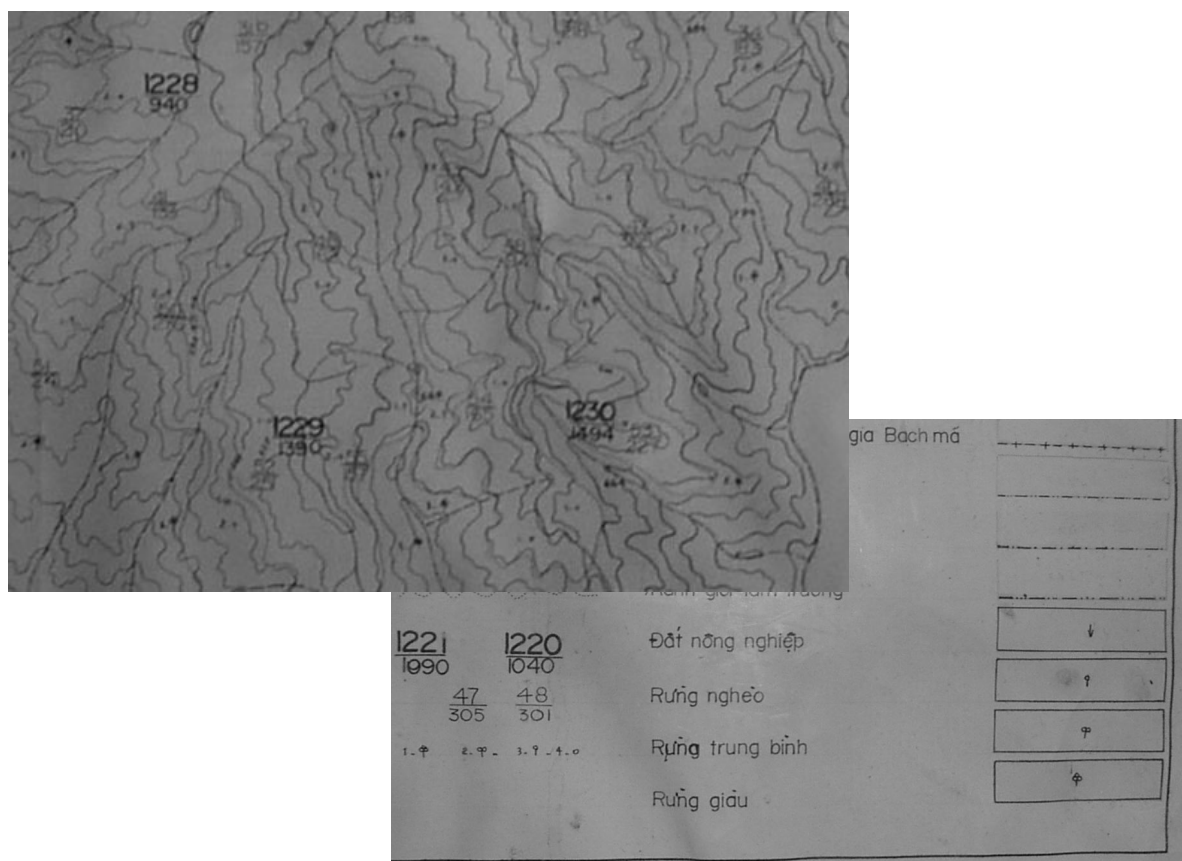
## Thua Thien Hue province



※ 1 forest equal to  
aproximately 1000 ha

**Forestry organization chart related Ta Trach river basin in 2002**



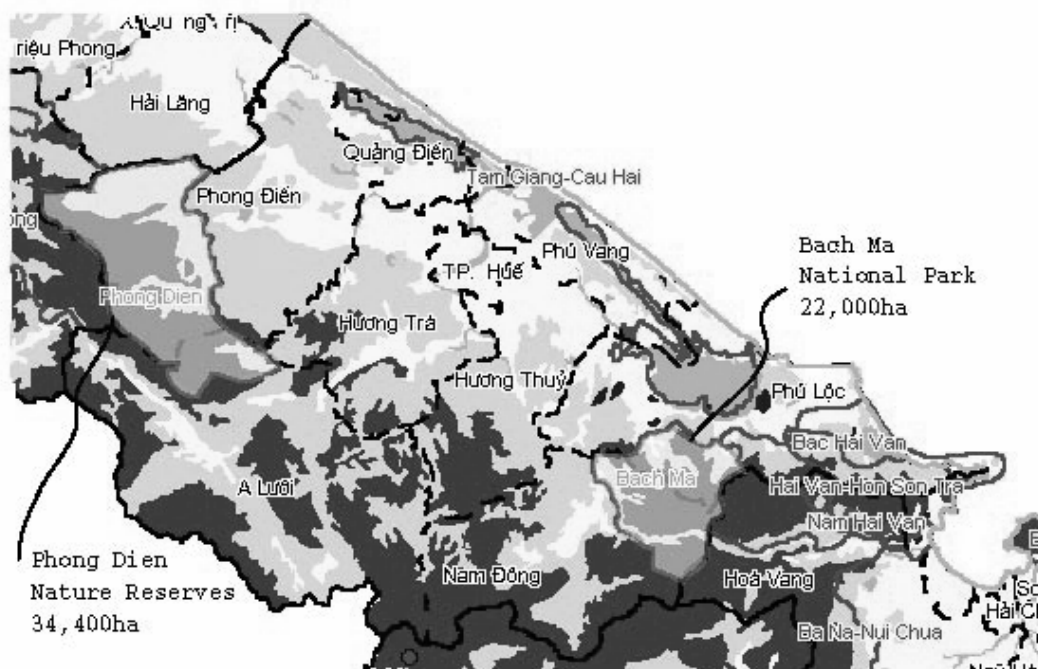


Nam Dong forest farm													unit : ha
forest unit		classify of tree	Natural land area	planning forestry	forest			clear land					
old	new				total	natural forest	plantation	capable forest	total	Ia	Ib	Ic	other land
		total	14,110.0	0.0	10,068.1	10,037.1	31.0	0.0	3,860.2	0.0	0.0	3,860.2	181.7
		SX	3,433.0	0.0	3,118.9	3,118.9	0.0	0.0	274.2	0.0	0.0	274.2	39.9
		PH	10,677.0	0.0	6,949.2	6,918.2	31.0	0.0	3,586.0	0.0	0.0	3,586.0	141.8
		DD	0.0	0.0	0.0	0.0	0.0	0.0	0.0	0.0	0.0	0.0	0.0
			14,110.0	0.0	10,068.1	10,037.1	31.0	0.0	3,860.2	0.0	0.0	3,860.2	181.7
1181	363	PH	1,153.0		581.9	581.9			548.2			548.2	22.9
1182	364	PH	1,124.0		870.0	839.0	31.0		232.9			232.9	21.1
1183B	377	PH	402.0		397.6	397.6			0.0				4.4
1184	383	PH	886.0		406.6	406.6			466.7			466.7	12.7
1185	381	PH	1,770.0		1,031.8	1,031.8			717.5			717.5	20.7
1186	378	SX	1,412.0		1,120.8	1,120.8			274.2			274.2	17.0
1187	379	PH	1,596.0		1,490.9	1,490.9			87.0			87.0	18.1
1210	385	SX	1,130.0		1,117.7	1,117.7			0.0				12.3
1211	384	SX	891.0		880.4	880.4			0.0				10.6
1212	387	PH	1,378.0		1,013.3	1,013.3			349.9			349.9	14.8
1153	389	PH	1,106.0		518.1	518.1			575.6			575.6	12.3
1213	390	PH	1,262.0		639.0	639.0			608.2			608.2	14.8
			14,110.0	0.0	10,068.1	10,037.1	31.0	0.0	3,860.2	0.0	0.0	3,860.2	181.7
note : SX production forest					I a grass, banana forest								
PH protection forest					I b bamboo, scattered wood trees								
DD special use forest					I c reborn forest (height >1m, density >1000trees/ha)								
NTK out of forest unit													

The Study on Nationwide Water Resources  
Development and Management  
in the Socialist Republic of Vietnam  
JAPAN INTERNATIONAL COOPERATION AGENCY

**Figure C.11**  
**Forest management map and list**

**Existing and proposed protected areas in Thua Thien Hue province**  
**Các khu bảo vệ hiện có và đề xuất ở tỉnh Thừa Thiên Huế**



**Vegetation type / Kiểu rừng**

- Evergreen forest / Rừng thường xanh
- Coniferous forest / Rừng lá kim
- Deciduous forest / Rừng rụng lá (khô)
- Semi-deciduous forest / Rừng nửa rụng lá
- Limestone forest / Rừng núi đá
- Bamboo / Rừng tre nứa
- Plantation forest / Rừng trồng
- Grassland and scrub / Đất trống
- Agricultural land / Đất nông nghiệp
- Water bodies / Mặt nước
- Mangrove / Rừng ngập mặn
- Melaleuca / Rừng tràm

**Legend / Chú giải**

- Protected area / Khu bảo vệ
- Provincial border / Ranh giới tỉnh
- District border / Ranh giới huyện

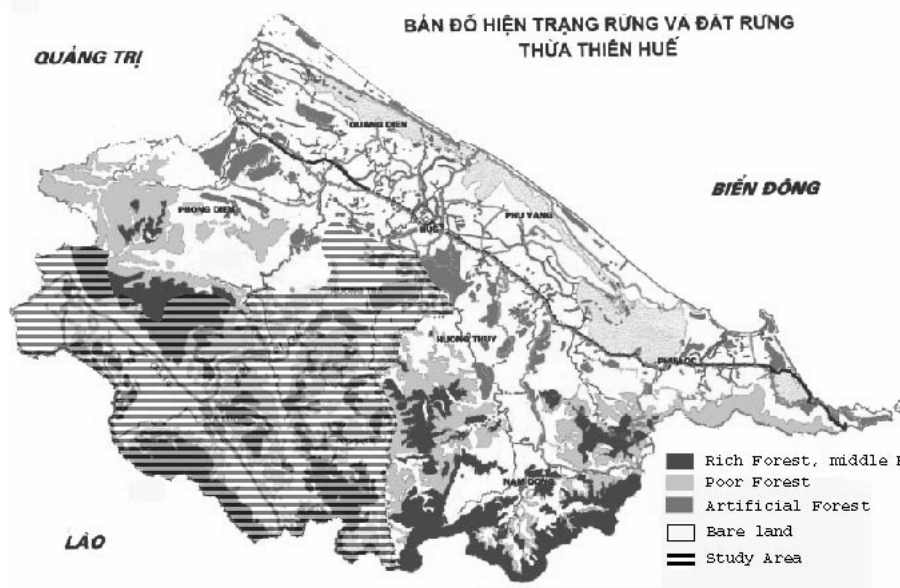


**QUẢNG TRỊ**

**BẢN ĐỒ HIỆN TRẠNG RỪNG VÀ ĐẤT RỪNG  
THỪA THIÊN HUẾ**

**BIỂN ĐÔNG**

**LÀO**



The Study on Nationwide Water Resources  
Development and Management  
in the Socialist Republic of Vietnam  
JAPAN INTERNATIONAL COOPERATION AGENCY

**Figure C.12**  
**Existing scheme related forestry**

