



E 472,000    E 473,000    E 474,000    E 475,000    E 476,000    E 477,000    E 478,000

N 9442,000    N 9443,000    N 9444,000    N 9445,000    N 9446,000

**JICA**  
JAPAN INTERNATIONAL COOPERATION AGENCY

THE STUDY ON COMPREHENSIVE WATER MANAGEMENT  
OF MUSI RIVER BASIN IN THE REPUBLIC OF INDONESIA

CTI Engineering International Co., Ltd and NIKKEN Consultants, Inc.

STARTED	AUGUST, 2002
ASD BY	SEPTEMBER, 2002
CHECKED	OCTOBER, 2002
APPROVED	OCTOBER, 2002
FILE	

**DIGITAL LINE MAP**  
PALEMBANG CITY

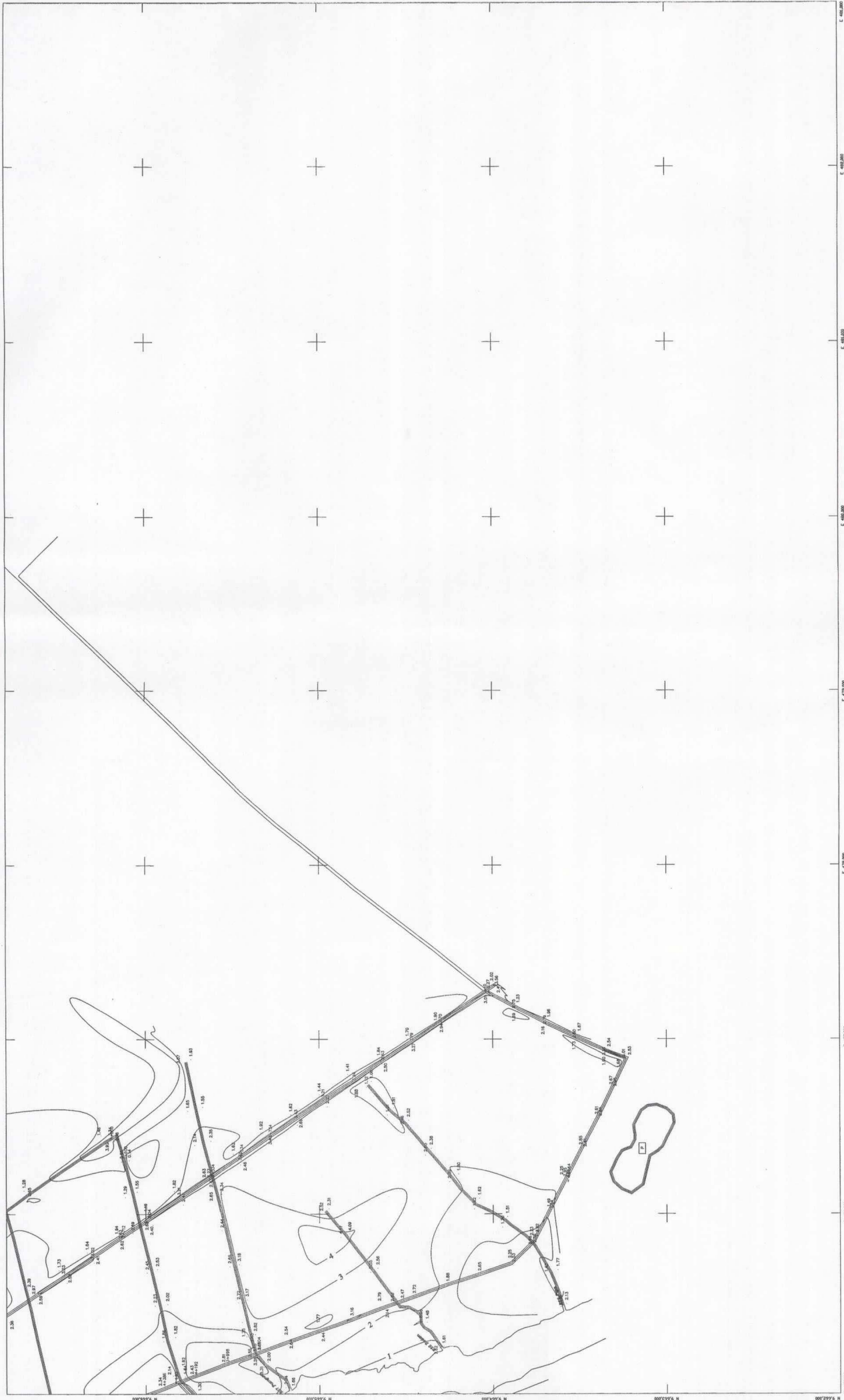
ADVISED SHEET  
① ② ③ ④ ⑤ ⑥ ⑦ ⑧ ⑨ ⑩ ⑪ ⑫ ⑬ ⑭ ⑮ ⑯ ⑰ ⑱ ⑲ ⑳ ㉑ ㉒ ㉓ ㉔ ㉕ ㉖ ㉗ ㉘ ㉙ ㉚ ㉛ ㉜ ㉝ ㉞ ㉟ ㊱ ㊲ ㊳ ㊴ ㊵ ㊶ ㊷ ㊸ ㊹ ㊺

SHEET NO. 046

SCALE 1 : 10,000

**LEGEND :**

	ROAD		CONTOUR INTERVAL 1 m
	LONG SECTION LINE		RIVER
	BRIDGE		POND
	CULVERT		HOUSE/BUILDING
	BRANCH MARK		
	SPOT HEIGHT		
	MARCH		
	2.27		



**JICA**  
 JAPAN INTERNATIONAL COOPERATION AGENCY

THE STUDY ON COMPREHENSIVE WATER MANAGEMENT OF MUSI RIVER BASIN IN THE REPUBLIC OF INDONESIA  
 CTT Engineering International Co., Ltd and NIKKEN Consultants, Inc.

SUBMITTED	AUGUST, 2002
ASAP BY	SEPTEMBER, 2002
CHECKED	OCTOBER, 2002
APPROVED	OCTOBER, 2002
FILE	

**DIGITAL LINE MAP**  
 PALEMBANG CITY

ALTERNATIVE  
 ① ② ③ ④ ⑤ ⑥ ⑦ ⑧ ⑨ ⑩ ⑪ ⑫ ⑬ ⑭ ⑮ ⑯ ⑰ ⑱ ⑲ ⑳ ㉑ ㉒ ㉓ ㉔ ㉕ ㉖ ㉗ ㉘ ㉙ ㉚ ㉛ ㉜ ㉝ ㉞ ㉟ ㊱ ㊲ ㊳ ㊴ ㊵ ㊶ ㊷ ㊸ ㊹ ㊺ ㊻ ㊼ ㊽ ㊾ ㊿

SCALE 1 : 10,000

0 100 200 300 400 500 600 700 800 900 1000

N  
 S  
 E  
 W

**LEGEND :**

- ROAD
- LONG SECTION LINE
- BRIDGE
- CLAYPIT
- BENCH MARK
- SPOT HEIGHT
- CONTOUR INTERVAL 1 m
- RIVER
- POND
- HOUSE/BUILDING

E 470.000 E 471.000 E 472.000 E 473.000 E 474.000 E 475.000 E 476.000 E 477.000 E 478.000 E 479.000 E 480.000

N 944.000 N 945.000 N 946.000