

6.4 Land Use and Land Use Plan in Palembang

The current land use of Palembang was shown on **Figure C6.4.1**.

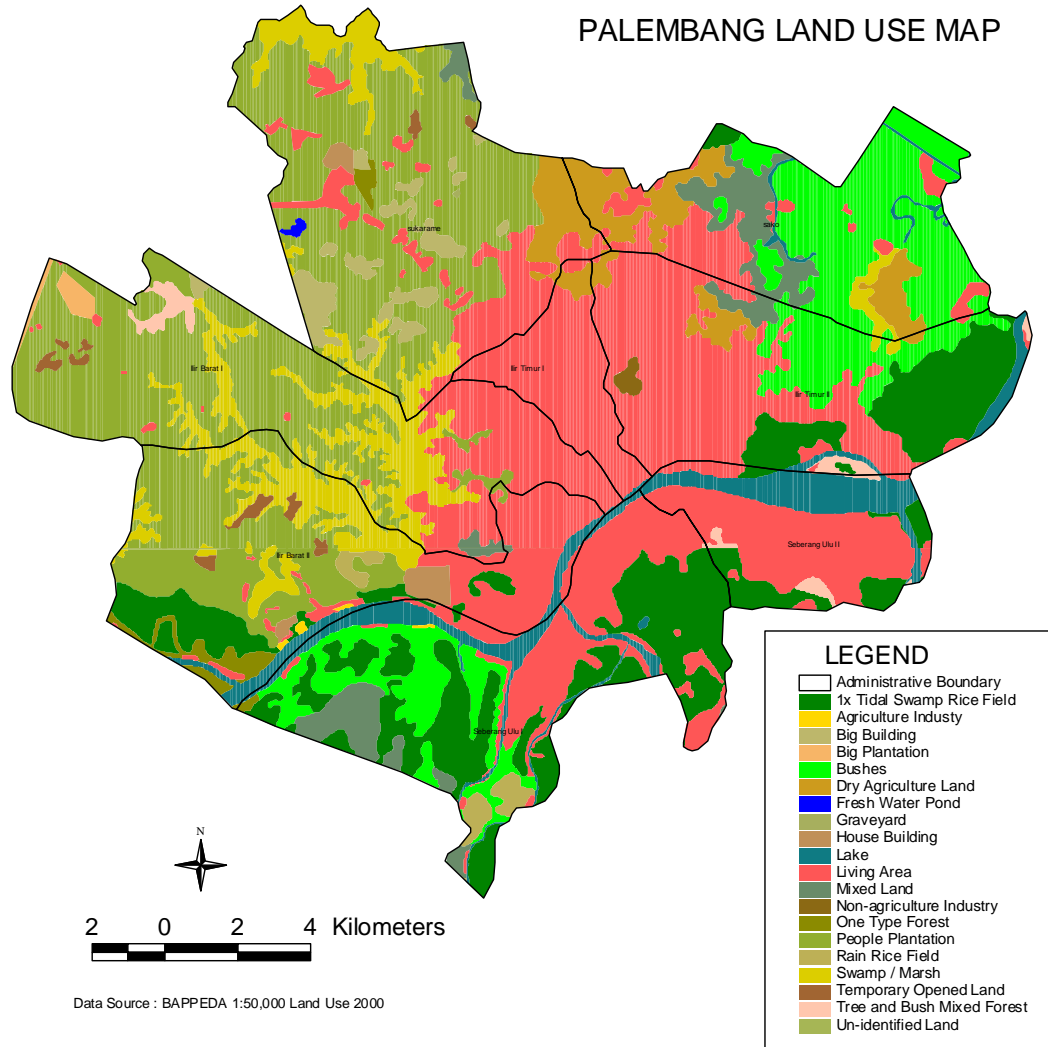


Figure C6.4.1 Palembang Land Use Map

In 1994, Palembang Municipality made the first spatial plan that the target years are from 1994 to 2004. 5 years later in 1998, this spatial plan was reviewed and evaluated by PT Cakra Graha through a contract project with Regional Development Bureau of Palembang Municipality (Contract No. 602/1664/BPP/1998). After the evaluation and analysis, a new spatial plan 1999 to 2009 was designed, however, the data used in the new spatial plan was the same as the one in the old plan 1994 to 2004. Considering the current economic status of Indonesia and the annual budget of Palembang municipality, the spatial plan 1999 to 2009 for Palembang municipality can be also considered to revise again to 2020 without much update.

PALEMBANG Land Use Plan 2020

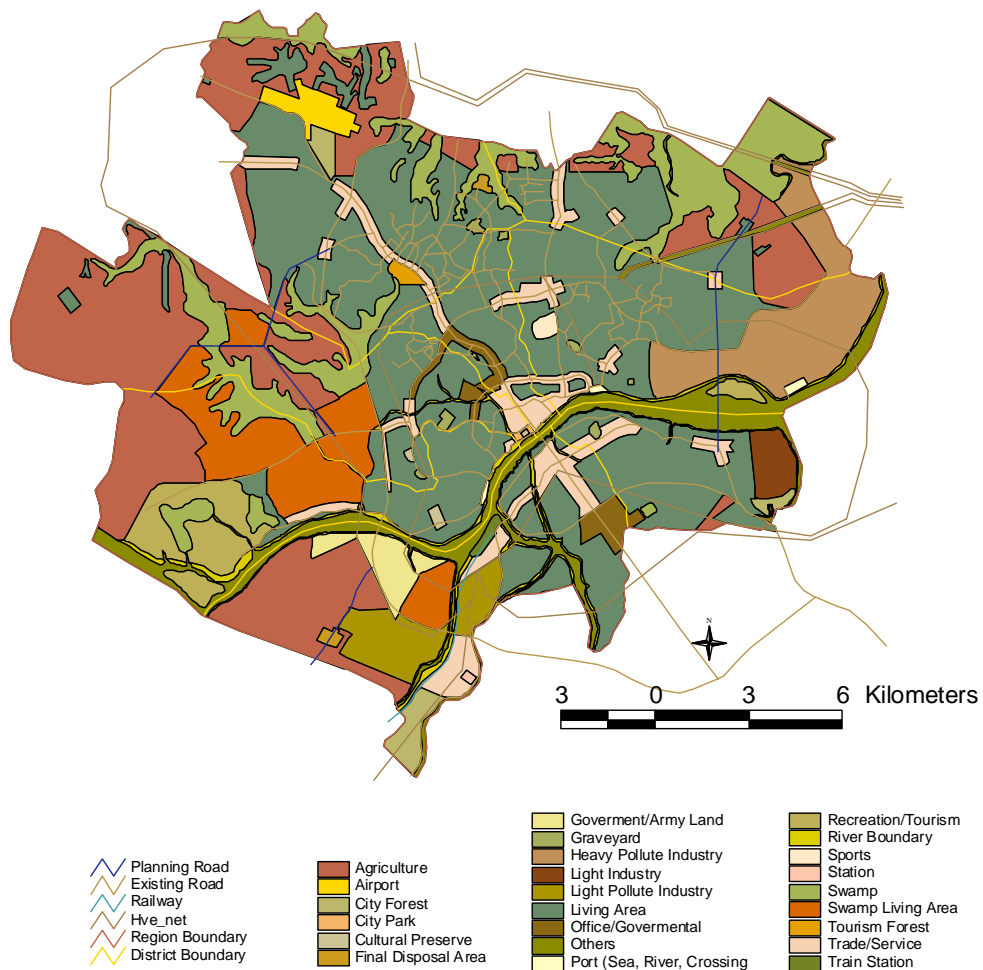


Figure C6.4.2 Palembang Land Use Plan Map