

6.2 Land Use and Land Use Plan by Land Form

According with the natural geography in south Sumatra, the land can be classified into 3 categories. Low land or Wetland includes flood plain, peat swamp and inland riverine plain land forms. Middle land includes undulating and rolling plain and inter mountain plain land forms. High land includes hilly land, steep hills and mountain land forms.

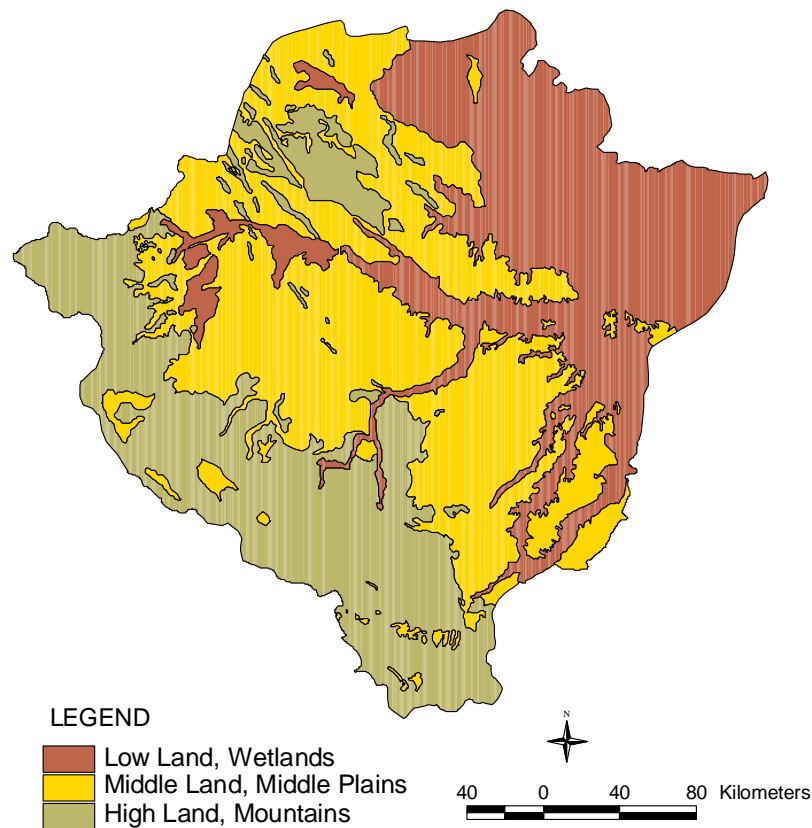


Figure C6.2.1 Land Forms of South Sumatra Province

6.2.1 Land Use and Land Use Plan in Low Land (Wetland)

The following figure shows the current land use in Low Land, and the area summary is shown on **Table C6.2.1**. The land in this area was mainly covered by wetland, rice paddy, people's plantation and swamp.

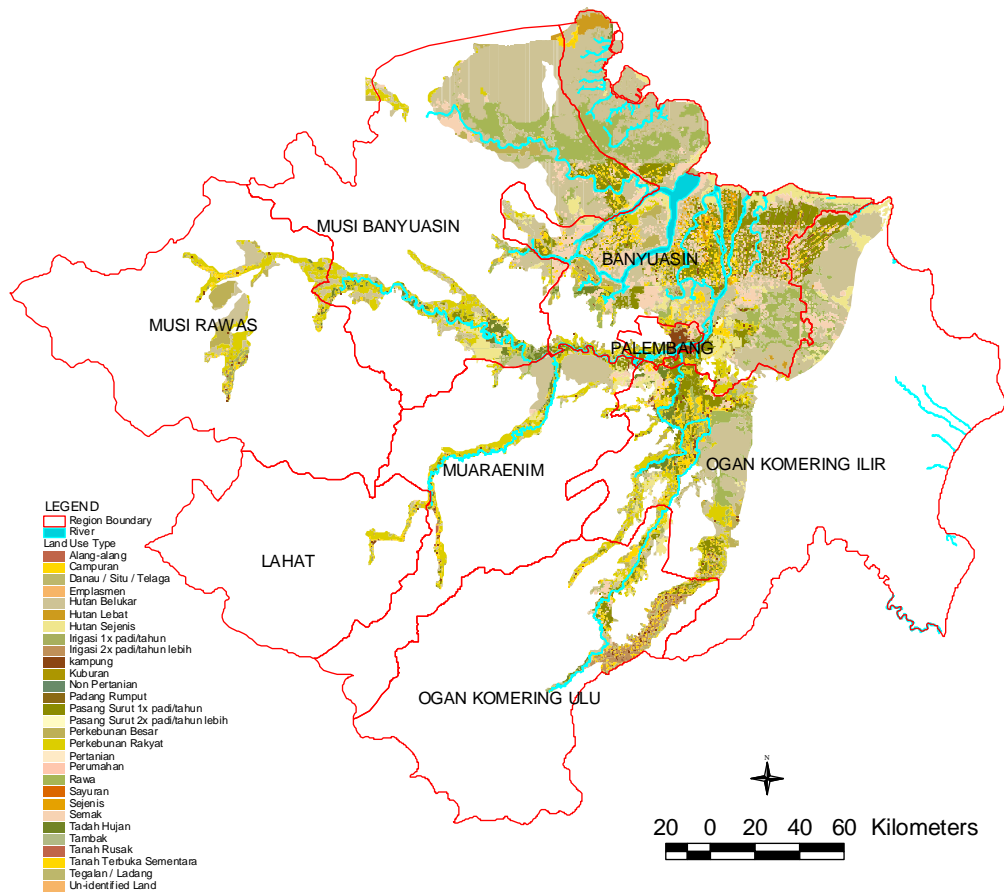


Figure C6.2.2 Land Use in Wetland

Table C6.2.1 Area Summary of Land Use in Wetland

Land Use in BAHASA Indonesia	Land Use in English	Area (m ²)
Kampung	Living area	392,718,976
Perumahan	Housing	2,588,929
Emplasmen	Emplasmen	4,943,886
Kuburan	Gravia	38,668
Pertanian	Agricultural	342,931
Non Pertanian	Not Agricultural	2,963,591
Irigasi 2 x padi / tahun lebih	Irigation 2 x paddy / years plus	185,972,352
Irigasi 1 x padi / tahun	Irigation 1 x paddy / years	109,855,656
Tadah Hujan	Rain Field	409,486,528
Pasang Surut 2 x padi / tahun lebih	Tidal Swamp 2 x paddy / years plus	9,823,375
Pasang Surut 1 x padi / tahun	Tidal Swamp 1 x paddy / years	2,713,442,048
Tegalan / Ladang	Field / Yard	293,622,560
Sayuran	Vegetables	199,531
Campuran	Mix	1,458,317,440
Sejenis	One Typical	151,921,280
Perkebunan Besar	Big Plantation	699,224,896
Perkebunan Rakyat	Farmer's Plantation	2,527,304,960
Padang Rumput	Savana	18,826,916
Alang-alang	Sedge	1,336,300
Semak	Bushes	2,068,685,056
Hutan Lebat	Bowry Forest	119,128,344
Hutan Belukar	Wilderness	8,647,392,256
Hutan Sejenis	One Type Forest	1,466,243,584
Tambak	Fishpond	626,506
Danau / Situ / Telaga	Lake	979,190,464
Rawa	Swamp / Marsh	2,409,235,200
Tanah Rusak	Broken Land	3,823,128
Tanah terbuka Sementara	Temporary Open Land	72,304,200

The following figure shows the land use plan in Low Land, and the area summary of the land use plan is shown on **Table C6.2.2**. The land use in this area was planned to wetland (preserve forest), production forest, and agriculture land.

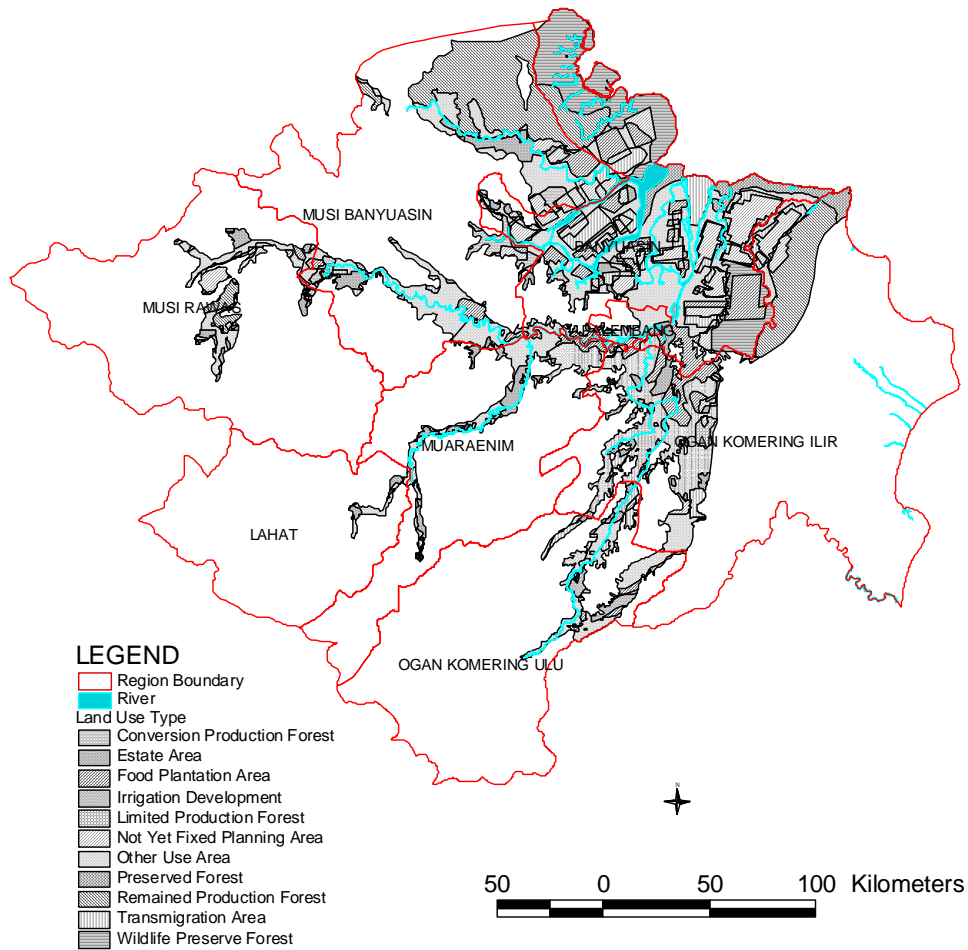


Figure C6.2.3 Land Use Plan in Wetland

Table C6.2.2 Area Summary of Land Use Plan in Wetland

Land Use Plan in BAHASA Indonesia	Land Use Plan in ENGLISH	AREA(m²)
Areal Penggunaan Lain	Other Use Area	9,281,267,194
Hutan Lindung	Preserved Forest	556,223,795
Hutan Produksi Terbatas	Limited Production Forest	87,618,114
Hutan Produksi Tetap	Remained Production Forest	3,714,719,163
Hutan Produksi yang Dapat Dikonversikan	Conversion Production Forest	447,172,127
Hutan Suaka Alam	Wildlife Preserve Forest	2,172,191,685
Kawasan Perkebunan	Estate Area	1,614,680,228
Kawasan Tanaman Pangan	Food Plantation Area	2,432,918,519
Kawasan Transmigrasi	Transmigration Area	1,447,690,243
Masih Tumpangusun diantara 10 rencana di atas	Not Yet Fixed Planning Area	2,804,411,151
Pengembangan Irigasi	Irrigation Development	188,609,528

6.2.2 Land Use and Land Use Plan in Middle Land

The Figure C6.2.4 shows the current land use map in Middle Land, and the area summary is shown in **Table C6.2.3**. This area was mainly covered by agricultural land and natural forests.

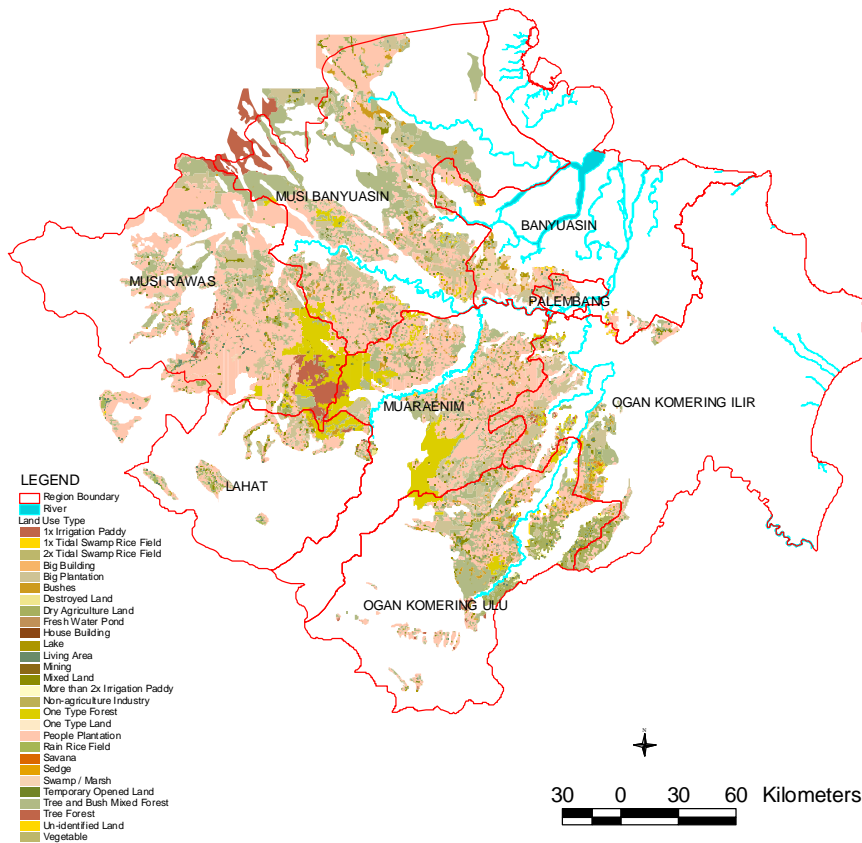


Figure C6.2.4 Land Use in Middle Land

Table C6.2.3 Area Summary of Land Use in Middle Land

Land Use in BAHASA Indonesia	Land Use in English	AREA (m ²)
Kampung	Living area	277,626,496
Perumahan	Housing	2,320,612
Emplasmen	Emplasmen	17,816,722
Non Pertanian	Not Agricultural	111,469
Pertambangan	Mining	2,048,116
Irigasi 2 x padi / tahun lebih	Irrigation 2 x paddy / years plus	31,427,312
Irigasi 1 x padi / tahun	Irrigation 1 x paddy / years	114,535,984
Tadah Hujan	Rain Field	197,193,872
Pasang Surut 2 x padi / tahun	Tidal Swamp 2 x paddy / years plus	11,111,073
Pasang Surut 1 x padi / tahun	Tidal Swamp 1 x paddy / years	70,626,048
Tegalan / Ladang	Field / Yard	1,131,546,624
Sayuran	Vegetables	376,589
Campuran	Mix	807,555,072
Sejenis	One Typical	913,513
Perkebunan Besar	Big Plantation	3,307,557,120
Perkebunan Rakyat	Farmer's Plantation	13,990,283,264
Padang Rumput	Savana	6,233,845
Alang-alang	Sedge	11,184,181
Semak	Bushes	566,554,752
Hutan Lebat	Bowry Forest	890,030,720
Hutan Belukar	Wilderness	5,935,190,016
Hutan Sejenis	One Type Forest	2,244,629,248
Kolam Air Tawar	Fresh Water pond	360,170
Danau / Situ / Telaga	Lake	213,724,928
Rawa	Swamp / Marsh	459,261,952
Tanah Rusak	Broken Land	7,925,292
Tanah terbuka Sementara	Temporary Open Land	83,266,688

Figure C6.2.5 shows the land use plan in Middle Land, and the area summary of the land use plan is shown on Table C6.2.4. The tasks of the land use plan in this area are management of current agriculture and protection of natural forests.

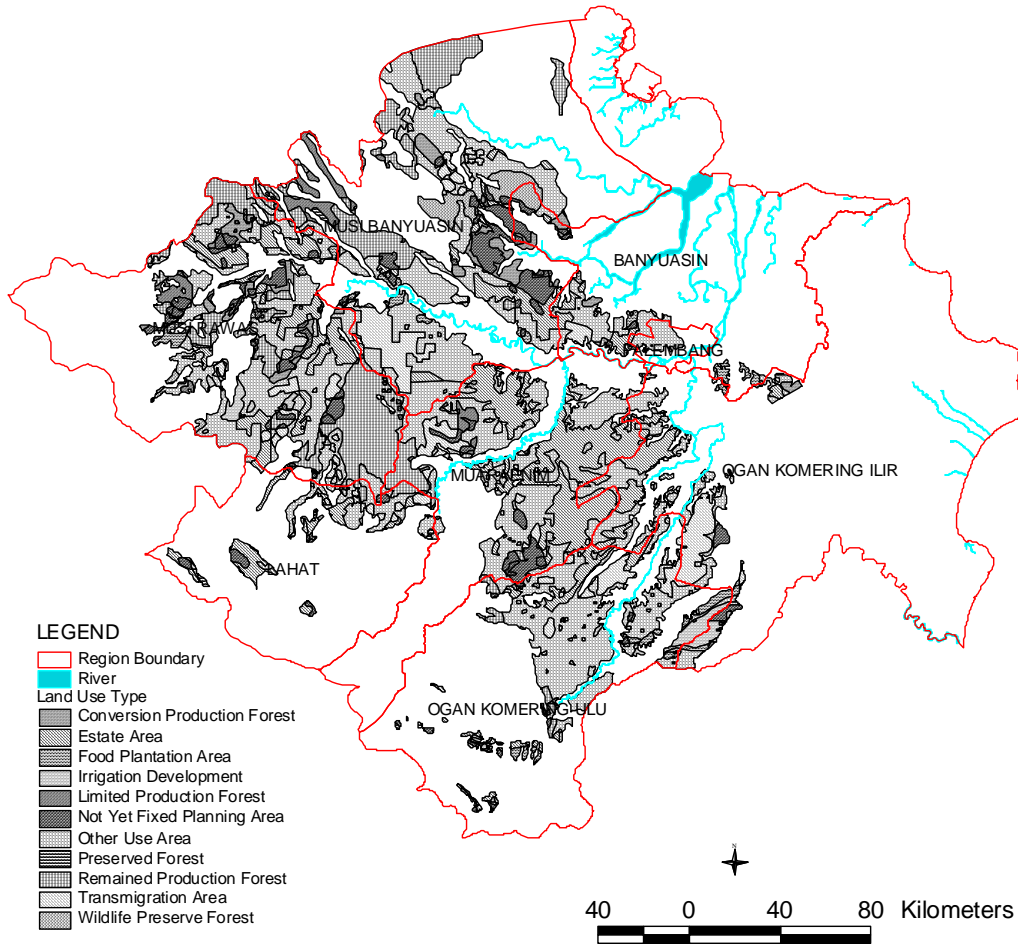


Figure C6.2.5 Land Use Plan in Middle Land

Table C6.2.4 Area Summary of Land Use Plan in Middle Land

Land Use Plan in BAHASA Indonesia	Land Use Plan in ENGLISH	AREA(m²)
Areal Penggunaan Lain	Other Use Area	12,668,450,458
Hutan Lindung	Preserved Forest	48,880,198
Hutan Produksi Terbatas	Limited Production Forest	512,730,955
Hutan Produksi Tetap	Remained Production Forest	3,897,636,497
Hutan Produksi yang Dapat Dikonversikan	Conversion Production Forest	750,929,145
Hutan Suaka Alam	Wildlife Preserve Forest	527,040,411
Kawasan Perkebunan	Estate Area	5,229,944,935
Kawasan Tanaman Pangan	Food Plantation Area	578,924,046
Kawasan Transmigrasi	Transmigration Area	2,343,409,087
Masih Tumpangusun diantara 10 rencana di atas	Not Yet Fixed Planning Area	1,956,613,344
Pengembangan Irigasi	Irrigation Development	461,392,446

6.2.3 Land Use and Land Use Plan in High Land

Figure C6.2.6 shows the current land use map in High Land, and the area summary is shown in Table C6.2.5. This area was mainly covered by people plantation (sort of coffee trees), and natural forests.

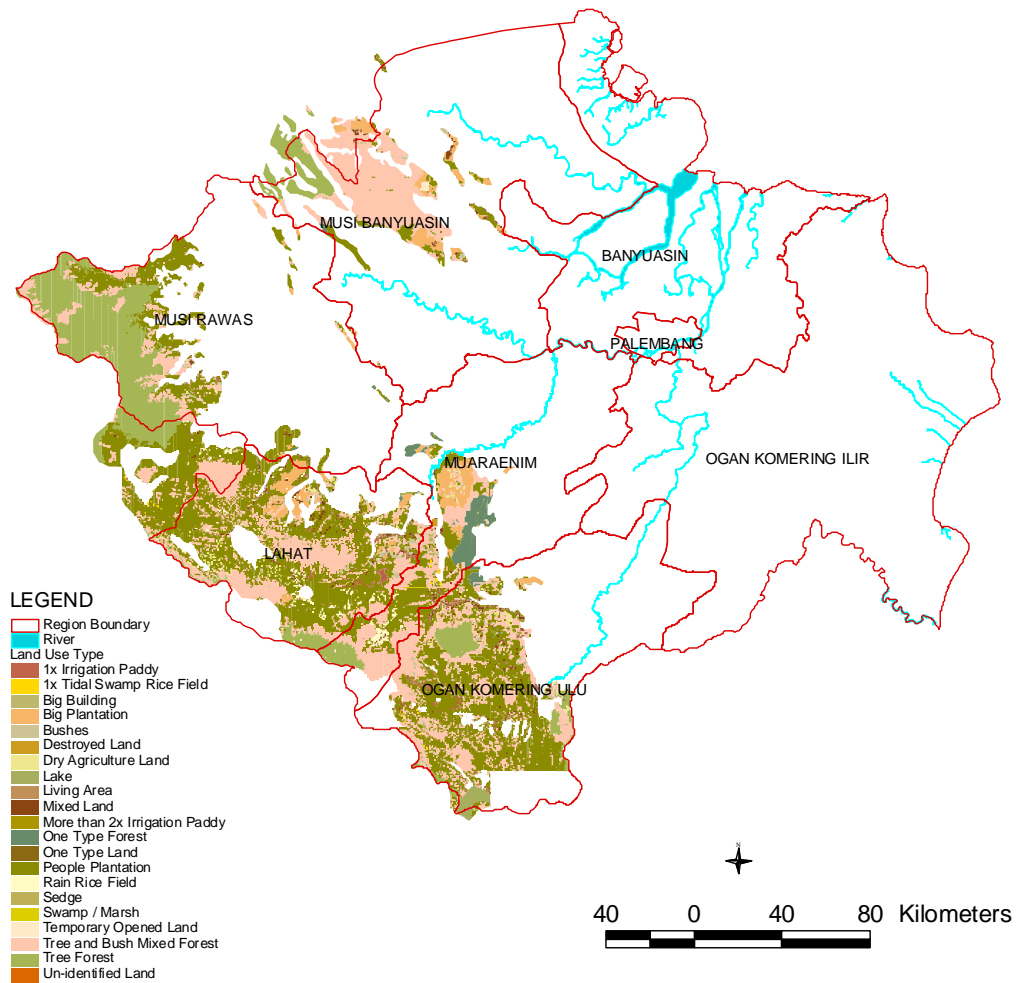


Figure C6.2.6 Land Use in High Land

Table C6.2.5 Area Summary of Land Use in High Land

Land Use in Indonesia	Land Use in English	AREA (m ²)
Kampung	Living area	83,380,776
Emplasmen	Emplasmen	962,841
Irigasi 2 x padi / tahun lebih	Irrigation 2 x paddy / years plus	882,241
Irigasi 1 x padi / tahun	Irrigation 1 x paddy / years	132,394,096
Tadah Hujan	Rain Field	176,627,664
Pasang Surut 1 x padi /	Tidal Swamp 1 x paddy / years	25,418,992
Tegalan / Ladang	Field / Yard	169,738,496
Campuran	Mix	300,952,768
Sejenis	One Typical	198,999
Perkebunan Besar	Big Plantation	958,412,800
Perkebunan Rakyat	Farmer's Plantation	9,101,908,992
Alang-alang	Sedge	17,930,776
Semak	Bushes	158,962,272
Hutan Lebat	Bowry Forest	3,531,398,912
Hutan Belukar	Wilderness	6,527,352,832
Hutan Sejenis	One Type Forest	367,971,424
Danau / Situ / Telaga	Lake	248,569,152
Rawa	Swamp / Marsh	2,389,960
Tanah Tandus	Barren Land	11,833,860
Tanah terbuka Sementara	Temporary Open Land	31,878,986

Figure C6.2.7 shows the land use plan in High Land, and the area summary of the land use plan is shown on **Table C6.2.6**. The tasks of the land use plan in this area are management of current estate areas and protection of preserved forests and natural forests.

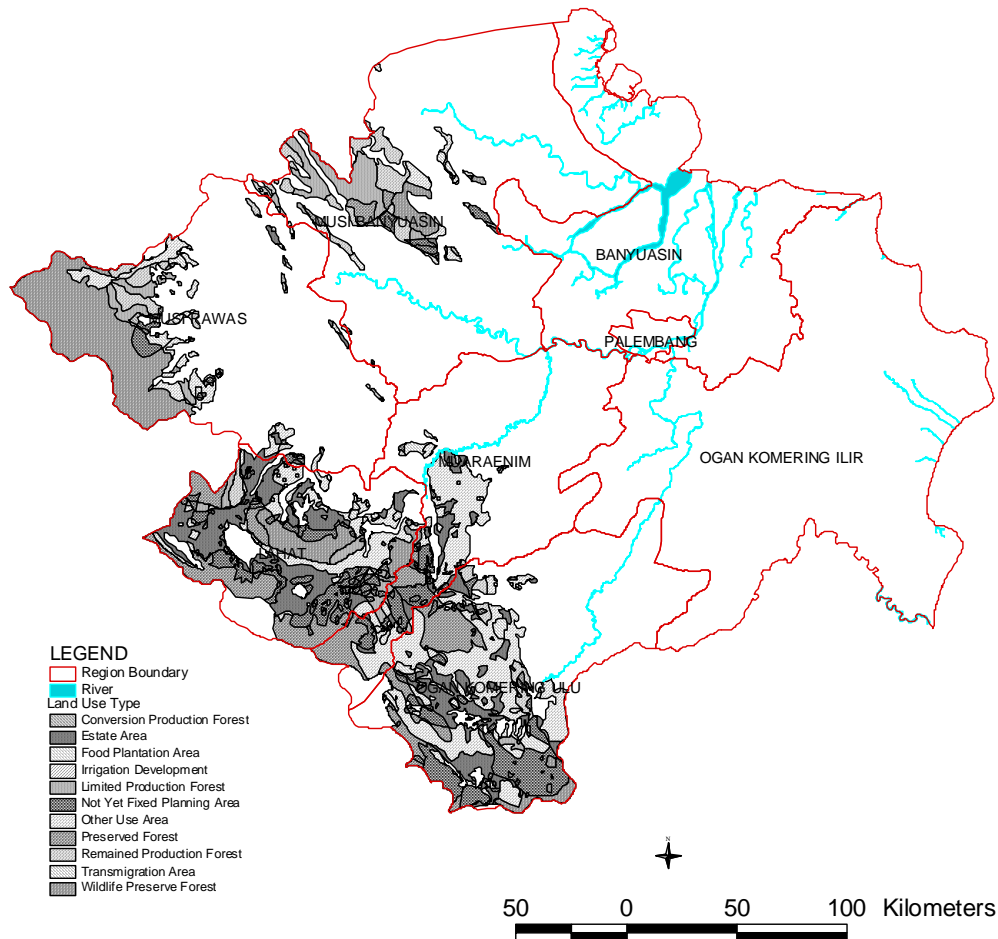


Figure C6.2.7 Land Use Plan in High Land

Table C6.2.6 Area Summary of Land Use Plan in High Land

Land Use Plan in BAHASA Indonesia	Land Use Plan in ENGLISH	AREA(m²)
Areal Penggunaan Lain	Other Use Area	5,191,436,248
Hutan Lindung	Preserved Forest	2,392,267,500
Hutan Produksi Terbatas	Limited Production Forest	1,249,695,182
Hutan Produksi Tetap	Remained Production Forest	1,319,369,537
Hutan Produksi yang Dapat Dikonversikan	Conversion Production Forest	46,019,130
Hutan Suaka Alam	Wildlife Preserve Forest	3,369,313,249
Kawasan Perkebunan	Estate Area	2,925,544,336
Kawasan Tanaman Pangan	Food Plantation Area	328,840,827
Kawasan Transmigrasi	Transmigration Area	278,840,310
Masih Tumpangusun diantara 10 rencana di atas	Not Yet Fixed Planning Area	2,900,324,340
Pengembangan Irigasi	Irrigation Development	71,318,982

6.3 Land Use by Sub-basins

The area summary of land use in every sub-basin is shown on **Annex C6.3.1**.