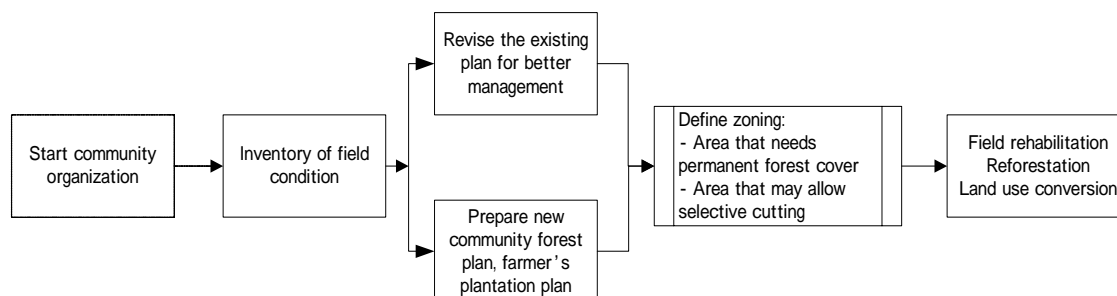


5. Program Description (continuous)

Steps for introduction of agroforestry are as follows:



6. Implementation Schedule

Implementation schedule is as follows:

Priority Program		1st Year				2nd Year				3rd Year				4th Year				5th Year				6th Year				7th Year			
No.	Title	I	II	III	IV	I	II	III	IV	I	II	III	IV	I	II	III	IV	I	II	III	IV	I	II	III	IV	I	II	III	IV
3-1	Application of agroforestry in farmer's plantations																												
3-1-1	Project formulation -Form a task team-																												
	-Choose the project sites																												
	-Negotiate with the community leaders																												
3-1-2	Planning and design -Form a model project scheme																												
	-Start community organization																												
	-Inventory of field condition																												
	-Revise the existing plan for better management																												
	-Prepare new community forest plan, farmer's plantation plan																												
	-Define zoning in the plan																												
3-1-3	Project implementation -Training-																												
	-Land preparation																												
	-Check dam construction																												
	-Nursery preparation and maintenance																												
	-Tree planting																												
	-Forest /field maintenance																												
3-1-4	Monitoring and reporting -Develop monitoring and evaluation scheme																												
	-Develop monitoring and evaluation scheme																												
	-Conduct monitoring and reporting																												
	-Revision of project scheme																												
	-Sharing project experience in inter-project communication																												

7. Program Cost (30 sites, 6,000 ha.)

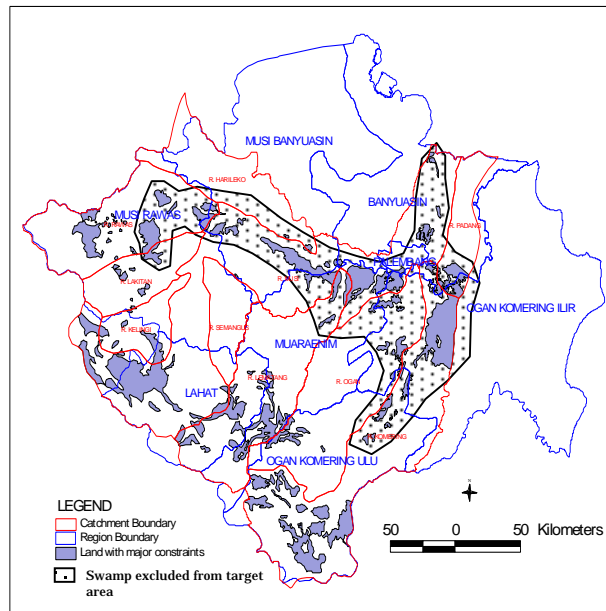
Planning and Design	Rp. 2,155 million
Land Preparation	Rp. 27,240 million
Nursery Preparation and Maintenance	Rp. 1,148 million
Tree Plantation	Rp. 13,067 million
<u>Training</u>	<u>Rp. 1,901 million</u>
Total	Rp. 45,511 million

8. Others

1. Program Title: Program 3-3
Strengthening of Agriculture/Estate/Forestry Extension

2. Location

Subject site is the same area with Program 3-1-1.



3. Objectives

- To provide better attention and advise for local farmers for better land management.
- To reduce soil erosion in farmer's plantation area
- To encourage farmers to introduce agroforestry method to use part of their house lot as home garden
- Lower farmer's temptation for short cycle of tree cutting (rubber and coffee plantations)
- Educate farmers in technique for soil conservation

4. Executing Agency

- Kabupaten- and Kecamatan-level Forest, Estate, and Agriculture Office: Responsible for provision of technical guidance to extensions.
- Provincial Forestry, Estate, and Agriculture Office: Responsible for providing general guidelines, preparation of budget, and provision of outside expert.

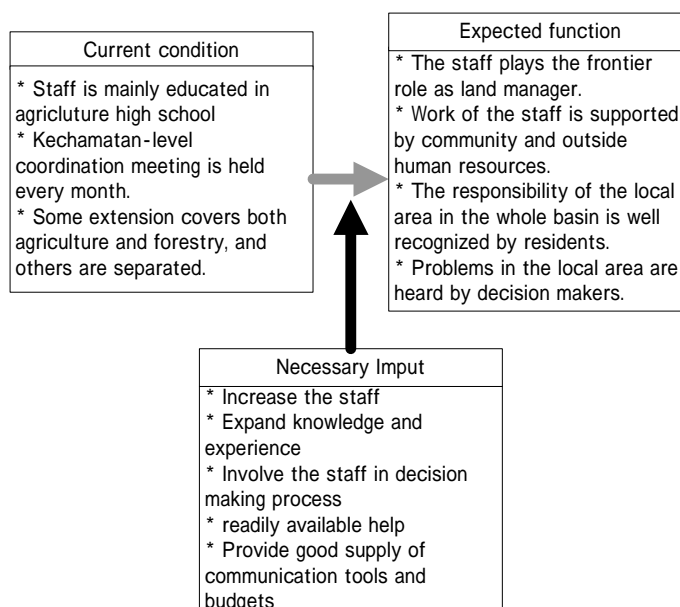
5. Program Description

The program is composed of the following activities:

- Provision of higher education/training for current staff of the extensions.
- Increase the number of staff in extensions with major land constraints.
- Newly establish extensions where closer monitoring and advice is required.
- Introduce necessary equipment, nurseries, and laboratories.

5. Program Description (continuous)

Expected function and necessary input for agriculture/forestry extensions:



6. Implementation Schedule

Implementation schedule is as follows:

Priority Program		1st Year				2nd Year				3rd Year				4th Year				5th Year				6th Year				7th Year			
No.	Title	I	II	III	IV	I	II	III	IV	I	II	III	IV	I	II	III	IV	I	II	III	IV	I	II	III	IV	I	II	III	IV
3-3	Strengthening of agriculture/ estate/ forestry extension																												
3-3-1	Project formulation																												
	-Form a task team																												
	-Choose the project sites																												
	-Negotiate with the community leaders																												
3-3-2	Implementation																												

7. Program Cost

Technical training of opponent area management	Rp. 743 million
Provision of higher education (12 months)	Rp.2,160 million
Increase the number of staff	Rp.2,520 million
Establish/renovate new extensions	Rp. 310 million
<u>Introduce necessary equipment</u>	<u>Rp. 930 million</u>
Total	Rp.6,663 million

8. Others

1. Program Title: Program 3-4

Reforestation of Production Forest and Forest Estate

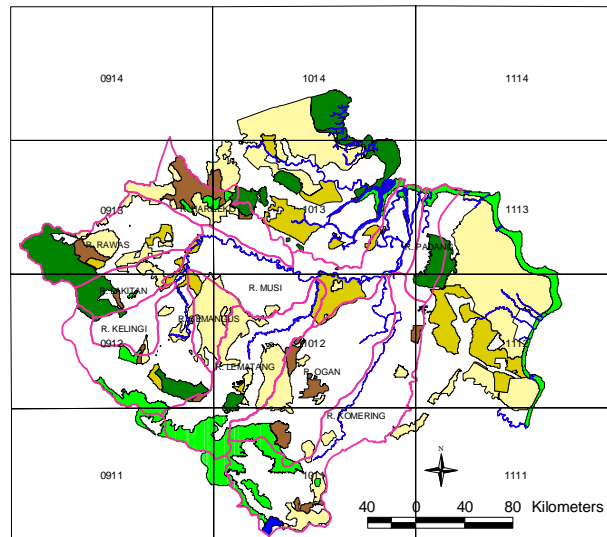
2. Location

Subject sites are the production forests that already received the Reforestation Fund in the past.

The map shows all the production forests (Permanent, Conversion, and Limited Production), together with Protection and Conservation Forests.

Priority 21 sites:

HP. Mangsang Mendis, HP Rawas Utara I, HP Rawas Lakitan, HPT Rawas Lakitan, HP Bukit Balai, HPT Bukit Balai, HL Bukit Balai, HPT Gumai Tebing Tinggi, HPT Isau-Isau, HP Air Empelu, HP Bukit Asam, HPT Saka, HPT Meranti S. Kapas S. Saka Suban, HPT. Meranti LB. Buah, HP. Meranti S. Bayat S. Bahar, HP. Meranti S. Merah, HP. Sungai Lalan, HP Simpangheran Beyuku, HP Mesuji III, HPT. Air Tebangka, HP. Saka.



Legend

- Index 1:250,000
- Catchment
- River

Forest Plan

- Protection Forest (Hutan Lindung)
- Conservation Forest (Hutan Suaka Alam)
- Permanent Production Forest (Hutan Produksi Tetap)
- Production Forest available for Conversion (HPK)
- Limited Production Forest (Hutan Produksi Terbatas)

3. Objectives

- To reduce soil erosion in Production Forest area
- To make sure that the obligation of reforestation by the forest companies are fulfilled as intended.
- To rehabilitate forest resource of the Province for sustainable use in the future.

4. Executing Agency

- Provincial Forestry office: Responsible for monitoring the reforestation fund and its recipient companies, providing reforestation guidances based on national and international guidelines, coordinating monitoring activities of tree growth using satellite images, consulting with Ministry of Forestry to establish stronger legal action to monitor the use of Reforestation Fund..
- Forest Police: Responsible for enforcing the forest law against illegal activities by forest companies.
- Kabupatens and agriculture extension offices: Responsible for monitoring of production forests in their regions.

5. Program Description

The program is composed of the following activities:

5. Program Description (continuous)

Guidance and communication

- The Provincial guidance for forest and plantation companies.
- Formation of investigation team that include members from forest industry, forestry research, environmental NGOs, and provincial and local government.

Encouraging Actions

- Merit for corporation that achieved its reforestation obligation.
- Additional provincial grant to support maintenance work for reforestation.

Enforcing Actions

- The timing of DR payment to be delayed to after-reforestation.
- Sabotage fine to be charged for those misconduct.
- Names of the companies that failed obligatory reforestation to be announced in mass media.
- Log production allowance to reflect amount of reforestation work achieved.

6. Implementation Schedule

Implementation schedule is as follows:

No.	Priority Program Title	1st Year				2nd Year				3rd Year				4th Year				5th Year				6th Year				7th Year			
		I	II	III	IV	I	II	III	IV	I	II	III	IV	I	II	III	IV	I	II	III	IV	I	II	III	IV	I	II	III	IV
3-4	Reforestation of production forest																												
3-4-1	Guidance and communication																												
	-Guidance for forest and plantation companies																												
	-Formation of investigation team																												
	-Monitoring of reforestation activities and achievement																												
3-4-2	Encouraging actions																												
	-Preparation of provincial legislations																												
3-4-3	Enforcing actions																												
	-Preparation of provincial legislations																												
	-Consultation with national government for stronger policies																												

7. Program Cost

Research of industry plantation forest
for 21 sites for priority. Rp. 87.8 million

8. Others

1. Program Title: Program 3-6

Inner- and Inter-Basin Coordination

2. Location

Subject site is the whole Province.

Sub-basins may be grouped into 5 groups as follows:

- 1) Rawas, Lakitan,
- 2) Lematang,
- 3) Musi, Harileko, Semangus, Kelingi,
- 4) Ogan, Komerling.



3. Objectives

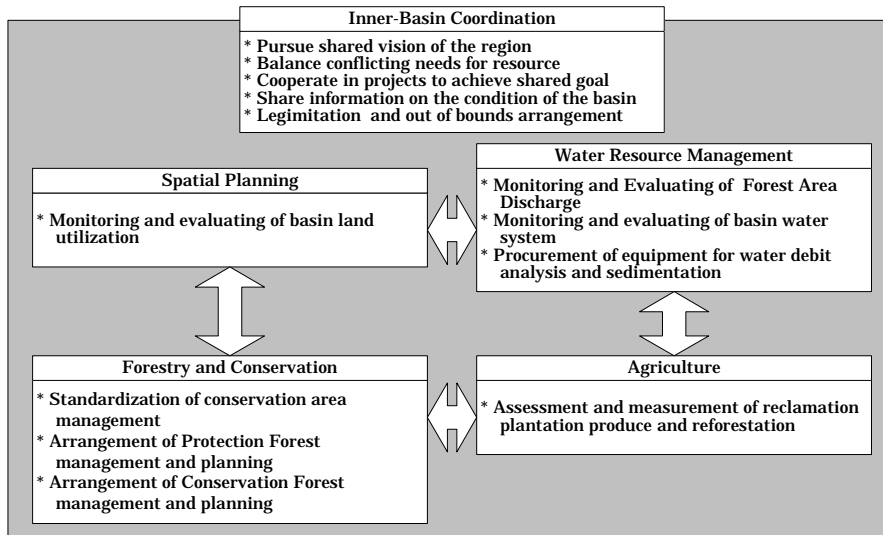
- To realize sound and comprehensive resource management of the Musi River Basin.
- To encourage local government manage their own resources in coordination with other government body within the same sub-basin.

4. Executing Agency

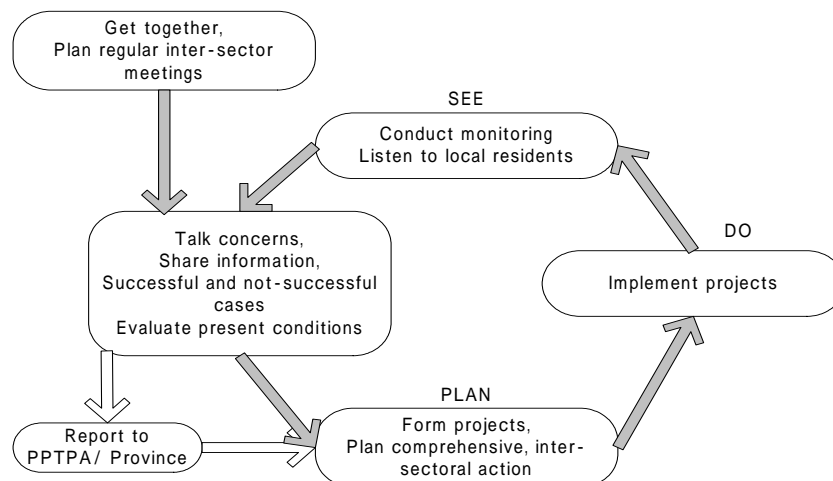
- The Governor's Office: Responsible for formation of Musi River Basin PPTPA, in cooperation with various related provincial office, academic researchers, and NGOs.
- Kabupatens: Responsible for sub-basin level organization similar to the PPTPA, with help from Provincial Governor's Office, and the PPTPA itself.

5. Program Description

Issues expected to be coordinated on the table of the coordinating bodies are as follows:



Expected activities of the coordinating bodies are as follows:



6. Implementation Schedule

Formation of sub-basin or Kabupaten level organization may be started prior to the PPTPA, or after, depending on willingness of Kabupatens.

7. Program Cost

Refer to Program 6-5-3.

8. Others