

**BASIC DESIGN STUDY REPORT  
ON  
THE PROJECT FOR CONSTRUCTION  
OF  
PRIMARY SCHOOLS  
IN  
THE KINGDOM OF LESOTHO**

**AUGUST 2003**

**JAPAN INTERNATIONAL COOPERATION AGENCY  
PACIFIC CONSULTANTS INTERNATIONAL**

## PREFACE

In response to a request from the Government of the Kingdom of Lesotho, the Government of Japan decided to conduct a basic design study on the Project for Construction of Primary School and entrusted the study to the Japan International Cooperation Agency (JICA).

JICA sent to Lesotho a study team from 22 February to 8 March, 2003 and from 23 March to 13 June, 2003.

The team held discussions with the officials concerned of the Government of Lesotho, and conducted a field study at the study area. After the team returned to Japan, further studies were made. Then, a mission was sent to Lesotho in order to discuss a draft basic design, and as this result, the present report was finalized.

I hope that this report will contribute to the promotion of the project and to the enhancement of friendly relations between our two countries.

I wish to express my sincere appreciation to the officials concerned of the Government of the Kingdom of Lesotho for their close cooperation extended to the teams.

August, 2003

A handwritten signature in black ink, consisting of stylized Japanese characters, likely reading '川上隆明' (Kawakami Takao).

Takao Kawakami

President

Japan International Cooperation Agency

August, 2003

## **LETTER OF TRANSMITTAL**

We are pleased to submit to you the Basic Design Study Report on the Project for Construction of Primary Schools in the Kingdom of Lesotho.

This study was conducted by Pacific Consultants International, under a contract to JICA, during the period from February, 2003 to August, 2003. In conducting the study, we have examined the feasibility and rationale of the Project with due consideration to the present situation of Lesotho and formulated the most appropriate basic design for the Project under Japan's Grant Aid scheme.

Finally, we hope that this report will contribute to further promotion of the Project.

Very truly yours,

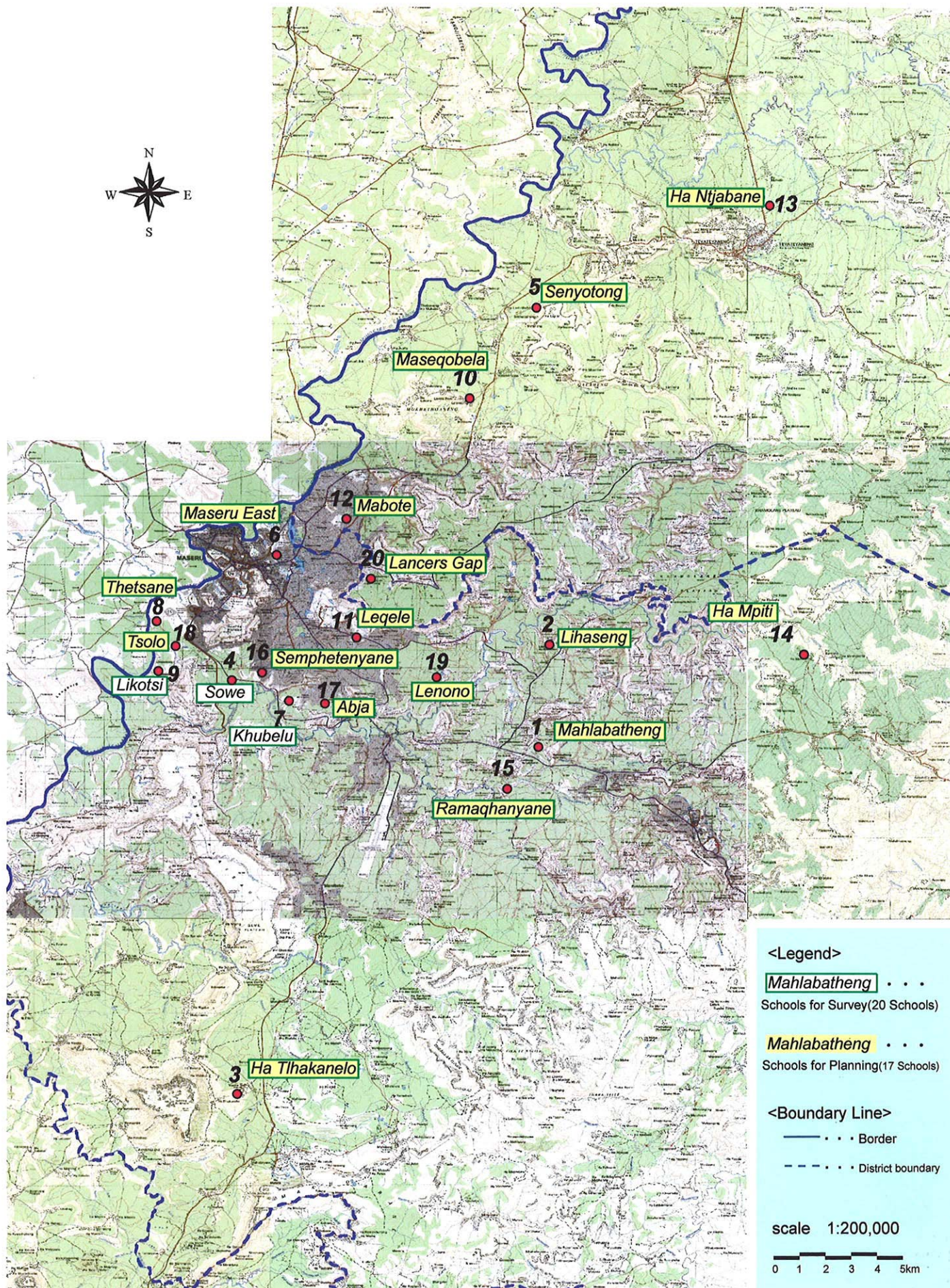
Kazuhiro Miyatake  
Chief Consultant,  
Basic Design Study Team on  
The Project for Construction of Primary Schools  
in the Kingdom of Lesotho  
Pacific Consultants International





Location Map of the Target Area for Survey





Location Map of the Sites for Survey