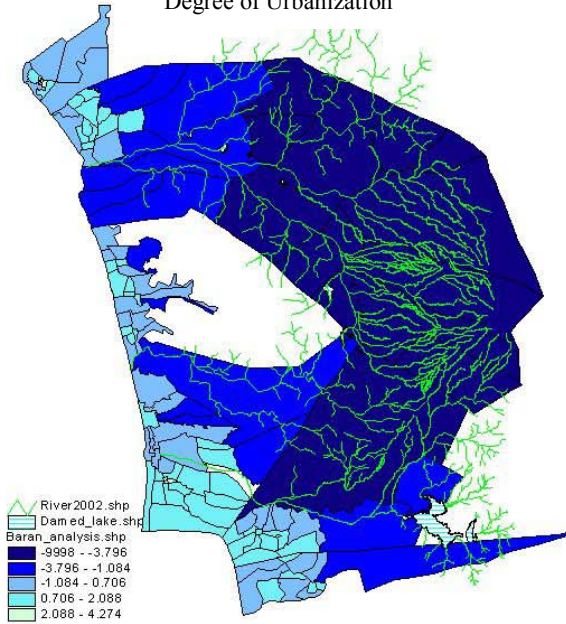
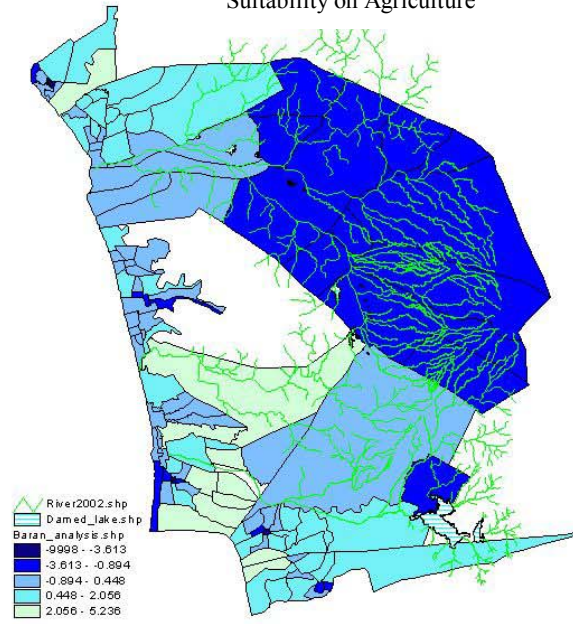


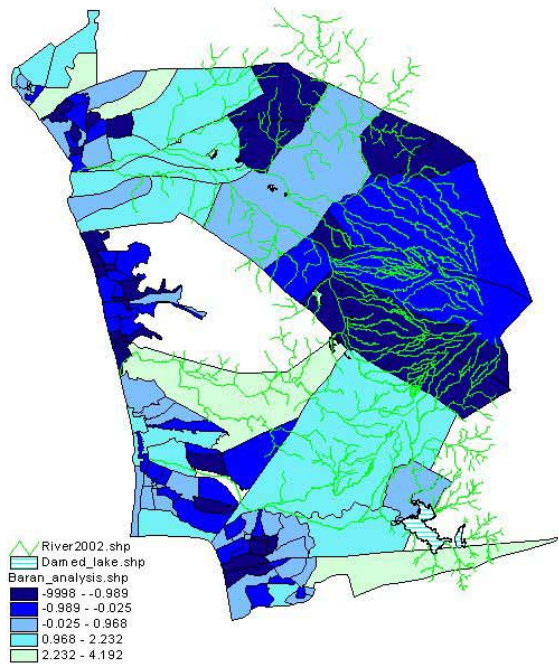
The Principal Component 1  
Degree of Urbanization



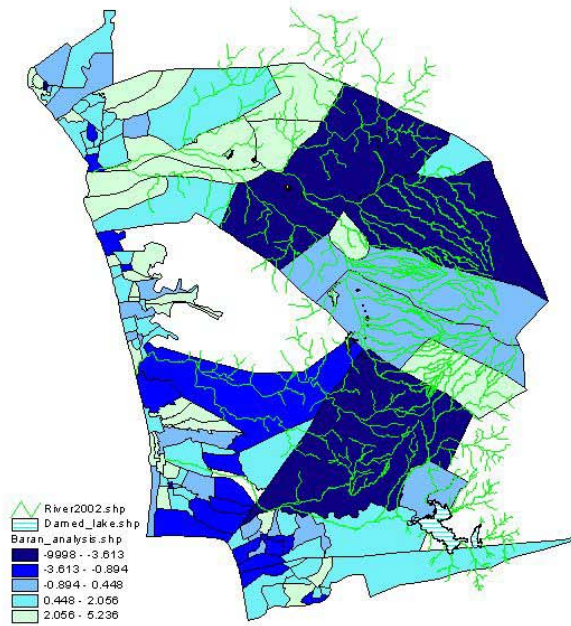
The Principal Component 2  
Suitability on Agriculture



The Principal Component 3  
Accessibility for Development



The Principal Component 4  
Sufficiency of Social Infrastructure



THE GOVERNMENT OF THE PHILIPPINES  
THE DEPARTMENT OF PUBLIC WORKS AND HIGHWAYS

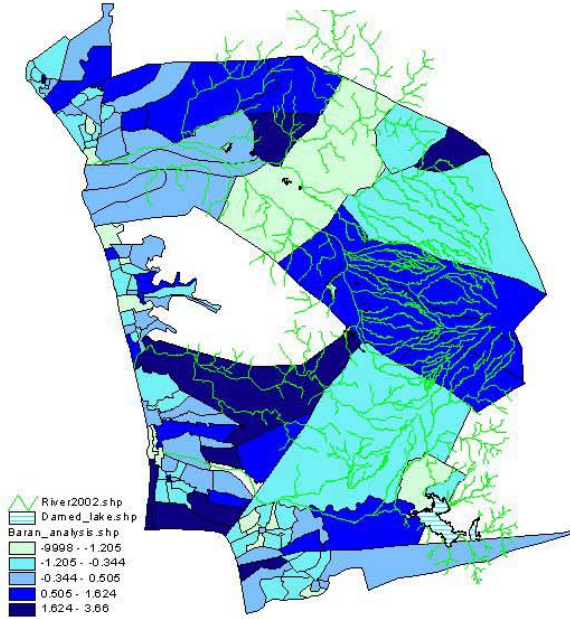
**The Study on Sabo and Flood Control for  
Western River Basins of Mount Pinatubo in  
the Republic of the Philippines**

JAPAN INTERNATIONAL COOPERATION AGENCY

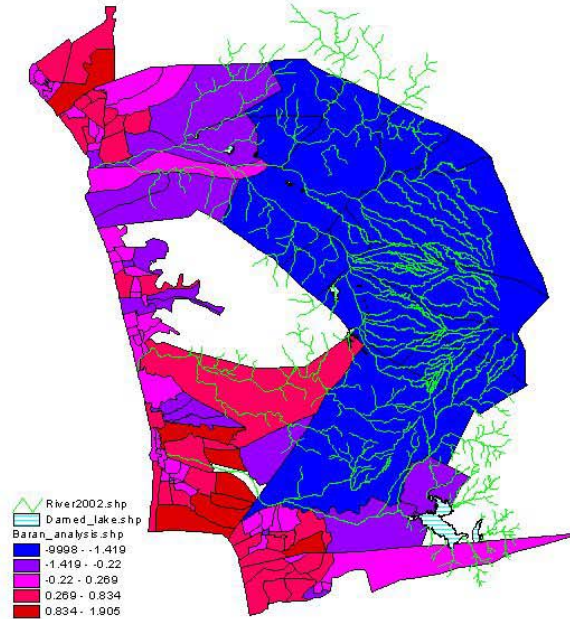
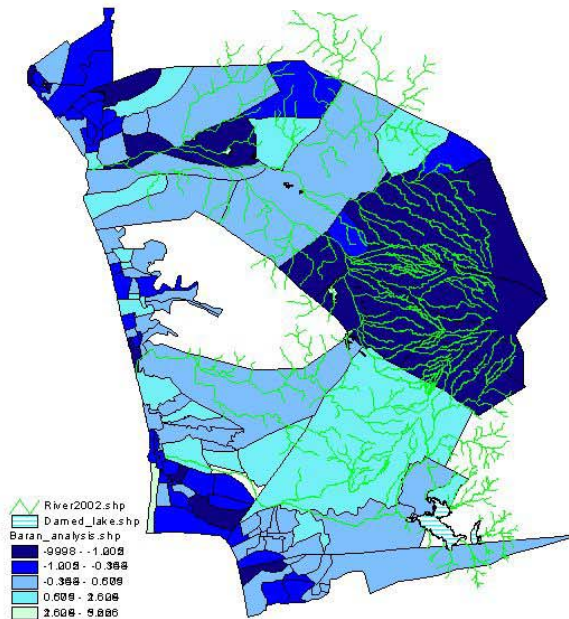
**Figure 2.2.2**

**Distribution of Principal Component for Each  
Barangay**

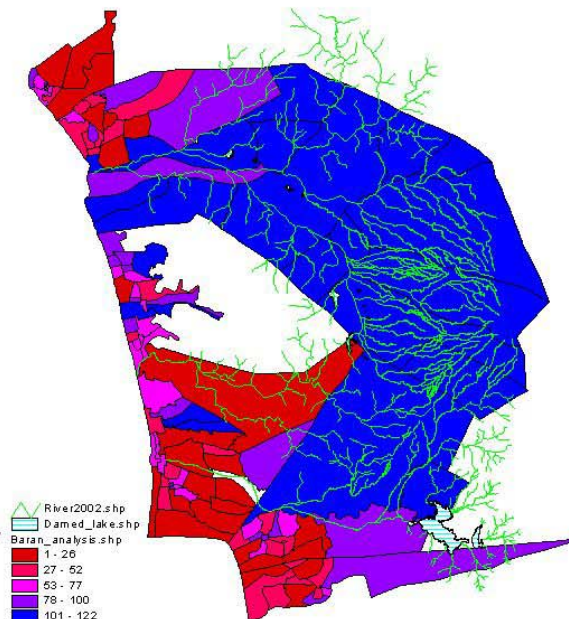
The Principal Component 5  
Accessibility to Education  
Opportunities



The Principal Component 6  
Degree of Subsidence from  
Government



Total point of the Principal Component



Ranking of the Principal Component point

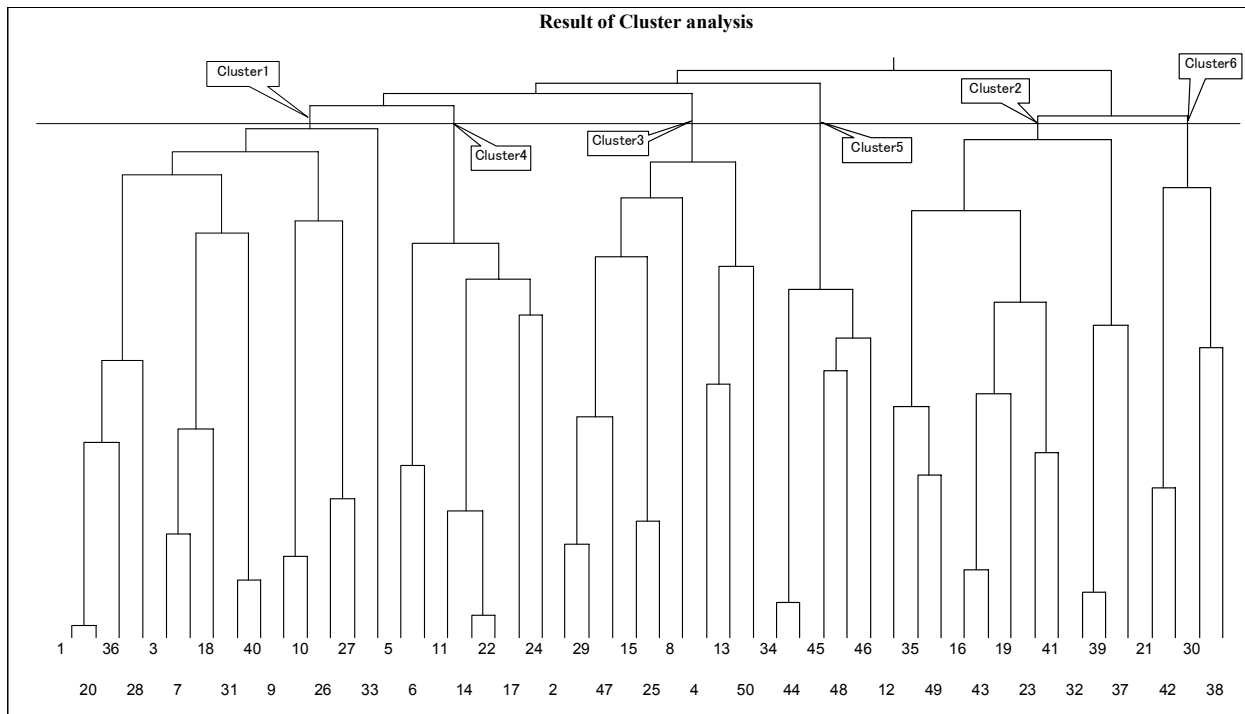
THE GOVERNMENT OF THE PHILIPPINES  
THE DEPARTMENT OF PUBLIC WORKS AND HIGHWAYS

**The Study on Sabo and Flood Control for  
Western River Basins of Mount Pinatubo in  
the Republic of the Philippines**

JAPAN INTERNATIONAL COOPERATION AGENCY

**Figure 2.2.3**

**Total Point and Ranking of Principal  
Component for Each Barangay**



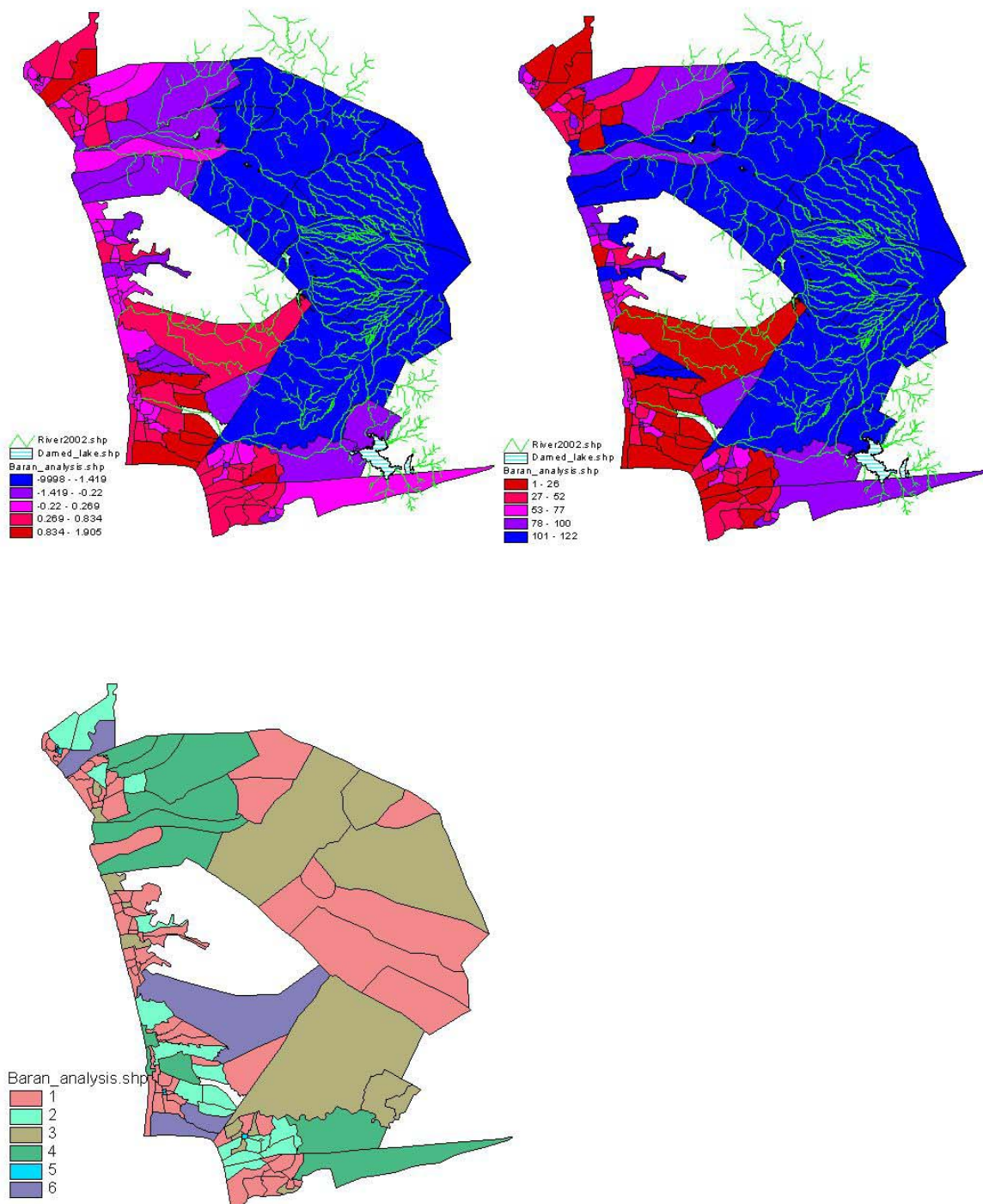
Legend of Graph	Class No.	Municipality Name	Barangay Name	Legend of Graph	Class No.	Municipality Name	Barangay Name	Legend of Graph	Class No.	Municipality Name	Barangay Name
1	1	Botolan	Bancal	2	3	Botolan	Bangan	28	1	Cabangan	Felmidia-Diaz
1	1	Botolan	Batonlapoc	2	3	Castellejos	San Nicolas	29	3	Cabangan	Mabanglit
1	1	Botolan	Beneg	3	1	Botolan	Belbel	29	3	Cabangan	Sto.Nino
1	1	Botolan	Binuclutan	3	1	Botolan	Burgos	29	3	San Marcelino	Aglao
1	1	Botolan	Capayawan	3	1	Botolan	Cabatuan	29	3	San Marcelino	Consuelo Norte
1	1	Botolan	Carael	4	3	Botolan	Maguisquis	29	3	San Marcelino	Consuelo Sur
1	1	Botolan	Danacbunga	5	4	Botolan	Malomboy	29	3	San Marcelino	La Paz
1	1	Botolan	Paco	6	4	Botolan	Mamboq	29	3	San Marcelino	Lucero
1	1	Botolan	Parel	7	1	Botolan	Moraza	30	6	San Narciso	Beddena
1	1	Botolan	San Isidro	8	3	Botolan	Nacolcol	31	1	San Narciso	Candelaria
1	1	Botolan	Tampo	9	1	Botolan	Owaog-Nebloc	32	2	San Narciso	Dallipawen
1	1	San Felipe	Faranal	10	1	Botolan	Palis	33	1	San Narciso	La Paz
1	1	San Felipe	Rosete	11	4	Botolan	Panan	34	5	San Narciso	Libertad
1	1	San Felipe	San Rafael	11	4	Botolan	Porac	34	5	San Narciso	San Jose
1	1	Cabangan	Arew	11	4	San Felipe	Amagna	34	5	Iba	Zone4
1	1	Cabangan	Cadmang-Reserva	12	2	Botolan	Paudpod	35	2	San Narciso	Namatacan
1	1	Cabangan	Camiing	12	2	Cabangan	Dolores	35	2	San Marcelino	Linunungan
1	1	Cabangan	Casabaan	13	3	Botolan	Poonbato	36	1	San Narciso	Omaya
1	1	Cabangan	Laoag	14	4	Botolan	San Juan	37	2	San Narciso	Paite
1	1	Cabangan	New San Juan	14	4	San Marcelino	San Rafael	38	6	San Narciso	Simminublan
1	1	Cabangan	San Antonio	15	3	Botolan	San Miguel	39	2	Castellejos	Buenavista
1	1	Cabangan	San Isidro	16	2	Botolan	Santiago	40	1	Castellejos	San Roque
1	1	Cabangan	San Juan(pob)	16	2	San Narciso	Grunlo	41	2	Iba	Dirita
1	1	Cabangan	Sta.Rita	16	2	San Marcelino	Nagbunga	42	6	Iba	Palanginan
1	1	Cabangan	Tondo	16	2	San Marcelino	Rabanes	43	2	Iba	Sta Barbara
1	1	San Narciso	Aluisi	17	4	Botolan	Taugtog	44	5	Iba	Zone2
1	1	San Narciso	Natividad	17	4	Castellejos	San Pablo	45	5	Iba	Zone3
1	1	San Narciso	Patro cinio	18	1	Botolan	Villar	46	5	Iba	Zone5
1	1	San Narciso	San Juan	19	2	San Felipe	Apostol	47	3	San Marcelino	Buhawen
1	1	San Narciso	San Pascual	20	1	San Felipe	Balincauing	48	5	San Marcelino	Central(pob.)
1	1	San Narciso	San Rafael	20	1	San Felipe	Feria	49	2	San Marcelino	Rizal
1	1	Castellejos	Looc	20	1	Cabangan	Anonang	49	2	San Marcelino	San Guillermo
1	1	Castellejos	Magsaysay	20	1	Cabangan	Lombay	49	2	San Marcelino	San Isidro
1	1	Castellejos	Nagbayan	20	1	Cabangan	Longos	50	3	San Marcelino	Sta.Fe
1	1	Castellejos	Nagbunga	20	1	Cabangan	San Rafael				
1	1	Castellejos	San Agustin	20	1	Castellejos	San Juan				
1	1	Castellejos	San Jose	20	1	Iba	Zone6				
1	1	Castellejos	Sta.Maria	21	6	San Felipe	Maloma				
1	1	Iba	Lipay Dingin	22	4	San Felipe	Manglicmot				
1	1	Iba	Sto Rosario	23	2	San Felipe	Sindol				
1	1	Iba	Zone1	24	4	San Felipe	Sto.Nino				
1	1	San Marcelino	Burgos	25	3	Cabangan	Apo-Apo				
1	1	San Marcelino	Laoag	26	1	Cabangan	Banuanbavo(pob.)				
1	1	San Marcelino	Linasin	27	1	Cabangan	Del carmen				

THE GOVERNMENT OF THE PHILIPPINES  
THE DEPARTMENT OF PUBLIC WORKS AND HIGHWAYS

**The Study on Sabo and Flood Control for  
Western River Basins of Mount Pinatubo in  
the Republic of the Philippines**

JAPAN INTERNATIONAL COOPERATION AGENCY

**Figure 2.2.4**  
**Result of Cluster Analysis**



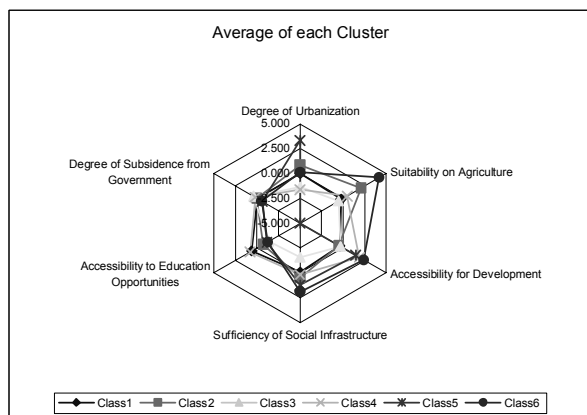
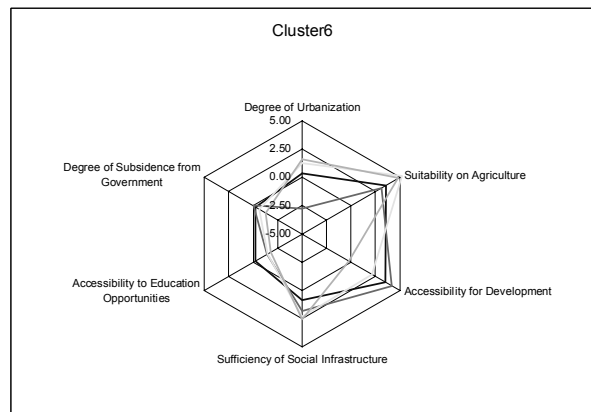
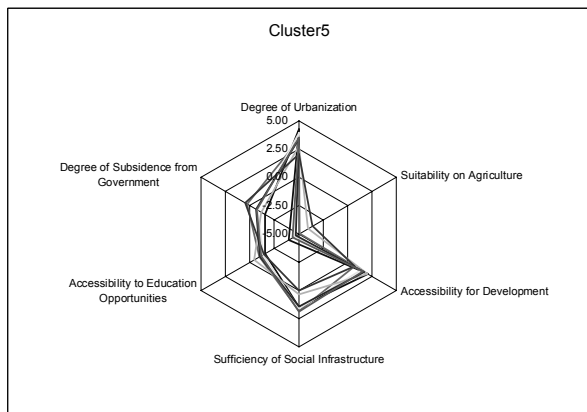
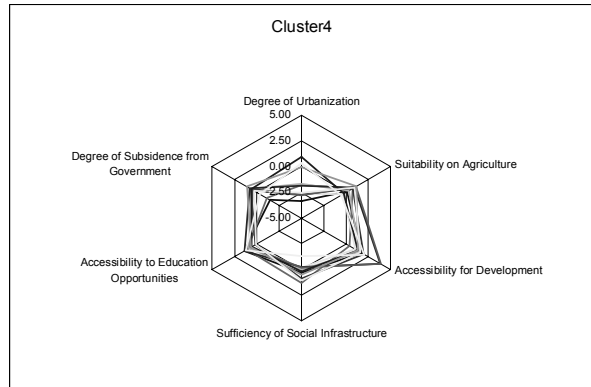
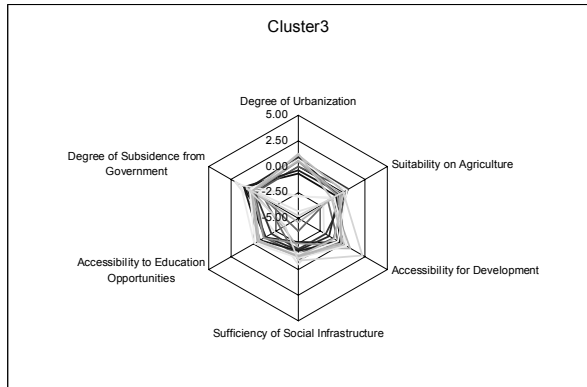
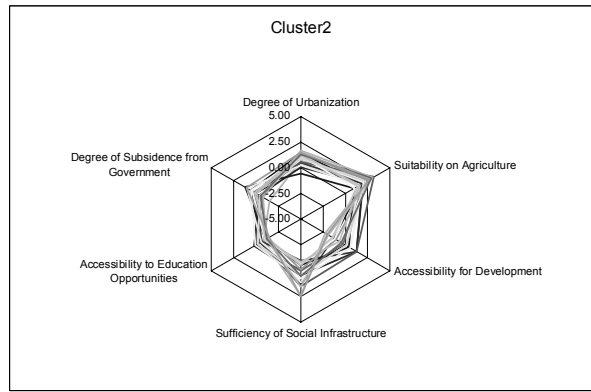
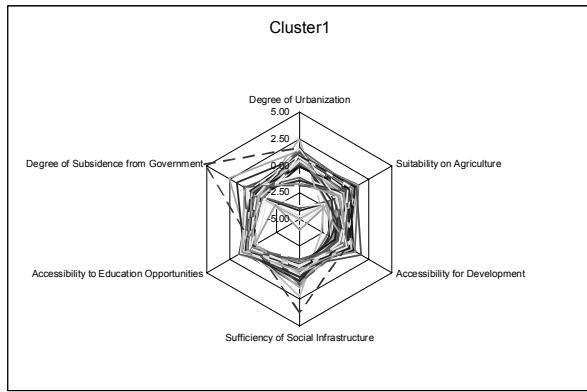
THE GOVERNMENT OF THE PHILIPPINES  
THE DEPARTMENT OF PUBLIC WORKS AND HIGHWAYS

**The Study on Sabo and Flood Control for  
Western River Basins of Mount Pinatubo in  
the Republic of the Philippines**

*JAPAN INTERNATIONAL COOPERATION AGENCY*

**Figure 2.2.5**

**Result of Principal Components Analysis and  
Cluster Analysis**



THE GOVERNMENT OF THE PHILIPPINES  
THE DEPARTMENT OF PUBLIC WORKS AND HIGHWAYS

**The Study on Sabo and Flood Control for  
Western River Basins of Mount Pinatubo in  
the Republic of the Philippines**

JAPAN INTERNATIONAL COOPERATION AGENCY

**Figure 2.2.6**

**Relationship between Result of Cluster  
Analysis and Principal Components**



THE GOVERNMENT OF THE PHILIPPINES  
THE DEPARTMENT OF PUBLIC WORKS AND HIGHWAYS

**The Study on Sabo and Flood Control for  
Western River Basins of Mount Pinatubo in  
the Republic of the Philippines**

JAPAN INTERNATIONAL COOPERATION AGENCY

**Figure 2.2.7**

**Hypothetical Condition on Principal  
Components Analysis**