

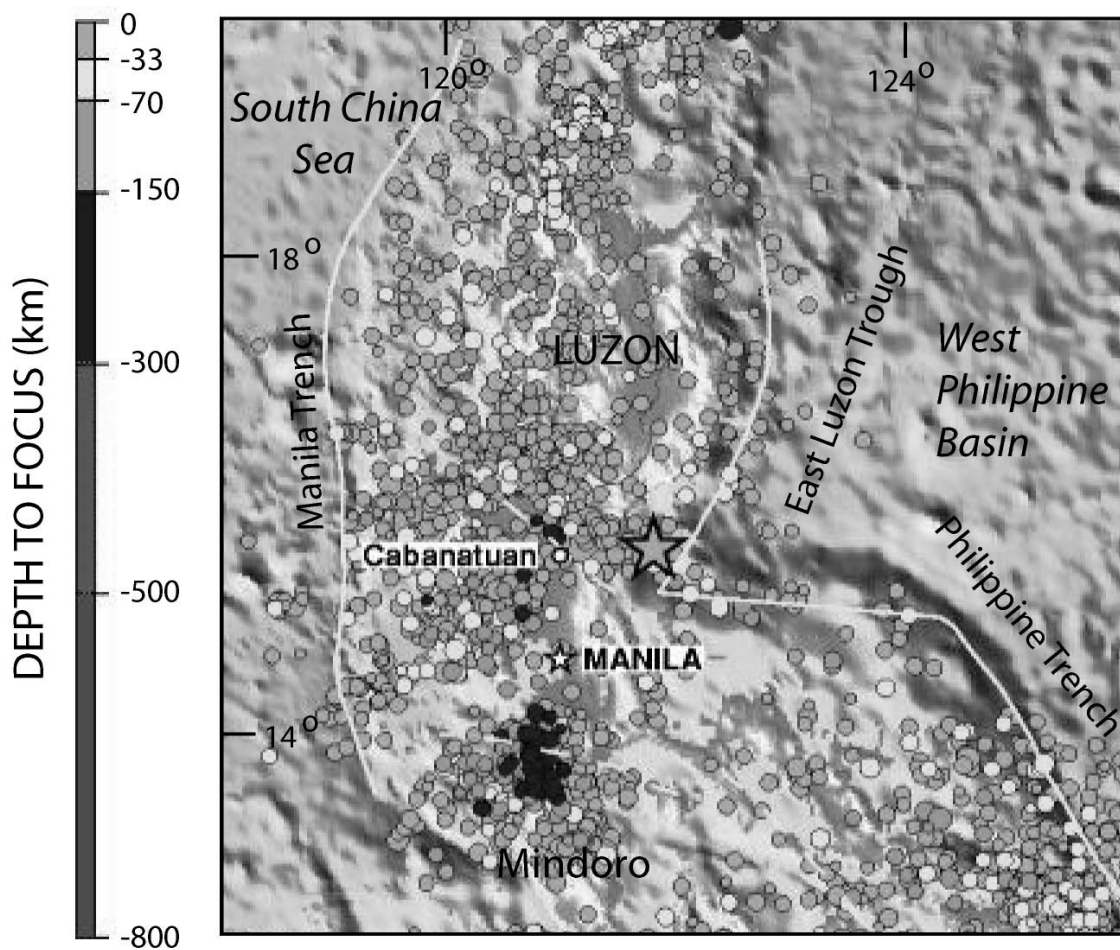
THE GOVERNMENT OF THE PHILIPPINES  
THE DEPARTMENT OF PUBLIC WORKS AND HIGHWAYS

**The Study on Sabo and Flood Control for  
Western River Basins of Mount Pinatubo in the  
Republic of the Philippines**

JAPAN INTERNATIONAL COOPERATION AGENCY

**Figure 3.1.4**

**Principal Faults in the Vicinity of  
Mount Pinatubo**



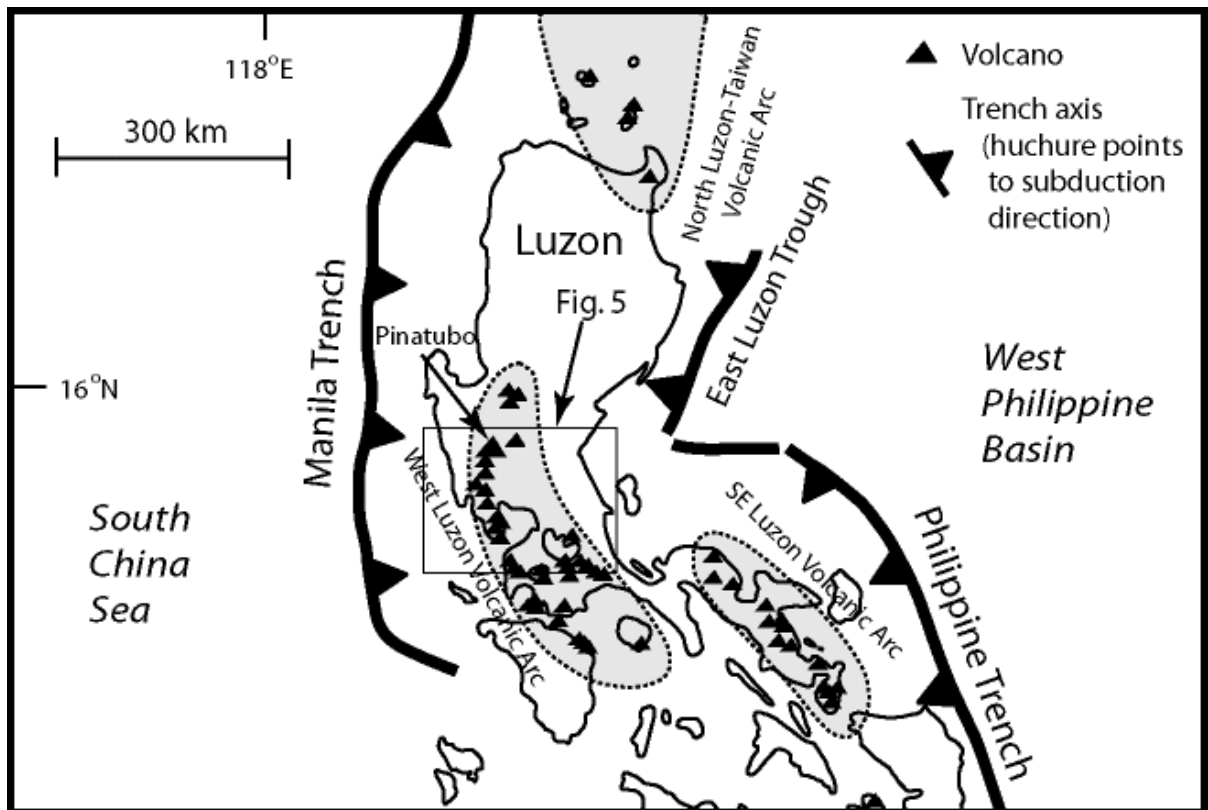
THE GOVERNMENT OF THE PHILIPPINES  
THE DEPARTMENT OF PUBLIC WORKS AND HIGHWAYS

**The Study on Sabo and Flood Control for  
Western River Basins of Mount Pinatubo in the  
Republic of the Philippines**

*JAPAN INTERNATIONAL COOPERATION AGENCY*

**Figure 3.1.5**

**Seismicity in Luzon from 1990 to March 2,  
2003**

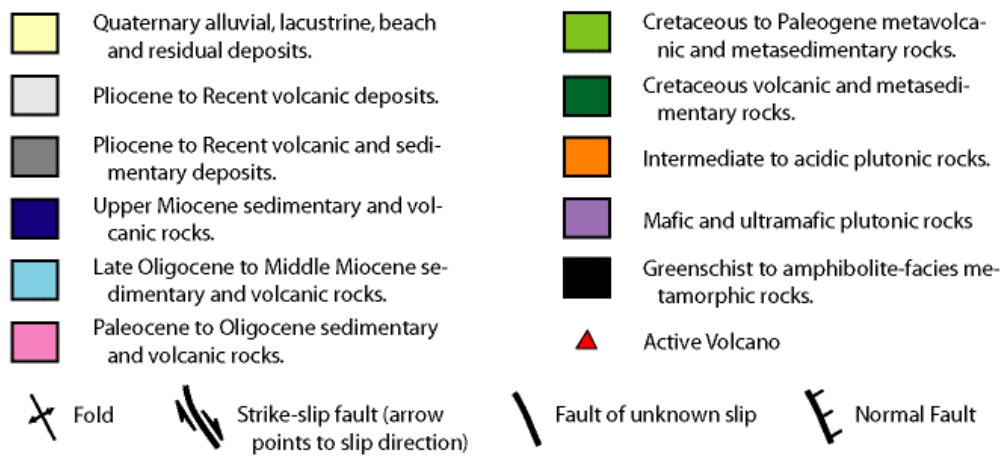
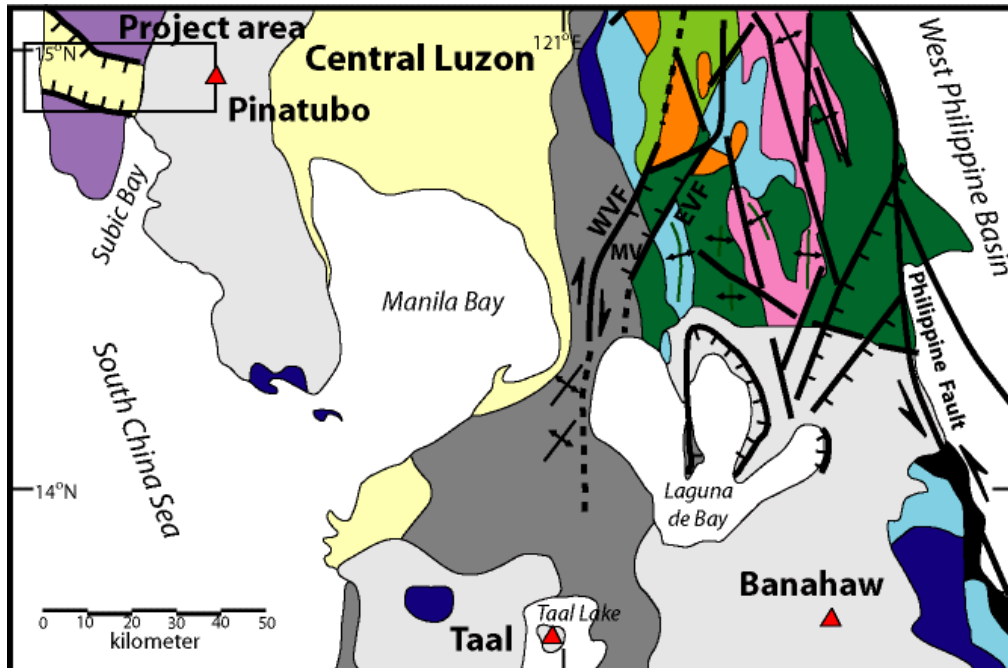


THE GOVERNMENT OF THE PHILIPPINES  
 THE DEPARTMENT OF PUBLIC WORKS AND HIGHWAYS

**The Study on Sabo and Flood Control for  
 Western River Basins of Mount Pinatubo in the  
 Republic of the Philippines**

*JAPAN INTERNATIONAL COOPERATION AGENCY*

**Figure 3.1.6**  
**Map showing the Three Magmatic Arcs in  
 Luzon that Host Active Volcanoes**



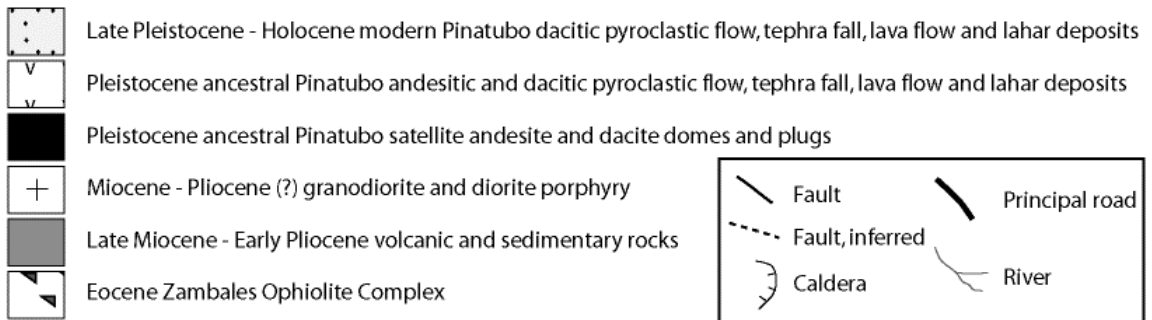
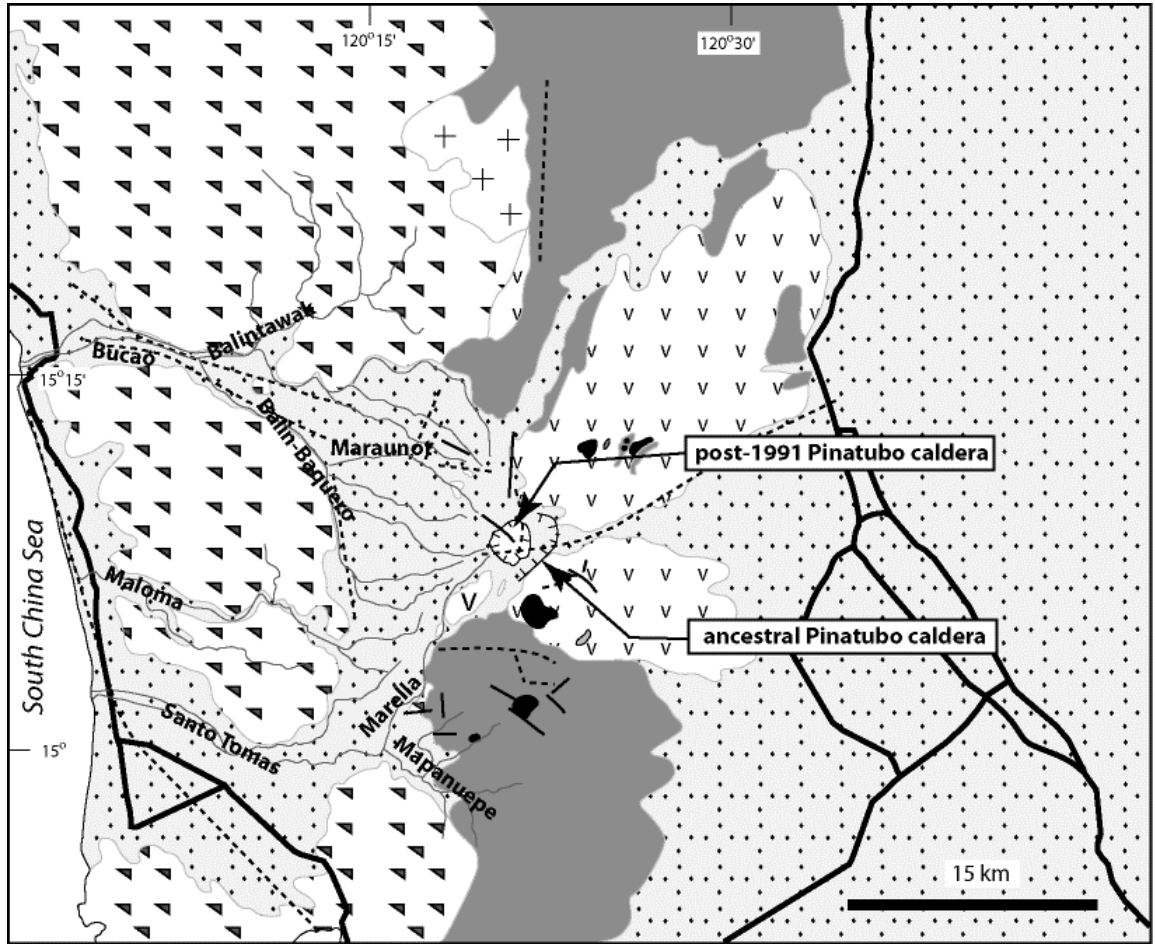
THE GOVERNMENT OF THE PHILIPPINES  
THE DEPARTMENT OF PUBLIC WORKS AND HIGHWAYS

**The Study on Sabo and Flood Control for  
Western River Basins of Mount Pinatubo in the  
Republic of the Philippines**

JAPAN INTERNATIONAL COOPERATION AGENCY

**Figure 3.1.7**

**Map showing the Regional Stratigraphy and  
Principal Geologic Structures in Central  
Luzon**



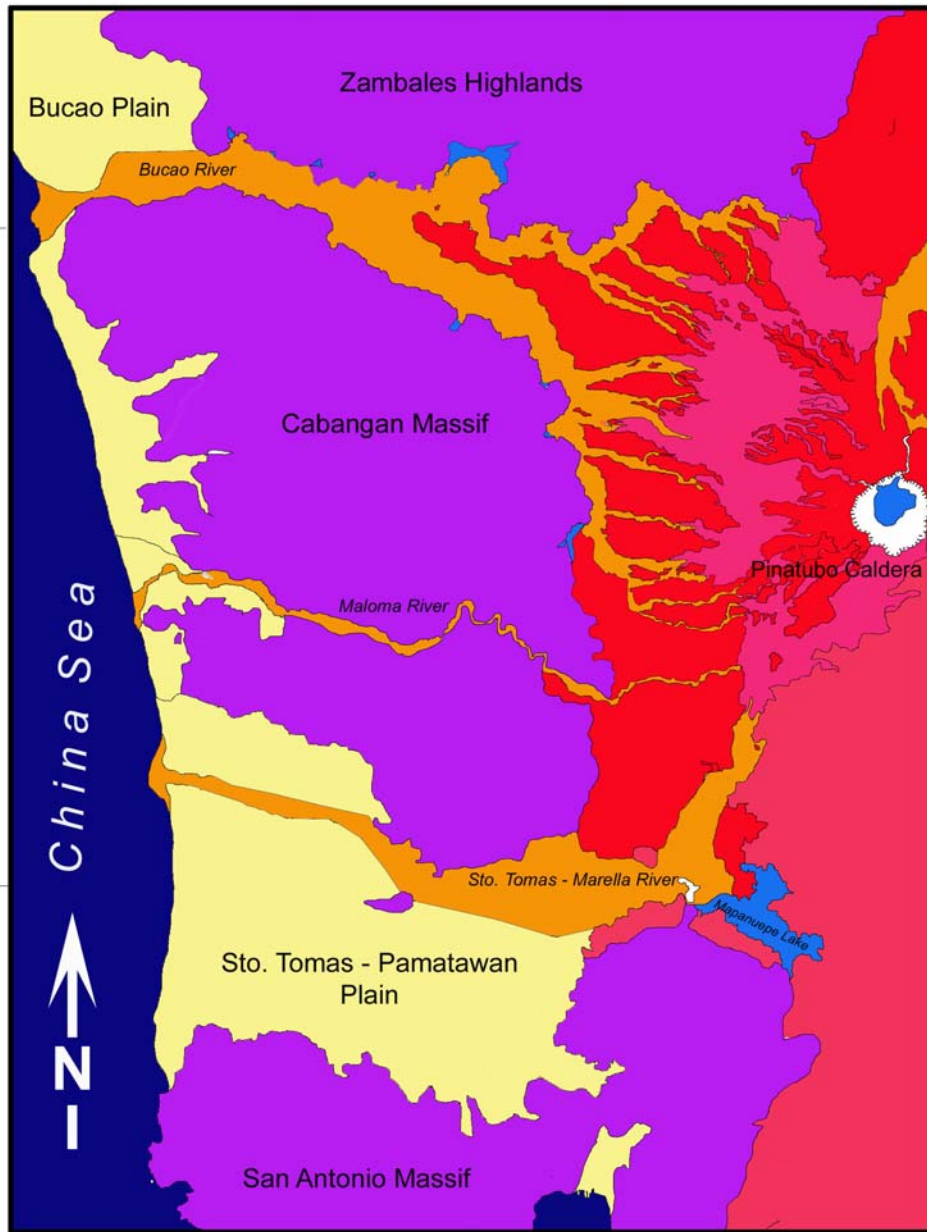
THE GOVERNMENT OF THE PHILIPPINES  
 THE DEPARTMENT OF PUBLIC WORKS AND HIGHWAYS

**The Study on Sabo and Flood Control for  
 Western River Basins of Mount Pinatubo in the  
 Republic of the Philippines**

JAPAN INTERNATIONAL COOPERATION AGENCY

**Figure 3.1.8**  
**Map showing the Geology of Mt. Pinatubo  
 and Surroundings Areas**

### Regional Geomorphologic Map



- |   |                                     |   |                                     |
|---|-------------------------------------|---|-------------------------------------|
|  | Zambales Ultramafic Highlands       |  | Mt. Pinatubo 1991 Pyroclastic Fans  |
|  | Pre-Pinatubo Volcanics (Highlands)  |  | 1991 Eruption-Related Lahar Avenues |
|  | Mt. Pinatubo Complex                |  | Lahar Dammed Lakes                  |
|  | 1991 Pinatubo Caldera / Crater Lake |  | Alluvial Fans/Plains                |

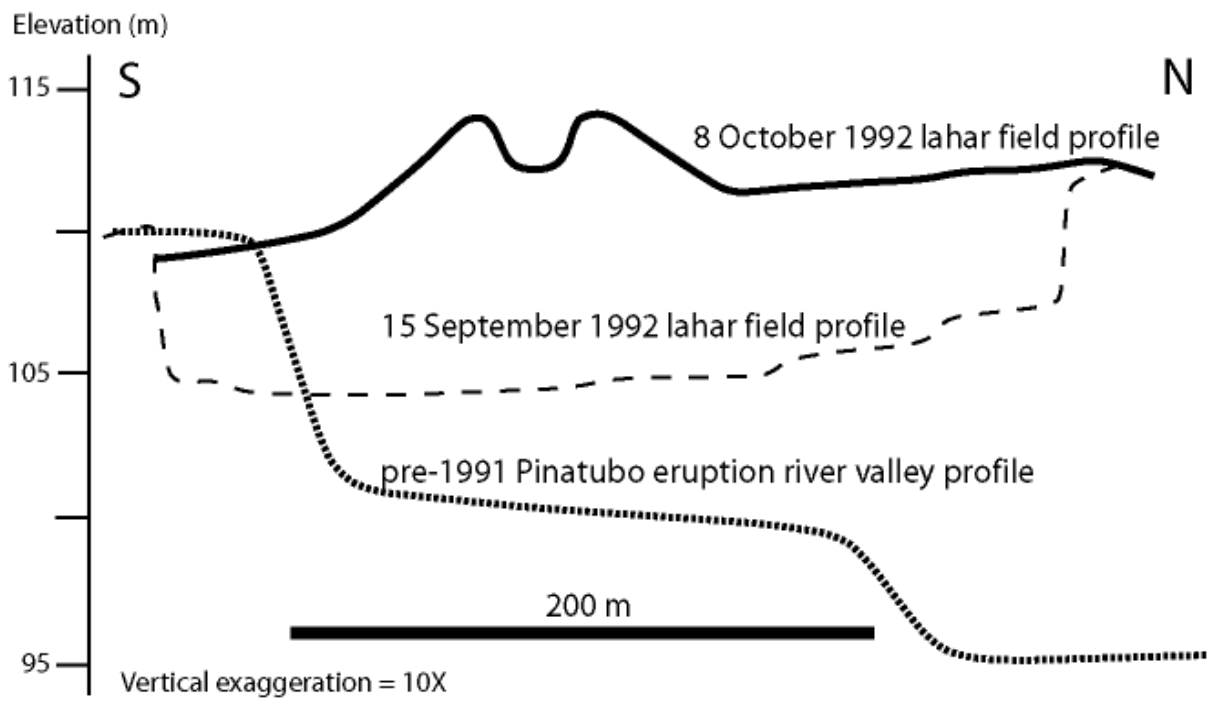
THE GOVERNMENT OF THE PHILIPPINES  
THE DEPARTMENT OF PUBLIC WORKS AND HIGHWAYS

**The Study on Sabo and Flood Control for  
Western River Basins of Mount Pinatubo in the  
Republic of the Philippines**

JAPAN INTERNATIONAL COOPERATION AGENCY

**Figure 3.1.9**

**Map Showing the Principal Morphologic  
Units around Mt. Pinatubo**



THE GOVERNMENT OF THE PHILIPPINES  
 THE DEPARTMENT OF PUBLIC WORKS AND HIGHWAYS

**The Study on Sabo and Flood Control for  
 Western River Basins of Mount Pinatubo in the  
 Republic of the Philippines**

*JAPAN INTERNATIONAL COOPERATION AGENCY*

**Figure 3.1.10**  
**Comparison of Pre- and Post- Lahar Cross-  
 Sectional Profiles along the Southern Margin  
 of the Sto. Tomas Lahar Field**



THE GOVERNMENT OF THE PHILIPPINES  
THE DEPARTMENT OF PUBLIC WORKS AND HIGHWAYS

**The Study on Sabo and Flood Control for  
Western River Basins of Mount Pinatubo in the  
Republic of the Philippines**

*JAPAN INTERNATIONAL COOPERATION AGENCY*

**Figure 3.1.11**

**Photo Shows Poorly Sorted, Sand Rich Lahar  
Deposits Located near the Confluence of the  
Maraunot Notch and the Balin Baquero River**





THE GOVERNMENT OF THE PHILIPPINES  
THE DEPARTMENT OF PUBLIC WORKS AND HIGHWAYS

**The Study on Sabo and Flood Control for  
Western River Basins of Mount Pinatubo in the  
Republic of the Philippines**

*JAPAN INTERNATIONAL COOPERATION AGENCY*

**Figure 3.1.12**  
**Photo Shows a Large Clast, Several Meters in  
Diameter, Jutting out of a Thick Lahar  
Deposit Located near the Confluence of  
Maraunot and Balin-Baquero, Zambales**



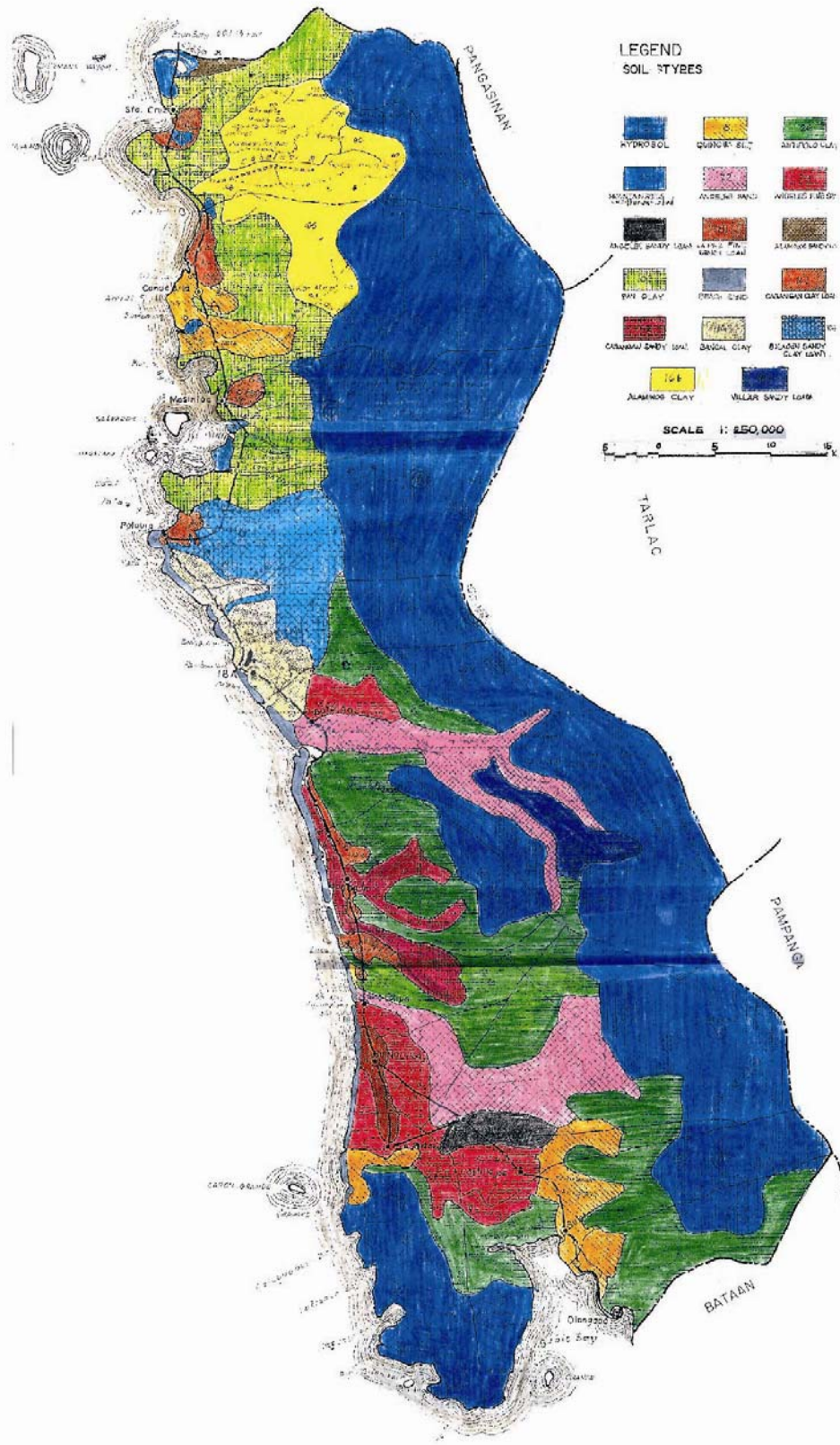
THE GOVERNMENT OF THE PHILIPPINES  
THE DEPARTMENT OF PUBLIC WORKS AND HIGHWAYS

**The Study on Sabo and Flood Control for  
Western River Basins of Mount Pinatubo in the  
Republic of the Philippines**

*JAPAN INTERNATIONAL COOPERATION AGENCY*

**Figure 3.1.13**

**Photo Shows a Thick Lahar Deposit with  
Crude Internal Stratifications**



THE GOVERNMENT OF THE PHILIPPINES  
THE DEPARTMENT OF PUBLIC WORKS AND HIGHWAYS

**The Study on Sabo and Flood Control for  
Western River Basins of Mount Pinatubo in the  
Republic of the Philippines**

JAPAN INTERNATIONAL COOPERATION AGENCY

**Figure 3.1.14**

**Soil Map**