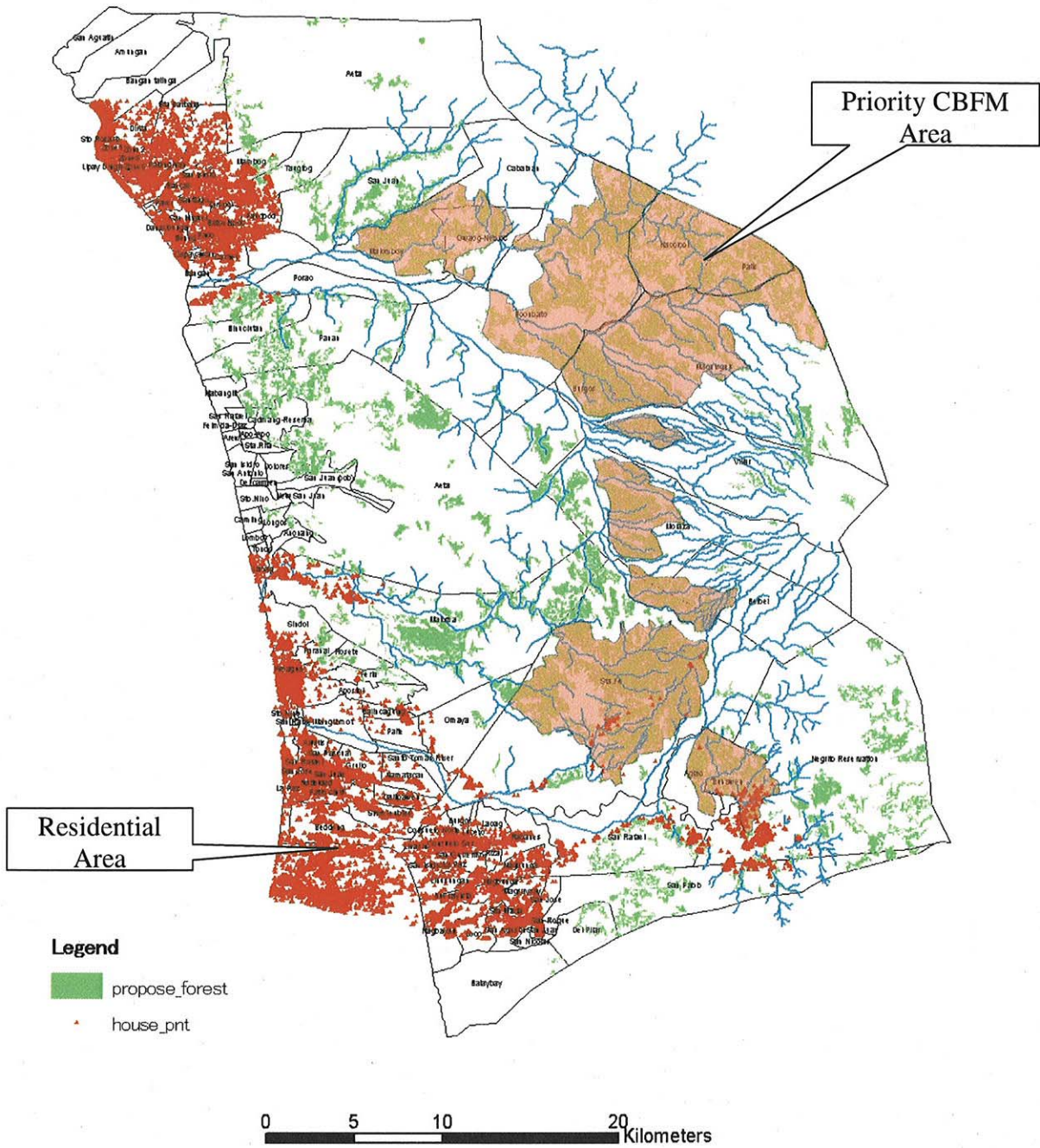


THE GOVERNMENT OF THE PHILIPPINES
 THE DEPARTMENT OF PUBLIC WORKS AND HIGHWAYS

**The Study on Sabo and Flood Control for
 Western River Basins of Mount Pinatubo in the
 Republic of the Philippines**

JAPAN INTERNATIONAL COOPERATION AGENCY

Figure 3.2.2
Potential CBFM Area

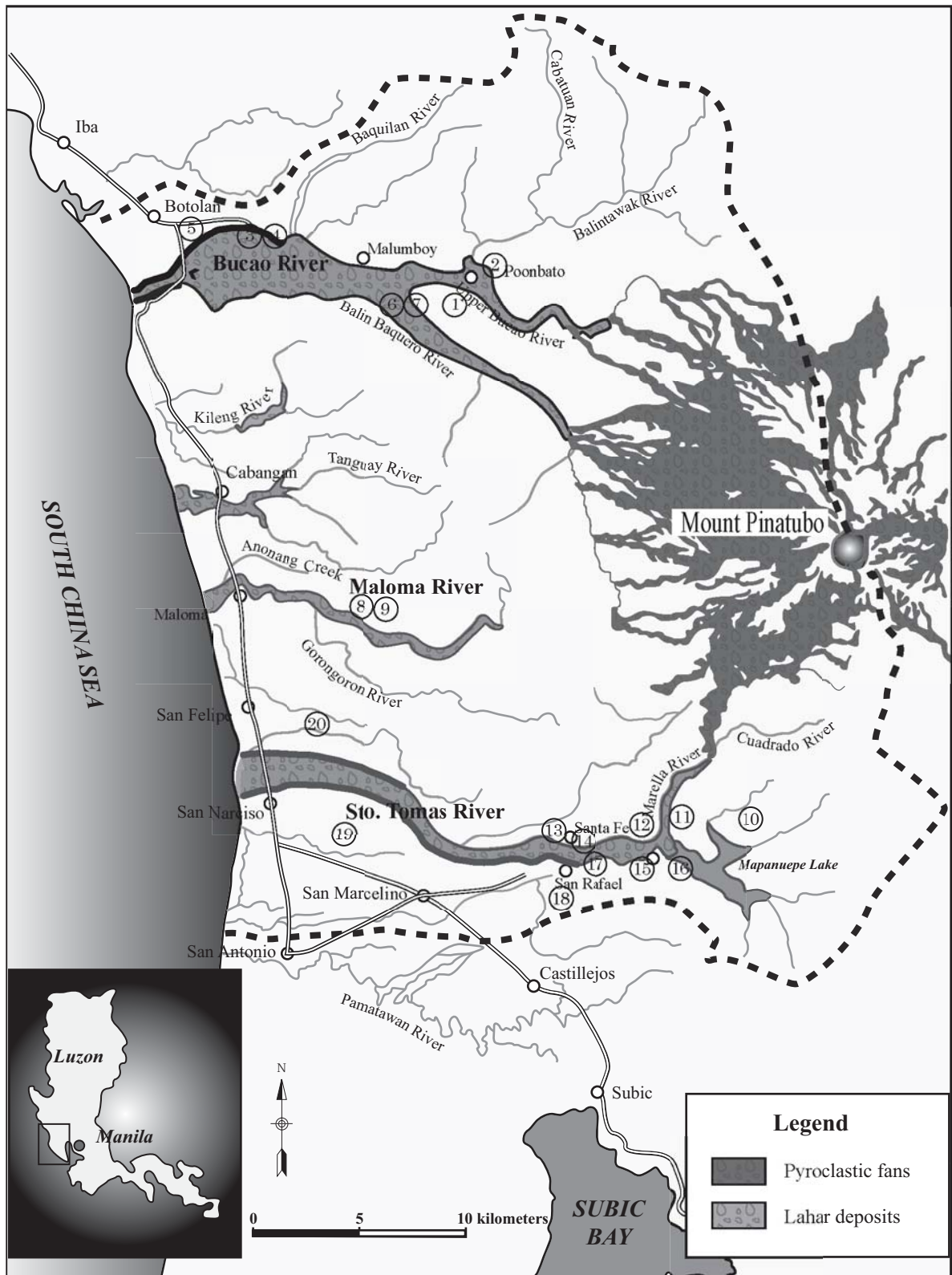


THE GOVERNMENT OF THE PHILIPPINES
 THE DEPARTMENT OF PUBLIC WORKS AND HIGHWAYS

**The Study on Sabo and Flood Control for
 Western River Basins of Mount Pinatubo in the
 Republic of the Philippines**

JAPAN INTERNATIONAL COOPERATION AGENCY

Figure 3.2.3
Priority CBFM Development Area

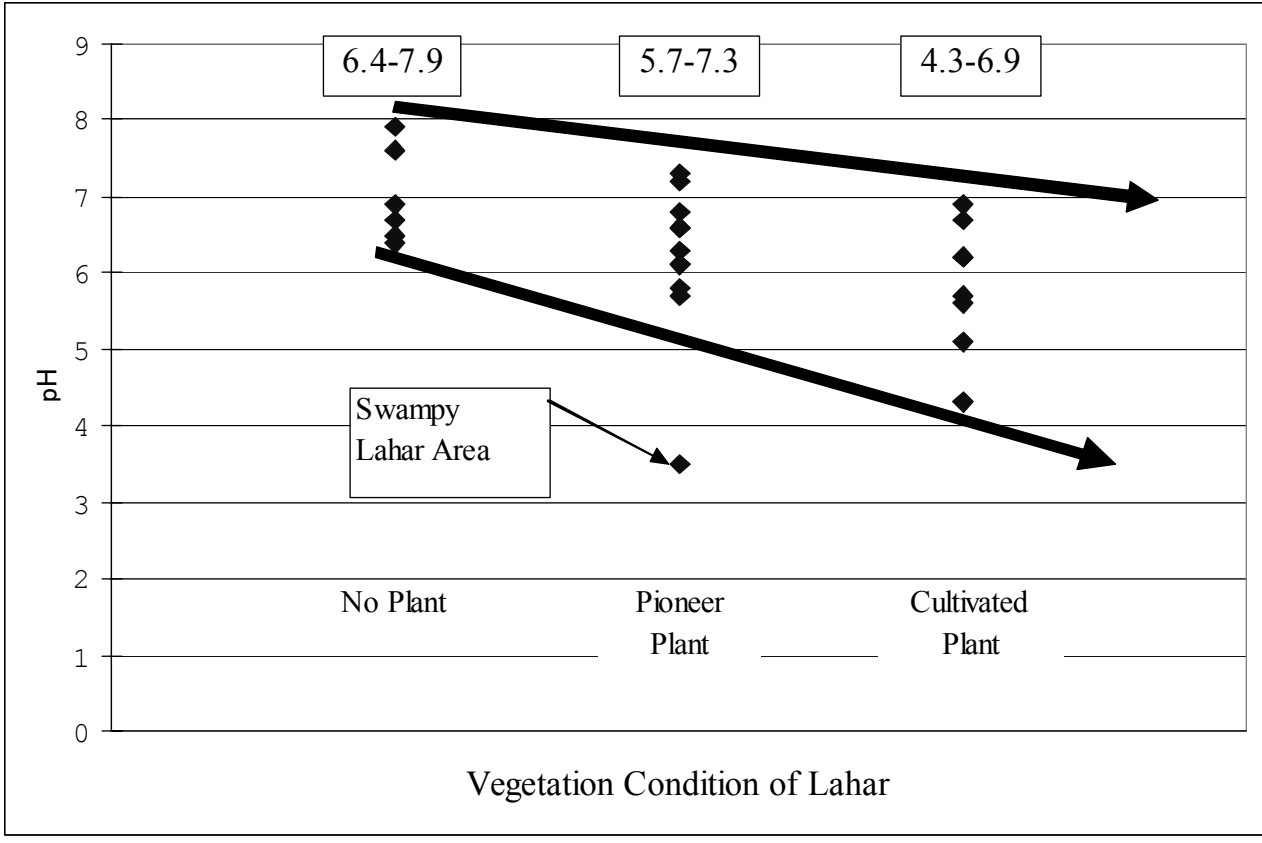


THE GOVERNMENT OF THE PHILIPPINES
 THE DEPARTMENT OF PUBLIC WORKS AND HIGHWAYS

**The Study on Sabo and Flood Control for
 Western River Basins of Mount Pinatubo in
 the Republic of the Philippines**

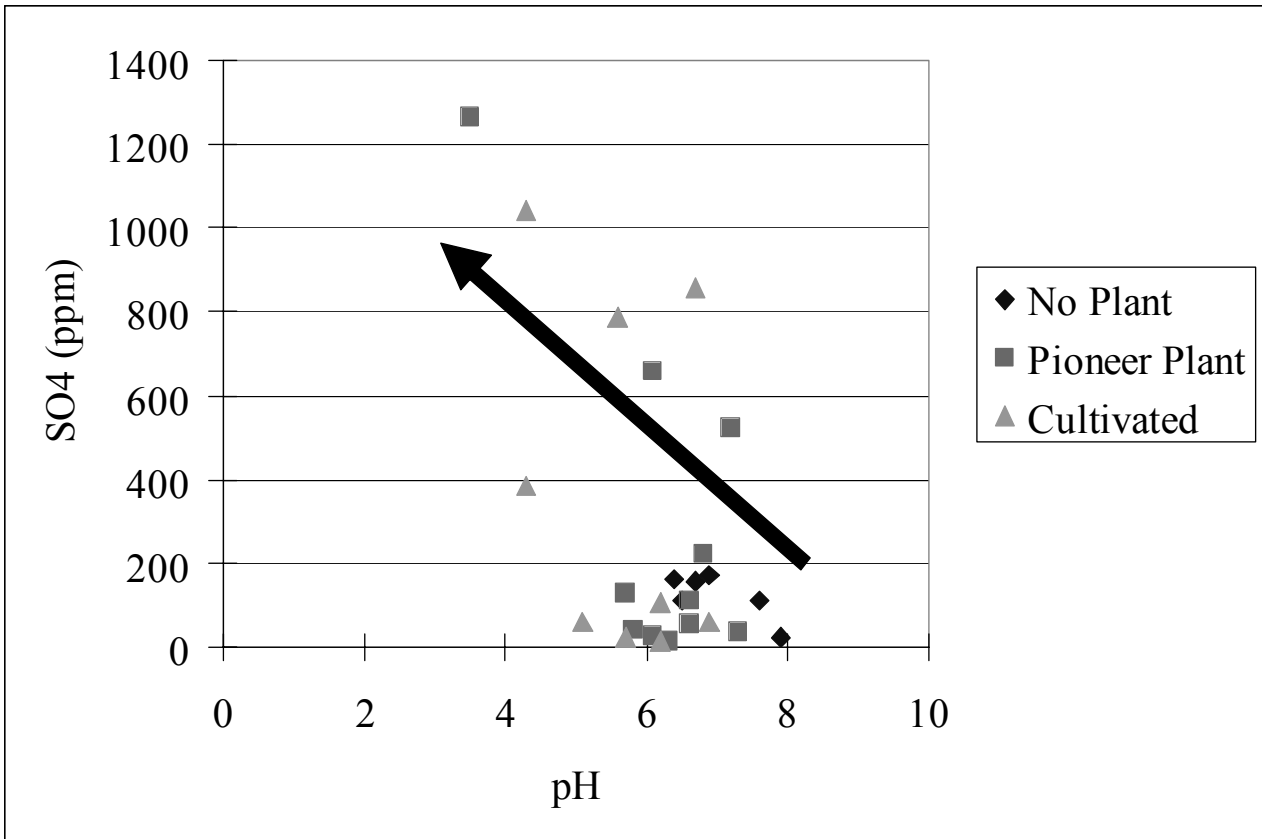
JAPAN INTERNATIONAL COOPERATION AGENCY

Figure 3.3.1
Location Map for Soil Samples



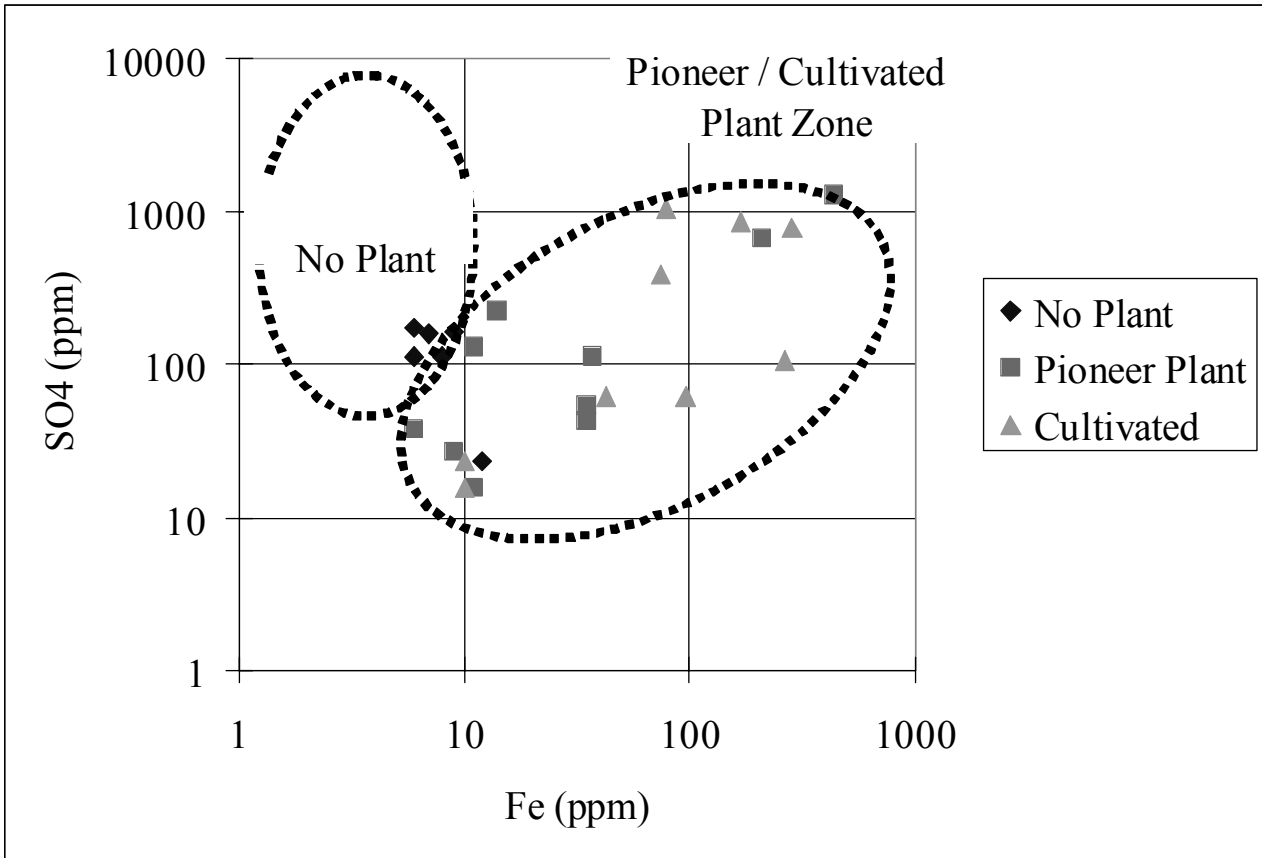
THE GOVERNMENT OF THE PHILIPPINES
 THE DEPARTMENT OF PUBLIC WORKS AND HIGHWAYS
**The Study on Sabo and Flood Control for
 Western River Basins of Mount Pinatubo in the
 Republic of the Philippines**
 JAPAN INTERNATIONAL COOPERATION AGENCY

Figure 3.3.2
**Co-relation between Vegetation Condition
 of Lahar and pH**



THE GOVERNMENT OF THE PHILIPPINES
 THE DEPARTMENT OF PUBLIC WORKS AND HIGHWAYS
**The Study on Sabo and Flood Control for
 Western River Basins of Mount Pinatubo in the
 Republic of the Philippines**
 JAPAN INTERNATIONAL COOPERATION AGENCY

Figure 3.3.3
**Co-relation between pH and Sulfate (SO4)
 Concentration**



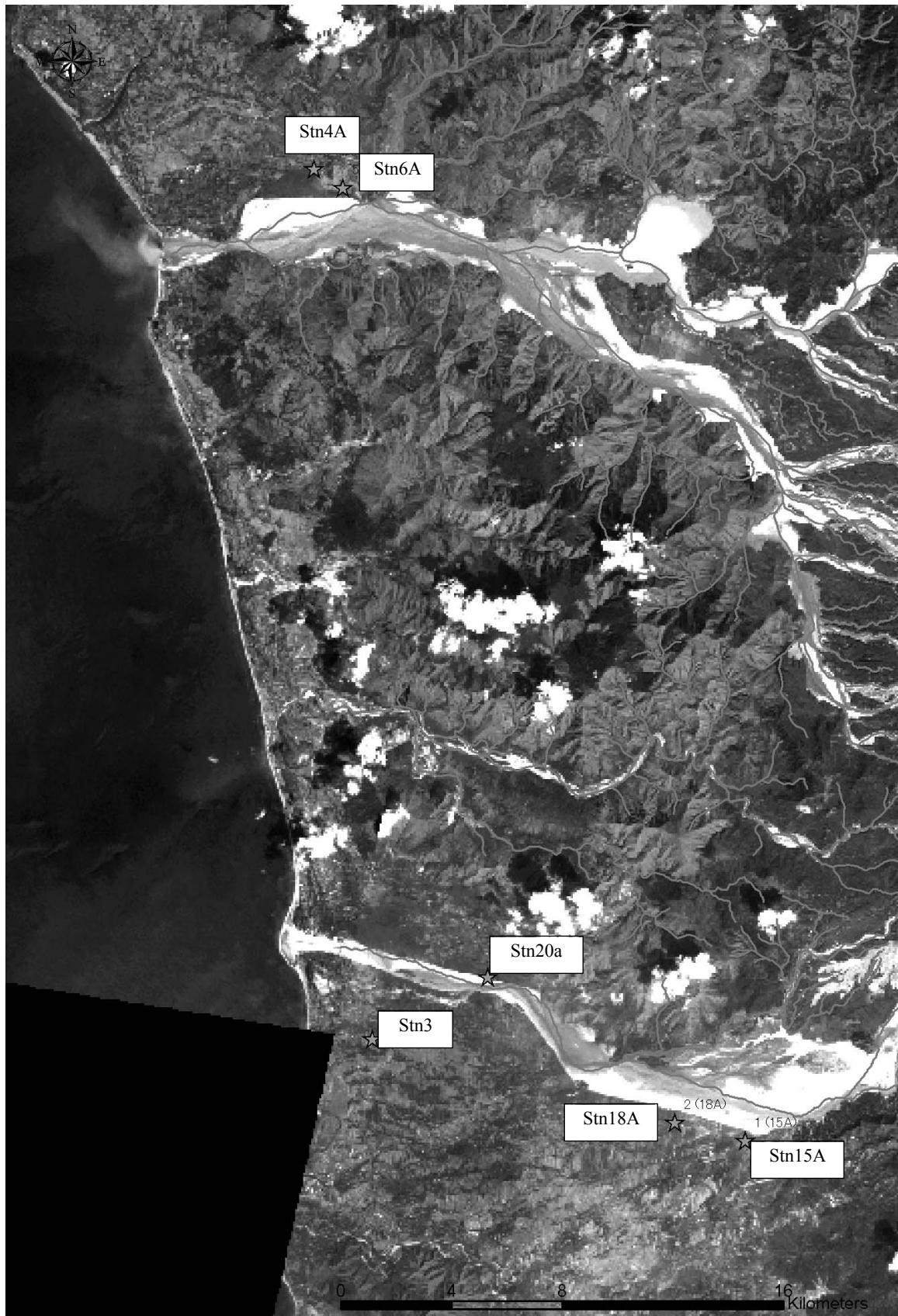
THE GOVERNMENT OF THE PHILIPPINES
THE DEPARTMENT OF PUBLIC WORKS AND HIGHWAYS

**The Study on Sabo and Flood Control for
Western River Basins of Mount Pinatubo in the
Republic of the Philippines**

JAPAN INTERNATIONAL COOPERATION AGENCY

Figure 3.3.4

Co-relation between Iron (Fe) and Sulfate (SO4) Concentration



THE GOVERNMENT OF THE PHILIPPINES
 THE DEPARTMENT OF PUBLIC WORKS AND HIGHWAYS
**The Study on Sabo and Flood Control for
 Western River Basins of Mount Pinatubo in the
 Republic of the Philippines**
 JAPAN INTERNATIONAL COOPERATION AGENCY

Figure 3.3.5
**Location of Sampling Point of
 Groundwater for Laboratory Test**