



THE GOVERNMENT OF THE PHILIPPINES
THE DEPARTMENT OF PUBLIC WORKS AND HIGHWAYS

**The Study on Sabo and Flood Control for
Western River Basins of Mount Pinatubo in
the Republic of the Philippines**

JAPAN INTERNATIONAL COOPERATION AGENCY

Figure 3.5.2 (2/5)

**Area for Nomination of Evacuation Center
(Maloma River Basin)**



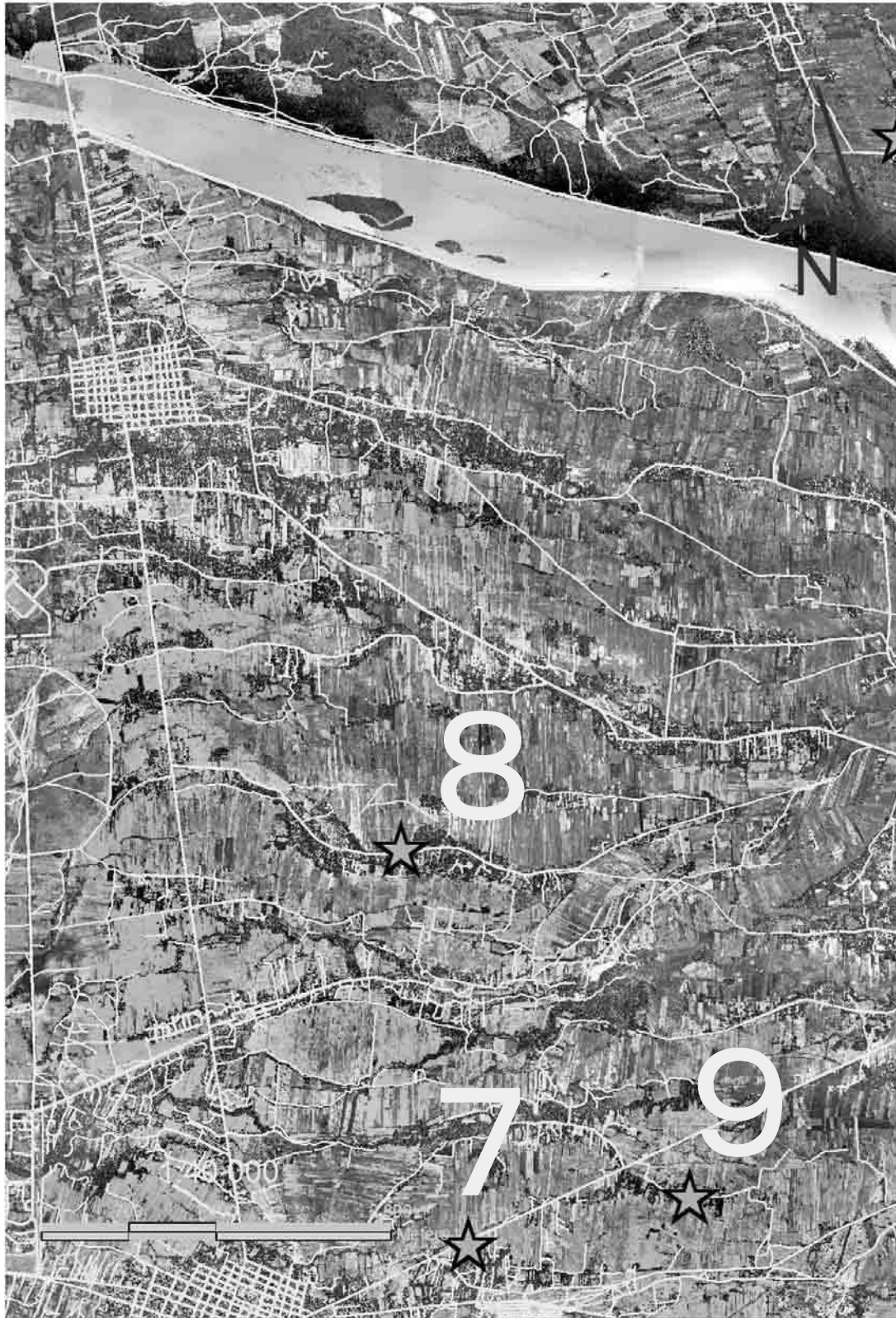
THE GOVERNMENT OF THE PHILIPPINES
 THE DEPARTMENT OF PUBLIC WORKS AND HIGHWAYS

**The Study on Sabo and Flood Control for
 Western River Basins of Mount Pinatubo in
 the Republic of the Philippines**

JAPAN INTERNATIONAL COOPERATION AGENCY

Figure 3.5.2 (3/5)

**Area for Nomination of Evacuation Center
 (Right Side of Sto. Tomas River Basin)**



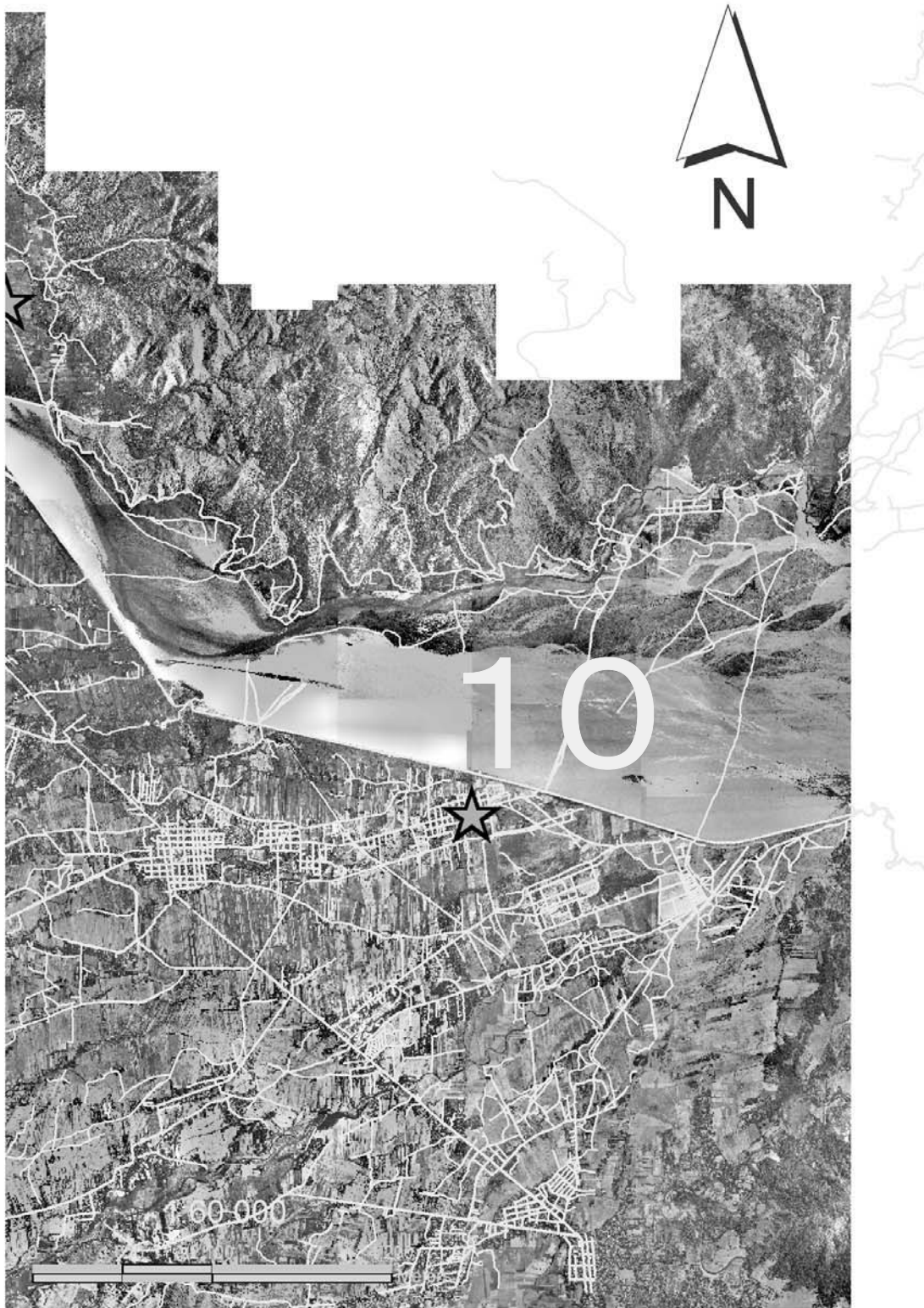
THE GOVERNMENT OF THE PHILIPPINES
THE DEPARTMENT OF PUBLIC WORKS AND HIGHWAYS

**The Study on Sabo and Flood Control for
Western River Basins of Mount Pinatubo in
the Republic of the Philippines**

JAPAN INTERNATIONAL COOPERATION AGENCY

Figure 3.5.2 (4/5)

**Area for Nomination of Evacuation Center
(Left Side of Sto. Tomas River Basin 1/2)**



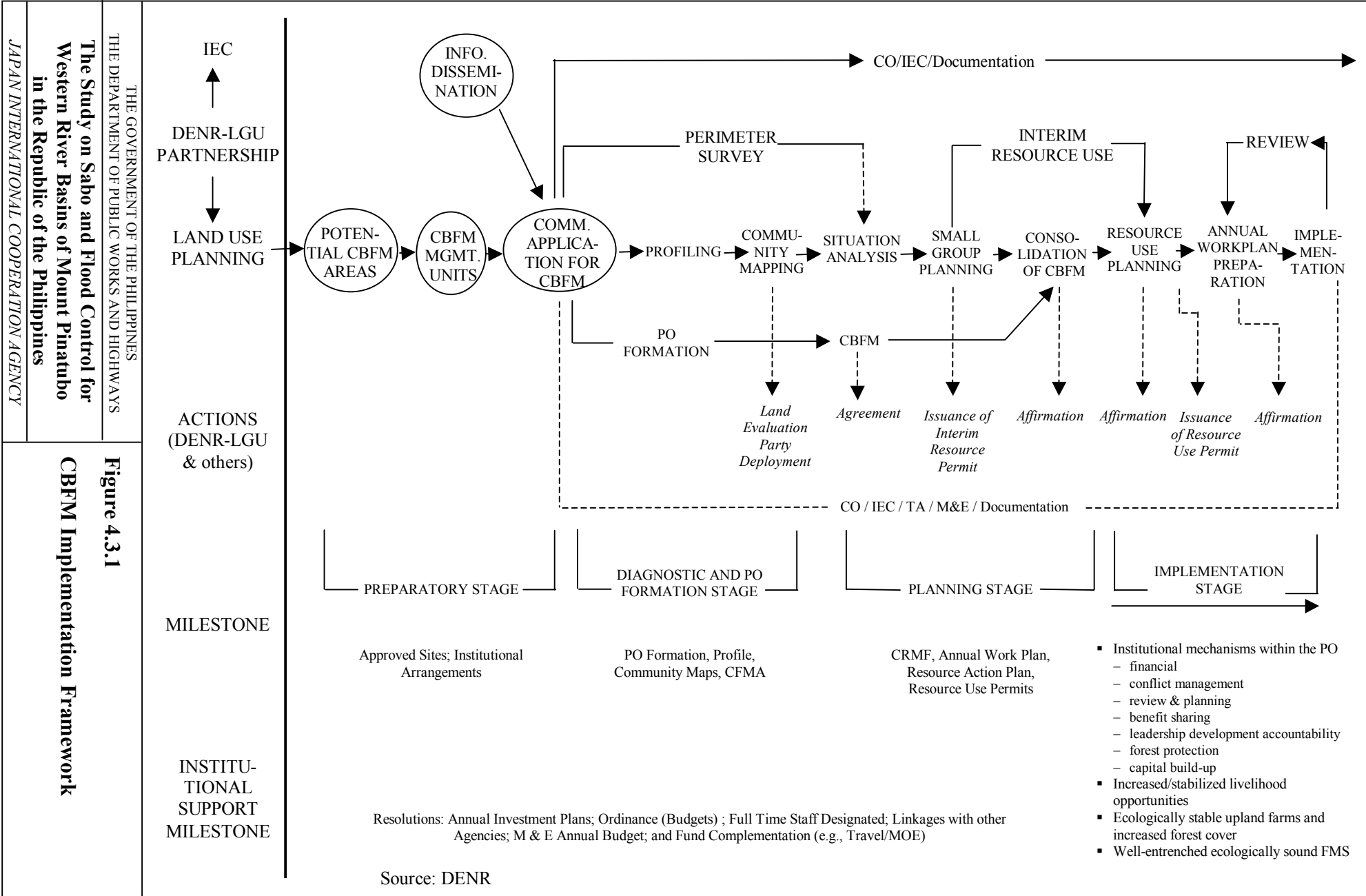
THE GOVERNMENT OF THE PHILIPPINES
THE DEPARTMENT OF PUBLIC WORKS AND HIGHWAYS

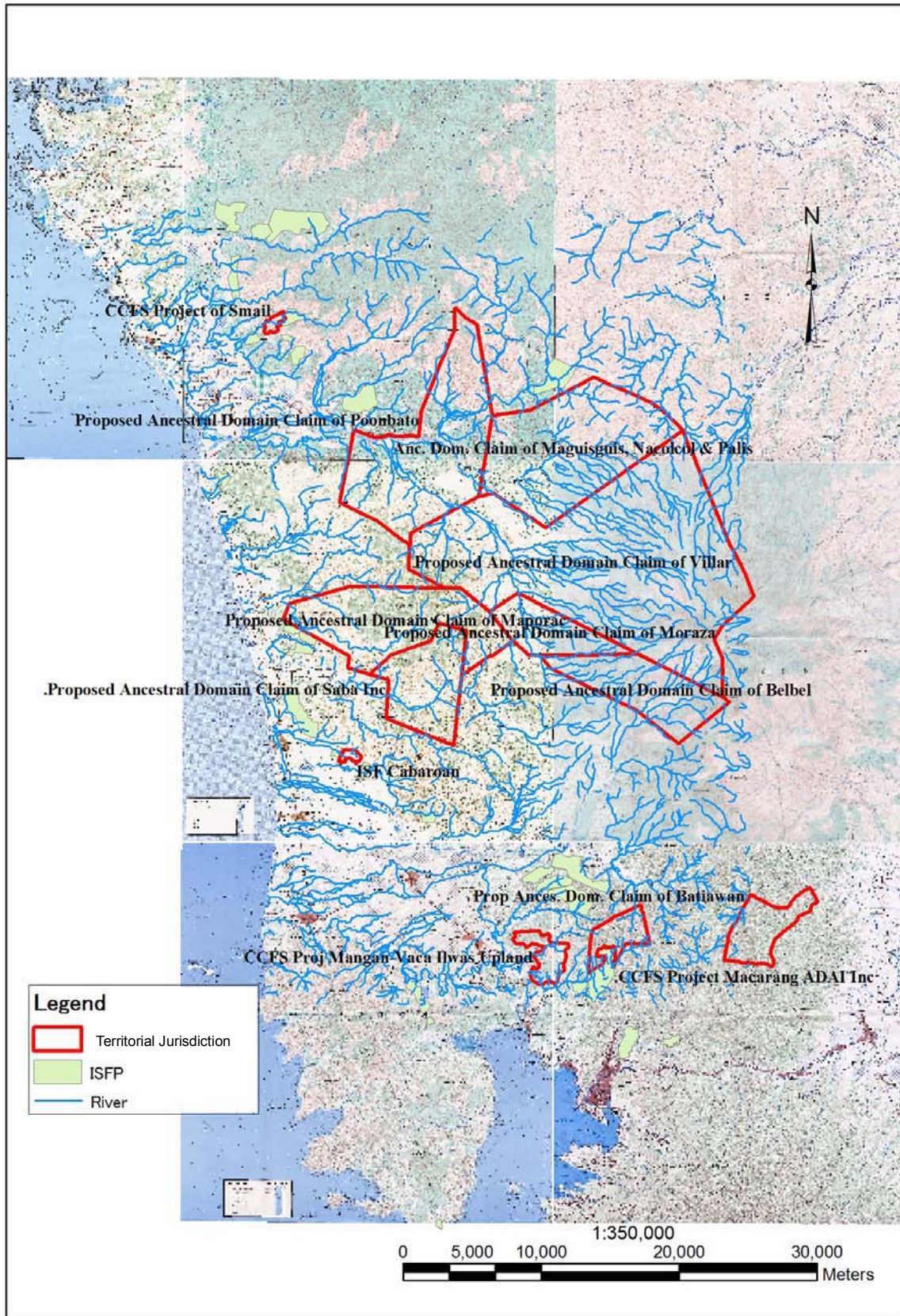
**The Study on Sabo and Flood Control for
Western River Basins of Mount Pinatubo in
the Republic of the Philippines**

JAPAN INTERNATIONAL COOPERATION AGENCY

Figure 3.5.2 (5/5)

**Area for Nomination of Evacuation Center
(Left Side of Sto. Tomas River Basin 2/2)**





THE GOVERNMENT OF THE PHILIPPINES
THE DEPARTMENT OF PUBLIC WORKS AND HIGHWAYS

**The Study on Sabo and Flood Control for
Western River Basins of Mount Pinatubo in
the Republic of the Philippines**

JAPAN INTERNATIONAL COOPERATION AGENCY

Figure 4.3.2

**Territorial Jurisdiction of Proposed Ancestral
Domain Claim**

As of 07 May 2002



As of 29 August 2002



As of 17 September 2002



THE GOVERNMENT OF THE PHILIPPINES
THE DEPARTMENT OF PUBLIC WORKS AND HIGHWAYS
**The Study on Sabo and Flood Control for
Western River Basins of Mount Pinatubo in the
Republic of the Philippines**
JAPAN INTERNATIONAL COOPERATION AGENCY

Figure 4.6.1

**Progress of Collapse at Spillway Portion of Dizon
Mines Tailing Dam**

Before Lake Formation
July 1991



After Lake Formation
Nov 1991



Source: "Fire and Mud"

THE GOVERNMENT OF THE PHILIPPINES
THE DEPARTMENT OF PUBLIC WORKS AND HIGHWAYS

**The Study on Sabo and Flood Control for
Western River Basins of Mount Pinatubo in the
Republic of the Philippines**

JAPAN INTERNATIONAL COOPERATION AGENCY

Figure 4.6.2

Before and After Formation of Mapanuepe Lake