



THE GOVERNMENT OF THE PHILIPPINES  
 THE DEPARTMENT OF PUBLIC WORKS AND HIGHWAYS

**The Study on Sabo and Flood Control for  
 Western River Basins of Mount Pinatubo in  
 the Republic of the Philippines**

*JAPAN INTERNATIONAL COOPERATION AGENCY*

**Figure 3.5.1 (1/10)**

**Area for Nomination of Evacuation Center  
 (Bucao River Basin No.1)**



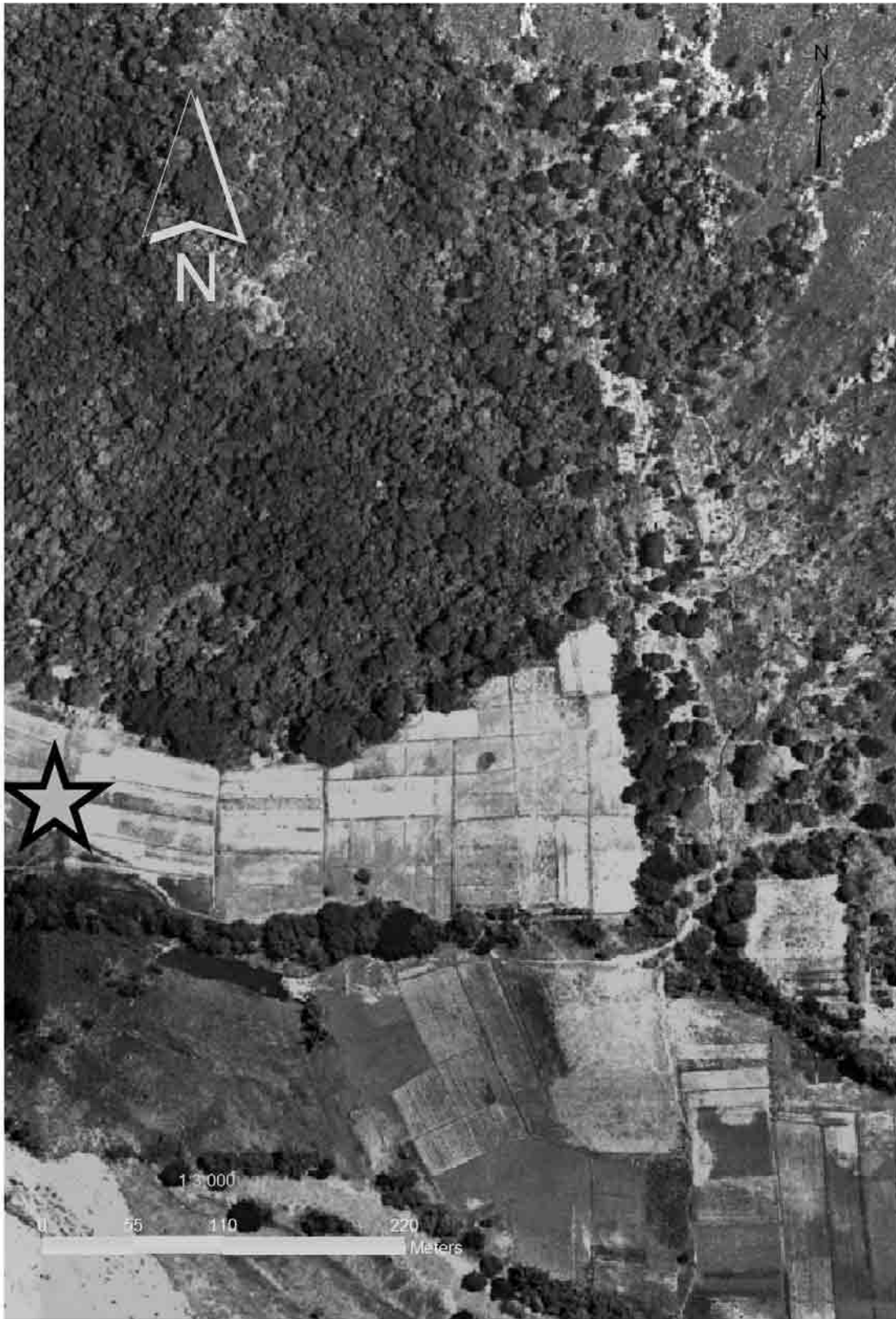
THE GOVERNMENT OF THE PHILIPPINES  
 THE DEPARTMENT OF PUBLIC WORKS AND HIGHWAYS

**The Study on Sabo and Flood Control for  
 Western River Basins of Mount Pinatubo in  
 the Republic of the Philippines**

*JAPAN INTERNATIONAL COOPERATION AGENCY*

**Figure 3.5.1 (2/10)**

**Area for Nomination of Evacuation Center  
 (Bucayo River Basin No.2)**



THE GOVERNMENT OF THE PHILIPPINES  
 THE DEPARTMENT OF PUBLIC WORKS AND HIGHWAYS

**The Study on Sabo and Flood Control for  
 Western River Basins of Mount Pinatubo in  
 the Republic of the Philippines**

*JAPAN INTERNATIONAL COOPERATION AGENCY*

**Figure 3.5.1 (3/10)**  
**Area for Nomination of Evacuation Center**  
**(Maloma River Basin : No.3)**

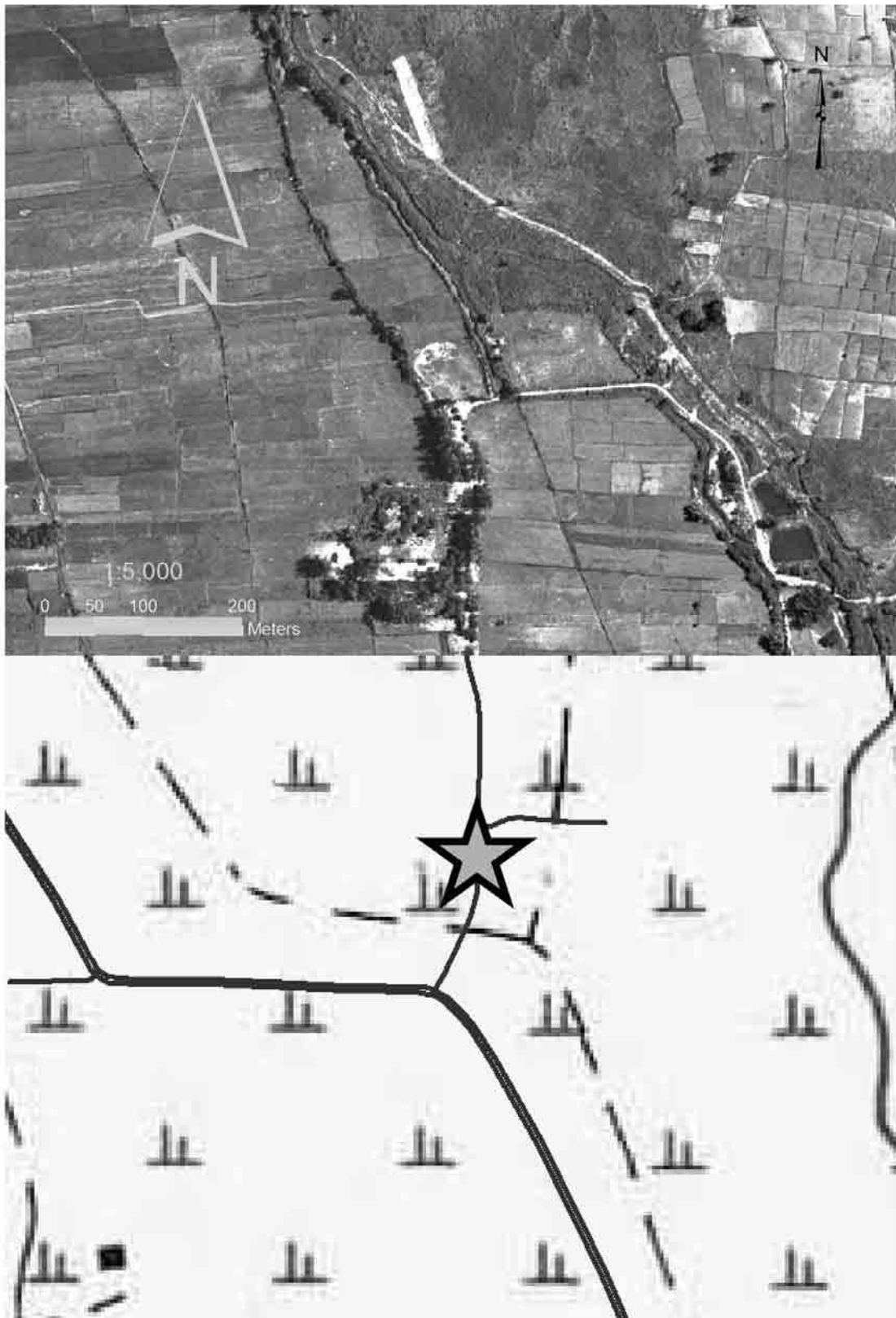


THE GOVERNMENT OF THE PHILIPPINES  
 THE DEPARTMENT OF PUBLIC WORKS AND HIGHWAYS

**The Study on Sabo and Flood Control for  
 Western River Basins of Mount Pinatubo in  
 the Republic of the Philippines**

*JAPAN INTERNATIONAL COOPERATION AGENCY*

**Figure 3.5.1 (4/10)**  
**Area for Nomination of Evacuation Center**  
**(Sto. Tomas River Basin : No.4)**

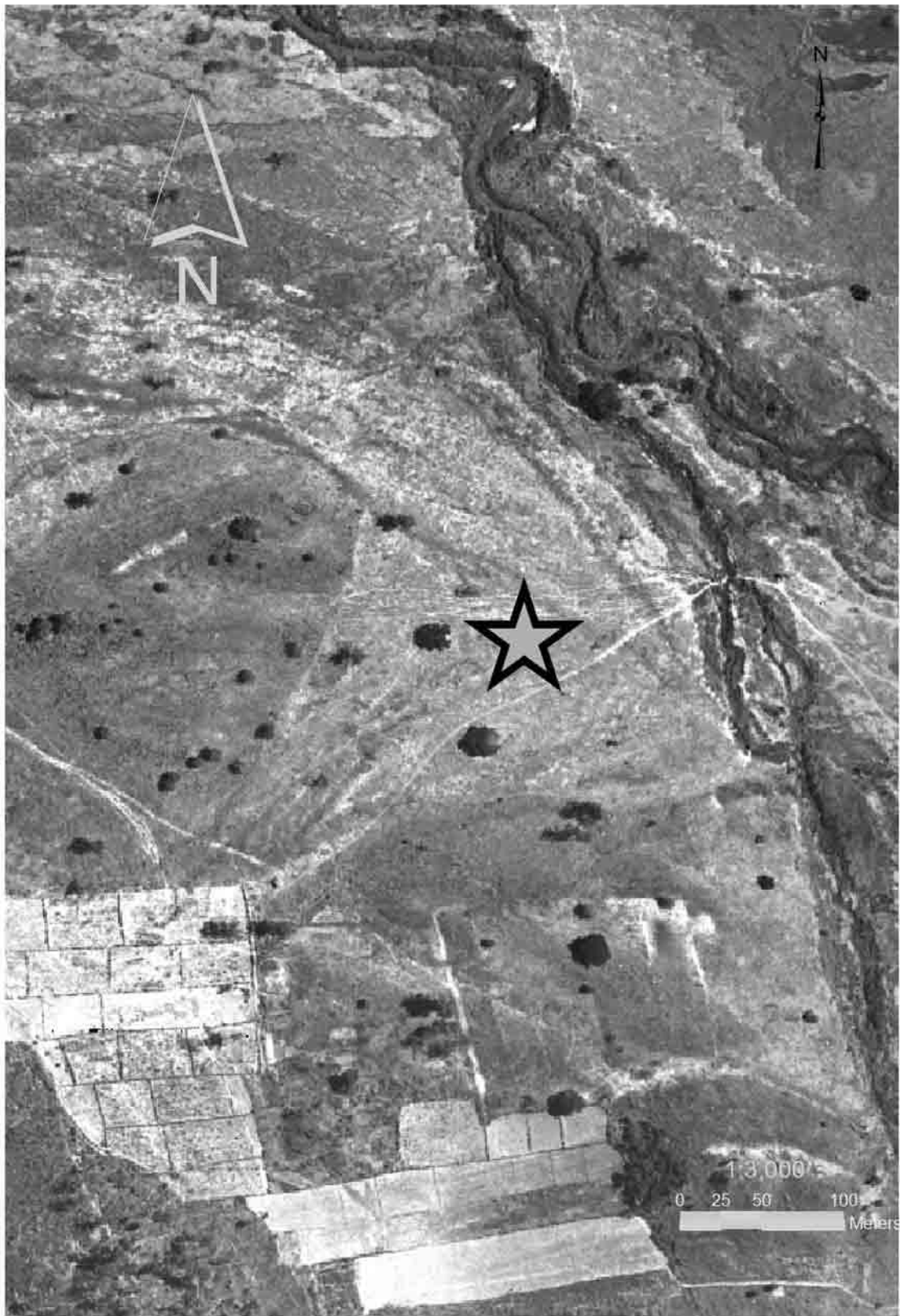


THE GOVERNMENT OF THE PHILIPPINES  
 THE DEPARTMENT OF PUBLIC WORKS AND HIGHWAYS

**The Study on Sabo and Flood Control for  
 Western River Basins of Mount Pinatubo in  
 the Republic of the Philippines**

*JAPAN INTERNATIONAL COOPERATION AGENCY*

**Figure 3.5.1 (5/10)**  
**Area for Nomination of Evacuation Center**  
**(Sto. Tomas River Basin : No.5)**



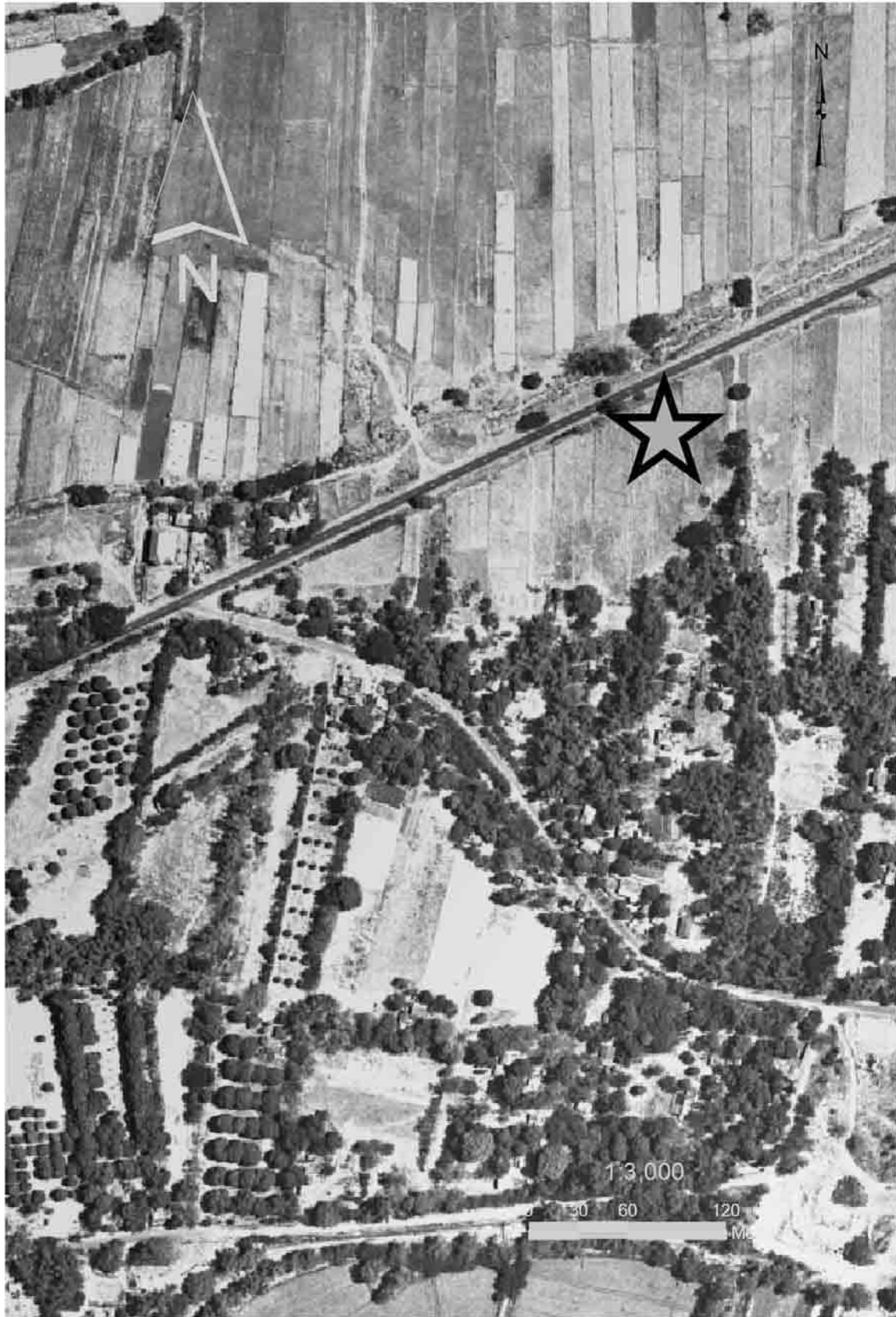
THE GOVERNMENT OF THE PHILIPPINES  
 THE DEPARTMENT OF PUBLIC WORKS AND HIGHWAYS

**The Study on Sabo and Flood Control for  
 Western River Basins of Mount Pinatubo in  
 the Republic of the Philippines**

*JAPAN INTERNATIONAL COOPERATION AGENCY*

**Figure 3.5.1 (6/10)**

**Area for Nomination of Evacuation Center  
 (Sto. Tomas River Basin : No.6)**



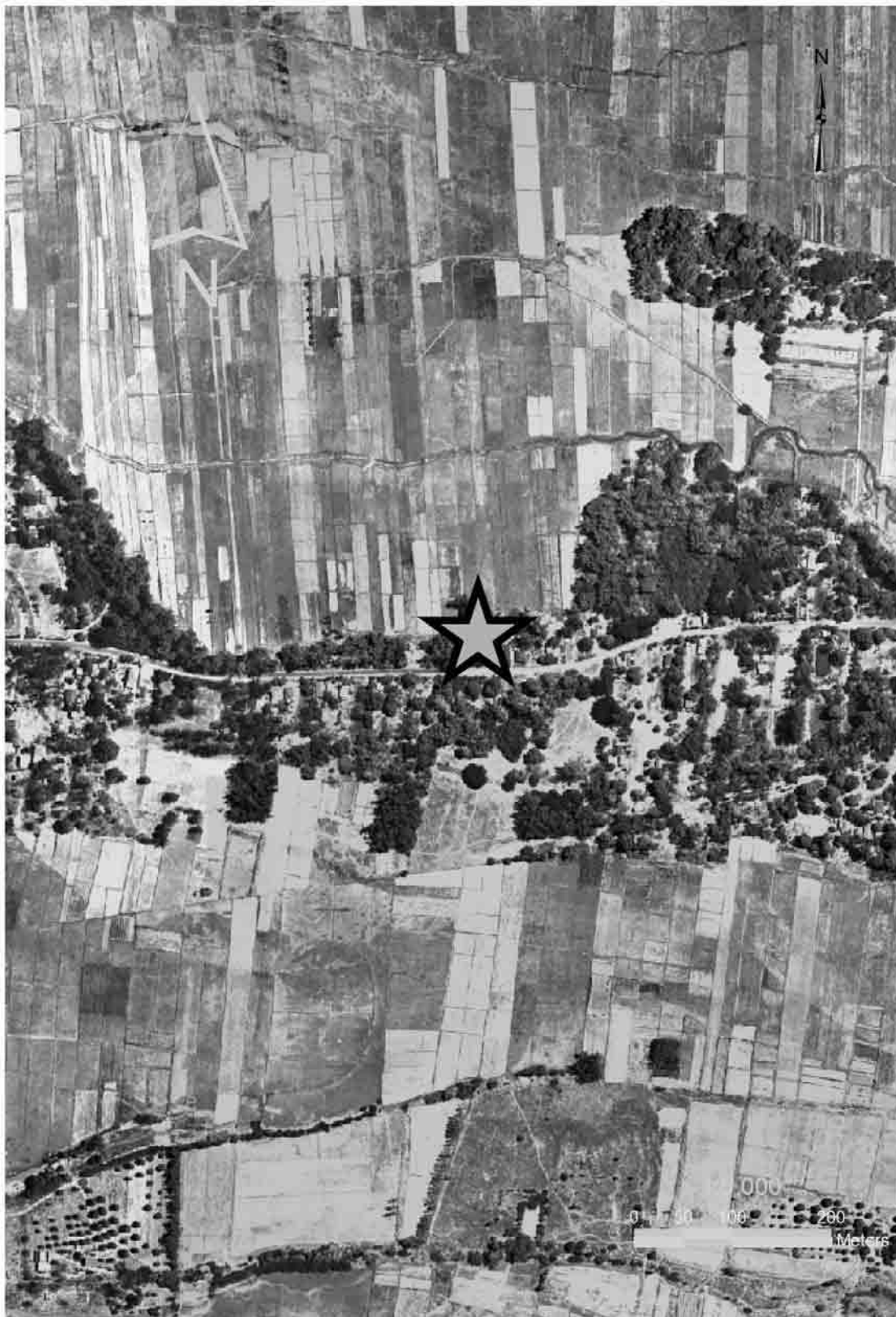
THE GOVERNMENT OF THE PHILIPPINES  
 THE DEPARTMENT OF PUBLIC WORKS AND HIGHWAYS

**The Study on Sabo and Flood Control for  
 Western River Basins of Mount Pinatubo in  
 the Republic of the Philippines**

*JAPAN INTERNATIONAL COOPERATION AGENCY*

**Figure 3.5.1 (7/10)**

**Area for Nomination of Evacuation Center  
 (Sto. Tomas River Basin : No.7)**



THE GOVERNMENT OF THE PHILIPPINES  
 THE DEPARTMENT OF PUBLIC WORKS AND HIGHWAYS

**The Study on Sabo and Flood Control for  
 Western River Basins of Mount Pinatubo in  
 the Republic of the Philippines**

*JAPAN INTERNATIONAL COOPERATION AGENCY*

**Figure 3.5.1 (8/10)**

**Area for Nomination of Evacuation Center  
 (Sto. Tomas River Basin : No.8)**





THE GOVERNMENT OF THE PHILIPPINES  
THE DEPARTMENT OF PUBLIC WORKS AND HIGHWAYS

**The Study on Sabo and Flood Control for  
Western River Basins of Mount Pinatubo in  
the Republic of the Philippines**

*JAPAN INTERNATIONAL COOPERATION AGENCY*

**Figure 3.5.1 (9/10)**

**Area for Nomination of Evacuation Center  
(Sto. Tomas River Basin : No.9)**



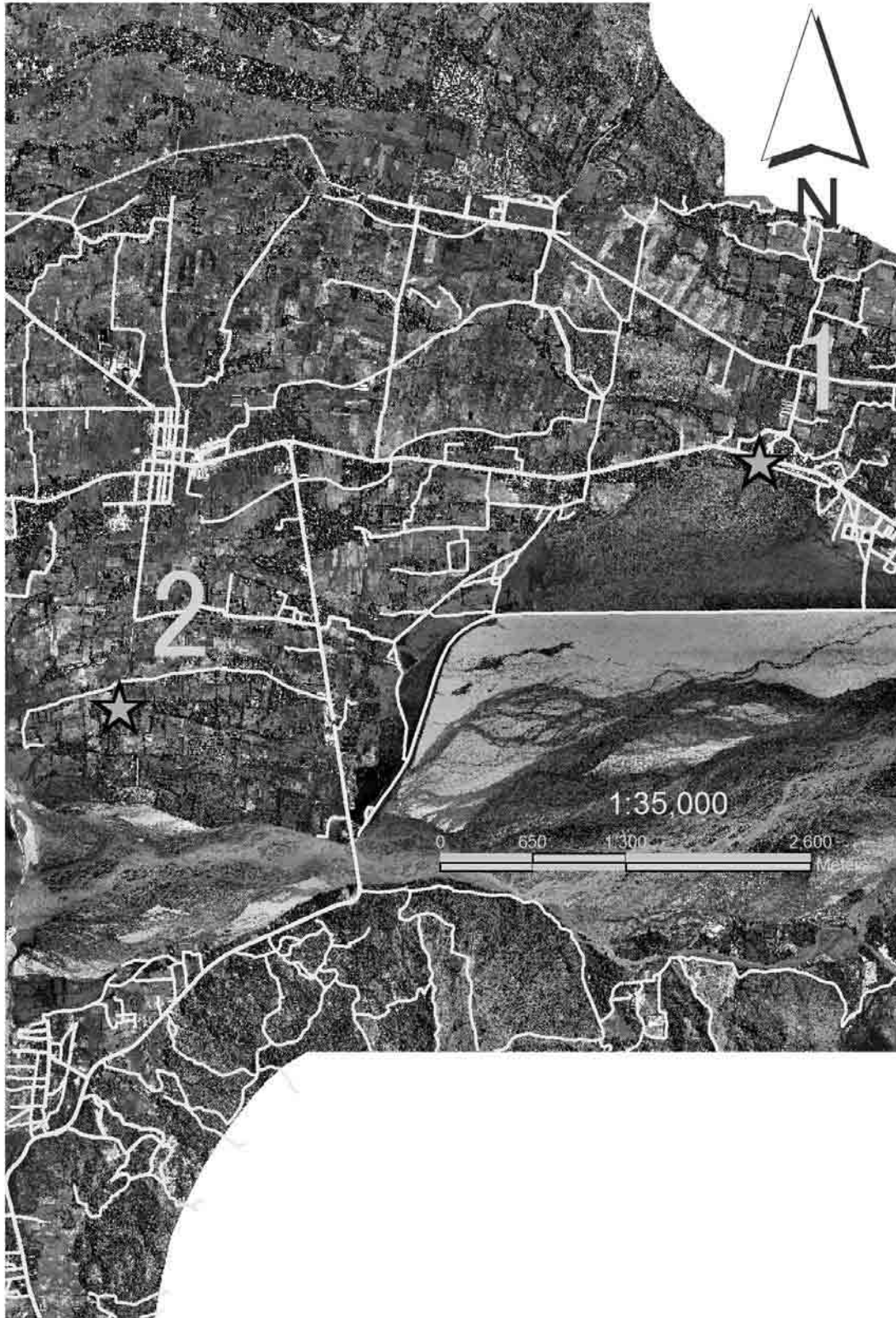
THE GOVERNMENT OF THE PHILIPPINES  
 THE DEPARTMENT OF PUBLIC WORKS AND HIGHWAYS

**The Study on Sabo and Flood Control for  
 Western River Basins of Mount Pinatubo in  
 the Republic of the Philippines**

*JAPAN INTERNATIONAL COOPERATION AGENCY*

**Figure 3.5.1 (10/10)**

**Area for Nomination of Evacuation Center  
 (Sto. Tomas River Basin : No.10)**



THE GOVERNMENT OF THE PHILIPPINES  
 THE DEPARTMENT OF PUBLIC WORKS AND HIGHWAYS

**The Study on Sabo and Flood Control for  
 Western River Basins of Mount Pinatubo in  
 the Republic of the Philippines**

*JAPAN INTERNATIONAL COOPERATION AGENCY*

**Figure 3.5.2 (1/5)**

**Area for Nomination of Evacuation Center  
 (Bucao River Basin)**