

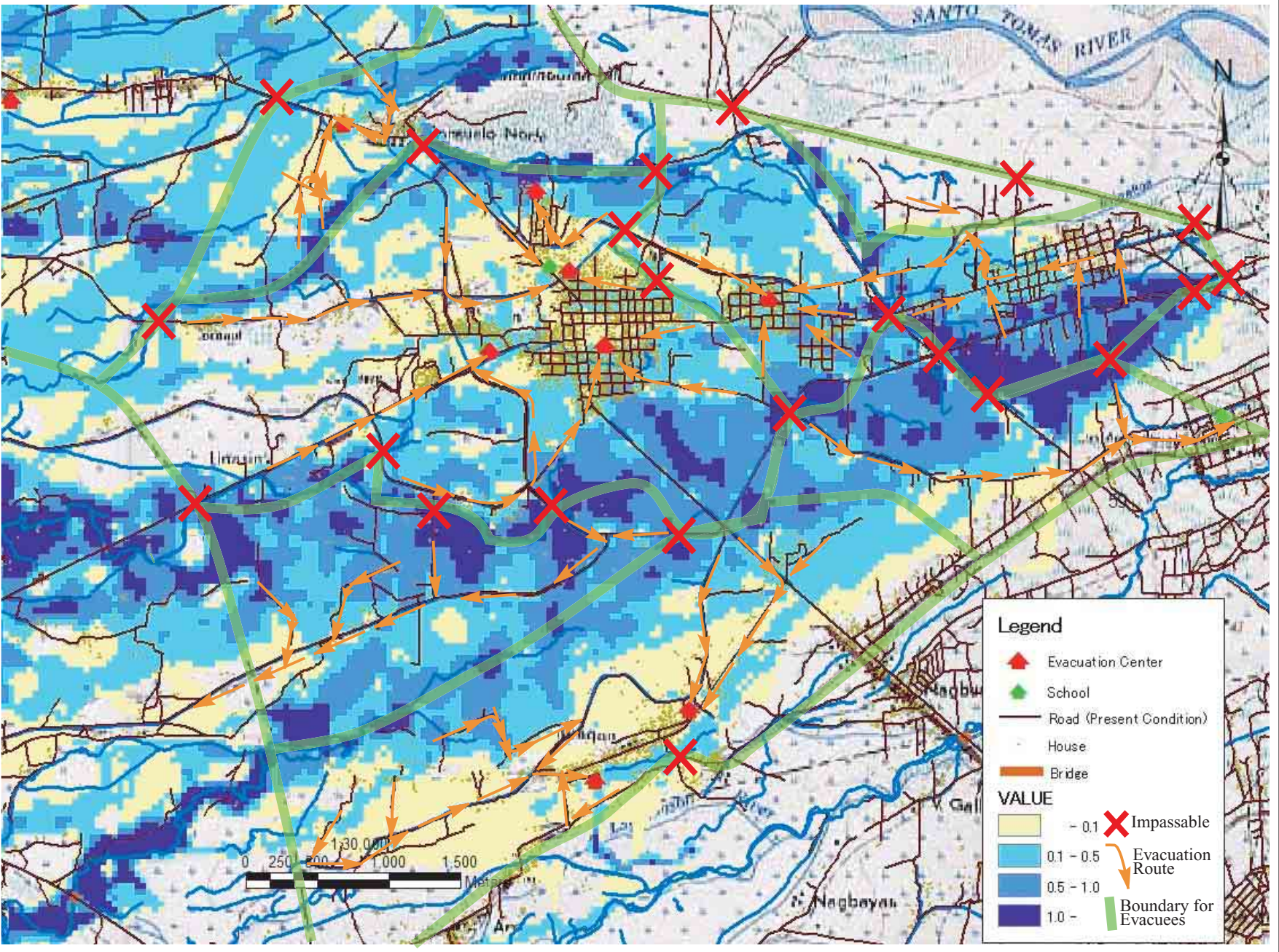
THE GOVERNMENT OF THE PHILIPPINES
THE DEPARTMENT OF PUBLIC WORKS AND HIGHWAYS

Figure 3.2.4 (4/5)

The Study on Sabo and Flood Control for
Western River Basins of Mount Pinatubo
in the Republic of the Philippines

Hazard Map
(Sto. Tomas River Basin : Left Side I, II)

JAPAN INTERNATIONAL COOPERATION AGENCY

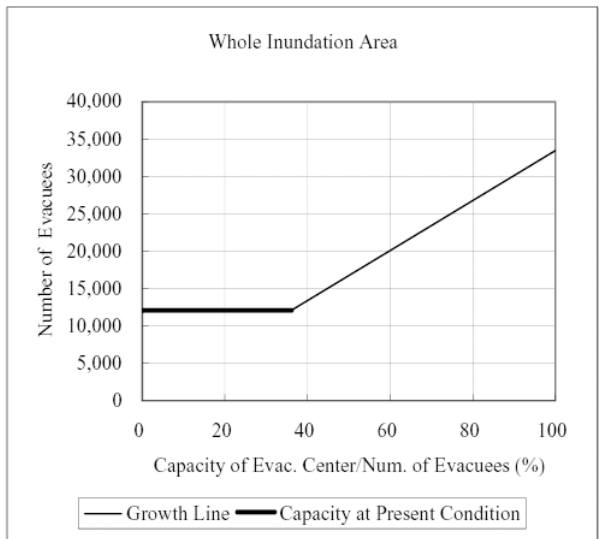
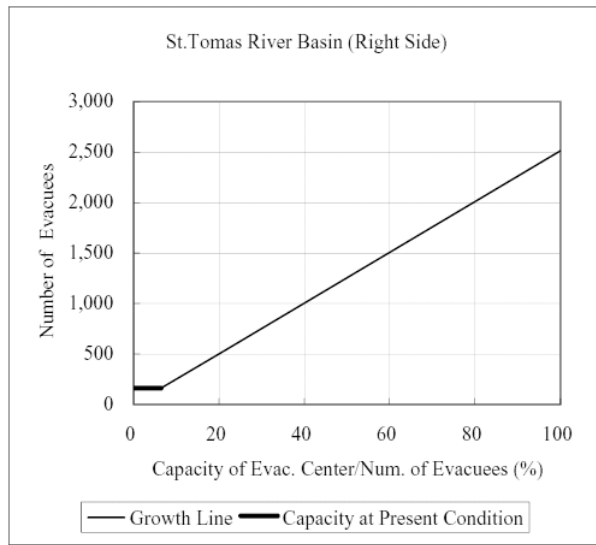
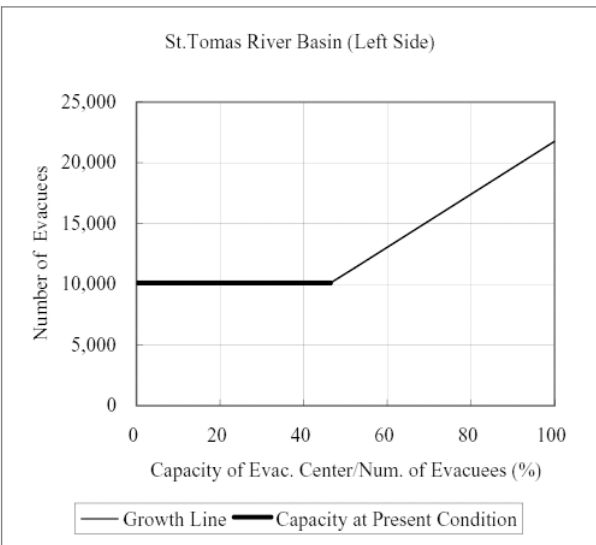
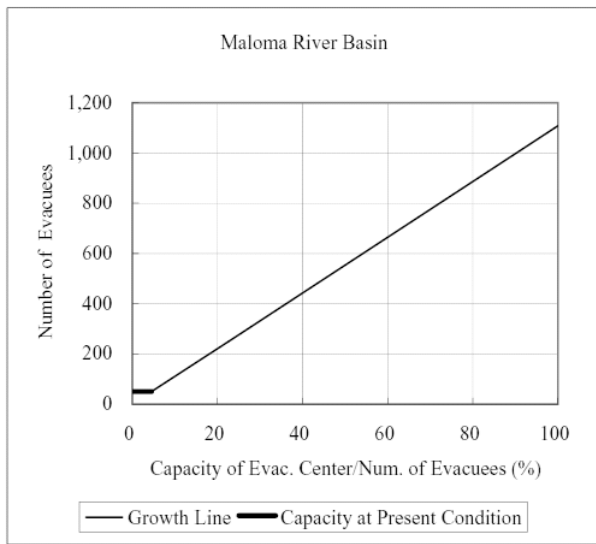
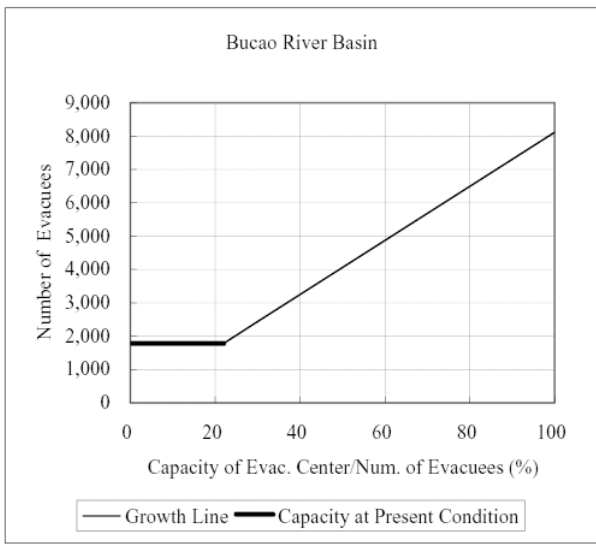


THE GOVERNMENT OF THE PHILIPPINES
THE DEPARTMENT OF PUBLIC WORKS AND HIGHWAYS

**The Study on Sabo and Flood Control for
Western River Basins of Mount Pinatubo
in the Republic of the Philippines**
JAPAN INTERNATIONAL COOPERATION AGENCY

Figure 3.2.4 (5/5)

**Hazard Map
(Sto. Tomas River Basin : Left Side III)**



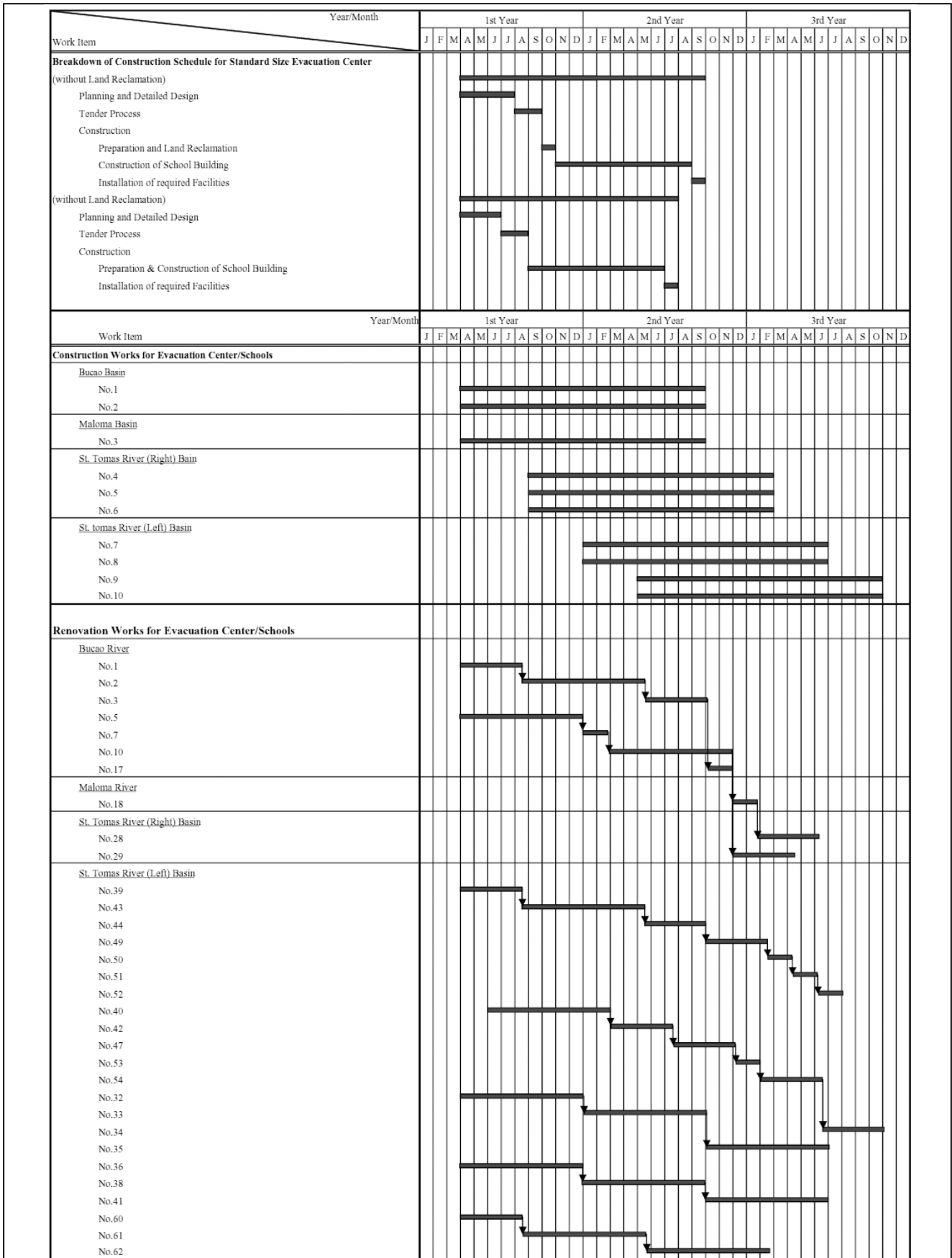
THE GOVERNMENT OF THE PHILIPPINES
THE DEPARTMENT OF PUBLIC WORKS AND HIGHWAYS

**The Study on Sabo and Flood Control for
Western River Basins of Mount Pinatubo in
the Republic of the Philippines**

JAPAN INTERNATIONAL COOPERATION AGENCY

Figure 3.3.1

**Proportion of Capacity of Evacuation Centers
to Number of Evacuees**



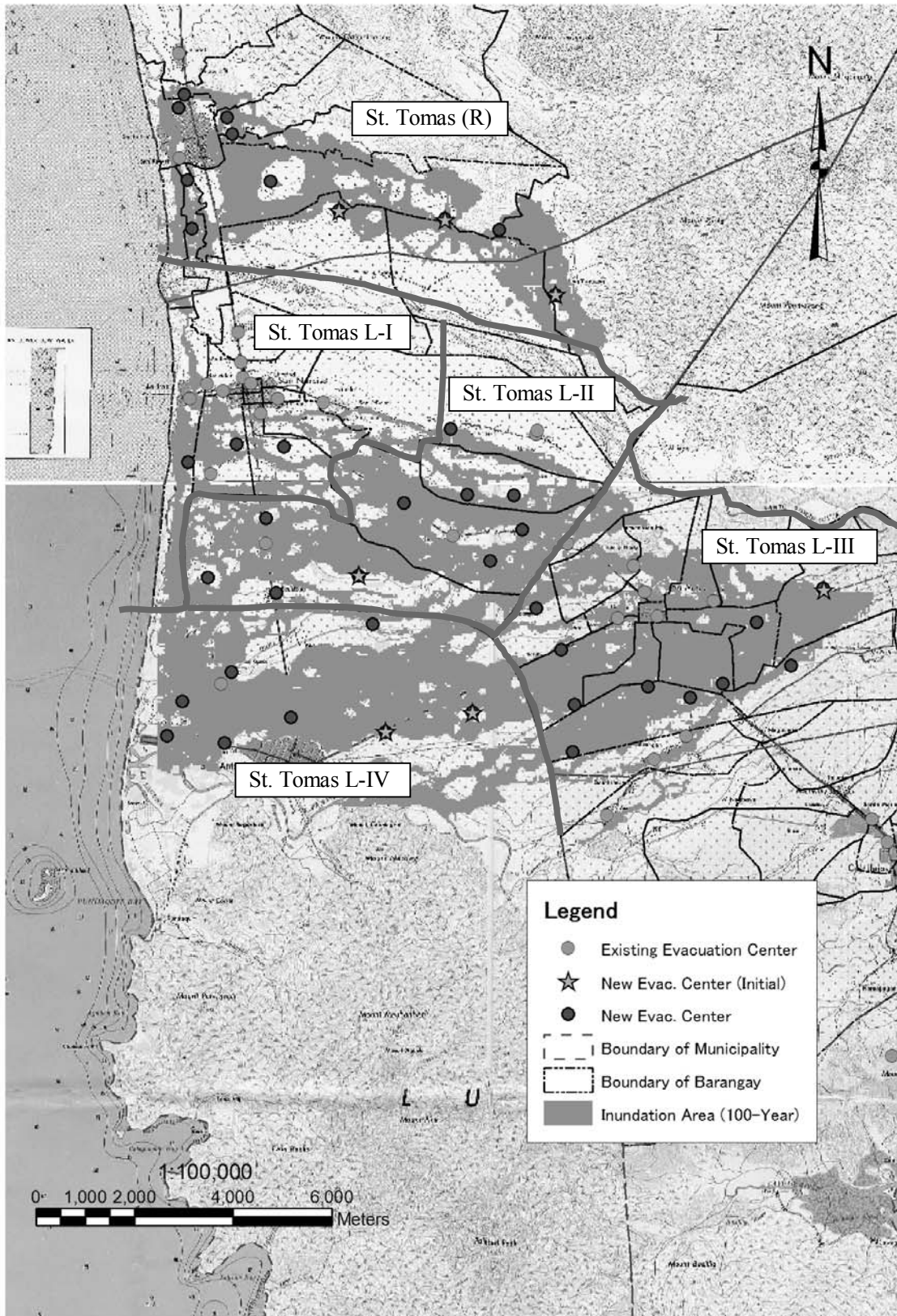
THE GOVERNMENT OF THE PHILIPPINES
THE DEPARTMENT OF PUBLIC WORKS AND HIGHWAYS

**The Study on Sabo and Flood Control for
Western River Basins of Mount Pinatubo in
the Republic of the Philippines**

JAPAN INTERNATIONAL COOPERATION AGENCY

Figure 3.3.2

**Implementation Schedule for Evacuation
System**



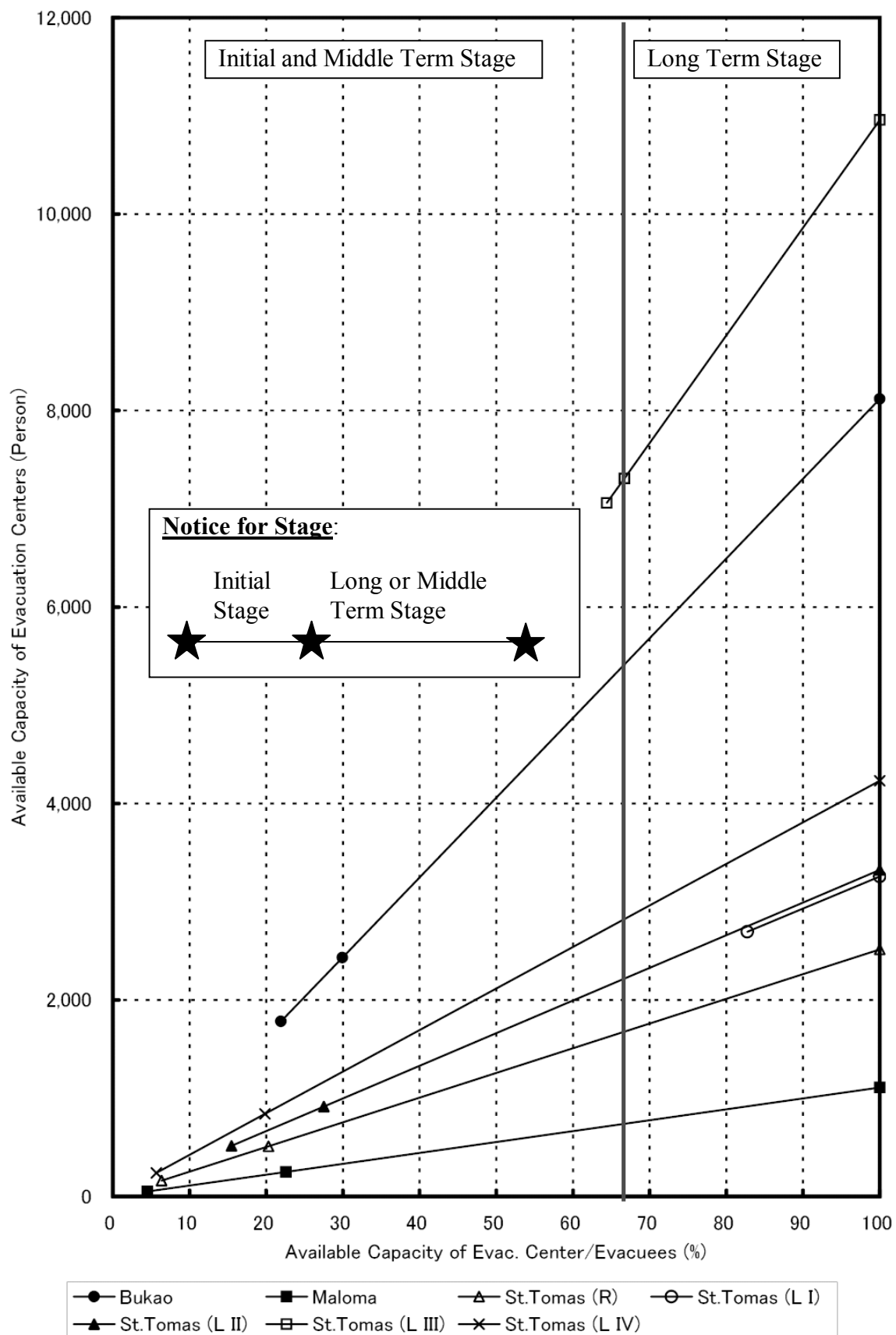
THE GOVERNMENT OF THE PHILIPPINES
THE DEPARTMENT OF PUBLIC WORKS AND HIGHWAYS

**The Study on Sabo and Flood Control for
Western River Basins of Mount Pinatubo in
the Republic of the Philippines**

JAPAN INTERNATIONAL COOPERATION AGENCY

Figure 3.3.3

Division of Inundation Area



THE GOVERNMENT OF THE PHILIPPINES
 THE DEPARTMENT OF PUBLIC WORKS AND HIGHWAYS

**The Study on Sabo and Flood Control for
 Western River Basins of Mount Pinatubo in
 the Republic of the Philippines**

JAPAN INTERNATIONAL COOPERATION AGENCY

Figure 3.3.4

**Procedure for Construction of Evacuation
 Centers**