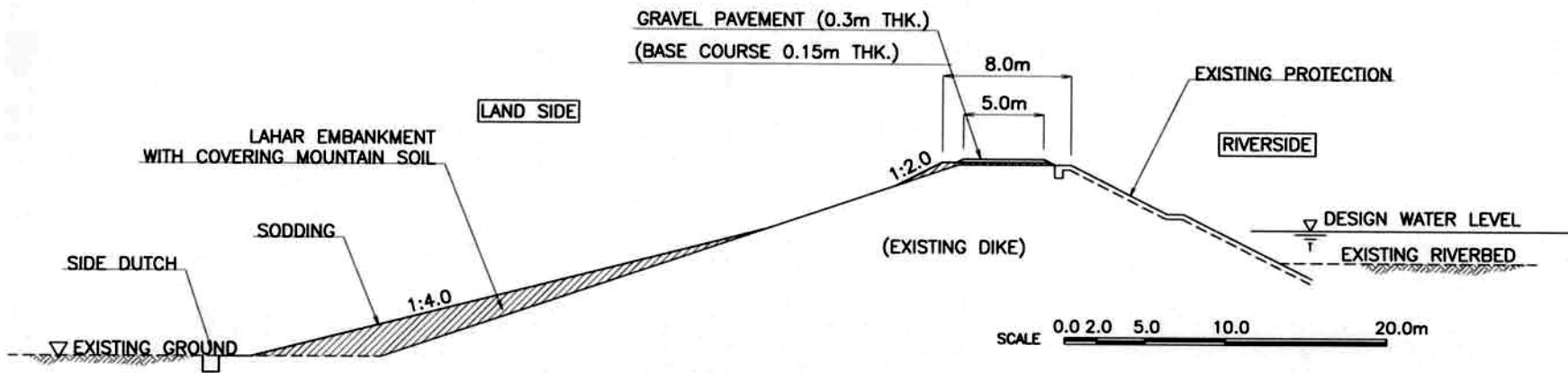


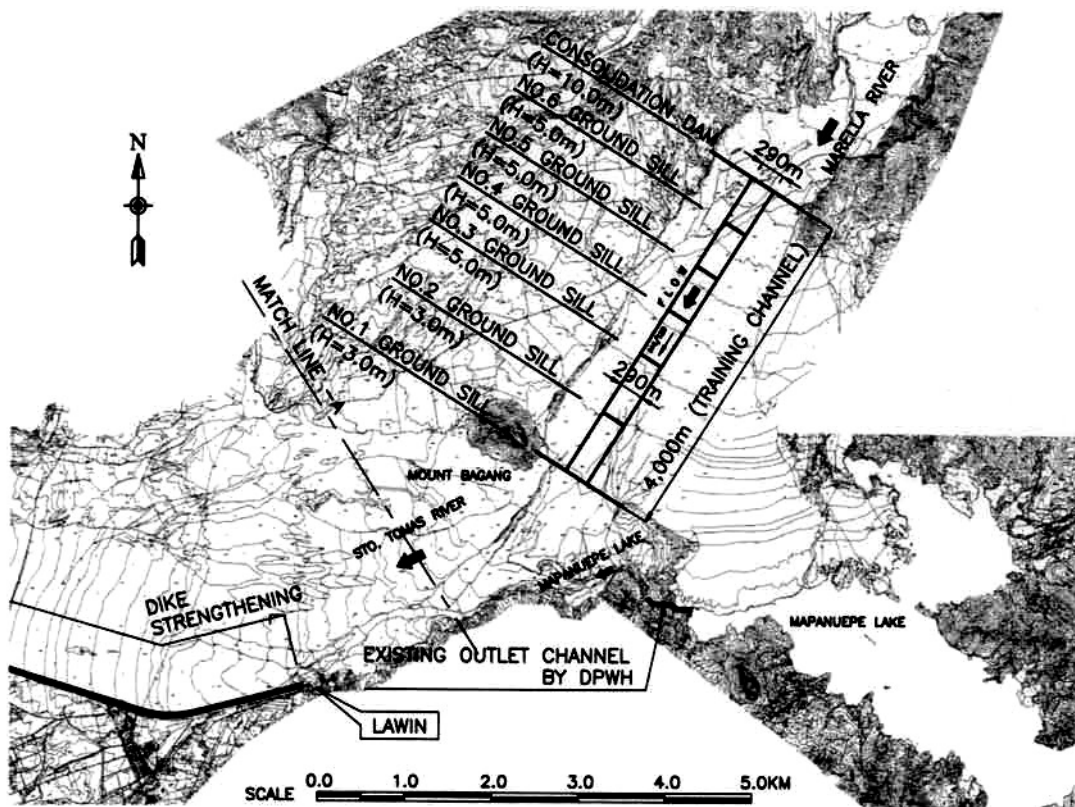
TYPICAL CROSS SECTION OF DIKE HEIGHTENING



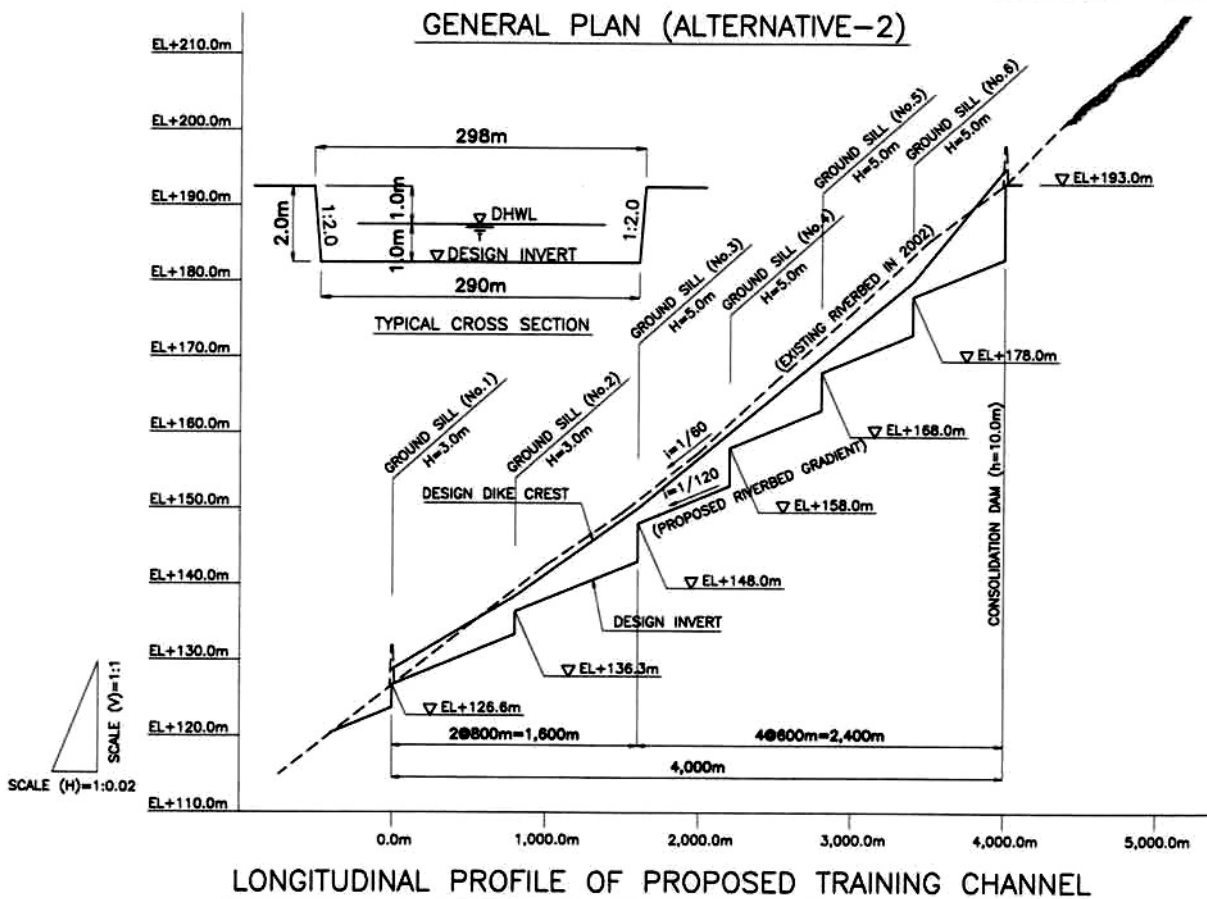
TYPICAL CROSS SECTION OF DIKE STRENGTHENING

Figure 1.7.3

Typical Cross Sections of River Improvement
(Alternative-1) in the Sto. Tomas River



GENERAL PLAN (ALTERNATIVE-2)



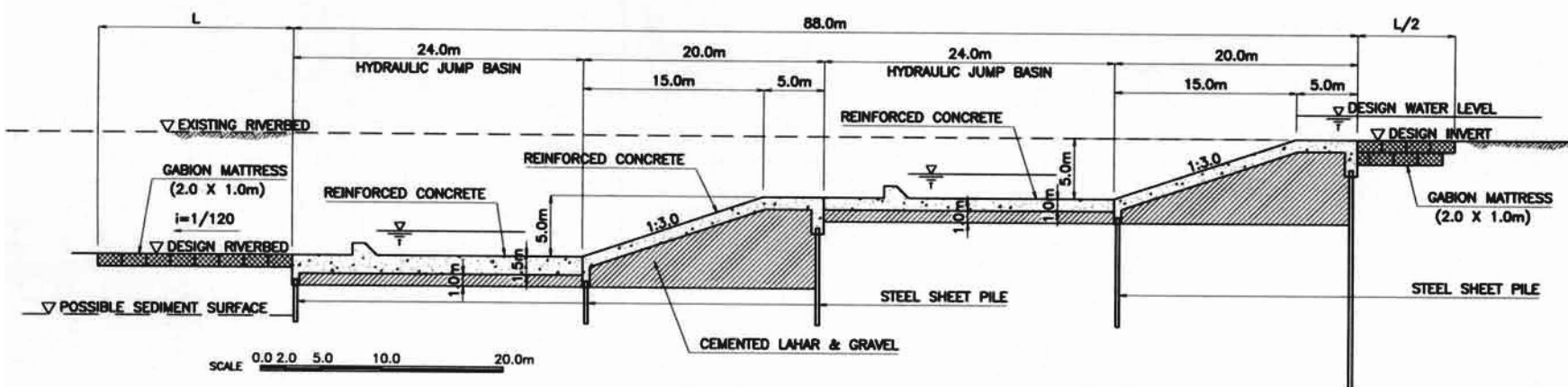
LONGITUDINAL PROFILE OF PROPOSED TRAINING CHANNEL

THE GOVERNMENT OF THE PHILIPPINES
THE DEPARTMENT OF PUBLIC WORKS AND HIGHWAYS

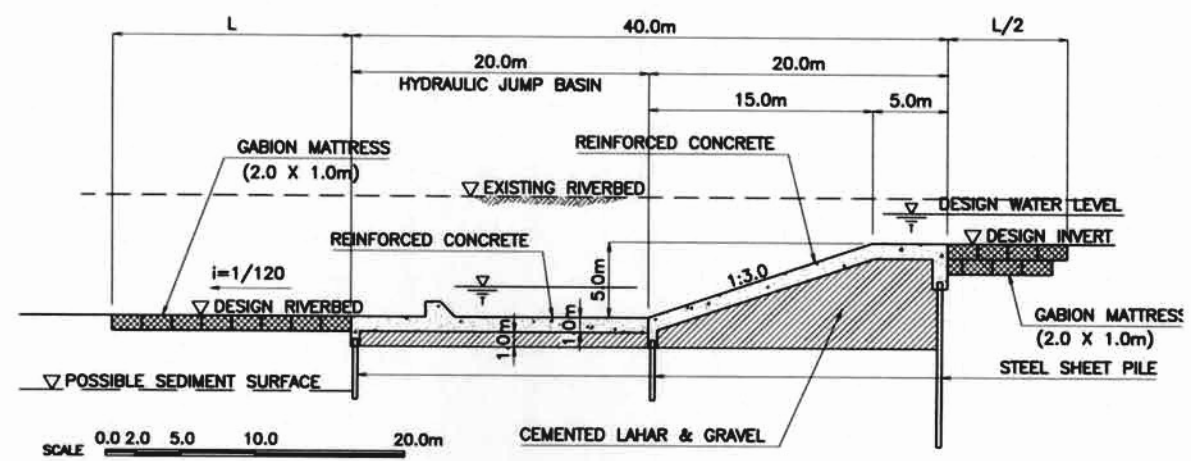
The Study on Sabo and Flood Control for
Western River Basins of Mount Pinatubo in
the Republic of the Philippines

JAPAN INTERNATIONAL COOPERATION AGENCY

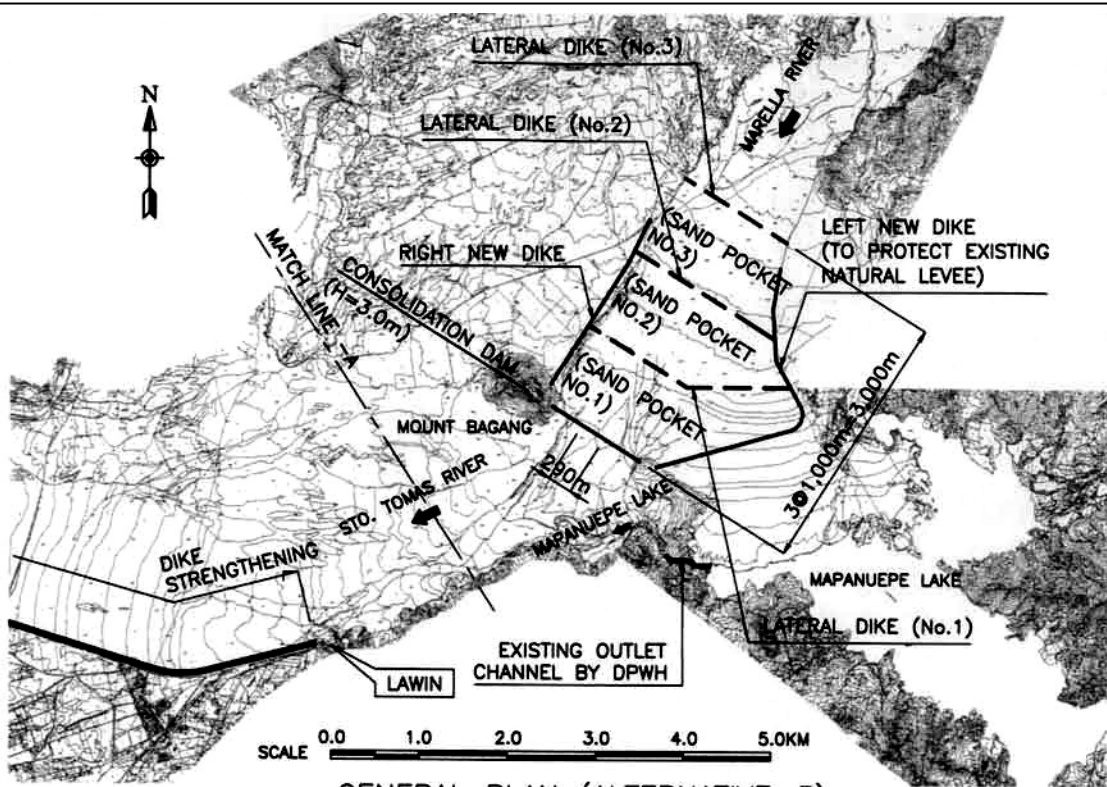
Figure 1.7.4
General Layout of Proposed Structural
Measures (Alternative-2) in the Sto. Tomas
River



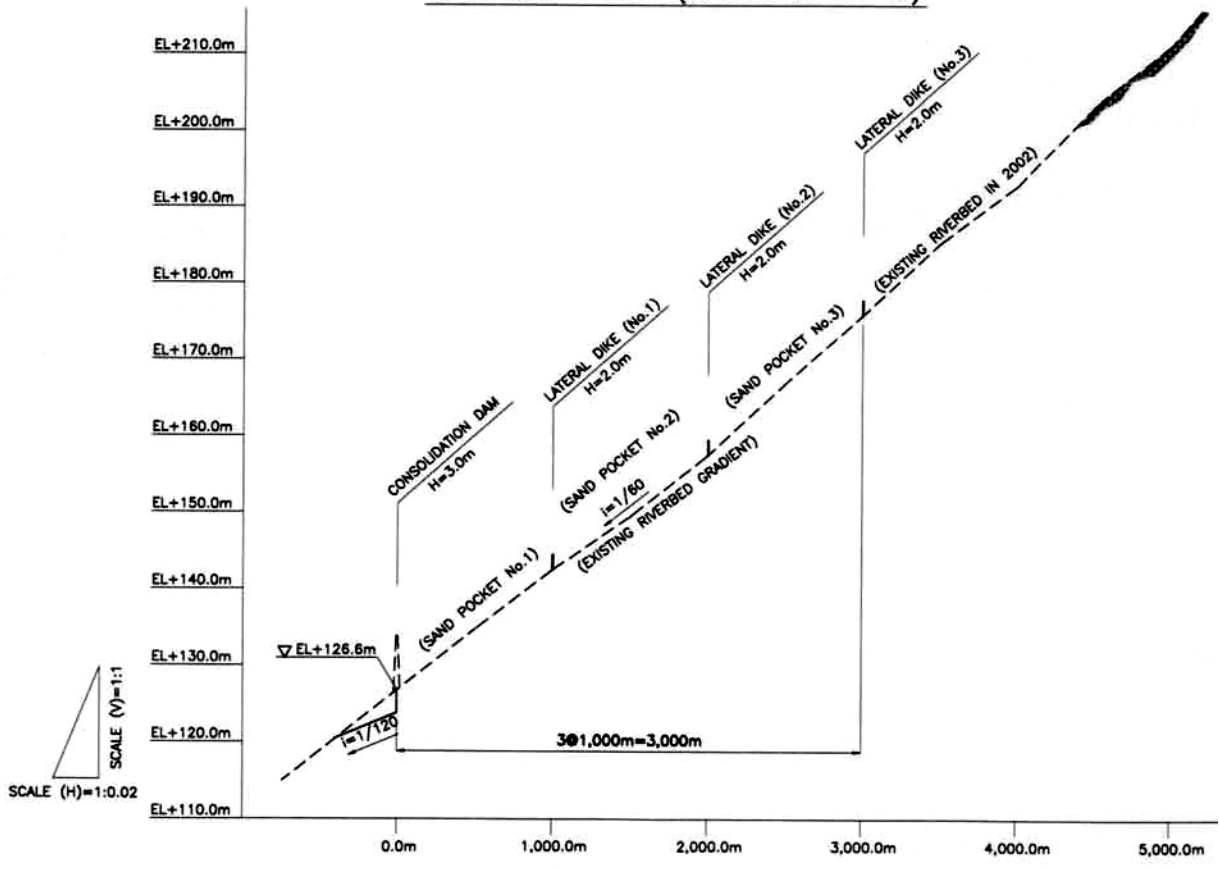
TYPICAL CROSS SECTION OF CONSOLIDATION DAM (OVERFLOW SECTION)



TYPICAL CROSS SECTION OF GROUND SILL



GENERAL PLAN (ALTERNATIVE-3)



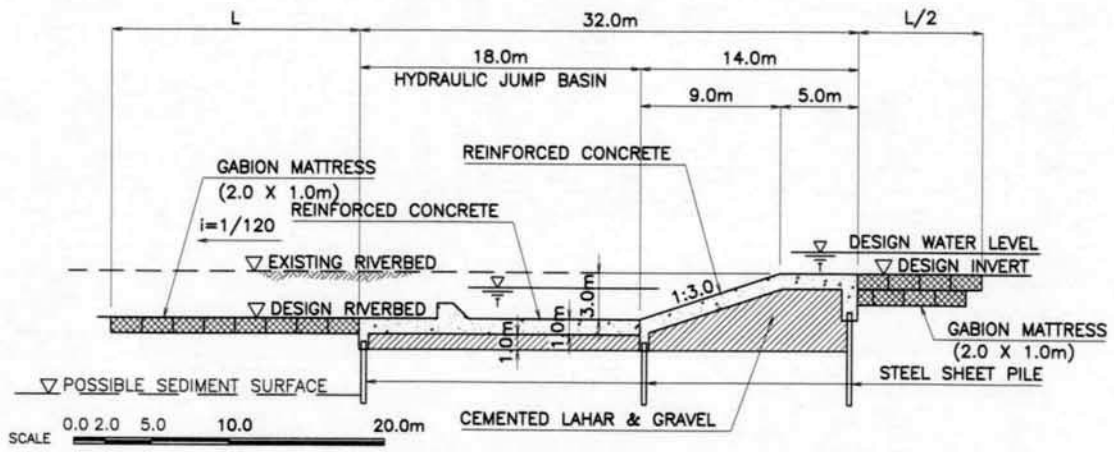
LONGITUDINAL PROFILE OF PROPOSED SAND POCKETS

THE GOVERNMENT OF THE PHILIPPINES
THE DEPARTMENT OF PUBLIC WORKS AND HIGHWAYS

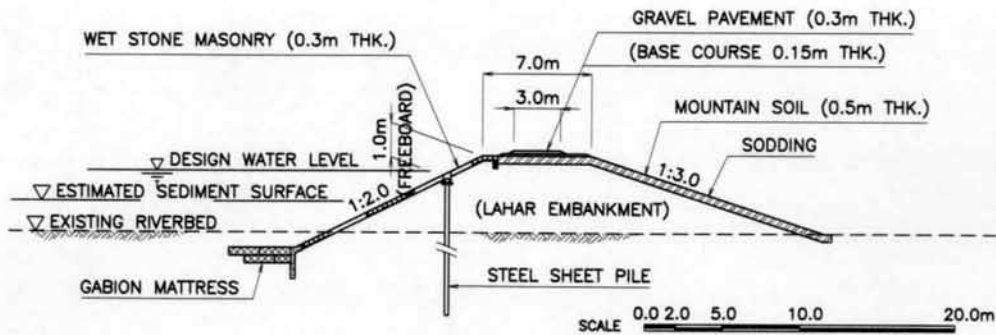
**The Study on Sabo and Flood Control for
Western River Basins of Mount Pinatubo in
the Republic of the Philippines**

JAPAN INTERNATIONAL COOPERATION AGENCY

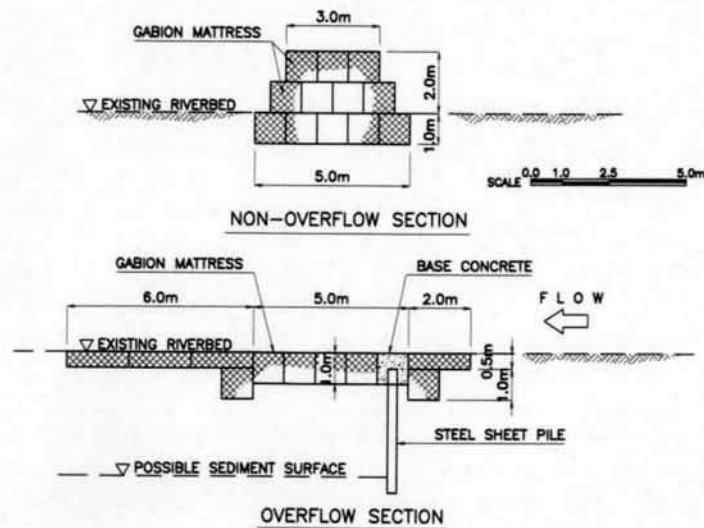
**Figure 1.7.6
General Layout of Proposed Structural
Measures (Alternative-3) in the Sto. Tomas
River**



TYPICAL CROSS SECTION OF CONSOLIDATION DAM (OVERFLOW SECTION)



TYPICAL CROSS SECTION OF RING DIKE



TYPICAL CROSS SECTION OF LATERAL DIKE

THE GOVERNMENT OF THE PHILIPPINES
THE DEPARTMENT OF PUBLIC WORKS AND HIGHWAYS

**The Study on Sabo and Flood Control for
Western River Basins of Mount Pinatubo in
the Republic of the Philippines**

JAPAN INTERNATIONAL COOPERATION AGENCY

Figure 1.7.7
**Typical Cross Sections of Proposed Structural
Measures (Alternative-3) in the Sto. Tomas
River**