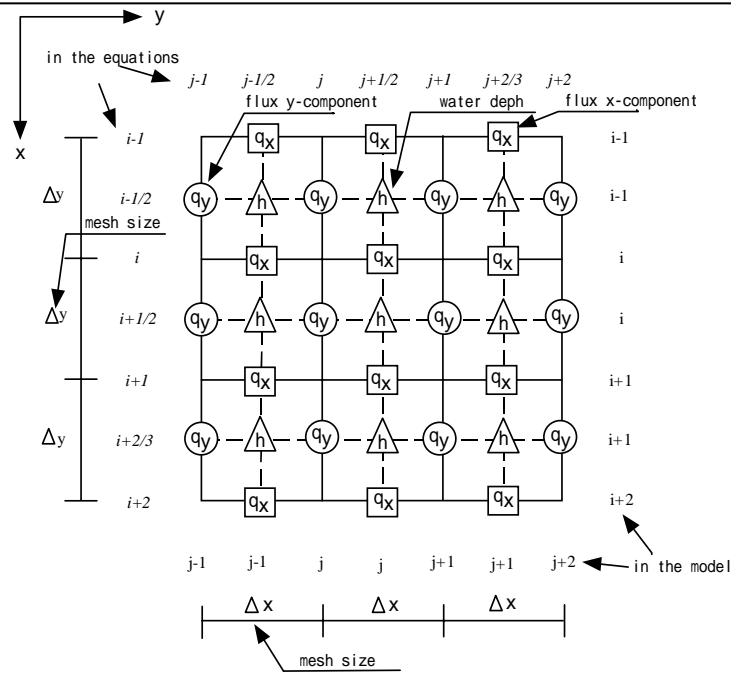


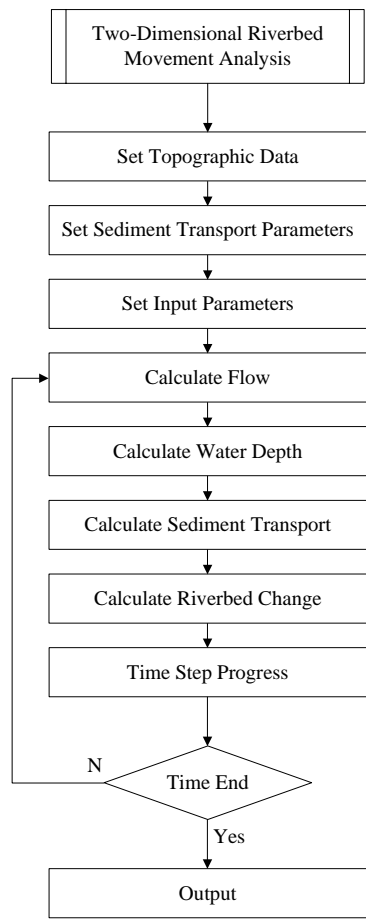
Source: JICA Study Team

THE GOVERNMENT OF THE PHILIPPINES
 THE DEPARTMENT OF PUBLIC WORKS AND HIGHWAYS
**The Study on Sabo and Flood Control for
 Western River Basins of Mount Pinatubo
 in the Republic of the Philippines**
 JAPAN INTERNATIONAL COOPERATION AGENCY

Figure 1.2.2
**Changes in River Areas between 1990
 and 2002**



Coordinates and locations of q_x , q_y , and h on the staggered mesh system



Flowchart of Calculation

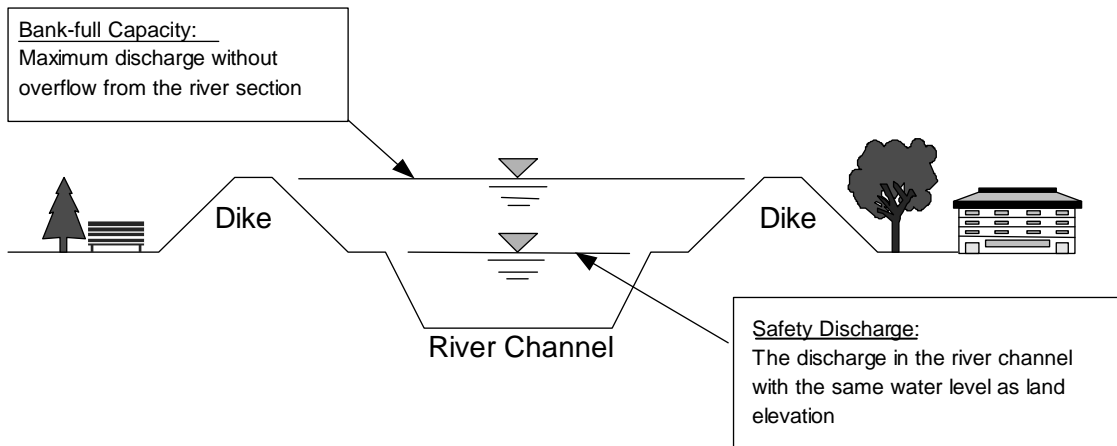
THE GOVERNMENT OF THE PHILIPPINES
THE DEPARTMENT OF PUBLIC WORKS AND HIGHWAYS

**The Study on Sabo and Flood Control for
Western River Basins of Mount Pinatubo in
the Republic of the Philippines**

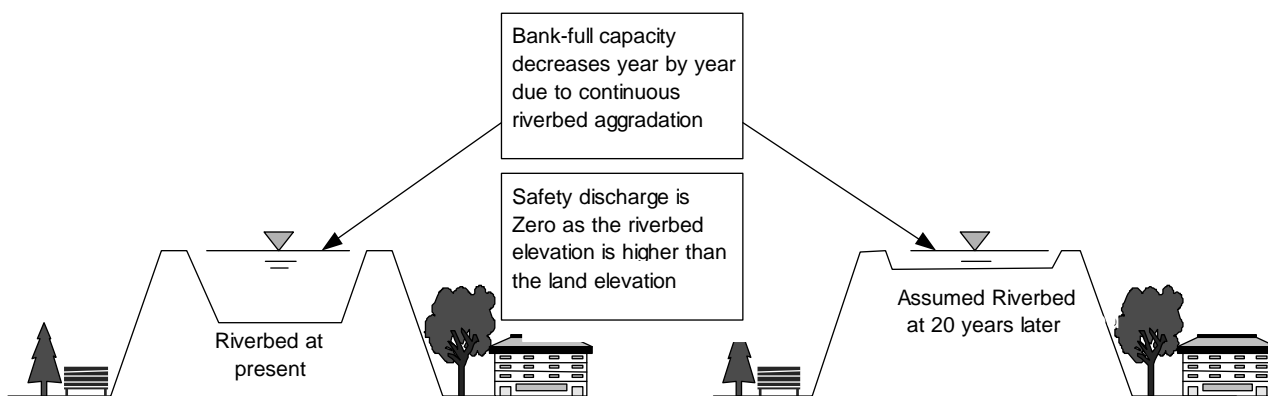
JAPAN INTERNATIONAL COOPERATION AGENCY

Figure 1.3.1

**Calculation Procedure of Two-Dimensional
Mudflow Analysis**



Definition of Safety Discharge and Bank-full Capacity



Change in Bank-full Capacity

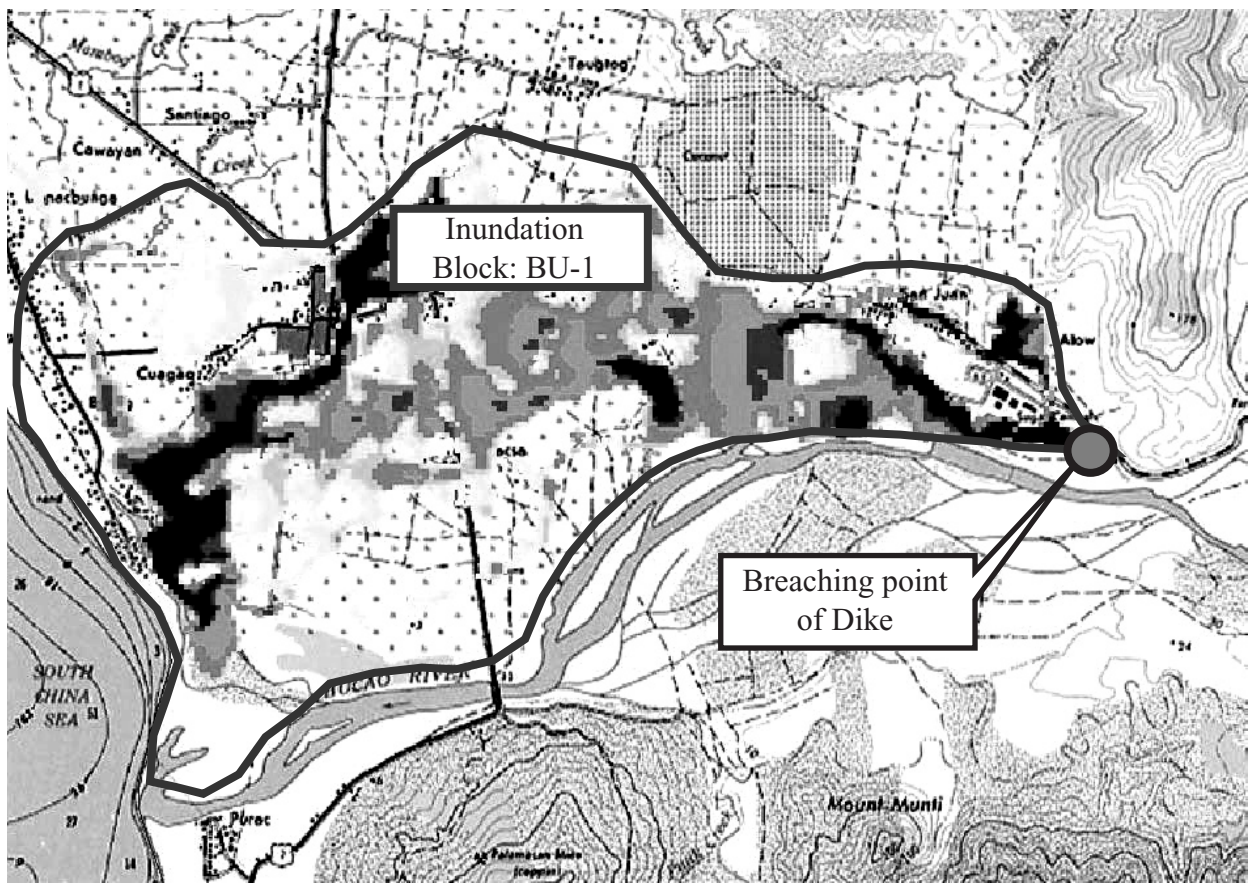
THE GOVERNMENT OF THE PHILIPPINES
THE DEPARTMENT OF PUBLIC WORKS AND HIGHWAYS

**The Study on Sabo and Flood Control for
Western River Basins of Mount Pinatubo in
the Republic of the Philippines**

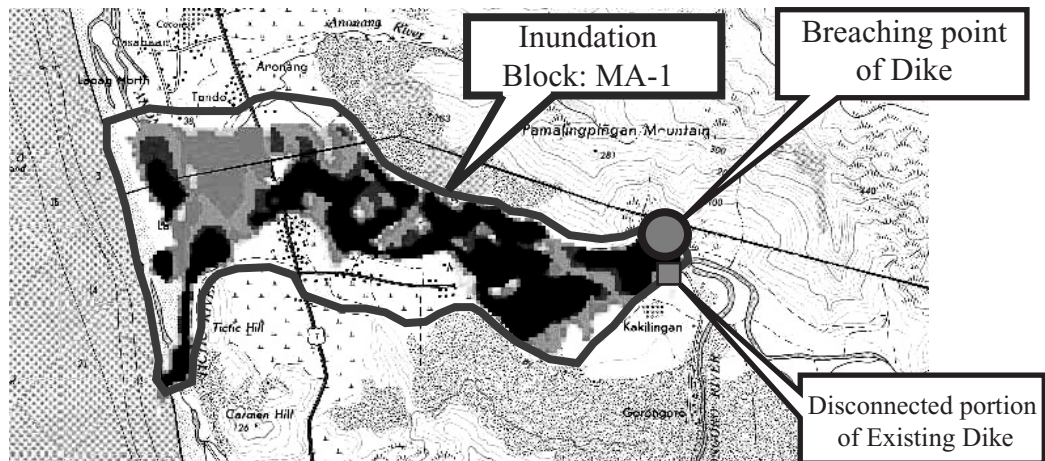
JAPAN INTERNATIONAL COOPERATION AGENCY

Figure 1.3.2

**Definition of Safety Discharge and Bank-full
Capacity**



Bucao River Right Bank Side Lower Stretch



Maloma River Right Bank Side Lower Stretch

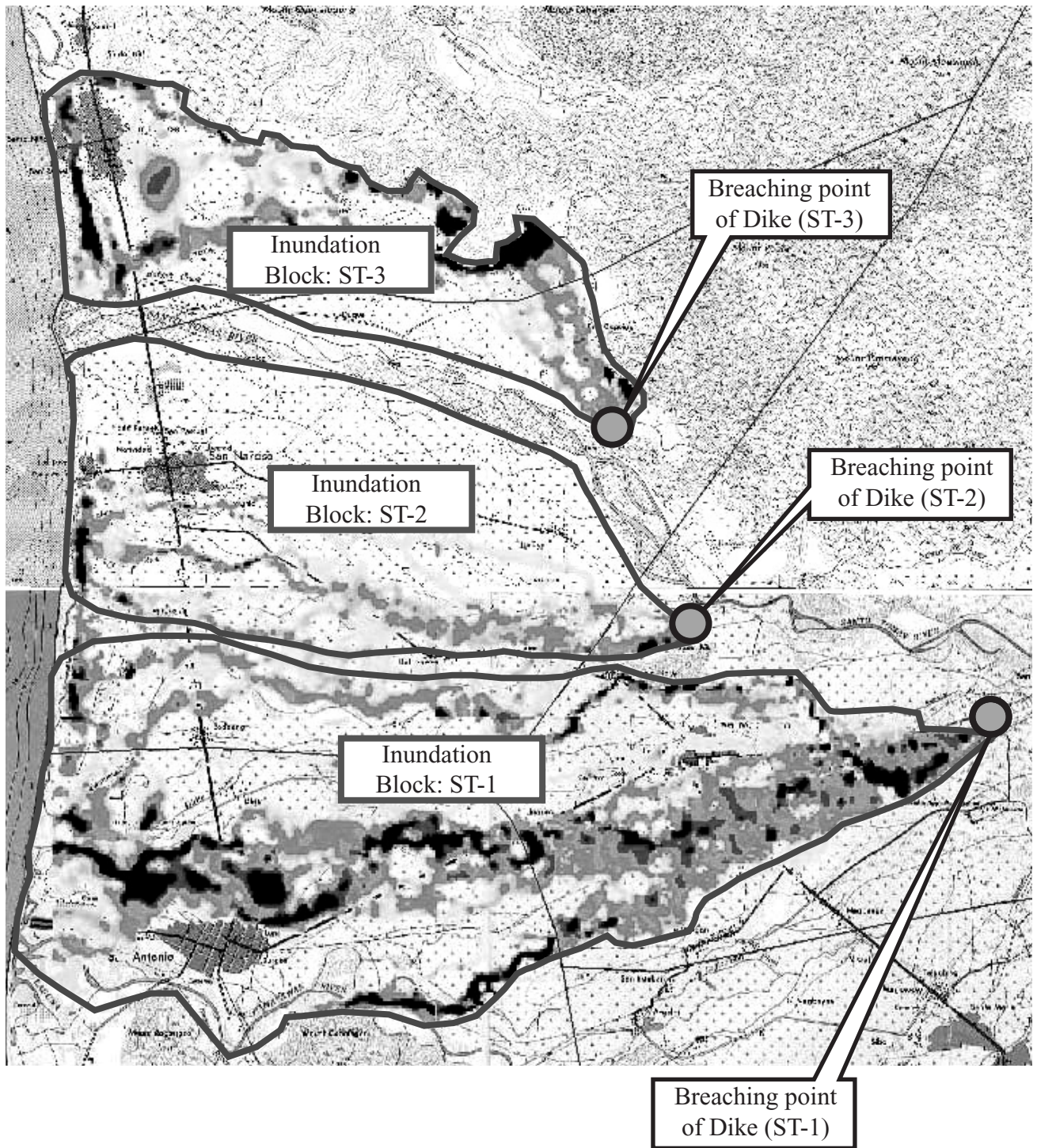
THE GOVERNMENT OF THE PHILIPPINES
THE DEPARTMENT OF PUBLIC WORKS AND HIGHWAYS

**The Study on Sabo and Flood Control for
Western River Basins of Mount Pinatubo
in the Republic of the Philippines**

JAPAN INTERNATIONAL COOPERATION AGENCY

Figure 1.3.3

**Inundation Blocks and Breaching Points
of Dike for The Bucao & Maloma Rivers**



THE GOVERNMENT OF THE PHILIPPINES
THE DEPARTMENT OF PUBLIC WORKS AND HIGHWAYS

**The Study on Sabo and Flood Control for
Western River Basins of Mount Pinatubo
in the Republic of the Philippines**

JAPAN INTERNATIONAL COOPERATION AGENCY

Figure 1.3.4

**Inundation Blocks and Breaching Points
of Dike for the Sto. Tomas River**