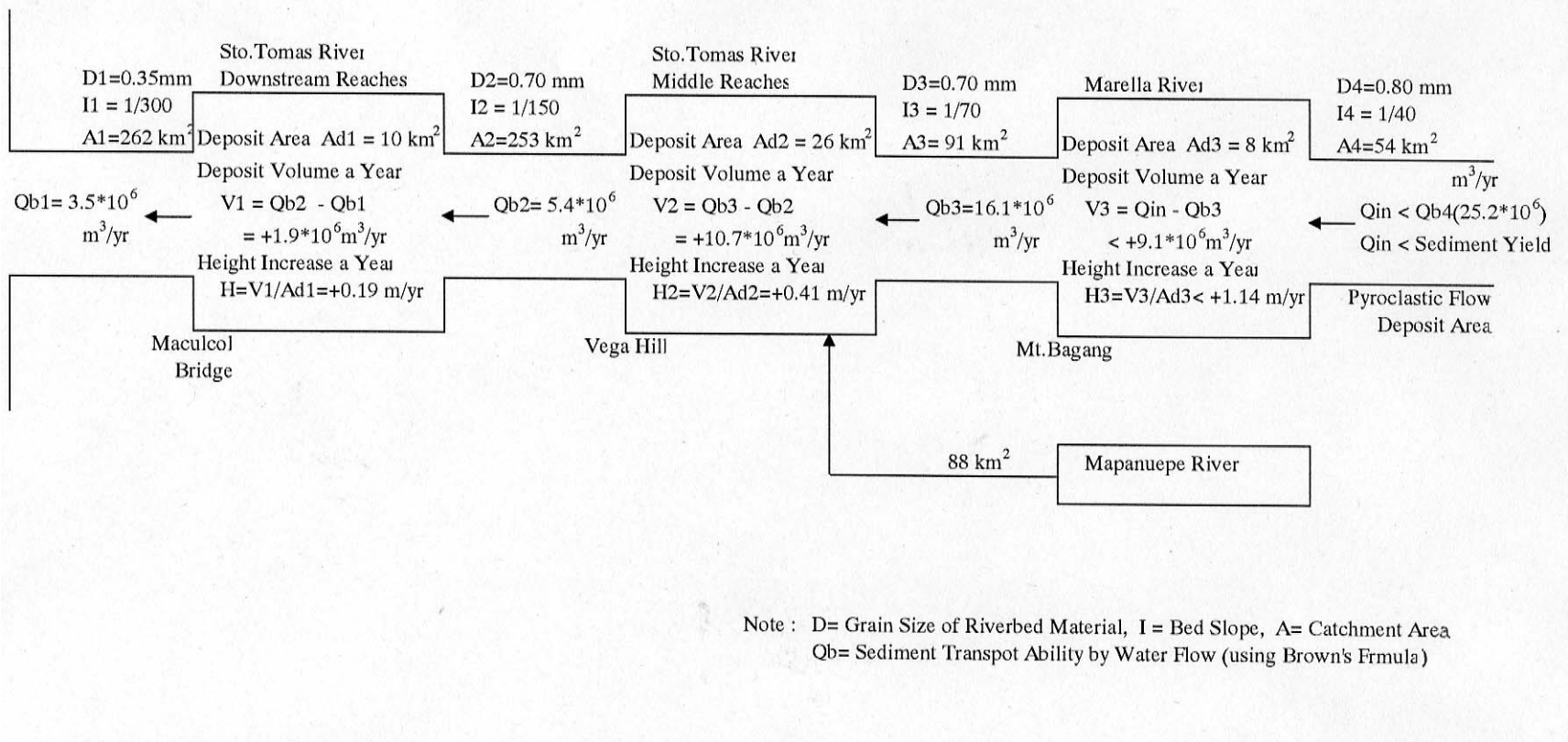


Note : D= Grain Size of Riverbed Material, I = Bed Slope, A= Catchment Area
 Qb= Sediment Transport Ability by Water Flow (using Brown's Formula)

Figure 2.3.2

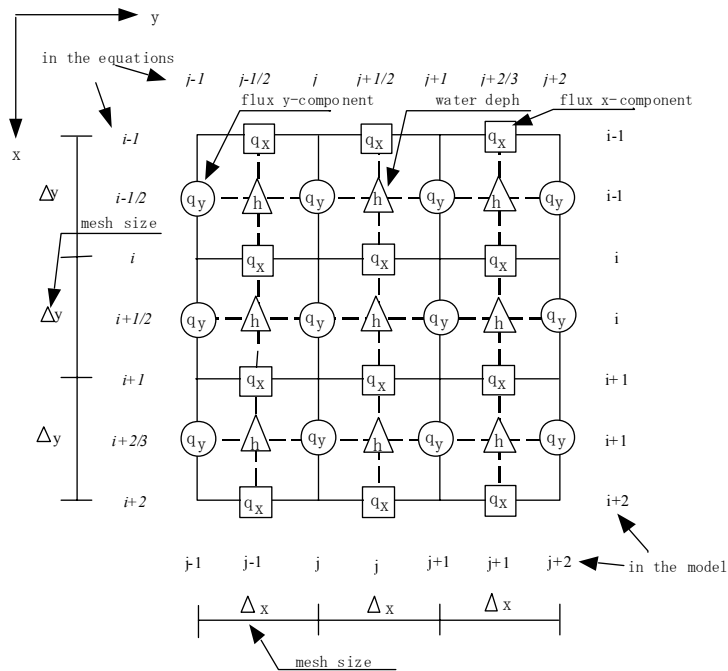
Annual Sediment Transport Capacity in the
 Maloma River



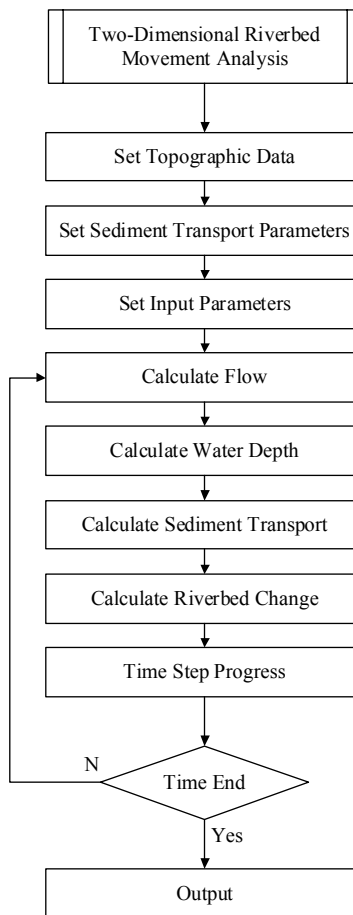
Note : D= Grain Size of Riverbed Material, I = Bed Slope, A= Catchment Area
 Qb= Sediment Transport Ability by Water Flow (using Brown's Formula)

Figure 2.3.3

Annual Sediment Transport Capacity in the
 Sto. Tomas River



Coordinates and locations of q_x , q_y , and h on the staggered mesh system



Flowchart of Calculation

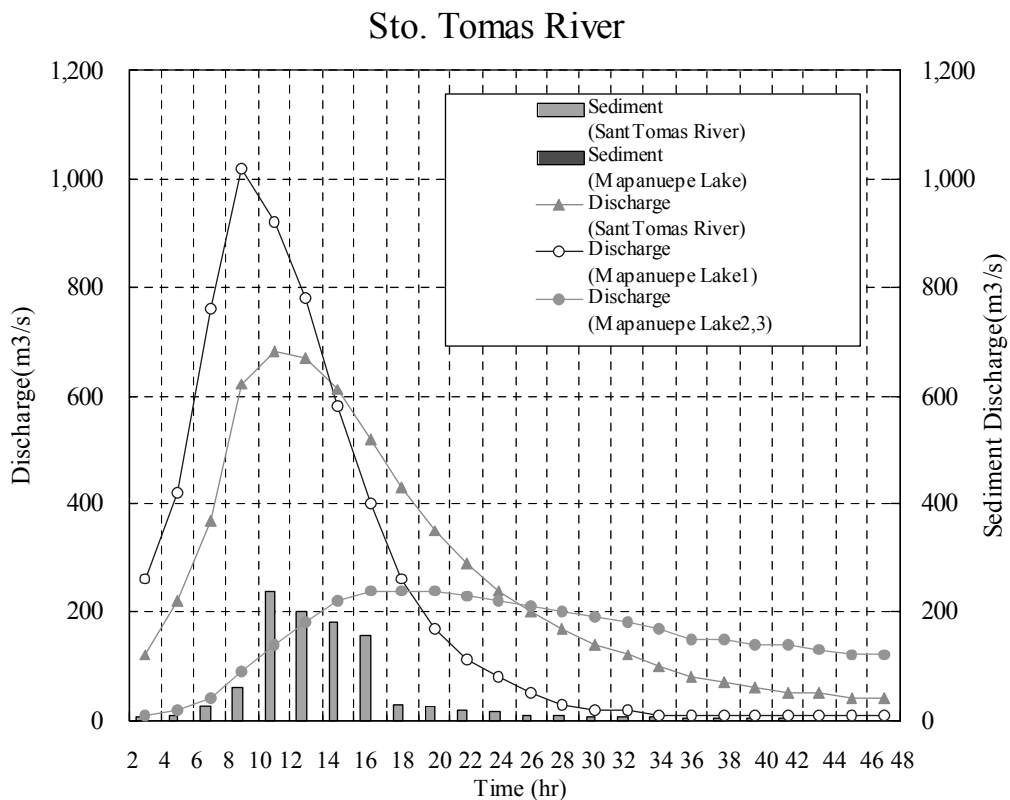
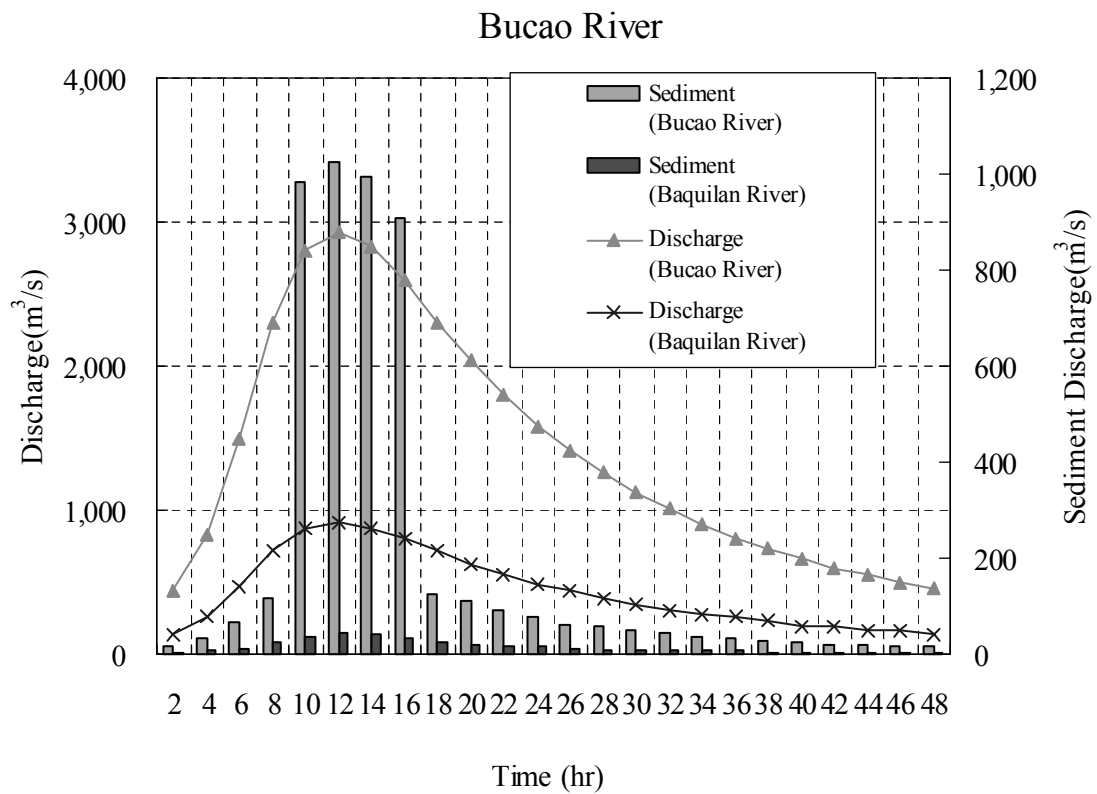
THE GOVERNMENT OF THE PHILIPPINES
THE DEPARTMENT OF PUBLIC WORKS AND HIGHWAYS

**The Study on Sabo and Flood Control for
Western River Basins of Mount Pinatubo in
the Republic of the Philippines**

JAPAN INTERNATIONAL COOPERATION AGENCY

Figure 3.2.1

**Calculation Procedure of Two-Dimensional
Mudflow Analysis**



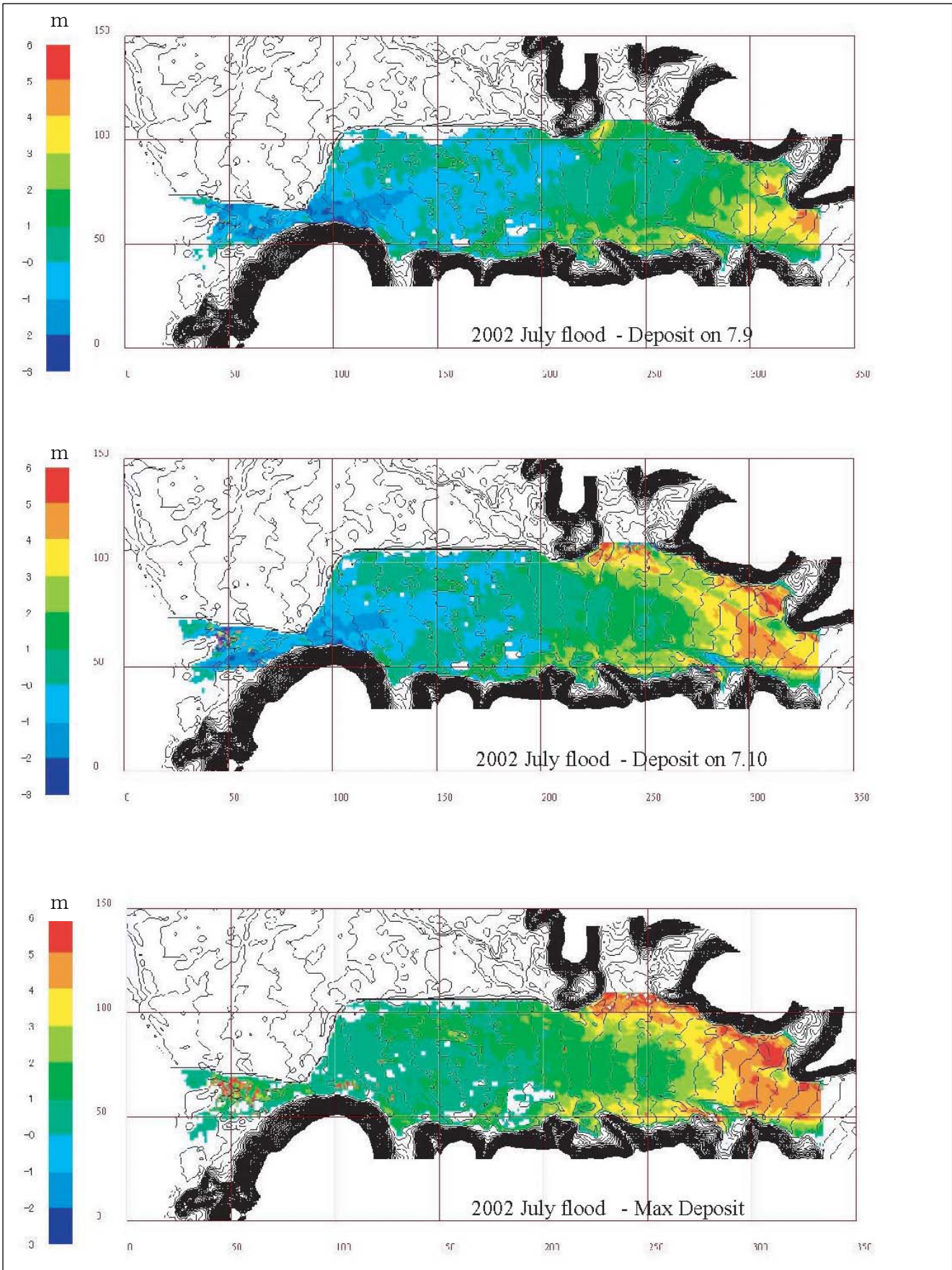
THE GOVERNMENT OF THE PHILIPPINES
THE DEPARTMENT OF PUBLIC WORKS AND HIGHWAYS

**The Study on Sabo and Flood Control for
Western River Basins of Mount Pinatubo in the
Republic of the Philippines**

JAPAN INTERNATIONAL COOPERATION AGENCY

Figure 3.2.2

Hydrograph and Sediment Input for Two-Dimensional Mudflow Analysis



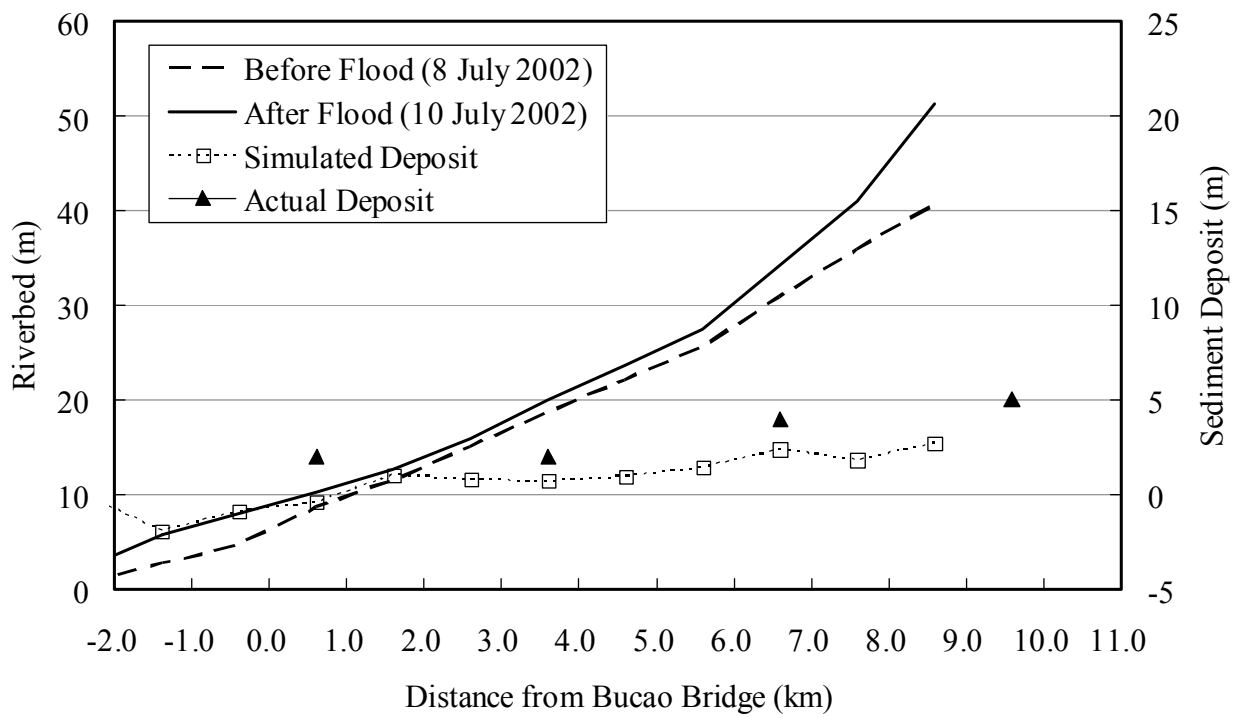
THE GOVERNMENT OF THE PHILIPPINES
THE DEPARTMENT OF PUBLIC WORKS AND HIGHWAYS

**The Study on Sabo and Flood Control for
Western River Basins of Mount Pinatubo in
the Republic of the Philippines**

JAPAN INTERNATIONAL COOPERATION AGENCY

Figure 3.2.3

**Calibration Results for Two-Dimensional
Mudflow Model**



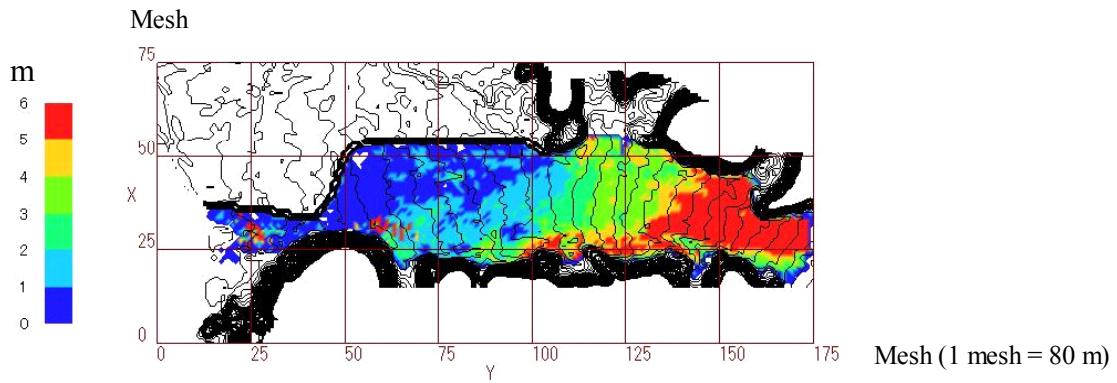
THE GOVERNMENT OF THE PHILIPPINES
THE DEPARTMENT OF PUBLIC WORKS AND HIGHWAYS

**The Study on Sabo and Flood Control for
Western River Basins of Mount Pinatubo in
the Republic of the Philippines**

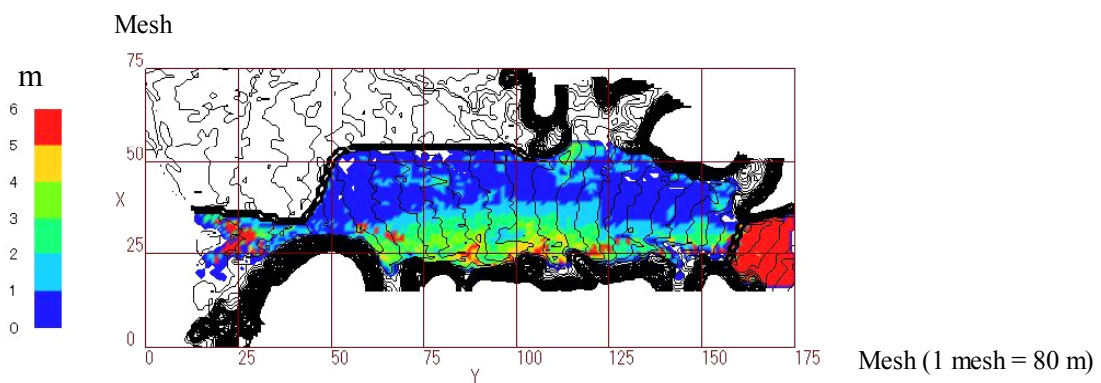
JAPAN INTERNATIONAL COOPERATION AGENCY

Figure 3.2.4

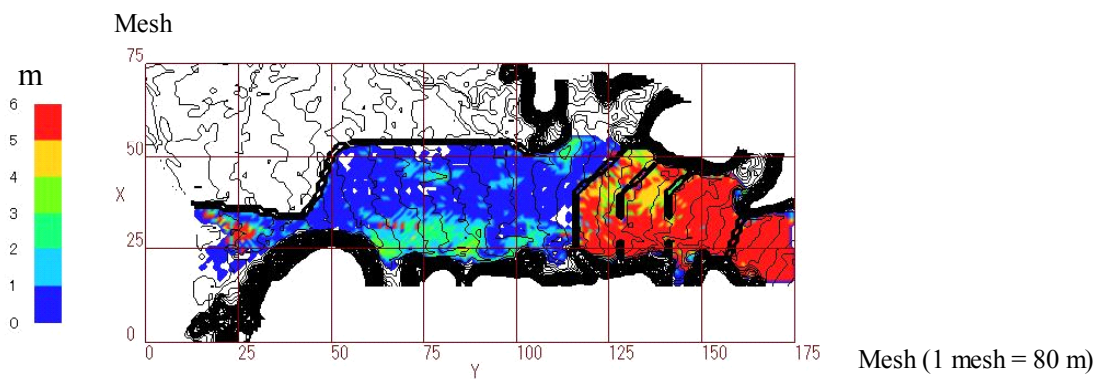
**Longitudinal Profile of Simulated and Actual
Sediment Deposit by the Lahar in July 2002**



ALTERNATIVE 1 Maximum Deposit



ALTERNATIVE 2 Maximum Deposit



ALTERNATIVE 3 Maximum Deposit

THE GOVERNMENT OF THE PHILIPPINES
THE DEPARTMENT OF PUBLIC WORKS AND HIGHWAYS

**The Study on Sabo and Flood Control for
Western River Basins of Mount Pinatubo in
the Republic of the Philippines**

JAPAN INTERNATIONAL COOPERATION AGENCY

Figure 3.2.5

**Simulated Maximum Deposit by a 20-Year
Probable Flood in the Bucao River**