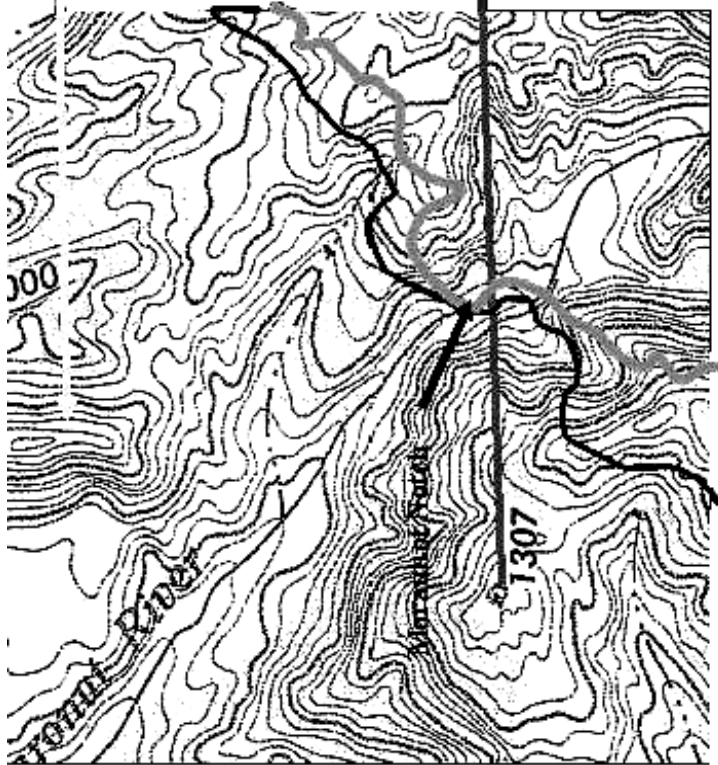


THE GOVERNMENT OF THE PHILIPPINES
 THE DEPARTMENT OF PUBLIC WORKS AND HIGHWAYS
**The Study on Sabo and Flood Control for
 Western River Basins of Mount Pinatubo
 in the Republic of the Philippines**
 JAPAN INTERNATIONAL COOPERATION AGENCY

Figure 2.4.2
**Geologic Map and Typical Photograph of
 Each Geology**



After Eruption
 (Topographic map prepared for
 this study based on aerial photos
 taken in May and June 2002.)



Before Eruption
 (1/50,000 topographic map,
 NAMRIA, 1977)

THE GOVERNMENT OF THE PHILIPPINES
 THE DEPARTMENT OF PUBLIC WORKS AND HIGHWAYS

**The Study on Sabo and Flood Control for
 Western River Basins of Mount Pinatubo in the
 Republic of the Philippines**

JAPAN INTERNATIONAL COOPERATION AGENCY

Figure 2.4.3

**Comparison of Topography of Maraunot
 Notch before and after Eruption**



Before Breach

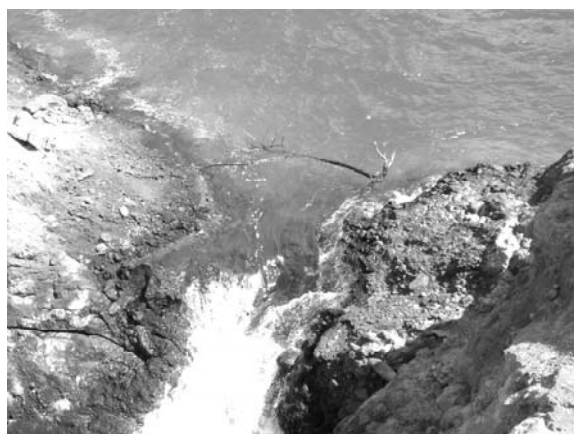


After Breach

Aerial Photograph of Maraunot Notch



30 July 2002



28 February 2003

Current Condition of Maraunot Notch

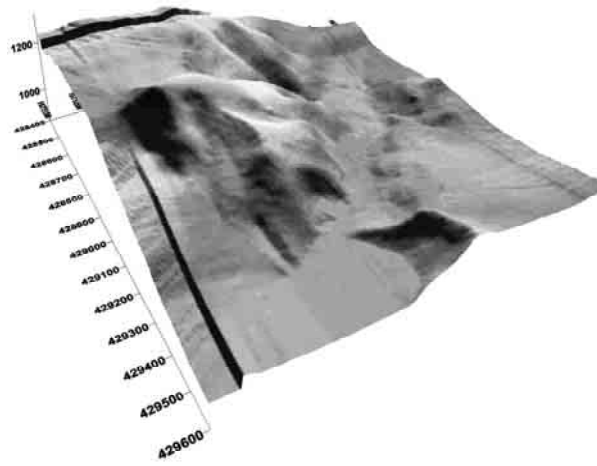
THE GOVERNMENT OF THE PHILIPPINES
THE DEPARTMENT OF PUBLIC WORKS AND HIGHWAYS

**The Study on Sabo and Flood Control for
Western River Basins of Mount Pinatubo in the
Republic of the Philippines**

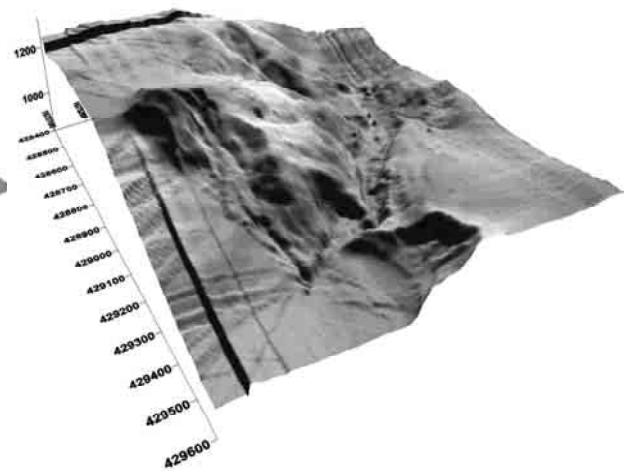
JAPAN INTERNATIONAL COOPERATION AGENCY

Figure 2.4.4

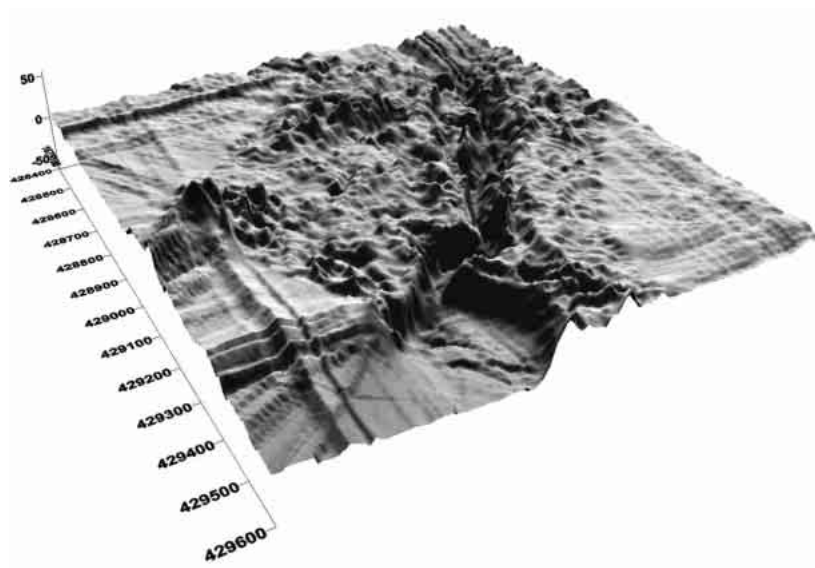
Condition of Maraunot Notch



Before Collapse



After Collapse



Difference Before and After Collapse

THE GOVERNMENT OF THE PHILIPPINES
THE DEPARTMENT OF PUBLIC WORKS AND HIGHWAYS

**The Study on Sabo and Flood Control for
Western River Basins of Mount Pinatubo in the
Republic of the Philippines**

JAPAN INTERNATIONAL COOPERATION AGENCY

Figure 2.4.5

**3-Dimensional Image of Marañot Notch
before and after Collapse**