

Light gray Lahar SAND,
with fine to coarse
pyroclastic materials.
(Loose to med. dense)

L-49

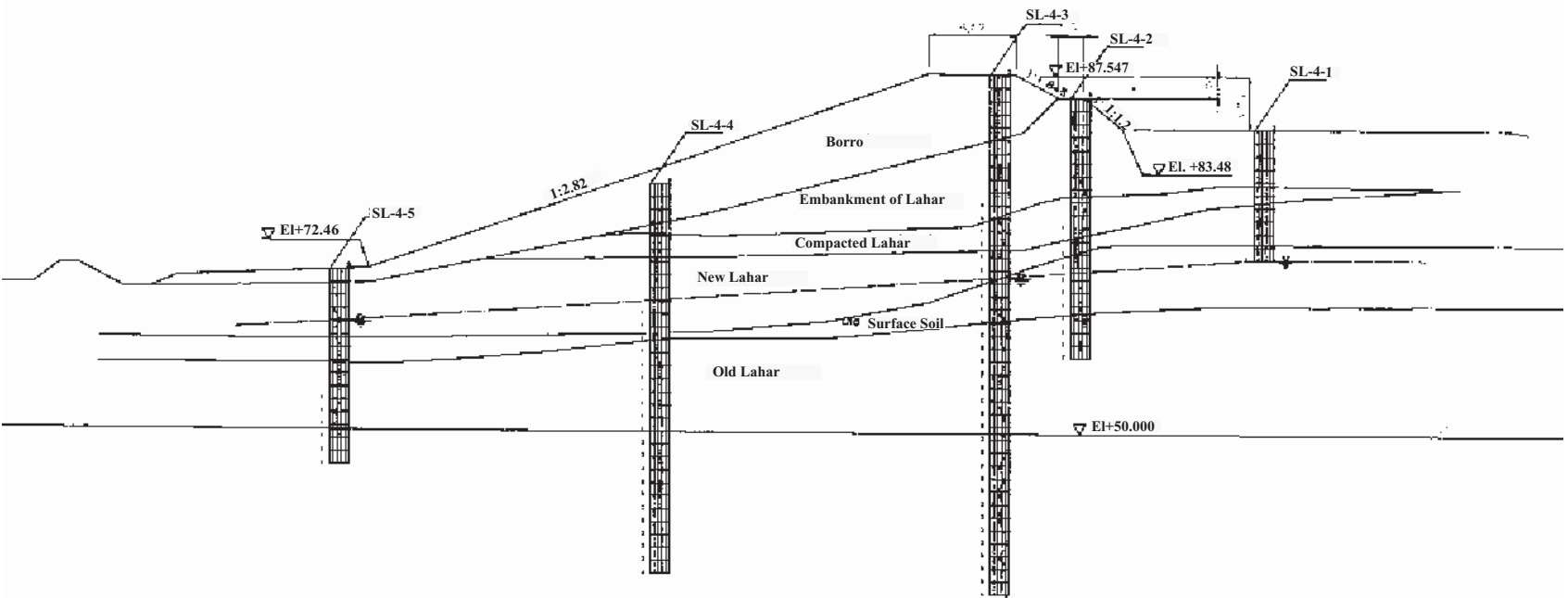
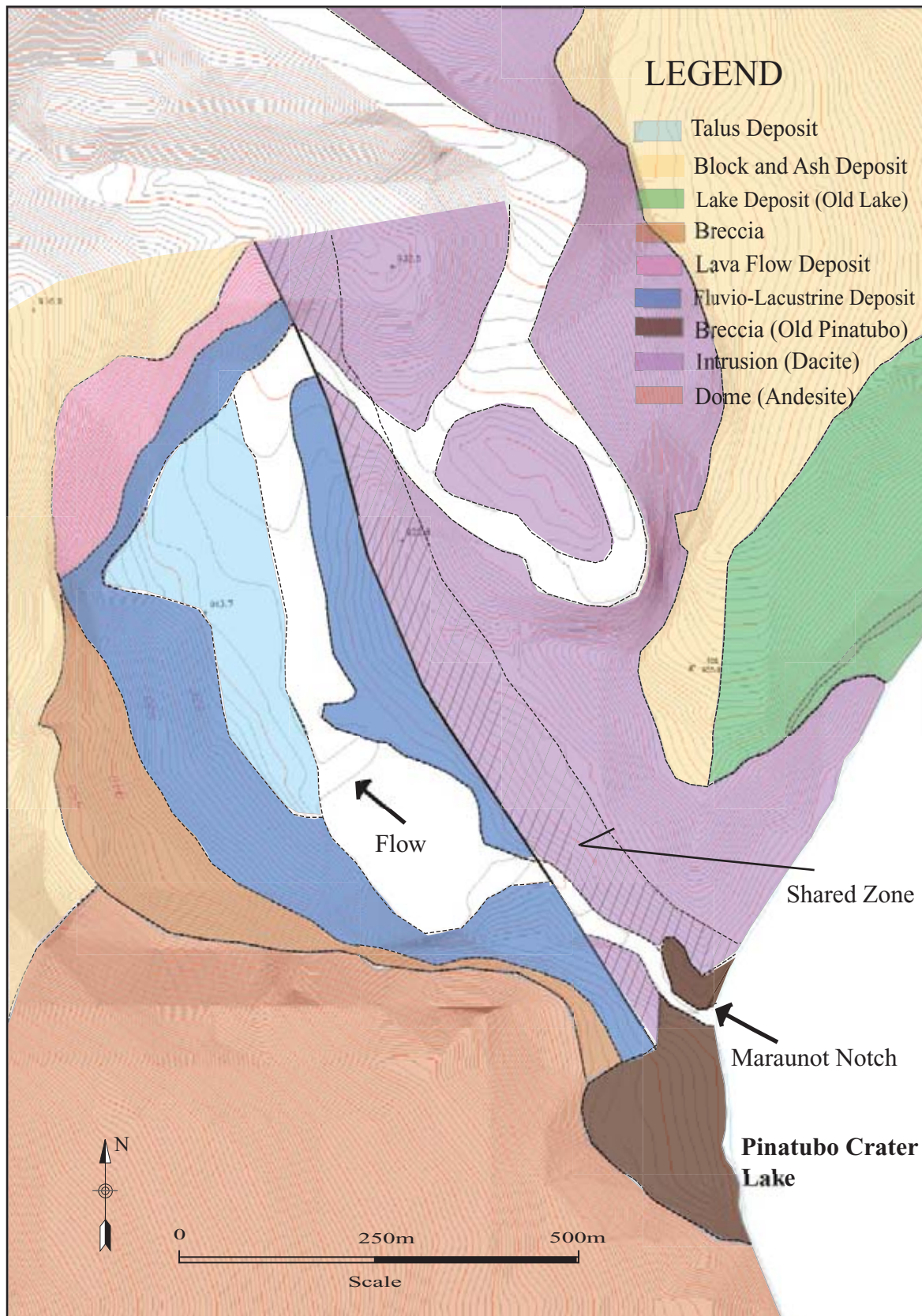


Figure 2.3.13

**Subsoil Conditions in the Sto. Tomas River
Dike (Sta. 17 km)**



THE GOVERNMENT OF THE PHILIPPINES
THE DEPARTMENT OF PUBLIC WORKS AND HIGHWAYS

**The Study on Sabo and Flood Control for
Western River Basins of Mount Pinatubo
in the Republic of the Philippines**

JAPAN INTERNATIONAL COOPERATION AGENCY

Figure 2.4.1

Geological Map at the Maraunot Notch