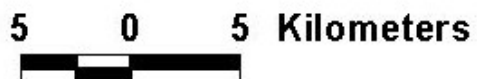
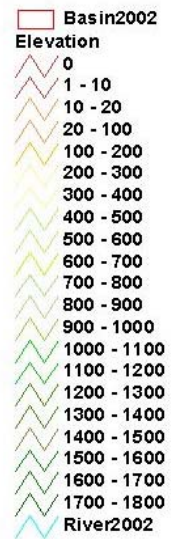
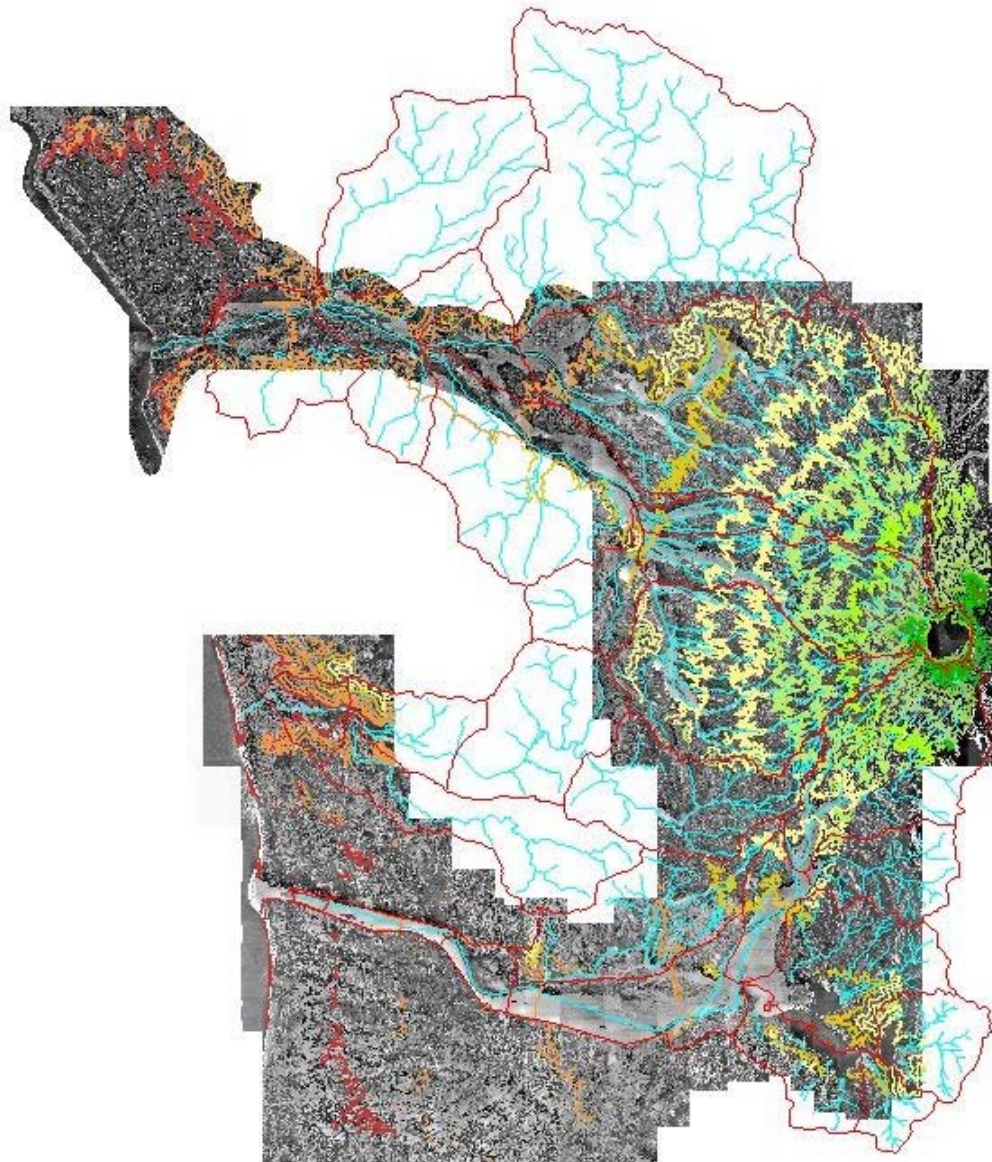
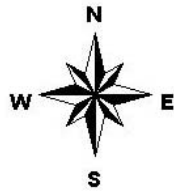


*The Study on Sabo and Flood Control for Western River Basins of Mount Pinatubo  
in the Republic of the Philippines  
Final Report  
Supporting Report*

## **Figures**



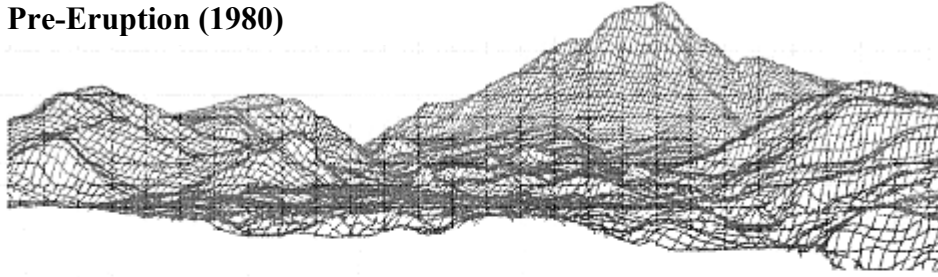
THE GOVERNMENT OF THE PHILIPPINES  
THE DEPARTMENT OF PUBLIC WORKS AND HIGHWAYS

**The Study on Sabo and Flood Control for  
Western River Basins of Mount Pinatubo in the  
Republic of the Philippines**

*JAPAN INTERNATIONAL COOPERATION AGENCY*

**Figure 1.1.1**  
**Topographic Map in the Study Area**

**Pre-Eruption (1980)**

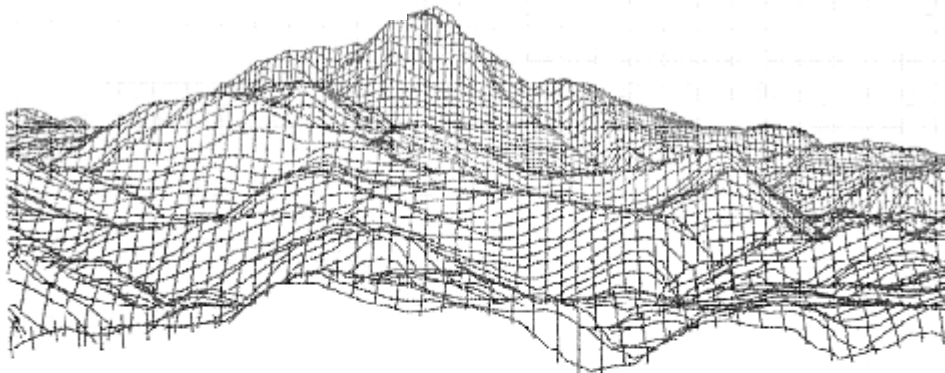


**Post Eruption (1994)**

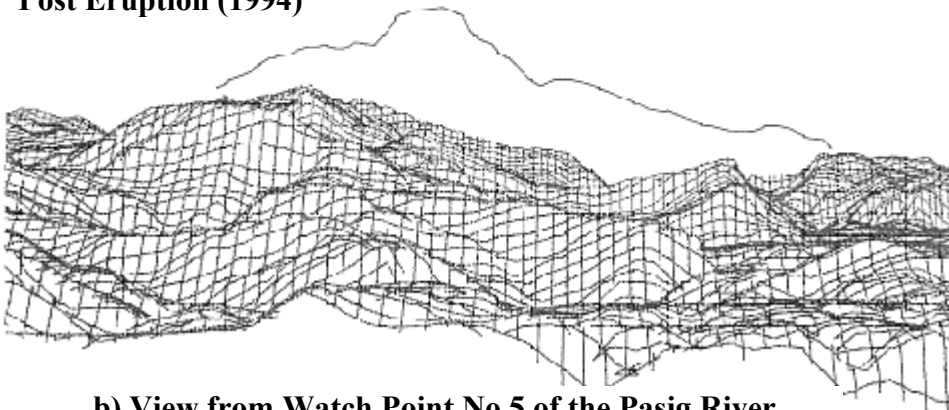


**a) View from Clark Field**

**Pre-Eruption (1980)**



**Post Eruption (1994)**



**b) View from Watch Point No.5 of the Pasig River**

THE GOVERNMENT OF THE PHILIPPINES  
THE DEPARTMENT OF PUBLIC WORKS AND HIGHWAYS

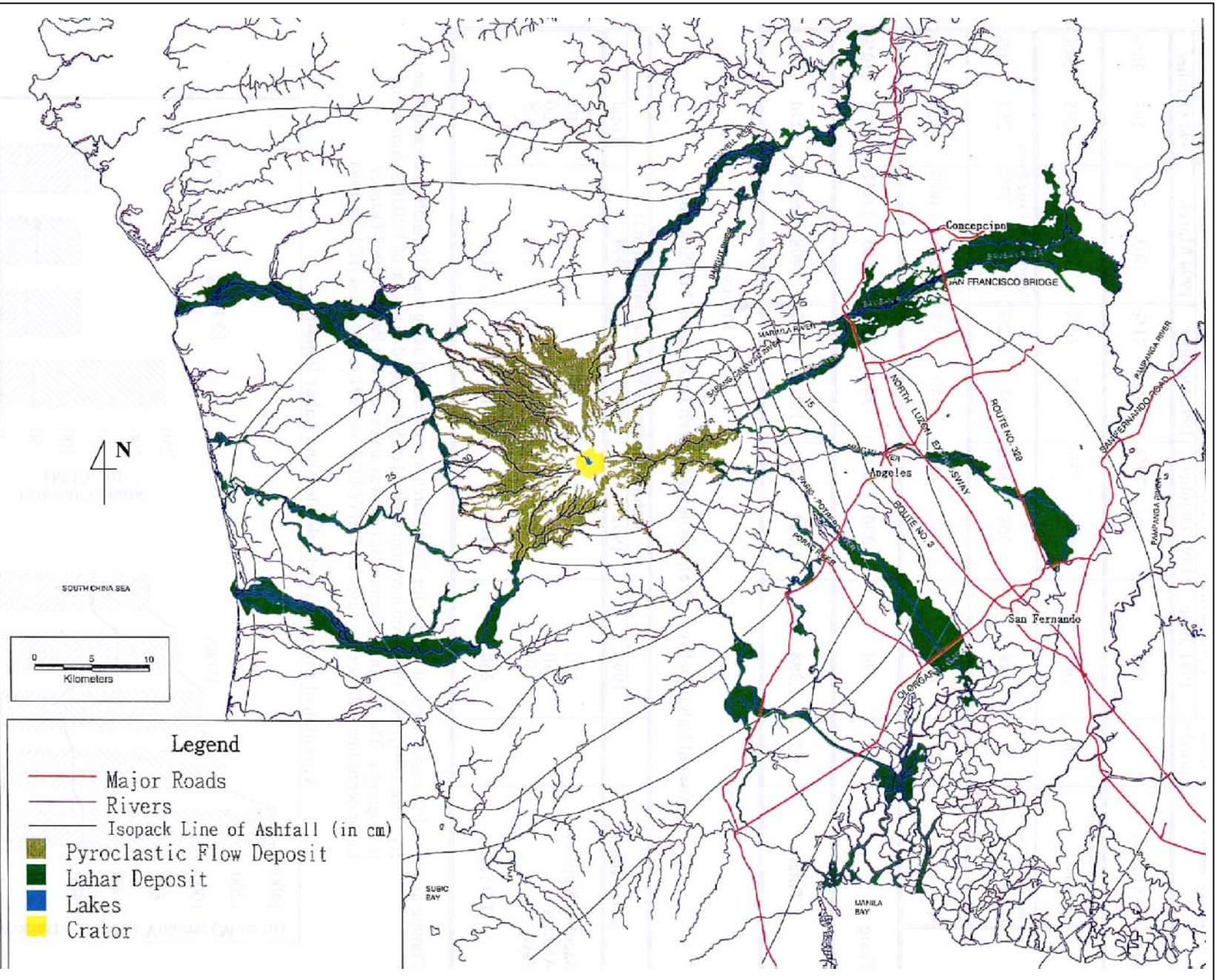
**The Study on Sabo and Flood Control for  
Western River Basins of Mount Pinatubo in the  
Republic of the Philippines**

*JAPAN INTERNATIONAL COOPERATION AGENCY*

**Figure 1.1.2**

**View of Mount Pinatubo before and after  
Eruption**





Source: The Study on Flood and Mudflow Control for Sacobia-Bamban/Abacan River Draining from Mt. Pinatubo, 1996

THE GOVERNMENT OF THE PHILIPPINES  
THE DEPARTMENT OF PUBLIC WORKS AND HIGHWAYS

**The Study on Sabo and Flood Control for  
Western River Basins of Mount Pinatubo in the  
Republic of the Philippines**

JAPAN INTERNATIONAL COOPERATION AGENCY

**Figure 1.1.3**

**Pinatubo Volcano Disaster Map**



**1991 before eruption**



**1991 after eruption**

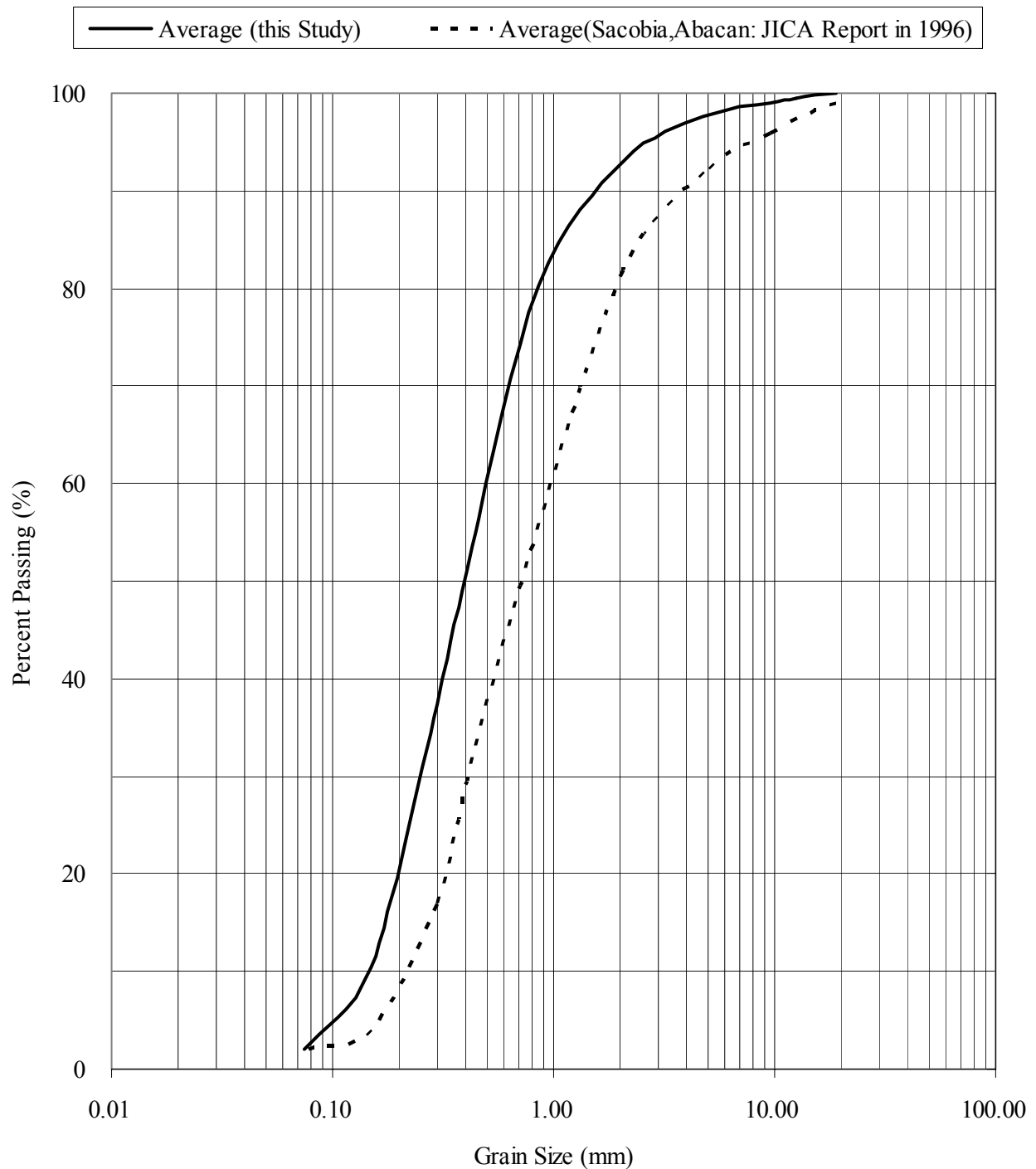


**September 1994**



**May 2002**





THE GOVERNMENT OF THE PHILIPPINES  
THE DEPARTMENT OF PUBLIC WORKS AND HIGHWAYS

**The Study on Sabo and Flood Control for  
Western River Basins of Mount Pinatubo in  
the Republic of the Philippines**

*JAPAN INTERNATIONAL COOPERATION AGENCY*

**Figure 1.1.5**

**Grain Size Distribution of Riverbed Materials  
in Eastern and Western Pinatubo Area**