

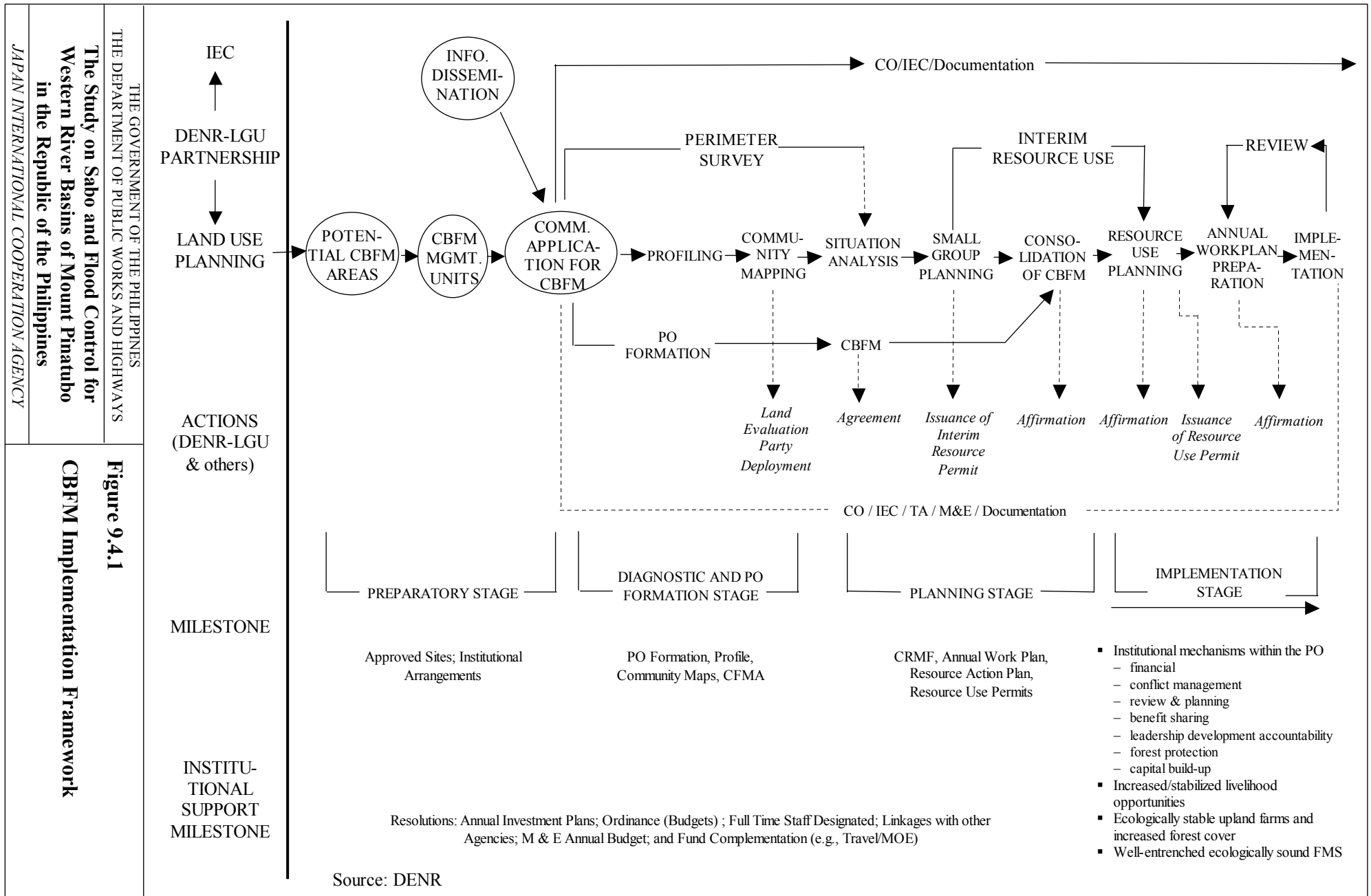
THE GOVERNMENT OF THE PHILIPPINES
THE DEPARTMENT OF PUBLIC WORKS AND HIGHWAYS

**The Study on Sabo and Flood Control for
Western River Basins of Mount Pinatubo
in the Republic of the Philippines**

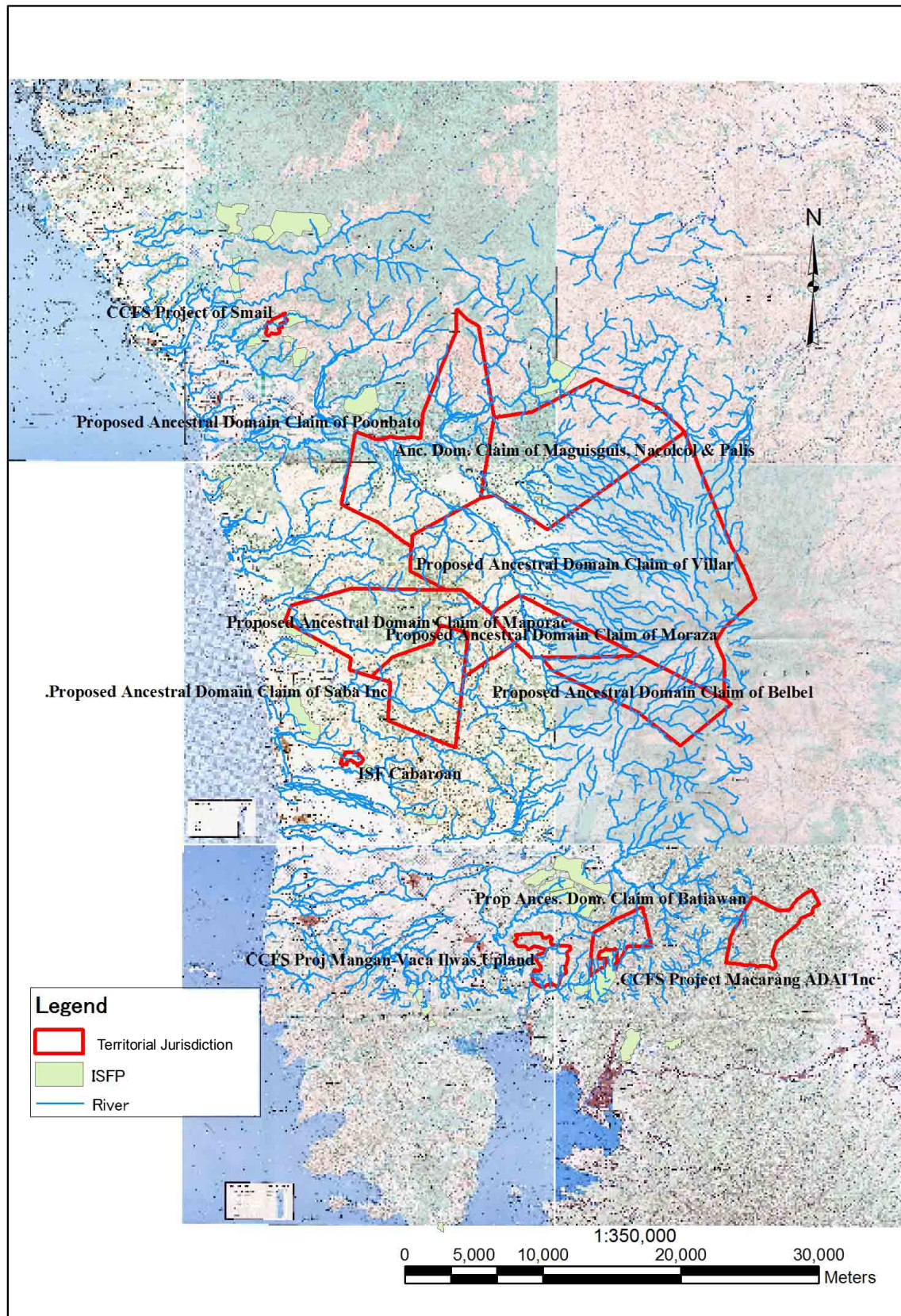
JAPAN INTERNATIONAL COOPERATION AGENCY

Figure 9.3.9

**Hazard Map
(Sto. Tomas River Basin : Left Side III)**



Source: DENR



THE GOVERNMENT OF THE PHILIPPINES
THE DEPARTMENT OF PUBLIC WORKS AND HIGHWAYS

**The Study on Sabo and Flood Control for
Western River Basins of Mount Pinatubo in
the Republic of the Philippines**

JAPAN INTERNATIONAL COOPERATION AGENCY

Figure 9.4.2

**Territorial Jurisdiction of Proposed Ancestral
Domain Claim**

As of 07 May 2002



As of 29 August 2002



As of 17 September 2002



THE GOVERNMENT OF THE PHILIPPINES
THE DEPARTMENT OF PUBLIC WORKS AND HIGHWAYS
**The Study on Sabo and Flood Control for
Western River Basins of Mount Pinatubo in the
Republic of the Philippines**
JAPAN INTERNATIONAL COOPERATION AGENCY

Figure 9.4.3

**Progress of Collapse at Spillway Portion of Dizon
Mines Tailing Dam**

Before Lake Formation
July 1991



After Lake Formation
Nov 1991



Source: "Fire and Mud"

THE GOVERNMENT OF THE PHILIPPINES
THE DEPARTMENT OF PUBLIC WORKS AND HIGHWAYS

**The Study on Sabo and Flood Control for
Western River Basins of Mount Pinatubo in the
Republic of the Philippines**

JAPAN INTERNATIONAL COOPERATION AGENCY

Figure 9.4.4

**Formation of Mapanuepe Lake before and after
the Eruption**