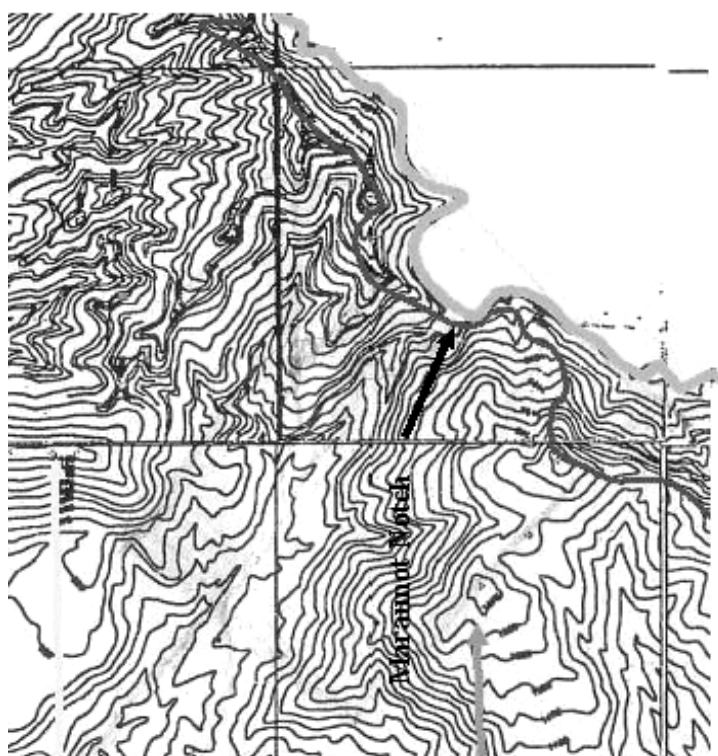
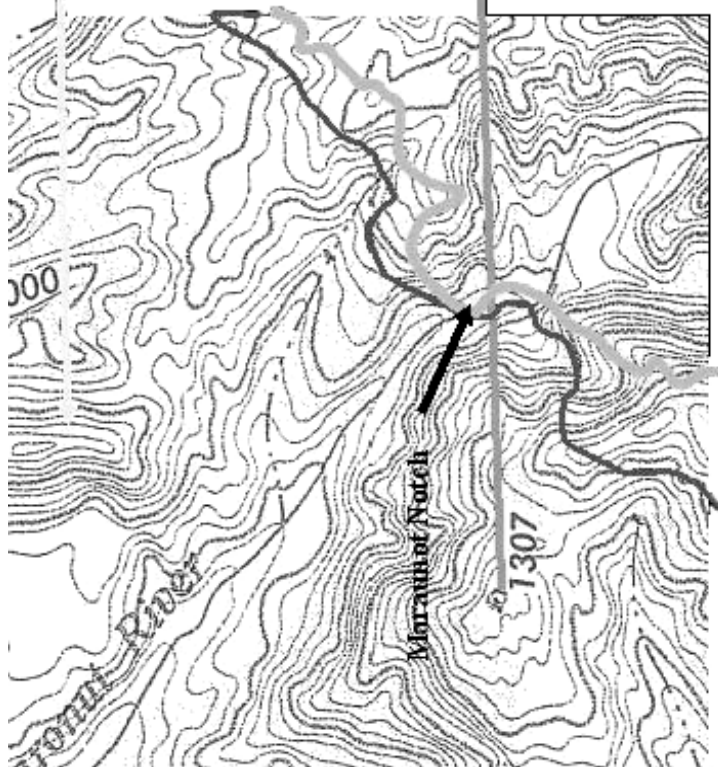


Figure Geologic Plan of Maratunot Notch



After Eruption  
(Topographic map prepared for  
this study based on aerial photos  
taken in May and June 2002.)



Before Eruption  
(1/50,000 topographic map,  
NAMRIA, 1977)

THE GOVERNMENT OF THE PHILIPPINES  
THE DEPARTMENT OF PUBLIC WORKS AND HIGHWAYS

**The Study on Sabo and Flood Control for  
Western River Basins of Mount Pinatubo in the  
Republic of the Philippines**

*JAPAN INTERNATIONAL COOPERATION AGENCY*

**Figure 8.8.2**

**Comparison of Topography of Maraunot  
Notch before and after Eruption**



Before Breach

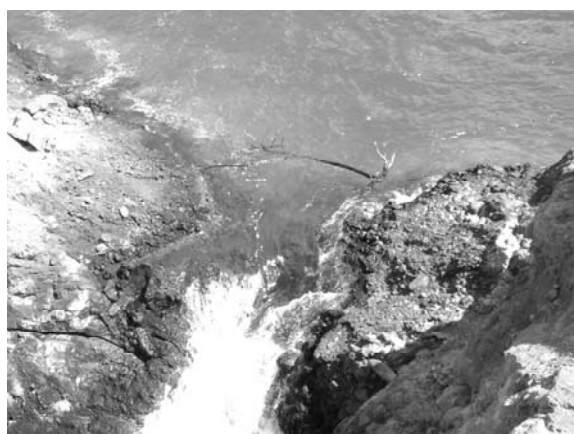


After Breach

Aerial Photograph of Maraunot Notch



30 July 2002



28 February 2003

Current Condition of Maraunot Notch

THE GOVERNMENT OF THE PHILIPPINES  
THE DEPARTMENT OF PUBLIC WORKS AND HIGHWAYS

**The Study on Sabo and Flood Control for  
Western River Basins of Mount Pinatubo in the  
Republic of the Philippines**

*JAPAN INTERNATIONAL COOPERATION AGENCY*

**Figure 8.8.3**

**Aerial Photograph of Maraunot Notch**