

THE GOVERNMENT OF THE PHILIPPINES  
THE DEPARTMENT OF PUBLIC WORKS AND HIGHWAYS

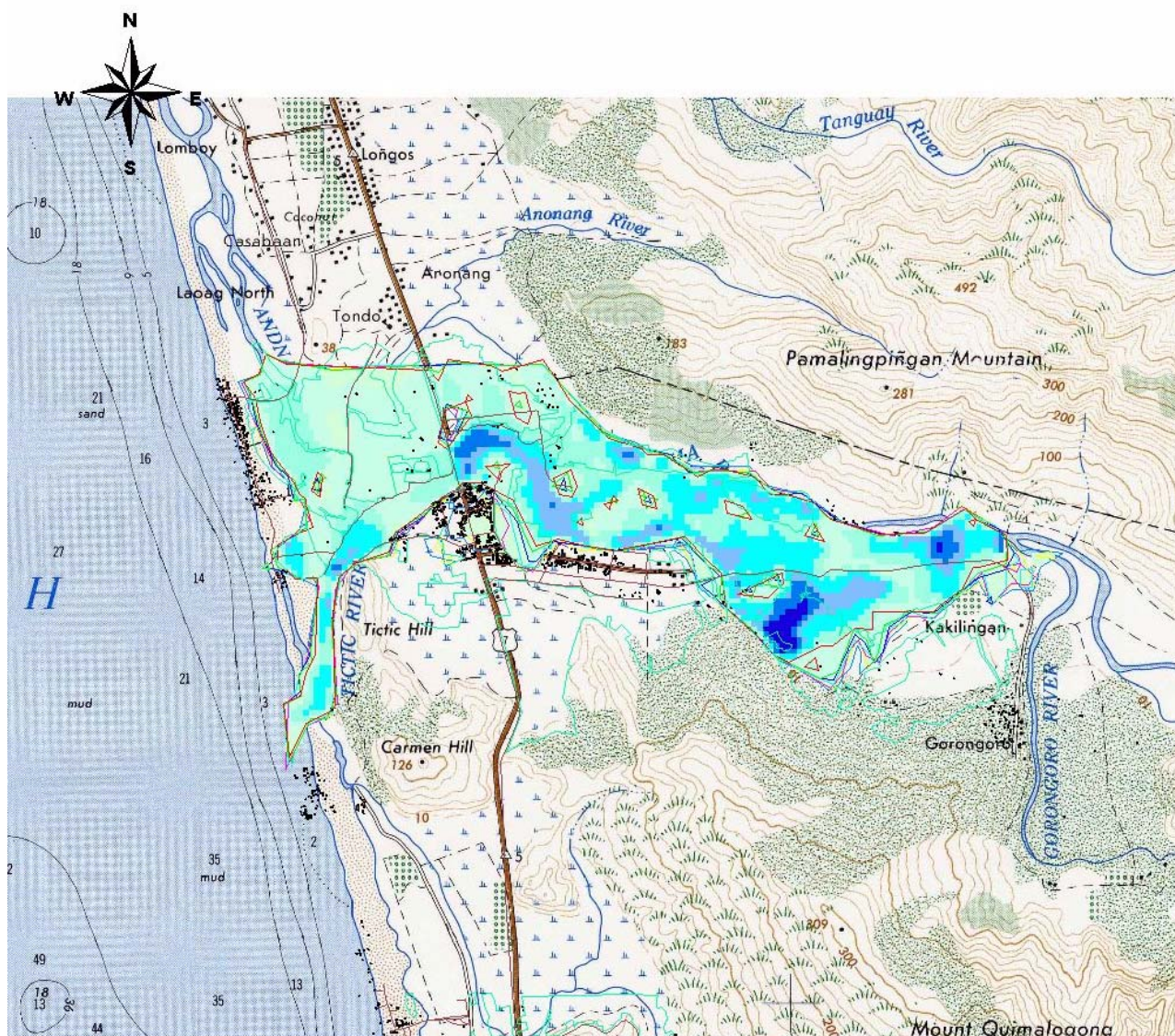
**The Study on Sabo and Flood Control for  
Western River Basins of Mount Pinatubo in  
the Republic of the Philippines**

JAPAN INTERNATIONAL COOPERATION AGENCY

**Figure 7.2.1**

**Mudflow Hazard Area in the Bucao River  
Basin under 100-year Probable Flood**





- △ Road2002
- Paddy\_field
- House
- Maloma2y result
- Maloma5y result
- Maloma10y result
- Maloma20y result
- Maloma30y result
- Maloma50y result
- Maloma100y result
- Maloma100yresult (depth,m)
- 0.1 - 0.5m
- 0.5 - 1m
- 1 - 1.5m
- 1.5 - 2m
- 2 - 2.5m
- 2.5 - 3m
- 3 - 5m
- 5 - 10m
- No Data

1 0 1 Kilometers

THE GOVERNMENT OF THE PHILIPPINES  
THE DEPARTMENT OF PUBLIC WORKS AND HIGHWAYS

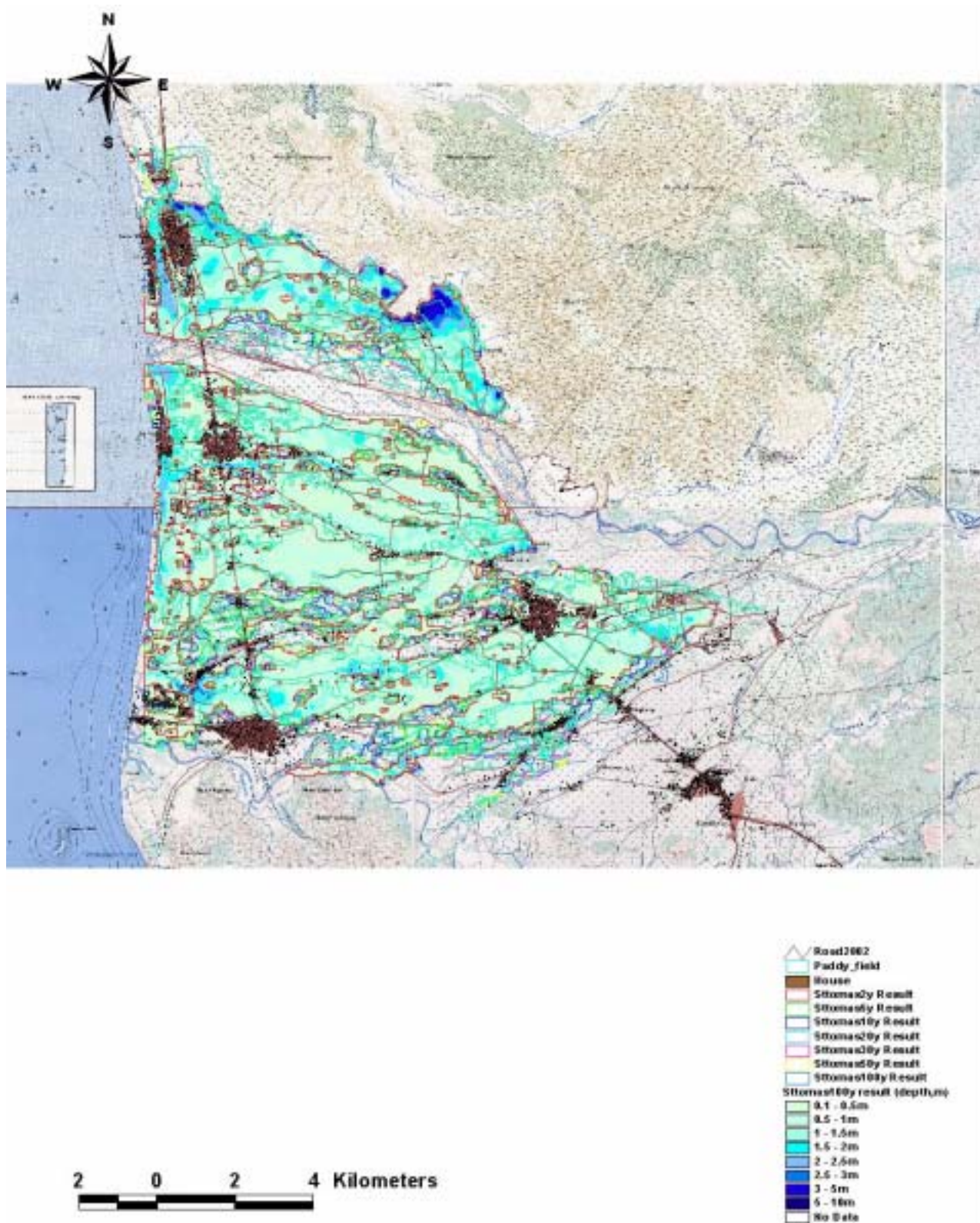
**The Study on Sabo and Flood Control for  
Western River Basins of Mount Pinatubo in  
the Republic of the Philippines**

JAPAN INTERNATIONAL COOPERATION AGENCY

**Figure 7.2.2**

**Mudflow Hazard Area in the Maloma River  
Basin under 100-year Probable Flood**





THE GOVERNMENT OF THE PHILIPPINES  
THE DEPARTMENT OF PUBLIC WORKS AND HIGHWAYS

**The Study on Sabo and Flood Control for  
Western River Basins of Mount Pinatubo in  
the Republic of the Philippines**

JAPAN INTERNATIONAL COOPERATION AGENCY

**Figure 7.2.3**

**Mudflow Hazard Area in the Sto. Tomas  
River Basin under 100-year Probable Flood**