

----- Before July 2002    ——— After July 2002

THE GOVERNMENT OF THE PHILIPPINES  
THE DEPARTMENT OF PUBLIC WORKS AND HIGHWAYS

**The Study on Sabo and Flood Control for  
Western River Basins of Mount Pinatubo in  
the Republic of the Philippines**

JAPAN INTERNATIONAL COOPERATION AGENCY

**Figure 6.2.4**

**Comparison of River Cross Sections before  
and after the Flood in July 2002 in the Sto.  
Tomas River**

Photo 2. Checkpoint No.2 (before Flood)



Photo 3. Checkpoint No.2 (after Flood)

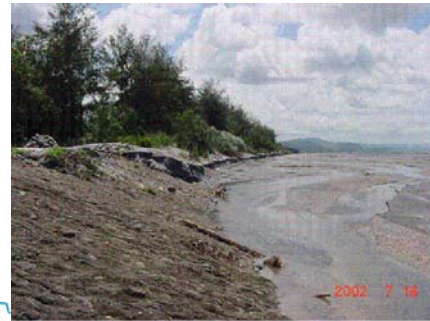


Photo 4. Checkpoint No.3 (before Flood)



Photo 5. Checkpoint No.3 (after Flood)



The existing culvert structure was completely buried due to sediment deposition caused by the lahar in July 2002 (sediment depth: 2 m)

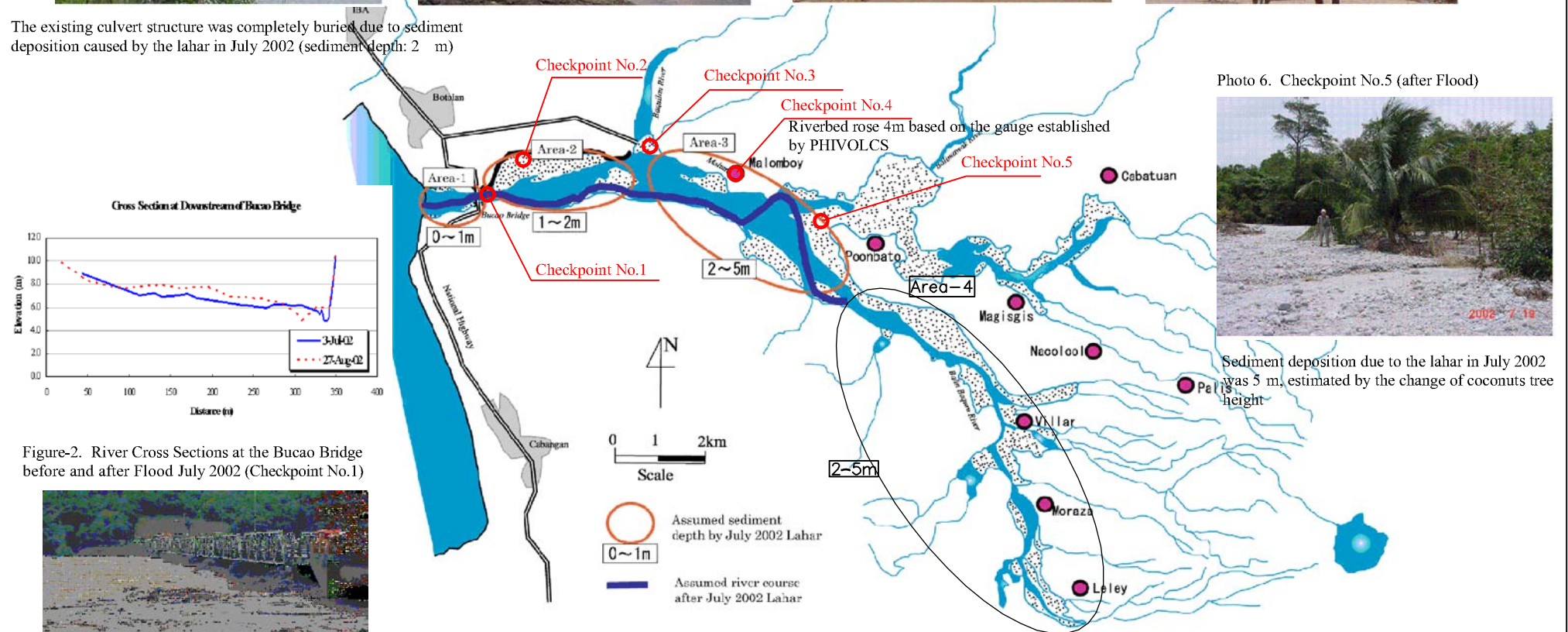


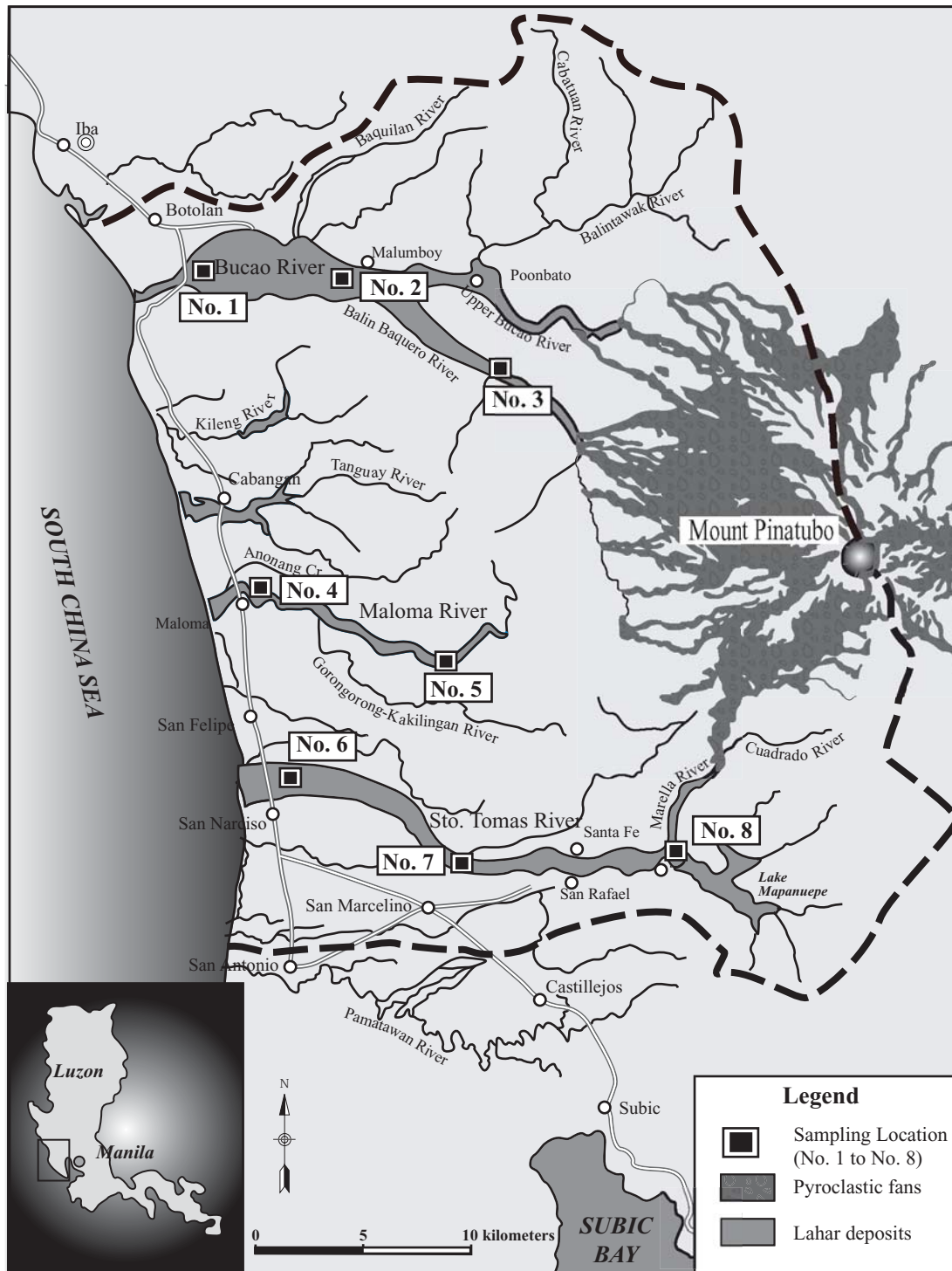
Figure 1 Assumed Sediment Depth and River Course due to Flood/Lahar of July 2002

Figure-2. River Cross Sections at the Bucao Bridge before and after Flood July 2002 (Checkpoint No.1)



Photo 1. Bucao Bridge during the Lahar on 10 July 2002 (Checkpoint No.1)

<p>THE GOVERNMENT OF THE PHILIPPINES THE DEPARTMENT OF PUBLIC WORKS AND HIGHWAYS</p> <p><b>The Study on Sabo and Flood Control for Western River Basins of Mount Pinatubo in the Republic of the Philippines</b></p> <p>JAPAN INTERNATIONAL COOPERATION AGENCY</p>	<p><b>Figure 6.2.5</b></p> <p><b>Investigation Results of Sediment Delivery in 2002 in the Bucao River</b></p>
--	--



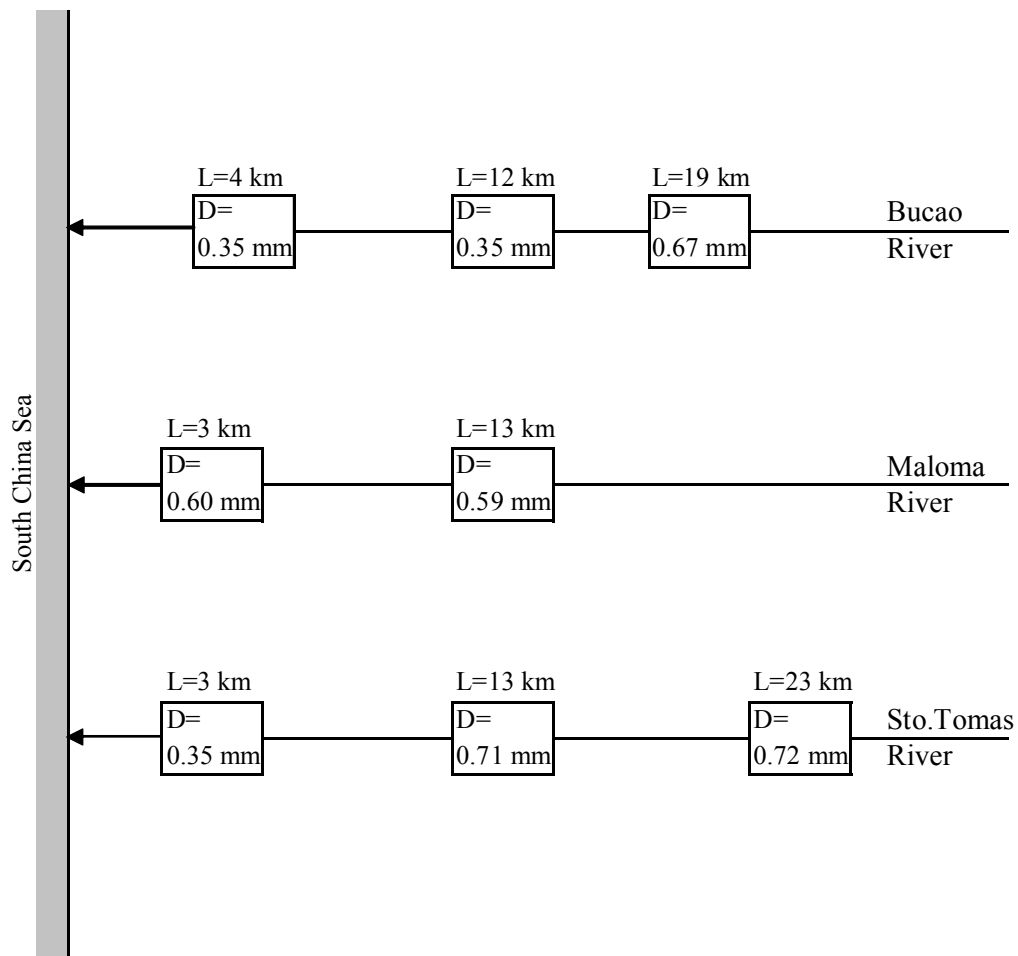
THE GOVERNMENT OF THE PHILIPPINES  
THE DEPARTMENT OF PUBLIC WORKS AND HIGHWAYS

**The Study on Sabo and Flood Control for  
Western River Basins of Mount Pinatubo  
in the Republic of the Philippines**

JAPAN INTERNATIONAL COOPERATION AGENCY

**Figure 6.3.1**

**Location Map for Riverbed Material Sampling**



Note : L= Distance from River-mouth  
D = Mean Grain Size

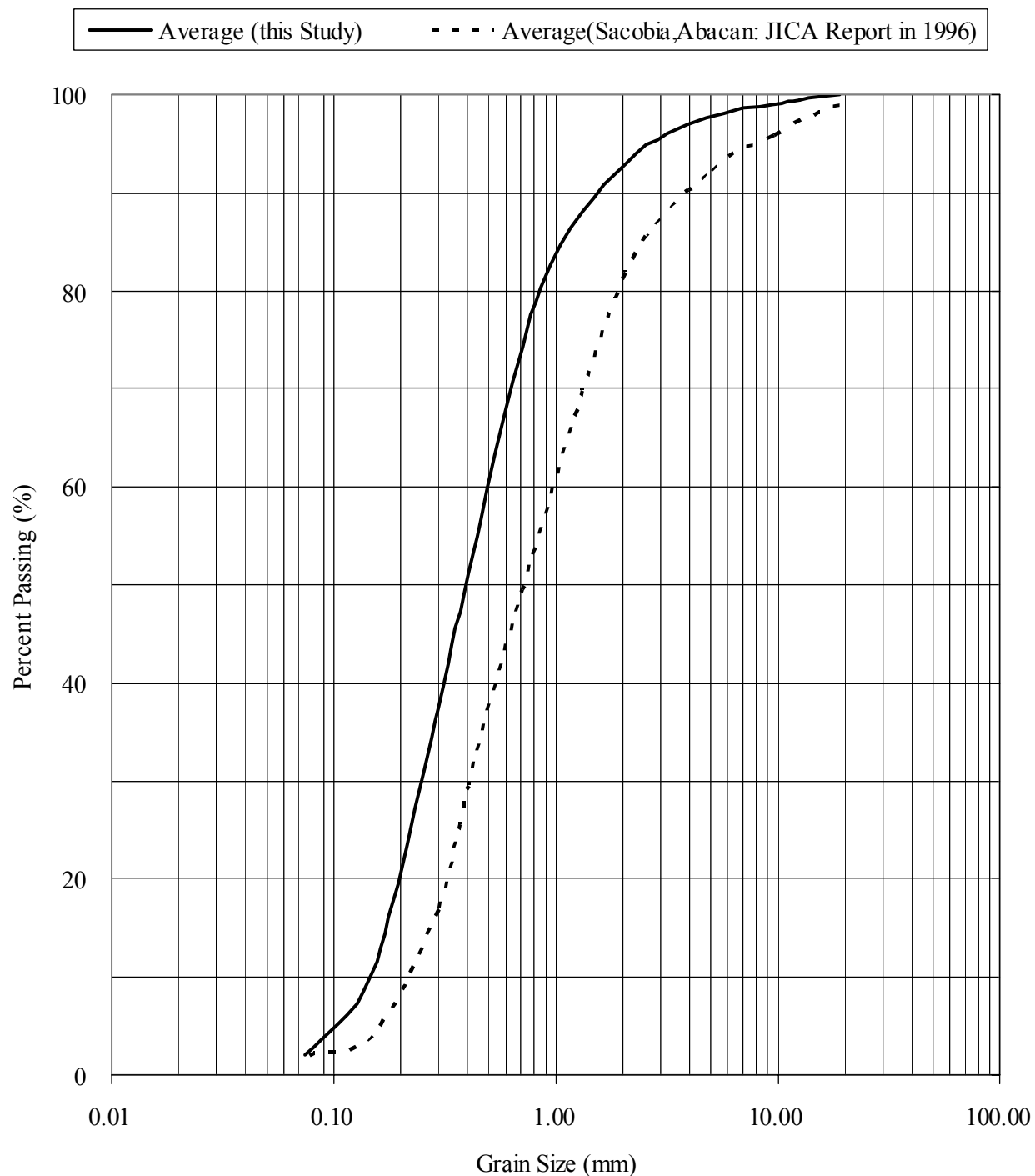
THE GOVERNMENT OF THE PHILIPPINES  
THE DEPARTMENT OF PUBLIC WORKS AND HIGHWAYS

**The Study on Sabo and Flood Control for  
Western River Basins of Mount Pinatubo in  
the Republic of the Philippines**

JAPAN INTERNATIONAL COOPERATION AGENCY

**Figure 6.3.2**

**Grain Size of Riverbed Materials in the Study  
Area**



THE GOVERNMENT OF THE PHILIPPINES  
THE DEPARTMENT OF PUBLIC WORKS AND HIGHWAYS

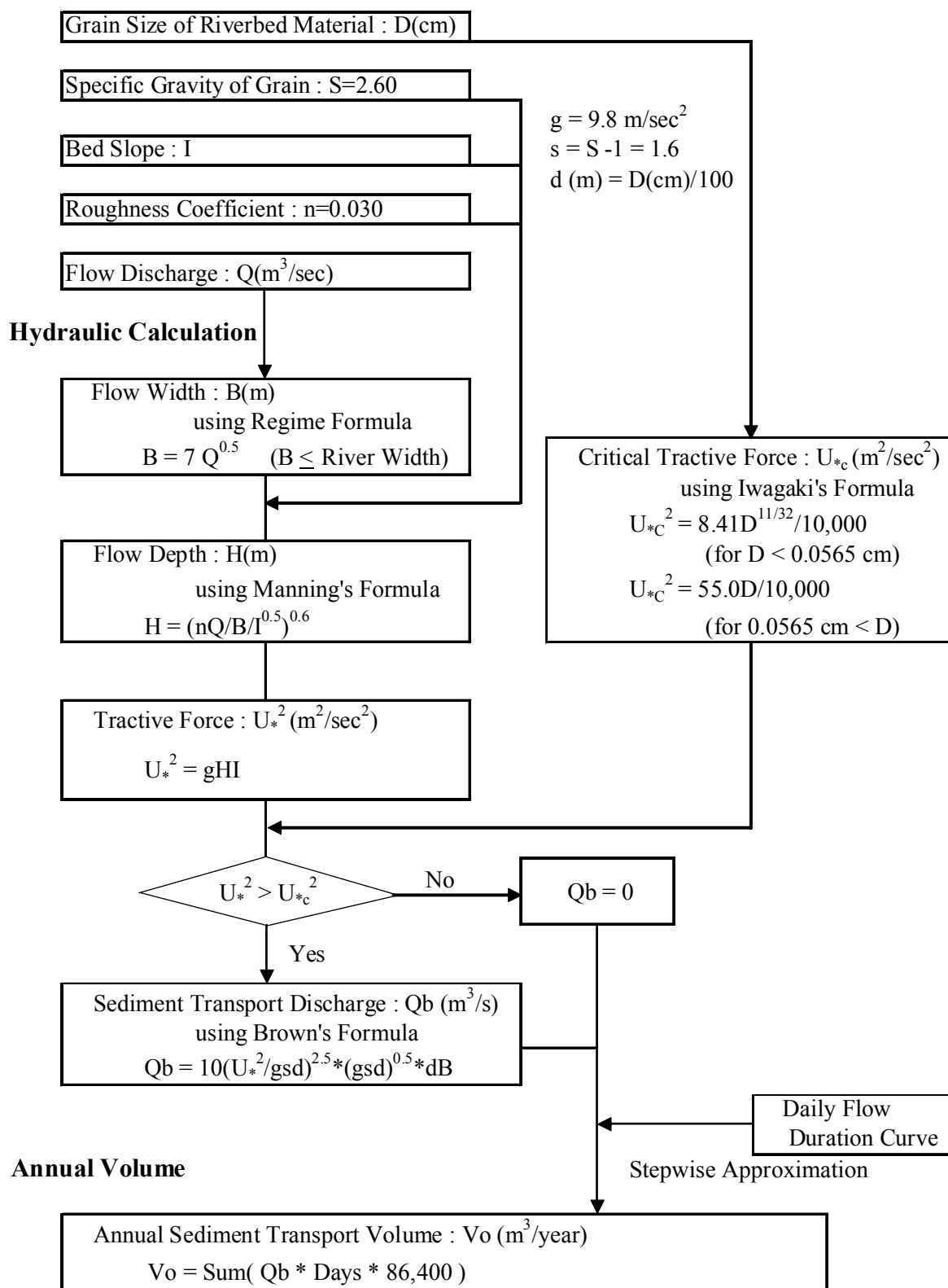
**The Study on Sabo and Flood Control for  
Western River Basins of Mount Pinatubo in  
the Republic of the Philippines**

JAPAN INTERNATIONAL COOPERATION AGENCY

**Figure 6.3.3**

**Comparison of Grain Size Distribution of  
Riverbed Materials**

## Data Input



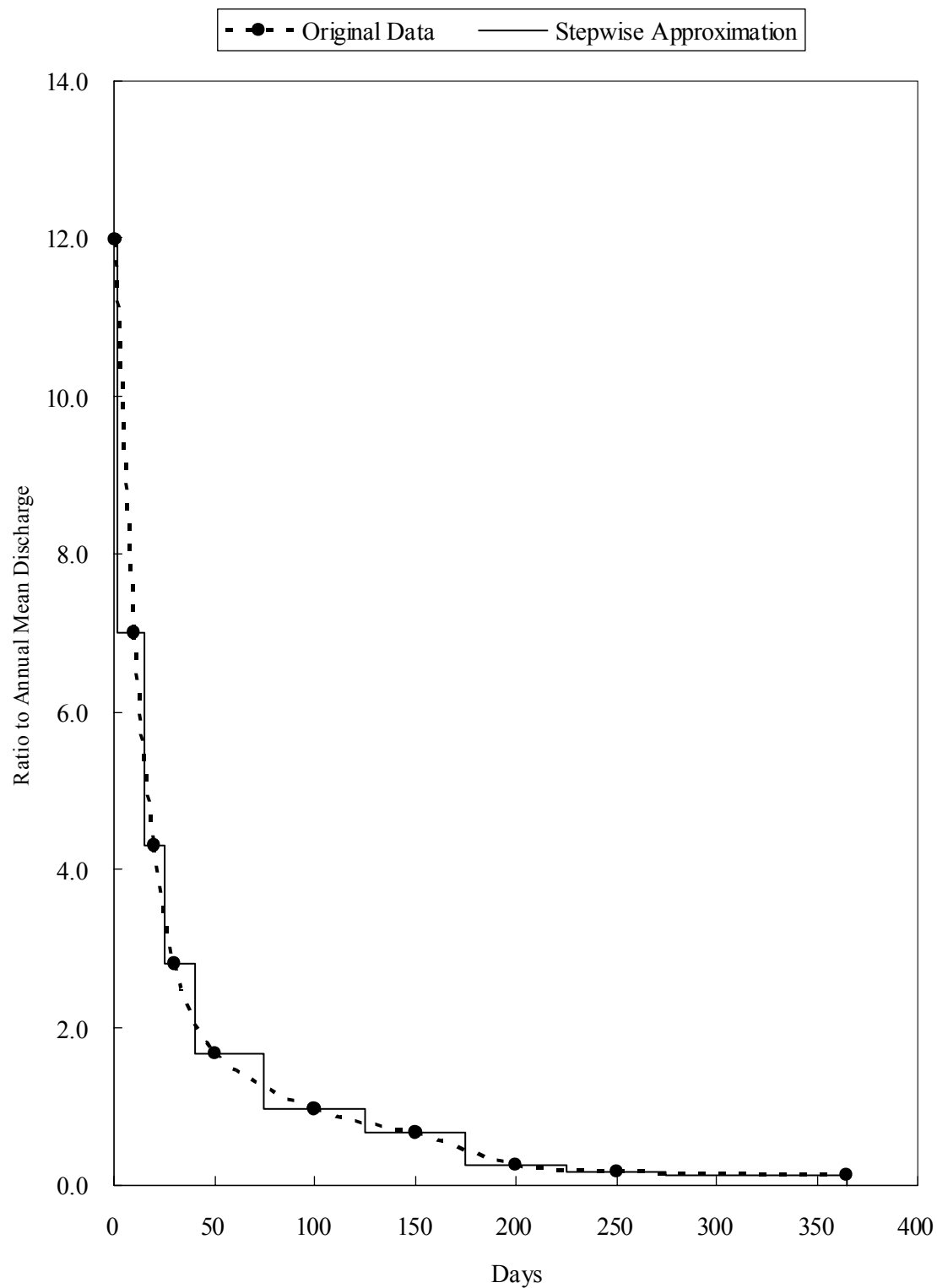
THE GOVERNMENT OF THE PHILIPPINES  
THE DEPARTMENT OF PUBLIC WORKS AND HIGHWAYS

**The Study on Sabo and Flood Control for  
Western River Basins of Mount Pinatubo in  
the Republic of the Philippines**

JAPAN INTERNATIONAL COOPERATION AGENCY

**Figure 6.3.4**

**Flow Chart of Calculation of Annual Sediment  
Transport**



THE GOVERNMENT OF THE PHILIPPINES  
THE DEPARTMENT OF PUBLIC WORKS AND HIGHWAYS

**The Study on Sabo and Flood Control for  
Western River Basins of Mount Pinatubo in  
the Republic of the Philippines**

*JAPAN INTERNATIONAL COOPERATION AGENCY*

**Figure 6.3.5**

**Stepwise Approximation of Duration Curve**



